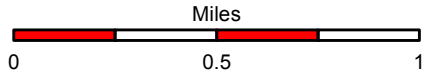


Slim Fire
Black Mesa Ranger District
Apache-Sitgreaves N.F.s

Date: 06/10/2017
 Size: 3,241 acres



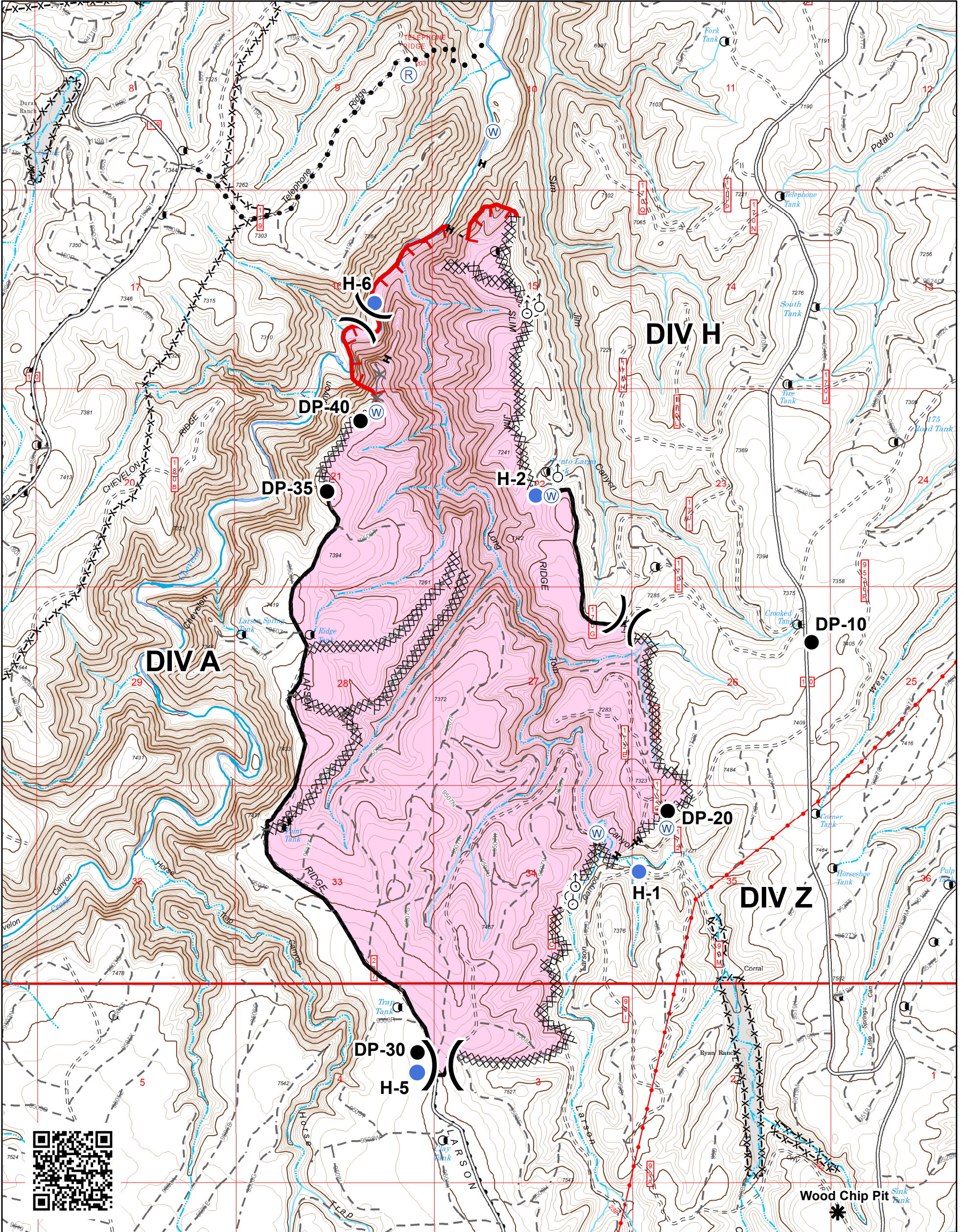
- Drop Point
-) Division Break
- Helispot
- (W) Water Source
- (R) Repeater
- Spot Fire
- * Wood Chip Pit

- ┌─┐ Uncontrolled Fireline
- Completed Line
- ××××× Completed Dozer Line
- H - H - Completed Hand Line
- Planned Secondary Line
- x x x-x Fence
- Utility/Transmission Line

Road Operational Level & Status

- Level 5
- Level 4
- Level 3
- == Level 2
- - - Level 1
- ×× Decommissioned

Date: 6/9/2017 By: ebredemann
 C:\Users\ebredemann\Documents\Fire\Incidents\2017_SlimFire\base_data\Slim_IAPMap06_09_17.mxd



Wood Chip Pit