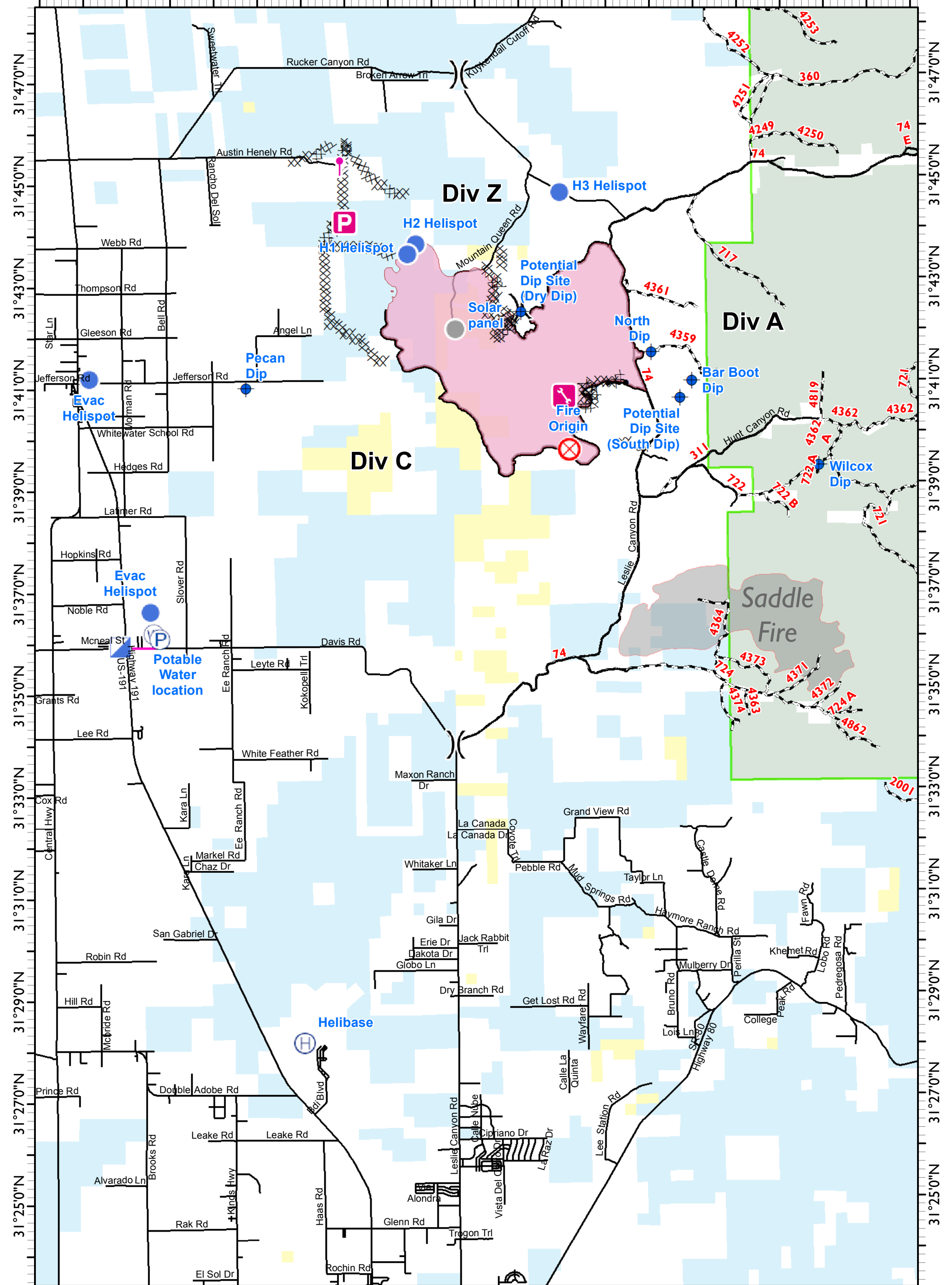


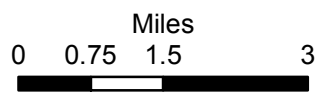
109°42'0"W 109°40'0"W 109°38'0"W 109°36'0"W 109°34'0"W 109°32'0"W 109°30'0"W 109°28'0"W 109°26'0"W 109°24'0"W 109°22'0"W



109°41'0"W 109°39'0"W 109°37'0"W 109°35'0"W 109°33'0"W 109°31'0"W 109°29'0"W 109°27'0"W 109°25'0"W 109°23'0"W

**Swisshelms Incident**  
**AZ-A3S-5188K3AR**

GIS Acres 10950  
7/05/2017 2200



- Dozer Line
- Wildfire Daily Fire Perimeter
- Roads
- Saddle Fire
- BLM
- Forest
- Private
- State Trust
- Fence Cut
- Fence Repair
- Man Hole Cover Removed
- Parking Lot
- Dip Site
- Fire Origin
- Helibase
- Helispot
- Incident Command Post
- Pump
- Water Source
- Other
- Division Break

Day Operational Period 7/5/2017