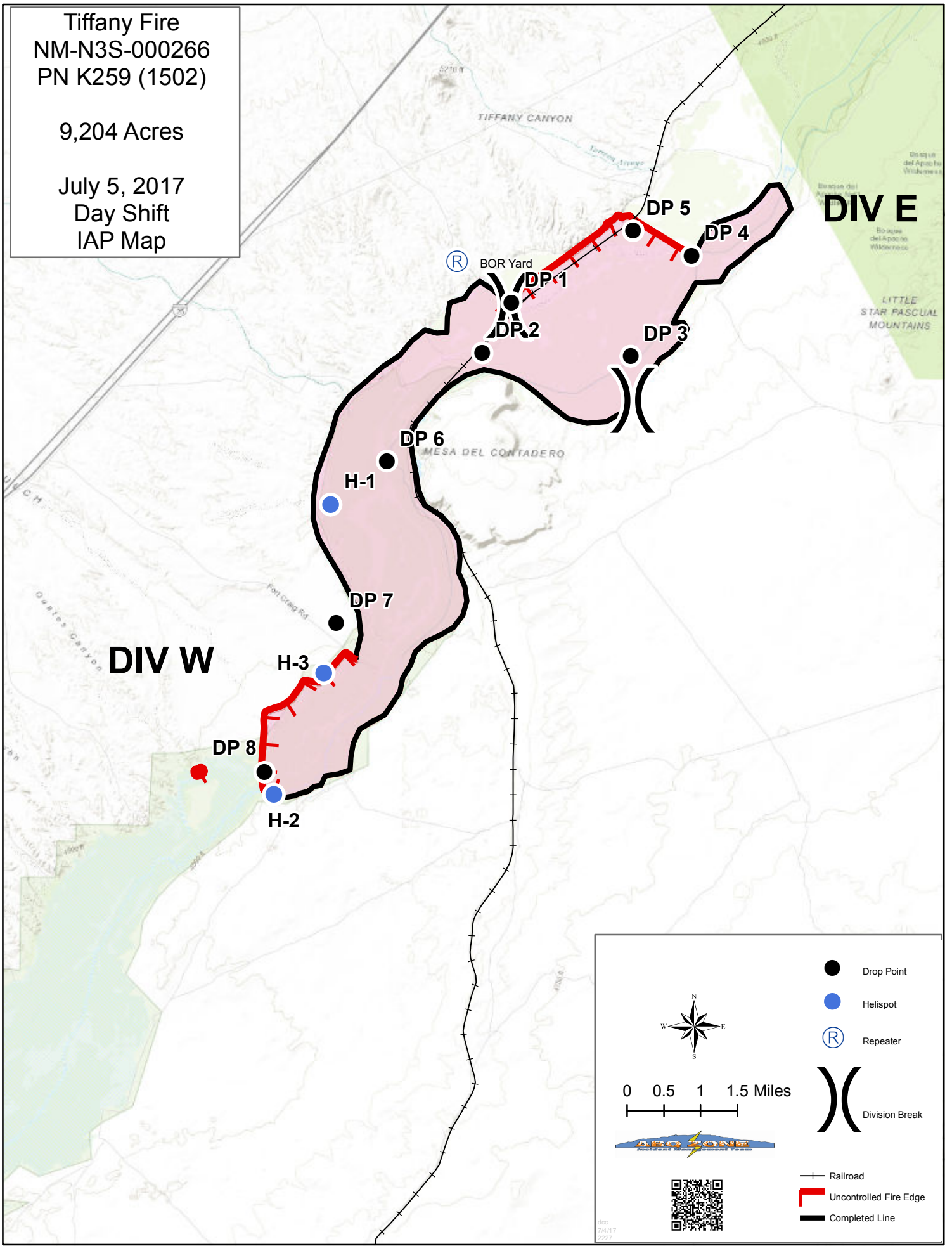


Tiffany Fire
NM-N3S-000266
PN K259 (1502)

9,204 Acres

July 5, 2017
Day Shift
IAP Map



DIV E

DIV W

- Drop Point
- Helispot
- Ⓡ Repeater
- ⌋ Division Break

0 0.5 1 1.5 Miles



- Railroad
- Uncontrolled Fire Edge
- Completed Line

8/5
7/4/17
2227