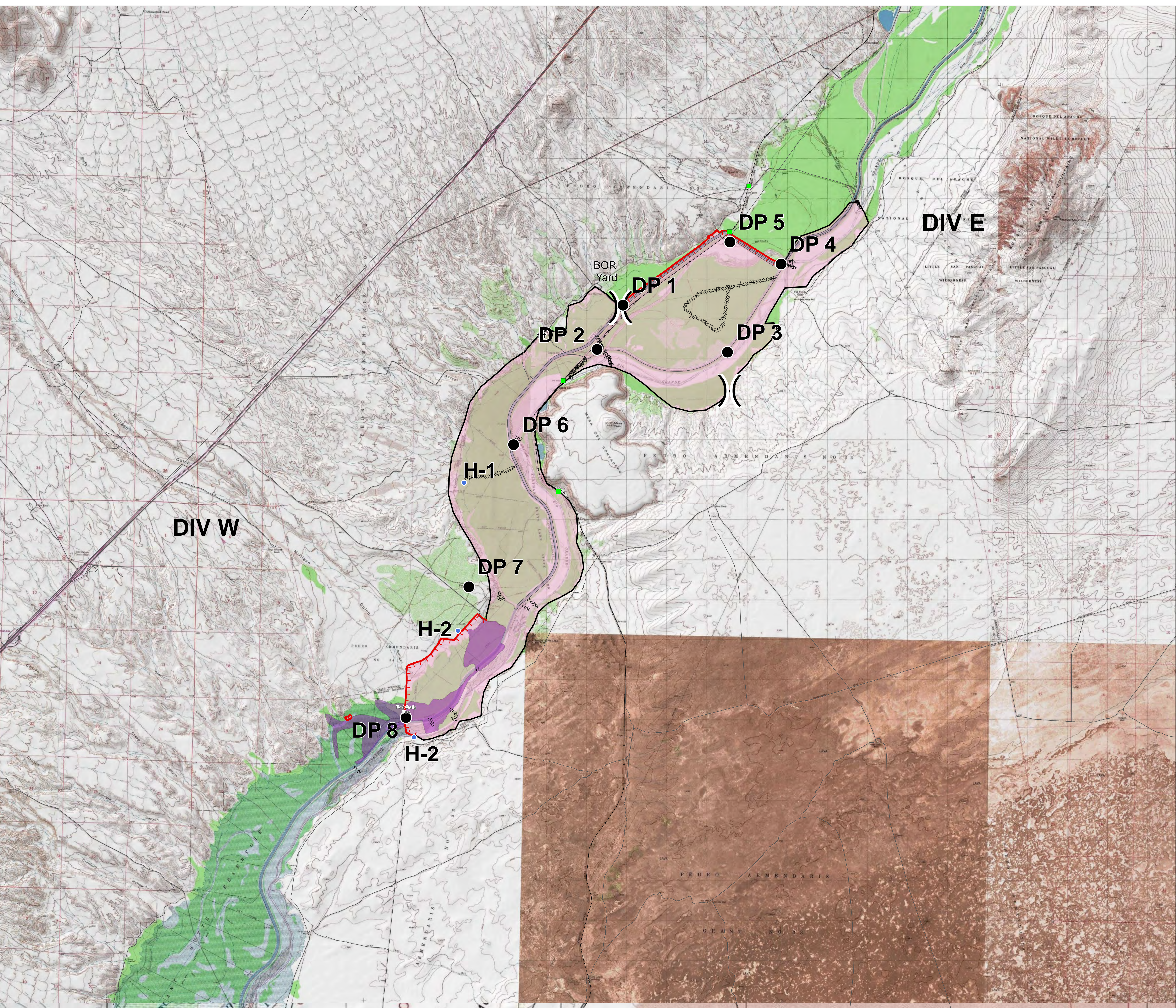


Tiffany Fire  
NM-N3S-000266  
PN K259 (1502)

9,200 Acres

July 6, 2017  
Day Shift  
Ops Map



- RR Bridges
- Drop Point
- Helispot
- ) ( Division Break
- †† Cemetery
- Roads
- Railroad
- Uncontrolled Fire Edge
- Completed Line
- Completed Dozer Line
- Ft. Craig Fire

**DIV W**

**DIV E**

BOR  
Yard

**DP 1**

**DP 5**

**DP 4**

**DP 2**

**DP 3**

**DP 6**

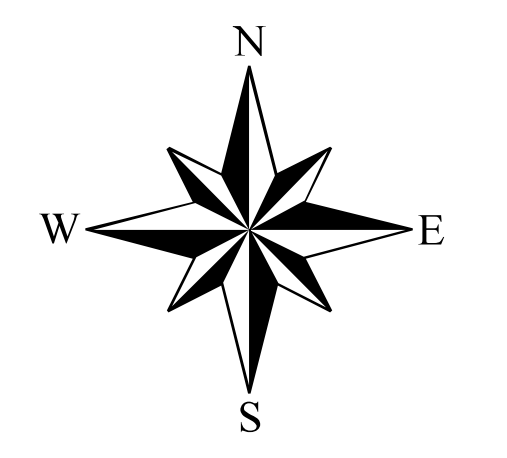
**H-1**

**DP 7**

**H-2**

**DP 8**

**H-2**



0 0.5 1 Miles

