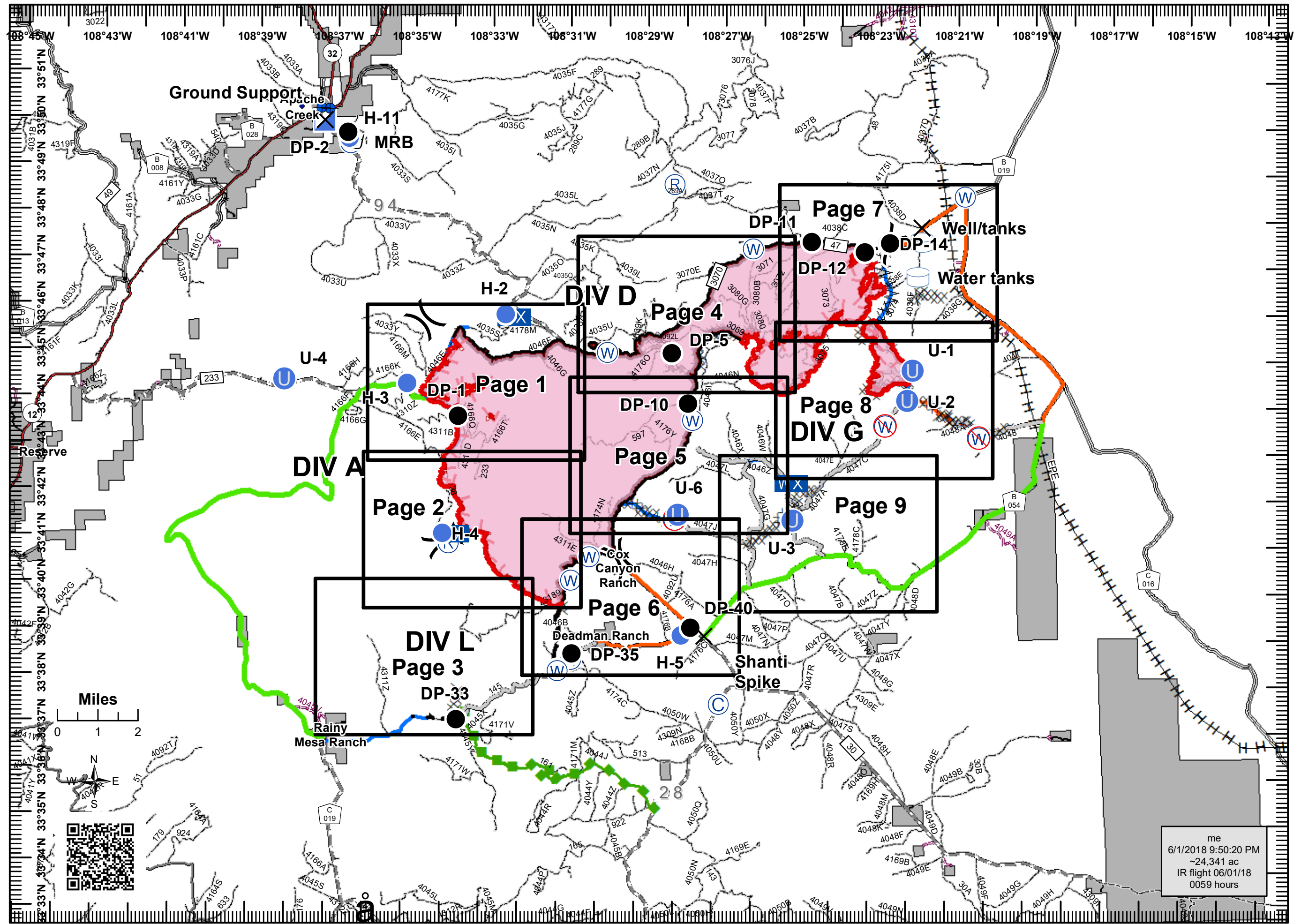


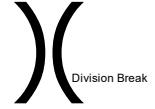
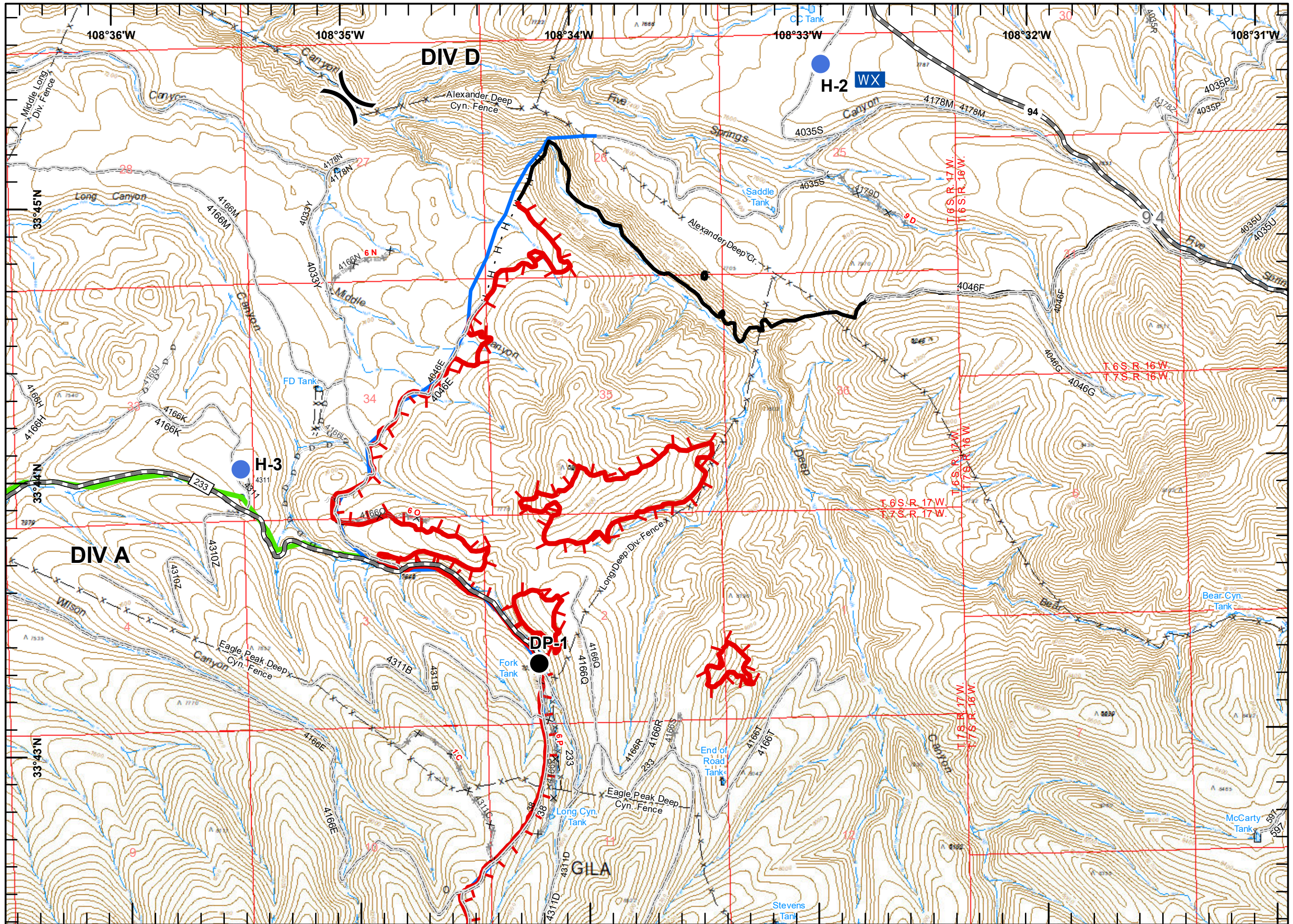
**Buzzard IAP**  
**NM-GNF-190**  
**6/2/18**  
**Day**  
**NAD 83 UTM 12**  
**Index Map**

- Camp
- Closure
- Dip Site
- Drop Point
- Unimproved Landing Area
- Helispot
- Incident Command Post
- Mobile Weather Unit
- Repeater
- Retardant/Mud Pit
- Water Source
- Water Tank
- Restricted Water Source
- Other
- Division Break
- Uncontrolled Fire Edge
- Completed Line
- Completed Dozer Line
- Completed Hand Line
- Road as Completed Line
- Access or Improved Road
- Line Break Completed
- Planned Fire Line
- Escape Route
- Other
- Wildfire Daily Fire Perimeter
- Internal Non-FS Lands
- Primary Line
- Alternate Line
- Contingency Line
- Transmission Line



me  
 6/1/2018 9:50:20 PM  
 ~24,341 ac  
 IR flight 06/01/18  
 0059 hours





Division Break



Drop Point

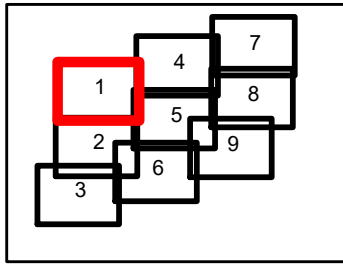


Helispot



Mobile Weather Unit

-  Uncontrolled Fire Edge
-  Completed Line
-  Completed Hand Line
-  Primary Line
-  Contingency Line

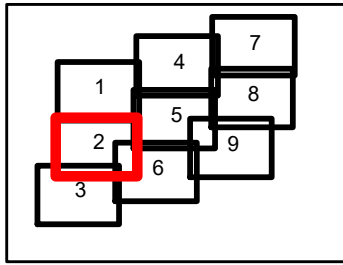
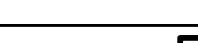
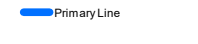
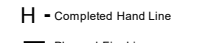
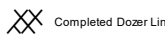
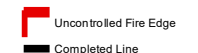
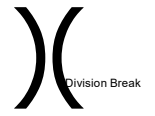
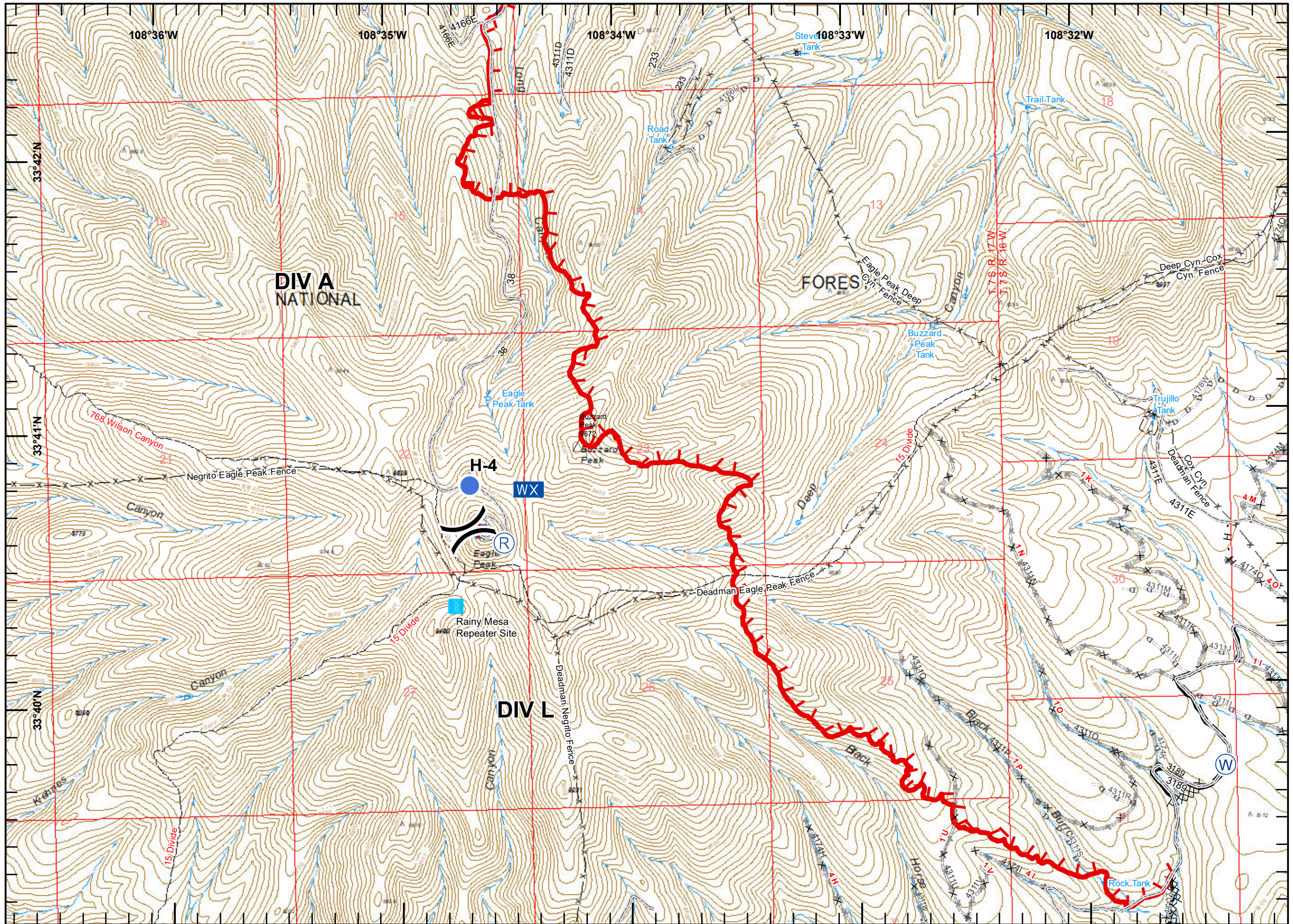


Miles



jro  
 6/1/2018 11:28:37 PM  
 ~24,341 ac  
 IR flight 06/1/18  
 0059 hours



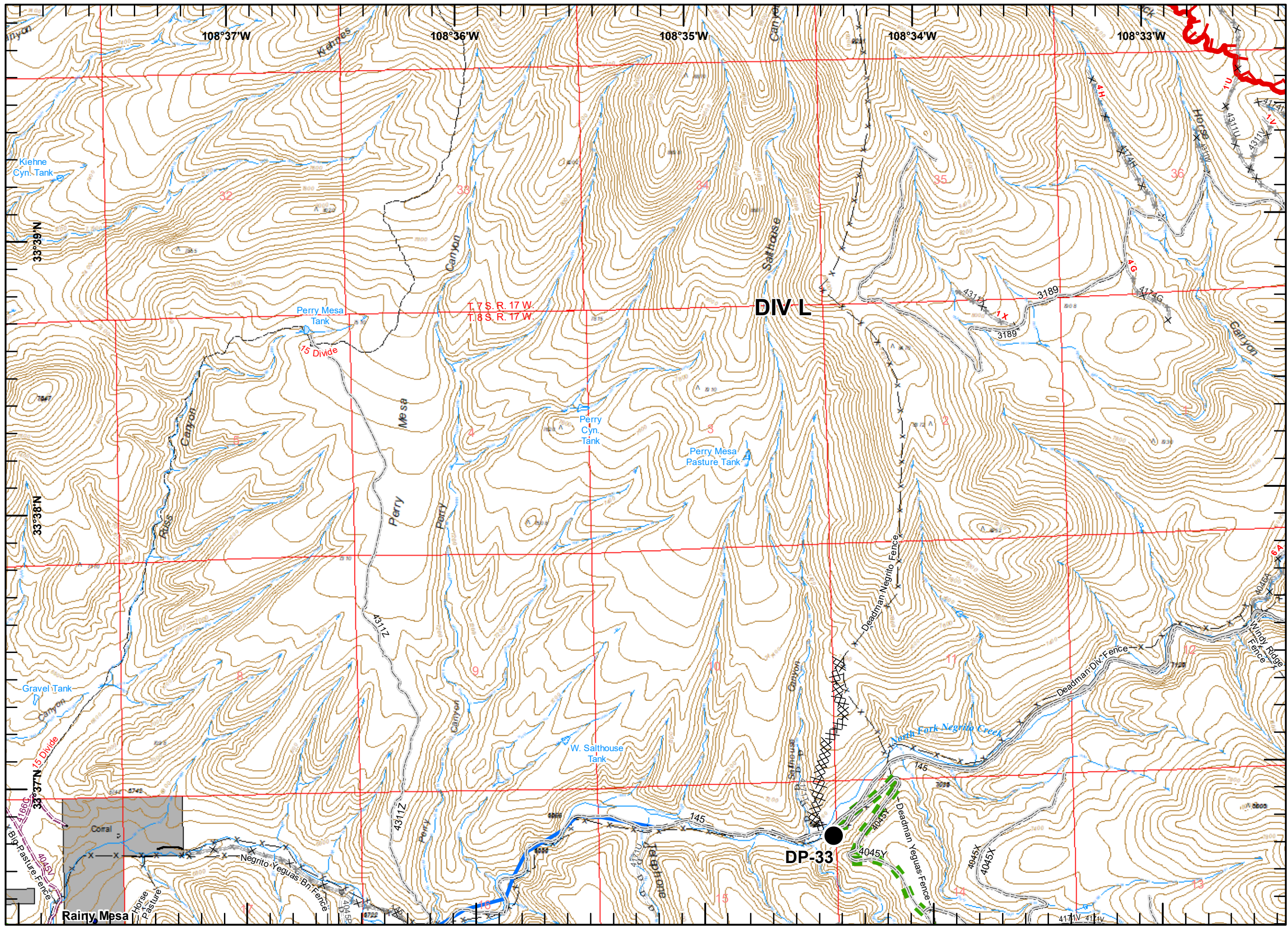


Miles

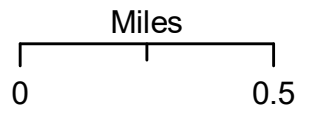
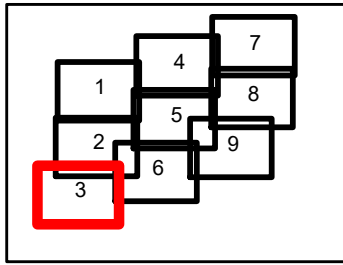


jro  
 6/1/2018 11:28:37 PM  
 ~24,341 ac  
 IR flight 06/1/18  
 0059 hours



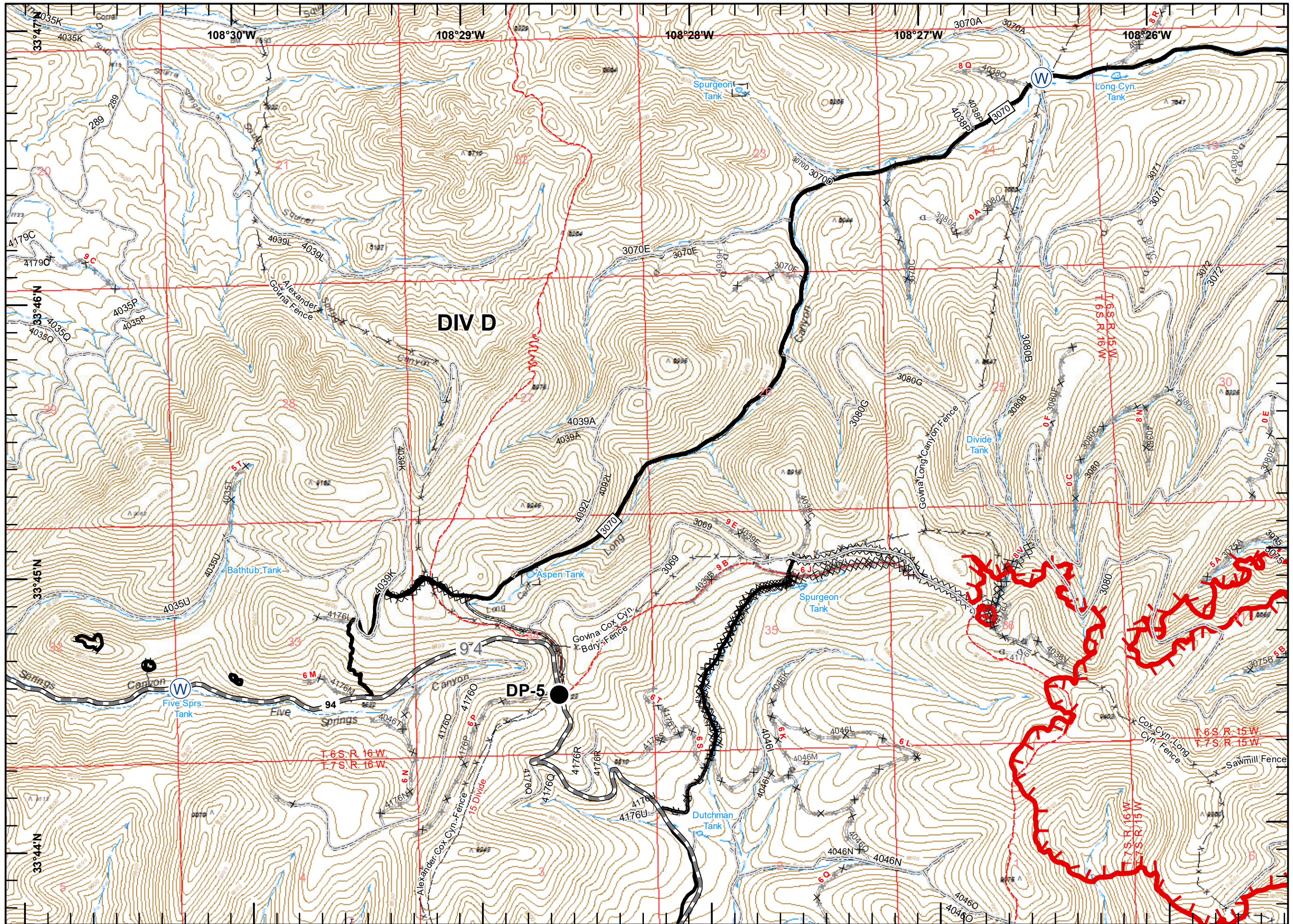


- Drop Point
- Uncontrolled Fire Edge
- XX Completed Dozer Line
- Access or Improved Road
- Planned Fire Line
- Escape Route
- Primary Line

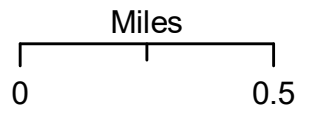
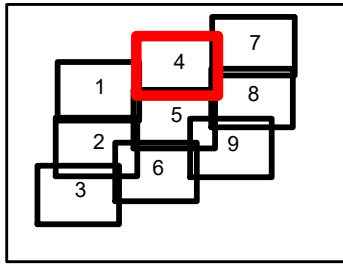


jro  
6/1/2018 11:28:37 PM  
~24,341 ac  
IR flight 06/1/18  
0059 hours



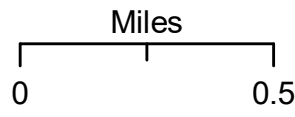
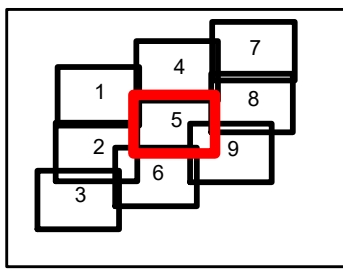
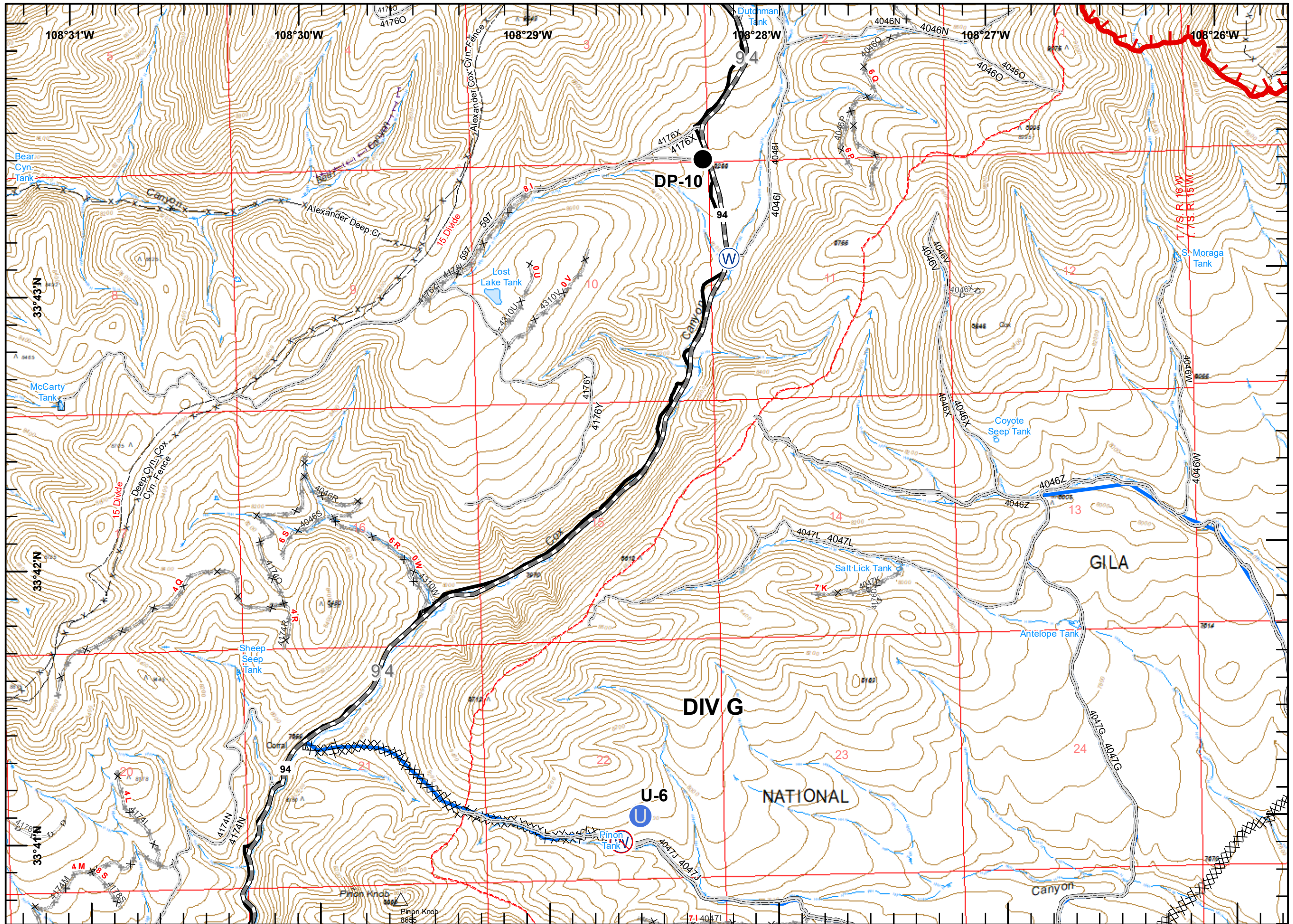


- Drop Point
- Water Source
- Uncontrolled Fire Edge
- Completed Line
- Completed Dozer Line
- Completed Hand Line
- Road as Completed Line
- Other



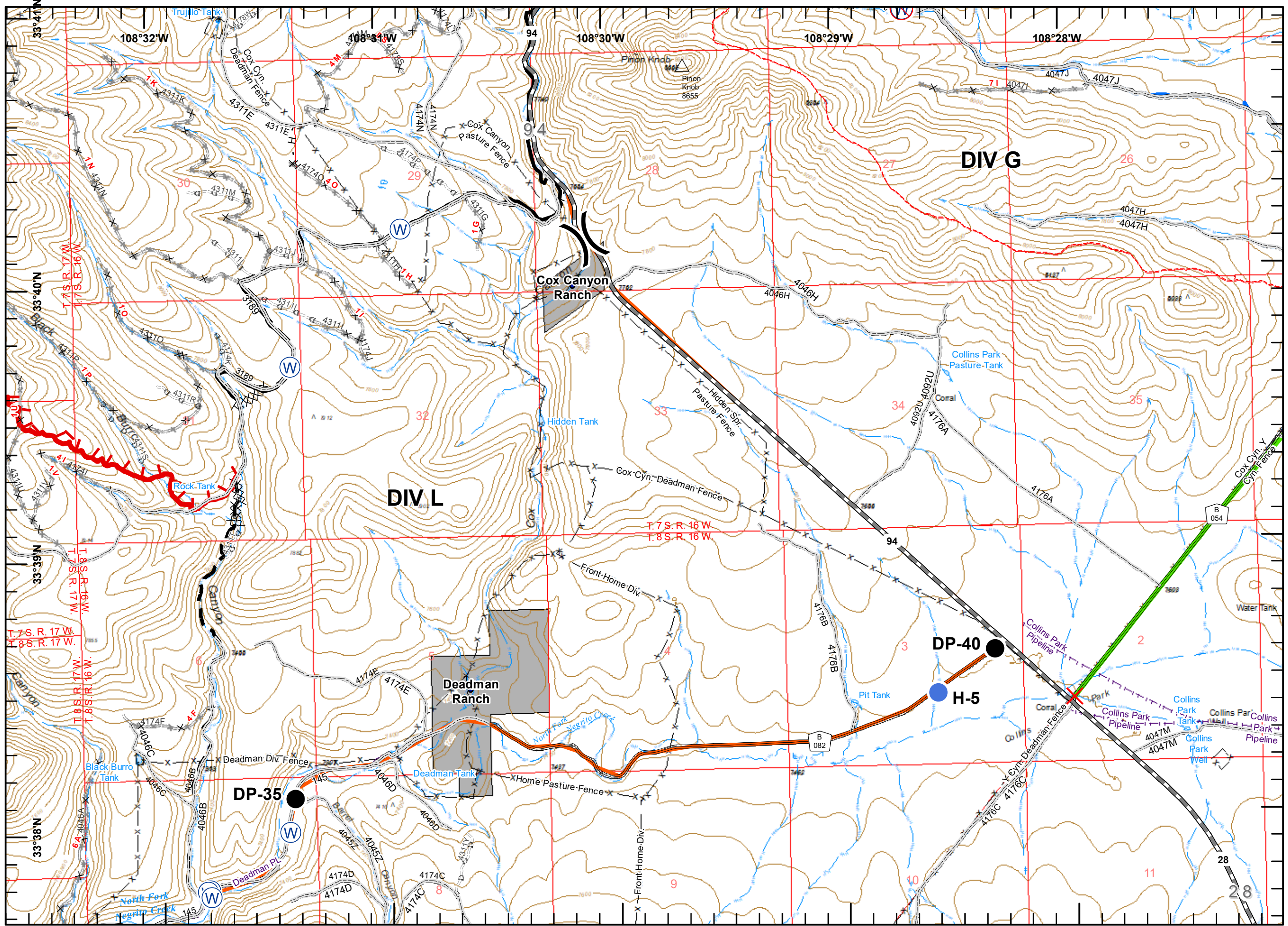
jro  
 6/1/2018 11:28:37 PM  
 ~24,341 ac  
 IR flight 06/1/18  
 0059 hours





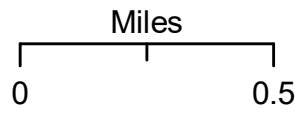
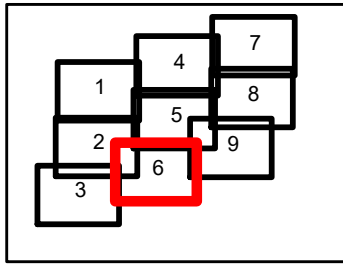
jro  
 6/1/2018 11:28:37 PM  
 ~24,341 ac  
 IR flight 06/1/18  
 0059 hours





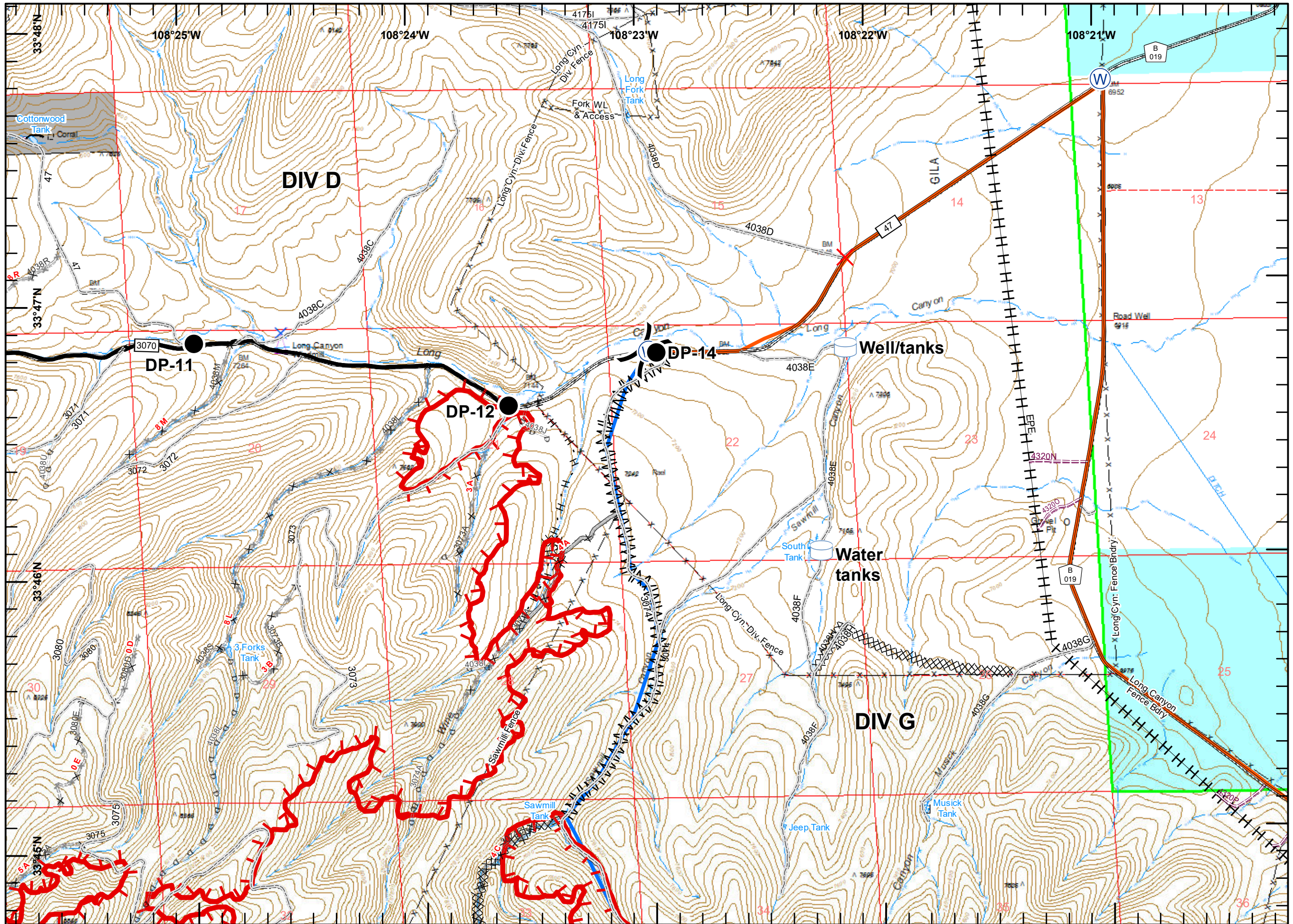
- Closure
- Division Break
- Drop Point
- Helispot
- Water Source
- Restricted Water Source

- Uncontrolled Fire Edge
- Completed Line
- Completed Dozer Line
- Completed Hand Line
- Access or Improved Road
- Planned Fire Line
- Primary Line
- Alternate Line
- Contingency Line

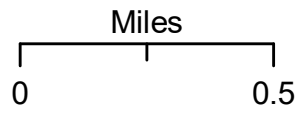
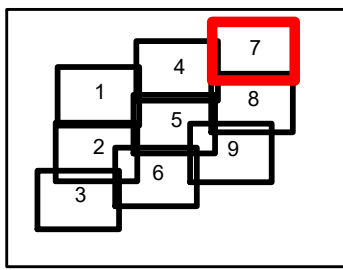


jro  
 6/1/2018 11:28:37 PM  
 ~24,341 ac  
 IR flight 06/1/18  
 0059 hours



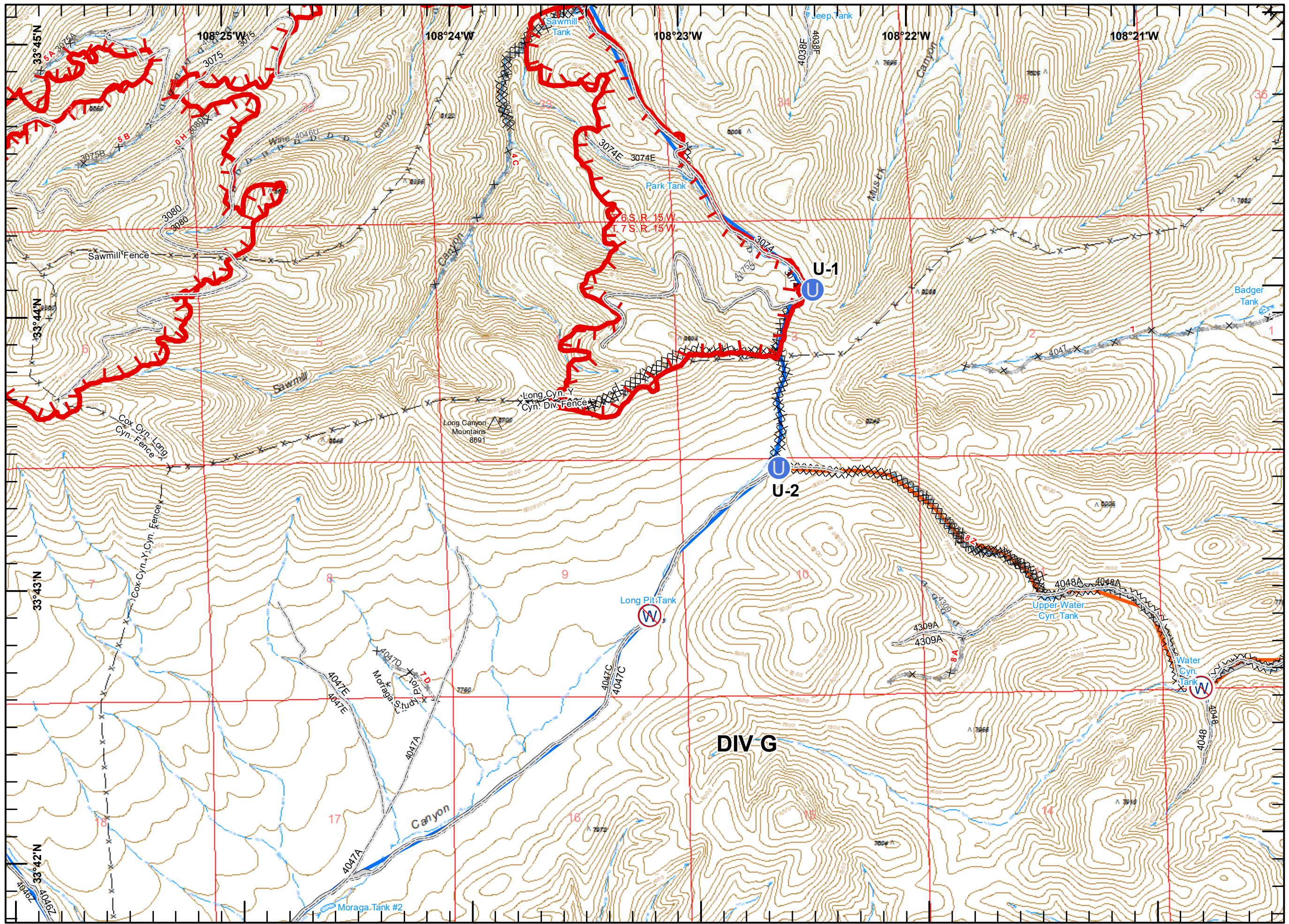


- Closure
- Division Break
- Drop Point
- Water Source
- Water Tank
- Transmission Line
- Uncontrolled Fire Edge
- Completed Line
- Completed Dozer Line
- Completed Hand Line
- Access or Improved Road
- Line Break Completed
- Planned Fire Line
- Primary Line
- Alternate Line

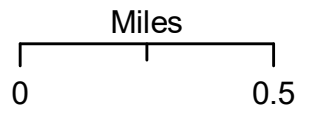
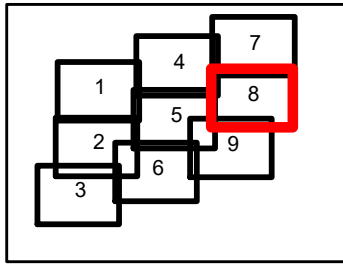


jro  
 6/1/2018 11:28:37 PM  
 ~24,341 ac  
 IR flight 06/1/18  
 0059 hours



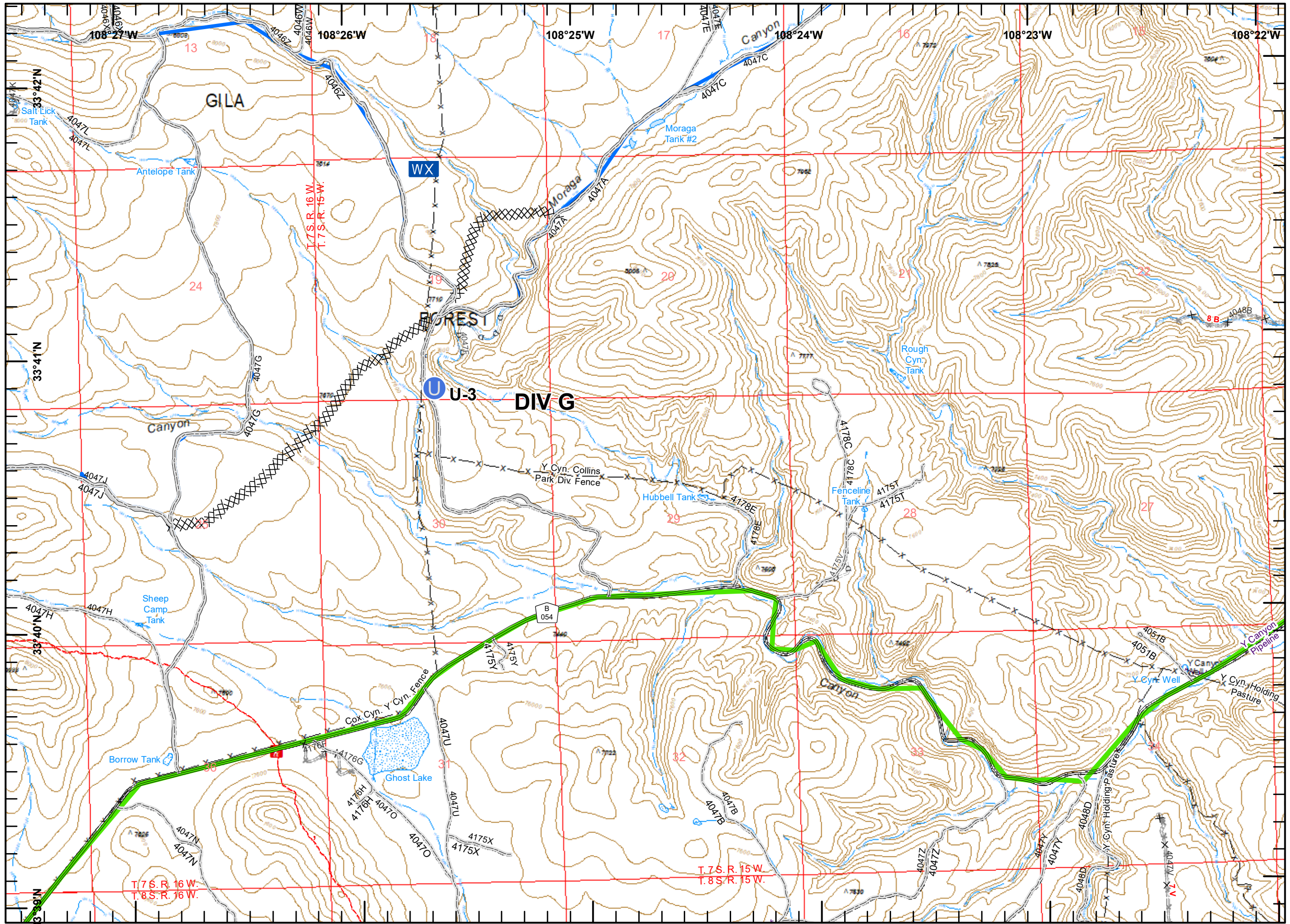


- Unimproved Landing Area
- Restricted Water Source
- Transmission Line
- Uncontrolled Fire Edge
- Completed Dozer Line
- Access or Improved Road
- Planned Fire Line
- Primary Line
- Alternate Line

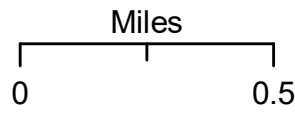
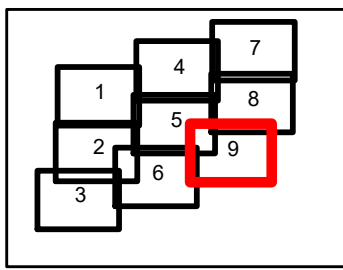


jro  
 6/1/2018 11:28:37 PM  
 ~24,341 ac  
 IR flight 06/1/18  
 0059 hours





- Unimproved Landing Area
- Mobile Weather Unit
- Completed Dozer Line
- Access or Improved Road
- Primary Line
- Contingency Line



jro  
 6/1/2018 11:28:37 PM  
 ~24,341 ac  
 IR flight 06/1/18  
 0059 hours