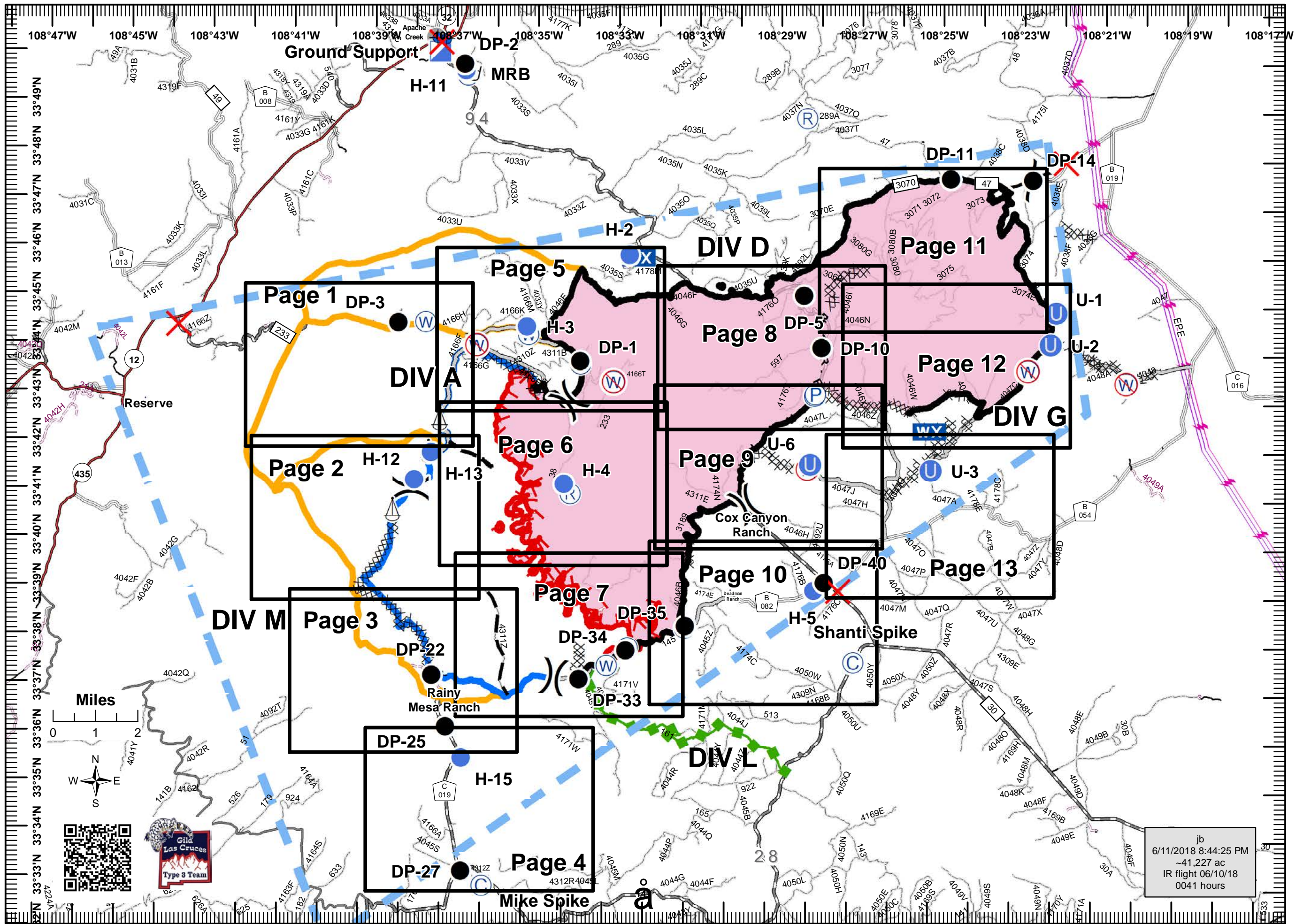



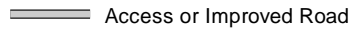

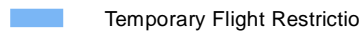


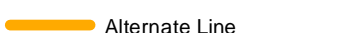



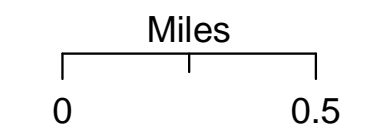
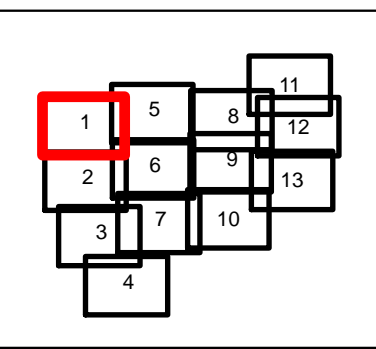



Buzzard IAP
NM-GNF-190
6/12/18
Day
NAD 83 UTM 12
Index Map

- Camp
- Closure
- Dip Site
- Drop Point
- Unimproved Landing Area
- Helispot
- Incident Command Post
- Mobile Weather Unit
- Pump
- Repeater
- Retardant/Mud Pit
- Sling Site
- Water Source
- Restricted Water Source
- Other
- Division Break
- Uncontrolled Fire Edge
- Completed Line
- Completed Dozer Line
- H - Completed Hand Line
- R - Road as Completed Line
- Access or Improved Road
- Proposed Dozer Line
- Planned Fire Line
- Temporary Flight Restriction
- Escape Route
- Wildfire Daily Fire Perimeter
- Wildfire Final Fire Perimeter
- Primary Line
- Alternate Line
- Transmission Line

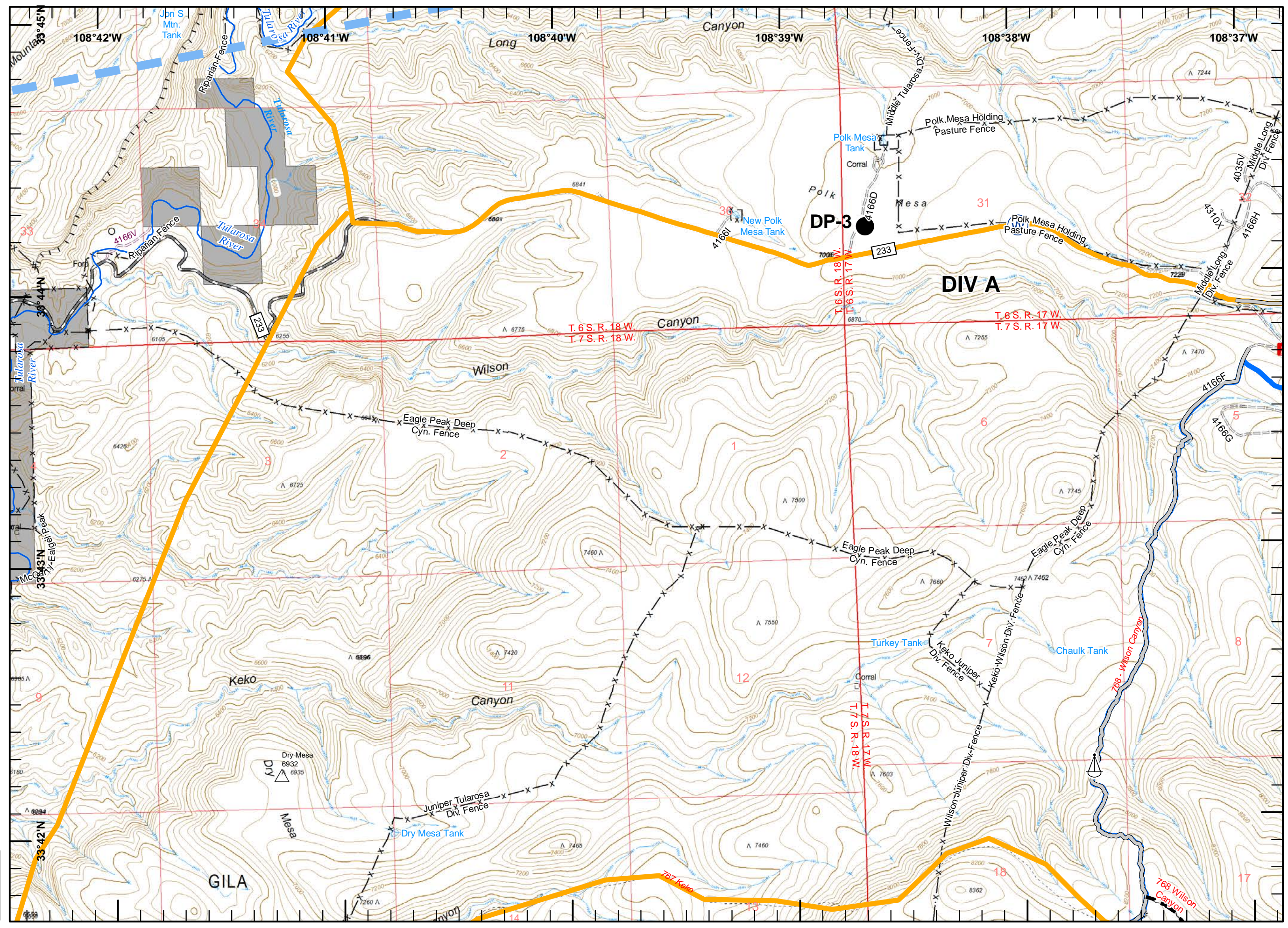


-  Drop Point
-  Sling Site
-  Water Source
-  Access or Improved Road
-  Planned Fire Line
-  Temporary Flight Restriction
-  Mountain Peak
-  Primary Lines
-  Alternate Line
-  Major Stream
-  Fence
-  Natural Barrier

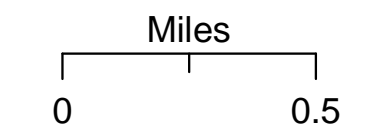
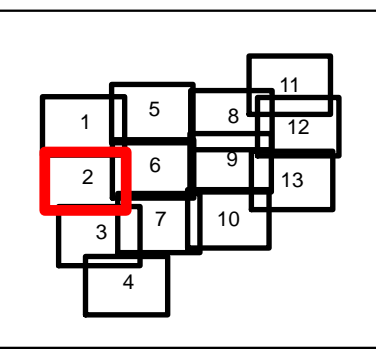





 jb
 6/11/2018 9:17:07 PM
 -41,227 ac
 IR Ac - 0610
 0041 hours

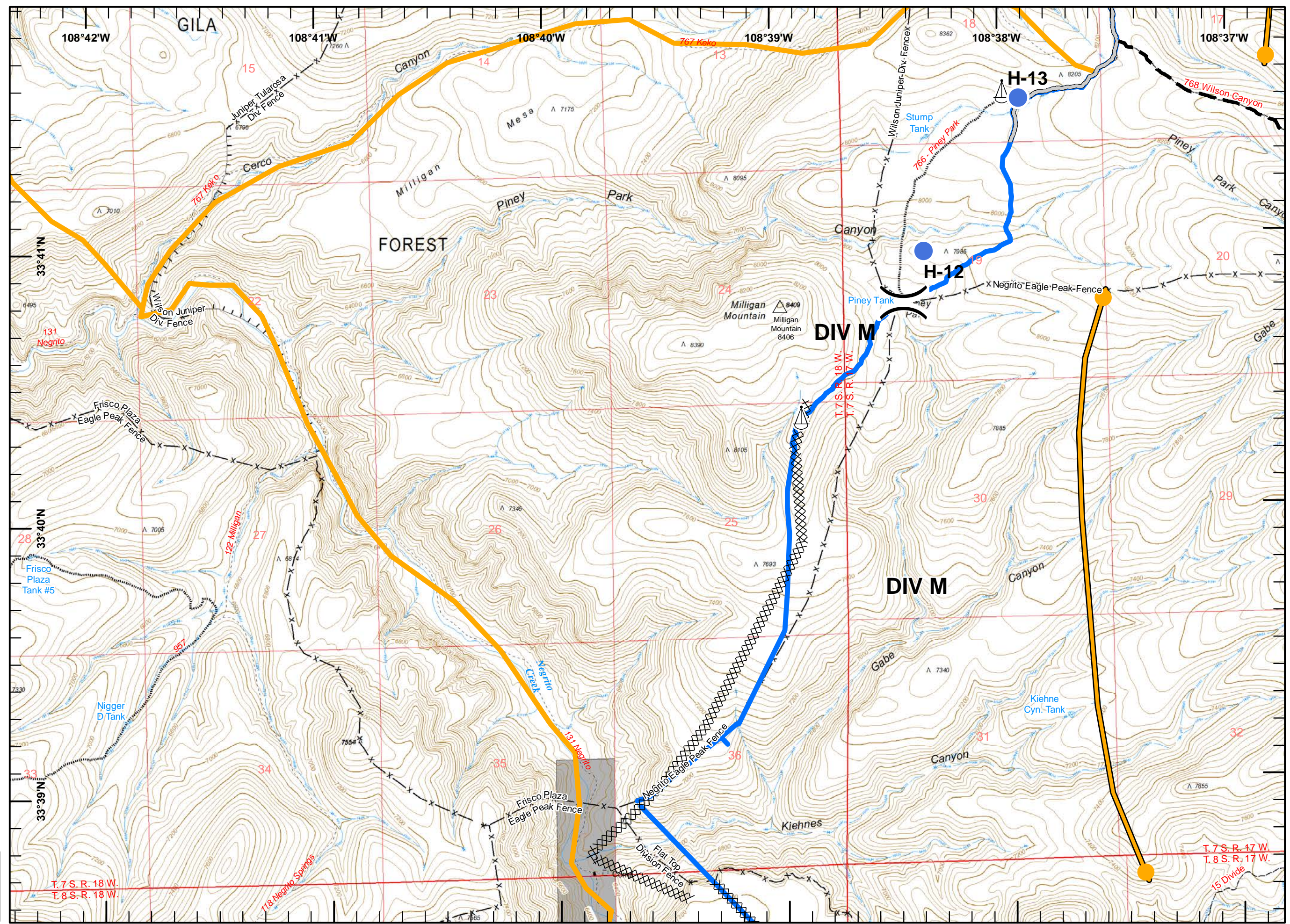


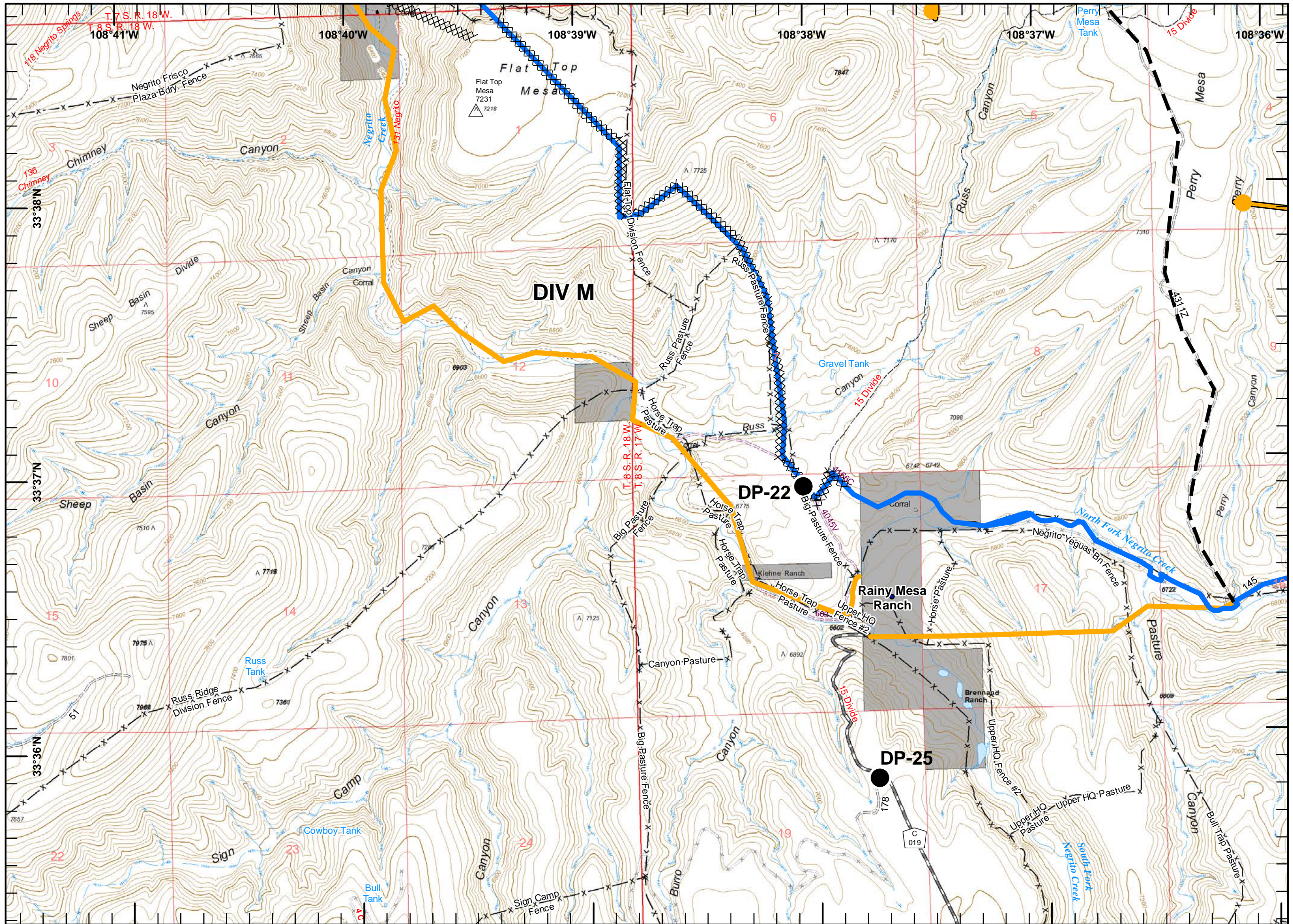
-  Division Break
-  Helispot
-  Sling Site
-  Completed Dozer Line
-  Access or Improved Road
-  Planned Fire Line
-  Management Action Point
-  Mountain Peak
-  Primary Lines
-  Alternate Line
-  Fence
-  Natural Barrier








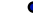
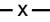


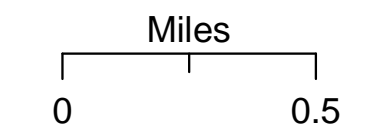
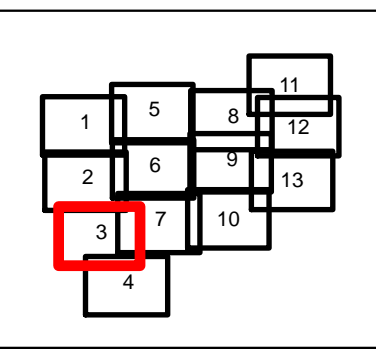



 jb
 6/11/2018 9:17:07 PM
 -41,227 ac
 IR Ac - 0610
 0041 hours








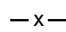


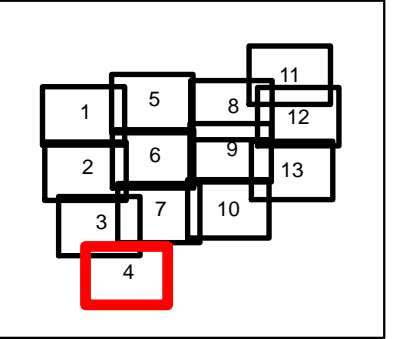
-  Drop Point
-  Completed Dozer Line
-  Planned Fire Line
-  Management Action Point
-  Mountain Peak
-  Primary Lines
-  Alternate Line
-  Private_Names
-  Fence





 jb
 6/11/2018 9:17:07 PM
 ~41,227 ac
 IR Ac - 0610
 0041 hours

-  Camp
-  Drop Point
-  Helispot
-  Temporary Flight Restriction
-  Mountain Peak
-  Fence

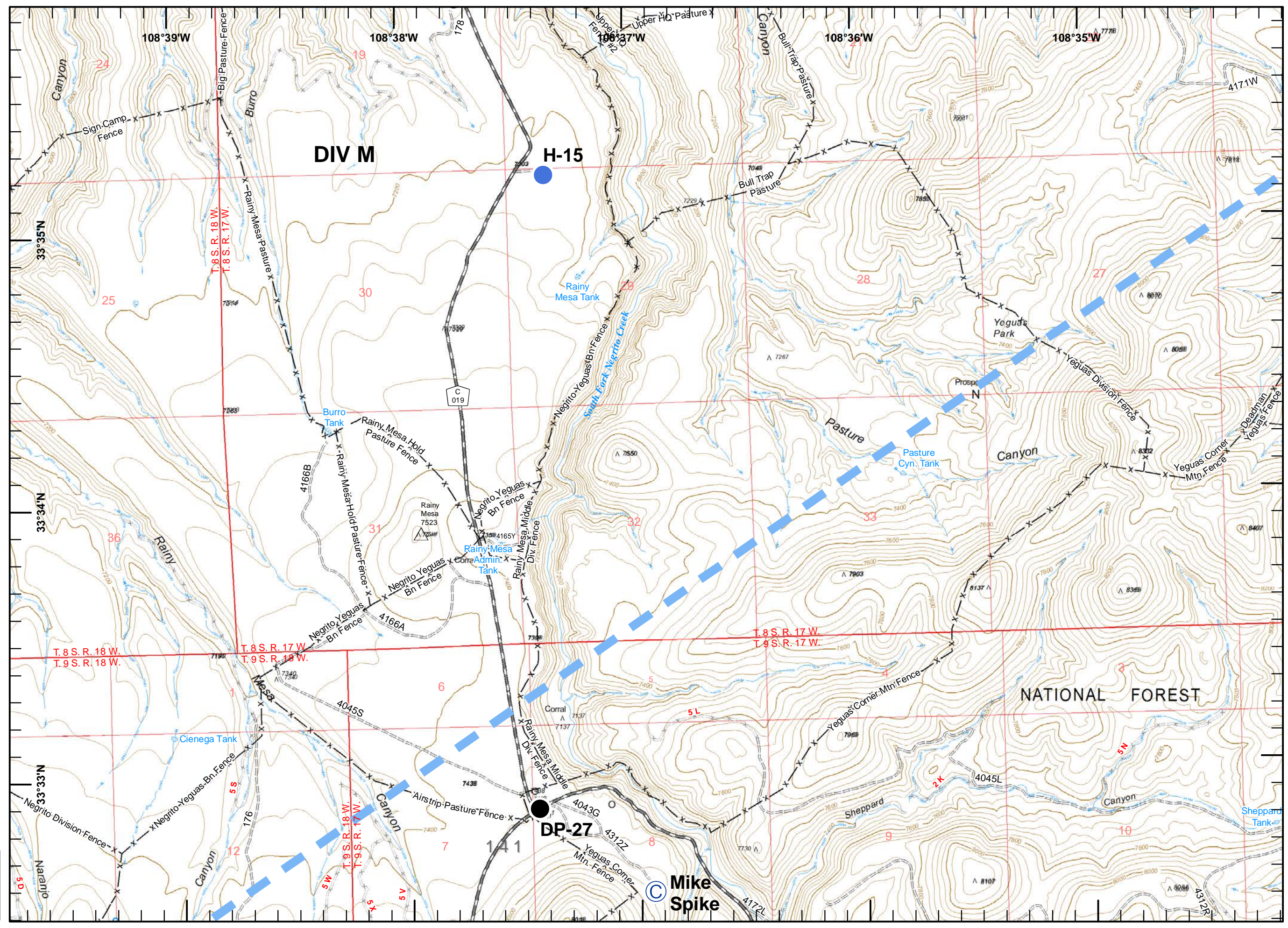














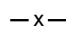
Miles

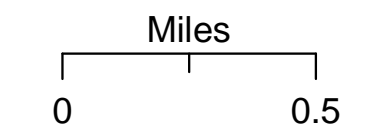
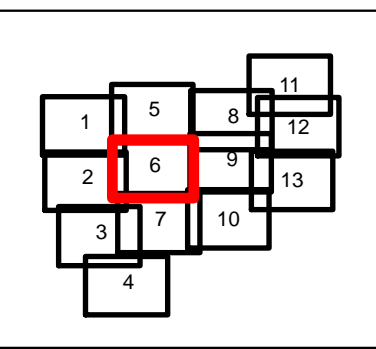
0 0.5

W N E S

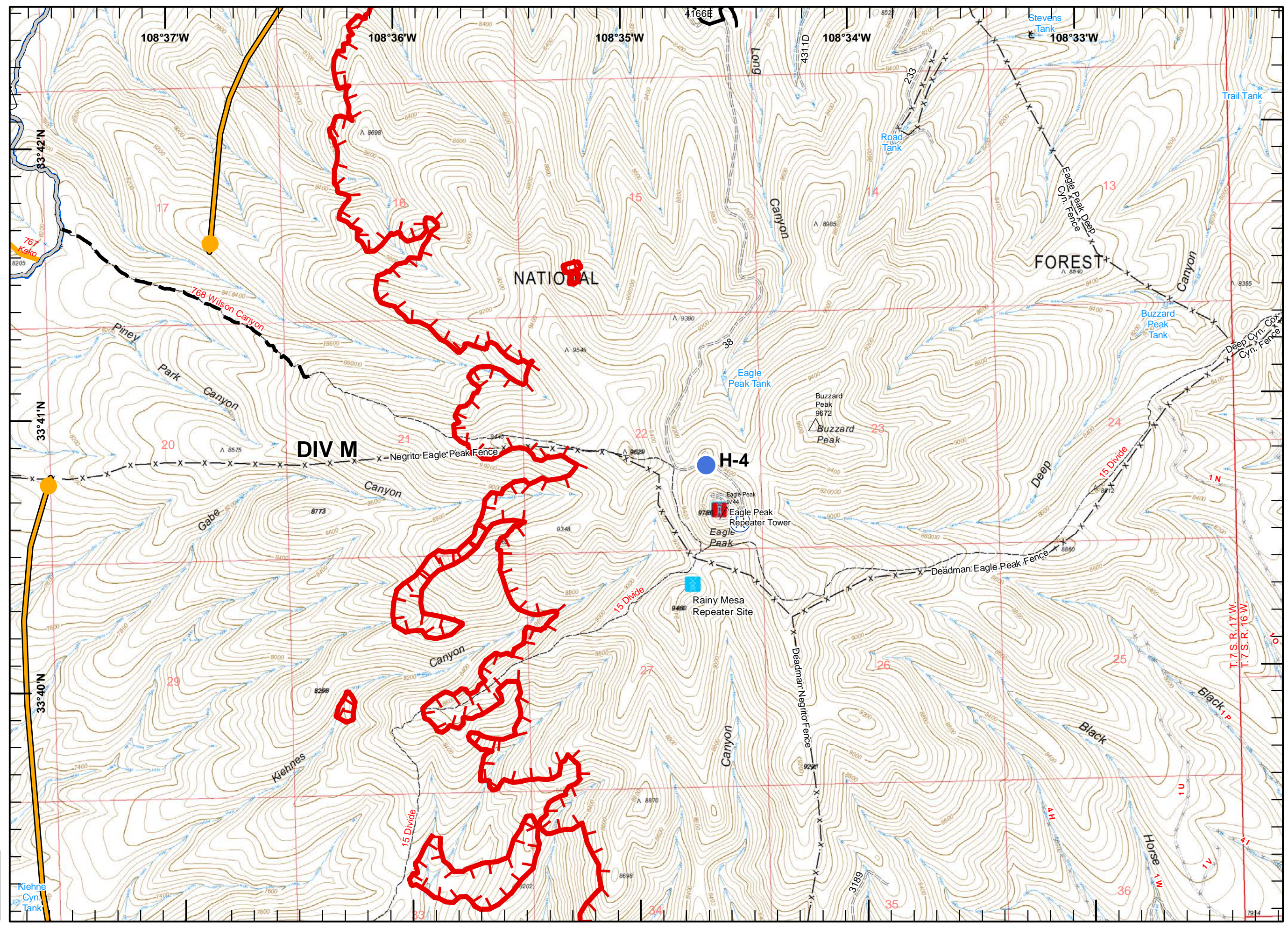
jb
 6/11/2018 9:17:07 PM
 -41,227 ac
 IR Ac - 0610
 0041 hours



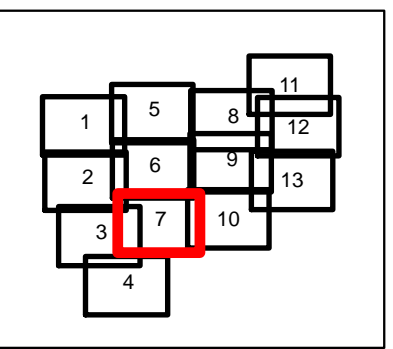
-  Division Break
-  Helispot
-  Repeater
-  Sling Site
-  Uncontrolled Fire Edge
-  Completed Line
-  Access or Improved Road
-  Planned Fire Line
-  Management Action Point
-  Mountain Peak
-  Primary Lines
-  Alternate Line
-  Fence



jb
 6/11/2018 9:17:07 PM
 -41,227 ac
 IR Ac - 0610
 0041 hours

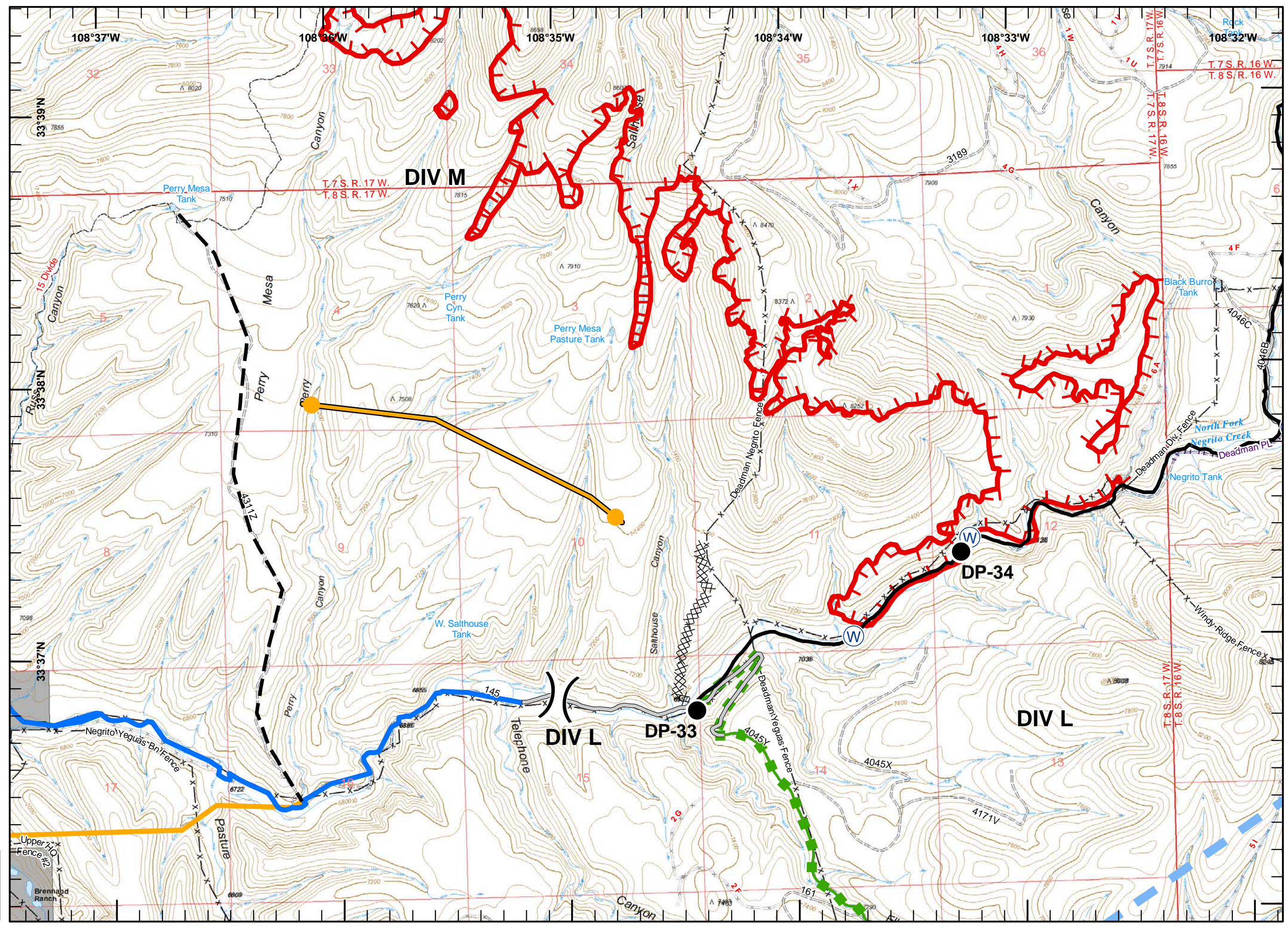











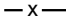
- Division Break
- Drop Point
- Water Source
- Uncontrolled Fire Edge
- Completed Line
- Completed Dozer Line
- Completed Hand Line
- Access or Improved Road
- Planned Fire Line
- Temporary Flight Restriction
- Escape Route
- Management Action Point
- Primary Lines
- Alternate Line
- Fence

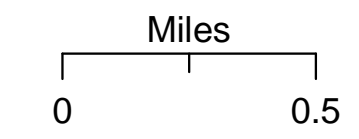
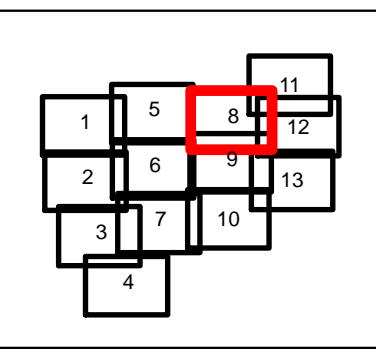



Miles
 0 0.5

jb
 6/11/2018 9:17:07 PM
 -41,227 ac
 IR Ac - 0610
 0041 hours

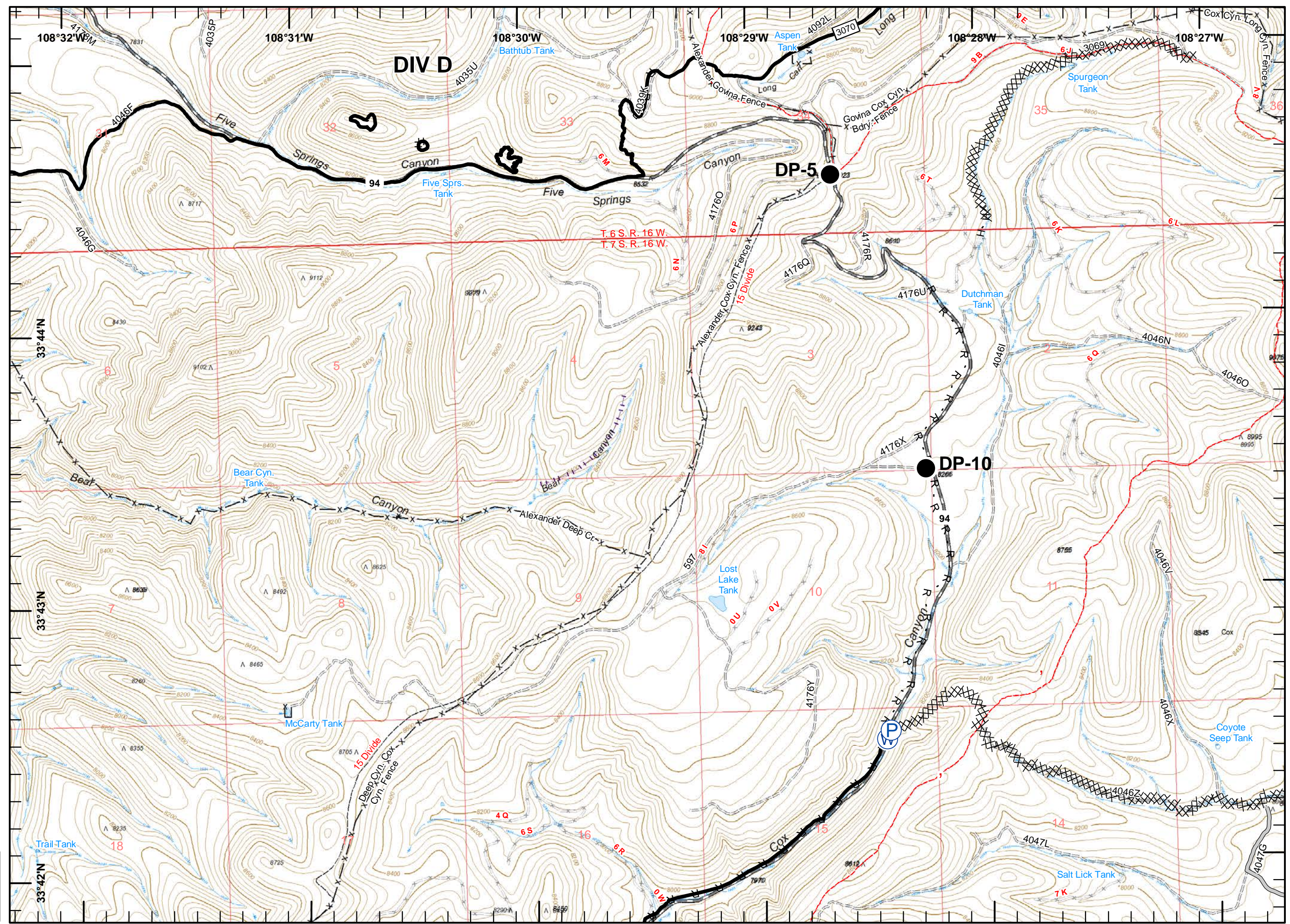









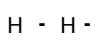
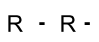




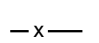
-  Drop Point
-  Pump
-  Water Source
-  Completed Line
-  Completed Dozer Line
-  Completed Hand Line
-  Road as Completed Line
-  Access or Improved Road
-  Continental Divide NST
-  Fence

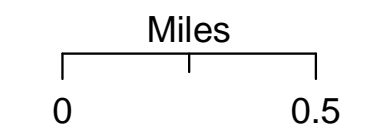
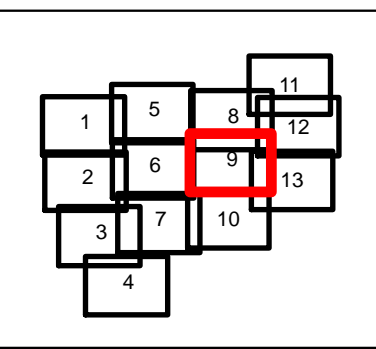




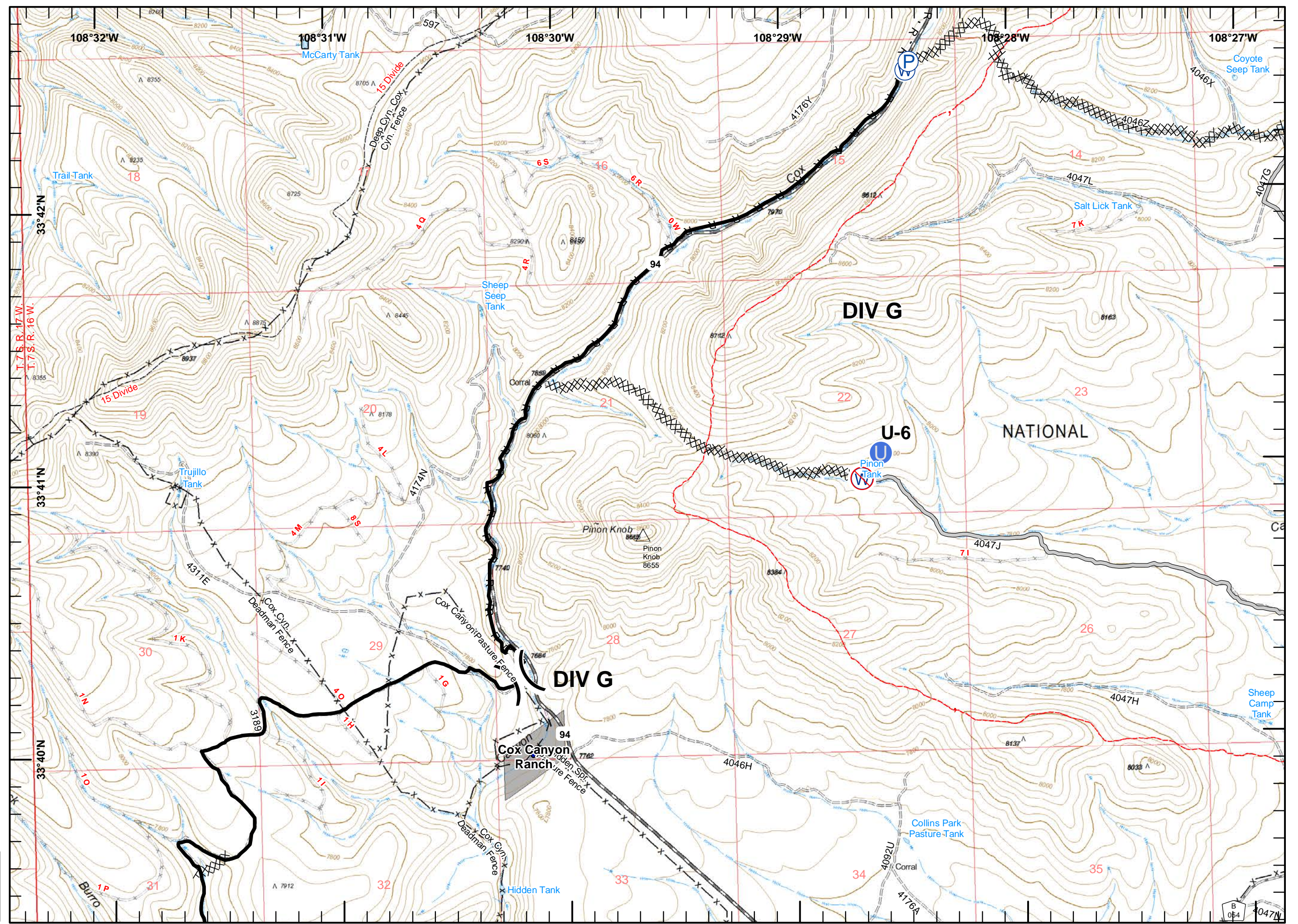
 jb
 6/11/2018 9:17:07 PM
 -41,227 ac
 IR Ac - 0610
 0041 hours



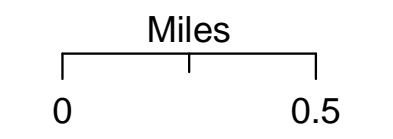
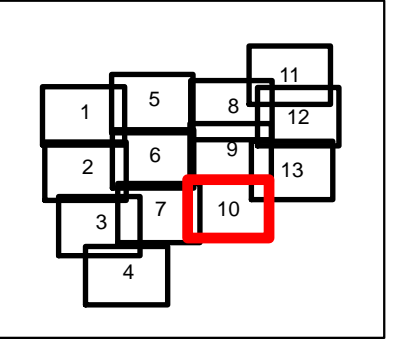
-  Division Break
-  Unimproved Landing Area
-  Pump
-  Water Source
-  Restricted Water Source
-  Completed Line
-  Completed Dozer Line
-  Completed Hand Line
-  Road as Completed Line
-  Access or Improved Road
-  Mountain Peak
-  Continental Divide NST
-  Private Names
-  Fence




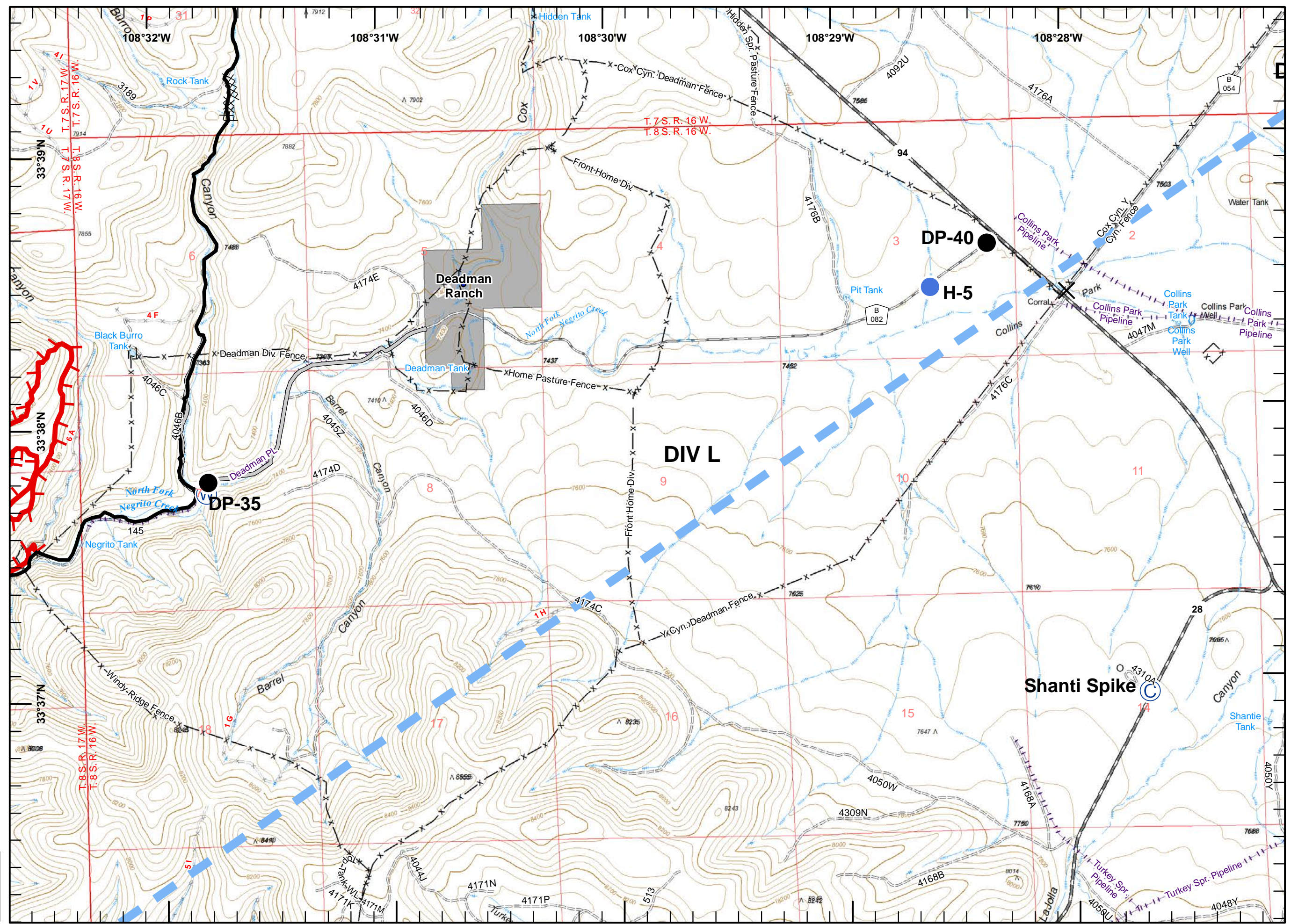
jb
 6/11/2018 9:17:07 PM
 -41,227 ac
 IR Ac - 0610
 0041 hours

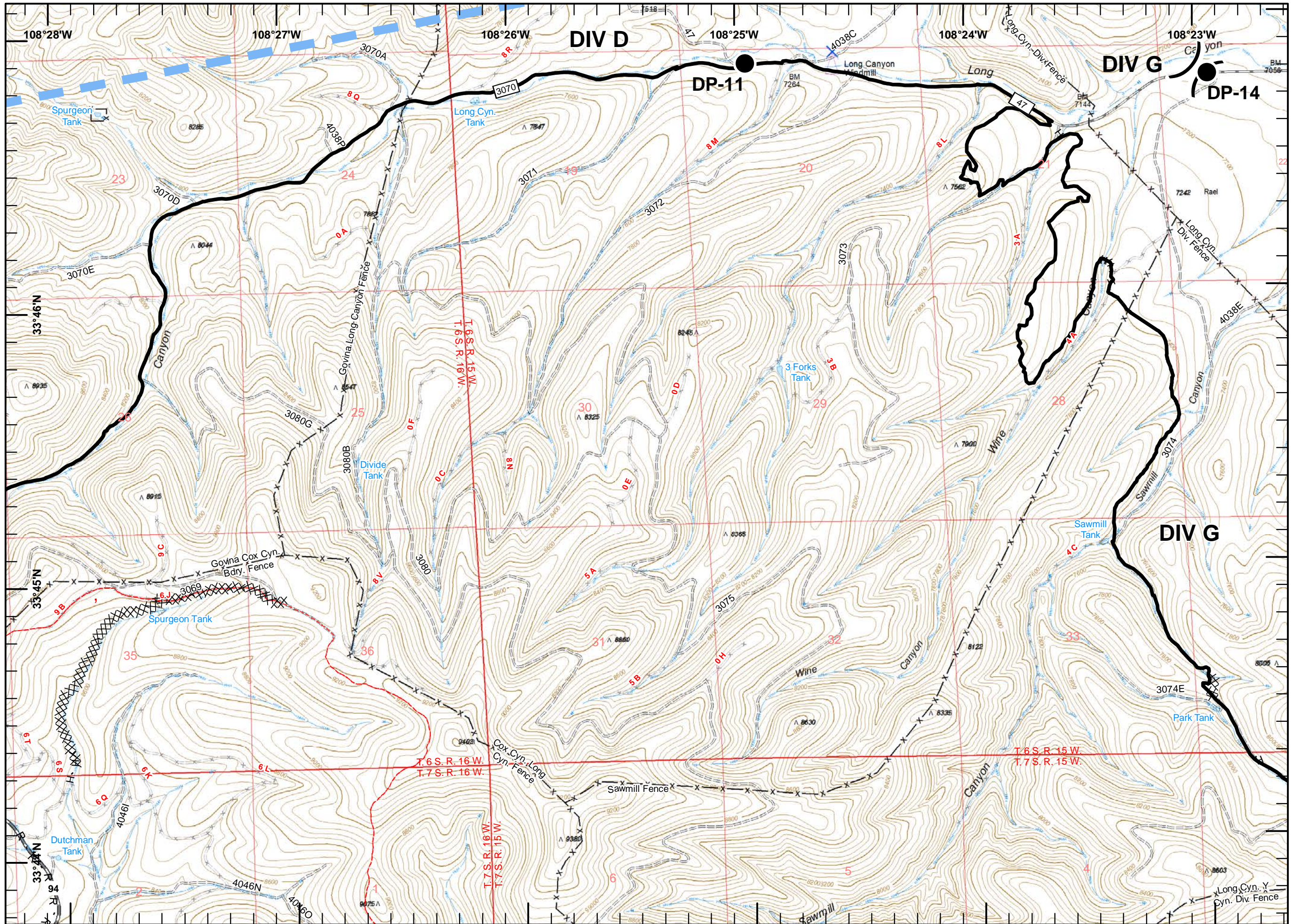


-  Camp
-  Closure
-  Drop Point
-  Helispot
-  Water Source
-  Uncontrolled Fire Edge
-  Completed Line
-  Completed Dozer Line
-  Access or Improved Road
-  Temporary Flight Restriction
-  Private Names
-  Fence

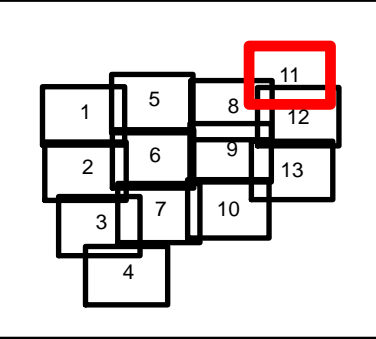



 W N E S
 jb
 6/11/2018 9:17:07 PM
 -41,227 ac
 IR Ac - 0610
 0041 hours





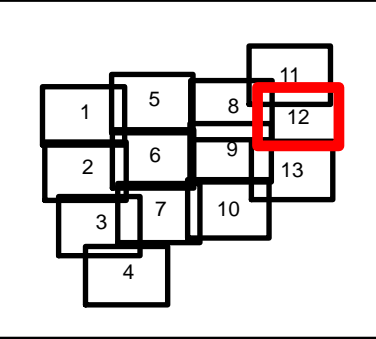
- Division Break
- Drop Point
- Completed Line
- Completed Dozer Line
- Completed Hand Line
- Road as Completed Line
- Temporary Flight Restriction
- Continental Divide NST
- Fence



Miles
 0 0.5

jb
 6/11/2018 9:17:07 PM
 -41,227 ac
 IR Ac - 0610
 0041 hours

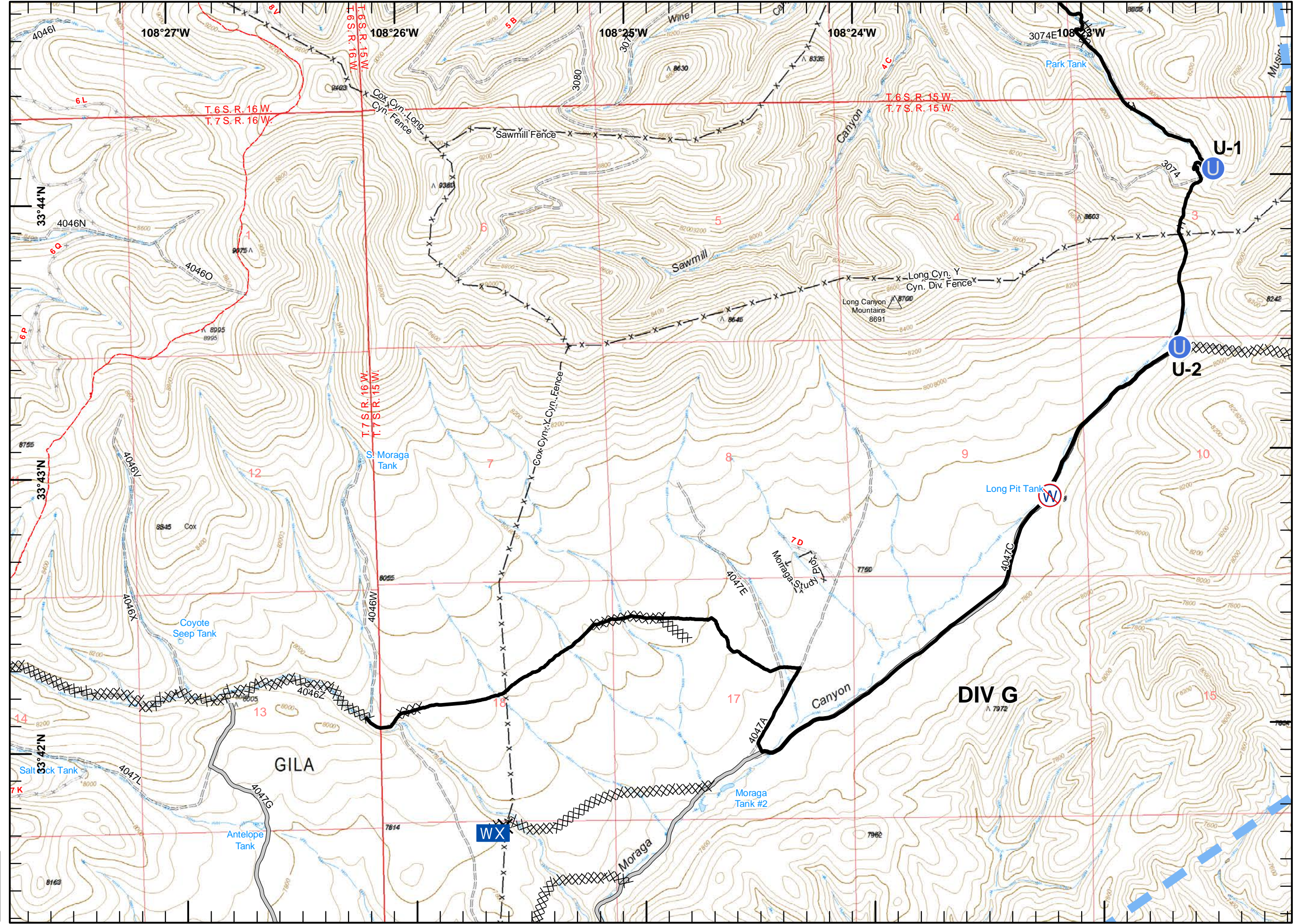
- Unimproved Landing Area
- Mobile Weather Unit
- Restricted Water Source
- Completed Line
- Completed Dozer Line
- Completed Hand Line
- Access or Improved Road
- Proposed Dozer Line
- Temporary Flight Restriction
- Mountain Peak
- Continental Divide NST
- Fence

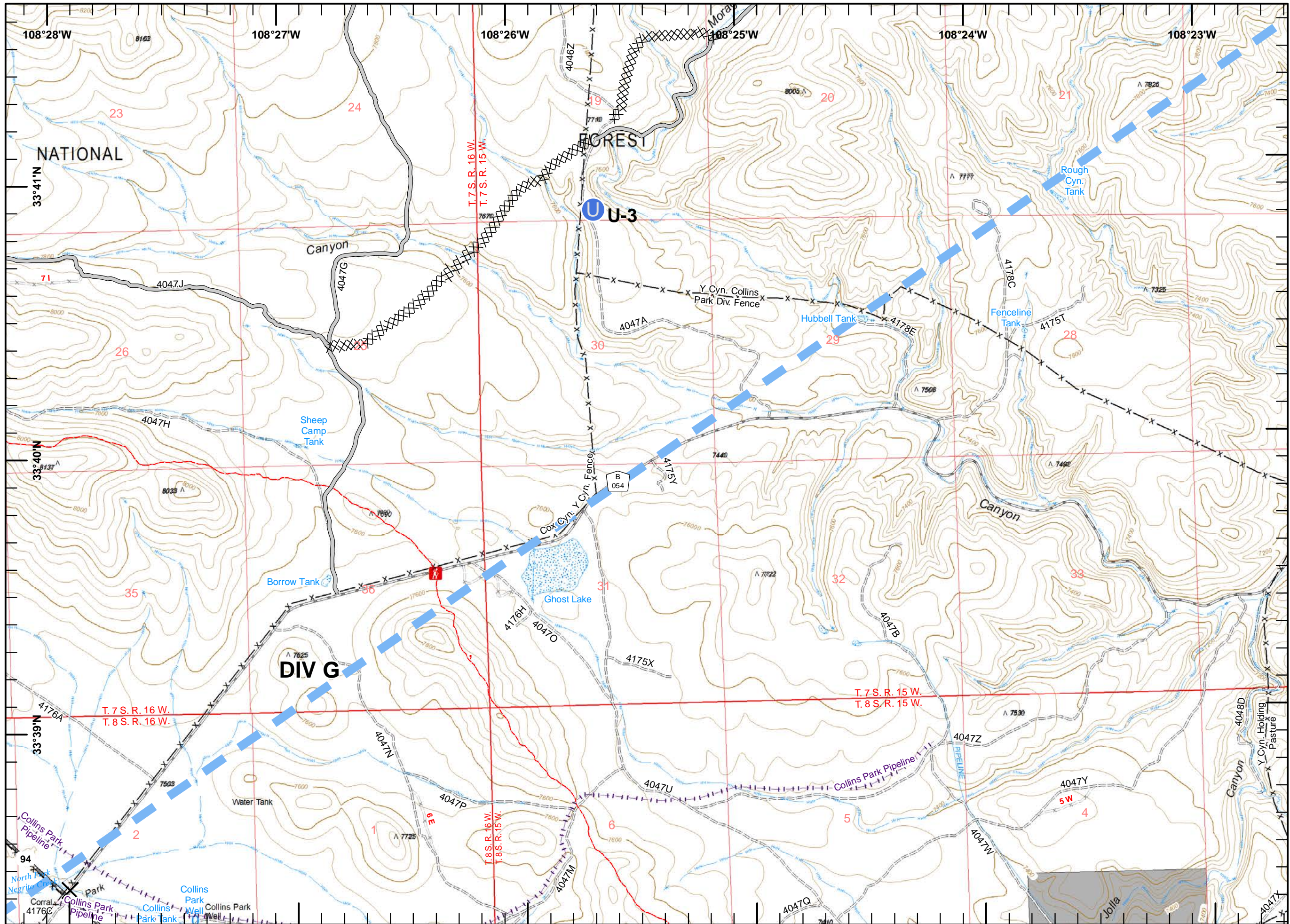


Miles

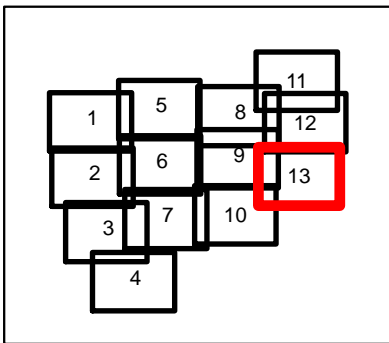
0 0.5

jb
 6/11/2018 9:17:07 PM
 -41,227 ac
 IR Ac - 0610
 0041 hours





- Closure
- Unimproved Landing Area
- Completed Dozer Line
- Access or Improved Road
- Temporary Flight Restriction
- Continental Divide NST
- Fence



Miles

0 0.5



jb
 6/11/2018 9:17:07 PM
 -41,227 ac
 IR Ac - 0610
 0041 hours