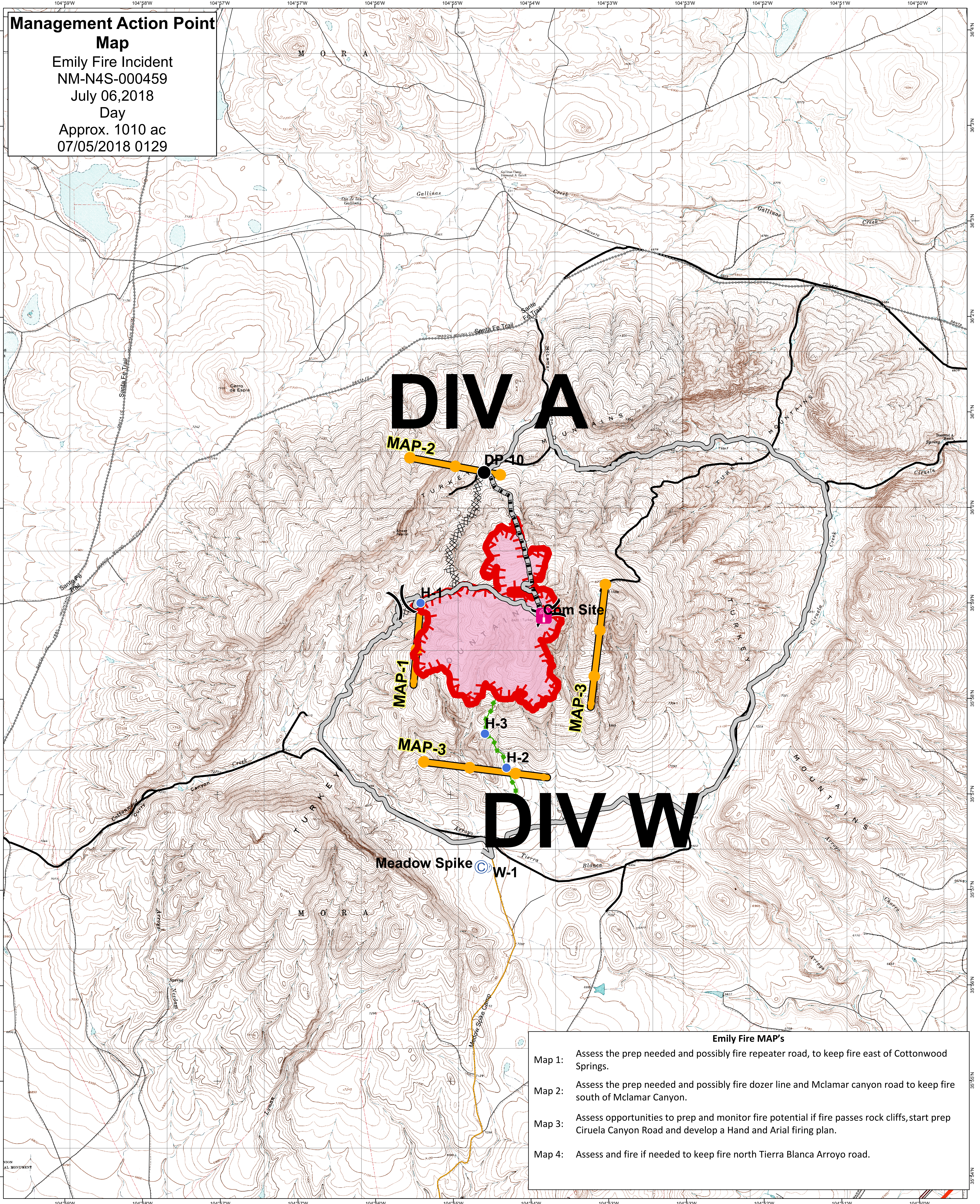


**Management Action Point
Map**
 Emily Fire Incident
 NM-N4S-000459
 July 06, 2018
 Day
 Approx. 1010 ac
 07/05/2018 0129



- Emily Fire MAP's**
- Map 1: Assess the prep needed and possibly fire repeater road, to keep fire east of Cottonwood Springs.
 - Map 2: Assess the prep needed and possibly fire dozer line and Mclamar canyon road to keep fire south of Mclamar Canyon.
 - Map 3: Assess opportunities to prep and monitor fire potential if fire passes rock cliffs, start prep Ciruela Canyon Road and develop a Hand and Arial firing plan.
 - Map 4: Assess and fire if needed to keep fire north Tierra Blanca Arroyo road.

jr
7/5/2018
6:24:06 PM
NAD83

1:18,000

Camp Site	Other	Access or Improved Road	Service
Camp	Division Break	Escape Route	Track
Drop Point	Uncontrolled Fire Edge	Management Action Point	Sections
Hellsport	Completed Dozer Line	Power Line	Roads
Water Source		Road Class	Interstates Highways
		Residential	Wildfire Daily Fire Perimeter