

104°55'0"W

104°54'30"W

104°54'0"W

104°53'30"W



### INFRARED MAP

Emily

NM-N4S-000459

Interpreted (IR) Acres: 208

July 1, 2018 @ 0222 MDT

*IRIN: Cheron Ferland*

*Nad83 UTM Zone 13*

35°59'0"N

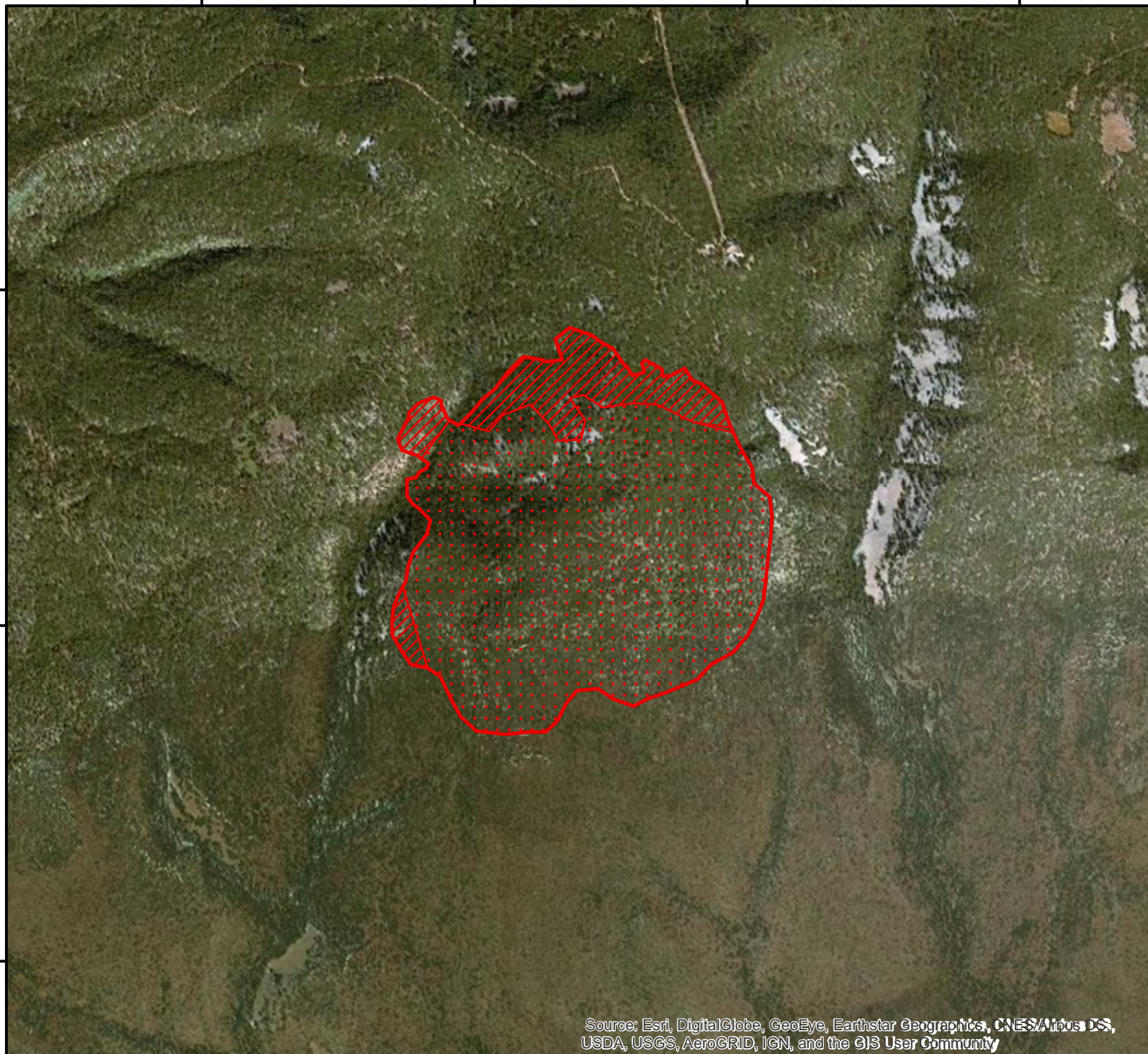
35°59'0"N

35°58'30"N




35°58'30"N

35°58'0"N

35°58'0"N



Source: Esri, DigitalGlobe, GeoEye, Earthstar Geographics, CNES/Airbus DS, USDA, USGS, AeroGRID, IGN, and the GIS User Community

-  Isolated Heat
-  Heat Perimeter
-  Intense Heat
-  Scattered Heat



0 0.075 0.15 0.3 Miles