

104°56'0"W 104°55'30"W 104°55'0"W 104°54'30"W 104°54'0"W 104°53'30"W 104°53'0"W



### INFRARED MAP

Emily  
NM-N4S-000459  
Interpreted (IR) Acres: 1,010  
July 5, 2018 @ 0129 MDT

*IRIN: Cheron Ferland  
Nad83 UTM Zone 13*

36°0'0"N

35°59'30"N

35°59'0"N

35°58'30"N

35°58'0"N

36°0'0"N

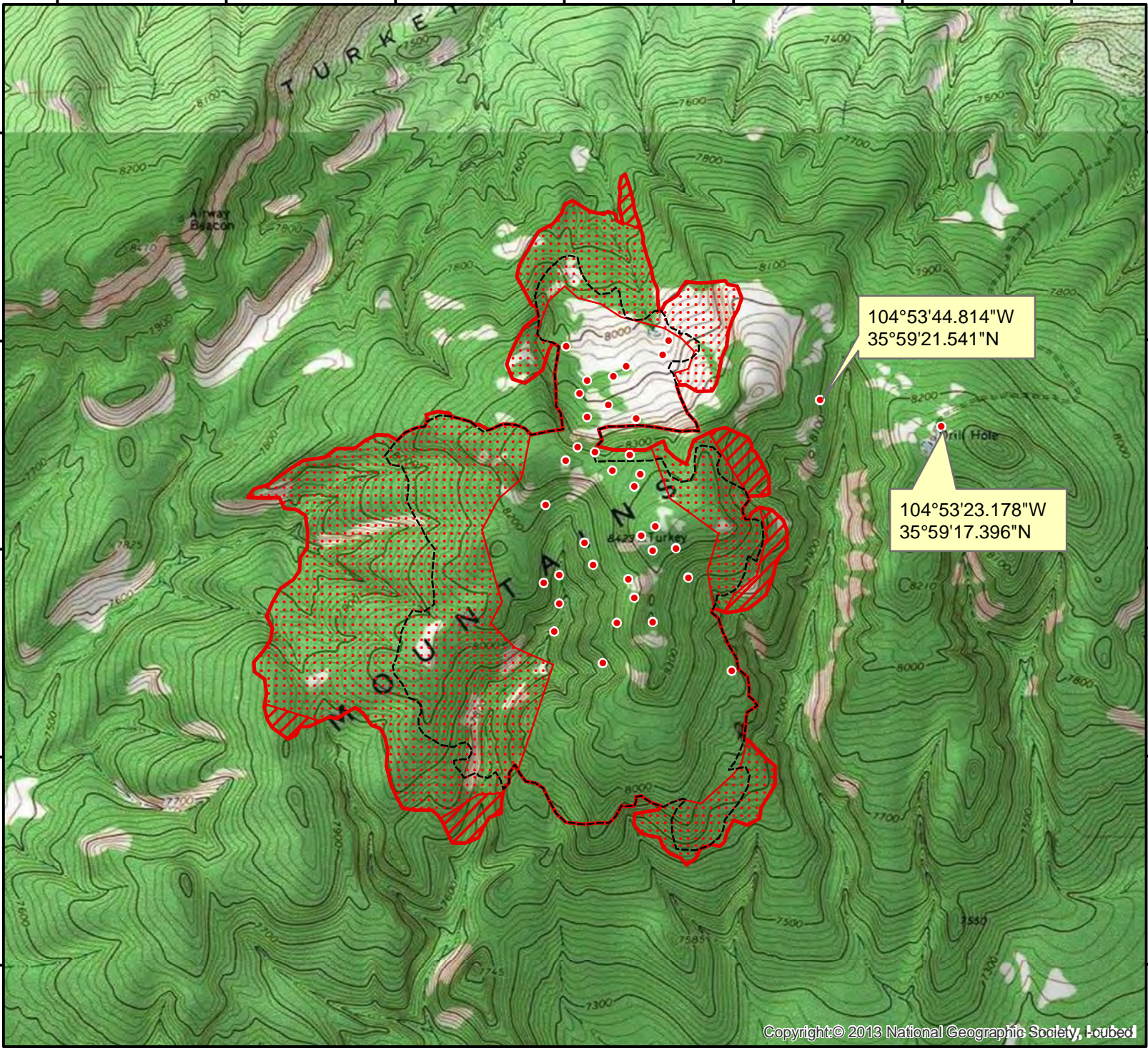
35°59'30"N

35°59'0"N

35°58'30"N

35°58'0"N

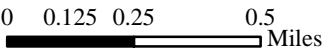
104°56'0"W 104°55'30"W 104°55'0"W 104°54'30"W 104°54'0"W 104°53'30"W 104°53'0"W



104°53'44.814"W  
35°59'21.541"N

104°53'23.178"W  
35°59'17.396"N

- Isolated Heat
- Previous Heat Perimeter
- Heat Perimeter
- Intense Heat
- Scattered Heat



Copyright © 2013 National Geographic Society, Inc.