

MORRIS CREEK

NM-N2S-000489

Incident Action Plan

SOUTHWEST AREA



**INCIDENT
MANAGEMENT TEAM 3**



**Financial Codes
PNLXN1 (1502) [P]**

GPS Points can be collected in either WGS84 OR NAD83

Morris Creek Fire Information: (575) 383 4597 8am to 9pm

**7/4/2018 thru 7/4/2018
0600 to 2000**

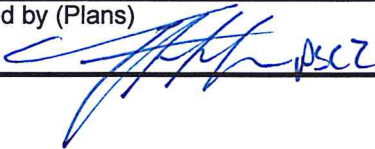

SOUTHWEST AREA



VALUES AT RISK

- **Emergency Responders and the Public**
- **CS Ranch and associated infrastructure**
- **UU Bar Ranch and associated infrastructure**
- **Philmont Scout Ranch and associated infrastructure**
- **State Trust Lands**
- **Watersheds**
- **Grazing Lands**
- **Local Infrastructure, Utilities and Power Lines**

Incident Objectives List (ICS 202)

1. Incident Name	2. Date Prepared	3. Time Prepared
MORRIS CREEK	7/3/2018	1800
4. Operational Period (Date and Time)		
From: 7/4/2018 at: 0600	From: 7/4/2018	at: 2000
5. General Control Objectives for the Incident (include Alternatives)		
* Engage the fire with tactics and strategies to provide the highest level of firefighter and public safety and where suppression actions have a high probability of success.		
* Minimize the fire effects from high severity fire and fire suppression activities where possible.		
* Utilize low intensity fire within T&E and sensitive species habitat and to minimize impacts to watersheds.		
* Maintain and enhance relationships with local land partners and neighboring communities. Provide regular incident updates to affected stakeholders.		
* Provide Initial Attack Response in area of the Temporary Flight Restriction (TFR), and assist New Mexico State Forestry with Initial Response as requested by the Cimarron District.		
*		
*		
*		
*		
6. Weather Forecast for Operational Period		
See Attached		
7. General Safety Message		
<p>Driving is one of the largest hazards on any incident. When backing use a spotter when available. Ensure rules of engagement are followed, utilizing a risk management strategy. Maintain two to one work:rest ratio.</p>		
8. Attachments (check if attached)		
Organization List (ICS 203) Assignment List (ICS 204) Communications Plan (ICS 205)	Medical Plan (ICS 206) Incident Map Traffic Plan	General Forecast Fire Behavior
9. Prepared by (Plans)	10. Approved by (IC)	
		

ORGANIZATION ASSIGNMENT LIST			9. Operations Section	
1. Incident Name			Operations	DARRELL WILLIS / AARON HULBURD
MORRIS CREEK				KEN WATKINS / TRUE BROWN (t)
2. Date		3. Time	a. Branch I - Division/Groups	
7/3/2018		1800	Branch Director	
4. Operational Period			Deputy	
From: 7/4/2018 0600 To: 7/4/2018 2000			DIVISION ALPHA	CORY CARLSON
5. Incident Commander and Staff			DIVISION KILO	JOSH CABRAL / STEVEN GRIGO (t)
Incident Commander	ALAN SINCLAIR		DIVISION PAPA	B. DAVIDSON / M. ROSENGARTAN (t)
Deputy	DAVE GESSER / MARK BERNAL (t)		DIVISION ZULU	SHELBY ERICKSON / LEVI GUFFEY (t)
Safety Officer	WILLIAM KORNRUMPH		DIVISION IA GROUP	MARIO OROZCO
Information Officer	SHARMA CHAVEZ / SANDRA LOPEZ		DIVISION CONTINGENCY	BRAD JOHNSON / CHRIS LOXTERMAN (t)
Liaison Officer	PETE SMITH		DIVISION	
Human Resources	DAVINA DIAZ		DIVISION	
6. Agency Representative			b. Branch II - Division/Groups	
Agency	Name		Branch Director	
DISTRICT FORESTER	ERNIE LOPEZ		Deputy	
FIRE MANAGEMENT OFFICER	CHRIS ROMO			
DISTRICT TIMBER MGMT OFFICER	ARNIE FRIEDT			
			c. Branch III - Division/Groups	
7. Planning Section			Branch Director	
Chief	TROY LUTRICK		Deputy	
Deputy	C. VANDRIEL / J. THORNBURG (t)			
Resource Unit	BILL KUAMOO			
Situation Unit	SONYA FEASTER			
Situation Unit	DON WEAVER (t)			
Documentation Unit	PHIL SETTLES			
Demobilization Unit	JIM COOLEY			
Training Specialist	MICHAEL WILSON			
Training Specialist	JONENA HEARST (t)			
Status Check-in	BOB SCABBY		d. Air Operations Branch	
Technical Specialists			Air Operations Branch Director	DAN SULLIVAN
ITSS	BLAKE MILLER		Air Support Supervisor	KEITH BORGHOFF
GISS	M. LEHR / S. WALTERSHEID		Air Attack Supervisor	ALANNA ENGLISH
IMET	ROBERT RICKEY		Helibase Manager	
FBAN	STEWERT TURNER		Air Tanker Coordinator	
8. Logistics Section			10. Finance Section	
Chief	SUSAN CORNETT		Chief	KEN LEAKE
Deputy	JEFF HAMMOND (t)		Deputy	MEGAN MACHT (t)
Equipment Manager			Time Unit Leader	KAREN JONES
Supply Unit	DONALD YEE		Equipment Time	GEORGIA BURNS
Facilities Unit	DANIEL COMELLA		Equipment Time	SONYA YARA
Ground Support Unit	ED MCDONALD		Equipment Time	ANNDRIE QUINTANA (t)
Communications Unit	MIKE NORMAN		Personnel Time	ANGELA SANDOVAL
Communications Unit	MARTIN JOHNSON		Cost Unit	DONNA SANDERS
Medical Unit	ALAN SCHUSTER		Prepared by	
Medical Unit	JEFF HATCH		<i>B. Kuamoo</i>	
Medical Unit	JESSE HERNANDEZ		<i>RES2</i>	
Security Unit				



Fire Weather Forecast



FORECAST NO: 1
PREDICTION FOR: Wednesday
SHIFT DATE: July 4 2018
FORECAST ISSUED: 7/3/2018 at 2000

INCIDENT: Morris Creek
UNIT: State of New Mexico Cimarron District
SIGNED: *Robert Rickey*
Incident Meteorologist (IMET)

Weather Discussion: On Wednesday, moisture and instability will combine to produce a round of scattered, afternoon showers and thunderstorms. **The primary hazard from these storms will be gusty and erratic winds, with the potential for outflow gusts between 30 to 40 mph.** Otherwise, expect warm temperatures with humidity in the teens. Another round of scattered storms is forecast on Thursday, before a surge of moisture brings numerous showers and thunderstorms to the area Thursday evening and Friday.

WEATHER FORECAST:

Today:

Weather: Partly cloudy with patchy smoke in the morning. Mostly cloudy with scattered showers and thunderstorms in the afternoon. Expect gusty and erratic winds in the vicinity of storms.

High Temperatures: 78-82

Min RH: 14-18%

20-FOOT WINDS: South-southwest 4 to 8 mph, becoming southeast 5 to 10 mph with gusts to 18 mph after 1300.

CWR (>=0.10")...30% LAL...3 Haines Index...6 (High)

Mixing Height...12000 ft AGL Transport Wind...South 5 mph

Tonight:

Weather: Mostly cloudy with scattered showers and thunderstorms in the evening. A slight chance of showers and thunderstorms overnight.

Low Temperatures: 48-52

Max RH: 80-84%

20-FOOT WINDS: Variable 2-4 mph

CWR (>=0.10")....20% LAL...2 Haines Index...3 (Very Low)

Outlook for Thursday:

Weather: Partly cloudy in the morning, becoming mostly cloudy with a chance of showers and thunderstorms in the afternoon. Showers and thunderstorms likely overnight. Expect gusty and erratic winds in the vicinity of storms.

High Temperatures: 70-74

Min RH: 34-38%

20-FOOT WINDS: Southeast 6 to 12 mph with gusts to 22 mph.

CWR (>=0.10")...40% (Afternoon), 60% (Evening/Overnight) LAL...4 Haines Index...4 (Low)

Mixing Height...11000 ft AGL Transport Wind...Southeast 10 mph

Extended Outlook for Friday:

Weather: Mostly cloudy with showers and thunderstorms likely. Expect gusty and erratic winds in the vicinity of storms.

High Temperatures: 68-72

Min RH: 38-42%

20-FOOT WINDS: Southeast 6 to 12 mph with gusts to 22 mph.

CWR (>=0.10")...60% LAL...4 Haines Index...3 (Low)

Mixing Height...7000 ft AGL Transport Wind...Southeast 10 mph

Sunrise...0547

Sunset...2021

FIRE BEHAVIOR FORECAST

FORECAST NUMBER: 1	TYPE OF FIRE: Wildland Fire
FIRE NAME: Morris Creek	OPERATIONAL PERIOD: July 4
DATE ISSUED: July 3, 2018	TIME ISSUED: 2030
UNIT: State Of New Mexico, Cimarron District	SIGNED: Typed/printed: Stewart Turner, FBAN

INPUTS

WEATHER SUMMARY: For Specifics Please see the attached Incident Weather Forecast.

WEATHER: Partly cloudy with patchy smoke in the morning.

MAX TEMP: 78 to 82° **MIN RH:** 14 to 18%

20 FOOT WINDS: South-southwest 4 to 8 mph, becoming 5 to 10 mph with gusts to 18 mph after 1300.

CHANCE OF WETTING RAIN ($\geq 0.10''$): 30% Haines Index: 6 (high). LAL 3

FUELS: The fire is burning through mixed conifer and Ponderosa Pine stands, with timber and grass fuels.

Minimum Fine Dead Fuel Moisture: 5%, 10 Hour DFM: 5-7%, 100 Hour DFM: 8%, 1000 hour DFM 7%

Cimarron RAWs: ERC – 75

OUTPUTS

FIRE BEHAVIOR

GENERAL:

Smoldering to active fire behavior will be found around the fire. Gusty winds and the Haines of 6 can accelerate the fire behavior and growth. The general winds favor northeast growth but outflow winds could come from any direction. The potential for active fire behavior still exists outside the fire perimeter. Dry fuels, high Haines, and high temperatures all align and prime the fuels for active fire behavior outside the fire perimeter. Probability of Ignition: 63% during the heat of the day with 60% cloud cover.

SPECIFIC:

Division A: Smoldering fire behavior is expected.

Division P: Fire will continue to drop off the canyon with rollout and spotting. Expect to see short uphill runs as fire positions itself on the lower slopes.

Division K: Eastward movement is expected during the morning hours with the prevailing southwest winds.

Divisions Z: Afternoon winds will be averse to this Division testing any lines.

Initial Attack: Expect to see active fire behavior with gusty outflow winds. Proper size up is important to estimate potential and fire behavior.

AIR OPERATIONS:

Thunderstorms and outflow wind may hinder air operations.

SAFETY

Gusty winds around thunderstorms may cause erratic fire behavior. Aircraft may not be able to work because of thunderstorm activity. Don't count on aircraft being able to fly to help you out of a bad spot.

AIR OPERATIONS SUMMARY

Prepared by: Keith Borghoff ASGS

PREPARED DATE/TIME: 7-3-18

1. INCIDENT NAME: Morris Creek Fire

2. OPERATIONAL PERIOD DATE: Wednesday 7-4-18

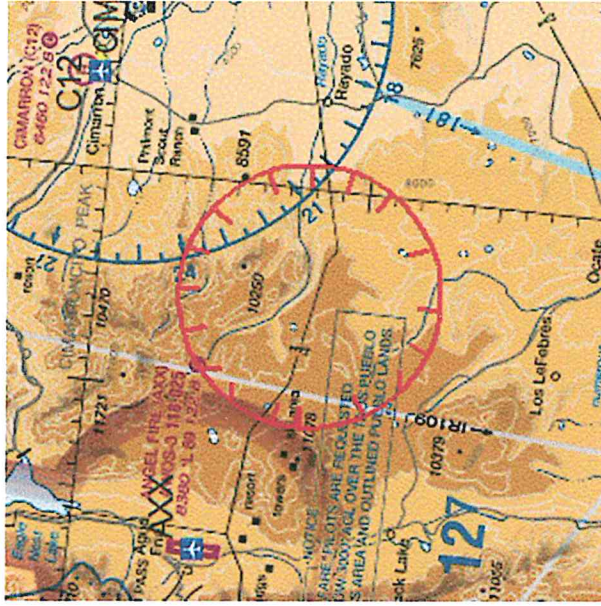
START TIME: 0600 END TIME: 2030 SUNRISE: 0548 SUNSETS: 2022

3. REMARKS (Safety Notes, Hazards, Air Operations Special Equipment, etc.):

- Advise Helicopters/Helibase/Air Attack immediately of any unidentified aircraft/Drones within the fire area/TFR
- Keep track of gallons taken per dip site

4. READY ALERT AIRCRAFT:		5. TFR #8/5611 5-NM 13,000 msl	8. FIXED WING	# Avail / Type / Make-Model / FAA N# / Base(s)
Medivac - refer to medical plan. Taos Careflight or Lobo 55		(A-9)	ATGS Aircraft	1GB - English 5AM- TBD
6. PERSONNEL	Phone			
AOBD: Dan Sullivan	928-925-2439			
ASGS- Keith Borghoff	928-713-1306			
ATGS: Alanna English	928-699-0935			
ATGS: On order				
Dispatch Aircraft Desk (Taos)	575-758-6208			

7. FREQUENCIES		AM	FM
Air / Air (TFR) Primary		123.8250 (A-7)	
Air/Air Secondary		118.9750 (A-20)	
A/G -1		169.2000 (A-8)	
A/G -2		167.9875 (A-21)	
Deck			N/A
Air-Medical Helicopters		VMED 28	155.3400 TX Tone 156.7
Air Guard			168.625 TX/RX Tone 110.9



TFR MAP

A/C orders DIVS to Ops, or through Air Attack if up.

9. Helicopters (Use Additional Sheets as Necessary)

FAA N#	TY	MAKE/MODEL	BASE	AVAIL	START	REMARKS
1KA (A-2)	1	K-Max	Angel Fire			Matt Muller (209) 605-7823
3FH (A-12)	1	S-70 FireHawk	Angel Fire			Morgan Meserth (208) 861-2346

MISC. INFORMATION

Taos Helibase-Drew Knee (760) 518-3537

Approved By: Keith Borghoff, ASGS

SAFETY MESSAGE

Happy 4th of July!

INCIDENT NAME: Morris Creek	DAY OPERATIONAL PERIOD: 07/04/2018
------------------------------------	---

MAJOR HAZARDS:

<ul style="list-style-type: none">• INCIDENT TRANSITION• SNAGS/HAZARD TREES• DRIVING• COMMUNICATIONS	<ul style="list-style-type: none">• STRUCTURE PREP• FIRING OPERATIONS• HELICOPTER OPERATIONS• ATV/UTV UTILIZATION
---	--

NARRATIVE:

ADAPTABILITY AND FLEXIBILITY:

The 2018 fire season is really starting to ramp up and getting back into the mindset to fight fire again after a long winter can sometimes be difficult. Annual trainings and readiness reviews can only do so much to bring us back into a safety oriented mindset. Often, our awareness of safety increases over the course of the season but it is critical to spend some time as we start to facilitate this mental shift. Adding an incident transition to the mix just increases that mental processes, which has associated hazards.

Increasing personal adaptability and flexibility increases our margin of error and can lead to a safer environment. Below are some things to consider both at work and in our personal lives.

- Alter plans to meets situation demands
- Alter behavior to meet situational demands
- Accept constructive criticism and help others
- Step in and help other crew/module/team members
- Be receptive to other's ideas
- Advocate a specific course of action
- State opinions on decisions/procedures even to higher ranking crew members
- Ask questions when uncertain
- Make suggestions
- Raise questions about procedures

SAFETY OFFICERS:	Bill Kornrumpf, Eugene Pino
-------------------------	------------------------------------

Incident Radio Communications Plan (ICS 205) Day Operations				
Incident Name: Morris Creek Fire				Operational Period: 7/4/2018
Channel	Function	Frequency	Narrowband	Assignment & Remarks
1	TAC 1	RX&TX168.0500 rx&tx tone: 136.5	Narrow	Div A
2	TAC 2	RX&TX168.2000 rx&tx tone: 136.5	Narrow	Div K
3	TAC 3	RX&TX168.6000 rx&tx tone: 136.5	Narrow	Div P
4	TAC 4	RX&TX166.7250 rx&tx tone: 136.5	Narrow	Div Z
5	TAC 5	RX&TX166.7750 rx&tx tone: 141.3	Narrow	I/A
6	TAC 6	RX&TX168.2500 rx&tx tone 136.5	Narrow	Contingency
7	CMD 7	RX:170.000 TX:166.6750 tx tone: 136.5	Narrow	Command on Rayado Mesa
8	CMD 8	RX:169.5375 TX:164.7125 tx tone: 136.5	Narrow	Command on Angel Fire
9	NMSF FIRE	RX&TX159.4200 tx tone: 156.7	Narrow	
10	R3 TAC 1	RX&TX167.550	Narrow	
11	NMSF TAC	RX&TX159.2250	Narrow	
12	ST FIRE	RX&TX 154.3100	Narrow	
13	VMED28	RX &TX155.3400 tx tone 156.7	Narrow	Medical Emegancy
14	A/G PRI	RX&TX169.2000	Narrow	Primary Air to Ground
15	A/G SEC	RX&TX167.9875	Narrow	Secondary Air to Ground
16	Air Guard	RX&TX168.625 tx tone: 110.9	Narrow	Emergency Use only

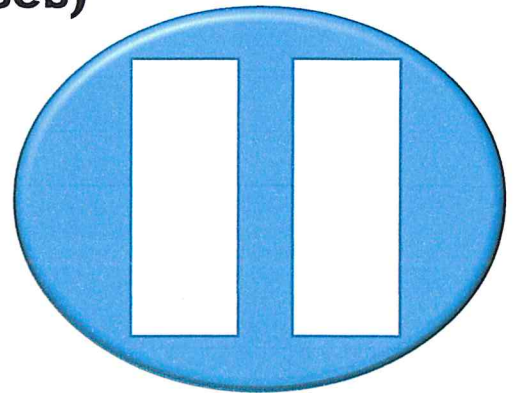
Prepared by: Martin Johns COML *Martin Johns*

Note: CMD 7 and CMD 8 are linked. If one doesn't work, try the other.

PAUSE BEFORE POSTING

Consider agency guidelines and potential ramifications before posting pictures of:

- fireline personnel not wearing full PPE**
- identifiable structures (ie. addresses)**
- burning / burned structures**
- inmate crews**
- faces of children**
- accident or investigation scenes**
- sensitive natural or cultural resources (or QR codes to maps that identify them)**
- whiteboards / flipcharts with passwords or internal contacts listed**
- license plates**





Human Resource Message

Southwest Area Team #3 has a “Zero Tolerance” policy for harassment and discrimination of any type. We expect every individual assigned to the Morris Creek fire to conduct themselves with *Professional* and *Respectful* behavior towards each other and the public that we serve. Our team has an open-door policy and welcome your thoughts.

A handwritten signature in black ink, appearing to read "Alan Sinclair", written over a horizontal line.

Alan Sinclair, Incident Commander (IC)

“The single biggest problem in communication is the illusion that it has taken place” - George Bernard Shaw

Prepared by: Davina Diaz, HRSP, located down hall to the left of the turquoise garden box.

Training

If you have been assigned as a trainee to the incident please come in and check in with the Training Specialist. You and your trainer should accomplish this within your second Operational Period, to document your training for:

- Your records
- The Home Unit
- The Incident

The Training Specialist will document your training and provide you your with a formal Training package for all three units.

Jonena Hearst

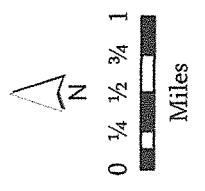
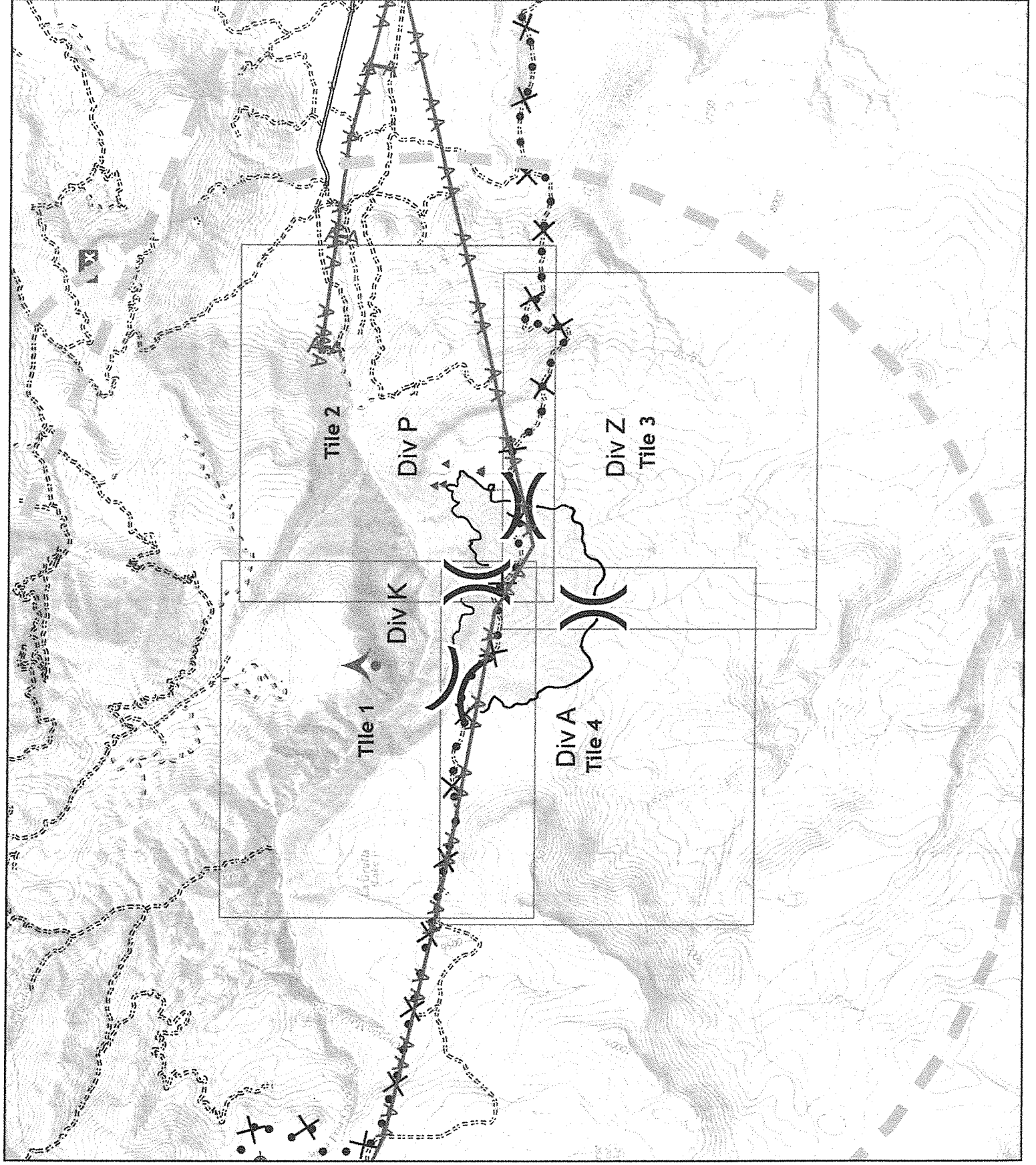
Training Specialist (t)

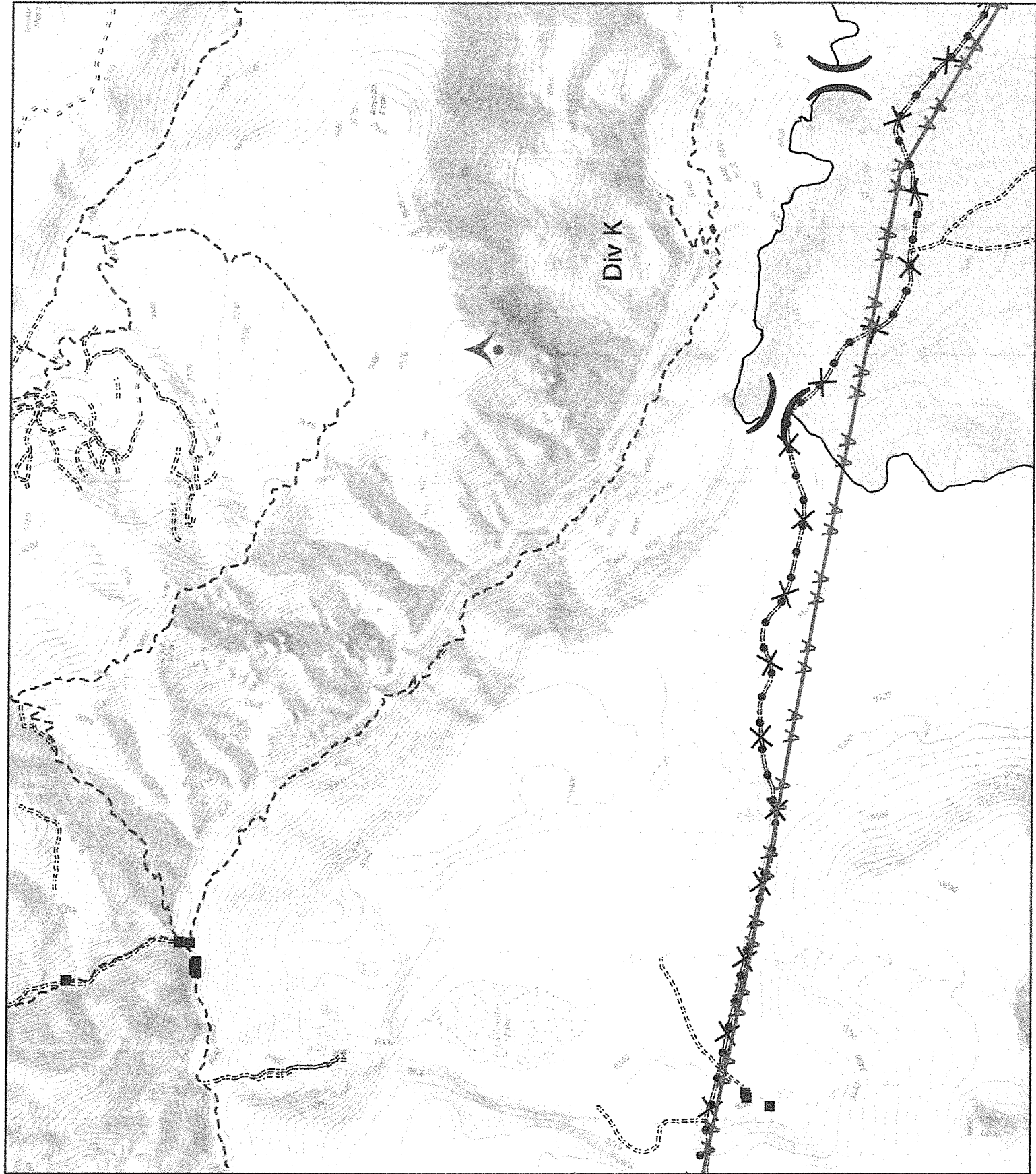
Southwest Incident
Management Team #3



IAP Map
Morris Creek Fire
 1,515 Acres
 NM-NZS-000489
 July 4, 2018

- Aerial Hazard
- Dip Site
- IR Isolated Heat Source
- Mobile Weather Unit
- Division Break
- Proposed Dozer Line
- Aerial Hazard
- Roads & Trails**
- Improved
- Four Wheel Drive
- Emergency
- Out of Service





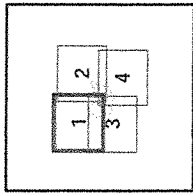
IAP Map
Morris Creek Fire

1,515 Acres

NM-N2S-000489

July 4, 2018

Page 1 of 4



- Aerial Hazard
- Division Break
- Proposed Dozer Line
- Aerial Hazard
- Structures
- Roads & Trails**
- Four Wheel Drive
- Emergency
- Out of Service



NAD 1983 UTM Zone 13N



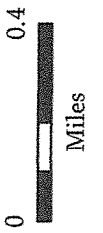
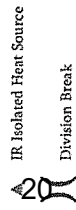
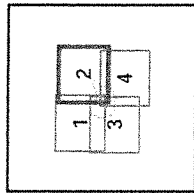
IAP Map
Morris Creek Fire

1,515 Acres

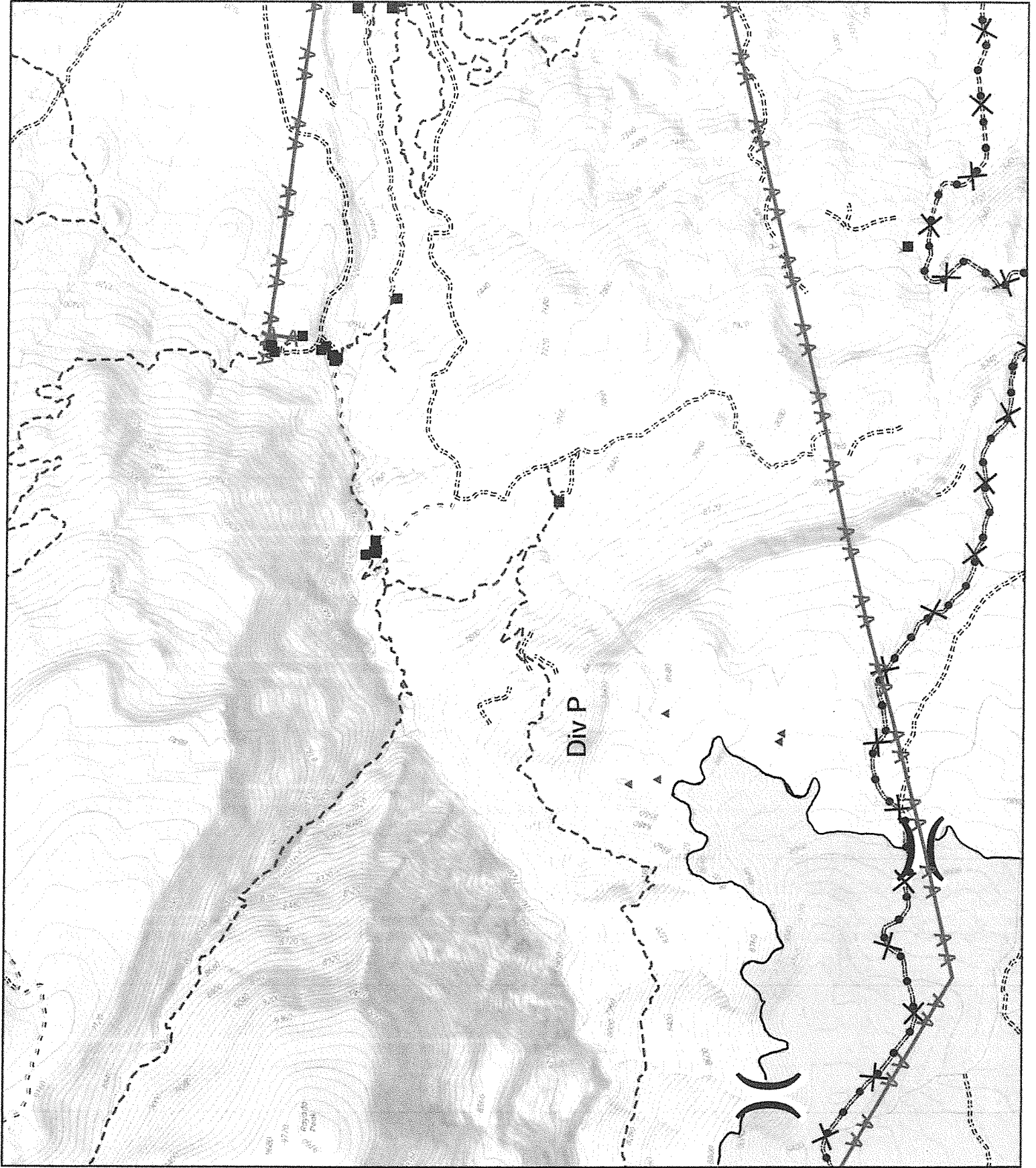
NM-N2S-000489

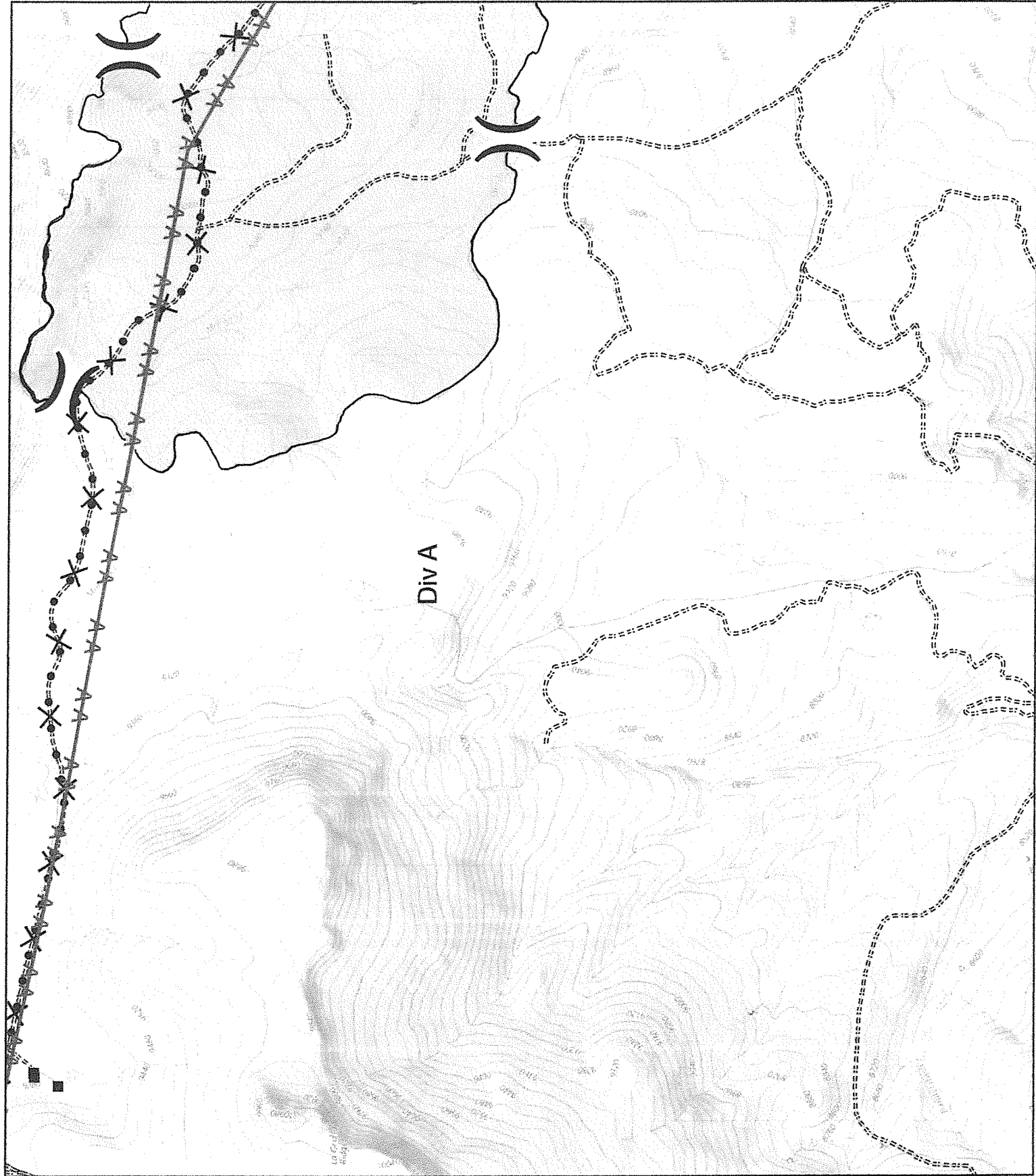
July 4, 2018

Page 2 of 4



NAD 1983 UTM Zone 13N





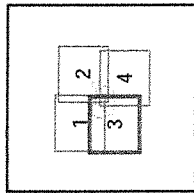
IAP Map
Morris Creek Fire

1,515 Acres

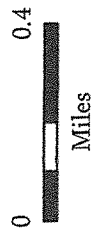
NM-N2S-000489

July 4, 2018

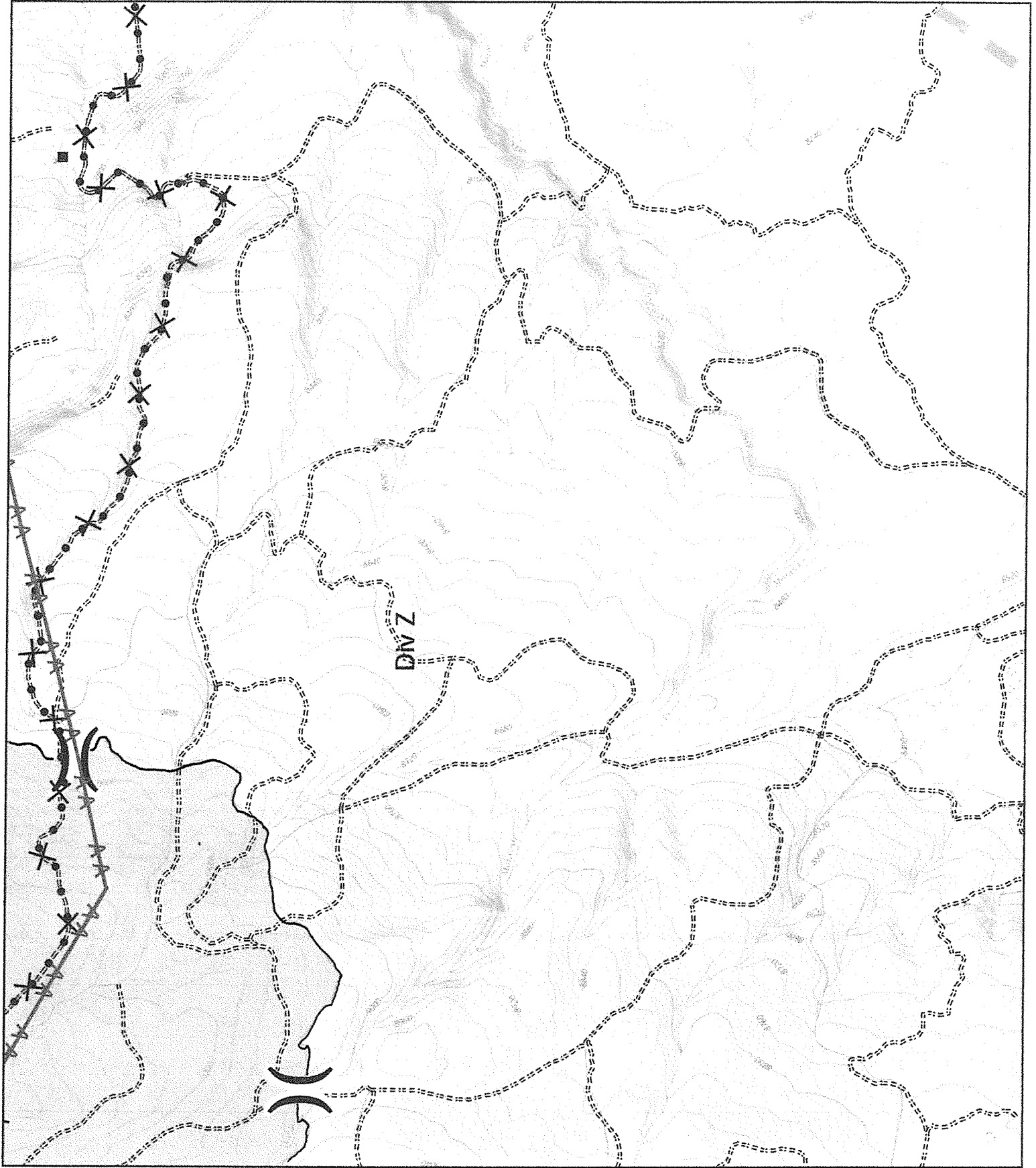
Page 3 of 4



- Division Break
- Proposed Dozer Line
- Aerial Hazard
- Structures
- Roads & Trails
- Emergency

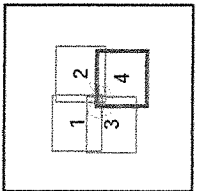


NAD 1983 UTM Zone 13N

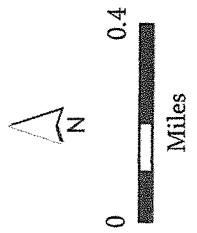


IAP Map
Morris Creek Fire
 1,515 Acres
 NM-NZS-000489
 July 4, 2018

Page 4 of 4



- Division Break
- Proposed Dozer Line
- Aerial Hazard
- Structures
- Roads & Trails
- Emergency



NAD 1983 UTM Zone 13N

**INCIDENT
LINE SUPPLY ORDER FORM
(OSC/Division Supervisors Only)**

Date & Time Order Was Placed	Order Reference # (DIV + #)		Location for Delivery (Division/LZ/DP/Lat. Long)
DATE:		GROUND SUPPORT	
TIME:		HELICOPTER	
		TO BE PICKED UP BY @	

DATE NEEDED:	TIME NEEDED:
Order received in COMMUNICATIONS by: Name:	Time:
Order received in SUPPLY by: Name:	Time:
Order received in GROUND SUPPORT by: Name:	Time:
Order received in HELIBASE by: Name:	Time:
Order delivered/shipped to final location by: Name:	Time:

#	ITEM	QUANTITY	SHIPPED	PENDING	#	ITEM	QUANTITY	SHIPPED	PENDING
1.	Breakfast – Meals				31.	Lightweight Pump Kit			
2.	Lunch – Meals				32.	Hose – 1 ½” ft.			
3.	Dinner – Meals				33.	Hose – 1” ft.			
4.	MRE’s (# of Cases) 12/cs				34.	Hose – ¾” ft.			
5.	Cubies of Water – ea.				35.	Reducer – 1 ½” x 1”			
6.	Bottled Water - Case				36.	Reducer – 1” x ¾”			
7.	Gatorade – Case				37.	Gated “Y” – 1 ½” ea.			
8.	Batteries – AA/box 24 ea.				38.	Gated “Y” – 1” ea.			
9.	Batteries – AAA/C/D ea.				39.	Shut off valve ¾” ea.			
10.	Fuel – Unleaded – Gallons				40.	In – Line Tee 1 ½” x 1” ea.			
11.	Fuel – Diesel – Gallons				41.	Nozzle – 1 ½” ea.			
12.	Fuel – Drip Torch (60/40 mix) gals.				42.	Nozzle – 1” ea.			
13.	Bar Oil – QT’s/Gallons				43.	Nozzle ¾”			
14.	2 cycle oil – (1 per gallon)				44.	First Aid Kit – 20 man ea.			
15.	Sleeping Bags – 25 degree				45.	Chainsaw Kit – ea.			
16.	Sleeping Bags – 40 degree				46.	DIV Pump Kit (next page) ea.			
17.	Plastic – roll/sq. ft.				47.	DIV Hose lay Kit (next page) ea.			
18.	Parachute Cord – roll/ft.				48.	Line Spike Hygiene Kit (next page) ea.			
19.	Shovels – ea.								
20.	Pulaski – ea.					MISC. Please list below			
21.	Combi – ea.								
22.	McLeod – ea.								
23.	Fussee – case								
24.	Drip Torch – Full/Empty								
25.	Backpack Pump – Full/Empty								
26.	Slingable Blivet – Suppression								
27.	Slingable Blivet – Drinking					Accountable Property #’s			
28.	Folding Tank 1000/1500 gals								
29.	Pumpkin 1500/3000/6000 gals								
30.	Mark III Pump Kit								

Team Ordering/ Timeline Process:

0600 – Morning Briefing, start of crew time.

1500 – DIVS to have next days resource order ready for OPS.

- **Original food orders must be placed 6-hours, plus drive time, prior to actual feeding time.**
- **Last call to change food orders is 4-hours, plus drive time.**
- **All crew level orders will be placed through DIVS.**
- **DIVS will place all orders through Communications Unit.**
- **All orders will be tracked using the process found on the front of form.**

Division Pump Kit			Division Hose Lay Kit		
Item	NFES#	Quantity	Item	NFES#	Quantity
Hose 1½"	1239	1000'	Hose 1½"	1239	3500'
Hose 1"	1238	1000'	Hose 1"	1238	1700'
Hose, ¾"	1016	500'	Hose, ¾"	1016	3000'
Tee, 1 ½" – 1"	731	4	Tee, 1 ½" – 1"	731	15
Nozzle, 1"	138	4	Nozzle, 1"	138	15
Nozzle, ¾"	136	4	Nozzle, ¾"	136	30
1 ½" Gated "Y"	231	4	Valve, 1 ½" Gated "Y"	231	5
1" Gated "Y"	2059	4	Valve, 1" Gated "Y"	2059	2
¾" Gated "Y"	272	4	Valve ¾" Gated "Y"	272	30
Reducers, 1 ½" – 1"	0010	4	Shut off valve ¾"	738	20
Reducers, 1" – ¾"	733	4	Reducers, 1 ½" – 1"	0010	10
Double Female 1"	710	1	Reducers, 1" – ¾"	733	10
Double Female 1 ½"	857	1	Double Female 1"	710	1
Fuel 5 Gal. To Match Pump	606	2	Double Female 1 ½"	857	1
2 Cycle Oil	341	2	Bag, Slingable Water	437	6
Pick One of the Pumps Below					
Pump, Lightweight	670	1			
Pump Mark III	870	1			
Line Spike Hygiene Kit			Line Spike Hygiene Kit (continued)		
Trauma shears		1 ea	Latex or Nitrile gloves		1 box
Moleskin		3 ft	Benadryl		1 box
Gold Bond Blue Powder		5 ea	Spenco 2nd skin		3 boxes
Gold Bond Green Powder		2 ea	Ibuprofen (Advil)		25 ea
Gold Bond Yellow Powder		5 ea	Aminofen (Tylenol)		25 ea
Tolfanate Foot Powder		3 ea	Antiseptic Wipes		20 ea
Vet Wrap (Koflex)		6 ea	Sting Relief		20 ea
Throat Lozenges		40 ea	Baby Wipes		1 box
Hand Sanitizer		20 ea	Bactracin		10 ea
Bug Repellent		3 ea	Chap Stick		10 ea
Sun Screen		5 ea	Ziplock Bags		10 ea
Eye Wash		5 ea			

MEDICAL PLAN (ICS 206 WF)

Controlled Unclassified Information//Basic

1. Incident/Project Name		2. Operational Period						
Morris Creek Fire		0600-2000		7/4/18				
3. Ambulance Services								
Name	Complete Address	Phone & EMS Frequency	Advanced Life Support (ALS) Yes No					
Cimarron EMS	133 N Jefferson Ave, Cimarron NM, 87714	Raton Dispatch 575-445-2704 or 911	ALS	BLS				
Raton EMS	127 Clark Ave Raton, NM 87740	Raton Dispatch 575-445-2704 or 911		BLS				
Angel Fire EMS	11 N Angel Fire Rd, Angel Fire, NM 87710	Red River dispatch 575-754-2333 or 911	ALS	BLS				
4. Air Ambulance Services								
Name	Phone	Type of Aircraft & Capability						
Lifeguard Air Emergency	Raton Dispatch 575-445-2704 or 911 or 505-272-3115	Life Guard #1 @ Sunport, ~1 hr ETA to ICP, 24/7 VMED28						
Tristate Care flight	Raton Dispatch 575-445-2704 or 911 or 800-800-0900	Care flight 16 is an Astar 350 @ Taos Airport, ~45min+ to ICP Dependent on availability, 24/7, VMED28						
Classic Lifeguard	Raton Dispatch 575-445-2704 or 911 or 800-444-9223	Classic 1 is a bell 407 @ Los Alamos, ~75min+ to ICP Dependent on availability, 24/7, VMED28						
LOBO 55 New Mexico National Guard	Taos Interagency dispatch 575-758-6208	24/7, Hoist, ALS, VMED28						
5. Hospitals								
Name Complete Address	GPS Datum – WGS 84 Coordinate Standard Degrees Decimal Minutes DD° MM.MMM' N - Lat DD° MM.MMM' W - Long		Approximate Travel Time From ICP		Phone	Helipad Yes No		Level of Care Facility
	Lat:	Long:	Air	Gnd		Yes	No	
Holy Cross Hospital 1397 Weimer Rd, Taos NM, 87571	Lat: N 36 22.070	W 105 34.63	25 min	90 min	575-758-8883 ER:575-751-5835	X		Critical Access (no ortho)
	Long:							
	VHF:							
Miners Colfax Medical Center 203 Hospital Dr, Raton, NM	Lat: N 35 51.73	W 104 26.55	25 min	60 min	575-445-7700 ER:575-445-7703	X		Level 3 Trauma Center
	Long:							
	VHF:							
University of New Mexico 2211 Lomas Blvd NE Albuquerque NM 87106	Lat: N 35 05.277	W 106 37.124	1+ hr	3+ hrs	505-272-2411 Dr:888-866-7257	X		Level 1 Trauma Center Limited Burn Center Medical helicopters only
	Long:							
	VHF:							
Philmont Medical Clinic 10 Conejo Rd, Cimarron, NM	Lat: N 36 27.269	W 104 57.409	10 min	10 min	575-376-1149		X	Critical Access
	Long:							
	VHF:							
Alta Vista Regional Hospital 104 Legion Dr, Las Vegas, NM 87701	Lat: N 35 37.417	W 105 12.642	30 min	1.5 hrs	505-426-3500 ER:505-426-3502	X		Acute Care Hospital
	Long:							
	VHF:							
Christus St Vincent Regional Medical Center 455 St Michaels Dr, Santa Fe NM 87505	Lat: N 35 39.607	W 105 56.792	1 hr	2.5 hrs	505-913-3361	X		Level 3 Trauma Center
	Long:							
	VHF:							
University of Colorado Hospital/Burn Center 12605 E 16 th Ave Aurora Co 80045	Lat: N 39 44.530	W 104 50.545	2.5+hrs	5+ hrs	720-848-7583 Dr: 844-285-4555	X		Level 1 Trauma Center Burn Center
	Long:							
	VHF:							

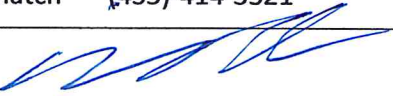

MEDICAL PLAN (ICS 206 WF)

Controlled Unclassified Information//Basic

6. Division Branch Group	Area Location Capability	
DIV ALPHA	EMS Responders & Capability:	Use Engine 3572 Personnel
	Equipment Available on Scene:	UNK Kit
	Medical Emergency Channel:	Command &/or VMED 28
	ETA for Ambulance to Scene:	All Times Approximate
	Air:	UNK
	Ground:	20 min
	Approved Helispot:	None
	Lat:	
Long:		
DIV KILO	EMS Responders & Capability:	AMBO 1 assigned to Div Z
	Equipment Available on Scene:	ALS
	Medical Emergency Channel:	Command &/or VMED 28
	ETA for Ambulance to Scene:	All Times Approximate
	Air:	UNK
	Ground:	20+ min
	Approved Helispot:	None
	Lat:	
Long:		
DIV PAPA	EMS Responders & Capability:	AMBO 1 assigned to Div Z
	Equipment Available on Scene:	ALS
	Medical Emergency Channel:	Command &/or VMED 28
	ETA for Ambulance to Scene:	All Times Approximate
	Air:	UNK
	Ground:	20+ min
	Approved Helispot:	None
	Lat:	
Long:		
DIV ZULU	EMS Responders & Capability:	AMBO 1-(Campos EMTF/Apodaca EMPF)
	Equipment Available on Scene:	ALS Ambulance
	Medical Emergency Channel:	Command &/or VMED 28
	ETA for Ambulance to Scene:	All Times Approximate
	Air:	UNK
	Ground:	20 min
	Approved Helispot:	None
	Lat:	
Long:		
IA GROUP	EMS Responders & Capability:	None/911
	Equipment Available on Scene:	None
	Medical Emergency Channel:	Command &/or VMED 28
	ETA for Ambulance to Scene:	All Times Approximate
	Air:	UNK
	Ground:	UNK
	Approved Helispot:	None
	Lat:	
Long:		

MEDICAL PLAN (ICS 206 WF)

Controlled Unclassified Information//Basic

Contingency	EMS Responders & Capability:		None/911	
	Equipment Available on Scene:		None	
	Medical Emergency Channel:		Command &/or VMED 28	
	ETA for Ambulance to Scene:		All Times Approximate	
	Air:		UNK	
	Ground:		UNK	
	Approved Helispot:		None	
	Lat:			
	Long:			
7. Name & Location		Remote Camp Location(s)		
BASE CAMP	Point of Contact:		Jesse Hernandez MEDL (520)-560-2742	
	EMS Responders & Capability:		AMBO 1	
	Equipment Available on Scene:		500 man kit	
	Medical Emergency Channel:		Command &/or VMED 28	
	ETA for Ambulance to Scene:		All Times Approximate	
	Air:		UNK	
	Ground:		30 min day/10 min night	
	Approved Helispot:		None	
	Lat:			
Long:				
ICP	Point of Contact:		Alan Schuster MEDL (928-533-6231)	
	EMS Responders & Capability:		911	
	Equipment Available on Scene:		100 man Kit	
	Medical Emergency Channel:		Command &/or VMED 28	
	ETA for Ambulance to Scene:		All Times Approximate	
	Air:		30min Dependent on availability	
	Ground:		10min Dependent on availability	
	Approved Helispot:		Wayne Baker Heliport	
	Lat:		N 36 30.761	
Long:		W 104 55.484		
8. Prepared By (Medical Unit Leader)		9. Date/Time	10. Reviewed By (Safety Officer)	11. Date/Time
Alan Schuster (928)-533-6231 Jeff Hatch (435)-414-3521 		7-3-18/2100	Bill Kornrumpf 	7-3-18/2100

MEDICAL PLAN (ICS 206 WF)

Medical Incident Report

FOR ALL MEDICAL EMERGENCIES: IDENTIFY ON SCENE INCIDENT COMMANDER BY NAME AND POSITION AND ANNOUNCE "MEDICAL EMERGENCY" TO INITIATE RESPONSE FROM IMT COMMUNICATIONS/DISPATCH.

Use items one through nine to communicate situation to communications/dispatch.

1. CONTACT COMMUNICATIONS/DISPATCH

Ex: "Communications, Div. Alpha. Stand-by for Priority Medical Incident Report." (If life threatening request designated frequency be cleared for emergency traffic.)

2. INCIDENT STATUS: Provide incident summary and command structure.

Nature of Injury/Illness		Describe the injury (Ex: Broken leg with bleeding)
Incident Name		Geographic Name + "Medical" (Ex: Trout Meadow Medical)
Incident Commander		Name of IC
Patient Care		Name of Care Provider (Ex: EMT Smith)

3. INITIAL PATIENT ASSESSMENT: Complete this section for each patient. This is only a brief, initial assessment. Provide additional patient info after completing this 9 Line Report.

Number of Patients:	Male / Female	Age:	Weight:
Conscious? <input type="checkbox"/> YES <input type="checkbox"/> NO = MEDEVAC!			
Breathing? <input type="checkbox"/> YES <input type="checkbox"/> NO = MEDEVAC!			
Mechanism of Injury: <i>What caused the injury?</i>			
Lat/Long (Datum WGS84) Ex: N 40° 42.45' x W 123° 03.24'			

4. SEVERITY OF EMERGENCY, TRANSPORT PRIORITY

SEVERITY	TRANSPORT PRIORITY
<input type="checkbox"/> URGENT-RED Life threatening injury or illness. <i>Ex: Unconscious, difficulty breathing, bleeding severely, 2° - 3° burns more than 4 palm sizes, heat stroke, disoriented.</i>	Ambulance or MEDEVAC helicopter. Evacuation need is IMMEDIATE.
<input type="checkbox"/> PRIORITY-YELLOW Serious Injury or illness. <i>Ex: Significant trauma, not able to walk, 2° - 3° burns not more than 1-2 palm sizes.</i>	Ambulance or consider air transport if at remote location. Evacuation may be DELAYED.
<input type="checkbox"/> ROUTINE-GREEN Not a life threatening injury or illness. <i>Ex: Sprains, strains, minor heat-related illness.</i>	Non-Emergency. Evacuation considered Routine of Convenience.

5. TRANSPORT PLAN:

Air Transport: (Agency Aircraft Preferred)

<input type="checkbox"/> Helispot	<input type="checkbox"/> Short-haul/Hoist	<input type="checkbox"/> Life Flight	<input type="checkbox"/> Other
-----------------------------------	---	--------------------------------------	--------------------------------

Ground Transport:

<input type="checkbox"/> Self-Extract	<input type="checkbox"/> Carry-Out	<input type="checkbox"/> Ambulance	<input type="checkbox"/> Other
---------------------------------------	------------------------------------	------------------------------------	--------------------------------

6. ADDITIONAL RESOURCE/EQUIPMENT NEEDS:

<input type="checkbox"/> Paramedic/EMT(s)	<input type="checkbox"/> Crew(s)	<input type="checkbox"/> SKED/Backboard/C-Collar
<input type="checkbox"/> Burn Sheet(s)	<input type="checkbox"/> Oxygen	<input type="checkbox"/> Trauma Bag
<input type="checkbox"/> Medication(s)	<input type="checkbox"/> IV/Fluid(s)	<input type="checkbox"/> Cardiac Monitor/AED
<input type="checkbox"/> Other (i.e. splints, rope rescue, wheeled litter)		

7. COMMUNICATIONS:

Function	Channel Name/Number	Receive (Rx)	Tone/NAC *	Transmit (Tx)	Tone/NAC *
<i>Ex: Command</i>	<i>Forest Rpt, Ch. 2</i>	<i>168.3250</i>	<i>110.9</i>	<i>171.4325</i>	<i>110.9</i>
COMMAND					
AIR-TO-GRND					
TACTICAL					

*(NAC for digital radio system)

8. EVACUATION LOCATION:

Lat/Long (Datum WGS84) <i>EX: N 40 42.45' x W 123 03.24'</i>	
Patient's ETA to Evacuation Location:	
Helispot/Extraction Size and Hazards:	

9. CONTINGENCY:

Considerations: <i>If primary options fail, what actions can be implemented in conjunction with primary evacuation method? Be thinking ahead...</i>	REMEMBER: Confirm ETA's of resources ordered Act according to your level of training Be Alert. Keep Calm. Think Clearly. Act Decisively.
--	--