

# MORRIS CREEK

NM-N2S-000489

## Incident Action Plan

**SOUTHWEST AREA**



**Financial Codes  
PNLXN1 (1502) [P]**

**GPS Points can be collected in either WGS84 OR NAD83**

**Morris Creek Fire Information: (575) 383 4597 8am to 9pm**

**7/6/2018 thru 7/6/2018  
0600 to 2000**






## **VALUES AT RISK**

- **Emergency Responders and the Public**
- **CS Ranch and associated infrastructure**
- **UU Bar Ranch and associated infrastructure**
- **Philmont Scout Ranch and associated infrastructure**
- **State Trust Lands**
- **Watersheds**
- **Grazing Lands**
- **Local Infrastructure, Utilities and Power Lines**

### Incident Objectives List (ICS 202)

1. Incident Name	2. Date Prepared	3. Time Prepared
MORRIS CREEK	7/5/2018	1800
4. Operational Period (Date and Time)		
From: 7/6/2018 at: 0600	From: 7/6/2018	at: 2000
5. General Control Objectives for the Incident (include Alternatives)		
* Engage the fire with tactics and strategies to provide the highest level of firefighter and public safety and where suppression actions have a high probability of success.		
* Minimize the fire effects from high severity fire and fire suppression activities where possible.		
* Utilize low intensity fire within T&E and sensitive species habitat and to minimize impacts to watersheds.		
* Maintain and enhance relationships with local land partners and neighboring communities. Provide regular incident updates to affected stakeholders.		
* Provide Initial Attack Response in area of the Temporary Flight Restriction (TFR), and assist New Mexico State Forestry with Initial Response as requested by the Cimarron District.		
*		
*		
*		
*		
6. Weather Forecast for Operational Period		
See Attached		
7. General Safety Message		
<p>Driving is one of the largest hazards on any incident. When backing use a spotter when available.                      Ensure rules of engagement are followed, utilizing a risk management strategy.                      Maintain two to one work:rest ratio.</p>		
8. Attachments (check if attached)		
Organization List (ICS 203) Assignment List (ICS 204) Communications Plan (ICS 205)	Medical Plan (ICS 206) Incident Map Traffic Plan	General Forecast Fire Behavior
9. Prepared by (Plans) <i>Gene Munton SCK, NJ (4)</i> <i>B. KURAMO's REEL</i>	10. Approved by (IC) 	

ORGANIZATION ASSIGNMENT LIST		9. Operations Section	
1. Incident Name		Operations	DARRELL WILLIS / AARON HULBURD
MORRIS CREEK			KEN WATKINS / TRUE BROWN (t)
2. Date	3. Time	a. Branch I - Division/Groups	
7/5/2018	1800	Branch Director	
4. Operational Period		Deputy	
From: 7/6/2018 0600	To: 7/6/2018 2000	DIVISION ALPHA	CORY CARLSON / KEITH BORGHOFF (t)
5. Incident Commander and Staff		DIVISION KILO	JOSH CABRAL / STEVEN GRIEGO (t)
Incident Commander	ALAN SINCLAIR	DIVISION PAPA	B. DAVIDSON / M. ROSENGARTAN (t)
Deputy	DAVE GESSER / MARK BERNAL (t)	DIVISION ZULU	SHELBY ERICKSON / LEVI GUFFEY (t)
Safety Officer	BILL KORNRUMPH / C. REMINGTON (t)	DIVISION IA GROUP	MARIO OROZCO
Information Officer	SHARMA CHAVEZ / SANDRA LOPEZ	DIVISION CONTINGENCY	BRAD JOHNSON
Liaison Officer	PETE SMITH	DIVISION	
Human Resources	DAVINA DIAZ	DIVISION	
6. Agency Representative		b. Branch II - Division/Groups	
Agency	Name	Branch Director	
DISTRICT FORESTER	ERNIE LOPEZ	Deputy	
FIRE MANAGEMENT OFFICER	CHRIS ROMO		
DISTRICT TIMBER MGMT OFFICER	ARNIE FRIEDT		
		c. Branch III - Division/Groups	
7. Planning Section		Branch Director	
Chief	TROY LUTRICK	Deputy	
Deputy	C. VANDRIEL / J. THORNBURG (t)		
Resource Unit	BILL KUAMOO		
Situation Unit	SONYA FEASTER		
Situation Unit	DON WEAVER (t)		
Documentation Unit	PHIL SETTLES		
Demobilization Unit	JIM COOLEY		
Training Specialist	MICHAEL WILSON		
Training Specialist	JONENA HEARST (t)	d. Air Operations Branch	
Status Check-in	BOB SCABBY	Air Operations Branch Director	DAN SULLIVAN
Status Check-in	J. MONTOYA (t) / V. TYLER (t)	Air Support Supervisor	
ITSS	BLAKE MILLER	Air Attack Supervisor	ALANNA ENGLISH
GISS	M. LEHR / S. WALTERSHEID	Helibase Manager	
IMET	ROBERT RICKEY	Air Tanker Coordinator	
FBAN	STEWERT TURNER	10. Finance Section	
8. Logistics Section		Chief	KEN LEAKE
Chief	SUSAN CORNETT	Deputy	MEGAN MACHT (t)
Deputy	JEFF HAMMOND (t)	Time Unit Leader	KAREN JONES
Ordering Manager	TERRI BERGER	Equipment Time	GEORGIA BURNS
Supply Unit	DONALD YEE	Equipment Time	SONYA YARA
Facilities Unit	DANIEL COMELLA	Equipment Time	ANNDRIE QUINTANA (t)
Ground Support Unit	ED MCDONALD	Personnel Time	ANGELA SANDOVAL
Communications Unit	MIKE NORMAN	Cost Unit	DONNA SANDERS
Communications Unit	MARTIN JOHNSON / MARK SPANN		
Medical Unit	ALAN SCHUSTER	Prepared by	Jesse Montoya SCKN(4)
Medical Unit	JEFF HATCH		
Medical Unit	JESSE HERNANDEZ		
Security Unit			



## Fire Weather Forecast



**FORECAST NO:** 3  
**PREDICTION FOR:** Friday  
**SHIFT DATE:** July 6 2018  
**FORECAST ISSUED:** 7/5/2018 at 2000

**INCIDENT:** Morris Creek  
**UNIT:** State of New Mexico Cimarron District  
**SIGNED:** *Robert Rickey*  
**Incident Meteorologist (IMET)**

**Weather Discussion:** For today, chances for showers and thunderstorms continue as monsoon moisture remains in place across the area. Gusty outflow winds, frequent lightning and flash flooding over the Morris Creek fire and the Ute Park fire scar continue to be the primary hazards. Moisture will decrease on Saturday and Sunday, but minimum humidity is forecast to remain above 30%. Scattered showers and thunderstorms are possible both days.

### **WEATHER FORECAST:**

**Today:**  
**Weather:** Mostly cloudy with showers and thunderstorms likely, mainly in the afternoon. Expect gusty and erratic winds in the vicinity of storms.  
**High Temperatures:** 70-74  
**Min RH:** 41-45%  
**20-FOOT WINDS:** South-southeast 6 to 10 mph with gusts to 20 mph after 1200.  
**CWR ( $\geq 0.10''$ )...**60% **LAL...**4 **Haines Index...**3 (Low)  
**Mixing Height...**6500 ft AGL **Transport Wind...**South-southeast 10 mph

**Tonight:**  
**Weather:** Mostly cloudy with a slight chance of showers and thunderstorms.  
**Low Temperatures:** 48-52  
**Max RH:** 88-92%  
**20-FOOT WINDS:** Variable 3 to 6 mph.  
**CWR ( $\geq 0.10''$ )....**20% **LAL...**2 **Haines Index...**2 (Very Low)

**Outlook for Saturday:**  
**Weather:** Mostly cloudy with scattered showers and thunderstorms. Expect gusty and erratic winds in the vicinity of storms.  
**High Temperatures:** 73-77  
**Min RH:** 36-40%  
**20-FOOT WINDS:** South-southeast 5 to 9 mph with gusts to 18 mph.  
**CWR ( $\geq 0.10''$ )...**50% **LAL...**3 **Haines Index...**4 (Low)  
**Mixing Height...**6500 ft AGL **Transport Wind...**South 10 mph

**Extended Outlook for Sunday:**  
**Weather:** Partly cloudy with a chance of showers and thunderstorms. Expect gusty and erratic winds in the vicinity of storms.  
**High Temperatures:** 74-78  
**Min RH:** 30-34%  
**20-FOOT WINDS:** South-southeast 7 to 11 mph with gusts to 20 mph.  
**CWR ( $\geq 0.10''$ )...**40% **LAL...**3 **Haines Index...**3 (Low)  
**Mixing Height...**9000 ft AGL **Transport Wind...**Southeast 10 mph

**Sunrise...0548**

**Sunset...2021**

# FIRE BEHAVIOR FORECAST

<b>FORECAST NUMBER:</b> 3	<b>TYPE OF FIRE:</b> Wildland Fire
<b>FIRE NAME:</b> Morris Creek	<b>OPERATIONAL PERIOD:</b> July 6
<b>DATE ISSUED:</b> July 5, 2018	<b>TIME ISSUED:</b> 2030
<b>UNIT:</b> State Of New Mexico, Cimarron District	<b>SIGNED:</b> <b>Typed/printed:</b> Stewart Turner, FBAN

## INPUTS

**WEATHER SUMMARY:** For Specifics Please see the attached Incident Weather Forecast.

**WEATHER:** Mostly cloudy with showers and thunderstorms likely.

**MAX TEMP:** 70 to 74° **MIN RH:** 41 to 45%

**20 FOOT WINDS:** South-southeast 6 to 10 mph with gusts to 20 mph after 1200.

**CHANCE OF WETTING RAIN ( $\geq 0.10''$ ):** 60% Haines Index: 3 (low). LAL 4

**FUELS:** The fire is burning through mixed conifer and Ponderosa Pine stands, with timber and grass fuels.

Minimum Fine Dead Fuel Moisture: 9%, 10 Hour DFM: 10%, 100 Hour DFM: 9%, 1000 Hour DFM 7%

**Cimarron RAWS:** ERC – 67

## OUTPUTS

### FIRE BEHAVIOR

#### GENERAL:

Smoldering to low fire behavior will be found around the fire. Gusty winds can accelerate the fire behavior. Wind can overcome humidity increasing short term fire behavior. Short range spotting is possible, but growth will be limited. Probability of Ignition: 30% during the heat of the day with 90% cloud cover.

#### SPECIFIC:

Division A: Smoldering fire behavior is expected.

Division K: Fire will continue to drop off the canyon with rollout and spotting. Expect to see low fire behavior.

Division P: Smoldering fire behavior is expected no perimeter growth is anticipated.

Divisions Z: Smoldering fire behavior is expected no perimeter growth is anticipated.

Initial Attack: Expect to see low fire behavior with gusty outflow winds. Proper size up is important to estimate potential and fire behavior.

### AIR OPERATIONS:

Thunderstorms and outflow wind may hinder air operations.

## SAFETY


Take weather observations frequently. Base all actions on current and expected fire behavior. Reexamine your plan and risk analysis as fire behavior increases.

1. Incident Name:		3. Branch						Division/Group	
MORRIS CREEK								ALPHA	
2. Operational Period:									
Date/Time From:		Date/Time To:							
7/6/2018 0600		7/6/2018 2000							
4. Operations Personnel									
OPERATIONS CHIEF		DARRELL WILLIS / AARON HULBURD KEN WATKINS / TRUE BROWN (t)				BRANCH DIRECTOR			
DIVISION/GROUP SUPERVISOR		CORY CARLSON / KEITH BORGHOFF (t)				AIR OPERATION DIRECTOR		ALANNA ENGLISH	
						AIR ATTACK SUPERVISOR		ALAN SCHUSTER	
MEDICAL GROUND TRANSPORT TIME		Less than hours	2	X	2 HOURS TO 4 HOURS	MORE THAN 4 HOURS	FIELD MEDICAL OFFICER SAFETY OFFICER IVAN CUPP / CLINT GREEN SOFR (t)		
5. Resources Assigned this Period									
Type/Kind	Resource Name	RES #	LWD	Leader	# Persons	Drop Off PT./Time	Pick Up PT./Time		
T2IA	RETURNING HEROS BLUE	C-14	7/12	JUSTIN MAESTAS	20	0600 / UU BAR	2000 / UU BAR		
T6	AF3572	E-61	7/13	GARRETT HANSON	3	0600 / UU BAR	2000 / UU BAR		
DOZ1	UU BAR D8			MIKE DECKER	1	0600 / UU BAR	2000 / UU BAR		
	EMPF	E-11	7/19	MEDIC TEAM 3	2	0600 / UU BAR	2000 / UU BAR		
	AMBO2	E-8	7/19	KEVIN MCMAHON	2	0600 / UU BAR	2000 / UU BAR		
	TFLD	O-3	7/14	DANIEL CEDENO	1	0600 / UU BAR	2000 / UU BAR		
	STEN	O-62		STEVEN SANDOVAL (t)	1	0600 / UU BAR	2000 / UU BAR		
						0600 / UU BAR	2000 / UU BAR		
						0600 / UU BAR	2000 / UU BAR		
						0600 / UU BAR	2000 / UU BAR		
						0600 / UU BAR	2000 / UU BAR		
						0600 / UU BAR	2000 / UU BAR		
						0600 / UU BAR	2000 / UU BAR		
						0600 / UU BAR	2000 / UU BAR		
						0600 / UU BAR	2000 / UU BAR		
						0600 / UU BAR	2000 / UU BAR		
						0600 / UU BAR	2000 / UU BAR		
						0600 / UU BAR	2000 / UU BAR		
						0600 / UU BAR	2000 / UU BAR		
						0600 / UU BAR	2000 / UU BAR		
						0600 / UU BAR	2000 / UU BAR		
						0600 / UU BAR	2000 / UU BAR		
						0600 / UU BAR	2000 / UU BAR		
						0600 / UU BAR	2000 / UU BAR		
						0600 / UU BAR	2000 / UU BAR		
						0600 / UU BAR	2000 / UU BAR		
						0600 / UU BAR	2000 / UU BAR		
6. Control Operations/Work Assignment									
TASK			PURPOSE			END STATE			
HOLD AND SECURE FIRELINE FROM MORRIS CREEK ROAD SOUTHEAST TOWARDS DIVISION ZULU			MINIMIZE FIRE SPREAD TO THE SOUTH / WEST AND TO LESSEN IMPACT TO WATERSHED AND VALUES AT RISK.			FIRE CONTAINED AS SAFELY AND EFFICIENTLY AS POSSIBLE AND NEGATIVE IMPACTS FROM SUPPRESSION EFFORTS AND FIRE ARE MINIMIZED.			
7. Special Instructions									
8. Division/Group Communication Summary									
Function	Channel	RX Frequency N/W	RX Tone/NAC	TX Frequency N/W	TX Tone/NAC	Mode			
TACTICAL	1	168.0500	136.5	168.0500	136.5				
COMMAND	8	169.5375	136.5	164.7125	136.5				
AIR TO GROUND	14	169.2000		169.2000					
9. Prepared By (Resource Unit Leader)			Approved By (Planning Section Chief)			Date	Time		
B. Williams BIL WILLIAMS			[Signature]			7/5/2018	1800		



<b>1. Incident Name:</b>			<b>3. Branch</b>		<b>Division/Group</b>			
<h1>MORRIS CREEK</h1>					<h1>KILO</h1>			
<b>2. Operational Period:</b>								
Date/Time From:		Date/Time To:						
7/6/2018 0600		7/6/2018 2000						
<b>4. Operations Personnel</b>								
<b>OPERATIONS CHIEF</b>		DARRELL WILLIS / AARON HULBURD KEN WATKINS / TRUE BROWN (t)			<b>BRANCH DIRECTOR</b>			
<b>DIVISION/GROUP SUPERVISOR</b>		JOSH CABRAL / STEVEN GRIEGO (t)			<b>AIR OPERATION DIRECTOR</b>			
<b>MEDICAL GROUND TRANSPORT TIME</b>		Less than hours		2 <b>X</b> 2 HOURS TO 4 HOURS		<b>AIR ATTACK SUPERVISOR</b>		
		MORE THAN 4 HOURS					ALANNA ENGLISH	
							ALAN SCHUSTER	
							IVAN CUPP / CLINT GREEN SOFR (t)	
<b>5. Resources Assigned this Period</b>								
Type/Kind	Resource Name	RES #	LWD	Leader	# Persons	Drop Off PT./Time	Pick Up PT./Time	
T2	APACHE KID	O-66	7/18	JAMES BARRON	9	0600 / UU BAR	2000 / UU BAR	
T6	E 2574	E-60		SANCHEZ	4	0600 / UU BAR	2000 / UU BAR	
WT2S	2562			NOLAN	2	0600 / UU BAR	2000 / UU BAR	
	EMPF	E-9	7/19	MEDIC TEAM 2	2	0600 / UU BAR	2000 / UU BAR	
						0600 / UU BAR	2000 / UU BAR	
						0600 / UU BAR	2000 / UU BAR	
						0600 / UU BAR	2000 / UU BAR	
						0600 / UU BAR	2000 / UU BAR	
						0600 / UU BAR	2000 / UU BAR	
						0600 / UU BAR	2000 / UU BAR	
						0600 / UU BAR	2000 / UU BAR	
						0600 / UU BAR	2000 / UU BAR	
						0600 / UU BAR	2000 / UU BAR	
						0600 / UU BAR	2000 / UU BAR	
						0600 / UU BAR	2000 / UU BAR	
						0600 / UU BAR	2000 / UU BAR	
						0600 / UU BAR	2000 / UU BAR	
						0600 / UU BAR	2000 / UU BAR	
						0600 / UU BAR	2000 / UU BAR	
						0600 / UU BAR	2000 / UU BAR	
						0600 / UU BAR	2000 / UU BAR	
						0600 / UU BAR	2000 / UU BAR	
						0600 / UU BAR	2000 / UU BAR	
						0600 / UU BAR	2000 / UU BAR	
						0600 / UU BAR	2000 / UU BAR	
						0600 / UU BAR	2000 / UU BAR	
						0600 / UU BAR	2000 / UU BAR	
						0600 / UU BAR	2000 / UU BAR	
						0600 / UU BAR	2000 / UU BAR	
						0600 / UU BAR	2000 / UU BAR	
						0600 / UU BAR	2000 / UU BAR	
<b>6. Control Operations/Work Assignment</b>								
<b>TASK</b>		<b>PURPOSE</b>				<b>END STATE</b>		
HOLD, AND SECURE FIRELINE NORTH OF THE MORRIS CREEK ROAD.		MINIMIZE FIRE SPREAD TO THE NORTH / WEST AND TO LESSEN IMPACT TO WATERSHED AND VALUES AT RISK.				FIRE CONTAINED AS SAFELY AND EFFICIENTLY AS POSSIBLE AND NEGATIVE IMPACTS FROM SUPPRESSION EFFORTS AND FIRE ARE MINIMIZED.		
<b>7. Special Instructions</b>								
APACHE KID REPORT TO CRATER PEAK REPEATER TO CREATE DEFENSIBLE SPACE AROUND SITE.								
<b>8. Division/Group Communication Summary</b>								
Function	Channel	RX Frequency N/W	RX Tone/NAC	TX Frequency N/W	TX Tone/NAC	Mode		
TACTICAL	2	168.2000	136.5	168.2000	136.5			
COMMAND	8	169.5375	136.5	164.7125	136.5			
AIR TO GROUND	14	169.2000		169.2000				
<b>9. Prepared By (Resource Unit Leader)</b>			<b>Approved By (Planning Section Chief)</b>			<b>Date</b>	<b>Time</b>	
B. Williams REBL			[Signature]			7/5/2018	1800	

Division/Group Assignment List (ICS 204 WF)

1. Incident Name:			3. Branch		Division/Group			
<b>MORRIS CREEK</b>					<b>PAPA</b>			
2. Operational Period:								
Date/Time From:		Date/Time To:						
7/6/2018 0600		7/6/2018 2000						
4. Operations Personnel								
OPERATIONS CHIEF		DARRELL WILLIS / AARON HULBURD KEN WATKINS / TRUE BROWN (t)			BRANCH DIRECTOR			
DIVISION/GROUP SUPERVISOR		B. DAVIDSON / M. ROSENGARTAN (t)			AIR OPERATION DIRECTOR		ALANNA ENGLISH	
MEDICAL GROUND TRANSPORT TIME		Less than hours	2 <b>X</b>	2 HOURS TO 4 HOURS	MORE THAN 4 HOURS	AIR ATTACK SUPERVISOR	ALAN SCHUSTER	
						FIELD MEDICAL OFFICER	EUGENE PINO	
						SAFETY OFFICER		
5. Resources Assigned this Period								
Type/Kind	Resource Name	RES #	LWD	Leader	# Persons	Drop Off PT./Time	Pick Up PT./Time	
IHC	MESA	C-4	7/8	PAT MOORE	22	0600 / UU BAR	2000 / UU BAR	
T3	SAN JUAN COUNTY B-12	E-44	7/17	CHAD VECCELLIO	3	0600 / UU BAR	2000 / UU BAR	
T6	ANTHIS FAMILY ENT	E-38	7/18	JOHN HOELLERICH	3	0600 / UU BAR	2000 / UU BAR	
DOZ1	BLACKSTEN	E-69		Z. BLACKSTEN	1	0600 / UU BAR	2000 / UU BAR	
WT2T	ST. JOHNS FIRE 1976	E-46	7/17	ROBERT VALLEJOS	2	0600 / UU BAR	2000 / UU BAR	
WT2T	PINETOP FIRE	E-45	7/18	JAMES MEEK	2	0600 / UU BAR	2000 / UU BAR	
	EMPF	E-10	7/19	MEDIC TEAM 1	2	0600 / UU BAR	2000 / UU BAR	
	TFLD	C-1.2		MYRON SHECHE	1	0600 / UU BAR	2000 / UU BAR	
	TFLD	O-68		JAKE GUADIANA (t)	1	0600 / UU BAR	2000 / UU BAR	
	HEQB	C-4.13		ADAM OLSON (t)	1	0600 / UU BAR	2000 / UU BAR	
	HEQB	O-31		LORENZO VELASQUEZ (t)	1	0600 / UU BAR	2000 / UU BAR	
						0600 / UU BAR	2000 / UU BAR	
						0600 / UU BAR	2000 / UU BAR	
						0600 / UU BAR	2000 / UU BAR	
						0600 / UU BAR	2000 / UU BAR	
						0600 / UU BAR	2000 / UU BAR	
						0600 / UU BAR	2000 / UU BAR	
						0600 / UU BAR	2000 / UU BAR	
						0600 / UU BAR	2000 / UU BAR	
						0600 / UU BAR	2000 / UU BAR	
						0600 / UU BAR	2000 / UU BAR	
						0600 / UU BAR	2000 / UU BAR	
						0600 / UU BAR	2000 / UU BAR	
						0600 / UU BAR	2000 / UU BAR	
						0600 / UU BAR	2000 / UU BAR	
6. Control Operations/Work Assignment								
TASK			PURPOSE			END STATE		
HOLD AND SECURE FIRELINE NORTH OF MORRIS CREEK ROAD TO THE RIM'S EDGE.			MINIMIZE FIRE SPREAD TO THE NORTH / EAST AND TO LESSEN IMPACT TO WATERSHED AND VALUES AT RISK.			FIRE CONTAINED AS SAFELY AND EFFICIENTLY AS POSSIBLE AND NEGATIVE IMPACTS FROM SUPPRESSION EFFORTS AND FIRE ARE MINIMIZED.		
7. Special Instructions								
8. Division/Group Communication Summary								
Function	Channel	RX Frequency N/W	RX Tone/NAC	TX Frequency N/W	TX Tone/NAC	Mode		
TACTICAL	3	168.6000	136.5	168.6000	136.5			
COMMAND	7	170.0000	136.5	166.6750	136.5			
AIR TO GROUND	14	169.2000		169.2000				
9. Prepared By (Resource Unit Leader) BILL KUAMOO			Approved By (Planning Section Chief)  PSC2(t)			Date	Time	
						7/5/2018	1800	

Division/Group Assignment List (ICS 204 WF)

<b>1. Incident Name:</b> <div style="text-align: center; font-size: 24px; font-weight: bold;">MORRIS CREEK</div>	<b>3. Branch</b> <div style="text-align: center; font-size: 24px; font-weight: bold;">ZULU</div>
<b>2. Operational Period:</b> Date/Time From: 7/6/2018 0600      Date/Time To: 7/6/2018 2000	

<b>4. Operations Personnel</b>					
OPERATIONS CHIEF	DARRELL WILLIS / AARON HULBURD KEN WATKINS / TRUE BROWN (t)			BRANCH DIRECTOR	
DIVISION/GROUP SUPERVISOR	SHELBY ERICKSON / LEVI GUFFEY (t)			AIR OPERATION DIRECTOR AIR ATTACK SUPERVISOR FIELD MEDICAL OFFICER	
MEDICAL GROUND TRANSPORT TIME	Less than 2 hours	<input checked="" type="checkbox"/>	2 HOURS TO 4 HOURS	MORE THAN 4 HOURS	ALANNA ENGLISH ALAN SCHUSTER EUGENE PINO

5. Resources Assigned this Period							
Type/Kind	Resource Name	RES #	LWD	Leader	# Persons	Drop Off PT./Time	Pick Up PT./Time
IHC	NAVAJO	C-12	7/6	VANN SMITH	21	0600 / UU BAR	2000 / UU BAR
T2IA	NAVAJO SCOUTS	C-2	7/14	BRIAN BILLIE	23	0600 / UU BAR	2000 / UU BAR
T6	E-55		7/16	BILL EASTMAN	3	0600 / UU BAR	2000 / UU BAR
T6	AMERICAN WILDFIRE	E-36	7/17	ALLEN TRUJILLO	3	0600 / UU BAR	2000 / UU BAR
WT1S	FORT VALLEY TOWING	E-17	7/17	MARK DAUER	1	0600 / UU BAR	2000 / UU BAR
	AMBO1	E-7	7/18	CAMPOS/APODACA	2	0600 / UU BAR	2000 / UU BAR
TFLD	TFLD	O-4	7/14	ROCKY BEERY	1	0600 / UU BAR	2000 / UU BAR
TFLD	TFLD	C-4.12	7/8	TY NUANES (t)	1	0600 / UU BAR	2000 / UU BAR
						0600 / UU BAR	2000 / UU BAR
						0600 / UU BAR	2000 / UU BAR
						0600 / UU BAR	2000 / UU BAR
						0600 / UU BAR	2000 / UU BAR
						0600 / UU BAR	2000 / UU BAR
						0600 / UU BAR	2000 / UU BAR
						0600 / UU BAR	2000 / UU BAR
						0600 / UU BAR	2000 / UU BAR
						0600 / UU BAR	2000 / UU BAR
						0600 / UU BAR	2000 / UU BAR
						0600 / UU BAR	2000 / UU BAR
						0600 / UU BAR	2000 / UU BAR
						0600 / UU BAR	2000 / UU BAR
						0600 / UU BAR	2000 / UU BAR
						0600 / UU BAR	2000 / UU BAR
						0600 / UU BAR	2000 / UU BAR
						0600 / UU BAR	2000 / UU BAR
						0600 / UU BAR	2000 / UU BAR
						0600 / UU BAR	2000 / UU BAR
						0600 / UU BAR	2000 / UU BAR
						0600 / UU BAR	2000 / UU BAR
						0600 / UU BAR	2000 / UU BAR

6. Control Operations/Work Assignment		
<b>TASK</b>  HOLD, AND SECURE FIRELINE SOUTHWEST TOWARDS DIVISION ALPHA.	<b>PURPOSE</b>  MINIMIZE FIRE SPREAD TO THE EAST AND TO LESSEN IMPACT TO WATERSHED AND VALUES AT RISK.	<b>END STATE</b>  FIRE CONTAINED AS SAFELY AND EFFICIENTLY AS POSSIBLE AND NEGATIVE IMPACTS FROM SUPPRESSION EFFORTS AND FIRE ARE MINIMIZED.

**7. Special Instructions**

8. Division/Group Communication Summary						
Function	Channel	RX Frequency N/W	RX Tone/NAC	TX Frequency N/W	TX Tone/NAC	Mode
TACTICAL	4	166.7250	136.5	166.7250	136.5	
COMMAND	7	170.0000	136.5	166.6750	136.5	
AIR TO GROUND	14	169.2000		169.2000		

<b>9. Prepared By (Resource Unit Leader)</b> Bill KRAMO <i>(Signature)</i>	<b>Approved By (Planning Section Chief)</b> [Signature] PS22 (t)	<b>Date</b> 7/5/2018	<b>Time</b> 1800
--	--	-------------------------	---------------------



<b>1. Incident Name:</b> <h1>MORRIS CREEK</h1>					<b>3. Branch</b> CONTINGENCY				<b>Division/Group</b> CONTINGENCY			
<b>2. Operational Period:</b> Date/Time From: 7/6/2018 0600 Date/Time To: 7/6/2018 2000												
<b>4. Operations Personnel</b>												
<b>OPERATIONS CHIEF</b>			DARRELL WILLIS / AARON HULBURD KEN WATKINS / TRUE BROWN (t)					<b>BRANCH DIRECTOR</b>				
<b>DIVISION/GROUP SUPERVISOR</b>			BRAD JOHNSON					<b>AIR OPERATION DIRECTOR</b>		ALANNA ENGLISH		
								<b>AIR ATTACK SUPERVISOR</b>				
<b>MEDICAL GROUND TRANSPORT TIME</b>			Less than 2 hours	<input checked="" type="checkbox"/>	2 HOURS TO 4 HOURS	MORE THAN 4 HOURS	<b>FIELD MEDICAL OFFICER</b>		ALAN SCHUSTER			
								<b>SAFETY OFFICER</b>				
<b>5. Resources Assigned this Period</b>												
Type/Kind	Resource Name	RES #	LWD	Leader	# Persons	Drop Off PT./Time	Pick Up PT./Time					
T2IA	RED RIVER FIRE CHASERS	C-14	7/16	DAVID WILLIS	18	0600 / UU BAR	2000 / UU BAR					
DOZ2	FIRE UP LLC	E-68	7/19	KIRK DAVIS	1	0600 / UU BAR	2000 / UU BAR					
	TFLD	O-52	7/18	JASON ESCANDEL	1	0600 / UU BAR	2000 / UU BAR					
	TFLD	O-71	7/18	PAUL LEMMON (t)	1	0600 / UU BAR	2000 / UU BAR					
						0600 / UU BAR	2000 / UU BAR					
						0600 / UU BAR	2000 / UU BAR					
						0600 / UU BAR	2000 / UU BAR					
						0600 / UU BAR	2000 / UU BAR					
						0600 / UU BAR	2000 / UU BAR					
						0600 / UU BAR	2000 / UU BAR					
						0600 / UU BAR	2000 / UU BAR					
						0600 / UU BAR	2000 / UU BAR					
						0600 / UU BAR	2000 / UU BAR					
						0600 / UU BAR	2000 / UU BAR					
						0600 / UU BAR	2000 / UU BAR					
						0600 / UU BAR	2000 / UU BAR					
						0600 / UU BAR	2000 / UU BAR					
						0600 / UU BAR	2000 / UU BAR					
						0600 / UU BAR	2000 / UU BAR					
						0600 / UU BAR	2000 / UU BAR					
						0600 / UU BAR	2000 / UU BAR					
<b>6. Control Operations/Work Assignment</b>												
<b>TASK</b>				<b>PURPOSE</b>				<b>END STATE</b>				
<b>7. Special Instructions</b>												
<b>8. Division/Group Communication Summary</b>												
Function	Channel	RX Frequency N/W	RX Tone/NAC	TX Frequency N/W	TX Tone/NAC	Mode						
TACTICAL	6	168.2500	136.5	168.2500	136.5							
COMMAND	7	170.0000	136.5	166.6750	136.5							
AIR TO GROUND	14	169.2000		169.2000								
<b>9. Prepared By (Resource Unit Leader)</b> B. KURBAN BHLKJAMQD				<b>Approved By (Planning Section Chief)</b> [Signature] P-224)				<b>Date</b> 7/5/2018		<b>Time</b> 1800		

**AIR OPERATIONS SUMMARY** Prepared by: Dan Sullivan AOBDD      Prepared Date/Time: 7-5-18 1800      Prepared Date/Time: 7-5-18 1800

1. INCIDENT NAME: Morris Creek Fire      2. OPERATIONAL PERIOD DATE: Wednesday 7-6-18      START TIME: 0600 END TIME: 2030      SUNRISE: 0550 SUNSETS: 2018

3. REMARKS (Safety Notes, Hazards, Air Operations Special Equipment, etc.):

- Advise Helicopters/Helibase/Air Attack immediately of any unidentified aircraft/Drones within the fire area/TFR
- Keep track of gallons taken per dip site

4. READY ALERT AIRCRAFT:

5. TFR #8/5611 5-NM 13,000 msl

8. FIXED WING: # Avail / Type / Make-Model / FAA N# / Base(s)

ATGS Aircraft: 1GB – English

Medivac - refer to medical plan. Taos Care flight or Lobo 55 (A-9)

6. PERSONNEL	Phone	7. FREQUENCIES	AM	FM
AOBD: Dan Sullivan	928-925-2439	Air / Air (TFR) Primary	123.8250 (A-7)	
Morris Creek Helibase	760-518-3537	Air/Air Secondary	118.9750 (A-20)	
ATGS: Alanna English	928-699-0935	A/G -1	169.2000 (A-8)	
ATGS:		A/G -2	167.9875 (A-21)	
Dispatch Aircraft Desk (Taos)	575-758-6208	Deck	N/A	
		Air-Medical Helicopters	VMED 28	155.3400
		Air Guard	TX Tone 156.7	168.625
			TX/RX Tone 110.9	



**TFR MAP**

- H-10 36 20.504 x 105 03.658 Type 1
- H-20 36 20.726 x 105 03.969 Type 3
- H-30 36 21.549 x 105 04.280 Type 2
- H-45 36 21.180 x 105 02.226 Type 3
- H-50 36 21.527 x 105 02.160 Type 3
- H-55 36 21.679 x 105 01.075 Type 3
- H-60 36 22.124 x 105 01.430 Type 2
- H-65 36 22.191 x 105 01.321 Type 2
- H-70 36 22.532 x 104 59.821 Type 1

9. Helicopters (Use Additional Sheets as Necessary)

FAA N#	TY	MAKE/MODEL	BASE	AVAIL	START	REMARKS
1KA (A-2)	1	K-Max	Angel Fire			Matt Muller (209) 605-7823
3FH (A-12)	1	S-70 FireHawk	Angel Fire			Morgan Meserth (208) 861-2346
0VR	3	AS350 B3	Angle Fire			JOE Scholz 505-270-5525

MISC. INFORMATION

A/C orders DIVS to Ops, or through Air Attack if up.

Approved By: Dan Sullivan AOBDD

*D. SLL*

# SAFETY MESSAGE

INCIDENT NAME: Morris Creek

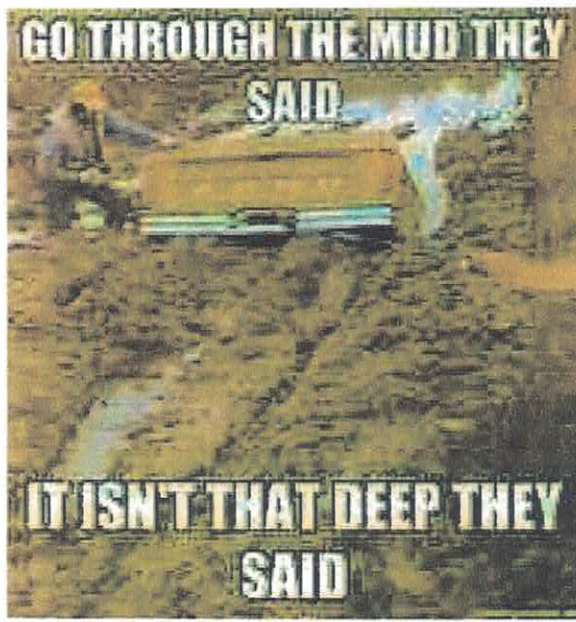
OPERATIONAL PERIOD: 07/06/2018 Day

## MAJOR HAZARDS:

- Still a good chance of rain over the fire area
- Possible Flash Flooding
- Outflow winds with thunderstorms
- Impacted slick roads

### *Fire Order of the Day:*

*Base all actions on current and expected behavior of the fire...*



### Planning for Medical Emergencies

Prior to each operational period, Incident Commanders, supervisors, and all wildland firefighters need to ask and be able to answer the following three questions:

1. What are we going to do if someone gets hurt?
  - Are there personnel on your crew/division/fire that can provide medical support?
  - What type of equipment is available to treat and transport injured personnel?
2. How will we get them out of here?
  - Cold you get an injured firefighter to a road or to a helispot?
  - How many personnel and what kind of equipment would you need to get an injured firefighter out?
3. How long will it take to get them to a hospital?
  - Where is the closest hospital?
  - Will you use air or ground transportation?
  - Could conditions change and affect the transportation timeline?

Smoke/Night Time/Fire Behavior/Mechanical Failure

## NARRATIVE:

All operational activities should be based on the answers to the questions above regarding planning for medical emergencies. If the answers are insufficient, stop, reassess, and consider alternate strategies and tactics. *IRPG page 2*

- Be aware of possible flash flooding that still may occur in and around the fire area, listen to updates from the IMET and your lookouts. Don't wait to make the decision to pull out to better ground.
- Driving safety- use headlights and seatbelts at all times. Beware of deer/people jogging near the Philmont area, follow posted speed limits.

Wash your hands often, try and get good rest,  
**TAKE GOOD CARE OF EACH OTHER!**

TEAM SAFETY OFFICER:

Bill Kornrumpf SOF2, Clint Remington SOF2 (t) and the rest of your Safety Team

Incident Radio Communications Plan (ICS 205) Day Operations				
<b>Incident Name: Morris Creek Fire</b>				<b>Operational Period: 7/6/2018</b>
Channel	Function	Frequency	Narrowband	Assignment & Remarks
1	TAC 1	RX&TX168.0500 rx&tx tone: 136.5	Narrow	Div A
2	TAC 2	RX&TX168.2000 rx&tx tone: 136.5	Narrow	Div K
3	TAC 3	RX&TX168.6000 rx&tx tone: 136.5	Narrow	Div P
4	TAC 4	RX&TX166.7250 rx&tx tone: 136.5	Narrow	Div Z
5	TAC 5	RX&TX166.7750 rx&tx tone: 141.3	Narrow	I/A
6	TAC 6	RX&TX168.2500 rx&tx tone 136.5	Narrow	Contingency
7	CMD 7	RX:170.000 TX:166.6750 tx&rx tone: 136.5	Narrow	Command on Rayado Mesa
8	CMD 8	RX:169.5375 TX:164.7125 tx&rx tone: 136.5	Narrow	Command on Angel Fire
9	NMSF FIRE	RX&TX159.4200 tx tone: 156.7	Narrow	
10	R3 TAC 1	RX&TX167.550	Narrow	
11	NMSF TAC	RX&TX159.2250	Narrow	
12	ST FIRE	RX&TX 154.3100	Narrow	
13	VMED28	RX &TX155.3400 tx tone 156.7	Narrow	Medical Emergency
14	A/G PRI	RX&TX169.2000	Narrow	Primary Air to Ground
15	A/G SEC	RX&TX167.9875	Narrow	Secondary Air to Ground
16	Air Guard	RX&TX168.625 tx tone: 110.9	Narrow	Emergency Use only

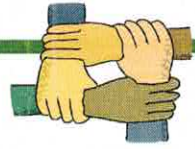
Prepared by: Martin Johns COML *Martin Johns*

Note: CMD 7 and CMD 8 are linked. If one doesn't work, try the other.





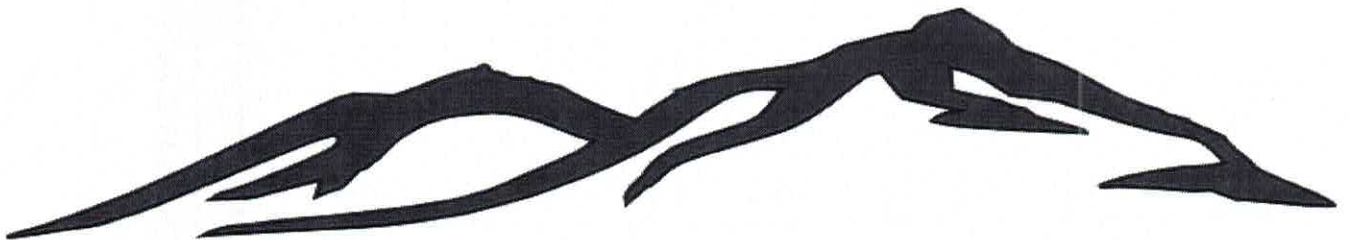
## Human Resource Message



# Managing Stress

- Relaxation – break the stress cycle with frequent stress breaks throughout the day – stretch, take a walk, deep breathing
- Eat three nutritional meals a day
- Eat healthy snacks
- Get enough sleep – (work/rest ratio)

Look Around You, Look at the Beauty of Nature and Feel Gratitude for Where You Are. The Well-Being of YOU and those AROUND YOU depend on it. - Anonymous



Davina Diaz, HRSP, located at the Cimarron Elementary, down hall and left of the turquoise garden box.



**IAP Map**  
**Morris Creek Fire**

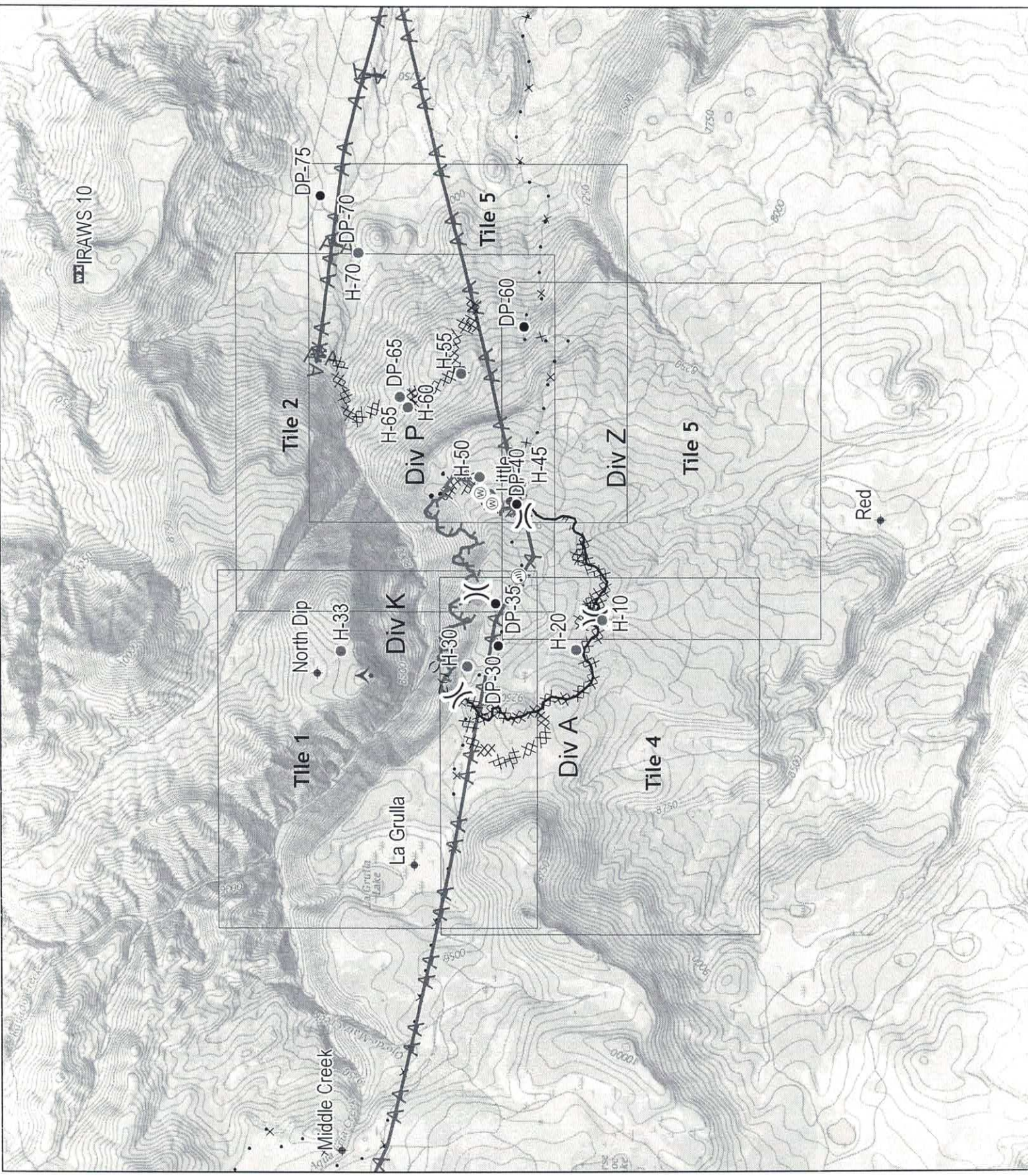
1,604 Acres  
 IR Flight 7/5 1:22  
 NM-N2S-000489

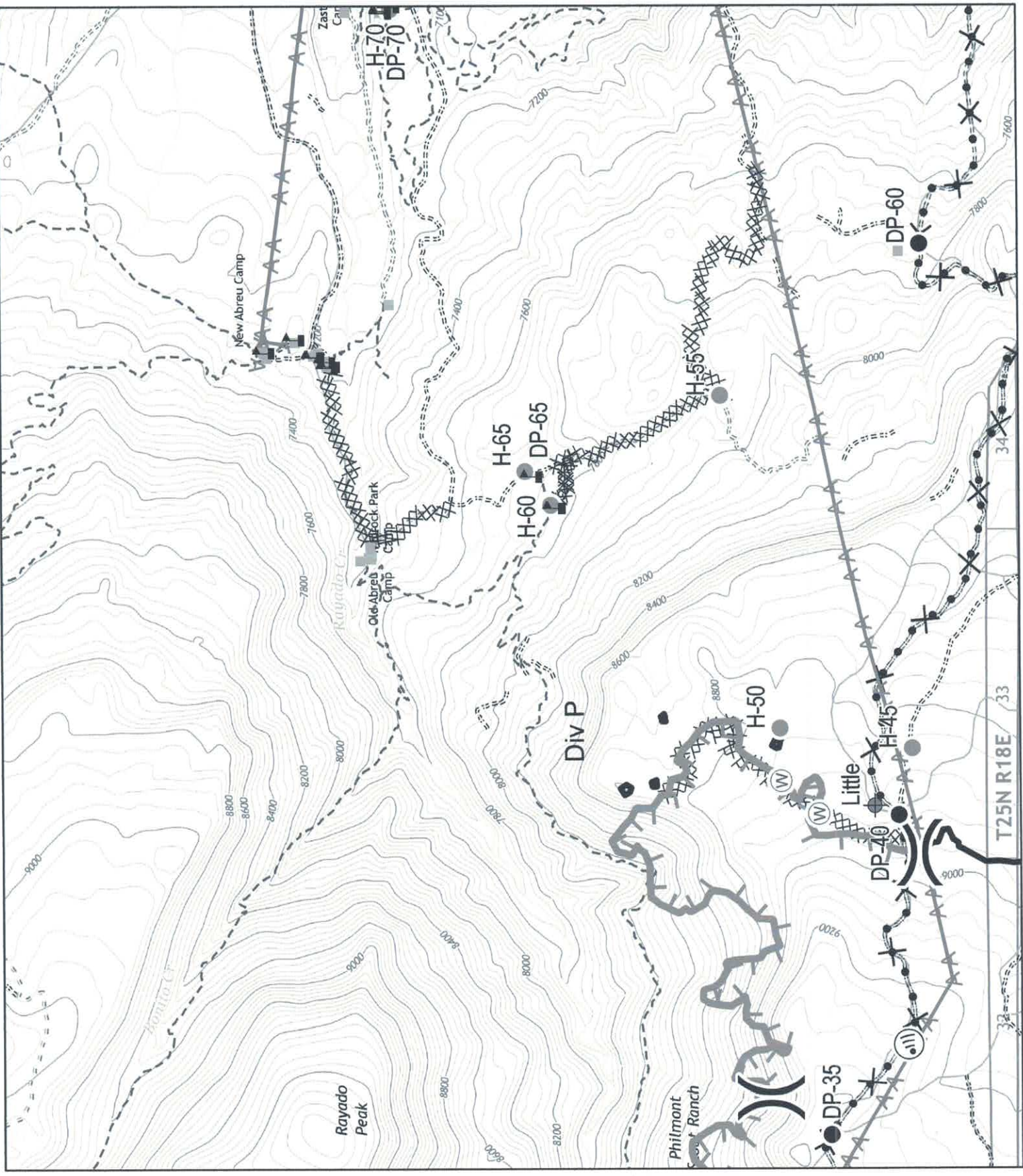
July 6, 2018

- Aerial Hazard
- Dip Site
- Drop Point
- Helipoint
- Internet Access
- Mobile Weather Unit
- Water Source
- Division Break
- Uncontrolled Fire Edge
- Controlled Line
- Completed Dozer Line
- Completed Hand Line
- Proposed Dozer Line
- Aerial Hazard
- Ridge/Geographic Feature



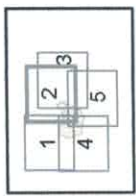
0 1/4 1/2 3/4 1  
 Miles



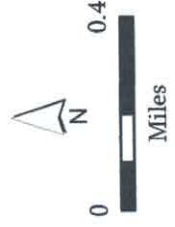


**IAP Map**  
**Morris Creek Fire**  
 1,604 Acres  
 NM-N2S-000489

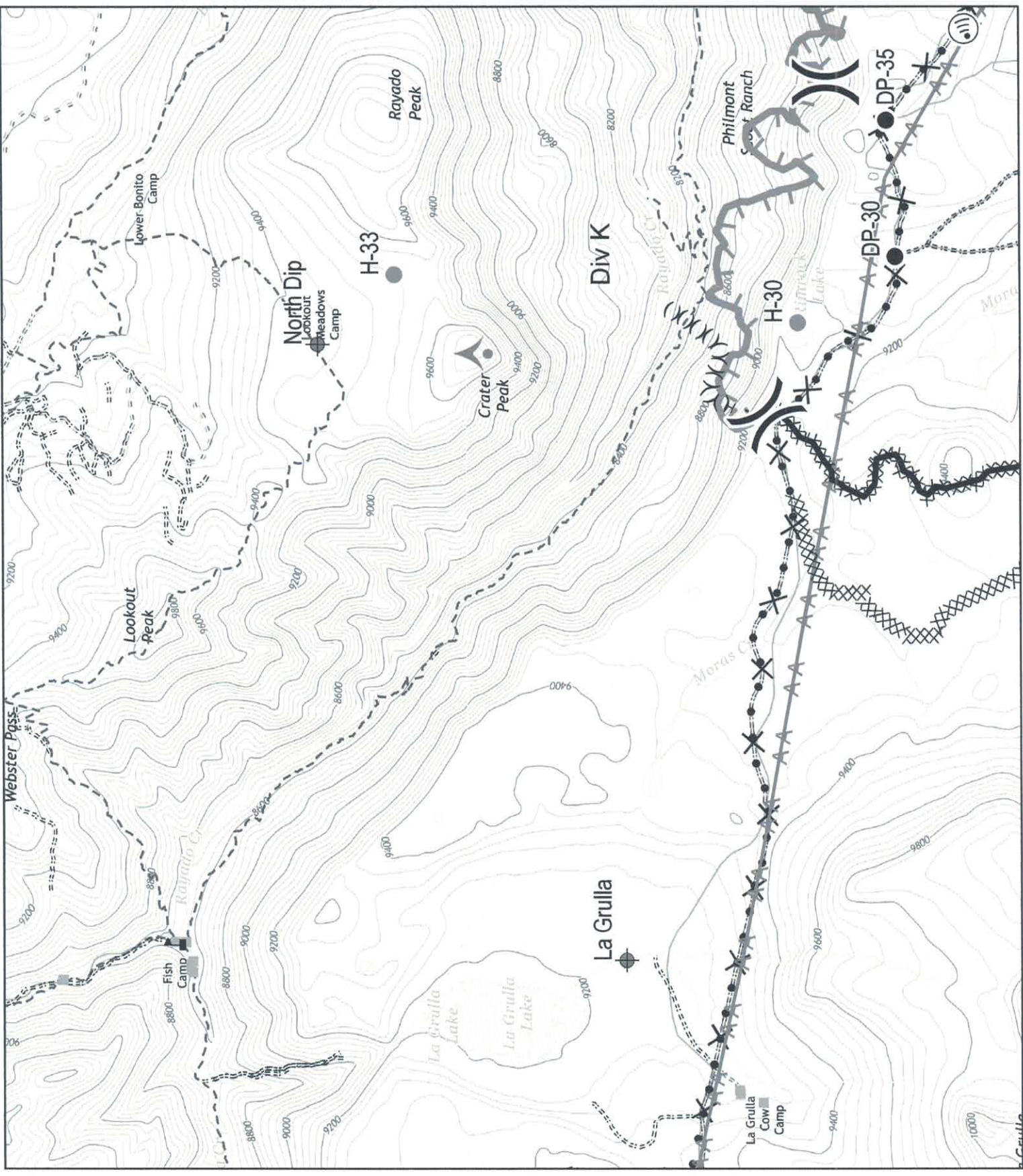
July 6, 2018  
 Page 2 of 5



- Dip Site
- Drop Point
- Fire Spot
- Internet Access
- Water Source
- Value at Risk
- Division Break
- Uncontrolled Fire Edge
- Controlled Line
- Completed Dozer Line
- Proposed Dozer Line
- Aerial Hazard
- Structures
- Roads & Trails**
- Four Wheel Drive
- Emergency
- Out of Service



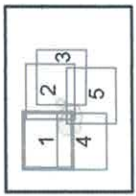
NAD 1983 UTM Zone 13N



**IAP Map**  
**Morris Creek Fire**  
 1,604 Acres  
 NM-N2S-000489

July 6, 2018

Page 1 of 5



- Aerial Hazard
- Dip Site
- Drop Point
- Helispot
- Internet Access
- Value at Risk
- Division Break
- Uncontrolled Fire Edge
- Controlled Line
- Completed Dozer Line
- Completed Hand Line
- Proposed Dozer Line
- Aerial Hazard
- Ridge/Geographic Feature
- Structures
- Roads & Trails**
- Four Wheel Drive
- Emergency
- Out of Service





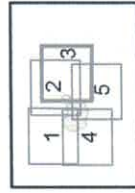
**IAP Map**  
**Morris Creek Fire**

1,604 Acres

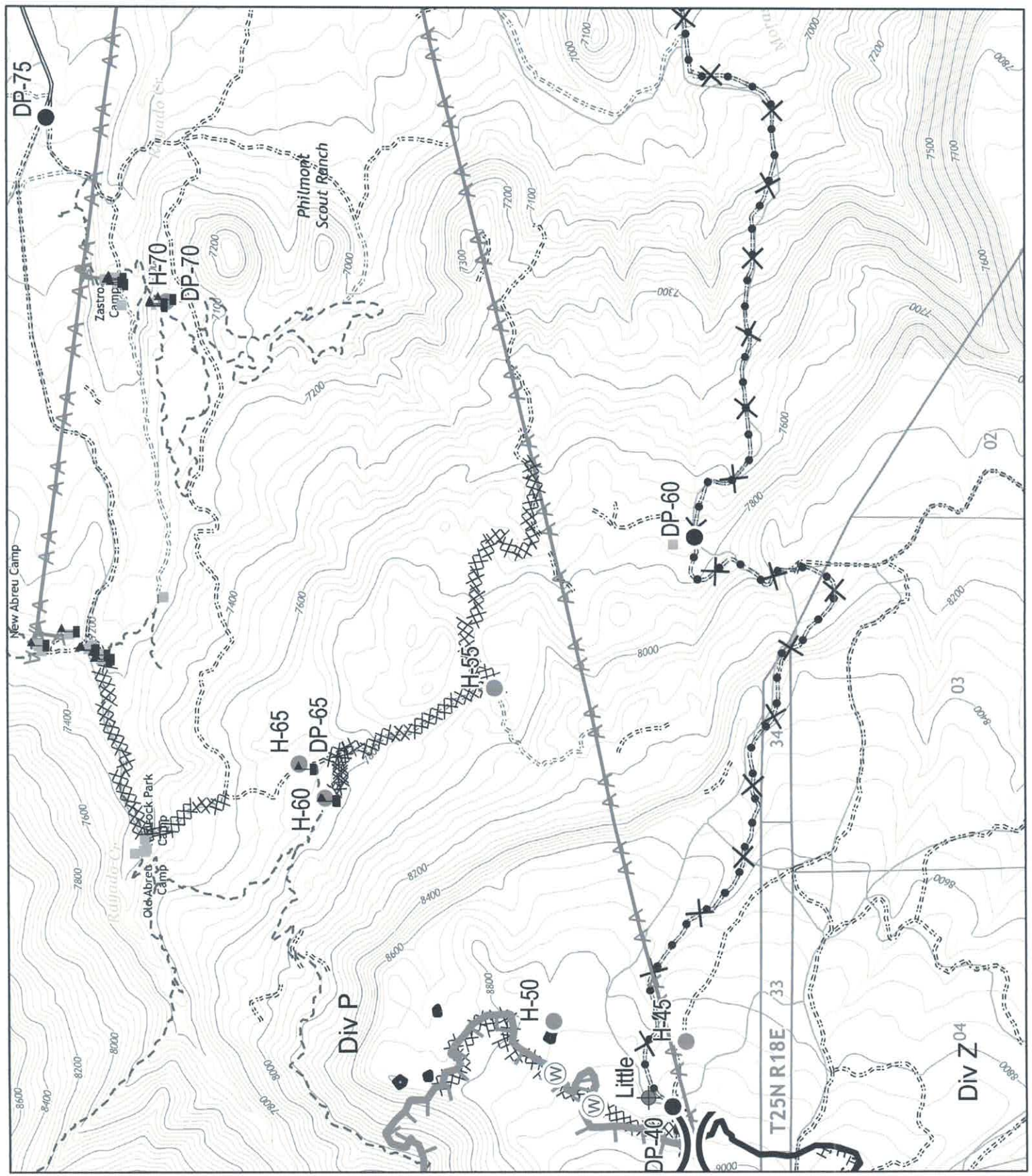
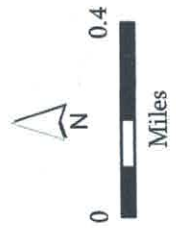
NM-N2S-000489

July 6, 2018

Page 3 of 5



- Dip Site
- Drop Point
- Helispot
- Water Source
- Value at Risk
- Division Break
- Uncontrolled Fire Edge
- Controlled Line
- Completed Dozer Line
- Completed Hand Line
- Proposed Dozer Line
- Aerial Hazard
- Structures
- Roads & Trails**
- Improved
- Four Wheel Drive
- Emergency
- Out of Service



NAD 1983 UTM Zone 13N



**IAP Map**

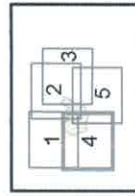
**Morris Creek Fire**

1,604 Acres

NM-N2S-000489

July 6, 2018

Page 4 of 5



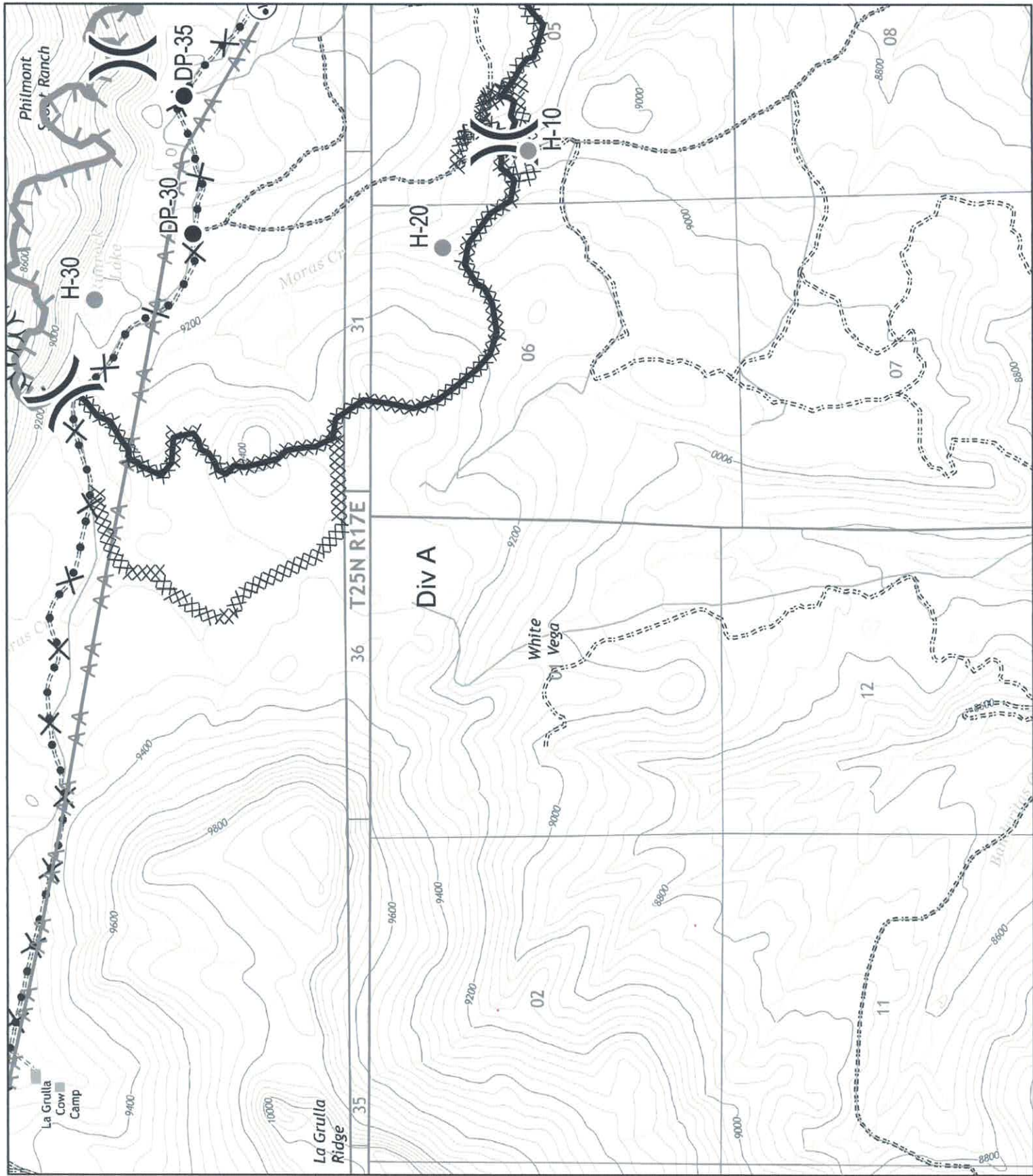
- Drop Point
- Helipot
- Ⓜ Internet Access
- Ⓜ Division Break
- Uncontrolled Fire Edge
- Controlled Line
- XXX Completed Dozer Line
- H · Completed Hand Line
- X · Proposed Dozer Line
- AA Aerial Hazard
- ( ) Ridge/Geographic Feature
- Structures
- Roads & Trails**
- === Emergency

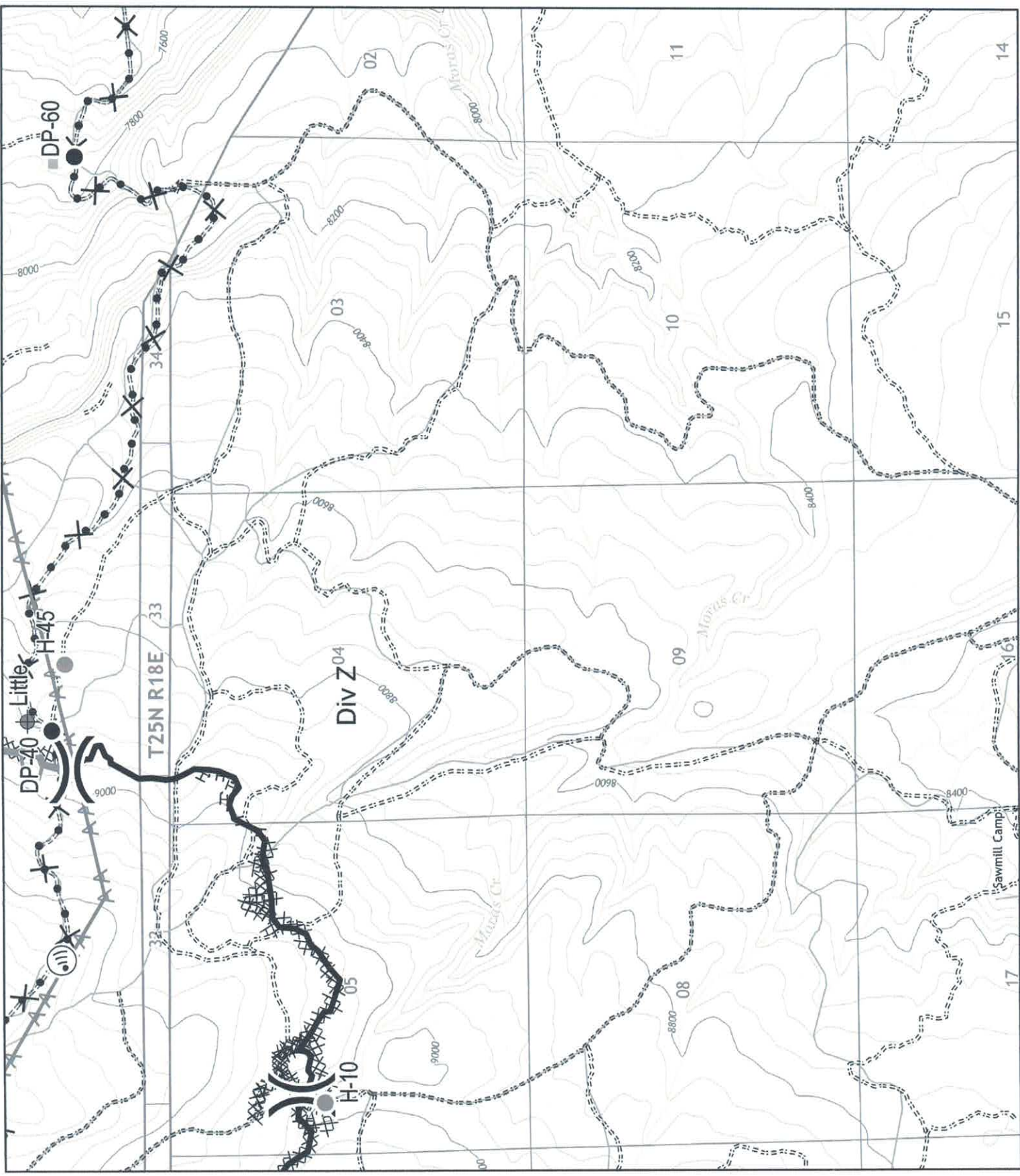


0 0.4

Miles

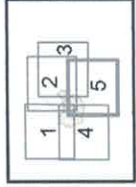
NAD 1983 UTM Zone 13N





**SOUTHWEST AREA**  
**INCIDENT MANAGEMENT TEAM 3**  
**IAP Map**  
**Morris Creek Fire**  
 1,604 Acres  
 NM-N2S-000489

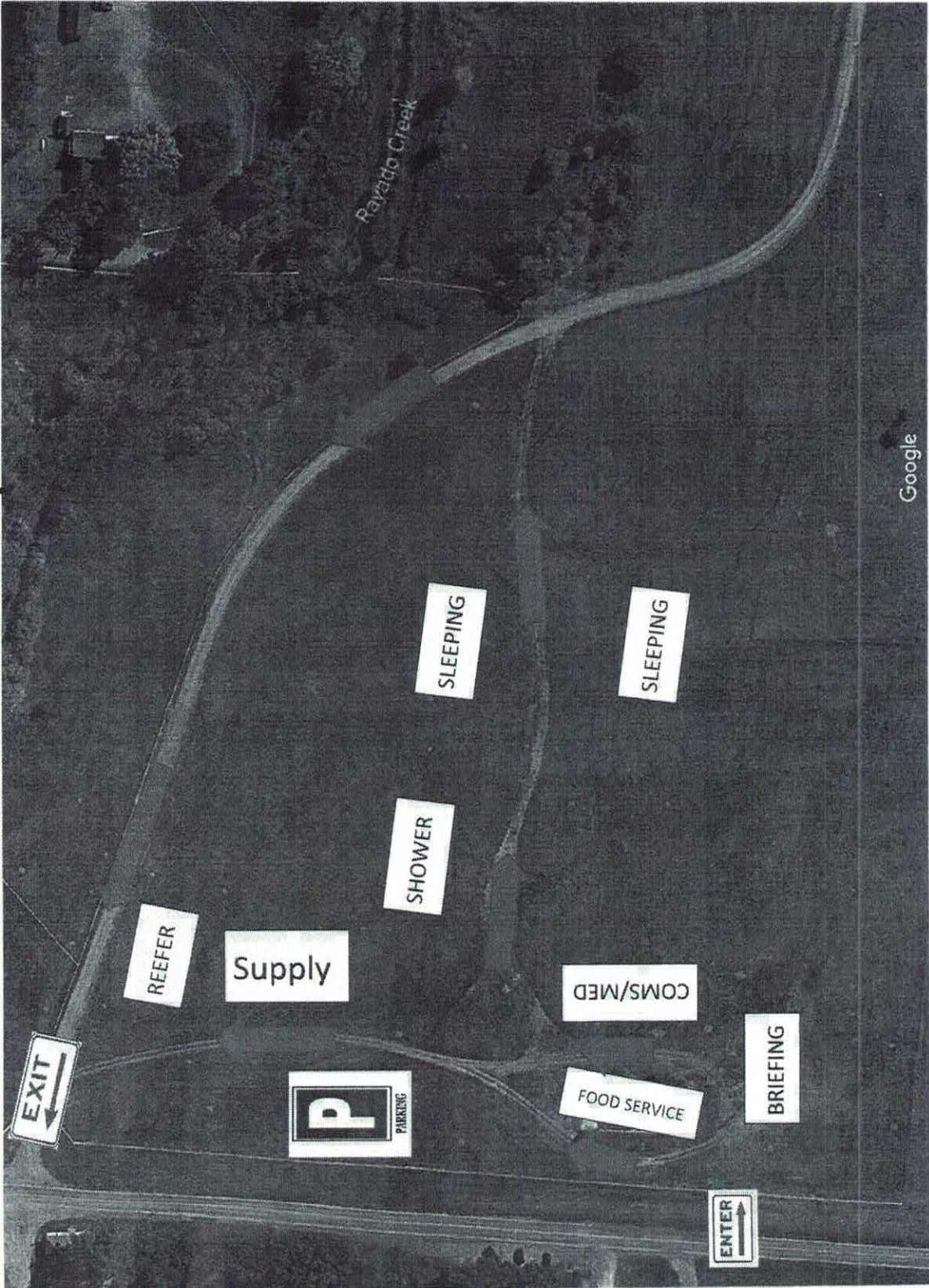
July 6, 2018  
 Page 5 of 5



- ◆ Dip Site
- Drop Point
- Helispot
- Ⓜ Internet Access
- ⌋ Division Break
- ▬ Uncontrolled Fire Edge
- ▬ Controlled Line
- ▬ Completed Dozer Line
- H • Completed Hand Line
- X • Proposed Dozer Line
- AA Aerial Hazard
- Structures
- Roads & Trails**
- === Emergency



# Morris Creek Base Camp





**INCIDENT  
LINE SUPPLY ORDER FORM  
(OSC/Division Supervisors Only)**

Date & Time Order Was Placed	Order Reference # (DIV + #)		Location for Delivery (Division/LZ/DP/Lat. Long)
<b>DATE:</b>		GROUND SUPPORT	
<b>TIME:</b>		HELICOPTER	
		TO BE PICKED UP BY @	

<b>DATE NEEDED:</b>	<b>TIME NEEDED:</b>
Order received in COMMUNICATIONS by: Name:	Time:
Order received in SUPPLY by: Name:	Time:
Order received in GROUND SUPPORT by: Name:	Time:
Order received in HELIBASE by: Name:	Time:
Order delivered/shipped to final location by: Name:	Time:

#	ITEM	QUANTITY	SHIPPED	PENDING	#	ITEM	QUANTITY	SHIPPED	PENDING
1.	Breakfast – Meals				31.	Lightweight Pump Kit			
2.	Lunch – Meals				32.	Hose – 1 ½” ft.			
3.	Dinner – Meals				33.	Hose – 1” ft.			
4.	MRE’s (# of Cases) 12/cs				34.	Hose – ¾ ” ft.			
5.	Cubies of Water – ea.				35.	Reducer – 1 ½” x 1”			
6.	Bottled Water - Case				36.	Reducer – 1” x ¾”			
7.	Gatorade – Case				37.	Gated “Y” – 1 ½” ea.			
8.	Batteries – AA/box 24 ea.				38.	Gated “Y” – 1” ea.			
9.	Batteries – AAA/C/D ea.				39.	Shut off valve ¾” ea.			
10.	Fuel – Unleaded – Gallons				40.	In – Line Tee 1 ½” x1” ea.			
11.	Fuel – Diesel – Gallons				41.	Nozzle – 1 ½” ea.			
12.	Fuel – Drip Torch (60/40 mix) gals.				42.	Nozzle – 1” ea.			
13.	Bar Oil – QT’s/Gallons				43.	Nozzle ¾”			
14.	2 cycle oil – (1 per gallon)				44.	First Aid Kit – 20 man ea.			
15.	Sleeping Bags – 25 degree				45.	Chainsaw Kit – ea.			
16.	Sleeping Bags – 40 degree				46.	DIV Pump Kit (next page) ea.			
17.	Plastic – roll/sq. ft.				47.	DIV Hose lay Kit (next page) ea.			
18.	Parachute Cord – roll/ft.				48.	Line Spike Hygiene Kit (next page) ea.			
19.	Shovels – ea.								
20.	Pulaski – ea.					<b>MISC. Please list below</b>			
21.	Combi – ea.								
22.	McLeod – ea.								
23.	Fussee – case								
24.	Drip Torch – Full/Empty								
25.	Backpack Pump – Full/Empty								
26.	Slingable Blivet – Suppression								
27.	Slingable Blivet – Drinking					<b>Accountable Property #’s</b>			
28.	Folding Tank 1000/1500 gals								
29.	Pumpkin 1500/3000/6000 gals								
30.	Mark III Pump Kit								

**Team Ordering/ Timeline Process:**

**0600 – Morning Briefing, start of crew time.**

**1500 – DIVS to have next days resource order ready for OPS.**

- **Original food orders must be placed 6-hours, plus drive time, prior to actual feeding time.**
- **Last call to change food orders is 4-hours, plus drive time.**
- **All crew level orders will be placed through DIVS.**
- **DIVS will place all orders through Communications Unit.**
- **All orders will be tracked using the process found on the front of form.**

Division Pump Kit			Division Hose Lay Kit		
Item	NFES#	Quantity	Item	NFES#	Quantity
Hose 1½"	1239	1000'	Hose 1½"	1239	3500'
Hose 1"	1238	1000'	Hose 1"	1238	1700'
Hose, ¾"	1016	500'	Hose, ¾"	1016	3000'
Tee, 1 ½" – 1"	731	4	Tee, 1 ½" – 1"	731	15
Nozzle, 1"	138	4	Nozzle, 1"	138	15
Nozzle, ¾"	136	4	Nozzle, ¾"	136	30
1 ½" Gated "Y"	231	4	Valve, 1 ½" Gated "Y"	231	5
1" Gated "Y"	2059	4	Valve, 1" Gated "Y"	2059	2
¾" Gated "Y"	272	4	Valve ¾" Gated "Y"	272	30
Reducers, 1 ½" – 1"	0010	4	Shut off valve ¾"	738	20
Reducers, 1" – ¾"	733	4	Reducers, 1 ½" – 1"	0010	10
Double Female 1"	710	1	Reducers, 1" – ¾"	733	10
Double Female 1 ½"	857	1	Double Female 1"	710	1
Fuel 5 Gal. To Match Pump	606	2	Double Female 1 ½"	857	1
2 Cycle Oil	341	2	Bag, Slingable Water	437	6

**Pick One of the Pumps Below**

Pump, Lightweight	670	1			
Pump Mark III	870	1			

Line Spike Hygiene Kit			Line Spike Hygiene Kit (continued)		
Trauma shears		1 ea	Latex or Nitrile gloves		1 box
Moleskin		3 ft	Benadryl		1 box
Gold Bond Blue Powder		5 ea	Spenco 2nd skin		3 boxes
Gold Bond Green Powder		2 ea	Ibuprofen (Advil)		25 ea
Gold Bond Yellow Powder		5 ea	Aminofen (Tylenol)		25 ea
Tolfanate Foot Powder		3 ea	Antiseptic Wipes		20 ea
Vet Wrap (Koflex)		6 ea	Sting Relief		20 ea
Throat Lozenges		40 ea	Baby Wipes		1 box
Hand Sanitizer		20 ea	Bactracin		10 ea
Bug Repellent		3 ea	Chap Stick		10 ea
Sun Screen		5 ea	Ziplock Bags		10 ea
Eye Wash		5 ea			

**SAW PARTS ORDER FORM**

<b>CREW NAME</b>		<b>CREW #</b>
<b>MAKE:</b> <b>STIHL</b> <b>HUSQVARNA</b>		
<b>CIRCLE ONE</b>		
<b>MODEL:</b>		
<b>DATE NEEDED:</b>		<b>TIME NEEDED:</b>
<b>QUANTITY:</b>	<b>BAR:</b>	
	20" 22" 24" 28" 30" 32" 36" OTHER_____	
	<b>CIRCLE ONE</b>	
<b>QUANTITY:</b>	<b>BAR CHAIN:</b>	
	<b>DRIVERS:</b> 72 84 91 105 OTHER_____	
	<b>CIRCLE ONE</b>	
<b>PITCH:</b>	¼" 3/8" .325" .404" ½"	
	<b>CIRCLE ONE</b>	
<b>GUAGE:</b>	.043 .050 .058 .063	
	<b>CIRCLE ONE</b>	
<b>TOOTH LAYOUT:</b>	<b>FULL      SEMI SKIP      FULL SKIP</b>	
	<b>CIRCLE ONE</b>	
<b>TOOTH CUT:</b>	<b>CHISEL      MICRO-CHISEL      SEMI CHISEL      CHAMFER CHISEL</b>	
	<b>CIRCLE ONE</b>	
<b>QUANTITY</b>	<b>ITEM</b>	<b>MAKE/MODEL OR PART NUMBER</b>
	AIR FILTER	
	FUEL FILTER	
	E-CLIP	
	SPROCKET (# TEETH)	
	NEEDLE BEARING	
	BAR NUT	
	SPARK PLUG	
	BEARING GREASE	
	OTHER	
<b>DIVISION/GROUP SUPERVISOR SIGNATURE:</b>		<b>DATE:</b>

# MEDICAL PLAN (ICS 206 WF)

Controlled Unclassified Information//Basic

1. Incident/Project Name		2. Operational Period						
<b>Morris Creek Fire</b>		0600-2000		07/06/2018				
3. Ambulance Services								
Name	Complete Address	Phone & EMS Frequency	Advanced Life Support (ALS)					
			Yes	No				
Cimarron EMS	133 N Jefferson Ave, Cimarron NM, 87714	Raton Dispatch 575-445-2704 or 911	X	X				
Raton EMS	127 Clark Ave Raton, NM 87740	Raton Dispatch 575-445-2704 or 911		X				
Angel Fire EMS	11 N Angel Fire Rd, Angel Fire, NM 87710	Red River dispatch 575-754-2333 or 911	X	X				
4. Air Ambulance Services								
Name	Phone	Type of Aircraft & Capability						
Lifeguard Air Emergency	Raton Dispatch 575-445-2704 or 911 or 505-272-3115	Life Guard #1 @ Sunport, ~1 hr ETA to ICP, 24/7 VMED28						
Tristate Care flight	Raton Dispatch 575-445-2704 or 911 or 800-800-0900	Care flight 16 is an Astar 350 @ Taos Airport, ~45min+ to ICP Dependent on availability, 24/7, VMED28						
Classic Lifeguard	Raton Dispatch 575-445-2704 or 911 or 800-444-9223	Classic 1 is a bell 407 @ Los Alamos, ~75min+ to ICP Dependent on availability, 24/7, VMED28						
LOBO 55 New Mexico National Guard	Taos Interagency dispatch 575-758-6208	24/7, Hoist, ALS, VMED28						
5. Hospitals								
Name Complete Address	GPS Datum – WGS 84 Coordinate Standard Degrees Decimal Minutes DD° MM.MMM' N - Lat DD° MM.MMM' W - Long		Approximate Travel Time From ICP		Phone	Helipad Yes No		Level of Care Facility
	Lat:	Long:	Air	Gnd		Yes	No	
Holy Cross Hospital 1397 Weimer Rd, Taos NM, 87571	Lat:	N 36 22.070	25 min	90 min	575-758-8883 ER:575-751-5835	X		Critical Access (no ortho)
	Long:	W 105 34.63						
	VHF:							
Miners Colfax Medical Center 203 Hospital Dr, Raton, NM	Lat:	N 35 51.73	25 min	60 min	575-445-7700 ER:575-445-7703	X		Level 3 Trauma Center
	Long:	W 104 26.55						
	VHF:							
University of New Mexico 2211 Lomas Blvd NE Albuquerque NM 87106	Lat:	N 35 05.277	1+ hr	3+ hrs	505-272-2411 Dr:888-866-7257	X		Level 1 Trauma Center Limited Burn Center <b>Medical helicopters only</b>
	Long:	W 106 37.124						
	VHF:							
Philmont Medical Clinic 10 Conejo Rd, Cimarron, NM	Lat:	N 36 27.269	10 min	10 min	575-376-1149		X	Critical Access
	Long:	W 104 57.409						
	VHF:							
Alta Vista Regional Hospital 104 Legion Dr, Las Vegas, NM 87701	Lat:	N 35 37.417	30 min	1.5 hrs	505-426-3500 ER:505-426-3502	X		Acute Care Hospital
	Long:	W 105 12.642						
	VHF:							
Christus St Vincent Regional Medical Center 455 St Michaels Dr, Santa Fe NM 87505	Lat:	N 35 39.607	1 hr	2.5 hrs	505-913-3361	X		Level 3 Trauma Center
	Long:	W 105 56.792						
	VHF:							
University of Colorado Hospital/Burn Center 12605 E 16 <sup>th</sup> Ave Aurora Co 80045	Lat:	N 39 44.530	2.5+hrs	5+ hrs	720-848-7583 Dr: 844-285-4555	X		Level 1 Trauma Center Burn Center
	Long:	W 104 50.545						
	VHF:							




## MEDICAL PLAN (ICS 206 WF)

Controlled Unclassified Information//Basic

6. Division   Branch   Group	Area Location Capability			
<b>DIV ALPHA</b>	<b>EMS Responders &amp; Capability:</b>	Ambo 2 (McMahon EMPF/Jessen EMTF) Medic Team 3 (Palmer EMPF/Crawford EMTF)		
	<b>Equipment Available on Scene:</b>	ALS Ambo and ALS Kit and BLS Kit		
	<b>Medical Emergency Channel:</b>	Command &/or VMED 28		
	<b>ETA for Ambulance to Scene:</b>	All Times Approximate		
	<b>Air:</b>	1 hr		
	<b>Ground:</b>	20+ min		
	<b>Approved Helispot:</b>	H10	H20	H30 (Rimrock Helispot)
	<b>Lat:</b>	36 20.504	36 20.726	36 21.549
	<b>Long:</b>	105 03.658	105 03.969	105 04.280
<b>DIV KILO</b>	<b>EMS Responders &amp; Capability:</b>	Medic Team 2 (Kahn EMPF/Becker EMTF)		
	<b>Equipment Available on Scene:</b>	ALS Kit and BLS Kit		
	<b>Medical Emergency Channel:</b>	Command &/or VMED 28		
	<b>ETA for Ambulance to Scene:</b>	All Times Approximate		
	<b>Air:</b>	1 hr		
	<b>Ground:</b>	20+ min		
	<b>Approved Helispot:</b>	H30 (Rimrock Helispot)		
	<b>Lat:</b>	36 21.549		
	<b>Long:</b>	105 04.280		
<b>DIV PAPA</b>	<b>EMS Responders &amp; Capability:</b>	Medic Team 1 (Hayes EMPF/Rone EMTF)		
	<b>Equipment Available on Scene:</b>	ALS Kit and BLS Kit		
	<b>Medical Emergency Channel:</b>	Command &/or VMED 28		
	<b>ETA for Ambulance to Scene:</b>	All Times Approximate		
	<b>Air:</b>	1 hr		
	<b>Ground:</b>	20+ min		
	<b>Approved Helispot:</b>	H45	H50	
	<b>Lat:</b>	36 21.180	36 21.527	
	<b>Long:</b>	105 02.226	105 02.160	
<b>DIV ZULU</b>	<b>EMS Responders &amp; Capability:</b>	AMBO 1 (Campos EMTF/Apodaca EMPF)		
	<b>Equipment Available on Scene:</b>	ALS Ambo		
	<b>Medical Emergency Channel:</b>	Command &/or VMED 28		
	<b>ETA for Ambulance to Scene:</b>	All Times Approximate		
	<b>Air:</b>	1 hr		
	<b>Ground:</b>	20+ min		
	<b>Approved Helispot:</b>	H45	H10	
	<b>Lat:</b>	36 21.180	36 20.504	
	<b>Long:</b>	105 02.226	105 03.658	
<b>IA GROUP</b>	<b>EMS Responders &amp; Capability:</b>	None/911		
	<b>Equipment Available on Scene:</b>	None		
	<b>Medical Emergency Channel:</b>	Command &/or VMED 28		
	<b>ETA for Ambulance to Scene:</b>	All Times Approximate		
	<b>Air:</b>	UNK		
	<b>Ground:</b>	UNK		
	<b>Approved Helispot:</b>	None		
	<b>Lat:</b>			
<b>Long:</b>				

# MEDICAL PLAN (ICS 206 WF)

Controlled Unclassified Information//Basic

<b>Contingency</b>	EMS Responders & Capability:		None/911				
	Equipment Available on Scene:		None				
	Medical Emergency Channel:		Command &/or VMED 28				
	ETA for Ambulance to Scene:		All Times Approximate				
	Air:		1 hr				
	Ground:		30+ min				
	Approved Helispot:		H55	H60	H70		
	Lat:		36 21.679	36 22.124	36 22.532		
	Long:		105 01.075	105 01.430	104 59.821		
<b>7. Name &amp; Location</b>							
Remote Camp Location(s)							
<b>BASE CAMP</b>	Point of Contact:		Jesse Hernandez MEDL (520)-560-2742				
	EMS Responders & Capability:		AMBO 1 & AMBO 2 (rotate nightly)				
			Medic Team 4 (Estrada EMPF/Racicot EMTF)				
	Equipment Available on Scene:		500 man kit				
	Medical Emergency Channel:		Command &/or VMED 28				
	ETA for Ambulance to Scene:		All Times Approximate				
	Air:		1 hr				
	Ground:		30 min day/10 min night				
	Approved Helispot:		H70				
Lat:		36 22.532					
Long:		104 59.821					
<b>ICP</b>	Point of Contact:		Alan Schuster MEDL (928-533-6231)				
			Jeff Hatch MEDL (435)-414-3521				
	EMS Responders & Capability:		911				
	Equipment Available on Scene:		100 man Kit				
	Medical Emergency Channel:		Command &/or VMED 28				
	ETA for Ambulance to Scene:		All Times Approximate				
	Air:		30min Dependent on availability				
	Ground:		10min Dependent on availability				
	Approved Helispot:		Wayne Baker Heliport				
Lat:		N 36 30.761					
Long:		W 104 55.484					
<b>8. Prepared By (Medical Unit Leader)</b>		<b>9. Date/Time</b>		<b>10. Reviewed By Safety Officer &amp; Medical Command officer</b>			
Alan Schuster (928)-533-6231 Jeff Hatch (435)-414-3521 		07/05/2018 @2100		Bill Kornrumpf  SOF2(T) Troy Lutrick 		07/05/2018 @2100	



# MEDICAL PLAN (ICS 206 WF)

Controlled Unclassified Information//Basic

## Medical Incident Report

**FOR A NON-EMERGENCY INCIDENT, WORK THROUGH CHAIN OF COMMAND TO REPORT AND TRANSPORT INJURED PERSONNEL AS NECESSARY.**

**FOR A MEDICAL EMERGENCY: IDENTIFY ON SCENE INCIDENT COMMANDER BY NAME AND POSITION AND ANNOUNCE "MEDICAL EMERGENCY" TO INITIATE RESPONSE FROM IMT COMMUNICATIONS/DISPATCH.**

**Use the following items to communicate situation to communications/dispatch.**

**1. CONTACT COMMUNICATIONS / DISPATCH (Verify correct frequency prior to starting report)**

*Ex: "Communications, Div. Alpha. Stand-by for Emergency Traffic."*

**2. INCIDENT STATUS: Provide incident summary (including number of patients) and command structure.**

*Ex: "Communications, I have a Red priority patient, unconscious, struck by a falling tree. Requesting air ambulance to Forest Road 1 at (Lat./Long.) This will be the Trout Meadow Medical, IC is TFLD Jones. EMT Smith is providing medical care."*

Severity of Emergency / Transport Priority	<input type="checkbox"/> <b>RED / PRIORITY 1 Life or limb threatening injury or illness. Evacuation need is IMMEDIATE</b> <i>Ex: Unconscious, difficulty breathing, bleeding severely, 2<sup>o</sup> – 3<sup>o</sup> burns more than 4 palm sizes, heat stroke, disoriented.</i> <input type="checkbox"/> <b>YELLOW / PRIORITY 2 Serious Injury or illness. Evacuation may be DELAYED if necessary.</b> <i>Ex: Significant trauma, unable to walk, 2<sup>o</sup> – 3<sup>o</sup> burns not more than 1-3 palm sizes.</i> <input type="checkbox"/> <b>GREEN / PRIORITY 3 Minor Injury or illness. Non-Emergency transport</b> <i>Ex: Sprains, strains, minor heat-related illness.</i>	
Nature of Injury or Illness & Mechanism of Injury		Brief Summary of Injury or Illness <i>(Ex: Unconscious, Struck by Falling Tree)</i>
Transport Request		Air Ambulance / Short Haul/Hoist Ground Ambulance / Other
Patient Location		Descriptive Location & Lat. / Long. (WGS84)
Incident Name		Geographic Name + "Medical" <i>(Ex: Trout Meadow Medical)</i>
On-Scene Incident Commander		Name of on-scene IC of Incident within an Incident <i>(Ex: TFLD Jones)</i>
Patient Care		Name of Care Provider <i>(Ex: EMT Smith)</i>

**3. INITIAL PATIENT ASSESSMENT: Complete this section for each patient as applicable (start with the most severe patient)**

Patient Assessment: See IRPG page 106

Treatment:

**4. TRANSPORT PLAN:**

Evacuation Location (if different): *(Descriptive Location (drop point, intersection, etc.) or Lat. / Long.)* Patient's ETA to Evacuation Location:

Helispot / Extraction Site Size and Hazards:

**5. ADDITIONAL RESOURCES / EQUIPMENT NEEDS:**

*Example: Paramedic/EMT, Crews, Immobilization Devices, AED, Oxygen, Trauma Bag, IV/Fluid(s), Splints, Rope rescue, Wheeled litter, HAZMAT, Extrication*

**6. COMMUNICATIONS: Identify State Air/Ground EMS Frequencies and Hospital Contacts as applicable**

Function	Channel Name/Number	Receive (RX)	Tone/NAC *	Transmit (TX)	Tone/NAC *
COMMAND					
AIR-TO-GRND					
TACTICAL					

**7. CONTINGENCY: Considerations:** *If primary options fail, what actions can be implemented in conjunction with primary evacuation method? Be thinking ahead.*

**8. ADDITIONAL INFORMATION:** *Updates/Changes, etc.*

**REMEMBER:** Confirm ETA's of resources ordered. Act according to your level of training. Be Alert. Keep Calm. Think Clearly. Act Decisively.