

MORRIS CREEK

NM-N2S-000489

Incident Action Plan

SOUTHWEST AREA



Financial Codes

PNLXN1 (1502) [P]

GPS Points can be collected in either WGS84 OR NAD83

Morris Creek Fire Information: (575) 383 4597 8am to 9pm

7/10/2018 thru 7/10/2018

0600 to 2000



VALUES AT RISK

- **Emergency Responders and the Public**
- **CS Ranch and associated infrastructure**
- **UU Bar Ranch and associated infrastructure**
- **Philmont Scout Ranch and associated infrastructure**
- **State Trust Lands**
- **Watersheds**
- **Grazing Lands**
- **Local Infrastructure, Utilities and Power Lines**

Incident Objectives List (ICS 202)

1. Incident Name	2. Date Prepared	3. Time Prepared
MORRIS CREEK	7/9/2018	1800
4. Operational Period (Date and Time)		
From: 7/10/2018 at: 0600	From: 7/10/2018	at: 2000
5. General Control Objectives for the Incident (include Alternatives)		
* Engage the fire with tactics and strategies to provide the highest level of firefighter and public safety and where suppression actions have a high probability of success.		
* Minimize the fire effects from high severity fire and fire suppression activities where possible.		
* Utilize low intensity fire within T&E and sensitive species habitat and to minimize impacts to watersheds.		
* Maintain and enhance relationships with local land partners and neighboring communities. Provide regular incident updates to affected stakeholders.		
* Provide Initial Attack Response in area of the Temporary Flight Restriction (TFR), and assist New Mexico State Forestry with Initial Response as requested by the Cimarron District.		
*		
*		
*		
*		
6. Weather Forecast for Operational Period		
See Attached		
7. General Safety Message		
Driving is one of the largest hazards on any incident. When backing use a spotter when available. Ensure rules of engagement are followed, utilizing a risk management strategy. Maintain two to one work:rest ratio.		
8. Attachments (check if attached)		
Organization List (ICS 203) Assignment List (ICS 204) Communications Plan (ICS 205)	Medical Plan (ICS 206) Incident Map Traffic Plan	General Forecast Fire Behavior
9. Prepared by (Plans)	10. Approved by (IC)	

ORGANIZATION ASSIGNMENT LIST			9. Operations Section	
1. Incident Name			Operations	DARRELL WILLIS / AARON HULBURD
MORRIS CREEK				KEN WATKINS / TRUE BROWN (t)
2. Date		3. Time	a. Branch I - Division/Groups	
7/9/2018		1800	Branch Director	
4. Operational Period			Deputy	
From: 7/10/2018 0600 To: 7/10/2018 2000			DIVISION ALPHA / ZULU	SHELBY ERICKSON
5. Incident Commander and Staff			DIVISION CHARLIE	DANIEL CEDENO
Incident Commander	DAVE GESSER		DIVISION KILO	JOSH CABRAL / STEVEN GRIEGO (t)
Deputy	MARK BERNAL (t)		DIVISION MIKE	CORY CARLSON / KEITH BORGHOFF (t)
Safety Officer	BILL KORNRUMPH		DIVISION OSCAR	BRAD JOHNSON / LEVI GUFFEY (t)
Information Officer	SHARMA CHAVEZ / SANDRA LOPEZ		DIVISION PAPA	B. DAVIDSON / M. ROSENGARTAN (t)
Liaison Officer	PETE SMITH		DIVISION IA GROUP	MARIO OROZCO
Human Resources	DAVINA DIAZ		DIVISION	
6. Agency Representative			b. Branch II - Division/Groups	
Agency	Name		Branch Director	
DISTRICT FORESTER	ERNIE LOPEZ		Deputy	
FIRE MANAGEMENT OFFICER	CHRIS ROMO			
DIST. TIMBER MGMT OFFICER	ARNIE FRIEDT			
RESOURCE ADVISOR	JOHN CELLEY			
			c. Branch III - Division/Groups	
7. Planning Section			Branch Director	
Chief	TROY LUTRICK		Deputy	
Deputy	C. VANDRIEL / J. THORNBURG (t)			
Resource Unit	BILL KUAMOO			
Situation Unit	SONYA FEASTER			
Situation Unit	DON WEAVER (t)			
Documentation Unit	PHIL SETTLES			
Demobilization Unit	JIM COOLEY			
Training Specialist	MICHAEL WILSON			
Training Specialist	JONENA HEARST (t)		d. Air Operations Branch	
Status Check-in	BOB SCABBY		Air Operations Branch Director	DAN SULLIVAN
Status Check-in			Air Support Supervisor	
ITSS	BLAKE MILLER		Air Attack Supervisor	ALANNA ENGLISH
GISS	M. LEHR / S. WALTERSHEID		Helibase Manager	
IMET	ROBERT RICKEY		Air Tanker Coordinator	
FBAN	STEWART TURNER		10. Finance Section	
8. Logistics Section			Chief	KEN LEAKE
Chief	SUSAN CORNETT		Deputy	MEGAN MACHT (t)
Deputy	JEFF HAMMOND (t)		Time Unit Leader	KAREN JONES
Ordering Manager			Equipment Time	GEORGIA BURNS
Supply Unit	DONALD YEE		Equipment Time	
Facilities Unit	DANIEL COMELLA		Equipment time	
Ground Support Unit	ED MCDONALD		Personnel Time	ANGELA SANDOVAL
Communications Unit	MIKE NORMAN		Cost Unit	DONNA SANDERS
Communications Unit	MARTIN JOHNSON / MARK SPANN			
Medical Unit	ALAN SCHUSTER		Prepared by	
Medical Unit	JEFF HATCH			
Medical Unit	JESSE HERNANDEZ			
Security Unit				

Res (H)



Fire Weather Forecast



FORECAST NO: 7
PREDICTION FOR: Tuesday
SHIFT DATE: July 10 2018

INCIDENT: Morris Creek
UNIT: State of New Mexico Cimarron District
SIGNED: *Robert Rickey*

FORECAST ISSUED: 7/9/2018 at 2000

Incident Meteorologist (iMET)

Weather Discussion: On Tuesday, high pressure will lead to another round of warm and dry conditions, with minimum humidity below 30% from around 1300 to 1600 on the ridge. Ridge top winds will blow from the south-southeast, with breezy upslope/upvalley flow within the valley. On Wednesday afternoon, a passing weather disturbance will bring increasing chances for wetting rain as showers and thunderstorms return to the area. Good chances for storms continue on Thursday.

WEATHER FORECAST:

Today:

Weather: Partly cloudy with a slight chance of afternoon showers and thunderstorms.

High Temperatures: 74-78

Min RH: 22-26%

20-FOOT WINDS: Ridge: South-Southeast 6 to 10 mph with gusts to 20 mph, increasing after 1100.
Valley: Upslope/Upvalley 5 to 9 mph with gusts to 18 mph after 1100.

CWR (>=0.10")...10% **LAL...**2 **Haines Index...**3 (Low)

Mixing Height...10,000 ft AGL **Transport Wind...**South 5 mph

Tonight:

Weather: Mostly Clear.

Low Temperatures: 45-49

Max RH: 81-85%

20-FOOT WINDS: Ridge: Northwest 4 to 8 mph.

Valley: Downslope/Downvalley 3 to 6 mph.

CWR (>=0.10")...0% **LAL...**1 **Haines Index...**3 (Low)

Outlook for Wednesday:

Weather: Partly cloudy, becoming mostly cloudy with a chance of showers and thunderstorms in the afternoon and evening. Expect gusty and erratic winds in the vicinity of storms.

High Temperatures: 76-80

Min RH: 27-31%

20-FOOT WINDS: Ridge: South-Southwest 3 to 7 mph with gusts to 15 mph.
Valley: Upslope/Upvalley 5 to 9 mph with gusts to 15 mph.

CWR (>=0.10")...30% **LAL...**3 **Haines Index...**4 (Low)

Mixing Height...9500 ft AGL **Transport Wind...**South-Southwest 7 mph

Extended Outlook for Thursday:

Weather: Mostly cloudy with afternoon showers and thunderstorms likely. Expect gusty and erratic winds in the vicinity of storms.

High Temperatures: 70-74

Min RH: 39-43%

20-FOOT WINDS: Ridge: South winds 3 to 7 mph with gusts to 15 mph.
Valley: Upslope/Upvalley 5 to 9 mph with gusts to 15 mph.

CWR (>=0.10")...60% **LAL...**4 **Haines Index...**3 (Low)

Mixing Height...9000 ft AGL **Transport Wind...**South-Southwest 7 mph

Sunrise...0551

Sunset...2020



← IRAWS near Morris Creek Fire

FIRE BEHAVIOR FORECAST

FORECAST NUMBER: 7	TYPE OF FIRE: Wildland Fire
FIRE NAME: Morris Creek	OPERATIONAL PERIOD: July 10
DATE ISSUED: July 9, 2018	TIME ISSUED: 2030
UNIT: State Of New Mexico, Cimarron District	SIGNED: Typed/printed: Stewart Turner, FBAN

INPUTS

WEATHER SUMMARY: For Specifics Please see the attached Incident Weather Forecast.

WEATHER: Partly cloudy with a slight chance of afternoon showers and thunderstorms

MAX TEMP: 74 to 78° **MIN RH:** 22 to 26%

20 FOOT WINDS: Ridge: South-Southeast 6 to 10 mph with gusts to 20 mph increasing after 1100.
Valley: Upslope/Upvalley 5 to 9 mph with gusts to 18 mph after 1100.

CHANCE OF WETTING RAIN ($\geq 0.10''$): 10% Haines Index: 3 (low). LAL 2

FUELS: The fire is burning through mixed conifer and Ponderosa Pine stands, and grass fuels.

Minimum Fine Dead Fuel Moisture (DFM): 4%, 10 Hour DFM: 7%, 100 Hour DFM: 11%, 1000 Hour DFM 8%

Cimarron RAWs: ERC - 65

OUTPUTS

FIRE BEHAVIOR

GENERAL:

Little change in fire weather or fire behavior. Low to moderate fire behavior will be common along the northern flank. Expect to see some brief active fire behavior along the Rayado Creek drainage. Anticipate smoldering in the larger fuels in the interior of the fire scar. The larger fuels are dry enough to hold fire until they are extinguished or consumed. Gusty winds can accelerate the fire behavior. Wind can overcome humidity increasing short term fire behavior. Rollouts will continue on the north flank. Probability of Ignition: 72% during the heat of the day with the 30% cloud cover.

SPECIFIC:

Division A/Z: Smoldering fire behavior is expected.

Rayado Canyon: Low to moderate fire behavior can be expected with some active fire behavior during uphill runs or torching. Spotting and rollouts will continue to assist the downhill spread. Fire will favor the small sub-ridges and fuels down to the valley bottom.

Initial Attack: Expect to see low to moderate fire behavior with gusty outflow winds. Proper size up is important to estimate potential and fire behavior.

AIR OPERATIONS:

Thunderstorms and outflow wind may hinder air operations.

SAFETY

Gusty winds around thunderstorms may cause erratic fire behavior. Aircraft may not be able to work because of thunderstorm activity. Don't count on aircraft being able to fly to help you out of a bad spot.

1. Incident Name:	3. Branch	Division/Group
MORRIS CREEK		CHARLIE
2. Operational Period:		
Date/Time From:		Date/Time To:
7/10/2018 0600		7/10/2018 2000

4. Operations Personnel					
OPERATIONS CHIEF	DARRELL WILLIS / AARON HULBURD KEN WATKINS / TRUE BROWN (t)			BRANCH DIRECTOR	
DIVISION/GROUP SUPERVISOR	DANIEL CEDENO			AIR OPERATION DIRECTOR	
				AIR ATTACK SUPERVISOR	
MEDICAL GROUND TRANSPORT TIME	Less than 2 hours	2 HOURS TO 4 HOURS	X	MORE THAN 4 HOURS	FIELD MEDICAL OFFICER
			SAFETY OFFICER		ALAN SCHUSTER

5. Resources Assigned this Period								
Type/Kind	Resource Name	RES #	LWD	Leader	# Persons	Drop Off PT./Time	Pick Up PT./Time	
						0600 / UU BAR	2000 / UU BAR	
						0600 / UU BAR	2000 / UU BAR	
						0600 / UU BAR	2000 / UU BAR	
						0600 / UU BAR	2000 / UU BAR	
						0600 / UU BAR	2000 / UU BAR	
						0600 / UU BAR	2000 / UU BAR	
						0600 / UU BAR	2000 / UU BAR	
						0600 / UU BAR	2000 / UU BAR	
						0600 / UU BAR	2000 / UU BAR	
						0600 / UU BAR	2000 / UU BAR	
						0600 / UU BAR	2000 / UU BAR	
						0600 / UU BAR	2000 / UU BAR	
						0600 / UU BAR	2000 / UU BAR	
						0600 / UU BAR	2000 / UU BAR	
						0600 / UU BAR	2000 / UU BAR	
						0600 / UU BAR	2000 / UU BAR	
						0600 / UU BAR	2000 / UU BAR	
						0600 / UU BAR	2000 / UU BAR	
						0600 / UU BAR	2000 / UU BAR	
						0600 / UU BAR	2000 / UU BAR	
						0600 / UU BAR	2000 / UU BAR	
						0600 / UU BAR	2000 / UU BAR	
						0600 / UU BAR	2000 / UU BAR	
						0600 / UU BAR	2000 / UU BAR	
						0600 / UU BAR	2000 / UU BAR	
						0600 / UU BAR	2000 / UU BAR	
						0600 / UU BAR	2000 / UU BAR	

6. Control Operations/Work Assignment		
TASK	PURPOSE	END STATE
CONDUCT INFRASTRUCTURE ASSESSMENTS ON ALL VALUES AT RISK IN UU BAR RANCH. ENTER ALL DATA INTO COLLECTOR. PROVIDE TACTICAL PLANS ON ALL VALUES AT RISK. IMPLEMENT PLANS AS NEEDED.	TO PROTECT VALUES AT RISK IN UU BAR RANCH IN THE EVENT THE FIRE THREATENS THE VALUES AT RISK.	VALUES AT RISK REMAIN INTACT, NO LOSS OF LIFE OR PROPERTY.

7. Special Instructions
 VALUES AT RISK - LA GRULLA COW CAMP, AGUA FRIA CABIN, OJO DE MAIZ, GARCIA COW CAMP, MIDDLE LAKE, LA GRULLA LODGE, APACHE SPRINGS, POWER LINES.

8. Division/Group Communication Summary						
Function	Channel	RX Frequency N/W	RX Tone/NAC	TX Frequency N/W	TX Tone/NAC	Mode
TACTICAL	2	168.2000	136.5	168.2000	136.5	
COMMAND	8	169.5375	136.5	164.7125	136.5	
AIR TO GROUND	14	169.2000		169.2000		

9. Prepared By (Resource Unit Leader)	Approved By (Planning Section Chief)	Date	Time
BILL KUAMOO	RESULT	7/9/2018	1800

1. Incident Name:	3. Branch	Division/Group
MORRIS CREEK		KILO
2. Operational Period:		
Date/Time From: 7/10/2018 0600	Date/Time To: 7/10/2018 2000	

4. Operations Personnel							
OPERATIONS CHIEF	DARRELL WILLIS / AARON HULBURD KEN WATKINS / TRUE BROWN (t)				BRANCH DIRECTOR		
DIVISION/GROUP SUPERVISOR	JOSH CABRAL / STEVEN GRIEGO (t)				AIR OPERATION DIRECTOR		
					AIR ATTACK SUPERVISOR		
MEDICAL GROUND TRANSPORT TIME	Less than hours	2	2 HOURS TO 4 HOURS	X	MORE THAN 4 HOURS	FIELD MEDICAL OFFICER	
						SAFETY OFFICER	
						ALANNA ENGLISH ALAN SCHUSTER CLINT REMINGTON	

5. Resources Assigned this Period							
Type/Kind	Resource Name	RES #	LWD	Leader	# Persons	Drop Off PT./Time	Pick Up PT./Time
T2	APACHE KID	O-66	7/18	JAMES BARRON	9	0600 / UU BAR	2000 / UU BAR
T2IA	NAVAJO SCOUTS	C-2	7/14	BRIAN BILLIE	23	0600 / UU BAR	2000 / UU BAR
T6	E 2574	E-60		JAMES SANCHEZ	4	0600 / UU BAR	2000 / UU BAR
	AMBO1	E-7	7/18	APODACA / GOETTEE	2	0600 / UU BAR	2000 / UU BAR
	REMS	O-97	7/21	SANTA FE - ANSTINE	4	0600 / UU BAR	2000 / UU BAR
	TFLD	C-1.2	7/12	MYRON SHECHE	1	0600 / UU BAR	2000 / UU BAR
	TFLD	O-68	7/15	JAKE GUADIANA (t)	1	0600 / UU BAR	2000 / UU BAR
						0600 / UU BAR	2000 / UU BAR
						0600 / UU BAR	2000 / UU BAR
						0600 / UU BAR	2000 / UU BAR
						0600 / UU BAR	2000 / UU BAR
						0600 / UU BAR	2000 / UU BAR
						0600 / UU BAR	2000 / UU BAR
						0600 / UU BAR	2000 / UU BAR
						0600 / UU BAR	2000 / UU BAR
						0600 / UU BAR	2000 / UU BAR
						0600 / UU BAR	2000 / UU BAR
						0600 / UU BAR	2000 / UU BAR
						0600 / UU BAR	2000 / UU BAR
						0600 / UU BAR	2000 / UU BAR
						0600 / UU BAR	2000 / UU BAR
						0600 / UU BAR	2000 / UU BAR
						0600 / UU BAR	2000 / UU BAR
						0600 / UU BAR	2000 / UU BAR

6. Control Operations/Work Assignment		
TASK	PURPOSE	END STATE
CONDUCT INFRASTRUCTURE ASSESSMENTS ON ALL VALUES AT RISK IN DIVISION KILO. ENTER ALL DATA INTO COLLECTOR. PROVIDE TACTICAL PLANS ON ALL VALUES AT RISK. IMPLEMENT PLANS AS NEEDED.	TO PROTECT VALUES AT RISK IN DIVISION KILO IN THE EVENT THE FIRE THREATENS THE VALUES AT RISK.	VALUES AT RISK REMAIN INTACT, NO LOSS OF LIFE OR PROPERTY.

7. Special Instructions
 VALUES AT RISK - FISH CAMP, BEAUBIEN, PHILLIPS JUNCTION COMMISSARY, CROOKED CREEK, BONITO COW CAMP, CLEAR CREEK.

8. Division/Group Communication Summary						
Function	Channel	RX Frequency N/W	RX Tone/NAC	TX Frequency N/W	TX Tone/NAC	Mode
TACTICAL	3	168.6000	136.5	168.6000	136.5	
COMMAND	9	169.9875	136.5	163.0375	136.5	
AIR TO GROUND	14	169.2000		169.2000		

9. Prepared By (Resource Unit Leader) BILL KUAMOO	Approved By (Planning Section Chief) <i>[Signature]</i>	Date 7/9/2018	Time 1800
---	---	-------------------------	---------------------

Result *[Signature]* *PK2(t)*

1. Incident Name: <h1 style="text-align: center;">MORRIS CREEK</h1>	3. Branch Division/Group <h1 style="text-align: center;">MIKE</h1>
2. Operational Period: Date/Time From: 7/10/2018 0600 Date/Time To: 7/10/2018 2000	

4. Operations Personnel							
OPERATIONS CHIEF	DARRELL WILLIS / AARON HULBURD KEN WATKINS / TRUE BROWN (t)				BRANCH DIRECTOR		
DIVISION/GROUP SUPERVISOR	CORY CARLSON / KEITH BORGHOFF (t)				AIR OPERATION DIRECTOR		ALANNA ENGLISH ALAN SCHUSTER
MEDICAL GROUND TRANSPORT TIME	Less than hours	2 X	2 HOURS TO 4 HOURS	MORE THAN 4 HOURS	AIR ATTACK SUPERVISOR		
					FIELD MEDICAL OFFICER		
					SAFETY OFFICER		

5. Resources Assigned this Period							
Type/Kind	Resource Name	RES #	LWD	Leader	# Persons	Drop Off PT./Time	Pick Up PT./Time
EMPF		E-83	7/22	MEDIC TEAM 5	2	0600 / UU BAR	2000 / UU BAR
						0600 / UU BAR	2000 / UU BAR
						0600 / UU BAR	2000 / UU BAR
						0600 / UU BAR	2000 / UU BAR
						0600 / UU BAR	2000 / UU BAR
						0600 / UU BAR	2000 / UU BAR
						0600 / UU BAR	2000 / UU BAR
						0600 / UU BAR	2000 / UU BAR
						0600 / UU BAR	2000 / UU BAR
						0600 / UU BAR	2000 / UU BAR
						0600 / UU BAR	2000 / UU BAR
						0600 / UU BAR	2000 / UU BAR
						0600 / UU BAR	2000 / UU BAR
						0600 / UU BAR	2000 / UU BAR
						0600 / UU BAR	2000 / UU BAR
						0600 / UU BAR	2000 / UU BAR
						0600 / UU BAR	2000 / UU BAR
						0600 / UU BAR	2000 / UU BAR
						0600 / UU BAR	2000 / UU BAR
						0600 / UU BAR	2000 / UU BAR
						0600 / UU BAR	2000 / UU BAR
						0600 / UU BAR	2000 / UU BAR
						0600 / UU BAR	2000 / UU BAR
						0600 / UU BAR	2000 / UU BAR
						0600 / UU BAR	2000 / UU BAR
						0600 / UU BAR	2000 / UU BAR

6. Control Operations/Work Assignment		
TASK	PURPOSE	END STATE
CONDUCT INFRASTRUCTURE ASSESSMENTS ON ALL VALUES AT RISK IN DIVISION MIKE. ENTER ALL DATA INTO COLLECTOR. PROVIDE TACTICAL PLANS ON ALL VALUES AT RISK. IMPLEMENT PLANS AS NEEDED.	TO PROTECT VALUES AT RISK IN DIVISION MIKE IN THE EVENT THE FIRE THREATENS THE VALUES AT RISK.	VALUES AT RISK REMAIN INTACT, NO LOSS OF LIFE OR PROPERTY.

7. Special Instructions
 VALUES AT RISK - CRATER LAKE, MINERS PARK, BLACK MOUNTAIN, STOCKADE, LOVERS LEAP TURNAROUND, ROCKY MOUNTAIN SCOUT CAMP, COPE COURSE, STOCKADE RIDGE CAMP, TOOTH IN TIME, TOOTH RIDGE CAMP.

8. Division/Group Communication Summary						
Function	Channel	RX Frequency N/W	RX Tone/NAC	TX Frequency N/W	TX Tone/NAC	Mode
TACTICAL	4	166.7250	136.5	166.7250	136.5	
COMMAND	9	169.9875	136.5	163.0375	136.5	
AIR TO GROUND	14	169.2000		169.2000		

9. Prepared By (Resource Unit Leader) BILL KUAMOO	Approved By (Planning Section Chief) PSC24	Date 7/9/2018	Time 1800
---	--	-------------------------	---------------------

1. Incident Name:		3. Branch		Division/Group	
MORRIS CREEK				PAPA	
2. Operational Period:					
Date/Time From:		Date/Time To:			
7/10/2018 0600		7/10/2018 2000			

4. Operations Personnel							
OPERATIONS CHIEF	DARRELL WILLIS / AARON HULBURD KEN WATKINS / TRUE BROWN (t)			BRANCH DIRECTOR			
DIVISION/GROUP SUPERVISOR	B. DAVIDSON / M. ROSENGARTAN (t)			AIR OPERATION DIRECTOR			
				AIR ATTACK SUPERVISOR			
MEDICAL GROUND TRANSPORT TIME	Less than hours	2	X	2 HOURS TO 4 HOURS	MORE THAN 4 HOURS	FIELD MEDICAL OFFICER	ALANNA ENGLISH ALAN SCHUSTER
						SAFETY OFFICER	

5. Resources Assigned this Period							
Type/Kind	Resource Name	RES #	LWD	Leader	# Persons	Drop Off PT./Time	Pick Up PT./Time
T3	SAN JUAN COUNTY B-12	E-44	7/17	CHAD VECELLIO	3	0600 / UU BAR	2000 / UU BAR
T6	ANTHIS FAMILY ENT	E-38	7/18	JOHN HOELLERICH	3	0600 / UU BAR	2000 / UU BAR
DOZ1	BLACKSTEN	E-69	7/15	Z. BLACKSTEN	1	0600 / UU BAR	2000 / UU BAR
WT2T	ST. JOHNS FIRE 1976	E-46	7/17	ROBERT VALLEJOS	2	0600 / UU BAR	2000 / UU BAR
	EMPF	E-10	7/19	MEDIC TEAM 1	2	0600 / UU BAR	2000 / UU BAR
						0600 / UU BAR	2000 / UU BAR
						0600 / UU BAR	2000 / UU BAR
						0600 / UU BAR	2000 / UU BAR
						0600 / UU BAR	2000 / UU BAR
						0600 / UU BAR	2000 / UU BAR
						0600 / UU BAR	2000 / UU BAR
						0600 / UU BAR	2000 / UU BAR
						0600 / UU BAR	2000 / UU BAR
						0600 / UU BAR	2000 / UU BAR
						0600 / UU BAR	2000 / UU BAR
						0600 / UU BAR	2000 / UU BAR
						0600 / UU BAR	2000 / UU BAR
						0600 / UU BAR	2000 / UU BAR
						0600 / UU BAR	2000 / UU BAR
						0600 / UU BAR	2000 / UU BAR
						0600 / UU BAR	2000 / UU BAR
						0600 / UU BAR	2000 / UU BAR

6. Control Operations/Work Assignment		
TASK	PURPOSE	END STATE
HOLD AND SECURE FIRELINE NORTH OF MORRIS CREEK ROAD TO THE RIM'S EDGE.	MINIMIZE FIRE SPREAD TO THE NORTH / EAST AND TO LESSEN IMPACT TO WATERSHED AND VALUES AT RISK.	FIRE CONTAINED AS SAFELY AND EFFICIENTLY AS POSSIBLE AND NEGATIVE IMPACTS FROM SUPPRESSION EFFORTS AND FIRE ARE MINIMIZED.
SCOUT DIVISION AND IDENTIFY COTROL LINES TO MINIMIZE FIRE SPREAD TO THE EAST		

7. Special Instructions
 IDENTIFY REHAB NEEDS AND IMPLEMENT AS NEEDED.
 VALUES AT RISK - POWER LINES.

8. Division/Group Communication Summary						
Function	Channel	RX Frequency N/W	RX Tone/NAC	TX Frequency N/W	TX Tone/NAC	Mode
TACTICAL	6	168.2500	136.5	168.2500	136.5	
COMMAND	7	170.0000	136.5	166.6750	136.5	
AIR TO GROUND	14	169.2000		169.2000		

9. Prepared By (Resource Unit Leader) BILL KUAMOO	Approved By (Planning Section Chief) PSC2(t)	Date 7/9/2018	Time 1800
---	--	-------------------------	---------------------

1. Incident Name:		3. Branch		Division/Group	
MORRIS CREEK				IA GROUP	
2. Operational Period:					
Date/Time From:		Date/Time To:			
7/10/2018 0600		7/10/2018 2000			

4. Operations Personnel					
OPERATIONS CHIEF		DARRELL WILLIS / AARON HULBURD KEN WATKINS / TRUE BROWN (t)			BRANCH DIRECTOR
DIVISION/GROUP SUPERVISOR		MARIO OROZCO			AIR OPERATION DIRECTOR
					AIR ATTACK SUPERVISOR
MEDICAL GROUND TRANSPORT TIME		Less than 2 hours	2 HOURS TO 4 HOURS	X	MORE THAN 4 HOURS
					FIELD MEDICAL OFFICER
					SAFETY OFFICER
					ALANNA ENGLISH
					ALAN SCHUSTER

5. Resources Assigned this Period							
Type/Kind	Resource Name	RES #	LWD	Leader	# Persons	Drop Off PT./Time	Pick Up PT./Time
	TFLD	O-72	7/16	JUSTIN PERKINS	1	0600 / UU BAR	2000 / UU BAR
	TFLD	O-50	7/18	BRANDON HOWARD (t)	1	0600 / UU BAR	2000 / UU BAR
						0600 / UU BAR	2000 / UU BAR
						0600 / UU BAR	2000 / UU BAR
						0600 / UU BAR	2000 / UU BAR
						0600 / UU BAR	2000 / UU BAR
						0600 / UU BAR	2000 / UU BAR
						0600 / UU BAR	2000 / UU BAR
						0600 / UU BAR	2000 / UU BAR
						0600 / UU BAR	2000 / UU BAR
						0600 / UU BAR	2000 / UU BAR
						0600 / UU BAR	2000 / UU BAR
						0600 / UU BAR	2000 / UU BAR
						0600 / UU BAR	2000 / UU BAR
						0600 / UU BAR	2000 / UU BAR
						0600 / UU BAR	2000 / UU BAR
						0600 / UU BAR	2000 / UU BAR
						0600 / UU BAR	2000 / UU BAR
						0600 / UU BAR	2000 / UU BAR
						0600 / UU BAR	2000 / UU BAR
						0600 / UU BAR	2000 / UU BAR
						0600 / UU BAR	2000 / UU BAR
						0600 / UU BAR	2000 / UU BAR
						0600 / UU BAR	2000 / UU BAR
						0600 / UU BAR	2000 / UU BAR
						0600 / UU BAR	2000 / UU BAR
						0600 / UU BAR	2000 / UU BAR

6. Control Operations/Work Assignment		
TASK	PURPOSE	END STATE
TO RESPOND TO ANY NEW START UNDER THE TFR. ASSIST THE CIMARRON DISTRICT AS REQUESTED ON NEW STARTS.	TO PROVIDE RESOURCES AND SUPERVISION ON STATE PROTECTED LANDS, AND TO MINIMIZE DAMAGE TO RESOURCES AND VALUES AT RISK.	NEW STARTS ARE CONTAINED, AND RESOURCE DAMAGE IS MINIMIZED.

7. Special Instructions

8. Division/Group Communication Summary						
Function	Channel	RX Frequency N/W	RX Tone/NAC	TX Frequency N/W	TX Tone/NAC	Mode
TACTICAL	11	159.2250		159.2250		
COMMAND	10	159.4200	156.7	159.4200	156.7	
AIR TO GROUND	14	169.2000		169.2000		

9. Prepared By (Resource Unit Leader)		Approved By (Planning Section Chief)		Date	Time
 BILL KUAMOO		 PSC2(t)		7/9/2018	1800

1. INCIDENT NAME: Morris Creek Fire 2. OPERATIONAL PERIOD DATE: Wednesday 7-10-18
 START TIME: 0600 END TIME: 2030 SUNRISE: 0552 SUNSETS: 2017

3. REMARKS (Safety Notes, Hazards, Air Operations Special Equipment, etc.):
 • Advise Helicopters/Helibase/Air Attack immediately of any unidentified aircraft/Drones within the fire area/TFR
 • Keep track of gallons taken per dip site

4. READY ALERT AIRCRAFT:
H-0VR (Fire A/C)
 Medivac - refer to medical plan. Taos Care flight or Lobo 55 (A-9)

5. TFR #8/5611 5-NM 13,000 msl
 # Avail / Type / Make-Model / FAA N# / Base(s)
1GB – English

6. PERSONNEL
 AOBDD: Dan Sullivan Phone 928-925-2439
 Morris Creek Helibase (505)235-4351
 ATGS: Alanna English 928-699-0935
 ATGS: Dispatch Aircraft Desk (Taos) 575-758-6208

7. FREQUENCIES	AM	FM
Air / Air (TFR) Primary	123.8250 (A-7)	
Air/Air Secondary	118.9750 (A-20)	
A/G -1	169.2000 (A-8)	
A/G -2	167.9875 (A-21)	
Deck		N/A
Air-Medical Helicopters	VMED 28	155.3400 TX Tone 156.7
Air Guard		168.625 TX/RX Tone 110.9

TFR MAP
 H-10 36 20.504 x 105 03.658 Type 1
 H-20 36 20.726 x 105 03.969 Type 3
 H-30 36 21.549 x 105 04.280 Type 2 (Rimrock)
 H-33 36 22.688 x 105 3.985 Type 3
 H-45 36 21.180 x 105 02.226 Type 3
 H-50 36 21.527 x 105 02.160 Type 3
 H-55 36 21.679 x 105 01.075 Type 3
 H-60 36 22.124 x 105 01.430 Type 2
 H-65 36 22.191 x 105 01.321 Type 2
 H-70 36 22.532 x 104 59.821 Type 1
 H-80 36 20.875 x 104 56.192 Type 2

See OPS MAP FOR Additional H.S.

9. Helicopters (Use Additional Sheets as Necessary)

FAA N#	TY	MAKE/MODEL	BASE	AVAIL	START	REMARKS
1KA (A-2)	1	K-Max	Angel Fire			JJ Stone 530-251-3078
3FH (A-12)	1	S-70 FireHawk	Angel Fire			Morgan Meserth (208) 861-2346
0VR (A-29)	3	AS350 B3	Angle Fire			Joe Scholz 505-270-5525

MISC. INFORMATION

A/C orders DIVS to Ops, or through Air Attack if up.
 H-78 PSD HS-36 22.623 x 104 57.249

Approved By: Dan Sullivan AOBDD

Incident Radio Communications Plan (ICS 205) Day Operations

Incident Name: Morris Creek Fire					Operational Period: 7/10/2018
Channel	Function	Frequency	Narrowband	Assignment & Remarks	
1	TAC 1	RX&TX168.0500 rx&tx tone: 136.5	Narrow	Div A/Z	
2	TAC 2	RX&TX168.2000 rx&tx tone: 136.5	Narrow	Div C	
3	TAC 3	RX&TX168.6000 rx&tx tone: 136.5	Narrow	Div K	
4	TAC 4	RX&TX166.7250 rx&tx tone: 136.5	Narrow	Div M	
5	TAC 5	RX&TX166.7750 rx&tx tone: 136.5	Narrow	DIV O	
6	TAC 6	RX&TX168.2500 rx&tx tone 136.5	Narrow	DIV P	
7	CMD 7	RX:170.000 TX:166.6750 tx&rx tone: 136.5	Narrow	Command on Rayado Mesa	
8	CMD 8	RX:169.5375 TX:164.7125 tx&rx tone: 136.5	Narrow	Command on Angel Fire	
9	CMD 9	RX:169.9875 TX:163.0375 tx&rx tone: 136.5	Narrow	Command on Green Mtn	
10	NMSF FIRE	RX&TX159.4200 tx tone: 156.7	Narrow	Cimaron District Office	
11	NMSF TAC	RX&TX159.2250	Narrow	I/A	
12	ST FIRE	RX&TX 154.3100	Narrow	Local Mutual Aid	
13	VMED28	RX &TX155.3400 tx tone 156.7	Narrow	Medical Emergency	
14	A/G PRI	RX&TX169.2000	Narrow	Primary Air to Ground	
15	A/G SEC	RX&TX167.9875	Narrow	Secondary Air to Ground	
16	Air Guard	RX&TX168.625 tx tone: 110.9	Narrow	Emergency Use only	

Prepared by: Martin Johns COML *Martin Johns*

Note: CMD 7, CMD 8 and CMD 9 are all linked together. If one doesn't work, try the another.

HEALTH AND SAFETY MESSAGE

SAFETY starts with *YOU*

We are ALL accountable for SAFE behaviors

INCIDENT: **Morris Creek Fire**

DATE: **July 10, 2018** Operational Period: **0600-2000**

Major Hazards and Risks

**DRIVING SNAGS STRUCTURE PREP
AVIATION HYDRATION ATV/UTV UTILIZATION**

Narrative:

L.C.E.S is built on two basic guidelines:

1. Before safety is threatened, each firefighter must be informed on how the *L.C.E.S* system will be used.
2. The *L.C.E.S* system must be continuously reevaluated as fire conditions change.

- **Conduct quality briefing on the line before tactical engagement, so *everyone* KNOWS the plan.**

Medivac Procedures- Take time to review the Medical Plan and Medical Incident Report, know exactly how to proceed before the injury occurs. Know your location and where the closest landing zone is.

Fire Order of the Day

Base all actions on current and expected behavior of the fire

Watch Out Situation of the Day



18. TAKING A NAP NEAR THE FIRELINE

Risk Management



Lookouts **C**ommunications

Escape routes **S**afety Zones

Incident Safety Officers: William Kornrumpf, and the rest of your Safety Team



HRSP WORD SEARCH – STRANGE WORDS

Y N U W C V S Y B N F U G V N O I T A E D I U I M S C A
 C V J F M K G N I K O R A M E L L A M F S R H C U R I D
 P D E T A L U B O B M O C S I D V D G L J H H O Y O E E
 D L Q P A N G L O S S I A N N Z M W A O V H U P N U S F
 A N O I L L U G E D R E B B U L S N D C N L T A N R U E
 P O O D L E F A K E R L Z Y R Y I G S C F O T F S E R N
 K U W T A T T E R D E M A L I O N E T I M E I H E K R E
 C I T U E I A M H Z P Y P C D I I Z L N M Q Q I S N U S
 R F L I I Z O X U E O E H P T T F L E A O Q E P Q A S T
 T C C Q N N J O T N D T G A I O E S E U T B R P U H U R
 C R K O F T N R A A H J V S S M I D F C W W Y Q I S S A
 R S Z X E D I G T O K R O I Y A U O R I N H T Z P M P T
 V J P R O C T N N O E L S B P T A A C N F U H P E I E E
 M W C H H F O I N N L P O T I R N X O I Y J R Z D R L S
 N Z H O Y M C J E A E R N P H T O T A H J C I A A C U Y
 L T R M O G Z Q C K B P R M A P S P E I X R S R L S N Z
 A Q E D R Z M L S O K U U S D O X E R L M F M E I X K Y
 R G O R P A A O R F T A L S I O D Q S I S E A B A S I G
 H R W X M I L Y M L C N K A I S P E U P O I L A N F N Y
 C B L E H A G U A A T R A I T L E A R I M C N N T D G F
 L O U C H M G R C R N E E Y S I L M L L D I E E I R V W
 U J S P U G O A U S T O P N O T O A T I R N L P C W D F
 P I M S L M N N N A U I M P E T O N N F N A U A T U T D
 E O D R B B C A V T Y P Z E I L A C E I L D C N P I R R
 S Y T Q E I U I P Z O B E H T R L H R C M B R K C E O E
 T R Q I B T T Y L S R I O R O E F A C A C O F O X A X N
 U R T L R S X F D L Q O A J C Q R I T H C A U J M L Z B
 X F E H E O C O E T G V B R E H M Y H E E Y I S X E B M

- | | | | |
|---------------------------|---------------------|----------------|------------------|
| BORBORYGMUS | FRIPPET | PALINDROME | SLUBBERDEGULLION |
| CHATOYANT | FUG | PANGLOSSIAN | SPANGHEW |
| CHTHONIC | IDEATION | PETRICHOR | SPELUNKING |
| CRENELLATE | ISCHIAL CALLOSITIES | POODLE FAKER | SPHYGMOMANOMETER |
| CREPUSCULAR | KAKISTOCRACY | PROPRIOCEPTION | SUSURRUS |
| CRYPTOMNESIA | MAIEUTIC | PUSILLANIMOUS | SYZYGY |
| DEFENESTRATE | MALLEMAROKING | QUIDNUNC | TATTERDEMALION |
| DISCOMBOBULATED | MELLIFLUOUS | RODOMONTADE | TERMAGANT |
| ENERVATING | METANOIA | RUNCIBLE | TINTINNABULATION |
| ERYTHRISMAL | MORAL TURPITUDE | SCRIMSHANKER | TMESIS |
| ESTIVATE | OMPHALOSKEPSIS | SEPULCHRAL | URT |
| FLOCCINAUCINIHIPIPILIFICA | OXTER | SESQUIPEDALIAN | ZAREBA |
| | PALIMPSEST | SINECURE | |

EMNRD NEW MEXICO STATE FORESTRY DIVISION GUIDELINES FOR FOREST FIRELINE REHABILITATION ON STATE AND PRIVATE LANDS

1. HAZARD TREES:

Remove downed timber or other obstructions (such as rocks) from roads, which may create post-fire safety hazards. Remove snags that may fall across firelines, roads, or onto structures near the fireline because of line construction or burnout. Buck any snags or live trees burned at bases removed due to posing a safety hazard into smaller four to six-foot sections to reduce the risk of attracting bark beetles and to aid in accelerating the decay process.

2. REDUCTION OF EROSION ON HAND LINES AND DOZER LINES:

Construct water bars on hand lines and dozer lines; this includes all interior and perimeter firelines constructed during fire suppression activities. Construct water bars diagonally (at 30 to 35 degrees) not perpendicular, to the suppression lines to divert runoff. Construct drains such that water flows into un-burned areas wherever possible. On steeper slopes water bars may need to be constructed in an alternating pattern to prevent additional erosion from runoff. Insure that water bars have open outlets to avoid restricting water flow. Mitigate or remove any downslope berms/dirt piles, resulting from blading operations, which may exist along the interior and the perimeter of firelines to avoid restricting water flow. Where possible, construct water bars where rocks, vegetation, or debris are below the outlet to dissipate water. Do not construct water bars to divert runoff directly into a stream course.

The following guidelines are to be used in the spacing of water bar construction:

Slope	Maximum Interval
0.0 – 4.9% slope	150 feet
5.0 – 9.9% slope	130 feet
10.0 – 14.9% slope	75 feet
15.0 – 40.0% slope	50 feet
40% slope and greater	20 feet

When dealing with multi-ownership, it may be easier to agree on one guideline for all water bar construction than trying to identify different landowners.

3. SEEDING:

Initiate seeding of suppression lines, safety zones, water bars, and other areas of disturbance the suppression effort created as soon as possible. The seed mix should be certified weed free and contain native species whenever possible. The seed mix will contain less than 0.6 percent weed content and no noxious weeds.

As an alternative to seed, hay/straw mulch can also be used on suppression lines; however, hay/straw mulch must be certified as noxious weed free.

4. SLASH:

Drop and buck all hangs-ups (pushed over trees) along dozer lines into four to six foot sections. Lop and scatter slash from fire line construction to less than three feet in height. Scatter slash back over the fire line. Do not place slash directly in contact with residual trees. This may only be possible on interior firelines. Remove slash in intermittent and perennial watercourses to above the high-water mark.

5. ROADS:

- a. Roads on state and private lands leading to Drop Points may need to be restored.
- b. Stabilize Drop Points, constructed turnarounds, helispots, helibases, and other disturbances. Refer to items 2, 3, and 4 above.
- c. Re-establish all drainage structures and bridges (culverts, cross drains, ditches, rolling dips, down drains, berms*) to pre-fire or functional conditions. Knock down or open any berms created to properly drain water and prevent channeling. Rolling dips should have open, free flowing, outlets that do not drain directly into water courses.
*Berms: a ridge of soil and debris along the edge of a fireline resulting from line construction.
- d. Replace damaged drains or drain aprons.
- e. Where needed, re-grade after suppression activities; stabilize and/or control erosion caused by road activity or upslope suppression activities.

6. SAFETY ZONES:

Treat safety zone construction by removing hang-ups and lopping slash to less than three feet in height. Treat slash and berms created during construction of safety zones. Remove berm and spread back into safety zone. Place slash on safety zone and treat as above in items 3 and 4.

7. DEBRIS CLEAN UP:

Collect and remove all trash and flagging from within fire area, staging areas, drop points, helispots, and helibase locations.

8. OTHER STRUCTURES:

Repair or replace all structures damaged during fireline construction activities (i.e. fences, gates, cattle guards, culverts, etc.).

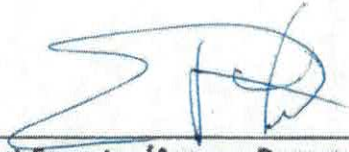
9. FIRELINE REHABILITATION INSPECTIONS:

- a. As soon as it is safe to do so, appointed Forestry Division personnel shall conduct a pre-inspection of the hand line and dozer line to identify areas of rehabilitation concern.

- b. As soon as it is safe to do so, after rehabilitation has been completed by fire management personnel, appointed Forestry Division personnel shall verify that all rehabilitation has been executed in accordance with the above guidelines.

10. **Special Considerations:**

Additional rehabilitation may be required as the incident develops.



District Forester/Agency Representative

7/08/18

Date

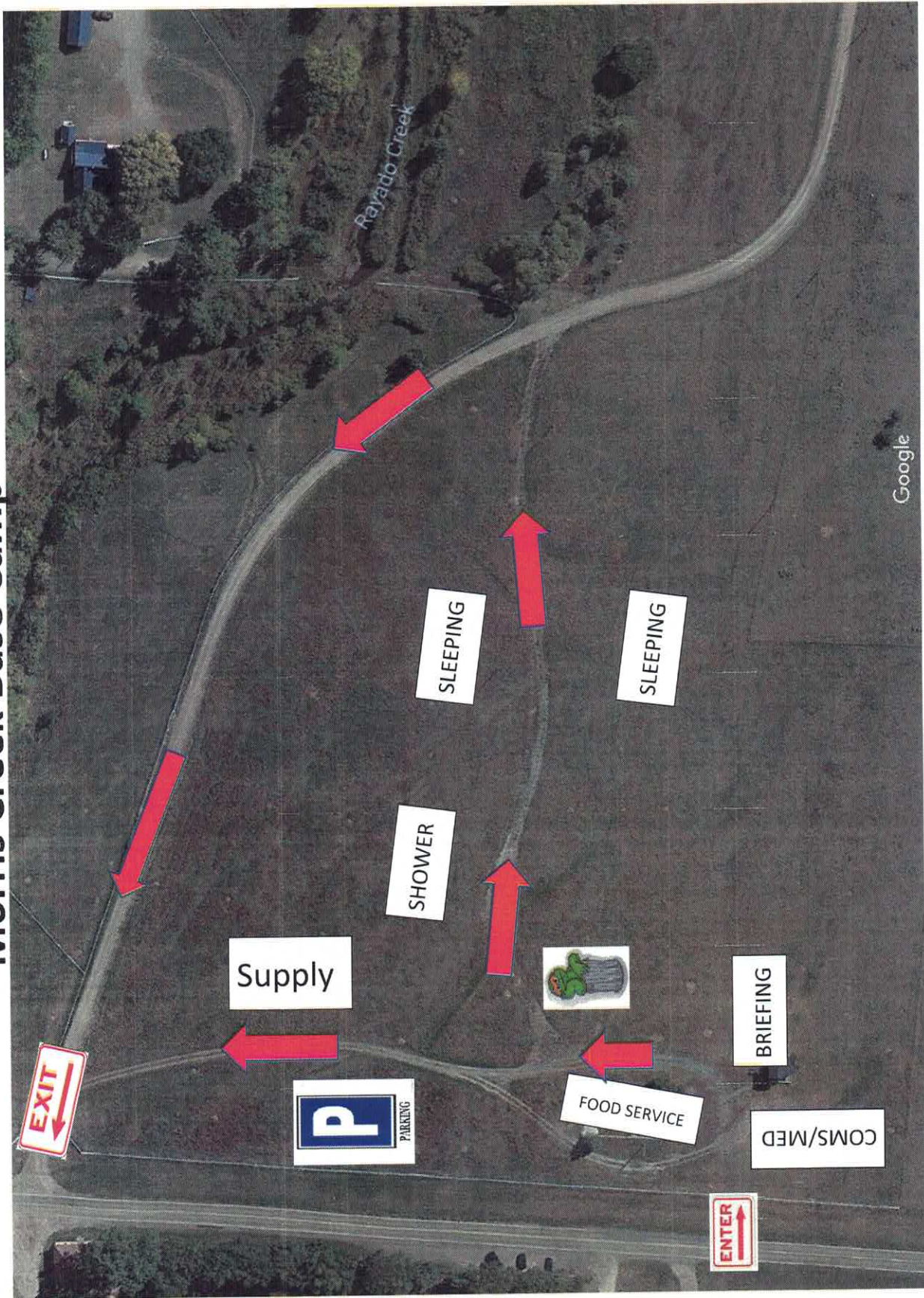


Incident Commander

7-7-18

Date

Morris Creek Base Camp



**INCIDENT
LINE SUPPLY ORDER FORM
(OSC/Division Supervisors Only)**

Date & Time Order Was Placed	Order Reference # (DIV + #)		Location for Delivery (Division/LZ/DP/Lat. Long)
DATE:		GROUND SUPPORT	
TIME:		HELICOPTER	
		TO BE PICKED UP BY @	

	DATE NEEDED:	TIME NEEDED:
	Order received in COMMUNICATIONS by: Name:	Time:
	Order received in SUPPLY by: Name:	Time:
	Order received in GROUND SUPPORT by: Name:	Time:
	Order received in HELIBASE by: Name:	Time:
	Order delivered/shipped to final location by: Name:	Time:

#	ITEM	QUANTITY	SHIPPED	PENDING	#	ITEM	QUANTITY	SHIPPED	PENDING
1.	Breakfast – Meals				31.	Lightweight Pump Kit			
2.	Lunch – Meals				32.	Hose – 1 ½” ft.			
3.	Dinner – Meals				33.	Hose – 1” ft.			
4.	MRE’s (# of Cases) 12/cs				34.	Hose – ¾” ft.			
5.	Cubies of Water – ea.				35.	Reducer – 1 ½” x 1”			
6.	Bottled Water - Case				36.	Reducer – 1” x ¾”			
7.	Gatorade – Case				37.	Gated “Y” – 1 ½” ea.			
8.	Batteries – AA/box 24 ea.				38.	Gated “Y” – 1” ea.			
9.	Batteries – AAA/C/D ea.				39.	Shut off valve ¾” ea.			
10.	Fuel – Unleaded – Gallons				40.	In – Line Tee 1 ½” x 1” ea.			
11.	Fuel – Diesel – Gallons				41.	Nozzle – 1 ½” ea.			
12.	Fuel – Drip Torch (60/40 mix) gals.				42.	Nozzle – 1” ea.			
13.	Bar Oil – QT’s/Gallons				43.	Nozzle ¾”			
14.	2 cycle oil – (1 per gallon)				44.	First Aid Kit – 20 man ea.			
15.	Sleeping Bags – 25 degree				45.	Chainsaw Kit – ea.			
16.	Sleeping Bags – 40 degree				46.	DIV Pump Kit (next page) ea.			
17.	Plastic – roll/sq. ft.				47.	DIV Hose lay Kit (next page) ea.			
18.	Parachute Cord – roll/ft.				48.	Line Spike Hygiene Kit (next page) ea.			
19.	Shovels – ea.								
20.	Pulaski – ea.					MISC. Please list below			
21.	Combi – ea.								
22.	McLeod – ea.								
23.	Fussee – case								
24.	Drip Torch – Full/Empty								
25.	Backpack Pump – Full/Empty								
26.	Slingable Blivet – Suppression								
27.	Slingable Blivet – Drinking					Accountable Property #'s			
28.	Folding Tank 1000/1500 gals								
29.	Pumpkin 1500/3000/6000 gals								
30.	Mark III Pump Kit								

Team Ordering/ Timeline Process:

0600 – Morning Briefing, start of crew time.

1500 – DIVS to have next days resource order ready for OPS.

- Original food orders must be placed 6-hours, plus drive time, prior to actual feeding time.
- Last call to change food orders is 4-hours, plus drive time.
- All crew level orders will be placed through DIVS.
- DIVS will place all orders through Communications Unit.
- All orders will be tracked using the process found on the front of form.

Division Pump Kit			Division Hose Lay Kit		
Item	NFES#	Quantity	Item	NFES#	Quantity
Hose 1½"	1239	1000'	Hose 1½"	1239	3500'
Hose 1"	1238	1000'	Hose 1"	1238	1700'
Hose, ¾"	1016	500'	Hose, ¾"	1016	3000'
Tee, 1½" – 1"	731	4	Tee, 1½" – 1"	731	15
Nozzle, 1"	138	4	Nozzle, 1"	138	15
Nozzle, ¾"	136	4	Nozzle, ¾"	136	30
1½" Gated "Y"	231	4	Valve, 1½" Gated "Y"	231	5
1" Gated "Y"	2059	4	Valve, 1" Gated "Y"	2059	2
¾" Gated "Y"	272	4	Valve ¾" Gated "Y"	272	30
Reducers, 1½" – 1"	0010	4	Shut off valve ¾"	738	20
Reducers, 1" – ¾"	733	4	Reducers, 1½" – 1"	0010	10
Double Female 1"	710	1	Reducers, 1" – ¾"	733	10
Double Female 1½"	857	1	Double Female 1"	710	1
Fuel 5 Gal. To Match Pump	606	2	Double Female 1½"	857	1
2 Cycle Oil	341	2	Bag, Slingable Water	437	6

Pick One of the Pumps Below

Pump, Lightweight	670	1			
Pump Mark III	870	1			

Line Spike Hygiene Kit			Line Spike Hygiene Kit (continued)		
Trauma shears		1 ea	Latex or Nitrile gloves		1 box
Moleskin		3 ft	Benadryl		1 box
Gold Bond Blue Powder		5 ea	Spenco 2nd skin		3 boxes
Gold Bond Green Powder		2 ea	Ibuprofen (Advil)		25 ea
Gold Bond Yellow Powder		5 ea	Aminofen (Tylenol)		25 ea
Tolfanate Foot Powder		3 ea	Antiseptic Wipes		20 ea
Vet Wrap (Koflex)		6 ea	Sting Relief		20 ea
Throat Lozenges		40 ea	Baby Wipes		1 box
Hand Sanitizer		20 ea	Bactracin		10 ea
Bug Repellent		3 ea	Chap Stick		10 ea
Sun Screen		5 ea	Ziplock Bags		10 ea
Eye Wash		5 ea	22		

SAW PARTS ORDER FORM

CREW NAME	CREW #
------------------	---------------

MAKE:	STIHL	HUSQVARNA
--------------	--------------	------------------

MODEL:	CIRCLE ONE
---------------	-------------------

DATE NEEDED:	TIME NEEDED:
---------------------	---------------------

QUANTITY:	BAR:
	20" 22" 24" 28" 30" 32" 36" OTHER _____
	CIRCLE ONE

QUANTITY:	BAR CHAIN:
	DRIVERS: 72 84 91 105 OTHER _____
	CIRCLE ONE

PITCH:	1/4" 3/8" .325" .404" 1/2"
	CIRCLE ONE

GUAGE:	.043 .050 .058 .063
	CIRCLE ONE

TOOTH LAYOUT:	FULL SEMI SKIP FULL SKIP
	CIRCLE ONE

TOOTH CUT:	CHISEL MICRO-CHISEL SEMI CHISEL CHAMFER CHISEL
	CIRCLE ONE

QUANTITY	ITEM	MAKE/MODEL OR PART NUMBER
	AIR FILTER	
	FUEL FILTER	
	E-CLIP	
	SPROCKET (# TEETH)	
	NEEDLE BEARING	
	BAR NUT	
	SPARK PLUG	
	BEARING GREASE	
	OTHER	

DIVISION/GROUP SUPERVISOR SIGNATURE:	DATE:
---	--------------

MEDICAL PLAN (ICS 206 WF)

Controlled Unclassified Information//Basic

1. Incident/Project Name		2. Operational Period					
Morris Creek Fire		0600-2000		07/10/2018			
3. Ambulance Services							
Name	Complete Address	Phone & EMS Frequency	Advanced Life Support (ALS)				
			Yes	No			
Cimarron EMS	133 N Jefferson Ave, Cimarron NM, 87714	Raton Dispatch 575-445-2704 or 911	X	X			
Raton EMS	127 Clark Ave Raton, NM 87740	Raton Dispatch 575-445-2704 or 911		X			
Angel Fire EMS	11 N Angel Fire Rd, Angel Fire, NM 87710	Red River dispatch 575-754-2333 or 911	X	X			
4. Air Ambulance Services							
Name	Phone	Type of Aircraft & Capability					
Lifeguard Air Emergency	Raton Dispatch 575-445-2704 or 505-272-3115 or 911	Helo @ ABQ Airport (Fixed wing also available), ~1 hr ETA to ICP, 24/7, VMED28					
Tristate Care flight	Raton Dispatch 575-445-2704 or 800-800-0900 or 911	Helo @ Taos Airport, ~45min ETA to ICP, 24/7, VMED28					
Classic Lifeguard	Raton Dispatch 575-445-2704 or 800-444-9223 or 911	Helo @ Los Alamos, ~75min ETA to ICP, 24/7, VMED28					
Grand Canyon Short Haul 8PA	Taos Interagency dispatch 575-758-6208	Helo Short Haul, @ Emily Fire, Daylight Only, VMED28, Extended response time					
New Mexico National Guard	Taos Interagency dispatch 575-758-6208	Helo Hoist, @ Santa Fe, ALS, 24/7, VMED28, Extended response time					
Incident Helicopter OVR	Morris Creek Communications	Helo, Angel Fire Helibase, Daylight Only, Incident Channels & VMED28 Medic Team 2 (Kahn EMPF/Becker EMTF) Staged at Helibase					
5. Hospitals							
Name Complete Address	GPS Datum – WGS 84 Coordinate Standard Degrees Decimal Minutes DD° MM.MMM' N - Lat DD° MM.MMM' W - Long	Approximate Travel Time From ICP		Phone	Helipad		Level of Care Facility
		Air	Gnd		Yes	No	
Holy Cross Hospital 1397 Weimer Rd, Taos NM, 87571	Lat: N 36 22.070	25 min	90 min	575-758-8883 ER:575-751-5835	X		Critical Access (no ortho)
	Long: W 105 34.63						
	VHF:						
Miners Colfax Medical Center 203 Hospital Dr, Raton, NM	Lat: N 36 51.73	25 min	60 min	575-445-7700 ER:575-445-7703	X		Level 3 Trauma Center
	Long: W 104 26.55						
	VHF:						
University of New Mexico 2211 Lomas Blvd NE Albuquerque NM 87106	Lat: N 35 05.277	1+ hr	3+ hrs	505-272-2411 Dr:888-866-7257	X		Level 1 Trauma Center Limited Burn Center Medical helicopters only
	Long: W 106 37.124						
	VHF:						
Philmont Medical Clinic 10 Conejo Rd, Cimarron, NM	Lat: N 36 27.269	10 min	10 min	575-376-1149		X	Critical Access
	Long: W 104 57.409						
	VHF:						
Alta Vista Regional Hospital 104 Legion Dr, Las Vegas, NM 87701	Lat: N 35 37.417	30 min	1.5 hrs	505-426-3500 ER:505-426-3502	X		Acute Care Hospital
	Long: W 105 12.642						
	VHF:						
Christus St Vincent Regional Medical Center 455 St Michaels Dr, Santa Fe	Lat: N 35 39.607	1 hr	2.5 hrs	505-913-3361	X		Level 3 Trauma Center
	Long: W 105 56.792						
	VHF:						
University of Colorado Hospital/Burn Center 12605 E 16 th Ave Aurora Co 80045	Lat: N 39 44.530	2.5+hrs	5+ hrs	720-848-7583 Dr: 844-285-4555	X		Level 1 Trauma Center Burn Center
	Long: W 104 50.545						
	VHF:						
6. Other Resources		Name	Phone				
Extrication/Heavy Rescue		Cimarron & Raton	Raton Dispatch @ 911 or 575-445-2704				
Swift Water Rescue		Taos Fire Department	Taos Interagency Dispatch @ 575-758-6208 or 911				
Search & Rescue (SAR)		Philmont SAR	Raton Dispatch @ 911 or 575-445-2704 or New Mexico State Police Dispatch @ 575-445-5571				
Law Enforcement		Colfax Co SO or Cimarron PD	Raton Dispatch @ 911 or 575-445-2704 or New Mexico State Police Dispatch @ 575-445-5571				




MEDICAL PLAN (ICS 206 WF)

Controlled Unclassified Information//Basic

7. Division Branch Group	Area Location Capability				
DIV ALPHA / ZULU	EMS Responders & Capability:	Ambo 2 (McMahon EMPF/Jessen EMTF) Medic Team 3 (Palmer EMPF/Crawford EMTF)			
	Equipment Available on Scene:	ALS Ambo, ALS & BLS Kits			
	Medical Emergency Channel:	Command &/or VMED 28			
	ETA for Ambulance to Scene:	All Times Approximate			
	Air:	Minimum 1 hr			
	Ground:	Minimum 20 min			
	Approved Helispot:	H10	H20	H30 (Rimrock Helispot)	
	Lat:	36 20.504	36 20.726	36 21.549	
	Long:	105 03.658	105 03.969	105 04.280	
DIV CHARLIE	EMS Responders & Capability:	Use Ambo 2 assigned to Div Z			
	Equipment Available on Scene:	None			
	Medical Emergency Channel:	Command &/or VMED 28			
	ETA for Ambulance to Scene:	All Times Approximate			
	Air:	Minimum 1 hr			
	Ground:	Minimum 45 min			
	Approved Helispot:	H30 (Rimrock Helispot)			
	Lat:	36 21.549			
	Long:	105 04.280			
DIV KILO	EMS Responders & Capability:	AMBO 1 (Apodaca EMPF/Goettee EMTF), Santa Fe REMS Team (Anstine EMPF, Lopez EMPF, Miller AEMF, Hayman AEMF)			
	Equipment Available on Scene:	ALS Ambo; ALS & BLS Kits, Technical Equipment & UTV			
	Medical Emergency Channel:	Command &/or VMED 28			
	ETA for Ambulance to Scene:	All Times Approximate			
	Air:	Minimum 1 hr			
	Ground:	Minimum 1 hr			
	Approved Helispot:	H33	H24	H26	H28 H37
	Lat:	36 22.688	36 25.483	36 24.824	36 25.499 36 23.836
	Long:	105 03.985	105 08.839	105 07.016	105 06.204 105 03.607
DIV MIKE	EMS Responders & Capability:	Medic Team 5 (Krause EMPF/Gonzales EMTF)			
	Equipment Available on Scene:	ALS & BLS Kits, UTV			
	Medical Emergency Channel:	Command &/or VMED 28			
	ETA for Ambulance to Scene:	All Times Approximate			
	Air:	Minimum 1 hr			
	Ground:	Minimum 1 hr			
	Approved Helispot:	H76	H38		
	Lat:	36 26.901	36 25.529		
	Long:	104 57.590	105 02.552		
DIV OSCAR	EMS Responders & Capability:	Ambo 3 (Bond EMPF/ Gronewald EMTF)			
	Equipment Available on Scene:	ALS Ambo			
	Medical Emergency Channel:	Command &/or VMED 28			
	ETA for Ambulance to Scene:	All Times Approximate			
	Air:	Minimum 1 hr			
	Ground:	Minimum 1 hr			
	Approved Helispot:	H55	H60	H70	H78
	Lat:	36 21.679	36 22.124	36 22.532	36 22.623
	Long:	105 01.075	105 01.430	104 59.821	104 57.249

MEDICAL PLAN (ICS 206 WF)

Controlled Unclassified Information//Basic

DIV PAPA	EMS Responders & Capability:	Medic Team 1 (Hayes EMPF/Rone EMTF)	
	Equipment Available on Scene:	ALS & BLS Kits	
	Medical Emergency Channel:	Command &/or VMED 28	
	ETA for Ambulance to Scene:	All Times Approximate	
	Air:	Minimum 1 hr	
	Ground:	Minimum 20 min	
	Approved Helispot:	H45	H50
	Lat:	36 21.180	36 21.527
	Long:	105 02.226	105 02.160
	IA GROUP	EMS Responders & Capability:	None/911
Equipment Available on Scene:		None	
Medical Emergency Channel:		Command &/or VMED 28	
ETA for Ambulance to Scene:		All Times Approximate	
Air:		UNK	
Ground:		UNK	
Approved Helispot:		None	
Lat:			
Long:			
8. Name & Location			
Remote Camp Location(s)			
BASE CAMP 1115 Highway 21, Cimarron NM 87714	Point of Contact:	Jesse Hernandez MEDL (520)-560-2742	
	EMS Responders & Capability:	Medic Team 4 (Estrada EMPF/Racicot EMTF) AMBO 1 & AMBO 2 (rotate nightly)	
	Equipment Available on Scene:	500 man kit	
	Medical Emergency Channel:	Command &/or VMED 28	
	ETA for Ambulance to Scene:	All Times Approximate	
	Air:	Minimum 1 hr	
	Ground:	Minimum 30 min day/ Minimum 10 min night	
	Approved Helispot:	H80	
	Lat:	36 20.875	
	Long:	104 56.192	
ICP 132 North Collison, Cimarron NM 87714	Point of Contact:	Alan Schuster MEDL (928-533-6231) Jeff Hatch MEDL (435)-414-3521	
	EMS Responders & Capability:	Raton Dispatch 575-445-2704 or 505-272-3115 or 911	
	Equipment Available on Scene:	100 man Kit	
	Medical Emergency Channel:	Command &/or VMED 28	
	ETA for Ambulance to Scene:	All Times Approximate	
	Air:	Minimum 30min Dependent on availability	
	Ground:	Minimum 10min Dependent on availability	
	Approved Helispot:	Wayne Baker Heliport	
	Lat:	N 36 30.761	
	Long:	W 104 55.484	
9. Prepared By (Medical Unit Leader)		10. Date/Time	11. Reviewed By Safety Officer & Medical Command officer
Alan Schuster (928)-533-6231 Jeff Hatch (435)-414-3521 		07/09/2018 @2100	Bill Kornrumpf  Troy Lutrick 
			07/09/2018 @2100

MEDICAL PLAN (ICS 206 WF)

Controlled Unclassified Information//Basic

Medical Incident Report

FOR A NON-EMERGENCY INCIDENT, WORK THROUGH CHAIN OF COMMAND TO REPORT AND TRANSPORT INJURED PERSONNEL AS NECESSARY.

FOR A MEDICAL EMERGENCY: IDENTIFY ON SCENE INCIDENT COMMANDER BY NAME AND POSITION AND ANNOUNCE "MEDICAL EMERGENCY" TO INITIATE RESPONSE FROM IMT COMMUNICATIONS/DISPATCH.

Use the following items to communicate situation to communications/dispatch.

1. CONTACT COMMUNICATIONS / DISPATCH (Verify correct frequency prior to starting report)

Ex: "Communications, Div. Alpha. Stand-by for Emergency Traffic."

2. INCIDENT STATUS: Provide incident summary (including number of patients) and command structure.

Ex: "Communications, I have a Red priority patient, unconscious, struck by a falling tree. Requesting air ambulance to Forest Road 1 at (Lat./Long.) This will be the Trout Meadow Medical, IC is TFLD Jones. EMT Smith is providing medical care."

Severity of Emergency / Transport Priority	<input type="checkbox"/> RED / PRIORITY 1 Life or limb threatening injury or illness. Evacuation need is IMMEDIATE <i>Ex: Unconscious, difficulty breathing, bleeding severely, 2° - 3° burns more than 4 palm sizes, heat stroke, disoriented.</i> <input type="checkbox"/> YELLOW / PRIORITY 2 Serious Injury or illness. Evacuation may be DELAYED if necessary. <i>Ex: Significant trauma, unable to walk, 2° - 3° burns not more than 1-3 palm sizes.</i> <input type="checkbox"/> GREEN / PRIORITY 3 Minor Injury or illness. Non-Emergency transport <i>Ex: Sprains, strains, minor heat-related illness.</i>	
Nature of Injury or Illness & Mechanism of Injury		Brief Summary of Injury or Illness <i>(Ex: Unconscious, Struck by Falling Tree)</i>
Transport Request		Air Ambulance / Short Haul/Hoist Ground Ambulance / Other
Patient Location		Descriptive Location & Lat. / Long. (WGS84)
Incident Name		Geographic Name + "Medical" <i>(Ex: Trout Meadow Medical)</i>
On-Scene Incident Commander		Name of on-scene IC of Incident within an Incident <i>(Ex: TFLD Jones)</i>
Patient Care		Name of Care Provider <i>(Ex: EMT Smith)</i>

3. INITIAL PATIENT ASSESSMENT: Complete this section for each patient as applicable (start with the most severe patient)

Patient Assessment: See IRPG page 106

Treatment:

4. TRANSPORT PLAN:

Evacuation Location (if different): (Descriptive Location (drop point, intersection, etc.) or Lat. / Long.) Patient's ETA to Evacuation Location:

Helispot / Extraction Site Size and Hazards:

5. ADDITIONAL RESOURCES / EQUIPMENT NEEDS:

Example: Paramedic/EMT, Crews, Immobilization Devices, AED, Oxygen, Trauma Bag, IV/Fluid(s), Splints, Rope rescue, Wheeled litter, HAZMAT, Extrication

6. COMMUNICATIONS: Identify State Air/Ground EMS Frequencies and Hospital Contacts as applicable

Function	Channel Name/Number	Receive (RX)	Tone/NAC *	Transmit (TX)	Tone/NAC *
COMMAND					
AIR-TO-GRND					
TACTICAL					

7. CONTINGENCY: Considerations: If primary options fall, what actions can be implemented in conjunction with primary evacuation method? Be thinking ahead.

8. ADDITIONAL INFORMATION: Updates/Changes, etc.

REMEMBER: Confirm ETA's of resources ordered. Act according to your level of training. Be Alert. Keep Calm. Think Clearly. Act Decisively.