

# MORRIS CREEK

NM-N2S-000489

## Incident Action Plan

**SOUTHWEST AREA**



### Financial Codes

**PNLXN1 (1502) [P]**

GPS Points can be collected in either WGS84 OR NAD83

Morris Creek Fire Information: (575) 383 4597 8am to 9pm

7/11/2018 thru 7/11/2018

0600 to 2000

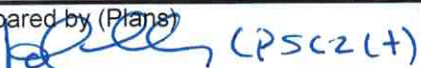






## **VALUES AT RISK**

- **Emergency Responders and the Public**
- **CS Ranch and associated infrastructure**
- **UU Bar Ranch and associated infrastructure**
- **Philmont Scout Ranch and associated infrastructure**
- **State Trust Lands**
- **Watersheds**
- **Grazing Lands**
- **Local Infrastructure, Utilities and Power Lines**

## Incident Objectives List (ICS 202)

1. Incident Name	2. Date Prepared	3. Time Prepared
MORRIS CREEK	7/10/2018	1800
4. Operational Period (Date and Time)		
From: 7/11/2018 at: 0600	From: 7/11/2018 at: 2000	
5. General Control Objectives for the Incident (include Alternatives)		
* Engage the fire with tactics and strategies to provide the highest level of firefighter and public safety and where suppression actions have a high probability of success.		
* Minimize the fire effects from high severity fire and fire suppression activities where possible.		
* Utilize low intensity fire within T&E and sensitive species habitat and to minimize impacts to watersheds.		
* Maintain and enhance relationships with local land partners and neighboring communities. Provide regular incident updates to affected stakeholders.		
* Provide Initial Attack Response in area of the Temporary Flight Restriction (TFR), and assist New Mexico State Forestry with Initial Response as requested by the Cimarron District.		
*		
*		
*		
*		
6. Weather Forecast for Operational Period		
See Attached		
7. General Safety Message		
Driving is one of the largest hazards on any incident. When backing use a spotter when available. Ensure rules of engagement are followed, utilizing a risk management strategy. Maintain two to one work:rest ratio.		
8. Attachments (check if attached)		
Organization List (ICS 203) Assignment List (ICS 204) Communications Plan (ICS 205)	Medical Plan (ICS 206) Incident Map Traffic Plan	General Forecast Fire Behavior
9. Prepared by (Plans)  (PSC2LT)	10. Approved by (IC) 	

ORGANIZATION ASSIGNMENT LIST			9. Operations Section	
1. Incident Name		Operations		DARRELL WILLIS / AARON HULBURD
MORRIS CREEK				KEN WATKINS / TRUE BROWN (t)
2. Date	3. Time	a. Branch I - Division/Groups		
7/10/2018	1800	Branch Director		
4. Operational Period		Deputy		
From: 7/11/2018 0600 To: 7/11/2018 2000		DIVISION ALPHA / ZULU		SHELBY ERICKSON
5. Incident Commander and Staff		DIVISION CHARLIE		DANIEL CEDENO
Incident Commander	DAVE GESSER	DIVISION KILO		JOSH CABRAL / STEVEN GRIEGO (t)
Deputy	MARK BERNAL (t)	DIVISION MIKE		CORY CARLSON / KEITH BORGHOFF (t)
Safety Officer	BILL KORNRUMPH	DIVISION OSCAR		BRAD JOHNSON / LEVI GUFFEY (t)
Information Officer	SHARMA CHAVEZ / SANDRA LOPEZ	DIVISION PAPA		B. DAVIDSON / M. ROSENGARTAN (t)
Liaison Officer	PETE SMITH / TOM VIGIL (T)	DIVISION IA GROUP		MARIO OROZCO
Human Resources	DAVINA DIAZ	DIVISION		
6. Agency Representative		b. Branch II - Division/Groups		
Agency	Name	Branch Director		
DISTRICT FORESTER	ERNIE LOPEZ	Deputy		
FIRE MANAGEMENT OFFICER	CHRIS ROMO			
DIST. TIMBER MGMT OFFICER	ARNIE FRIEDT			
RESOURCE ADVISOR	JOHN CELLEY			
		c. Branch III - Division/Groups		
7. Planning Section		Branch Director		
Chief	TROY LUTRICK	Deputy		
Deputy	C. VANDRIEL / J. THORNBURG (t)			
Resource Unit	BILL KUAMOO			
Situation Unit	SONYA FEASTER			
Situation Unit	DON WEAVER (t)			
Documentation Unit	PHIL SETTLES			
Demobilization Unit	JIM COOLEY			
Training Specialist	MICHAEL WILSON			
Training Specialist	JONENA HEARST (t)	d. Air Operations Branch		
Status Check-in	BOB SCABBY	Air Operations Branch Director	DAN SULLIVAN	
ITSS	BLAKE MILLER	Air Support Supervisor		
GISS	M. LEHR / S. WALTERSHEID	Air Attack Supervisor		ALANNA ENGLISH
IMET	ROBERT RICKEY	Helibase Manager		
FBAN	STEWART TURNER	Air Tanker Coordinator		
COLLECTOR	DAVID TYLER (T)	10. Finance Section		
8. Logistics Section		Chief		KEN LEAKE
Chief	SUSAN CORNETT	Deputy		MEGAN MACHT (t)
Deputy	JEFF HAMMOND (t)	Time Unit Leader		KAREN JONES
Ordering Manager		Equipment Time		GEORGIA BURNS
Supply Unit	DONALD YEE	Equipment Time		
Facilities Unit	DANIEL COMELLA	Equipment time		
Ground Support Unit		Personnel Time		ANGELA SANDOVAL
Communications Unit	MIKE NORMAN	Cost Unit		DONNA SANDERS
Communications Unit	MARTIN JOHNSON / MARK SPANN			
Medical Unit	ALAN SCHUSTER	Prepared by		
Medical Unit	JEFF HATCH			
Medical Unit	JESSE HERNANDEZ	RESLT		
Base Camp Manager	MAYLON BROWN			



# Fire Weather Forecast



**FORECAST NO:** 8  
**PREDICTION FOR:** Wednesday  
**SHIFT DATE:** July 11 2018  
**FORECAST ISSUED:** 7/10/2018 at 2000

**INCIDENT:** Morris Creek  
**UNIT:** State of New Mexico Cimarron District  
**SIGNED:** *Robert Rickey*  
**Incident Meteorologist (IMET)**

## Flash Flood Watch: Noon to Midnight Tonight

**Weather Discussion:** A passing trough will combine with increasing moisture to bring scattered showers and thunderstorms to the area today. The primary hazards from these storms will be frequent lightning and gusty outflow winds. In addition, periods of heavy rainfall will lead to an increased risk of flash flooding, and a Flash Flood Watch has been issued for the area from noon to midnight tonight. Deep moisture remains in place on Thursday and Friday leading to good chances for showers and thunderstorms each day.

### WEATHER FORECAST:

**Today:**  
**Weather:** Partly cloudy, becoming mostly cloudy with scattered showers and thunderstorms in the afternoon and evening. Expect gusty and erratic winds in the vicinity of storms.

**High Temperatures:** 75-79

**Min RH:** 30-34%

**20-FOOT WINDS:** Ridge: South-Southwest 4 to 8 mph with gusts to 18 mph.  
 Valley: Upslope/Upvalley 5 to 9 mph with gusts to 15 mph.

**CWR ( $\geq 0.10''$ )...40% LAL...3 Haines Index...3 (Low)**

**Mixing Height...9500 ft AGL Transport Wind...South 7 mph**

### Tonight:

**Weather:** Mostly Cloudy with scattered showers and thunderstorms.

**Low Temperatures:** 50-54

**Max RH:** 87-91%

**20-FOOT WINDS:** Ridge: Northwest 4 to 8 mph.  
 Valley: Downslope/Downvalley 3 to 6 mph.

**CWR ( $\geq 0.10''$ )....30% LAL...2 Haines Index...3 (Low)**

### Outlook for Thursday:

**Weather:** Mostly cloudy with afternoon showers and thunderstorms likely. Expect gusty and erratic winds in the vicinity of storms.

**High Temperatures:** 71-75

**Min RH:** 42-45%

**20-FOOT WINDS:** Ridge: South-Southwest 4 to 8 mph with gusts to 18 mph.  
 Valley: Upslope/Upvalley 5 to 9 mph with gusts to 15 mph.

**CWR ( $\geq 0.10''$ )...60% LAL...4 Haines Index...3 (Low)**

**Mixing Height...8500 ft AGL Transport Wind...Southwest 8 mph**

### Extended Outlook for Friday:

**Weather:** Mostly cloudy with afternoon showers and thunderstorms likely. Expect gusty and erratic winds in the vicinity of storms.

**High Temperatures:** 71-75

**Min RH:** 47-51%

**20-FOOT WINDS:** Ridge: South-Southeast winds 5 to 9 mph with gusts to 18 mph.  
 Valley: Upslope/Upvalley 5 to 9 mph with gusts to 15 mph.

**CWR ( $\geq 0.10''$ )...60% LAL...3 Haines Index...2 (Very Low)**

**Mixing Height...8500 ft AGL Transport Wind...Southeast 5 mph**

Sunrise...0551

Sunset...2019



← IRAWS near Morris Creek Fire

# FIRE BEHAVIOR FORECAST

FORECAST NUMBER: 8	TYPE OF FIRE: Wildland Fire
FIRE NAME: Morris Creek	OPERATIONAL PERIOD: July 11
DATE ISSUED: July 10, 2018	TIME ISSUED: 2030
UNIT: State Of New Mexico, Cimarron District	SIGNED: Typed/printed: Stewart Turner, FBAN

## INPUTS

**WEATHER SUMMARY:** For Specifics Please see the attached Incident Weather Forecast.

**WEATHER:** Partly cloudy, becoming mostly cloudy with scattered showers and thunderstorms in the afternoon and evening.

**MAX TEMP:** 75 to 79° **MIN RH:** 29 to 33%

**20 FOOT WINDS:** Ridge: South-Southwest 4 to 8 mph with gusts to 18 mph.

Valley: Upslope/Upvalley 5 to 9 mph with gusts to 15 mph.

**CHANCE OF WETTING RAIN ( $\geq 0.10''$ ):** 40% Haines Index: 3 (low). LAL 3

**FUELS:** The fire is burning through mixed conifer and Ponderosa Pine stands, and grass fuels.

Minimum Fine Dead Fuel Moisture (DFM): 4%, 10 Hour DFM: 7%, 100 Hour DFM: 11%, 1000 Hour DFM 8%

**Cimarron RAWs:** ERC – 65

## OUTPUTS

### FIRE BEHAVIOR

#### GENERAL:

Fire behavior will begin to moderate with the increase in humidity and cloud cover. Expect to see smoldering to low fire behavior. Brief moderate fire behavior can be expected along the Rayado Creek drainage when sunshine, humidity and fuels align. Anticipate smoldering in the larger fuels in the interior of the fire scar. The larger fuels are dry enough to hold fire until they are extinguished or consumed. Gusty winds can accelerate the fire behavior. Wind can overcome humidity increasing short term fire behavior. Probability of Ignition: 41% during the heat of the day with the 60% cloud cover.

#### SPECIFIC:

Division A/Z: Smoldering fire behavior is expected.

Rayado Canyon: Low fire behavior can be expected early in the day. Later the cloud cover will help to moderate the fire, decreasing the probability of ignition and spotting potential. New spots have set up low on the slope threatening an upslope run. Fire will favor the small sub-ridges and fuels along the north facing slopes. Spread north of the creek will be limited by fuels, humidity, and shading.

Initial Attack: Expect to see low to moderate fire behavior with gusty outflow winds. Proper size up is important to estimate potential and fire behavior.

#### AIR OPERATIONS:

Thunderstorms and outflow wind may hinder air operations.

## SAFETY

*LCES is a self-triggering mechanism. **Lookouts** assess, and reassess, the fire environment and **Communicate** threats of safety to firefighters. Firefighters use **Escape routes** to move to **Safety zones**.*













<b>1. Incident Name:</b>	<b>3. Branch</b>	<b>Division/Group</b>
<b>MORRIS CREEK</b>		<b>PAPA</b>
<b>2. Operational Period:</b>		
Date/Time From: 7/11/2018 0600	Date/Time To: 7/11/2018 2000	

4. Operations Personnel							
<b>OPERATIONS CHIEF</b>	DARRELL WILLIS / AARON HULBURD KEN WATKINS / TRUE BROWN (t)				<b>BRANCH DIRECTOR</b>		
<b>DIVISION/GROUP SUPERVISOR</b>	B. DAVIDSON / M. ROSENGARTAN (t)				<b>AIR OPERATION DIRECTOR</b>		ALANNA ENGLISH ALAN SCHUSTER IVAN CUPP
<b>MEDICAL GROUND TRANSPORT TIME</b>	Less than 2 hours	<b>X</b>	2 HOURS TO 4 HOURS	MORE THAN 4 HOURS	<b>AIR ATTACK SUPERVISOR</b>		
						<b>FIELD MEDICAL OFFICER</b>	
					<b>SAFETY OFFICER</b>		

5. Resources Assigned this Period							
Type/Kind	Resource Name	RES #	LWD	Leader	# Persons	Drop Off PT./Time	Pick Up PT./Time
T2IA	RETURNING HEROS BLUE	C-1	7/12	JUSTIN MAESTAS	17	0600 / UU BAR	2000 / UU BAR
T2	APACHE KID	O-66	7/18	JAMES BARRON	9	0600 / UU BAR	2000 / UU BAR
T3	SAN JUAN COUNTY B-12	E-44	7/17	CHAD VECELLIO	3	0600 / UU BAR	2000 / UU BAR
T6	ANTHIS FAMILY ENT	E-38	7/18	JOHN HOELLERICH	3	0600 / UU BAR	2000 / UU BAR
T6	E 2574	E-60	7/18	JAMES SANCHEZ	4	0600 / UU BAR	2000 / UU BAR
DOZ1	BLACKSTEN	E-69	7/15	Z. BLACKSTEN	1	0600 / UU BAR	2000 / UU BAR
WT2T	ST. JOHNS FIRE 1976	E-46	7/17	ROBERT VALLEJOS	2	0600 / UU BAR	2000 / UU BAR
DOZ1	UU BAR D8	E-67		MICHAEL DECKER	1	0600 / UU BAR	2000 / UU BAR
	EMPF	E-10	7/19	MEDIC TEAM 1	2	0600 / UU BAR	2000 / UU BAR
	TFLD	C-1.2	7/12	MYRON SHECHE	1	0600 / UU BAR	2000 / UU BAR
	TFLD	O-68	7/15	JAKE GUADIANA (t)	1	0600 / UU BAR	2000 / UU BAR
						0600 / UU BAR	2000 / UU BAR
						0600 / UU BAR	2000 / UU BAR
						0600 / UU BAR	2000 / UU BAR
						0600 / UU BAR	2000 / UU BAR
						0600 / UU BAR	2000 / UU BAR
						0600 / UU BAR	2000 / UU BAR
						0600 / UU BAR	2000 / UU BAR
						0600 / UU BAR	2000 / UU BAR
						0600 / UU BAR	2000 / UU BAR
						0600 / UU BAR	2000 / UU BAR
						0600 / UU BAR	2000 / UU BAR

6. Control Operations/Work Assignment		
TASK	PURPOSE	END STATE
HOLD AND SECURE FIRELINE NORTH OF MORRIS CREEK ROAD TO THE RIM'S EDGE.	MINIMIZE FIRE SPREAD TO THE NORTH / EAST AND TO LESSEN IMPACT TO WATERSHED AND VALUES AT RISK.	FIRE CONTAINED AS SAFELY AND EFFICIENTLY AS POSSIBLE AND NEGATIVE IMPACTS FROM SUPPRESSION EFFORTS AND FIRE ARE MINIMIZED.
SCOUT DIVISION AND IDENTIFY COTROL LINES TO MINIMIZE FIRE SPREAD TO THE EAST		

**7. Special Instructions**

IDENTIFY REHAB NEEDS AND IMPLEMENT AS NEEDED.

VALUES AT RISK - POWER LINES.

8. Division/Group Communication Summary						
Function	Channel	RX Frequency N/W	RX Tone/NAC	TX Frequency N/W	TX Tone/NAC	Mode
TACTICAL	6	168.2500	136.5	168.2500	136.5	
COMMAND	7	170.0000	136.5	166.6750	136.5	
AIR TO GROUND	14	169.2000		169.2000		

<b>9. Prepared By (Resource Unit Leader)</b> BILL KUAMOO <i>Res (T)</i>	<b>Approved By (Planning Section Chief)</b> PSC2 (t)	<b>Date</b> 7/10/2018	<b>Time</b> 1800
--	---	--------------------------	---------------------





# L.C.E.S.

**Morris Creek**

**07/11/2018**

**L**OOKOUTS **C**OMMUNICATIONS **E**SCAPE ROUTES **S**AFETY ZONES

## ***SAFETY MESSAGE:***

***FATIGUE*** – Here are a few indicators:

- difficulty in concentrating and thinking clearly*
- greater intolerance for error*
- inattention to minor, but potentially important details*
- increased errors*
- slow and irregular reaction times*

***DRIVING*** - Drive defensively at all time. Seat belts and lights are a must. Perform periodic preventive maintenance checks on your vehicles; keep them free of clutter; and keep windshield and windows clean. Use caution when driving along Hwy. 21. Watch for deer and runners in the Philmont Scout Camp area.

***Hydration-*** Maintaining body fluids is essential for sweating. You must hydrate before, during, and after work.

***Weather*** – Keep an eye on the sky and watch for afternoon thunderstorm build up.

### **Look Up, Look Down, Look Around**

**\*Look Up:** Check the sky for any weather changes such as building or approaching thunderstorms, wind shifts or increasing in speed. Watch for air operations and water drops. Look for snags.

**\*Look Down:** Watch your footing. Keep an eye out for rattlesnakes and other stinging and pokey plants.

**\* Look Around** Check fuel loading in the area, general terrain, current fire behavior and ladder fuels. Keep an eye on fellow firefighters for signs of heat stress and smoke inhalation.

**“It costs \$0.00 to treat someone with respect”**

***Safety Officers: Kornrumph, W.H. and the rest of your Safety Team!***





## Medical Incident Report

Page Last Modified / Reviewed:  
Dec 2017

The new Medical Incident Report (MIR) form can be found at all of the following: pages 118-119 of the [IRPG](#), Medical Plan [ICS-206 WF](#) form and in many Incident Action Plans (IAPs). The MIR evolved from, and has replaced, the "9 Line Form" and "Pink Sticker."

**The MIR is not always tasked to the EMT or Paramedic in "Patient Care". The intent of the form is to:**

1. establish control of the incident whether routine or life-threatening by initiating a new Incident Command System,
2. have a systematic standard process for reporting medical incidents/injuries, similar to a fire size-up form for initial attack, and
3. have any firefighter be able to fill it out and transmit with prior training and direction.

Treat it like any incident. If the incident is overwhelming, ask for a more qualified IC to assume command and expand/contract the organization's size depending on the needs of the incident.

- Fill this form out completely prior to transmitting the report to dispatch/communications. **If there is a life threat, do not let documentation delay patient care.**
- When transmitting the report, state the number and title of each section and say "break" and pause between the sections (e.g., "Dispatch, TFLD Jones, Stand by for Priority Medical Incident Report. All other radio traffic please hold **BREAK** (pause/wait for response.) **2. Incident Status:** Nature of Illness is chest pain. Incident Name is Tank Medical. IC will be TFLD Jones. Patient Care will be Paramedic Smith. **BREAK. 3. Initial Patient Assessment** is...").
- When using the MIR during a Multi-Casualty Incident (MCI) state the number injured and their severity (Section 3), (e.g., "**3. Initial Patient Assessment**, I have 5 patients. 3 Reds, 1 Yellow and 1 Green. Mechanism of Injury is...").
- Use the terms Paramedic or EMT with the provider's last name in "Patient Care." Do not use EMT to describe a Paramedic or the ambiguous term, "Medic." All those roles need to be clearly identified to understand the level of care and treatment the patient(s) will receive.
- Enact more than one transport plan and clear more than one frequency if needed for Sections 5 and 6.
- Always be ready for the first plan to fail and be flexible enough to move into an alternate plan. Use the acronym PACE (**P**rimary, **A**lternate, **C**ontingency, and **E**mergency) for planning purposes.

References:

[NWCG Incident Emergency Medical Subcommittee \(IEMS\)](#)  
[PMS 210: Wildland Fire Incident Management Field Guide](#)

Additional Resources

[Incident Management Situation Report \(IMSR\)](#)  
[PMS 461: Incident Response Pocket Guide \(IRPG\)](#)  
[PMS 510: Interagency Helicopter Operations Guide \(IHOG\)](#)  
[Interagency Standards for Fire and Fire Aviation Operations \(Red Book\)](#)

Incident Radio Communications Plan (ICS 205) Day Operations				
<b>Incident Name: Morris Creek Fire</b>				<b>Operational Period: 7/11/2018</b>
Channel	Function	Frequency	Narrowband	Assignment & Remarks
1	TAC 1	RX&TX168.0500 rx&tx tone: 136.5	Narrow	Div A/Z
2	TAC 2	RX&TX168.2000 rx&tx tone: 136.5	Narrow	Div C
3	TAC 3	RX&TX168.6000 rx&tx tone: 136.5	Narrow	Div K
4	TAC 4	RX&TX166.7250 rx&tx tone: 136.5	Narrow	Div M
5	TAC 5	RX&TX166.7750 rx&tx tone: 136.5	Narrow	DIV O
6	TAC 6	RX&TX168.2500 rx&tx tone 136.5	Narrow	DIV P
7	CMD 7	RX:170.000 TX:166.6750 tx&rx tone: 136.5	Narrow	Command on Rayado Mesa
8	CMD 8	RX:169.5375 TX:164.7125 tx&rx tone: 136.5	Narrow	Command on Angel Fire
9	CMD 9	RX:169.9875 TX:163.0375 tx&rx tone: 136.5	Narrow	Command on Green Mtn
10	NMSF FIRE	RX&TX159.4200 tx tone: 156.7	Narrow	Cimaron District Office
11	NMSF TAC	RX&TX159.2250	Narrow	I/A
12	ST FIRE	RX&TX 154.3100	Narrow	Local Mutual Aid
13	VMED28	RX & TX155.3400 tx tone 156.7	Narrow	Medical Emergency
14	A/G PRI	RX&TX169.2000	Narrow	Primary Air to Ground
15	A/G SEC	RX&TX167.9875	Narrow	Secondary Air to Ground
16	Air Guard	RX&TX168.625 tx tone: 110.9	Narrow	Emergency Use only

Prepared by: Martin Johns COML *Martin Johns*

Note: CMD 7, CMD 8 and CMD 9 are all linked together. If one doesn't work, try the another.



# Human Resource Message



## Difficult Decisions

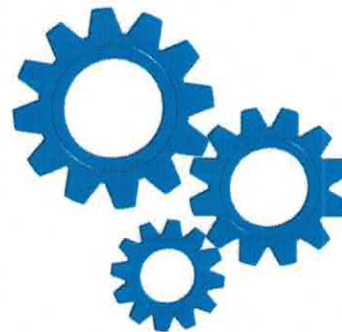
We all make decisions of varying degrees on a daily basis. After several years in the Human Resource Specialist Position (HRSP) and listening to others share their stories with me I discover they often already know the answers to their hardest decisions.

Social working and executive coach Jihan Madyun in his article *Making Big Decisions and Balancing Your Needs with the People You Love* (2014, October 7 Chicago Tribune) wrote the following guide for difficult decision making:

“Go with your gut. Don’t be afraid to follow your intuition. Your first instinct is usually the best one when it comes to big decisions.

Weigh pros versus cons. Go to a quiet place, and freely write the ups and downs of each choice, and anticipated the repercussions of each. Consider which decision would be most advantageous for you and your family in the long run.

Find your courage. This is necessary to create the life you deserve and want. Know that life is not a popularity contest, and you will not always please everyone. Make decisions you can live with at the end of the day.”



“Wisdom is knowing what to do next, skill is knowing how to do it, and virtue is doing it.” – David Starr Jordan (1851-1931), American Educator

Davina Diaz, HRSP, located at the Cimarron Elementary, down hall and left of the turquoise garden box.

# EMNRD NEW MEXICO STATE FORESTRY DIVISION GUIDELINES FOR FOREST FIRELINE REHABILITATION ON STATE AND PRIVATE LANDS

## 1. HAZARD TREES:

Remove downed timber or other obstructions (such as rocks) from roads, which may create post-fire safety hazards. Remove snags that may fall across firelines, roads, or onto structures near the fireline because of line construction or burnout. Buck any snags or live trees burned at bases removed due to posing a safety hazard into smaller four to six-foot sections to reduce the risk of attracting bark beetles and to aid in accelerating the decay process.

## 2. REDUCTION OF EROSION ON HAND LINES AND DOZER LINES:

Construct water bars on hand lines and dozer lines; this includes all interior and perimeter firelines constructed during fire suppression activities. Construct water bars diagonally (at 30 to 35 degrees) not perpendicular, to the suppression lines to divert runoff. Construct drains such that water flows into un-burned areas wherever possible. On steeper slopes water bars may need to be constructed in an alternating pattern to prevent additional erosion from runoff. Insure that water bars have open outlets to avoid restricting water flow. Mitigate or remove any downslope berms/dirt piles, resulting from blading operations, which may exist along the interior and the perimeter of firelines to avoid restricting water flow. Where possible, construct water bars where rocks, vegetation, or debris are below the outlet to dissipate water. Do not construct water bars to divert runoff directly into a stream course.

The following guidelines are to be used in the spacing of water bar construction:

Slope	Maximum Interval
0.0 – 4.9% slope	150 feet
5.0 – 9.9% slope	130 feet
10.0 – 14.9% slope	75 feet
15.0 – 40.0% slope	50 feet
40% slope and greater	20 feet

When dealing with multi-ownership, it may be easier to agree on one guideline for all water bar construction than trying to identify different landowners.

## 3. SEEDING:

Initiate seeding of suppression lines, safety zones, water bars, and other areas of disturbance the suppression effort created as soon as possible. The seed mix should be certified weed free and contain native species whenever possible. The seed mix will contain less than 0.6 percent weed content and no noxious weeds.

As an alternative to seed, hay/straw mulch can also be used on suppression lines; however, hay/straw mulch must be certified as noxious weed free.

4. **SLASH:**

Drop and buck all hangs-ups (pushed over trees) along dozer lines into four to six foot sections. Lop and scatter slash from fire line construction to less than three feet in height. Scatter slash back over the fire line. Do not place slash directly in contact with residual trees. This may only be possible on interior firelines. Remove slash in intermittent and perennial watercourses to above the high-water mark.

5. **ROADS:**

- a. Roads on state and private lands leading to Drop Points may need to be restored.
- b. Stabilize Drop Points, constructed turnarounds, helispots, helibases, and other disturbances. Refer to items 2, 3, and 4 above.
- c. Re-establish all drainage structures and bridges (culverts, cross drains, ditches, rolling dips, down drains, berms\*) to pre-fire or functional conditions. Knock down or open any berms created to properly drain water and prevent channeling. Rolling dips should have open, free flowing, outlets that do not drain directly into water courses.  
\*Berms: a ridge of soil and debris along the edge of a fireline resulting from line construction.
- d. Replace damaged drains or drain aprons.
- e. Where needed, re-grade after suppression activities; stabilize and/or control erosion caused by road activity or upslope suppression activities.

6. **SAFETY ZONES:**

Treat safety zone construction by removing hang-ups and lopping slash to less than three feet in height. Treat slash and berms created during construction of safety zones. Remove berm and spread back into safety zone. Place slash on safety zone and treat as above in items 3 and 4.

7. **DEBRIS CLEAN UP:**

Collect and remove all trash and flagging from within fire area, staging areas, drop points, helispots, and helibase locations.

8. **OTHER STRUCTURES:**

Repair or replace all structures damaged during fireline construction activities (i.e. fences, gates, cattle guards, culverts, etc.).

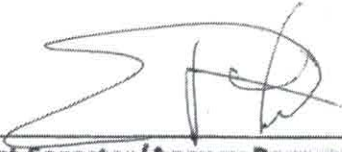
9. **FIRELINE REHABILITATION INSPECTIONS:**

- a. As soon as it is safe to do so, appointed Forestry Division personnel shall conduct a pre-inspection of the hand line and dozer line to identify areas of rehabilitation concern.

- b. As soon as it is safe to do so, after rehabilitation has been completed by fire management personnel, appointed Forestry Division personnel shall verify that all rehabilitation has been executed in accordance with the above guidelines.

10. **Special Considerations:**

Additional rehabilitation may be required as the incident develops.



District Forester/Agency Representative

7/07/10

Date

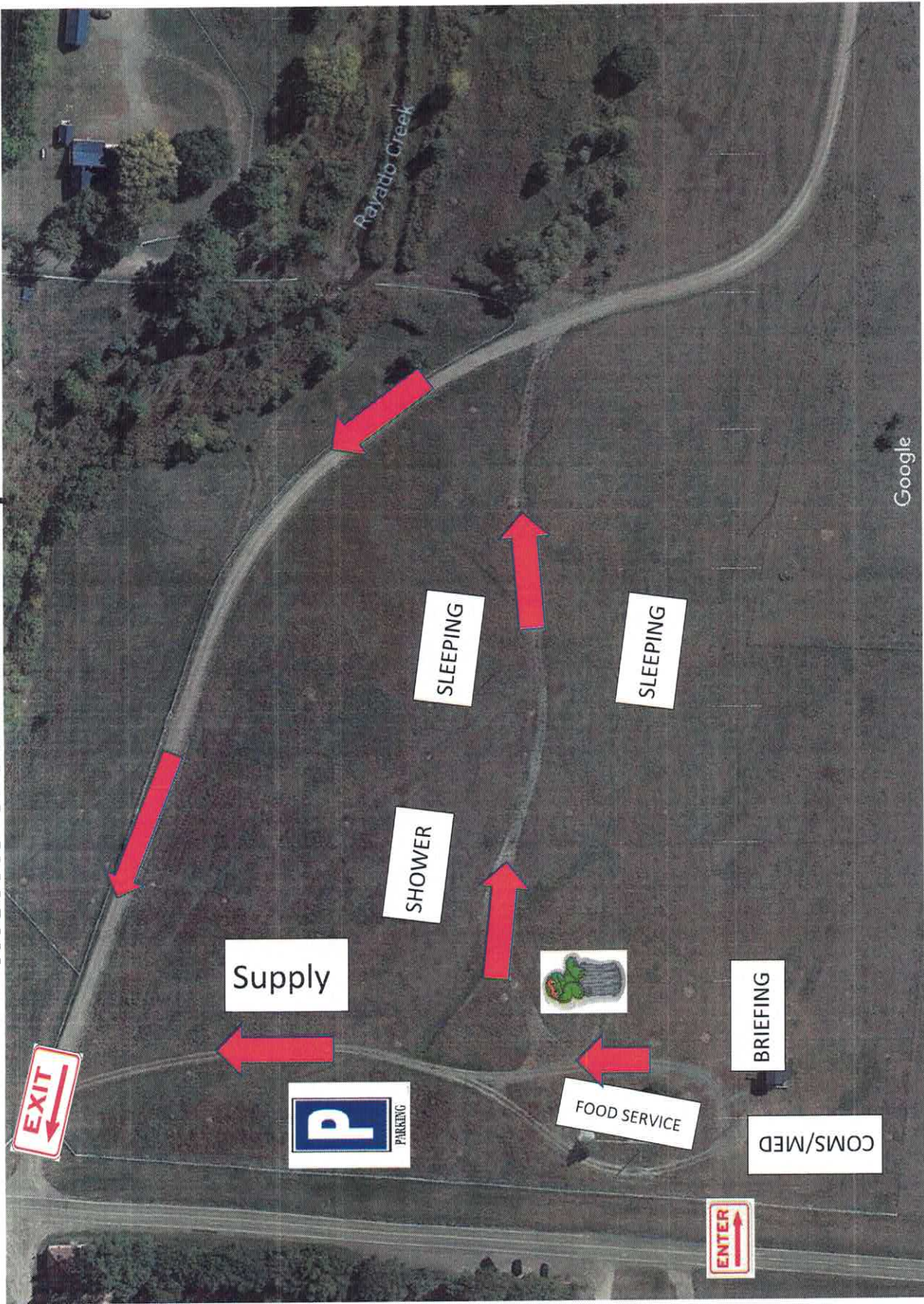


Incident Commander

7-7-18

Date

# Morris Creek Base Camp



### Team Ordering/ Timeline Process:

0600 – Morning Briefing, start of crew time.

1500 – DIVS to have next days resource order ready for OPS.

- Original food orders must be placed 6-hours, plus drive time, prior to actual feeding time.
- Last call to change food orders is 4-hours, plus drive time.
- All crew level orders will be placed through DIVS.
- DIVS will place all orders through Communications Unit.
- All orders will be tracked using the process found on the front of form.

Division Pump Kit			Division Hose Lay Kit		
Item	NFES#	Quantity	Item	NFES#	Quantity
Hose 1½”	1239	1000’	Hose 1½”	1239	3500’
Hose 1”	1238	1000’	Hose 1”	1238	1700’
Hose, ¾”	1016	500’	Hose, ¾”	1016	3000’
Tee, 1 ½” – 1”	731	4	Tee, 1 ½” – 1”	731	15
Nozzle, 1”	138	4	Nozzle, 1”	138	15
Nozzle, ¾”	136	4	Nozzle, ¾”	136	30
1 ½” Gated “Y”	231	4	Valve, 1 ½” Gated “Y”	231	5
1” Gated “Y”	2059	4	Valve, 1” Gated “Y”	2059	2
¾” Gated “Y”	272	4	Valve ¾” Gated “Y”	272	30
Reducers, 1 ½” – 1”	0010	4	Shut off valve ¾”	738	20
Reducers, 1” – ¾”	733	4	Reducers, 1 ½” – 1”	0010	10
Double Female 1”	710	1	Reducers, 1” – ¾”	733	10
Double Female 1 ½”	857	1	Double Female 1”	710	1
Fuel 5 Gal. To Match Pump	606	2	Double Female 1 ½”	857	1
2 Cycle Oil	341	2	Bag, Slingable Water	437	6
<b>Pick One of the Pumps Below</b>					
Pump, Lightweight	670	1			
Pump Mark III	870	1			
<b>Line Spike Hygiene Kit</b>			<b>Line Spike Hygiene Kit (continued)</b>		
Trauma shears		1 ea	Latex or Nitrile gloves		1 box
Moleskin		3 ft	Benadryl		1 box
Gold Bond Blue Powder		5 ea	Spenco 2nd skin		3 boxes
Gold Bond Green Powder		2 ea	Ibuprofen (Advil)		25 ea
Gold Bond Yellow Powder		5 ea	Aminofen (Tylenol)		25 ea
Tolfanate Foot Powder		3 ea	Antiseptic Wipes		20 ea
Vet Wrap (Koflex)		6 ea	Sting Relief		20 ea
Throat Lozenges		40 ea	Baby Wipes		1 box
Hand Sanitizer		20 ea	Bactracin		10 ea
Bug Repellent		3 ea	Chap Stick		10 ea
Sun Screen		5 ea	Ziplock Bags		10 ea
Eye Wash		5 ea			



**INCIDENT  
LINE SUPPLY ORDER FORM  
(OSC/Division Supervisors Only)**

Date & Time Order Was Placed	Order Reference # (DIV + #)		Location for Delivery (Division/LZ/DP/Lat. Long)
<b>DATE:</b>		GROUND SUPPORT	
<b>TIME:</b>		HELICOPTER	
		TO BE PICKED UP BY @	

<b>DATE NEEDED:</b>	<b>TIME NEEDED:</b>
Order received in COMMUNICATIONS by: Name:	Time:
Order received in SUPPLY by: Name:	Time:
Order received in GROUND SUPPORT by: Name:	Time:
Order received in HELIBASE by: Name:	Time:
Order delivered/shipped to final location by: Name:	Time:

#	ITEM	QUANTITY	SHIPPED	PENDING	#	ITEM	QUANTITY	SHIPPED	PENDING
1.	Breakfast – Meals				31.	Lightweight Pump Kit			
2.	Lunch – Meals				32.	Hose – 1 ½” ft.			
3.	Dinner – Meals				33.	Hose – 1” ft.			
4.	MRE’s (# of Cases) 12/cs				34.	Hose – ¾ ” ft.			
5.	Cubies of Water – ea.				35.	Reducer – 1 ½” x 1”			
6.	Bottled Water - Case				36.	Reducer – 1” x ¾”			
7.	Gatorade – Case				37.	Gated “Y” – 1 ½” ea.			
8.	Batteries – AA/box 24 ea.				38.	Gated “Y” – 1” ea.			
9.	Batteries – AAA/C/D ea.				39.	Shut off valve ¾” ea.			
10.	Fuel – Unleaded – Gallons				40.	In – Line Tee 1 ½” x1” ea.			
11.	Fuel – Diesel – Gallons				41.	Nozzle – 1 ½” ea.			
12.	Fuel – Drip Torch (60/40 mix) gals.				42.	Nozzle – 1” ea.			
13.	Bar Oil – QT’s/Gallons				43.	Nozzle ¾”			
14.	2 cycle oil – (1 per gallon)				44.	First Aid Kit – 20 man ea.			
15.	Sleeping Bags – 25 degree				45.	Chainsaw Kit – ea.			
16.	Sleeping Bags – 40 degree				46.	DIV Pump Kit (next page) ea.			
17.	Plastic – roll/sq. ft.				47.	DIV Hose lay Kit (next page) ea.			
18.	Parachute Cord – roll/ft.				48.	Line Spike Hygiene Kit (next page) ea.			
19.	Shovels – ea.								
20.	Pulaski – ea.					<b>MISC. Please list below</b>			
21.	Combi – ea.								
22.	McLeod – ea.								
23.	Fussee – case								
24.	Drip Torch – Full/Empty								
25.	Backpack Pump – Full/Empty								
26.	Slingable Blivet – Suppression								
27.	Slingable Blivet – Drinking					<b>Accountable Property #'s</b>			
28.	Folding Tank 1000/1500 gals								
29.	Pumpkin 1500/3000/6000 gals								
30.	Mark III Pump Kit								



## Morris Creek Fire

### Air-Medical Helicopter Evacuation Plan

**Plan 1:** Upon request, Communications will call 911 and request dispatch of closest most appropriate Air-medical helicopter. One per patient as needed.

Initially, they will be dispatched to Base Camp for consistency however, may be redirected to a different location based on developing information and Medical-Incident-Command instructions.

**Plan 1A:** Direct 911 medical helicopter directly to the scene (closest helispot) of the incident/patient.

**Plan 1B:** Use incident-rotor OVR to transport patient to Base Camp to rendezvous with ground or Air-medical helicopter.

**Plan 1C:** Rotor-OVR transports patient from scene/helispot directly to most appropriate hospital upon incident-medic(s) agreement.

**Plan 1D:** Rotor-OVR transports patient to Morris Creek Helibase (Angel Fire Airport) to rendezvous with ground or Air-ambulance.

Always prepare to adapt due to changing circumstances (weather, available resources, capability of resources, altitude, travel time, etc.).

911-ground or aircrew will ultimately decide patient definitive care destination. They are the local experts.

# MEDICAL PLAN (ICS 206 WF)

Controlled Unclassified Information//Basic

1. Incident/Project Name		2. Operational Period					
<b>Morris Creek Fire</b>		<b>0600-2000</b>		<b>07/11/2018</b>			
3. Ambulance Services							
Name	Complete Address	Phone & EMS Frequency	Advanced Life Support (ALS)				
			Yes	No			
Cimarron EMS	133 N Jefferson Ave, Cimarron NM, 87714	Raton Dispatch @ 911 or 575-445-2704	X	X			
Raton EMS	127 Clark Ave Raton, NM 87740	Raton Dispatch @ 911 or 575-445-2704		X			
Angel Fire EMS	11 N Angel Fire Rd, Angel Fire, NM 87710	Red River dispatch @ 911 or 575-754-2333	X	X			
4. Air Ambulance Services							
Name	Phone	Type of Aircraft & Capability					
Classic Lifeguard	Raton Dispatch @ 911 or 575-445-2704	Helo @ Los Alamos, ~45min ETA to ICP, 24/7, VMED28					
Tristate Care flight	Raton Dispatch @ 911 or 575-445-2704	Helo @ Taos Airport, ~35min ETA to ICP, 24/7, VMED28 <b>NOTE: Only able to respond to Angelfire Helibase</b>					
Lifeguard Air Emergency	Raton Dispatch @ 911 or 575-445-2704	Helo @ ABQ Airport (Fixed wing also available), ~1 hr ETA to ICP, 24/7, VMED28					
Grand Canyon Short Haul 8PA	Taos Interagency dispatch 575-758-6208	Helo Short Haul, @ Emily Fire, Daylight Only, VMED28 <b>NOTE: Extended response time</b>					
New Mexico National Guard	Taos Interagency dispatch 575-758-6208	Helo Hoist, @ Santa Fe, ALS, 24/7, VMED28 <b>NOTE: Extended response time</b>					
Incident Helicopter OVR	Morris Creek Communications	Helo, @Angel Fire Helibase, Daylight Only, Incident Channels & VMED28 Medic Team 2 (Kahn EMPF/Becker EMTF)					
5. Hospitals							
Name Complete Address	GPS Datum – WGS 84 Coordinate Standard Degrees Decimal Minutes DD° MM.MMM' N - Lat DD° MM.MMM' W - Long		Approximate Travel Time From ICP		Phone	Helipad Yes No	Level of Care Facility
	Lat:	Long:	Air	Gnd			
Philmont Medical Clinic 10 Conejo Rd, Cimarron, NM	Lat: N 36 27.269 Long: W 104 57.409 VHF:	10 min	10 min	575-376-1149		X	Critical Access
Christus St Vincent Regional Medical Center 455 St Michaels Dr, Santa Fe	Lat: N 35 39.607 Long: W 105 56.792 VHF:	1 hr	2.5 hrs	505-913-3361	X		Level 3 Trauma Center
University of New Mexico 2211 Lomas Blvd NE Albuquerque NM 87106	Lat: N 35 05.277 Long: W 106 37.124 VHF:	1+ hr	3+ hrs	505-272-2411 Dr:888-866-7257	X		Level 1 Trauma Center Limited Burn Center <b>Medical helicopters only</b>
Miners Colfax Medical Center 203 Hospital Dr, Raton, NM	Lat: N 36 51.73 Long: W 104 26.55 VHF:	25 min	60 min	575-445-7700 ER:575-445-7703	X		Level 3 Trauma Center
Alta Vista Regional Hospital 104 Legion Dr, Las Vegas, NM 87701	Lat: N 35 37.417 Long: W 105 12.642 VHF:	45 min	1.5 hrs	505-426-3500 ER:505-426-3502	X		Acute Care Hospital
Holy Cross Hospital 1397 Weimer Rd, Taos NM, 87571	Lat: N 36 22.070 Long: W 105 34.63 VHF:	25 min	90 min	575-758-8883 ER:575-751-5835	X		Critical Access (no ortho)
University of Colorado Hospital/Burn Center 12605 E 16 <sup>th</sup> Ave Aurora Co 80045	Lat: N 39 44.530 Long: W 104 50.545 VHF:	2.5+hrs	5+ hrs	720-848-7583 Dr: 844-285-4555	X		Level 1 Trauma Center Burn Center
6. Other Resources		Name	Phone				
Extrication/Heavy Rescue	Cimarron & Raton	Raton Dispatch @ 911 or 575-445-2704					
Swift Water Rescue	Taos Fire Department	Taos Interagency Dispatch @ 575-758-6208 or 911					
Search & Rescue (SAR)	Philmont SAR	Raton Dispatch @ 911 or 575-445-2704 or New Mexico State Police Dispatch @ 575-445-5571					
Law Enforcement	Colfax Co SO or Cimarron PD	Raton Dispatch @ 911 or 575-445-2704 or New Mexico State Police Dispatch @ 575-445-5571					

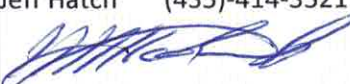
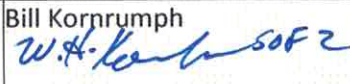

# MEDICAL PLAN (ICS 206 WF)

Controlled Unclassified Information//Basic

7. Division   Branch   Group	Area Location Capability				
<b>DIV ALPHA / ZULU</b>	<b>EMS Responders &amp; Capability:</b>	Ambo 2 (McMahon EMPF/Jessen EMTF) Medic Team 3 (Palmer EMPF/Crawford EMTF)			
	<b>Equipment Available on Scene:</b>	ALS Ambo, ALS & BLS Kits			
	<b>Medical Emergency Channel:</b>	Command &/or VMED 28			
	<b>ETA for Ambulance to Scene:</b>	All Times Approximate			
	<b>Air:</b>	Minimum 1 hr			
	<b>Ground:</b>	Minimum 20 min			
	<b>Approved Helispot:</b>	H10	H20	H30 (Rimrock Helispot)	
	<b>Lat:</b>	36 20.504	36 20.726	36 21.549	
	<b>Long:</b>	105 03.658	105 03.969	105 04.280	
<b>DIV CHARLIE</b>	<b>EMS Responders &amp; Capability:</b>	Use Ambo 2 assigned to Div Z			
	<b>Equipment Available on Scene:</b>	None			
	<b>Medical Emergency Channel:</b>	Command &/or VMED 28			
	<b>ETA for Ambulance to Scene:</b>	All Times Approximate			
	<b>Air:</b>	Minimum 1 hr			
	<b>Ground:</b>	Minimum 45 min			
	<b>Approved Helispot:</b>	H30 (Rimrock Helispot)			
	<b>Lat:</b>	36 21.549			
	<b>Long:</b>	105 04.280			
<b>DIV KILO</b>	<b>EMS Responders &amp; Capability:</b>	No Medical Resources Assigned			
	<b>Equipment Available on Scene:</b>	None			
	<b>Medical Emergency Channel:</b>	Command &/or VMED 28			
	<b>ETA for Ambulance to Scene:</b>	All Times Approximate			
	<b>Air:</b>	Minimum 1 hr			
	<b>Ground:</b>	Minimum 1 hr			
	<b>Approved Helispot:</b>	H33	H24	H26	H28 H37
	<b>Lat:</b>	36 22.688	36 25.483	36 24.824	36 25.499 36 23.836
	<b>Long:</b>	105 03.985	105 08.839	105 07.016	105 06.204 105 03.607
<b>DIV MIKE</b>	<b>EMS Responders &amp; Capability:</b>	AMBO 1 (Apodaca EMPF/Goettee EMTF),; Santa Fe REMS Team (Anstine EMPF, Lopez EMPF, Miller AEMF, Hayman AEMF); Medic Team 5 (Krause EMPF/Gonzales EMTF)			
	<b>Equipment Available on Scene:</b>	ALS Ambo; ALS & BLS Kits, Technical Equipment & UTVs			
	<b>Medical Emergency Channel:</b>	Command &/or VMED 28			
	<b>ETA for Ambulance to Scene:</b>	All Times Approximate			
	<b>Air:</b>	Minimum 1 hr			
	<b>Ground:</b>	Minimum 1 hr			
	<b>Approved Helispot:</b>	H76	H38		
	<b>Lat:</b>	36 26.901	36 25.529		
	<b>Long:</b>	104 57.590	105 02.552		
<b>DIV OSCAR</b>	<b>EMS Responders &amp; Capability:</b>	Ambo 3 (Bond EMPF/ Gronewald EMTF)			
	<b>Equipment Available on Scene:</b>	ALS Ambo			
	<b>Medical Emergency Channel:</b>	Command &/or VMED 28			
	<b>ETA for Ambulance to Scene:</b>	All Times Approximate			
	<b>Air:</b>	Minimum 1 hr			
	<b>Ground:</b>	Minimum 1 hr			
	<b>Approved Helispot:</b>	H55	H60	H70	H78
	<b>Lat:</b>	36 21.679	36 22.124	36 22.532	36 22.623
	<b>Long:</b>	105 01.075	105 01.430	104 59.821	104 57.249

# MEDICAL PLAN (ICS 206 WF)

Controlled Unclassified Information//Basic

DIV  PAPA	<b>EMS Responders &amp; Capability:</b> Medic Team 1 (Hayes EMPF/Rone EMTF)						
	<b>Equipment Available on Scene:</b> ALS & BLS Kits						
	<b>Medical Emergency Channel:</b> Command &/or VMED 28						
	<b>ETA for Ambulance to Scene:</b> All Times Approximate						
	<b>Air:</b> Minimum 1 hr						
	<b>Ground:</b> Minimum 20 min						
	<b>Approved Helispot:</b> H45 H50						
	<b>Lat:</b> 36 21.180 36 21.527						
	<b>Long:</b> 105 02.226 105 02.160						
IA  GROUP	<b>EMS Responders &amp; Capability:</b> None/911						
	<b>Equipment Available on Scene:</b> None						
	<b>Medical Emergency Channel:</b> Command &/or VMED 28						
	<b>ETA for Ambulance to Scene:</b> All Times Approximate						
	<b>Air:</b> UNK						
	<b>Ground:</b> UNK						
	<b>Approved Helispot:</b> None						
	<b>Lat:</b>						
<b>Long:</b>							
<b>8. Name &amp; Location</b>							
<b>Remote Camp Location(s)</b>							
BASE  CAMP  1115 Highway 21, Cimarron NM 87714	<b>Point of Contact:</b> Jesse Hernandez MEDL (520)-560-2742						
	<b>EMS Responders &amp; Capability:</b> Medic Team 4 (Estrada EMPF/Racicot EMTF) AMBO 1 & AMBO 2 (rotate nightly)						
	<b>Equipment Available on Scene:</b> 500 man kit						
	<b>Medical Emergency Channel:</b> Command &/or VMED 28						
	<b>ETA for Ambulance to Scene:</b> All Times Approximate						
	<b>Air:</b> Minimum 1 hr						
	<b>Ground:</b> Minimum 30 min day/ Minimum 10 min night						
	<b>Approved Helispot:</b> H79						
	<b>Lat:</b> 36 21.922						
	<b>Long:</b> 104 55.717						
ICP  132 North Collison, Cimarron NM 87714	<b>Point of Contact:</b> Alan Schuster MEDL (928-533-6231) Jeff Hatch MEDL (435)-414-3521						
	<b>EMS Responders &amp; Capability:</b> Raton Dispatch 575-445-2704 or 505-272-3115 or 911						
	<b>Equipment Available on Scene:</b> 100 man Kit						
	<b>Medical Emergency Channel:</b> Command &/or VMED 28						
	<b>ETA for Ambulance to Scene:</b> All Times Approximate						
	<b>Air:</b> Minimum 30min Dependent on availability						
	<b>Ground:</b> Minimum 10min Dependent on availability						
	<b>Approved Helispot:</b> Wayne Baker Heliport						
	<b>Lat:</b> N 36 30.761						
	<b>Long:</b> W 104 55.484						
<b>9. Prepared By (Medical Unit Leader)</b>		<b>10. Date/Time</b>		<b>11. Reviewed by Safety Officer &amp; Medical Command Officer</b>		<b>12. Date/Time</b>	
Alan Schuster (928)-533-6231 Jeff Hatch (435)-414-3521 		07/10/2018 @2100		Bill Kornrumph   Troy Lutrick 		07/10/2018 @2100	



# MEDICAL PLAN (ICS 206 WF)

Controlled Unclassified Information//Basic

Medical Incident Report					
<b>FOR A NON-EMERGENCY INCIDENT, WORK THROUGH CHAIN OF COMMAND TO REPORT AND TRANSPORT INJURED PERSONNEL AS NECESSARY.</b>					
<b>FOR A MEDICAL EMERGENCY: IDENTIFY ON SCENE INCIDENT COMMANDER BY NAME AND POSITION AND ANNOUNCE "MEDICAL EMERGENCY" TO INITIATE RESPONSE FROM IMT COMMUNICATIONS/DISPATCH.</b>					
<b>Use the following items to communicate situation to communications/dispatch.</b>					
<b>1. CONTACT COMMUNICATIONS / DISPATCH</b> (Verify correct frequency prior to starting report) <i>Ex: "Communications, Div. Alpha. Stand-by for Emergency Traffic."</i>					
<b>2. INCIDENT STATUS:</b> Provide incident summary (including number of patients) and command structure. <i>Ex: "Communications, I have a Red priority patient, unconscious, struck by a falling tree. Requesting air ambulance to Forest Road 1 at (Lat./Long.) This will be the Trout Meadow Medical, IC is TFLD Jones. EMT Smith is providing medical care."</i>					
Severity of Emergency / Transport Priority	<input type="checkbox"/> <b>RED / PRIORITY 1 Life or limb threatening injury or illness. Evacuation need is IMMEDIATE</b> <i>Ex: Unconscious, difficulty breathing, bleeding severely, 2° - 3° burns more than 4 palm sizes, heat stroke, disoriented.</i> <input type="checkbox"/> <b>YELLOW / PRIORITY 2 Serious Injury or illness. Evacuation may be DELAYED if necessary.</b> <i>Ex: Significant trauma, unable to walk, 2° - 3° burns not more than 1-3 palm sizes.</i> <input type="checkbox"/> <b>GREEN / PRIORITY 3 Minor Injury or illness. Non-Emergency transport</b> <i>Ex: Sprains, strains, minor heat-related illness.</i>				
Nature of Injury or Illness & Mechanism of Injury			<i>Brief Summary of Injury or Illness (Ex: Unconscious, Struck by Falling Tree)</i>		
Transport Request			<i>Air Ambulance / Short Haul/Hoist Ground Ambulance / Other</i>		
Patient Location			<i>Descriptive Location &amp; Lat. / Long. (WGS84)</i>		
Incident Name			<i>Geographic Name + "Medical" (Ex: Trout Meadow Medical)</i>		
On-Scene Incident Commander			<i>Name of on-scene IC of Incident within an Incident (Ex: TFLD Jones)</i>		
Patient Care			<i>Name of Care Provider (Ex: EMT Smith)</i>		
<b>3. INITIAL PATIENT ASSESSMENT:</b> Complete this section for each patient as applicable (start with the most severe patient)					
Patient Assessment: See IRPG page 106					
Treatment:					
<b>4. TRANSPORT PLAN:</b>					
Evacuation Location (if different): (Descriptive Location (drop point, intersection, etc.) or Lat. / Long.) Patient's ETA to Evacuation Location:					
Helispot / Extraction Site Size and Hazards:					
<b>5. ADDITIONAL RESOURCES / EQUIPMENT NEEDS:</b>					
<i>Example: Paramedic/EMT, Crews, Immobilization Devices, AED, Oxygen, Trauma Bag, IV/Fluid(s), Splints, Rope rescue, Wheeled litter, HAZMAT, Extrication</i>					
<b>6. COMMUNICATIONS: Identify State Air/Ground EMS Frequencies and Hospital Contacts as applicable</b>					
Function	Channel Name/Number	Receive (RX)	Tone/NAC *	Transmit (TX)	Tone/NAC *
COMMAND					
AIR-TO-GRND					
TACTICAL					
<b>7. CONTINGENCY: Considerations:</b> If primary options fail, what actions can be implemented in conjunction with primary evacuation method? Be thinking ahead.					
<b>8. ADDITIONAL INFORMATION:</b> Updates/Changes, etc.					
<b>REMEMBER:</b> Confirm ETA's of resources ordered. Act according to your level of training. Be Alert. Keep Calm. Think Clearly. Act Decisively.					