

MORRIS CREEK

NM-N2S-000489

Incident Action Plan

SOUTHWEST AREA



Financial Codes

PNLXN1 (1502) [P]

GPS Points can be collected in either WGS84 OR NAD83

Morris Creek Fire Information: (575) 383 4597 8am to 9pm

7/12/2018 thru 7/12/2018

0600 to 2000


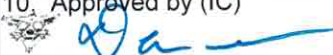
SOUTHWEST AREA



VALUES AT RISK

- **Emergency Responders and the Public**
- **CS Ranch and associated infrastructure**
- **UU Bar Ranch and associated infrastructure**
- **Philmont Scout Ranch and associated infrastructure**
- **State Trust Lands**
- **Watersheds**
- **Grazing Lands**
- **Local Infrastructure, Utilities and Power Lines**

Incident Objectives List (ICS 202)

1. Incident Name	2. Date Prepared	3. Time Prepared
MORRIS CREEK	7/11/2018	1800
4. Operational Period (Date and Time)		
From: 7/12/2018 at: 0600	From: 7/12/2018	at: 2000
5. General Control Objectives for the Incident (include Alternatives)		
* Engage the fire with tactics and strategies to provide the highest level of firefighter and public safety and where suppression actions have a high probability of success.		
* Minimize the fire effects from high severity fire and fire suppression activities where possible.		
* Utilize low intensity fire within T&E and sensitive species habitat and to minimize impacts to watersheds.		
* Maintain and enhance relationships with local land partners and neighboring communities. Provide regular incident updates to affected stakeholders.		
* Provide Initial Attack Response in area of the Temporary Flight Restriction (TFR), and assist New Mexico State Forestry with Initial Response as requested by the Cimarron District.		
*		
*		
*		
*		
6. Weather Forecast for Operational Period		
See Attached		
7. General Safety Message		
Driving is one of the largest hazards on any incident. When backing use a spotter when available. Ensure rules of engagement are followed, utilizing a risk management strategy. Maintain two to one work:rest ratio.		
8. Attachments (check if attached)		
Organization List (ICS 203) Assignment List (ICS 204) Communications Plan (ICS 205)	Medical Plan (ICS 206) Incident Map Traffic Plan	General Forecast Fire Behavior
9. Prepared by (Plans) 	10. Approved by (IC) 	

ORGANIZATION ASSIGNMENT LIST		9. Operations Section	
1. Incident Name		Operations	DARRELL WILLIS / AARON HULBURD
MORRIS CREEK			KEN WATKINS / TRUE BROWN (t)
2. Date	3. Time	a. Branch I - Division/Groups	
7/11/2018	1800	Branch Director	
4. Operational Period		Deputy	
From: 7/12/2018 0600	To: 7/12/2018 2000	DIVISION ALPHA / ZULU	SHELBY ERICKSON
5. Incident Commander and Staff		DIVISION CHARLIE	
Incident Commander	DAVE GESSER	DIVISION KILO	
Deputy	MARK BERNAL (t)	DIVISION MIKE	CORY CARLSON
Safety Officer	BILL KORNRUMPH	DIVISION OSCAR	BRAD JOHNSON / LEVI GUFFEY (t)
Information Officer	SHARMA CHAVEZ / SANDRA LOPEZ	DIVISION PAPA	B. DAVIDSON / M. ROSENGARTAN (t)
Liaison Officer	PETE SMITH / TOM VIGIL (T)	DIVISION IA GROUP	MARIO OROZCO
Human Resources	DAVINA DIAZ	DIVISION	
6. Agency Representative		b. Branch II - Division/Groups	
Agency	Name	Branch Director	
DISTRICT FORESTER	ERNIE LOPEZ	Deputy	
FIRE MANAGEMENT OFFICER	CHRIS ROMO		
DIST. TIMBER MGMT OFFICER	ARNIE FRIEDT		
RESOURCE ADVISOR	JOHN CELLEY		
		c. Branch III - Division/Groups	
7. Planning Section		Branch Director	
Chief	TROY LUTRICK	Deputy	
Deputy	C. VANDRIEL / J. THORNBURG (t)		
Resource Unit	BILL KUAMOO		
Situation Unit	SONYA FEASTER		
Situation Unit	DON WEAVER (t)		
Documentation Unit	PHIL SETTLES		
Demobilization Unit	JIM COOLEY		
Training Specialist	MICHAEL WILSON		
Training Specialist	JONENA HEARST (t)	d. Air Operations Branch	
Status Check-in	BOB SCABBY	Air Operations Branch Director	
ITSS	BLAKE MILLER	Air Support Supervisor	KEITH BORGHOFF
GISS	M. LEHR / S. WALTERSHEID	Air Attack Supervisor	ALANNA ENGLISH
IMET	ROBERT RICKEY	Helibase Manager	
FBAN	STEWART TURNER	Air Tanker Coordinator	
GISS- TECH SPEC	DAVID TYLER (T)	10. Finance Section	
8. Logistics Section		Chief	KEN LEAKE
Chief	SUSAN CORNETT	Deputy	MEGAN MACHT (t)
Deputy	JEFF HAMMOND (t)	Time Unit Leader	KAREN JONES
Ordering Manager		Equipment Time	GEORGIA BURNS
Supply Unit	DONALD YEE	Equipment Time	
Facilities Unit	DANIEL COMELLA	Equipment time	
Ground Support Unit		Personnel Time	ANGELA SANDOVAL
Communications Unit	MIKE NORMAN	Cost Unit	DONNA SANDERS
Communications Unit	MARTIN JOHNSON / MARK SPANN		
Medical Unit	ALAN SCHUSTER	Prepared by	
Medical Unit	JEFF HATCH	<i>Roby</i>	<i>Resuet</i>
Medical Unit	JESSE HERNANDEZ		
Base Camp Manager	MAYLON BROWN		



Fire Weather Forecast



FORECAST NO: 9
PREDICTION FOR: Thursday
SHIFT DATE: July 12 2018

INCIDENT: Morris Creek
UNIT: State of New Mexico Cimarron District
SIGNED: *Robert Rickey*

FORECAST ISSUED: 7/11/2018 at 2000

Incident Meteorologist (IMET)

Weather Discussion: Moisture will continue to increase across the area leading to another round of scattered to numerous showers and thunderstorms. The primary hazards from these storms will be frequent lightning and gusty outflow winds. In addition, periods of heavy rainfall will lead to an increased risk of flash flooding, and a Flash Flood Watch has been issued for the area from 1100 today through 0300 Friday. Good chances for showers and thunderstorms continue on Friday and Saturday.

WEATHER FORECAST:

Today:

Weather: Partly cloudy, becoming mostly cloudy with showers and thunderstorms likely in the afternoon. Expect gusty and erratic winds in the vicinity of storms.

High Temperatures: 72-76

Min RH: 37-41%

20-FOOT WINDS: Ridge: South-Southwest 5 to 9 mph with gusts to 18 mph.
Valley: Upslope/Upvalley 5 to 9 mph with gusts to 15 mph.

CWR (>=0.10")...60% LAL...4 Haines Index...3 (Low)

Mixing Height...9000 ft AGL Transport Wind...Southwest 7 mph

Tonight:

Weather: Mostly Cloudy with a chance of showers and thunderstorms.

Low Temperatures: 49-53

Max RH: 87-91%

20-FOOT WINDS: Ridge: Northwest 4 to 8 mph.
Valley: Downslope/Downvalley 3 to 6 mph.

CWR (>=0.10")....30% LAL...3 Haines Index...2 (Very Low)

Outlook for Friday:

Weather: Mostly cloudy with afternoon showers and thunderstorms likely. Expect gusty and erratic winds in the vicinity of storms.

High Temperatures: 69-73

Min RH: 47-51%

20-FOOT WINDS: Ridge: South 4 to 8 mph with gusts to 15 mph.
Valley: Upslope/Upvalley 4 to 8 mph with gusts to 15 mph.

CWR (>=0.10")...60% LAL...4 Haines Index...2 (Very Low)

Mixing Height...8000 ft AGL Transport Wind...South 8 mph

Extended Outlook for Saturday:

Weather: Mostly cloudy with afternoon showers and thunderstorms likely. Expect gusty and erratic winds in the vicinity of storms.

High Temperatures: 68-72

Min RH: 52-56%

20-FOOT WINDS: Ridge: South-Southwest winds 5 to 9 mph with gusts to 18 mph.
Valley: Upslope/Upvalley 5 to 9 mph with gusts to 15 mph.

CWR (>=0.10")...60% LAL...4 Haines Index...2 (Very Low)

Mixing Height...8000 ft AGL Transport Wind...South-southeast 8 mph

Sunrise...0552

Sunset...2019



← IRAWS near Morris Creek Fire

FIRE BEHAVIOR FORECAST

FORECAST NUMBER: 9	TYPE OF FIRE: Wildland Fire
FIRE NAME: Morris Creek	OPERATIONAL PERIOD: July 12
DATE ISSUED: July 11, 2018	TIME ISSUED: 2030
UNIT: State Of New Mexico, Cimarron District	SIGNED: Typed/printed: Stewart Turner, FBAN

INPUTS

WEATHER SUMMARY: For Specifics Please see the attached Incident Weather Forecast.

WEATHER: Partly cloudy, becoming mostly cloudy with showers and thunderstorms likely in the afternoon.

MAX TEMP: 72 to 76° **MIN RH:** 37 to 41%

20 FOOT WINDS: Ridge: South-Southwest 5 to 9 mph with gusts to 18 mph.

Valley: Upslope/Upvalley 5 to 9 mph with gusts to 15 mph.

CHANCE OF WETTING RAIN ($\geq 0.10''$): 60% Haines Index: 3 (low). LAL 4

FUELS: The fire is burning through mixed conifer and Ponderosa Pine stands, and grass fuels.

Minimum Fine Dead Fuel Moisture: 8%, 10 Hour DFM: 10%, 100 Hour DFM: 13%, 1000 Hour DFM: 10%

Cimarron RAWs: ERC – 56

OUTPUTS

FIRE BEHAVIOR

GENERAL:

Recent precipitation will moderate fire behavior today. Expect to see smoldering fire behavior around the fire. The larger fuels will continue to hold heat until they are consumed or extinguished. Gusty winds will expose any heat that is hidden. Wind can overcome humidity increasing short term fire behavior. Probability of Ignition: 40% during the heat of the day with the 70% cloud cover.

SPECIFIC:

Division A/Z: Smoldering fire behavior is expected.

Rayado Canyon: Smoldering fire behavior is expected with a slight chance of low fire behavior. Cloud cover, humidity, and high fine dead fuel moistures will limit fire behavior.

Initial Attack: Expect to see low fire behavior with gusty outflow winds. Proper size up is important to estimate potential and fire behavior.

AIR OPERATIONS:

Thunderstorms and outflow wind may hinder air operations.

SAFETY

Common Denominators of fire behavior on tragedy fires:

- *Most incidents happen on the smaller fires or on isolated portions of larger fires.*
- *Most fires are innocent in appearance before unexpected shifts in wind direction and/or speed results in "flare-ups" or "extreme fire behavior." In some cases, tragedies occur in the mop-up stage.*
- *Flare-ups generally occur in deceptively light fuels, such as grass and light brush.*
- *Fires run uphill surprisingly fast in chimneys, gullies, and on steep slopes.*
- *Some suppression tools, such as helicopters or airtankers, can adversely affect fire behavior. The blasts of air from low flying helicopters and airtankers have been known to cause flare-ups.*

1. Incident Name:	3. Branch	Division/Group
MORRIS CREEK		ALPHA / ZULU
2. Operational Period:		
Date/Time From: 7/12/2018 0600	Date/Time To: 7/12/2018 2000	

4. Operations Personnel								
OPERATIONS CHIEF	DARRELL WILLIS / AARON HULBURD KEN WATKINS / TRUE BROWN (I)				BRANCH DIRECTOR			
DIVISION/GROUP SUPERVISOR	SHELBY ERICKSON				AIR OPERATION DIRECTOR			
					AIR ATTACK SUPERVISOR		ALANNA ENGLISH	
MEDICAL GROUND TRANSPORT TIME	Less than hours	2	X	2 HOURS TO 4 HOURS	MORE THAN 4 HOURS	FIELD MEDICAL OFFICER		ALAN SCHUSTER
						SAFETY OFFICER		IVAN CUPP

5. Resources Assigned this Period							
Type/Kind	Resource Name	RES #	LWD	Leader	# Persons	Drop Off PT./Time	Pick Up PT./Time
T6	AF3572	E-61	7/13	GARRETT HANSON	3	0600 / UU BAR	2000 / UU BAR
T6	E-55	E-59	7/16	BILL EASTMAN	3	0600 / UU BAR	2000 / UU BAR
						0600 / UU BAR	2000 / UU BAR
						0600 / UU BAR	2000 / UU BAR
						0600 / UU BAR	2000 / UU BAR
						0600 / UU BAR	2000 / UU BAR
						0600 / UU BAR	2000 / UU BAR
						0600 / UU BAR	2000 / UU BAR
						0600 / UU BAR	2000 / UU BAR
						0600 / UU BAR	2000 / UU BAR
						0600 / UU BAR	2000 / UU BAR
						0600 / UU BAR	2000 / UU BAR
						0600 / UU BAR	2000 / UU BAR
						0600 / UU BAR	2000 / UU BAR
						0600 / UU BAR	2000 / UU BAR
						0600 / UU BAR	2000 / UU BAR
						0600 / UU BAR	2000 / UU BAR
						0600 / UU BAR	2000 / UU BAR
						0600 / UU BAR	2000 / UU BAR
						0600 / UU BAR	2000 / UU BAR

6. Control Operations/Work Assignment		
TASK	PURPOSE	END STATE
HOLD AND SECURE FIRELINE FROM ALPHA / CHARLIE BREAK TOWARDS DIVISION ZULU / PAPA BREAK.	MINIMIZE FIRE SPREAD TO THE SOUTH, WEST AND EAST TO LESSEN IMPACT TO WATERSHED AND VALUES AT RISK.	FIRE CONTAINED AS SAFELY AND EFFICIENTLY AS POSSIBLE AND NEGATIVE IMPACTS FROM SUPPRESSION EFFORTS AND FIRE ARE MINIMIZED.

7. Special Instructions

IDENTIFY REHAB NEEDS AND IMPLEMENT AS NEEDED.

VALUES AT RISK - POWER LINES.

8. Division/Group Communication Summary						
Function	Channel	RX Frequency N/W	RX Tone/NAC	TX Frequency N/W	TX Tone/NAC	Mode
TACTICAL	1	168.0500	136.5	168.0500	136.5	
COMMAND	8	169.5375	136.5	164.7125	136.5	
AIR TO GROUND	14	169.2000		169.2000		

9. Prepared By (Resource Unit Leader) BILL KUAMOO	Approved By (Planning Section Chief) [Signature]	Date 7/11/2018	Time 1800
---	--	--------------------------	---------------------

Ray Res (T) *[Signature]* *ASC 2(+)*

AIR OPERATIONS SUMMARY

Prepared by: Dan Sullivan AOBD

PREPARED DATE/TIME: 7-11-18 1800

- INCIDENT NAME: Morris Creek Fire
- OPERATIONAL PERIOD DATE: Wednesday 7-12-18
START TIME: 0600 END TIME: 2030 SUNRISE: 0554 SUNSETS: 2015

3. REMARKS (Safety Notes, Hazards, Air Operations Special Equipment, etc.):

- Advise Helicopters/Helibase/Air Attack immediately of any unidentified aircraft/Drones within the fire area/TFR
- Keep track of gallons taken per dip site

4. READY ALERT AIRCRAFT: H-OVR (Fire A/C) Medivac - refer to medical plan.	5. TFR #8/5611 5-NM 13,000 msl	8. FIXED WING	# Avail / Type / Make-Model / FAA N# / Base(s)
	(A-9)	ATGS Aircraft	1GB – English

6. PERSONNEL	Phone	7. FREQUENCIES		
		Air / Air (TFR) Primary	AM	FM
AOBD:		123.8250 (A-7)		
ASGS Keith Borghoff	928-7131306			
Morris Creek Helibase Luke Holden	(505)235-4351	A/G -1	169.2000 (A-8)	
ATGS: Alanna English	928-699-0935			
ATGS:		Air-Medical Helicopters	VMED 28	155.3400 TX Tone 156.7
Dispatch Aircraft Desk (Taos)	575-758-6208	Air Guard		168.625 TX/RX Tone 110.9



TFR MAP

- H-10 36 20.504 x 105 03.658 Type 1
- H-20 36 20.726 x 105 03.969 Type 3
- H-30 36 21.549 x 105 04.280 Type 2 (Rimrock)
- H-33 36 22.688 x 105 03.985 Type 3
- H-45 36 21.180 x 105 02.226 Type 3
- H-50 36 21.527 x 105 02.160 Type 3
- H-55 36 21.679 x 105 01.075 Type 3
- H-60 36 22.124 x 105 01.430 Type 2
- H-65 36 22.191 x 105 01.321 Type 2
- H-70 36 22.532 x 104 59.821 Type 1
- H-80 36 20.875 x 104 56.192 Type 2

See OPS MAP FOR Additional H.S.

9. Helicopters (Use Additional Sheets as Necessary)

FAA N#	TY	MAKE/MODEL	BASE	AVAIL	START	REMARKS
1KA (A-2)	1	K-Max	Angel Fire	0730	0800	JJ Stone 530-251-3078
3FH (A-12)	1	S-70 FireHawk	Angel Fire	0730	0800	Morgan Meserth (208) 861-2346
OVR (A-29)	3	AS350 B3	Angle Fire	0730	0800	Joe Scholz 505-270-5525

MISC. INFORMATION

A/C orders DIVS to Ops, or through Air Attack if up.
H-78 PSD HS-36 22.623 x 104 57.249

Approved By: Dan Sullivan AOBD

HEALTH AND SAFETY MESSAGE

SAFETY starts with *YOU*

We are ALL accountable for SAFE behaviors

INCIDENT: **Morris Creek**

DATE: **July 12, 2018** Operational Period: **0600-2000**

Major Hazards and Risks:

THUNDERSTORM SAFETY – Review IRPG Page 21
DRIVING CONDITIONS (Highways and dirt roads);
HEAVY EQUIPMENT, UTVs COMPLACENCY, FATIGUE

Narrative:

Serious accidents are preceded by 100,000 to 250,000 unsafe behaviors/acts! - Actions that are most deadly are "High Risk - Low Repetition", those are dangerous tasks we don't do often (sound familiar).

COMMON DEMONINATORS of a TRAGEDY = they didn't think it would happen to them; the specter of **COMPLACENCY** says to you: "Hey this is no problem, nothing is happening here, it's just a holding action, or mop up, you've done it this way 250,000 times before, and it's so much easier." **YOU ARE SETTING YOURSELF UP. ENSURE L.C.E.S. IS ESTABLISHED AT ALL TIMES**

Now (not during an accident review) is the time to review what you are doing, and how you are doing it. Ask yourself (& others):

- *** What am I doing? Am I involved with high risk/low frequency events (not done often)?
Have I done a LOOK UP-LOOK DOWN- LOOK AROUND? What is predictable here? How is it preventable??
Have I done a SAFETY work assessment of where I'm working??
- *** Have I identified hazards and unsafe behaviors?
What have I done to mitigate or eliminate them?
- *** Have I reviewed the Standard Firefighting Orders?
Have I identified WATCH OUT Situations?
Have I told others what and where they are, and how to avoid or eliminate them?

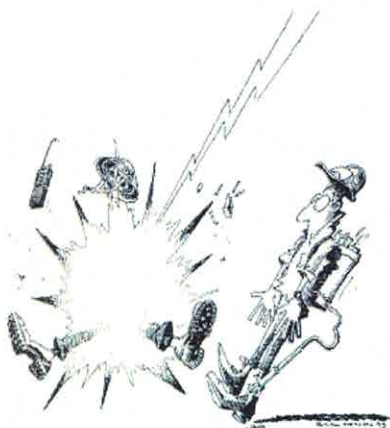
ROADS- Use caution on all of these mountain roads. Slow down, use headlights and wear your seat belts

PPE SHALL BE WORN AT ALL TIMES!!!

Fire Order of the Day

Know what your fire is doing at all times

Watch Out Situation of the Day



4. UNFAMILIAR WITH WEATHER AND LOCAL FACTORS INFLUENCING FIRE BEHAVIOR

Mitigate or Change Tactics When Faced With

- ⇒ Indirect Fireline
- ⇒ High Wind Conditions
- ⇒ Reburn Potential
- ⇒ Lack of Communications With All Forces
- ⇒ Spotting Becomes Common
- ⇒ Downhill Line Construction
- ⇒ Fatigued Crews
- ⇒ Re-ignition Becoming Common

GO SLOW ON THE H2O !!!



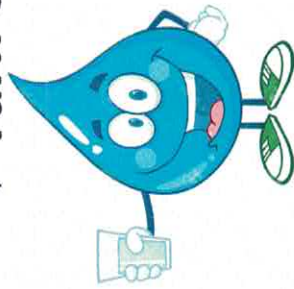
WATER CRISIS IN CIMARRON

CIMARRON is on Level 4 water restrictions.

Water here is **LIQUID GOLD**

YOU CAN HELP with these 4 water-saving tips during your stay:

- ◆ Take a 2 minute shower
- ◆ Only flush if necessary
- ◆ Reuse your towels
- ◆ Turn off faucet while showering, shaving or brushing your teeth

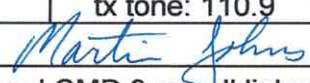


But remember to DRINK plenty of it!



Incident Radio Communications Plan (ICS 205) Day Operations				
Incident Name: Morris Creek Fire				Operational Period: 7/12/2018
Channel	Function	Frequency	Narrowband	Assignment & Remarks
1	TAC 1	RX&TX168.0500 rx&tx tone: 136.5	Narrow	Div A/Z
2	TAC 2	RX&TX168.2000 rx&tx tone: 136.5	Narrow	Div C
3	TAC 3	RX&TX168.6000 rx&tx tone: 136.5	Narrow	Div K
4	TAC 4	RX&TX166.7250 rx&tx tone: 136.5	Narrow	Div M
5	TAC 5	RX&TX166.7750 rx&tx tone: 136.5	Narrow	DIV O
6	TAC 6	RX&TX168.2500 rx&tx tone 136.5	Narrow	DIV P
7	CMD 7	RX:170.000 TX:166.6750 tx&rx tone: 136.5	Narrow	Command on Rayado Mesa
8	CMD 8	RX:169.5375 TX:164.7125 tx&rx tone: 136.5	Narrow	Command on Angel Fire
9	CMD 9	RX:169.9875 TX:163.0375 tx&rx tone: 136.5	Narrow	Command on Green Mtn
10	NMSF FIRE	RX&TX159.4200 tx tone: 156.7	Narrow	Cimaron District Office
11	NMSF TAC	RX&TX159.2250	Narrow	I/A
12	ST FIRE	RX&TX 154.3100	Narrow	Local Mutual Aid
13	VMED28	RX &TX155.3400 tx tone 156.7	Narrow	Medical Emergency
14	A/G PRI	RX&TX169.2000	Narrow	Primary Air to Ground
15	A/G SEC	RX&TX167.9875	Narrow	Secondary Air to Ground
16	Air Guard	RX&TX168.625 tx tone: 110.9	Narrow	Emergency Use only

Prepared by: Martin Johns COML



Note: CMD 7, CMD 8 and CMD 9 are all linked together. If one doesn't work, try the another.



Human Resource Message



LEADERSHIP – *IRPG, pg. viii.-ix

RESPECT

Know your subordinates and look out for their well-being

- Put the safety of your subordinates above all other objectives.
- Take care of your subordinates needs.
- Resolve conflicts between individuals on the team.

Keep your subordinates informed

- Provide accurate and timely briefings.
- Give the reason (intent) for assignments and tasks.
- Make yourself available to answer questions at appropriate times.

Build the team

- Conduct frequent debriefings with the team to identify lessons learned.
- Recognize individual and team accomplishments and reward them appropriately.
- Apply disciplinary measures equally.

Employ your subordinates in accordance with their capabilities

- Observe human behavior as well as fire behavior.
- Provide early warning to subordinates of tasks they will be responsible for.
- Consider team experience, fatigue, and physical limitations when accepting assignments.

INTEGRITY

Know yourself and seek improvement

- Know the strengths and weaknesses in your character and skill level.
- Ask questions of peers and superiors.
- Actively listen to feedback from subordinates.

Seek responsibility and accept responsibility for your actions

- Accept full responsibility for poor team performance.
- Credit subordinates for good performance.
- Keep your superiors informed of your actions.

Set the example

- Share the hazards and hardships with your subordinates.
- Don't show discouragement when facing setbacks.
- Choose the difficult right over the easy wrong.

*Incident Response Pocket Guide (April 2018)

Davina Diaz, HRSP, located at the Cimarron Elementary, down hall and left of the turquoise garden box.

Attention

Trainees and Trainers

The Training Specialist will be closing out all training records as of **12:00 hours on 7/13/2017**.

Please see the TNSP at the ICP to complete your training package. If you cannot make it to ICP before the cutoff time on that date do the following:

- Continue to fill out your task book for those tasks you have completed and the associated data items for the incident.
- Have your trainer complete an individual performance rating for your training assignment for this incident.
- If your trainer recommends you for certification to the home unit:
Make sure he or she fills out the section doing so, found on the inside of the front cover.

For those trainees that cannot make it to check out with the Training Specialist: The Training Specialist will send a letter explaining that your training records have been closed along with a copy of your data for the incident. The TNSP inform the home unit to request a copy of your performance review and check the status of the task book.

Jonena Hearst

Training Specialist
Southwest Incident Management Team 3

EMNRD NEW MEXICO STATE FORESTRY DIVISION GUIDELINES FOR FOREST FIRELINE REHABILITATION ON STATE AND PRIVATE LANDS

1. HAZARD TREES:

Remove downed timber or other obstructions (such as rocks) from roads, which may create post-fire safety hazards. Remove snags that may fall across firelines, roads, or onto structures near the fireline because of line construction or burnout. Buck any snags or live trees burned at bases removed due to posing a safety hazard into smaller four to six-foot sections to reduce the risk of attracting bark beetles and to aid in accelerating the decay process.

2. REDUCTION OF EROSION ON HAND LINES AND DOZER LINES:

Construct water bars on hand lines and dozer lines; this includes all interior and perimeter firelines constructed during fire suppression activities. Construct water bars diagonally (at 30 to 35 degrees) not perpendicular, to the suppression lines to divert runoff. Construct drains such that water flows into un-burned areas wherever possible. On steeper slopes water bars may need to be constructed in an alternating pattern to prevent additional erosion from runoff. Insure that water bars have open outlets to avoid restricting water flow. Mitigate or remove any downslope berms/dirt piles, resulting from blading operations, which may exist along the interior and the perimeter of firelines to avoid restricting water flow. Where possible, construct water bars where rocks, vegetation, or debris are below the outlet to dissipate water. Do not construct water bars to divert runoff directly into a stream course.

The following guidelines are to be used in the spacing of water bar construction:

Slope	Maximum Interval
0.0 – 4.9% slope	150 feet
5.0 – 9.9% slope	130 feet
10.0 – 14.9% slope	75 feet
15.0 – 40.0% slope	50 feet
40% slope and greater	20 feet

When dealing with multi-ownership, it may be easier to agree on one guideline for all water bar construction than trying to identify different landowners.

3. SEEDING:

Initiate seeding of suppression lines, safety zones, water bars, and other areas of disturbance the suppression effort created as soon as possible. The seed mix should be certified weed free and contain native species whenever possible. The seed mix will contain less than 0.6 percent weed content and no noxious weeds.

As an alternative to seed, hay/straw mulch can also be used on suppression lines; however, hay/straw mulch must be certified as noxious weed free.

4. **SLASH:**

Drop and buck all hangs-ups (pushed over trees) along dozer lines into four to six foot sections. Lop and scatter slash from fire line construction to less than three feet in height. Scatter slash back over the fire line. Do not place slash directly in contact with residual trees. This may only be possible on interior firelines. Remove slash in intermittent and perennial watercourses to above the high-water mark.

5. **ROADS:**

- a. Roads on state and private lands leading to Drop Points may need to be restored.
- b. Stabilize Drop Points, constructed turnarounds, helispots, helibases, and other disturbances. Refer to items 2, 3, and 4 above.
- c. Re-establish all drainage structures and bridges (culverts, cross drains, ditches, rolling dips, down drains, berms*) to pre-fire or functional conditions. Knock down or open any berms created to properly drain water and prevent channeling. Rolling dips should have open, free flowing, outlets that do not drain directly into water courses.
*Berms: a ridge of soil and debris along the edge of a fireline resulting from line construction.
- d. Replace damaged drains or drain aprons.
- e. Where needed, re-grade after suppression activities; stabilize and/or control erosion caused by road activity or upslope suppression activities.

6. **SAFETY ZONES:**

Treat safety zone construction by removing hang-ups and lopping slash to less than three feet in height. Treat slash and berms created during construction of safety zones. Remove berm and spread back into safety zone. Place slash on safety zone and treat as above in items 3 and 4.

7. **DEBRIS CLEAN UP:**

Collect and remove all trash and flagging from within fire area, staging areas, drop points, helispots, and helibase locations.

8. **OTHER STRUCTURES:**

Repair or replace all structures damaged during fireline construction activities (i.e. fences, gates, cattle guards, culverts, etc.).


9. **FIRELINE REHABILITATION INSPECTIONS:**

- a. As soon as it is safe to do so, appointed Forestry Division personnel shall conduct a pre-inspection of the hand line and dozer line to identify areas of rehabilitation concern.

- b. As soon as it is safe to do so, after rehabilitation has been completed by fire management personnel, appointed Forestry Division personnel shall verify that all rehabilitation has been executed in accordance with the above guidelines.

10. **Special Considerations:**

Additional rehabilitation may be required as the incident develops.

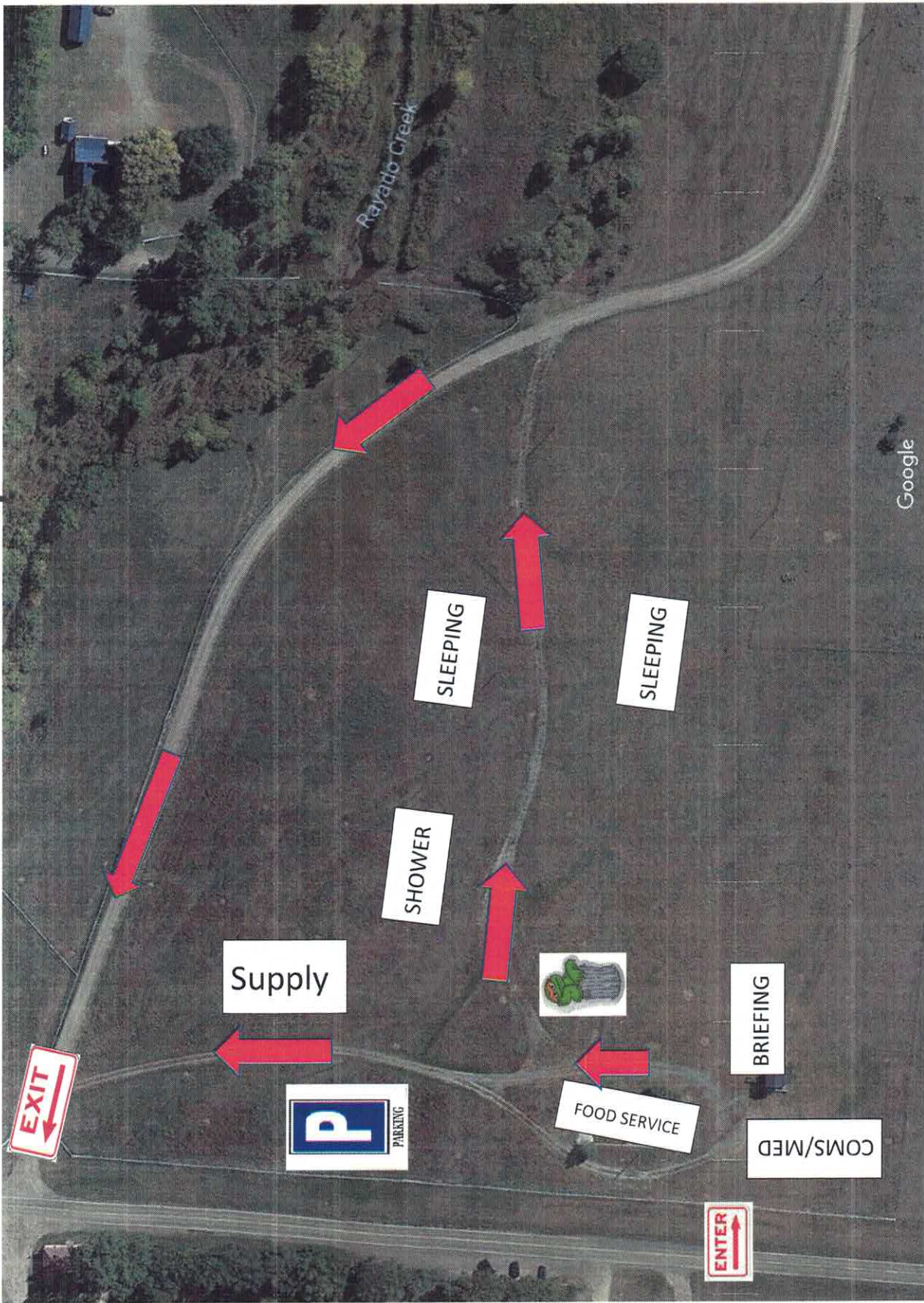


District Forester/Agency Representative 7/07/18
Date



Incident Commander 7-7-18
Date

Morris Creek Base Camp



DEMOB INFORMATION

7-12-2018

If you are on the attached DMOB LIST and have been camped at Philmont Base Camp, please check out with Supply at the Base Camp. Once you return your supplies they will give you a General Message Form to bring with you to ICP at Cimarron Middle School to turn in to the DMOB Unit Leader.

07/12/2018

TENTATIVE RELEASE

MORRIS CREEK US-NM-N2S-000489

EQUIPMENT

E-68	0700	(DOZ2)	FIRED UP LLC
E-38	0730	(ENG6)	ENGINE - T6 - ELEPHANTHEAD
E-30	0800	(PU)	PU 4X4 F250 NERV RENTAL
E-31	0800	(PU)	PU 4X4 F250 NERV RENTAL
E-46	0800	(WTT2)	WATER TENDER - TACTICAL - T2 -
E-8	0900	(AMBU)	WILDERNESS MEDISC, INC.
E-10	0930	(RES)	WILDERNESS MEDICS, INC.
E-11	1000	(RES)	WILDERNESS MEDICS, INC
E-12	1030	(RES)	WILDERNESS MEDICS, INC.

OVERHEAD

O-4	0630	(DIVS)	BEERY, ROCKY
O-52	0645	(TFLD)	ESCANDEL, JASON W
O-72	0700	(TFLD)	PERKINS, JUSTIN G
O-68	0730	(TFLD)	GUADIANA, MICHAEL JAKE
O-71	0745	(TFLD)	LEMMON, PAUL O
O-3	0800	(DIVS)	CEDENO, DANIEL
O-5	0815	(DIVS)	CABRAL, JOSHUA P
O-50	1200	(TFLD)	HOWARD, BRANDON K
O-94	1600	(RCDM)	FOSTER, SHAWN T
O-84	2200	(RADO)	BAILEY, DARRELL RAY

07/13/2018

TENTATIVE RELEASE

MORRIS CREEK US-NM-N2S-000489

OVERHEAD

O-10.7	0600	(SOF2)	REMINGTON, RICHARD C
O-10.22	0700	(GISS)	LEHR, MORGANNE M
O-21	1200	(PIOF)	KEARNS, LINDA
O-32	1400	(SOF2)	CUPP, IVAN S
O-7	1800	(ICT3)	PINO, EUGENE G
O-14	1800	(RADO)	SANCHEZ, KEVIN J

07/14/2018

TENTATIVE RELEASE

MORRIS CREEK US-NM-N2S-000489

OVERHEAD

O-20	1200	(PIO2)	LOPEZ, SANDRA
O-82	1500	(INCM)	FILLIS, CONNIE
O-18	1500	(COMT)	GIERYK, BRIAN
O-10.30	1600	(LSC2)	CORNETT, SUSAN E
O-10.48	1600	(FBAN)	TURNER, STEWART DEAN
O-10.49	1600	(GISS)	WALTERSCHEID, STEVEN

**INCIDENT
LINE SUPPLY ORDER FORM
(OSC/Division Supervisors Only)**

Date & Time Order Was Placed	Order Reference # (DIV + #)			Location for Delivery (Division/LZ/DP/Lat. Long)
DATE:			GROUND SUPPORT	
TIME:			HELICOPTER	
			TO BE PICKED UP BY @	

DATE NEEDED:	TIME NEEDED:
Order received in COMMUNICATIONS by: Name:	Time:
Order received in SUPPLY by: Name:	Time:
Order received in GROUND SUPPORT by: Name:	Time:
Order received in HELIBASE by: Name:	Time:
Order delivered/shipped to final location by: Name:	Time:

#	ITEM	QUANTITY	SHIPPED	PENDING	#	ITEM	QUANTITY	SHIPPED	PENDING
1.	Breakfast – Meals				31.	Lightweight Pump Kit			
2.	Lunch – Meals				32.	Hose – 1 ½” ft.			
3.	Dinner – Meals				33.	Hose – 1” ft.			
4.	MRE’s (# of Cases) 12/cs				34.	Hose – ¾ ” ft.			
5.	Cubies of Water – ea.				35.	Reducer – 1 ½” x 1”			
6.	Bottled Water - Case				36.	Reducer – 1” x ¾”			
7.	Gatorade – Case				37.	Gated “Y” – 1 ½” ea.			
8.	Batteries – AA/box 24 ea.				38.	Gated “Y” – 1” ea.			
9.	Batteries – AAA/C/D ea.				39.	Shut off valve ¾” ea.			
10.	Fuel – Unleaded – Gallons				40.	In – Line Tee 1 ½” x1” ea.			
11.	Fuel – Diesel – Gallons				41.	Nozzle – 1 ½” ea.			
12.	Fuel – Drip Torch (60/40 mix) gals.				42.	Nozzle – 1” ea.			
13.	Bar Oil – QT’s/Gallons				43.	Nozzle ¾”			
14.	2 cycle oil – (1 per gallon)				44.	First Aid Kit – 20 man ea.			
15.	Sleeping Bags – 25 degree				45.	Chainsaw Kit – ea.			
16.	Sleeping Bags – 40 degree				46.	DIV Pump Kit (next page) ea.			
17.	Plastic – roll/sq. ft.				47.	DIV Hose lay Kit (next page) ea.			
18.	Parachute Cord – roll/ft.				48.	Line Spike Hygiene Kit (next page) ea.			
19.	Shovels – ea.								
20.	Pulaski – ea.					MISC. Please list below			
21.	Combi – ea.								
22.	McLeod – ea.								
23.	Fussee – case								
24.	Drip Torch – Full/Empty								
25.	Backpack Pump – Full/Empty								
26.	Slingable Blivet – Suppression								
27.	Slingable Blivet – Drinking					Accountable Property #'s			
28.	Folding Tank 1000/1500 gals								
29.	Pumpkin 1500/3000/6000 gals								
30.	Mark III Pump Kit								

Team Ordering/ Timeline Process:

0600 – Morning Briefing, start of crew time.

1500 – DIVS to have next days resource order ready for OPS.

- Original food orders must be placed 6-hours, plus drive time, prior to actual feeding time.
- Last call to change food orders is 4-hours, plus drive time.
- All crew level orders will be placed through DIVS.
- DIVS will place all orders through Communications Unit.
- All orders will be tracked using the process found on the front of form.

Division Pump Kit			Division Hose Lay Kit		
Item	NFES#	Quantity	Item	NFES#	Quantity
Hose 1½”	1239	1000’	Hose 1½”	1239	3500’
Hose 1”	1238	1000’	Hose 1”	1238	1700’
Hose, ¾”	1016	500’	Hose, ¾”	1016	3000’
Tee, 1½” – 1”	731	4	Tee, 1½” – 1”	731	15
Nozzle, 1”	138	4	Nozzle, 1”	138	15
Nozzle, ¾”	136	4	Nozzle, ¾”	136	30
1½” Gated “Y”	231	4	Valve, 1½” Gated “Y”	231	5
1” Gated “Y”	2059	4	Valve, 1” Gated “Y”	2059	2
¾” Gated “Y”	272	4	Valve ¾” Gated “Y”	272	30
Reducers, 1½” – 1”	0010	4	Shut off valve ¾”	738	20
Reducers, 1” – ¾”	733	4	Reducers, 1½” – 1”	0010	10
Double Female 1”	710	1	Reducers, 1” – ¾”	733	10
Double Female 1½”	857	1	Double Female 1”	710	1
Fuel 5 Gal. To Match Pump	606	2	Double Female 1½”	857	1
2 Cycle Oil	341	2	Bag, Slingable Water	437	6

Pick One of the Pumps Below

Pump, Lightweight	670	1			
Pump Mark III	870	1			

Line Spike Hygiene Kit			Line Spike Hygiene Kit (continued)		
Trauma shears		1 ea	Latex or Nitrile gloves		1 box
Moleskin		3 ft	Benadryl		1 box
Gold Bond Blue Powder		5 ea	Spenco 2nd skin		3 boxes
Gold Bond Green Powder		2 ea	Ibuprofen (Advil)		25 ea
Gold Bond Yellow Powder		5 ea	Aminofen (Tylenol)		25 ea
Tolfanate Foot Powder		3 ea	Antiseptic Wipes		20 ea
Vet Wrap (Koflex)		6 ea	Sting Relief		20 ea
Throat Lozenges		40 ea	Baby Wipes		1 box
Hand Sanitizer		20 ea	Bactracin		10 ea
Bug Repellent		3 ea	Chap Stick		10 ea
Sun Screen		5 ea	Ziplock Bags		10 ea
Eye Wash		5 ea			

MEDICAL PLAN (ICS 206 WF)

Controlled Unclassified Information//Basic

1. Incident/Project Name		2. Operational Period					
Morris Creek Fire		0600-2000		07/12/2018			
3. Ambulance Services							
Name	Complete Address	Phone & EMS Frequency	Advanced Life Support (ALS)				
			Yes	No			
Cimarron EMS	133 N Jefferson Ave, Cimarron NM, 87714	Raton Dispatch @ 911 or 575-445-2704	X	X			
Raton EMS	127 Clark Ave Raton, NM 87740	Raton Dispatch @ 911 or 575-445-2704		X			
Angel Fire EMS	11 N Angel Fire Rd, Angel Fire, NM 87710	Red River dispatch @ 911 or 575-754-2333	X	X			
4. Air Ambulance Services							
Name	Phone	Type of Aircraft & Capability					
Classic Lifeguard	Raton Dispatch @ 911 or 575-445-2704	Helo @ Los Alamos, ~45min ETA to ICP, 24/7, VMED28					
Tristate Care flight	Raton Dispatch @ 911 or 575-445-2704	Helo @ Taos Airport, ~35min ETA to ICP, 24/7, VMED28 NOTE: Only able to respond to Angelfire Helibase					
Lifeguard Air Emergency	Raton Dispatch @ 911 or 575-445-2704	Helo @ ABQ Airport (Fixed wing also available), ~1 hr ETA to ICP, 24/7, VMED28					
Grand Canyon Short Haul 8PA	Taos Interagency dispatch 575-758-6208	Helo Short Haul, @ Emily Fire, Daylight Only, VMED28 NOTE: Extended response time					
New Mexico National Guard	Taos Interagency dispatch 575-758-6208	Helo Hoist, @ Santa Fe, ALS, 24/7, VMED28 NOTE: Extended response time					
Incident Helicopter OVR	Morris Creek Communications	Helo, @Angel Fire Helibase, Daylight Only, Incident Channels & VMED28 Medic Team 2 (Kahn EMPF/Becker EMTF)					
5. Hospitals							
Name Complete Address	GPS Datum – WGS 84 Coordinate Standard Degrees Decimal Minutes DD° MM.MMM' N - Lat DD° MM.MMM' W - Long		Approximate Travel Time From ICP Air Gnd		Phone	Helipad Yes No	Level of Care Facility
	Lat:	Long:					
Philmont Medical Clinic 10 Conejo Rd, Cimarron, NM	N 36 27.269	W 104 57.409	10 min	10 min	575-376-1149	X	Critical Access
Christus St Vincent Regional Medical Center 455 St Michaels Dr, Santa Fe	N 35 39.607	W 105 56.792	1 hr	2.5 hrs	505-913-3361	X	Level 3 Trauma Center
University of New Mexico 2211 Lomas Blvd NE Albuquerque NM 87106	N 35 05.277	W 106 37.124	1+ hr	3+ hrs	505-272-2411 Dr:888-866-7257	X	Level 1 Trauma Center Limited Burn Center Medical helicopters only
Miners Colfax Medical Center 203 Hospital Dr, Raton, NM	N 36 51.73	W 104 26.55	25 min	60 min	575-445-7700 ER:575-445-7703	X	Level 3 Trauma Center
Alta Vista Regional Hospital 104 Legion Dr, Las Vegas, NM 87701	N 35 37.417	W 105 12.642	45 min	1.5 hrs	505-426-3500 ER:505-426-3502	X	Acute Care Hospital
Holy Cross Hospital 1397 Weimer Rd, Taos NM, 87571	N 36 22.070	W 105 34.63	25 min	90 min	575-758-8883 ER:575-751-5835	X	Critical Access (no ortho)
University of Colorado Hospital/Burn Center 12605 E 16 th Ave Aurora Co 80045	N 39 44.530	W 104 50.545	2.5+hrs	5+ hrs	720-848-7583 Dr: 844-285-4555	X	Level 1 Trauma Center Burn Center
6. Other Resources	Name	Phone					
Extrication/Heavy Rescue	Cimarron & Raton	Raton Dispatch @ 911 or 575-445-2704					
Swift Water Rescue	Taos Fire Department	Taos Interagency Dispatch @ 575-758-6208 or 911					
Search & Rescue (SAR)	Philmont SAR	Raton Dispatch @ 911 or 575-445-2704 or New Mexico State Police Dispatch @ 575-445-5571					
Law Enforcement	Colfax Co SO or Cimarron PD	Raton Dispatch @ 911 or 575-445-2704 or New Mexico State Police Dispatch @ 575-445-5571					




MEDICAL PLAN (ICS 206 WF)

Controlled Unclassified Information//Basic

7. Division Branch Group	Area Location Capability				
DIV ALPHA/ ZULU	EMS Responders & Capability:	No Medical Resources Assigned			
	Equipment Available on Scene:	None			
	Medical Emergency Channel:	Command &/or VMED 28			
	ETA for Ambulance to Scene:	All Times Approximate			
	Air:	Minimum 1 hr			
	Ground:	Minimum 20 min			
	Approved Helispot:	H10	H20	H30 (Rimrock Helispot)	
	Lat:	36 20.504	36 20.726	36 21.549	
	Long:	105 03.658	105 03.969	105 04.280	
DIV CHARLIE	EMS Responders & Capability:	No Medical Resources Assigned			
	Equipment Available on Scene:	None			
	Medical Emergency Channel:	Command &/or VMED 28			
	ETA for Ambulance to Scene:	All Times Approximate			
	Air:	Minimum 1 hr			
	Ground:	Minimum 45 min			
	Approved Helispot:	H30 (Rimrock Helispot)			
	Lat:	36 21.549			
	Long:	105 04.280			
DIV KILO	EMS Responders & Capability:	No Medical Resources Assigned			
	Equipment Available on Scene:	None			
	Medical Emergency Channel:	Command &/or VMED 28			
	ETA for Ambulance to Scene:	All Times Approximate			
	Air:	Minimum 1 hr			
	Ground:	Minimum 1 hr			
	Approved Helispot:	H33	H24	H26	H28 H37
	Lat:	36 22.688	36 25.483	36 24.824	36 25.499 36 23.836
	Long:	105 03.985	105 08.839	105 07.016	105 06.204 105 03.607
DIV MIKE	EMS Responders & Capability:	AMBO 1 (Apodaca EMPF/Goettee EMTF); Santa Fe REMS (Anstine EMPF, Lopez EMPF, Miller AEMF, Hayman AEMF)			
	Equipment Available on Scene:	ALS Ambo; ALS & BLS Kits, Technical Equipment & UTVs			
	Medical Emergency Channel:	Command &/or VMED 28			
	ETA for Ambulance to Scene:	All Times Approximate			
	Air:	Minimum 1 hr			
	Ground:	Minimum 1 hr			
	Approved Helispot:	H76	H38		
	Lat:	36 26.901	36 25.529		
	Long:	104 57.590	105 02.552		
DIV OSCAR	EMS Responders & Capability:	Medic Team 5 (Krause EMPF/Gonzales EMTF)			
	Equipment Available on Scene:	ALS & BLS Kits, UTV			
	Medical Emergency Channel:	Command &/or VMED 28			
	ETA for Ambulance to Scene:	All Times Approximate			
	Air:	Minimum 1 hr			
	Ground:	Minimum 1 hr			
	Approved Helispot:	H55	H60	H70	H78
	Lat:	36 21.679	36 22.124	36 22.532	36 22.623
	Long:	105 01.075	105 01.430	104 59.821	104 57.249

MEDICAL PLAN (ICS 206 WF)

Controlled Unclassified Information//Basic

DIV PAPA	EMS Responders & Capability: No Medical Resources Assigned		
	Equipment Available on Scene: None		
	Medical Emergency Channel: Command &/or VMED 28		
	ETA for Ambulance to Scene: All Times Approximate		
	Air: Minimum 1 hr		
	Ground: Minimum 20 min		
	Approved Helispot: H45 H50		
	Lat: 36 21.180 36 21.527		
	Long: 105 02.226 105 02.160		
IA GROUP	EMS Responders & Capability: No Medical Resources Assigned/911		
	Equipment Available on Scene: None		
	Medical Emergency Channel: Command &/or VMED 28		
	ETA for Ambulance to Scene: All Times Approximate		
	Air: UNK		
	Ground: UNK		
	Approved Helispot: None		
	Lat:		
	Long:		
8. Name & Location			
Remote Camp Location(s)			
BASE CAMP 1115 Highway 21, Cimarron NM 87714	Point of Contact: Jesse Hernandez MEDL (520)-560-2742		
	EMS Responders & Capability: Ambo 3 (Bond EMPF/ Gronewald EMTF)		
	Equipment Available on Scene: ALS Ambo, 500 person kit		
	Medical Emergency Channel: Command &/or VMED 28		
	ETA for Ambulance to Scene: All Times Approximate		
	Air: Minimum 1 hr		
	Ground: Minimum 30 min day/ Minimum 10 min night		
	Approved Helispot: H79		
	Lat: 36 21.922		
	Long: 104 55.717		
MORRIS CREEK ICP 132 North Collison, Cimarron NM 87714	Point of Contact: Alan Schuster MEDL (928-533-6231) Jeff Hatch MEDL (435)-414-3521		
	EMS Responders & Capability: Raton Dispatch 575-445-2704 or 505-272-3115 or 911		
	Equipment Available on Scene: 100 man Kit		
	Medical Emergency Channel: Command &/or VMED 28		
	ETA for Ambulance to Scene: All Times Approximate		
	Air: Minimum 30min Dependent on availability		
	Ground: Minimum 10min Dependent on availability		
	Approved Helispot: Wayne Baker Heliport		
	Lat: N 36 30.761		
	Long: W 104 55.484		
9. Prepared By (Medical Unit Leader)			
10. Date/Time			
11. Reviewed by Safety Officer & Medical Command Officer			
12. Date/Time			
Alan Schuster (928)-533-6231 Jeff Hatch (435)-414-3521 	07/11/2018 @2100	Bill Korrumph  Troy Lutrick 	07/11/2018 @2100

MEDICAL PLAN (ICS 206 WF)

Controlled Unclassified Information//Basic

Medical Incident Report

FOR A NON-EMERGENCY INCIDENT, WORK THROUGH CHAIN OF COMMAND TO REPORT AND TRANSPORT INJURED PERSONNEL AS NECESSARY.

FOR A MEDICAL EMERGENCY: IDENTIFY ON SCENE INCIDENT COMMANDER BY NAME AND POSITION AND ANNOUNCE "MEDICAL EMERGENCY" TO INITIATE RESPONSE FROM IMT COMMUNICATIONS/DISPATCH.

Use the following items to communicate situation to communications/dispatch.

1. CONTACT COMMUNICATIONS / DISPATCH (Verify correct frequency prior to starting report)

Ex: "Communications, Div. Alpha. Stand-by for Emergency Traffic."

2. INCIDENT STATUS: Provide incident summary (including number of patients) and command structure.

Ex: "Communications, I have a Red priority patient, unconscious, struck by a falling tree. Requesting air ambulance to Forest Road 1 at (Lat./Long.) This will be the Trout Meadow Medical, IC is TFLD Jones. EMT Smith is providing medical care."

Severity of Emergency / Transport Priority	<input type="checkbox"/> RED / PRIORITY 1 Life or limb threatening injury or illness. Evacuation need is IMMEDIATE <i>Ex: Unconscious, difficulty breathing, bleeding severely, 2° - 3° burns more than 4 palm sizes, heat stroke, disoriented.</i> <input type="checkbox"/> YELLOW / PRIORITY 2 Serious Injury or illness. Evacuation may be DELAYED if necessary. <i>Ex: Significant trauma, unable to walk, 2° - 3° burns not more than 1-3 palm sizes.</i> <input type="checkbox"/> GREEN / PRIORITY 3 Minor Injury or illness. Non-Emergency transport <i>Ex: Sprains, strains, minor heat-related illness.</i>	
Nature of Injury or Illness & Mechanism of Injury		<i>Brief Summary of Injury or Illness (Ex: Unconscious, Struck by Falling Tree)</i>
Transport Request		<i>Air Ambulance / Short Haul/Hoist Ground Ambulance / Other</i>
Patient Location		<i>Descriptive Location & Lat. / Long. (WGS84)</i>
Incident Name		<i>Geographic Name + "Medical" (Ex: Trout Meadow Medical)</i>
On-Scene Incident Commander		<i>Name of on-scene IC of Incident within an Incident (Ex: TFLD Jones)</i>
Patient Care		<i>Name of Care Provider (Ex: EMT Smith)</i>

3. INITIAL PATIENT ASSESSMENT: Complete this section for each patient as applicable (start with the most severe patient)

Patient Assessment: See IRPG page 106

Treatment:

4. TRANSPORT PLAN:

Evacuation Location (if different): (Descriptive Location (drop point, intersection, etc.) or Lat. / Long.) Patient's ETA to Evacuation Location:

Helispot / Extraction Site Size and Hazards:

5. ADDITIONAL RESOURCES / EQUIPMENT NEEDS:

Example: Paramedic/EMT, Crews, Immobilization Devices, AED, Oxygen, Trauma Bag, IV/Fluid(s), Splints, Rope rescue, Wheeled litter, HAZMAT, Extrication

6. COMMUNICATIONS: Identify State Air/Ground EMS Frequencies and Hospital Contacts as applicable

Function	Channel Name/Number	Receive (RX)	Tone/NAC *	Transmit (TX)	Tone/NAC *
COMMAND					
AIR-TO-GRND					
TACTICAL					

7. CONTINGENCY: Considerations: If primary options fail, what actions can be implemented in conjunction with primary evacuation method? Be thinking ahead.

8. ADDITIONAL INFORMATION: Updates/Changes, etc.

REMEMBER: Confirm ETA's of resources ordered. Act according to your level of training. Be Alert. Keep Calm. Think Clearly. Act Decisively.