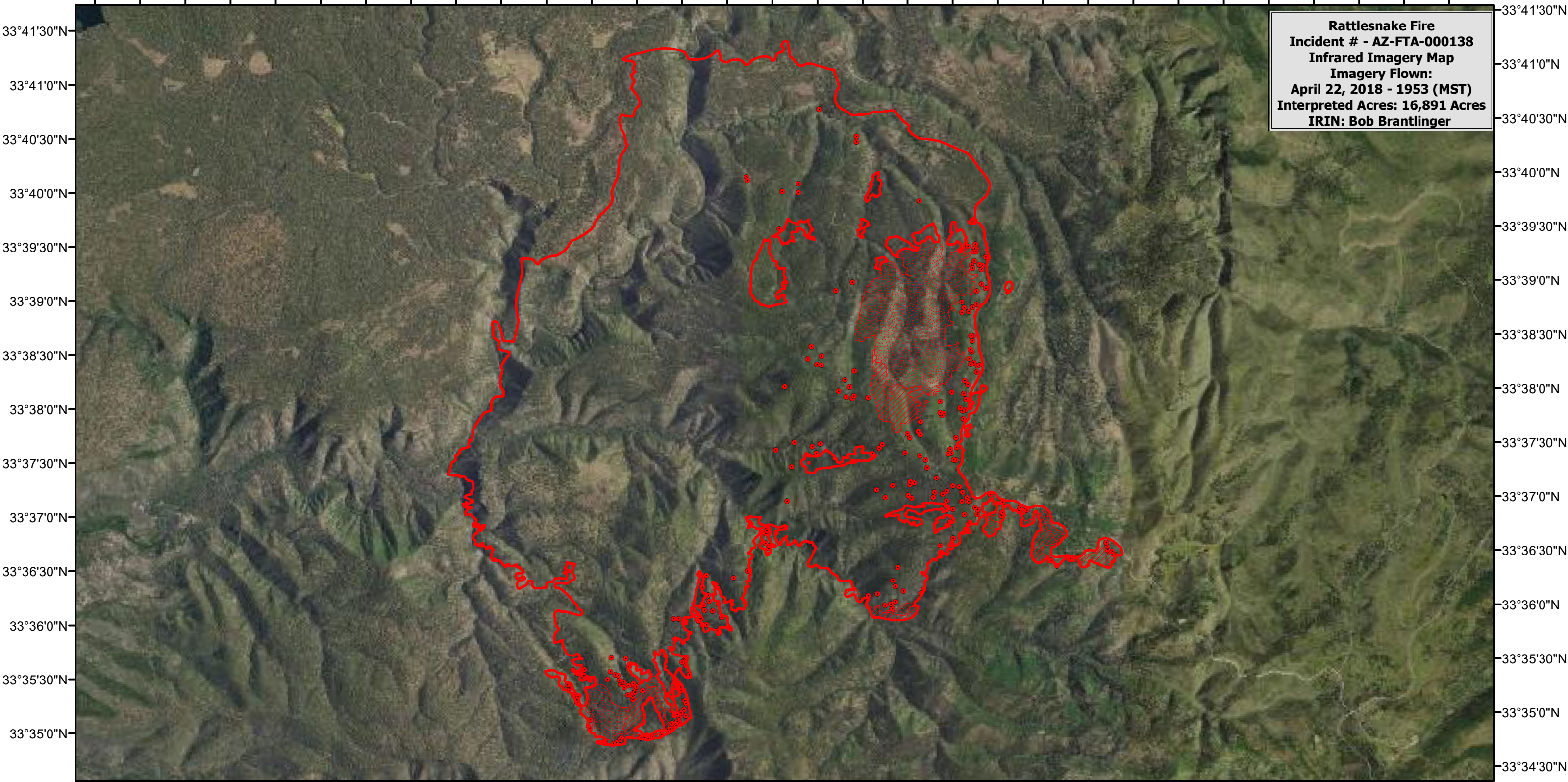


109°35'30"W 109°34'30"W 109°33'30"W 109°32'30"W 109°31'30"W 109°30'30"W 109°29'30"W 109°28'30"W 109°27'30"W 109°26'30"W 109°25'30"W 109°24'30"W 109°23'30"W 109°22'30"W 109°21'30"W 109°20'30"W






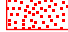
Rattlesnake Fire
Incident # - AZ-FTA-000138
Infrared Imagery Map
Imagery Flown:
April 22, 2018 - 1953 (MST)
Interpreted Acres: 16,891 Acres
IRIN: Bob Brantlinger

33°41'30"N
33°41'0"N
33°40'30"N
33°40'0"N
33°39'30"N
33°39'0"N
33°38'30"N
33°38'0"N
33°37'30"N
33°37'0"N
33°36'30"N
33°36'0"N
33°35'30"N
33°35'0"N


33°41'30"N
33°41'0"N
33°40'30"N
33°40'0"N
33°39'30"N
33°39'0"N
33°38'30"N
33°38'0"N
33°37'30"N
33°37'0"N
33°36'30"N
33°36'0"N
33°35'30"N
33°35'0"N

109°35'30"W 109°34'30"W 109°33'30"W 109°32'30"W 109°31'30"W 109°30'30"W 109°29'30"W 109°28'30"W 109°27'30"W 109°26'30"W 109°25'30"W 109°24'30"W 109°23'30"W 109°22'30"W 109°21'30"W 109°20'30"W

Legend

 Heat Perimeter	 Isolated Heat Source
 Intense Heat	 Scattered Heat Source

N



0 0.5 1 2 3 4 Miles

