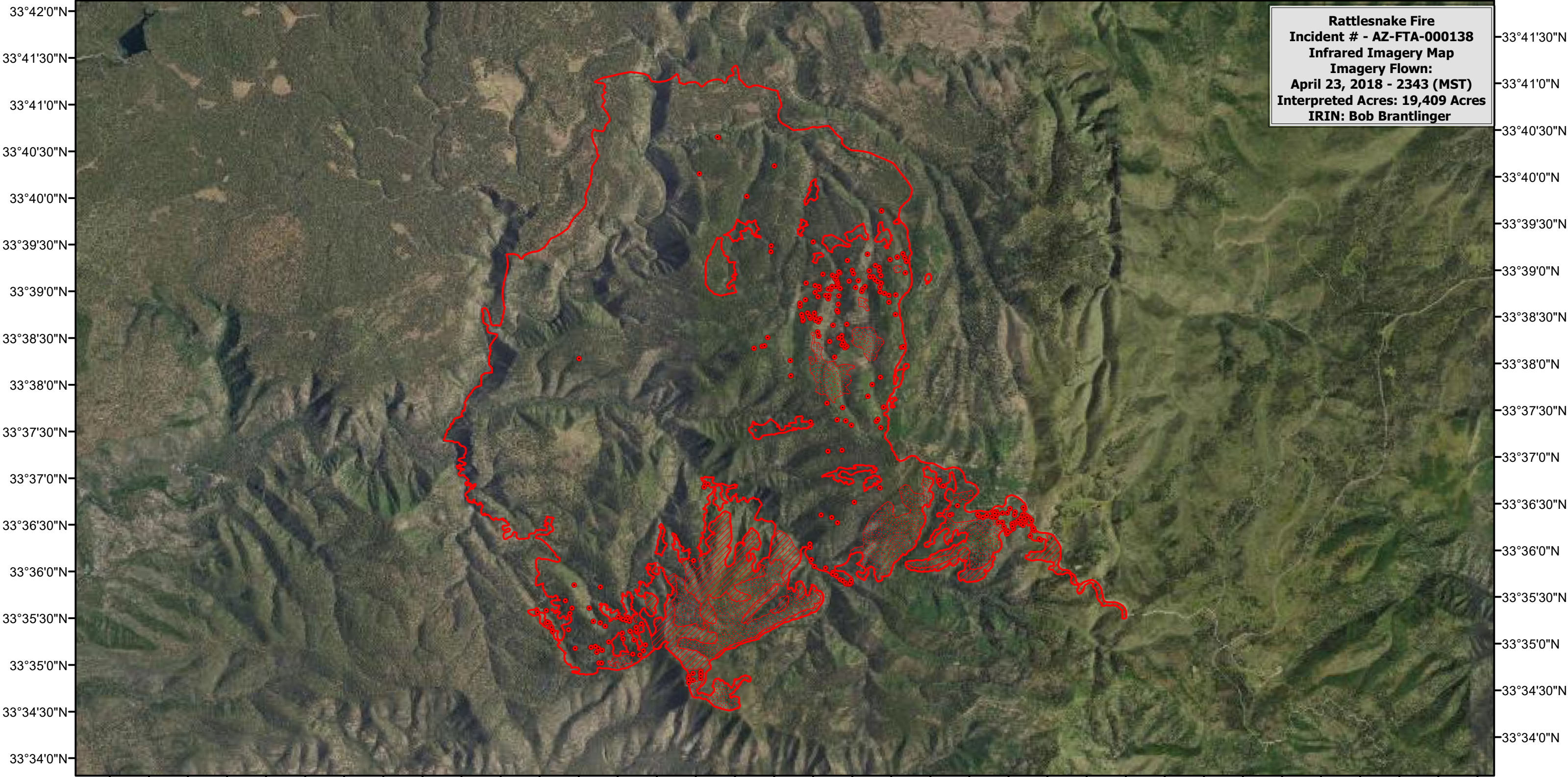





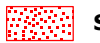
109°36'0"W 109°35'0"W 109°34'0"W 109°33'0"W 109°32'0"W 109°31'0"W 109°30'0"W 109°29'0"W 109°28'0"W 109°27'0"W 109°26'0"W 109°25'0"W 109°24'0"W 109°23'0"W 109°22'0"W 109°21'0"W 109°20'0"W 109°18'30"W




Rattlesnake Fire
Incident # - AZ-FTA-000138
Infrared Imagery Map
Imagery Flown:
April 23, 2018 - 2343 (MST)
Interpreted Acres: 19,409 Acres
IRIN: Bob Brantlinger

109°36'0"W 109°35'0"W 109°34'0"W 109°33'0"W 109°32'0"W 109°31'0"W 109°30'0"W 109°29'0"W 109°28'0"W 109°27'0"W 109°26'0"W 109°25'0"W 109°24'0"W 109°23'0"W 109°22'0"W 109°21'0"W 109°20'0"W 109°18'30"W

Legend

	Heat Perimeter		Isolated Heat Source
	Intense Heat		Scattered Heat Source

N



0 0.5 1 2 3 4 Miles

