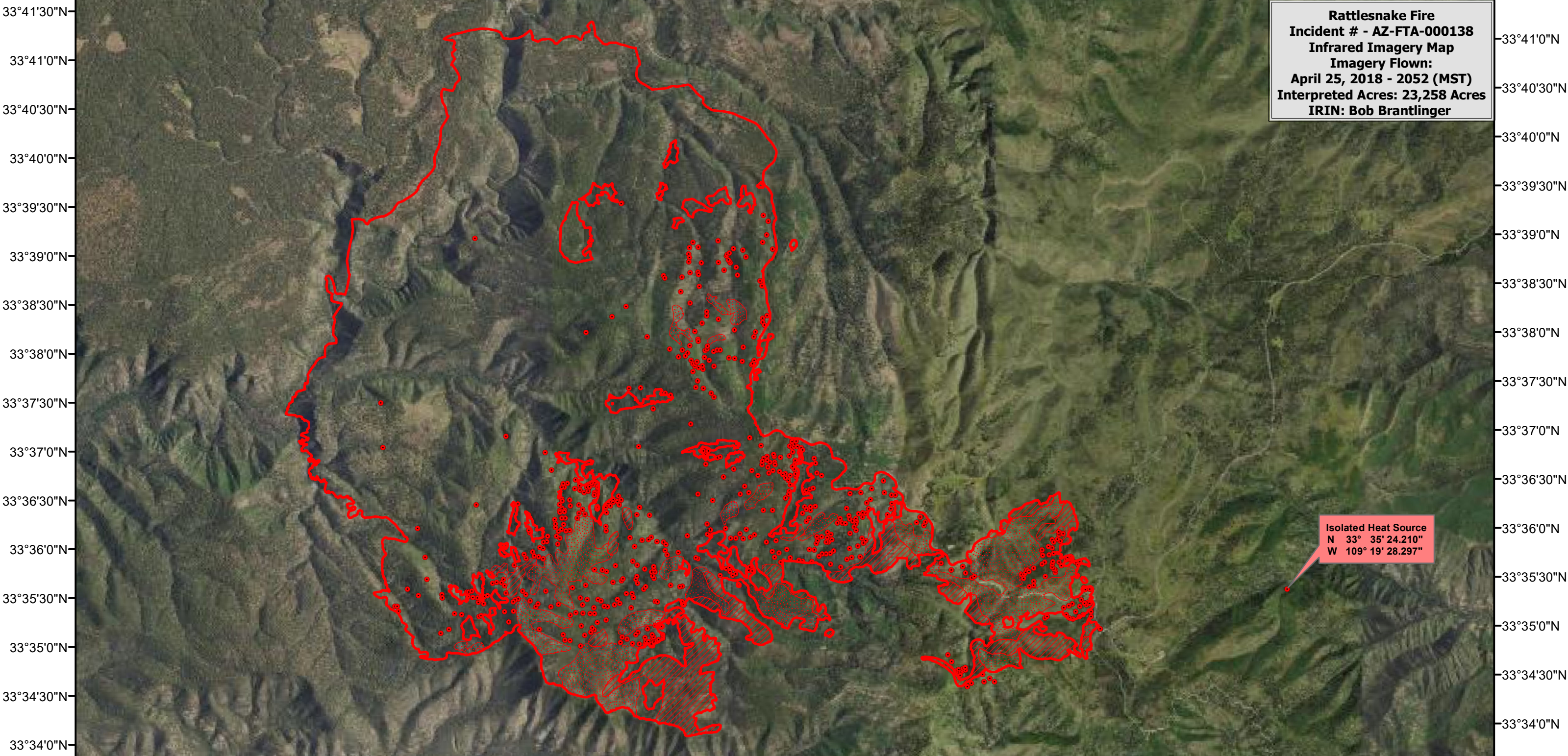


109°34'0"W 109°33'0"W 109°32'0"W 109°31'0"W 109°30'0"W 109°29'0"W 109°28'0"W 109°27'0"W 109°26'0"W 109°25'0"W 109°24'0"W 109°23'0"W 109°22'0"W 109°21'0"W 109°20'0"W 109°19'0"W 109°18'0"W 109°17'0"W




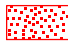


Rattlesnake Fire
Incident # - AZ-FTA-000138
Infrared Imagery Map
Imagery Flown:
April 25, 2018 - 2052 (MST)
Interpreted Acres: 23,258 Acres
IRIN: Bob Brantlinger

Isolated Heat Source
N 33° 35' 24.210"
W 109° 19' 28.297"

109°34'0"W 109°33'0"W 109°32'0"W 109°31'0"W 109°30'0"W 109°29'0"W 109°28'0"W 109°27'0"W 109°26'0"W 109°25'0"W 109°24'0"W 109°23'0"W 109°22'0"W 109°21'0"W 109°20'0"W 109°19'0"W 109°18'0"W 109°17'0"W

Legend

 Heat Perimeter	 Isolated Heat Source
 Intense Heat	 Scattered Heat Source

0 0.5 1 2 3 4 Miles

