

Tinder Incident Index Map

GIS Acres 12,590
5/3/2018 19:40

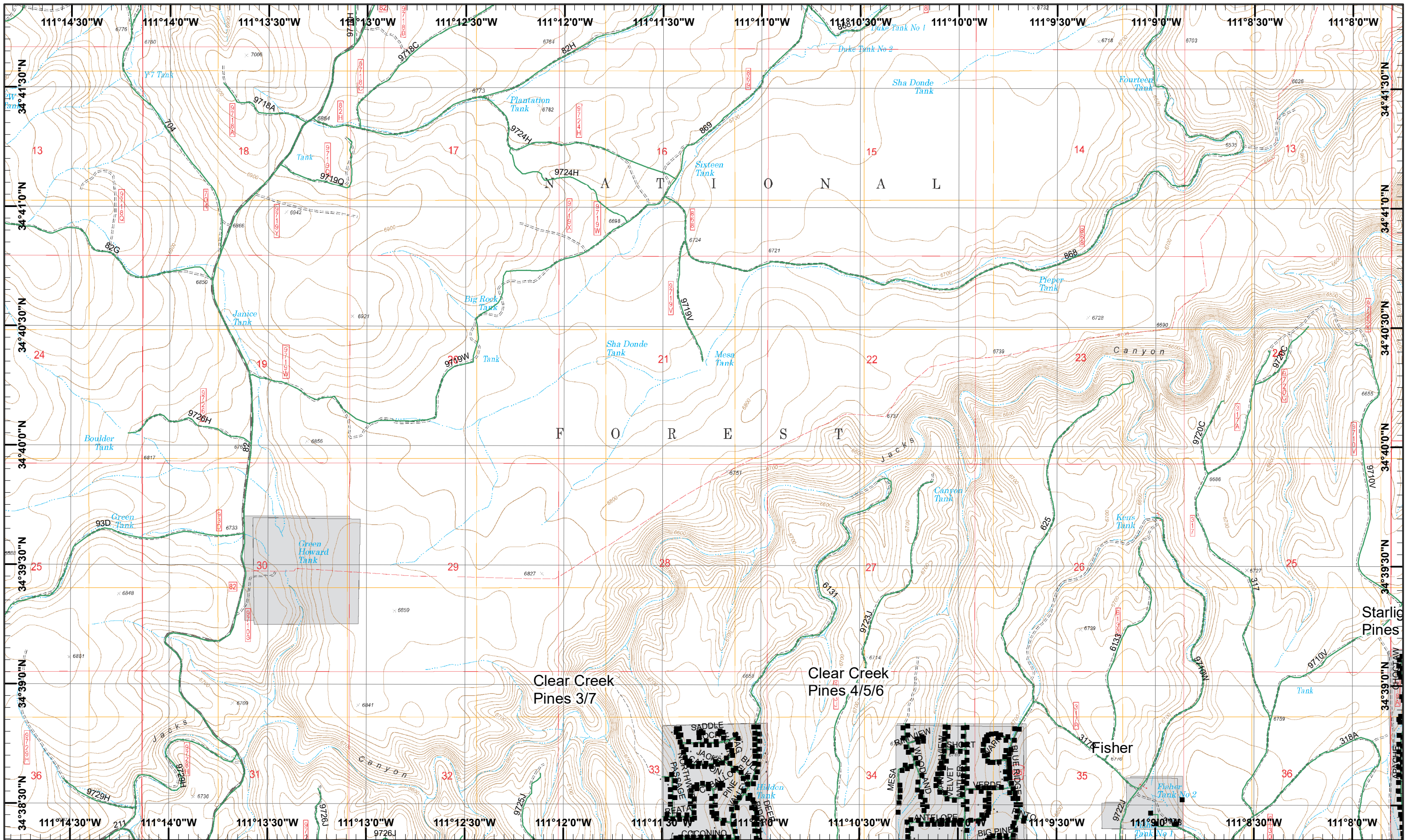
0 0.5 1 Miles

Day Operational Periods 5/4/2018

Map Created 5/3/2018 8:28:42 PM RDC

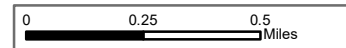
Forest Boundary	Helispot	Mobile Weather Unit	Water Source	Completed Hand Line
Value at Risk	Incident Command Post	Repeater	Completed Line	Uncontrolled Fire Edge
Camp	Lookout	Staging Area	Road as Completed Line	Fire Perimeter
Drop Point			Completed Dozer Line	

) Division
] Branch



Tinder Incident
 Day Operational Periods 5/4/2018

GIS Acres 12,590
 5/3/2018 19:40



Map Created 5/3/2018 8:22:09 PM RDC

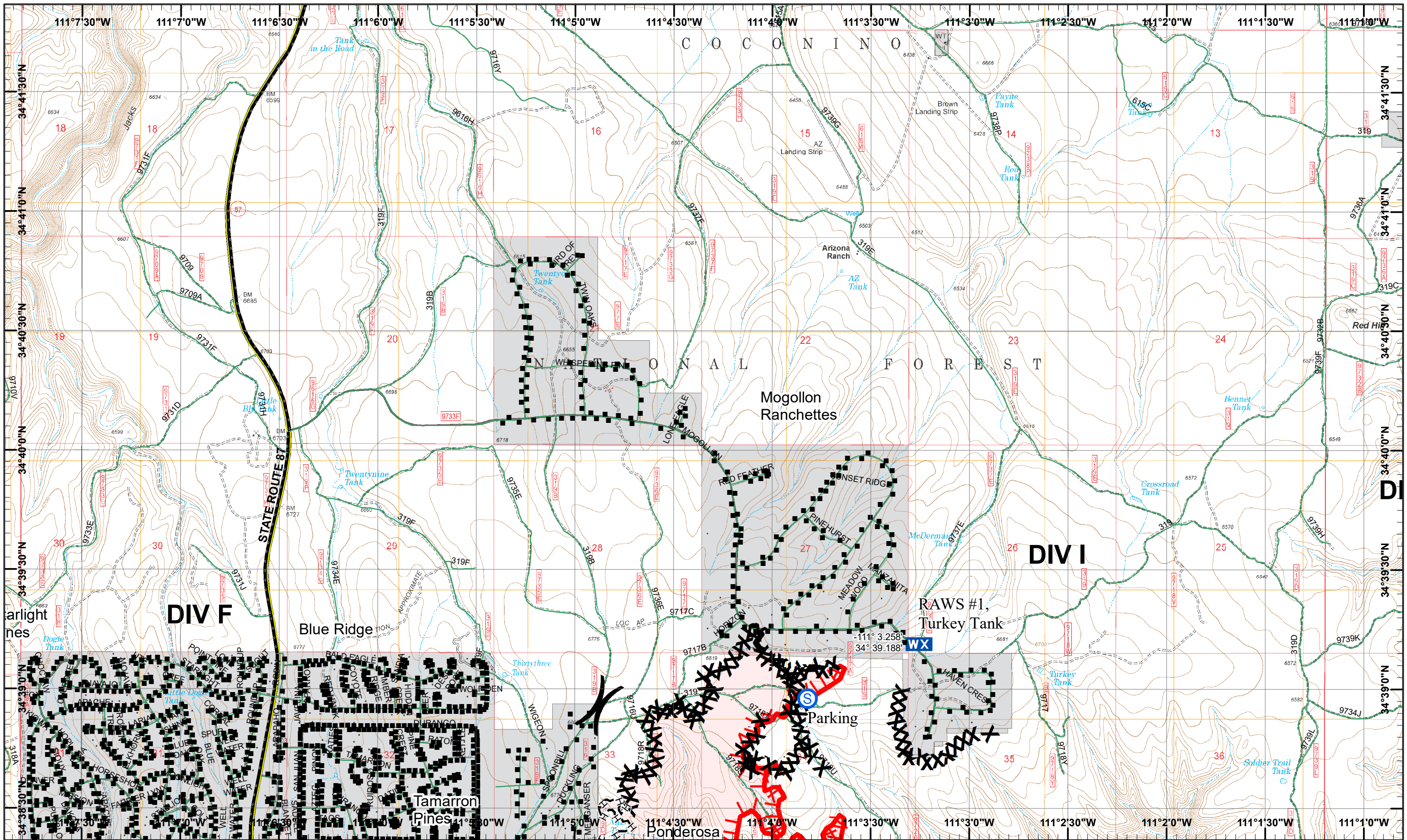


■ Structure Addresses
 ■ Private Ownership

1	2
3	4
5	6
7	8

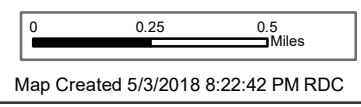
Page 1
)(Division
)(Branch





Tinder Incident
 Day Operational Periods 5/4/2018

GIS Acres 12,590
 5/3/2018 19:40

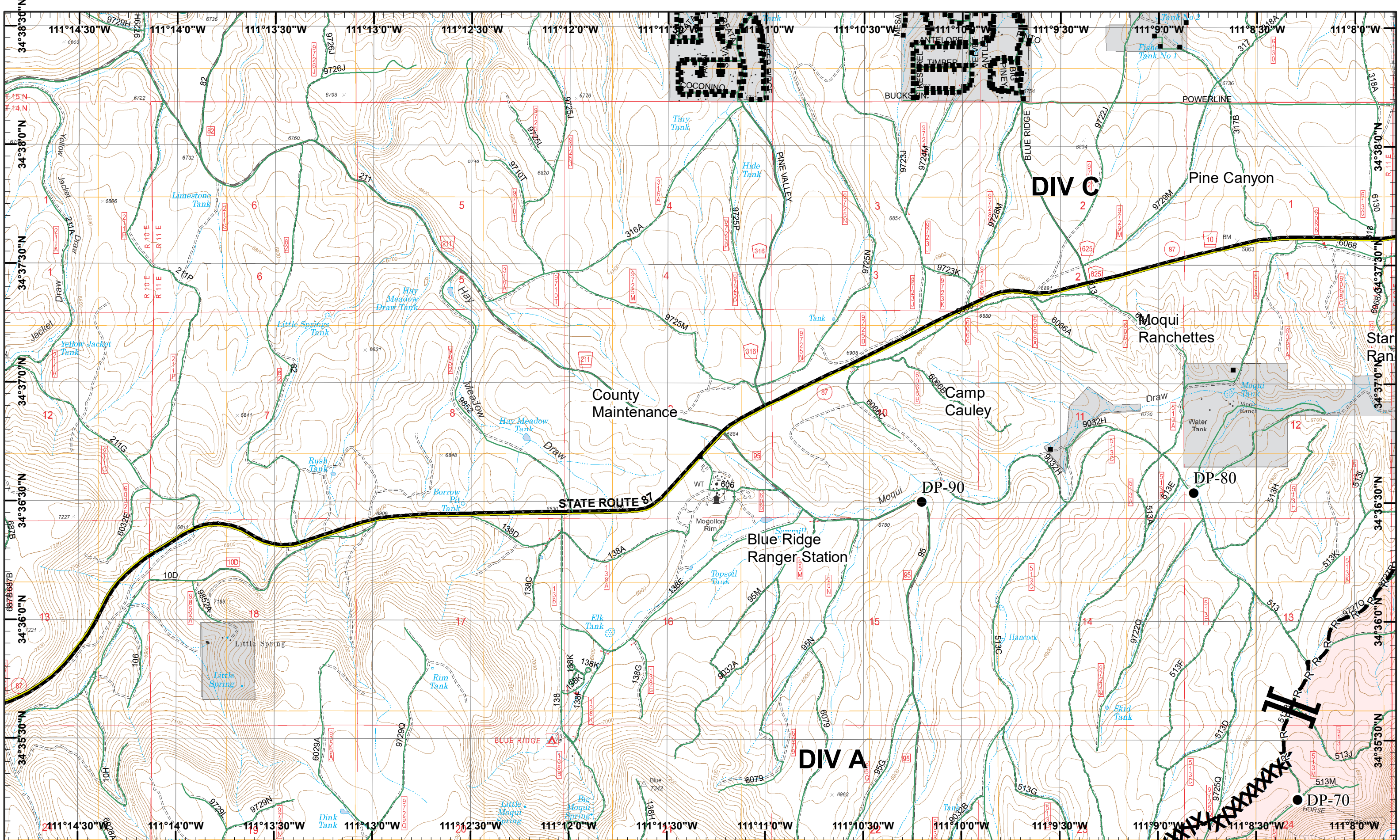


- Structure Addresses
- Staging Area
- Completed Dozer Line
- Uncontrolled Fire Edge
- Private Ownership
- Completed Line H
- Completed Hand Line
- WX Mobile Weather Unit

1	2
3	4
5	6
7	8

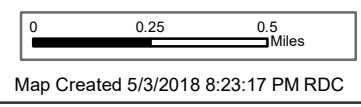
Page 2
 () Division
 [] Branch





Tinder Incident
 Day Operational Periods 5/4/2018

GIS Acres 12,590
 5/3/2018 19:40

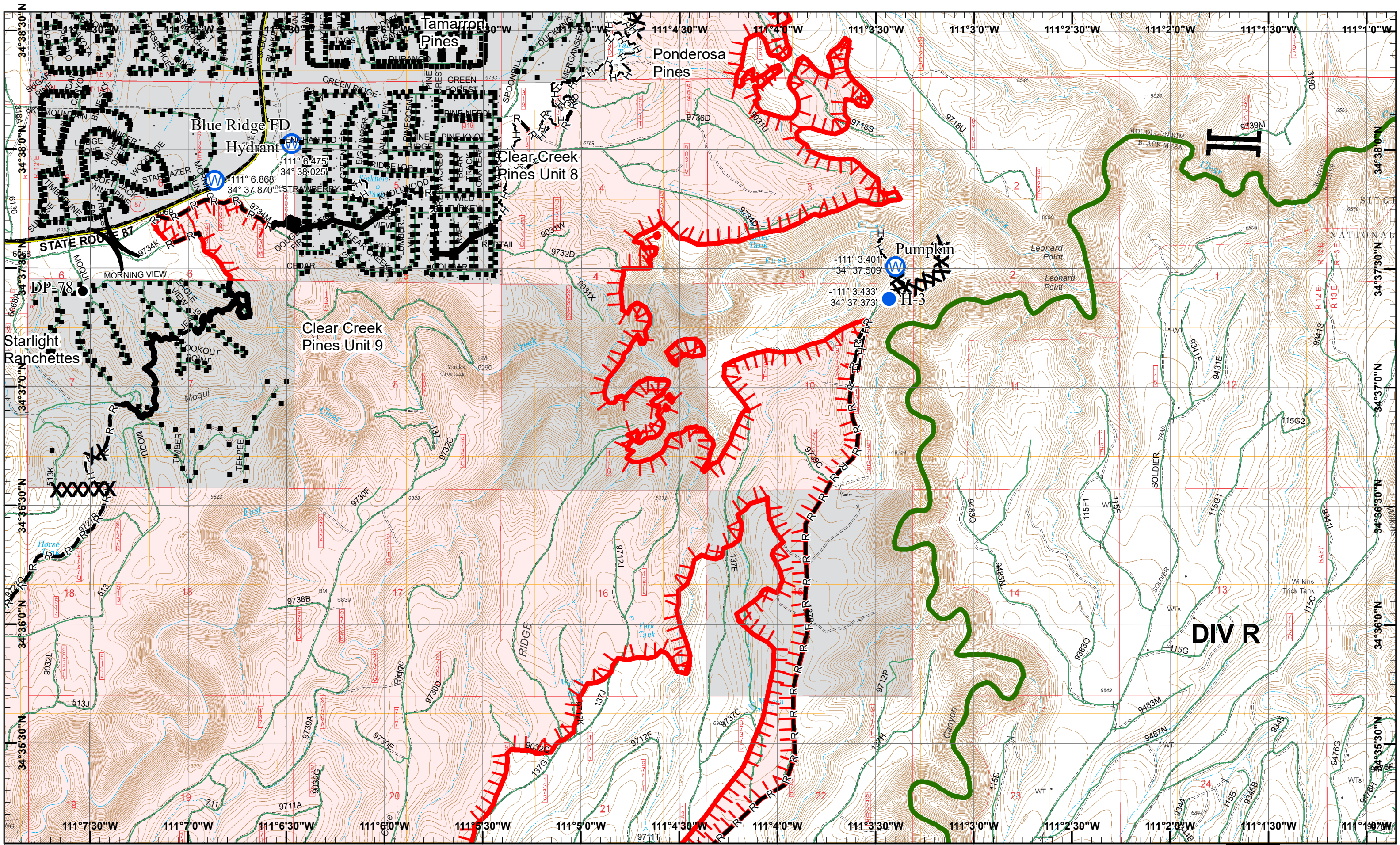


- Structure Addresses
- Drop Point
- XXX Completed Dozer Line
- ▭ Private Ownership
- R-Road as Completed Line

1	2
3	4
5	6
7	8

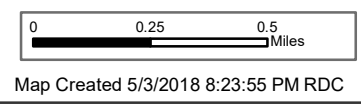
Page 3
)(Division
 || Branch





Tinder Incident
 Day Operational Periods 5/4/2018

GIS Acres 12,590
 5/3/2018 19:40

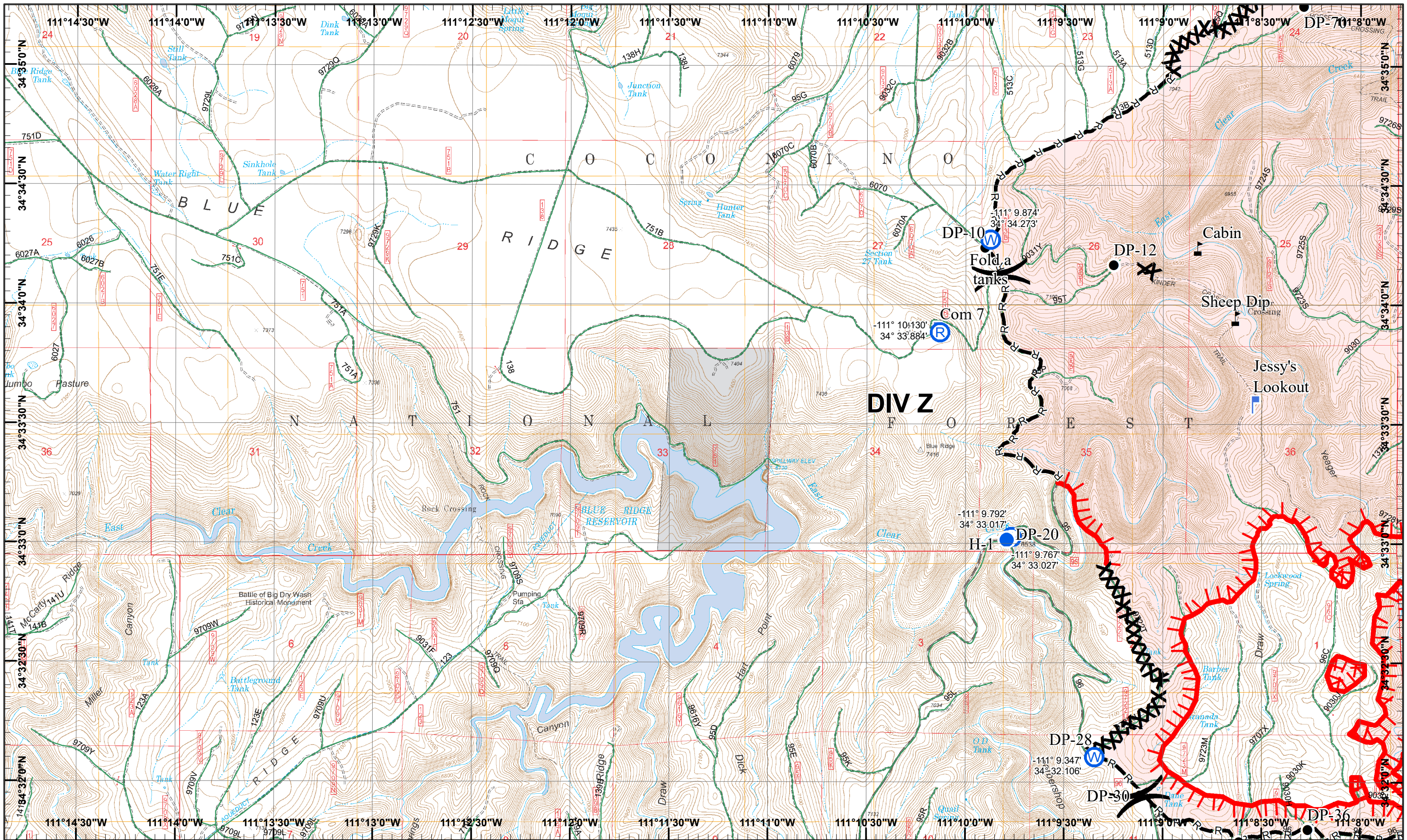


- Structure Addresses
- Drop Point
- Helispot
- W Water Source
- R Road as Completed Line
- H Completed Hand Line
- Completed Line
- XXX Completed Dozer Line
- ▤ Uncontrolled Fire Edge
- ▨ Private Ownership

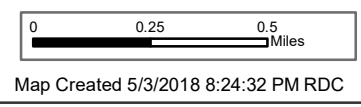
1	2
3	4
5	6
7	8

Page 4
)(Division
][Branch



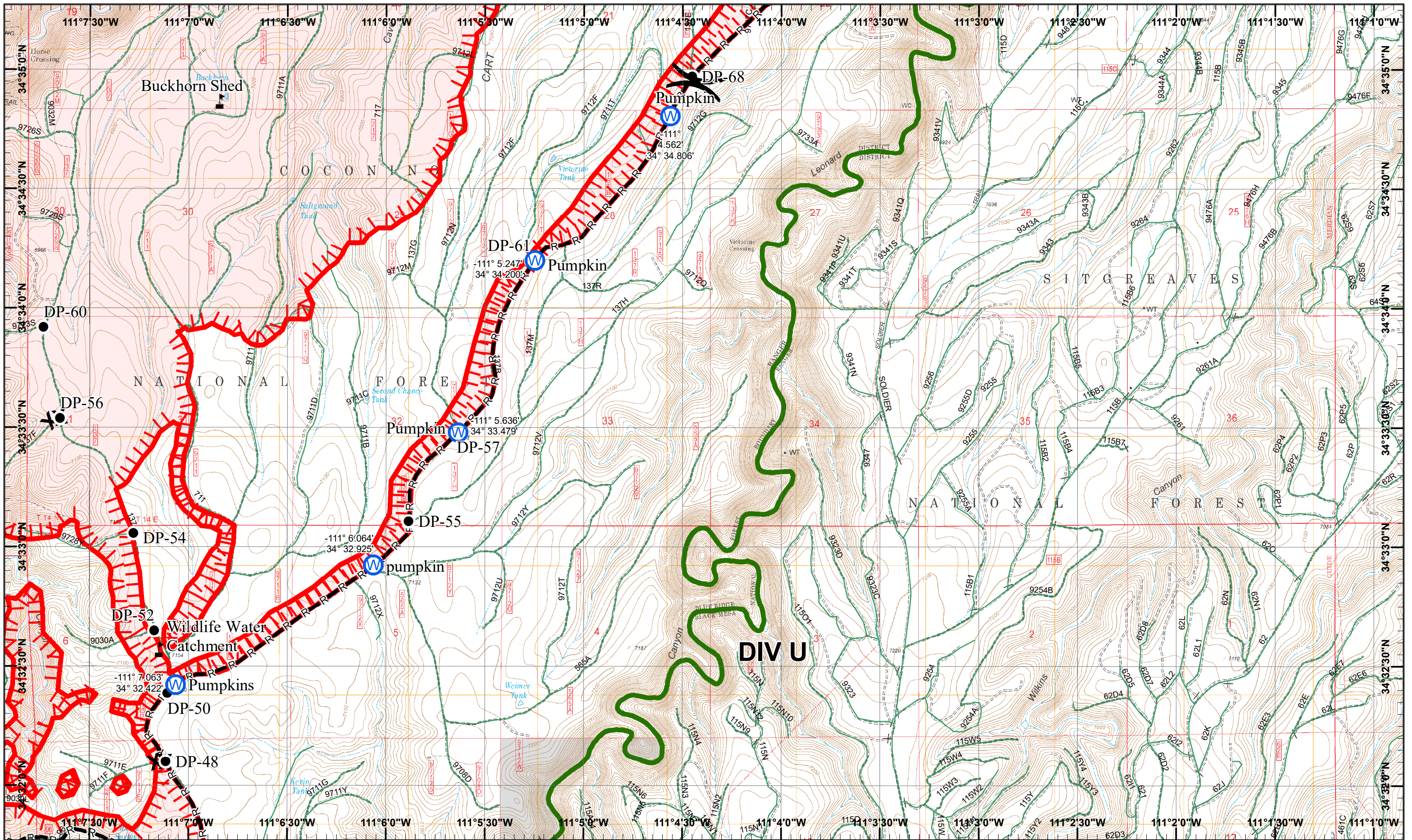


Tinder Incident
 GIS Acres 12,590
 5/3/2018 19:40
 Day Operational Periods 5/4/2018



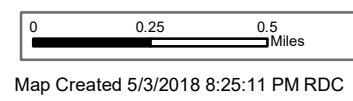
- Value at Risk
- Helispot
- Lookout
- Repeater
- Water Source
- Completed Dozer Line
- Private Ownership
- Drop Point
- Road as Completed Line
- Uncontrolled Fire Edge

1	2
3	4
5	6
7	8



Tinder Incident
 Day Operational Periods 5/4/2018

GIS Acres 12,590
 5/3/2018 19:40

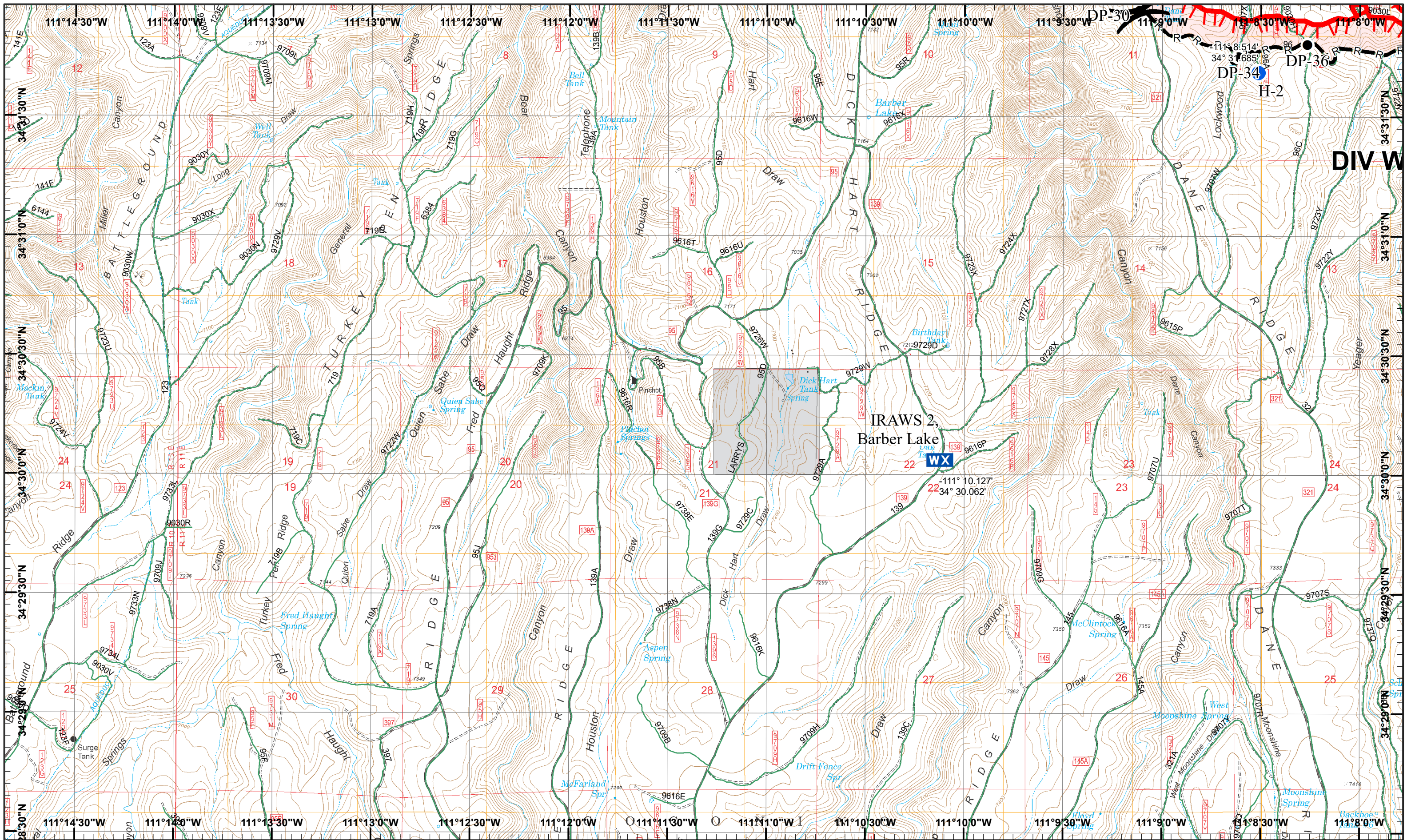


- Drop Point
- Uncontrolled Fire Edge
- Water Source
- Completed Dozer Line
- Private Ownership
- Road as Completed Line

1	2
3	4
5	6
7	8

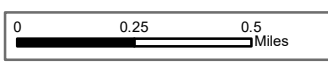
Page 6
)(Division
 [] Branch





Under Incident
 Day Operational Periods 5/4/2018

GIS Acres 12,590
 5/3/2018 19:40
 Map Created 5/3/2018 8:25:41 PM RDC

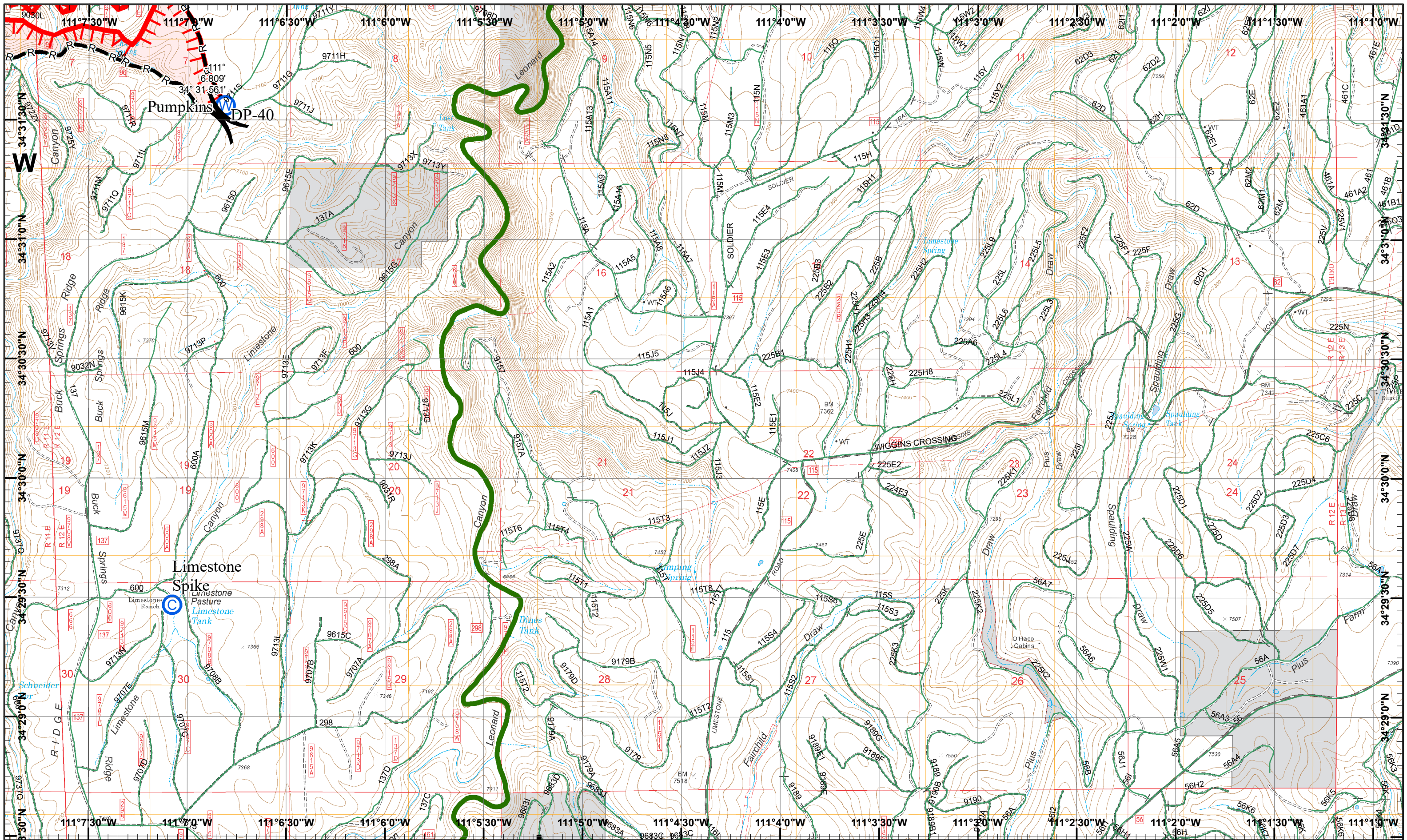


- Drop Point
- Helispot
- Mobile Weather Unit
- Uncontrolled Fire Edge
- Private Ownership
- Road as Completed Line

1	2
3	4
5	6
7	8

Page 7
)(Division
][Branch

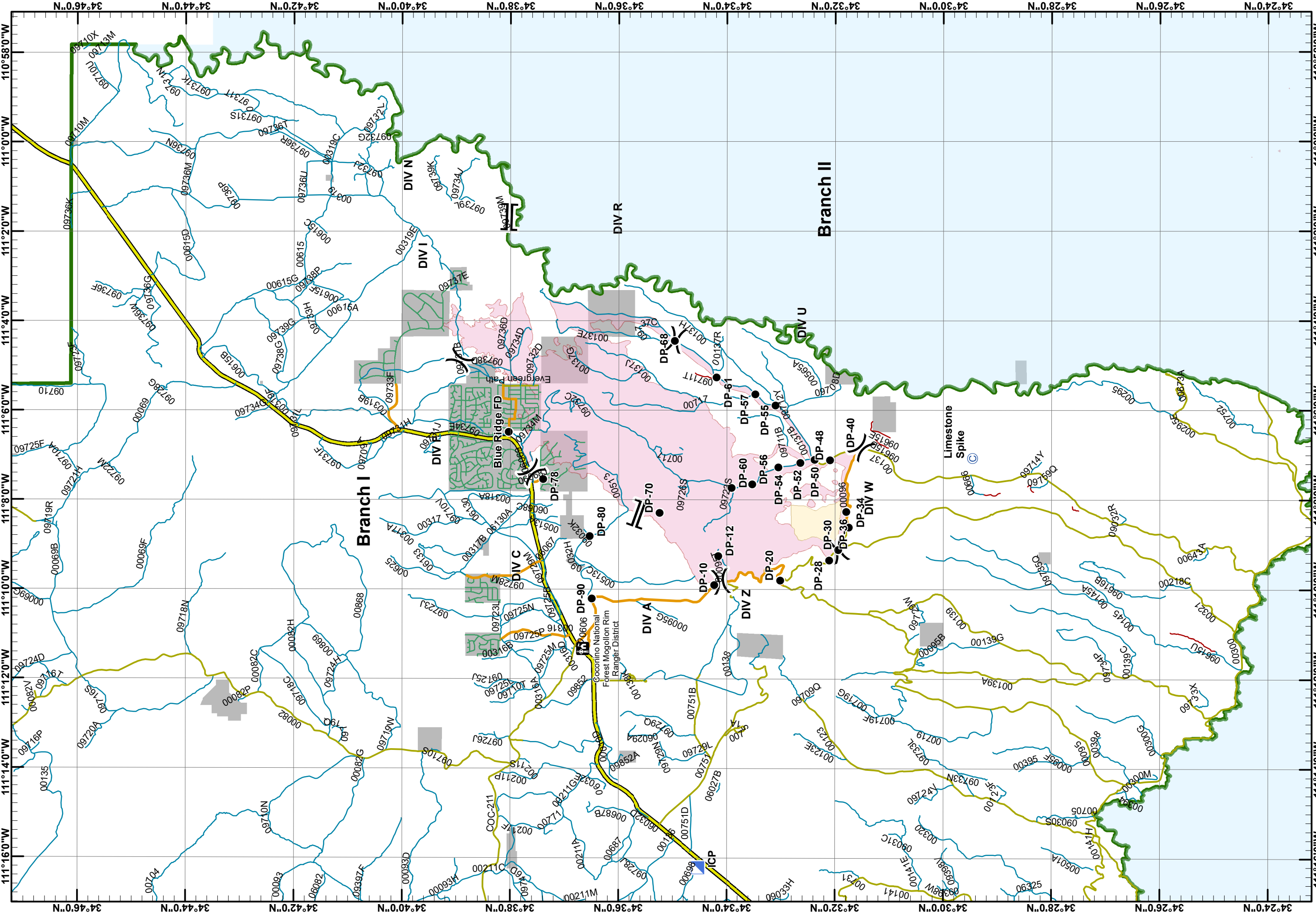




Finder Incident
 Day Operational Periods 5/4/2018

GIS Acres 12,590
 5/3/2018 19:40
 Map Created 5/3/2018 8:26:12 PM RDC

■ Structure Addresses
 ● Drop Point
 — R Road as Completed Line
Ⓢ Camp
 Ⓜ Water Source
 ▬ Uncontrolled Fire Edge
▭ Private Ownership



Tinder Fire

Incident Transportation Map

Day Operational Periods 5/4/2018

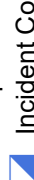
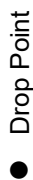
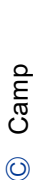
NAD 1983 UTM Zone 12N

Map Created 5/3/2018 8:03:08 PM AJH

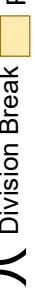
Level of Road Maintenance

- 1 - Closed Roads
- 2 - High Clearance Vehicles
- 3 - Suitable for Passenger Vehicles
- 4 - Moderate Degree of User Comfort
- 5 - High Degree of User Comfort

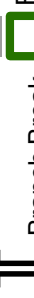
Subdivision Streets



Wildfire Daily Fire Perimeter



Division Break



Private Ownership



Forest Boundary



Branch Break



Incident Command Post



Branch Boundary



Branch Boundary

Level of Road Maintenance

1 - Closed Roads

2 - High Clearance Vehicles

3 - Suitable for Passenger Vehicles

4 - Moderate Degree of User Comfort

5 - High Degree of User Comfort

Subdivision Streets

Camp

Drop Point

Incident Command Post

Wildfire Daily Fire Perimeter

Division Break

Private Ownership

Forest Boundary

Branch Break

Branch Boundary

Branch Boundary

Branch Boundary