

Tinder Incident Index Map

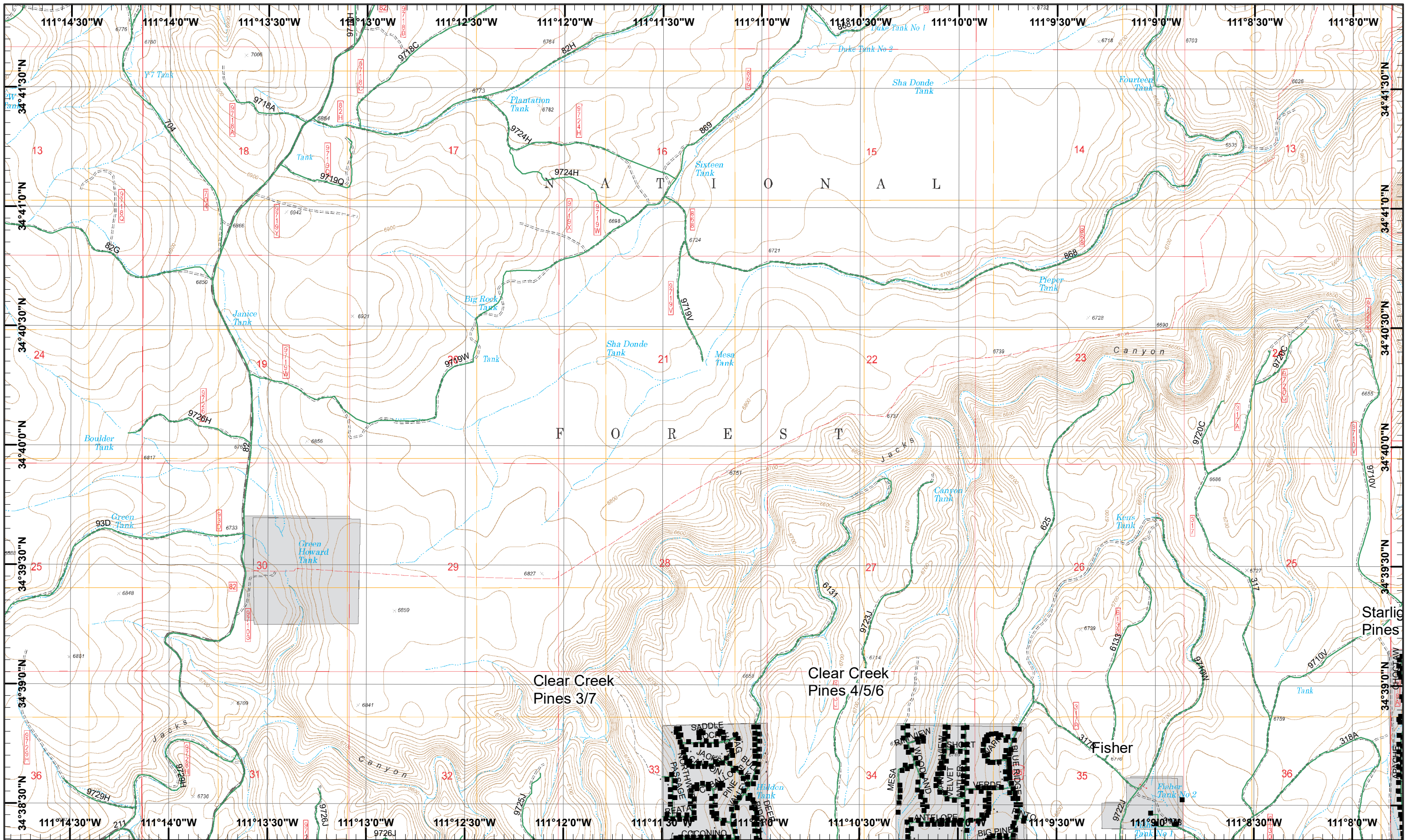
GIS Acres 12,467
5/2/2018 13:00

Day Operational Periods 5/3/2018

Map Created 5/2/2018 8:47:18 PM RDC

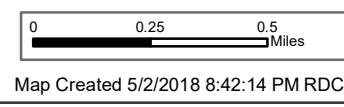
Forest Boundary	Helispot	Mobile Weather Unit	R-Road as Completed Line
Value at Risk	Incident Command Post	Repeater	Completed Dozer Line
Camp	Lookout	Water Source	Completed Hand Line
Drop Point			Uncontrolled Fire Edge
			Fire Perimeter

) Division
] Branch



Tinder Incident
 Day Operational Periods 5/3/2018

GIS Acres 12,467
 5/2/2018 13:00

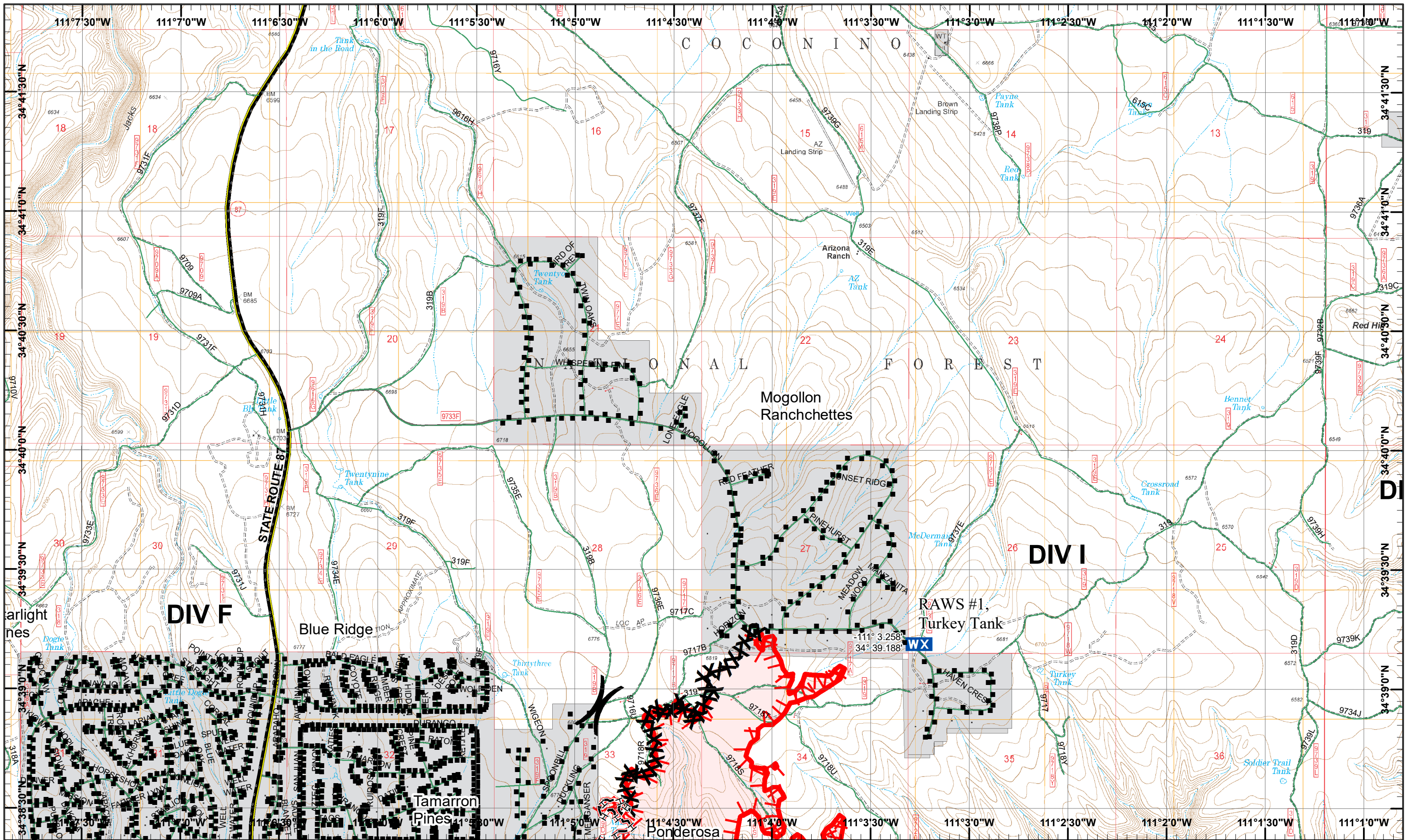


■ Structure Addresses
 ■ Private Ownership

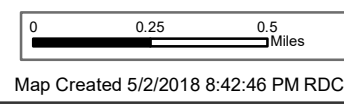
1	2
3	4
5	6
7	8

Page 1
)(Division
][Branch





Tinder Incident
 GIS Acres 12,467
 5/2/2018 13:00
 Day Operational Periods 5/3/2018

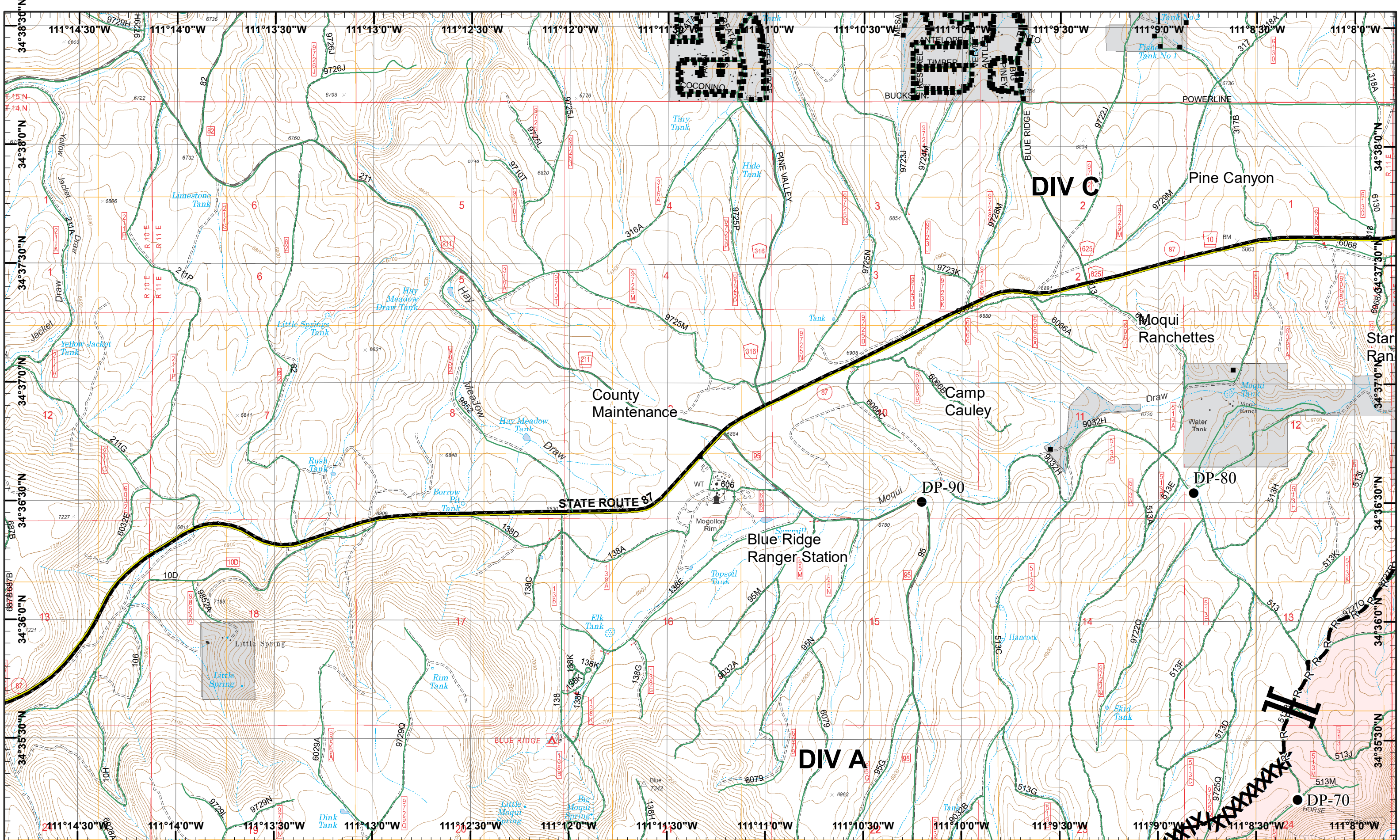


- Structure Addresses
- XXX Completed Dozer Line
- ▭ Uncontrolled Fire Edge
- WX Mobile Weather Unit
- Completed Hand Line
- ▭ Private Ownership

1	2
3	4
5	6
7	8

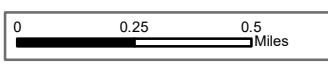
Page 2
)(Division
 [] Branch





Tinder Incident
 Day Operational Periods 5/3/2018

GIS Acres 12,467
 5/2/2018 13:00



Map Created 5/2/2018 8:43:21 PM RDC

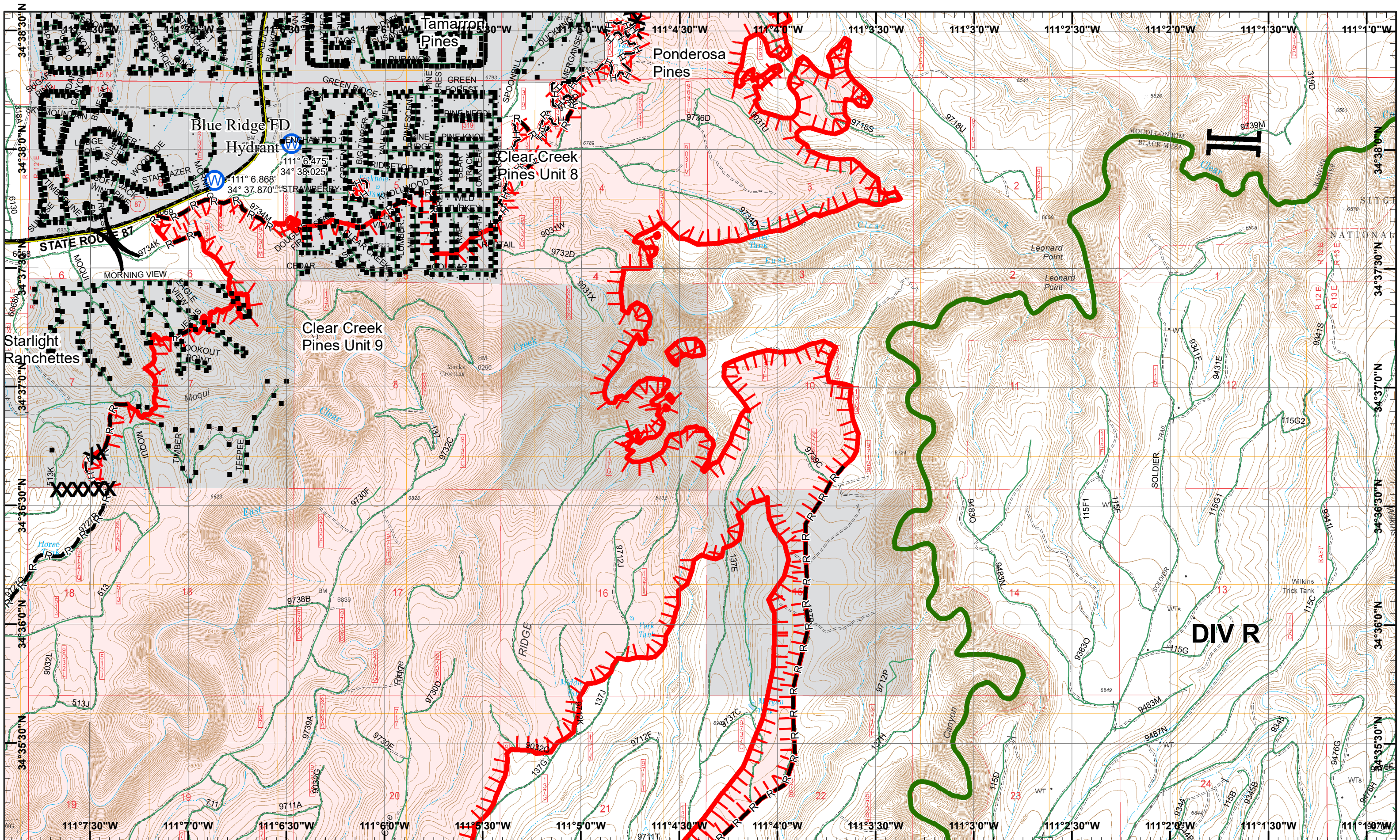


- Structure Addresses
- Drop Point
- XXX Completed Dozer Line
- ▭ Private Ownership
- R-Road as Completed Line

1	2
3	4
5	6
7	8

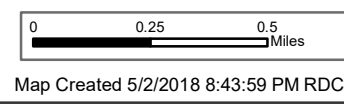
Page 3
)(Division
 || Branch





Tinder Incident
 Day Operational Periods 5/3/2018

GIS Acres 12.467
 5/2/2018 13:00



■ Structure Addresses
 ● Drop Point

W Water Source

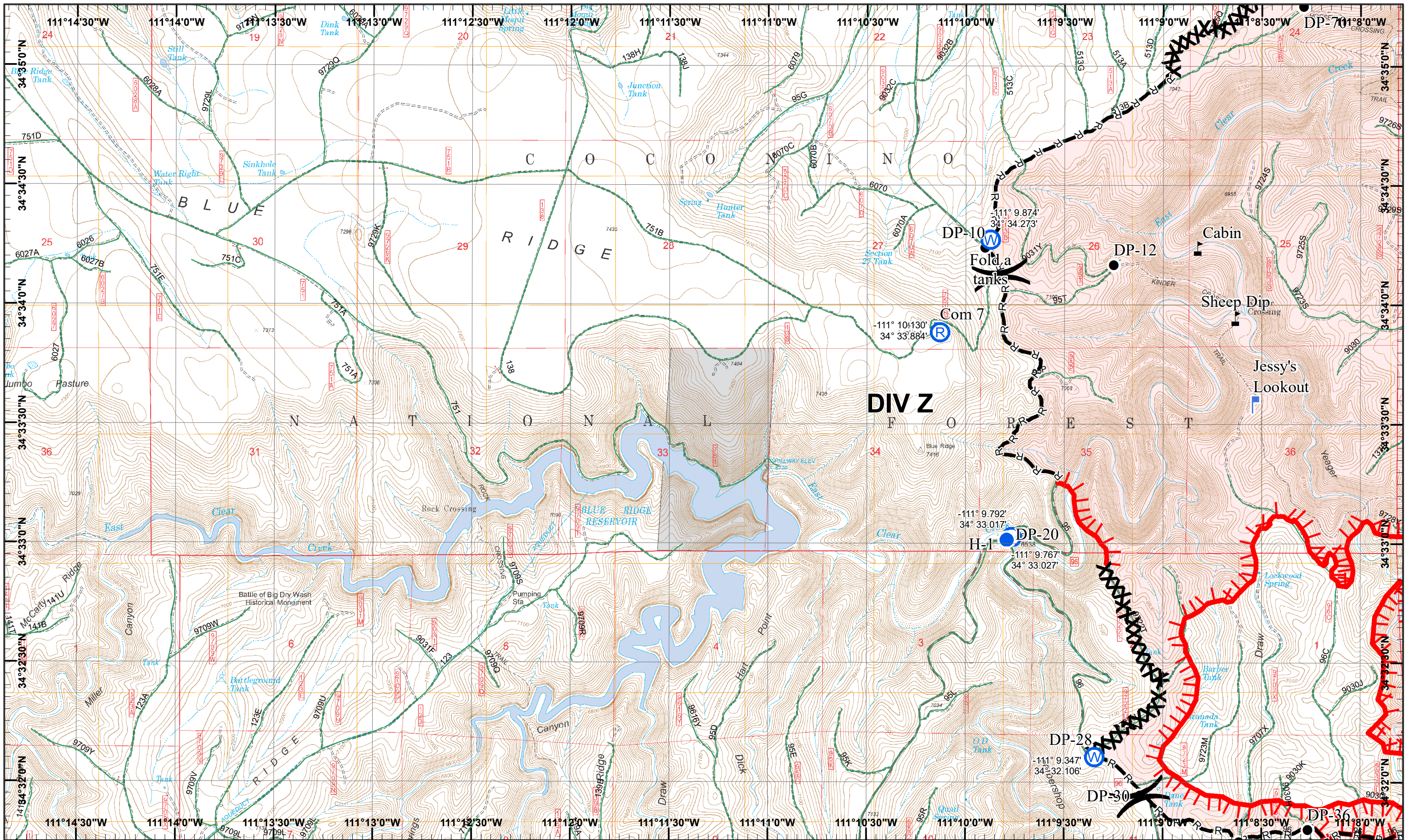
XXX Completed Dozer Line
 R—R Road as Completed Line H—H Completed Hand Line

Uncontrolled Fire Edge
 Private Ownership

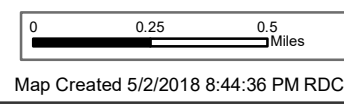
1	2
3	4
5	6
7	8

Page 4
)(Division
 || Branch



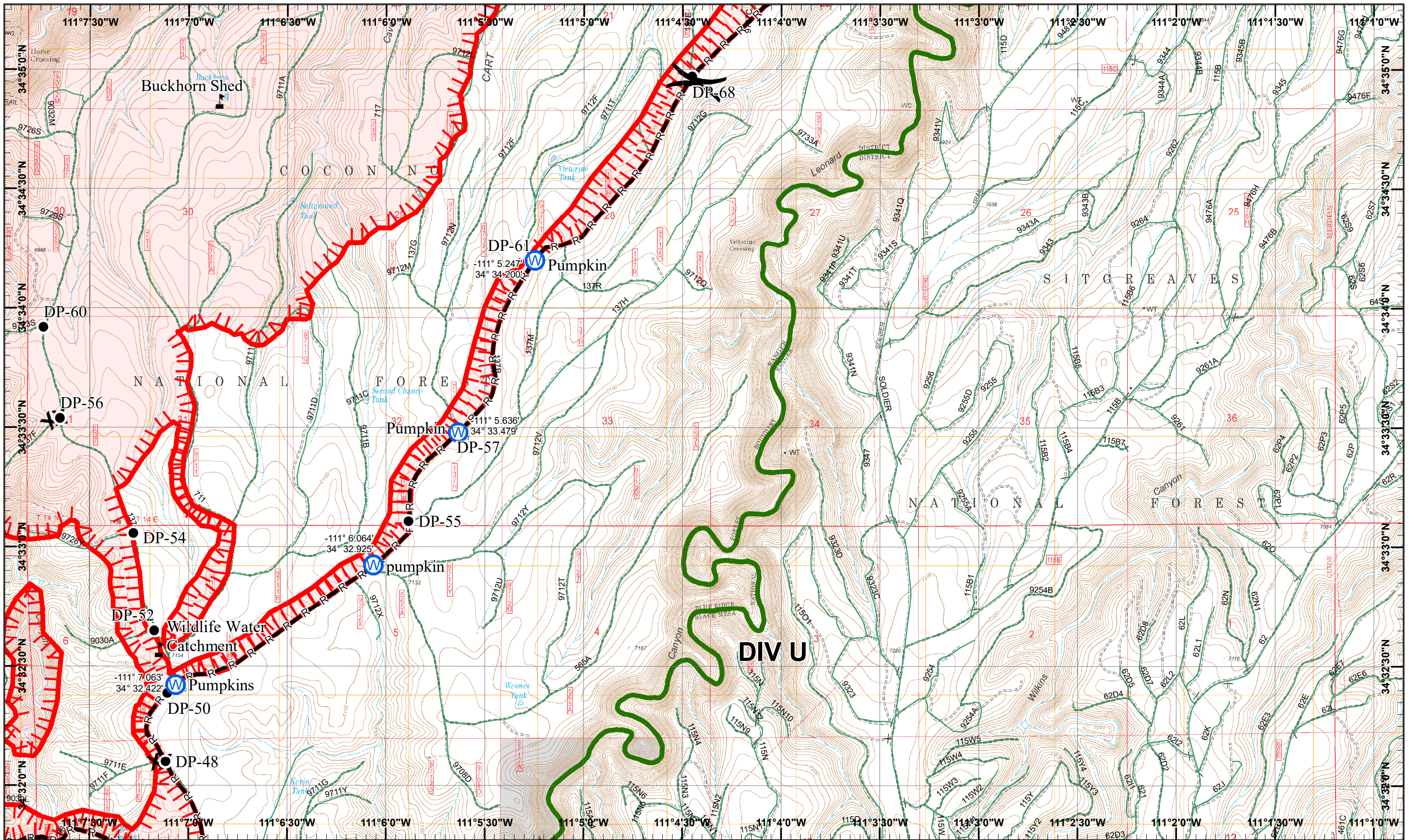


Tinder Incident
 GIS Acres 12,467
 5/2/2018 13:00
 Day Operational Periods 5/3/2018



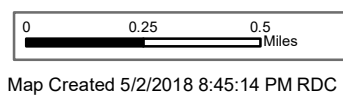
- Value at Risk
- Helispot
- Lookout
- Repeater
- Water Source
- Completed Dozer Line
- Private Ownership
- Drop Point
- Road as Completed Line
- Uncontrolled Fire Edge

1	2
3	4
5	6
7	8



Tinder Incident
 Day Operational Periods 5/3/2018

GIS Acres 12.467
 5/2/2018 13:00

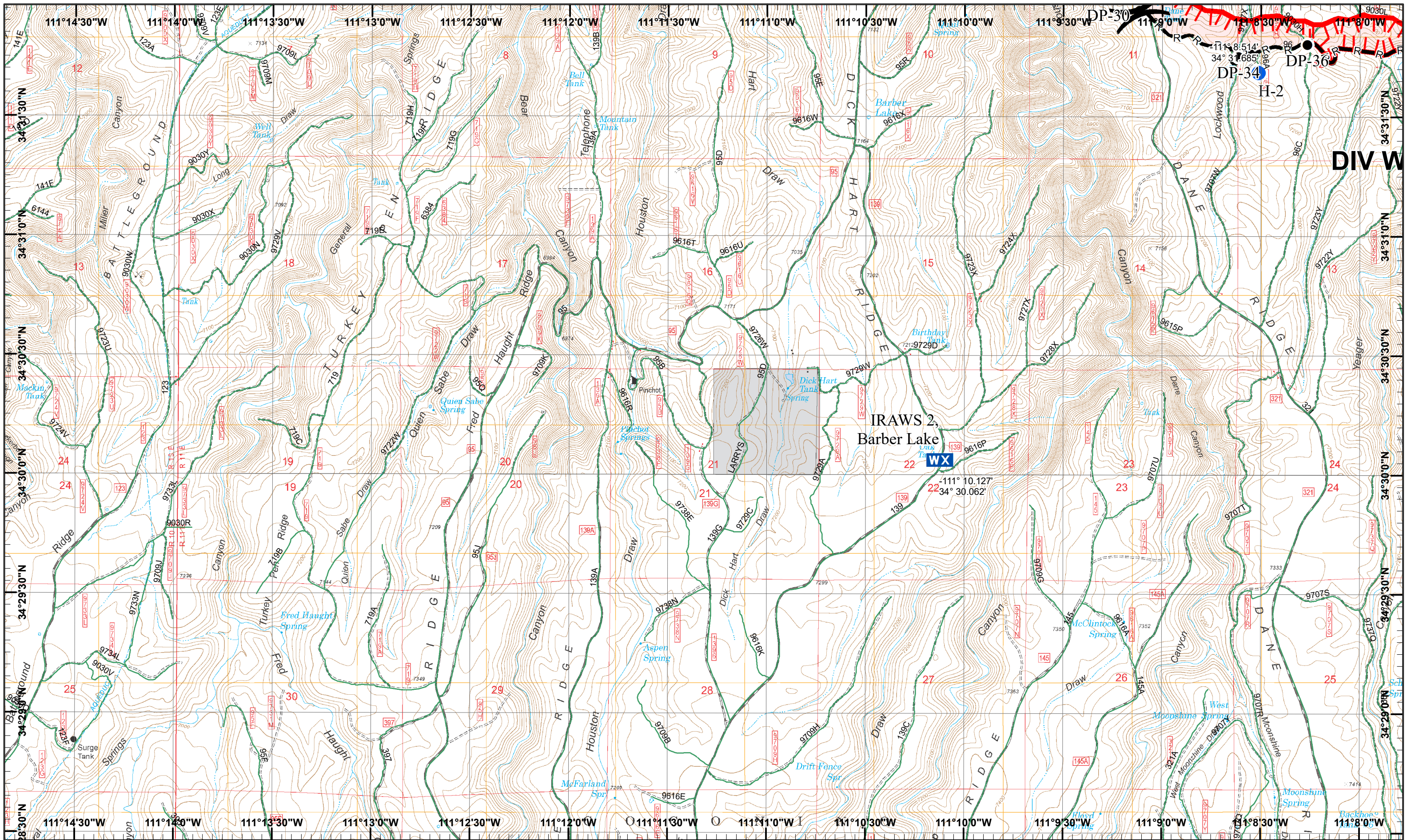


- Value at Risk
- Water Source
- Completed Dozer Line
- Private Ownership
- Drop Point
- Road as Completed Line
- Uncontrolled Fire Edge

1	2
3	4
5	6
7	8

Page 6
)(Division
 || Branch





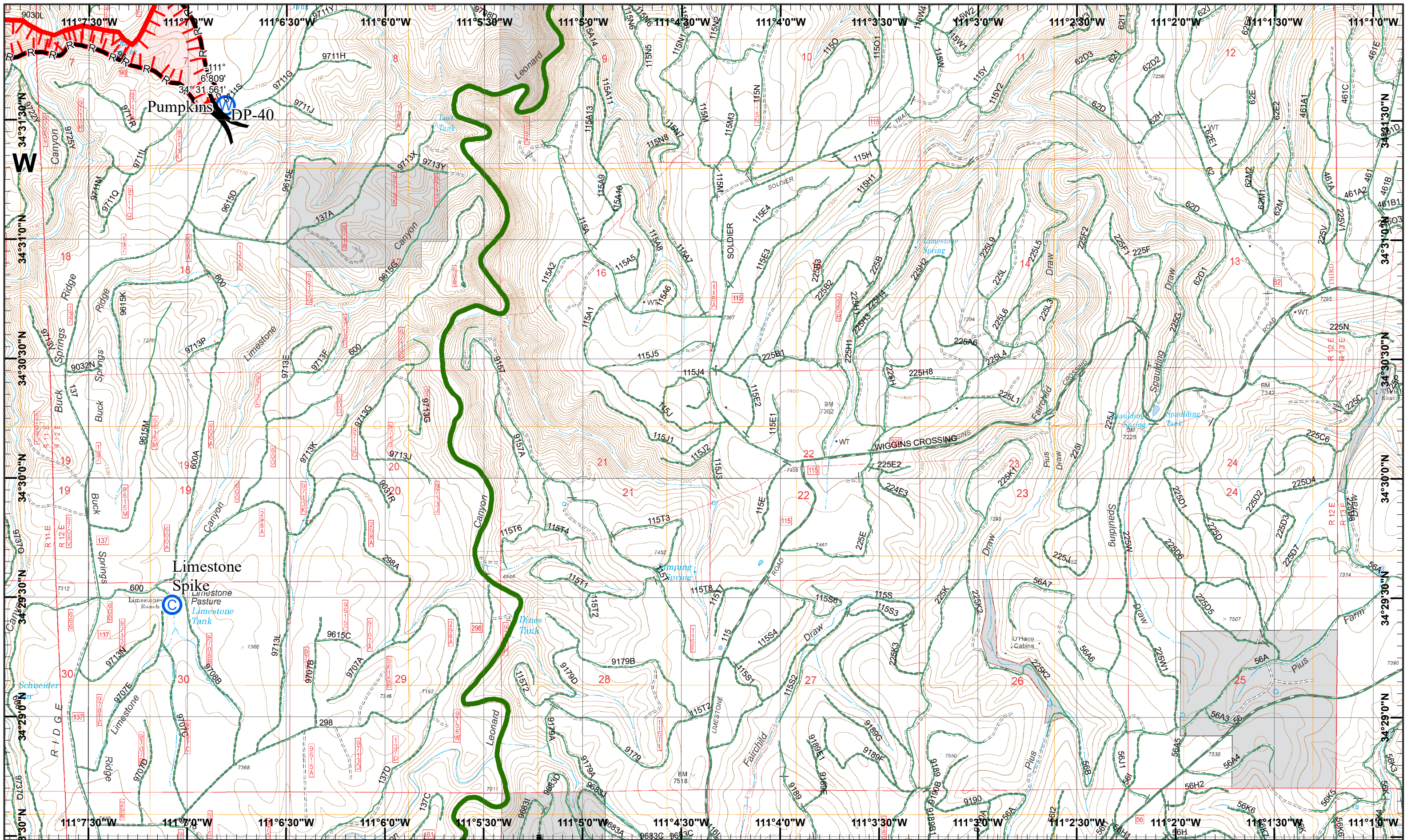
Under Incident
 Day Operational Periods 5/3/2018

GIS Acres 12.467
 5/2/2018 13:00
 0 0.25 0.5 Miles
 Map Created 5/2/2018 8:45:44 PM RDC

- North
- Drop Point
- Mobile Weather Unit
- Uncontrolled Fire Edge
- Helispot
- Private Ownership
- R Road as Completed Line

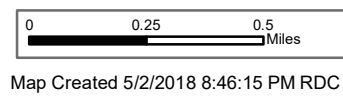
1	2
3	4
5	6
7	8





Incident
Day Operational Periods 5/3/2018

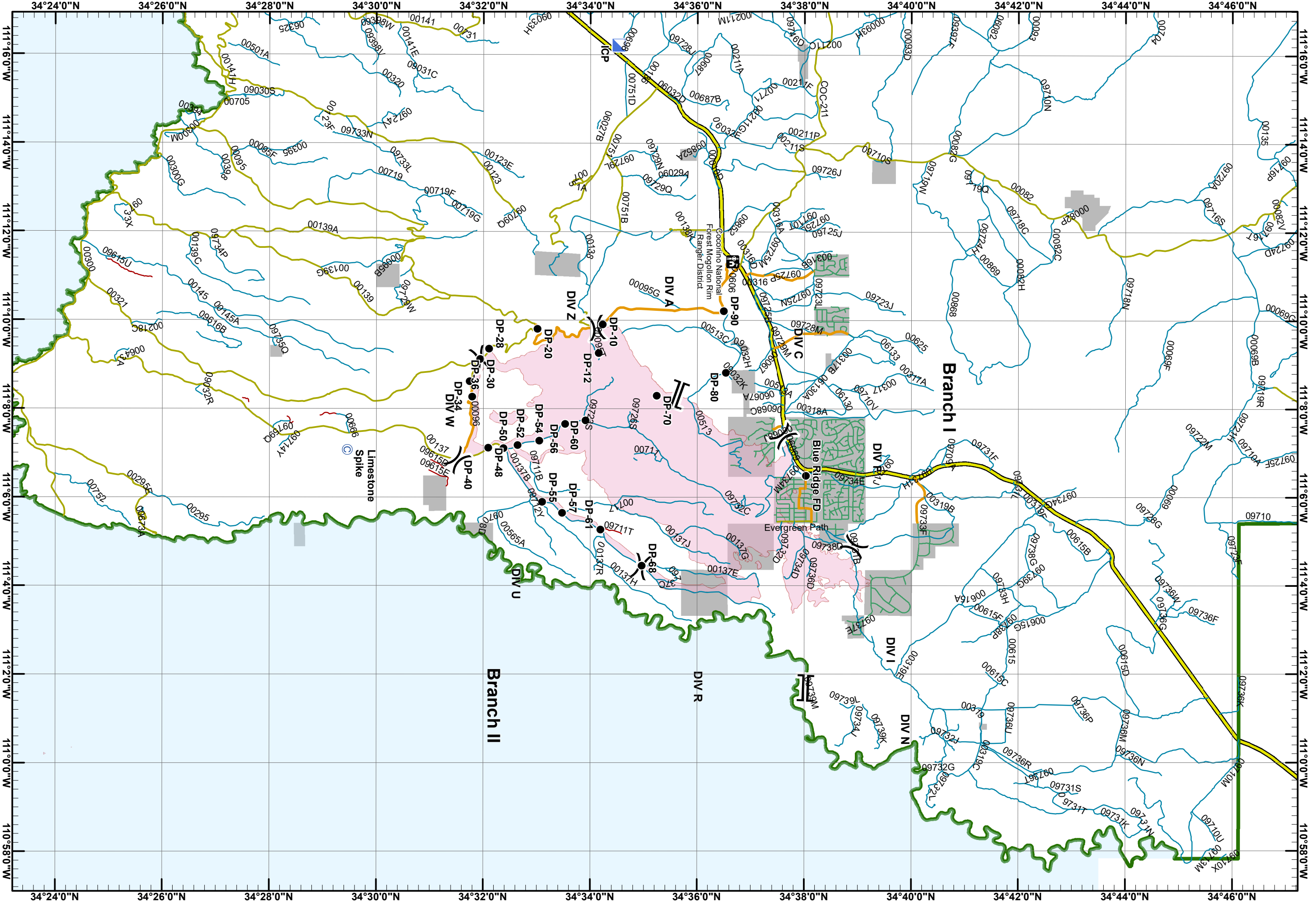
GIS Acres 12.467
 5/2/2018 13:00



- Structure Addresses
- Drop Point
- Road as Completed Line
- Camp
- Water Source
- Uncontrolled Fire Edge
- Private Ownership

1	2
3	4
5	6
7	8





Tinder Fire Incident Transportation Map
 Day Operational Periods 5/3/2018
 NAD 1983 UTM Zone 12N
 Map Created 5/2/2018 8:13:19 PM AJH

Level of Road Maintenance

- 1 - Closed Roads
- 2 - High Clearance Vehicles
- 3 - Suitable for Passenger Vehicles
- 4 - Moderate Degree of User Comfort
- 5 - High Degree of User Comfort

Level of Fire

- 1 - Closed Roads
- 2 - High Clearance Vehicles
- 3 - Suitable for Passenger Vehicles
- 4 - Moderate Degree of User Comfort
- 5 - High Degree of User Comfort

Other Symbols:

- Subdivision Streets
- Camp
- Drop Point
- Incident Command Post
- Division Break
- Branch Break
- Wildfire Daily Fire Perimeter
- Private Ownership
- Forest Boundary

Scale: 0, 0.5, 1, 2 Miles
 Map Created 5/2/2018 8:13:19 PM AJH