

**Tinder Incident Index Map**

GIS Acres 15,841  
5/4/2018 19:45

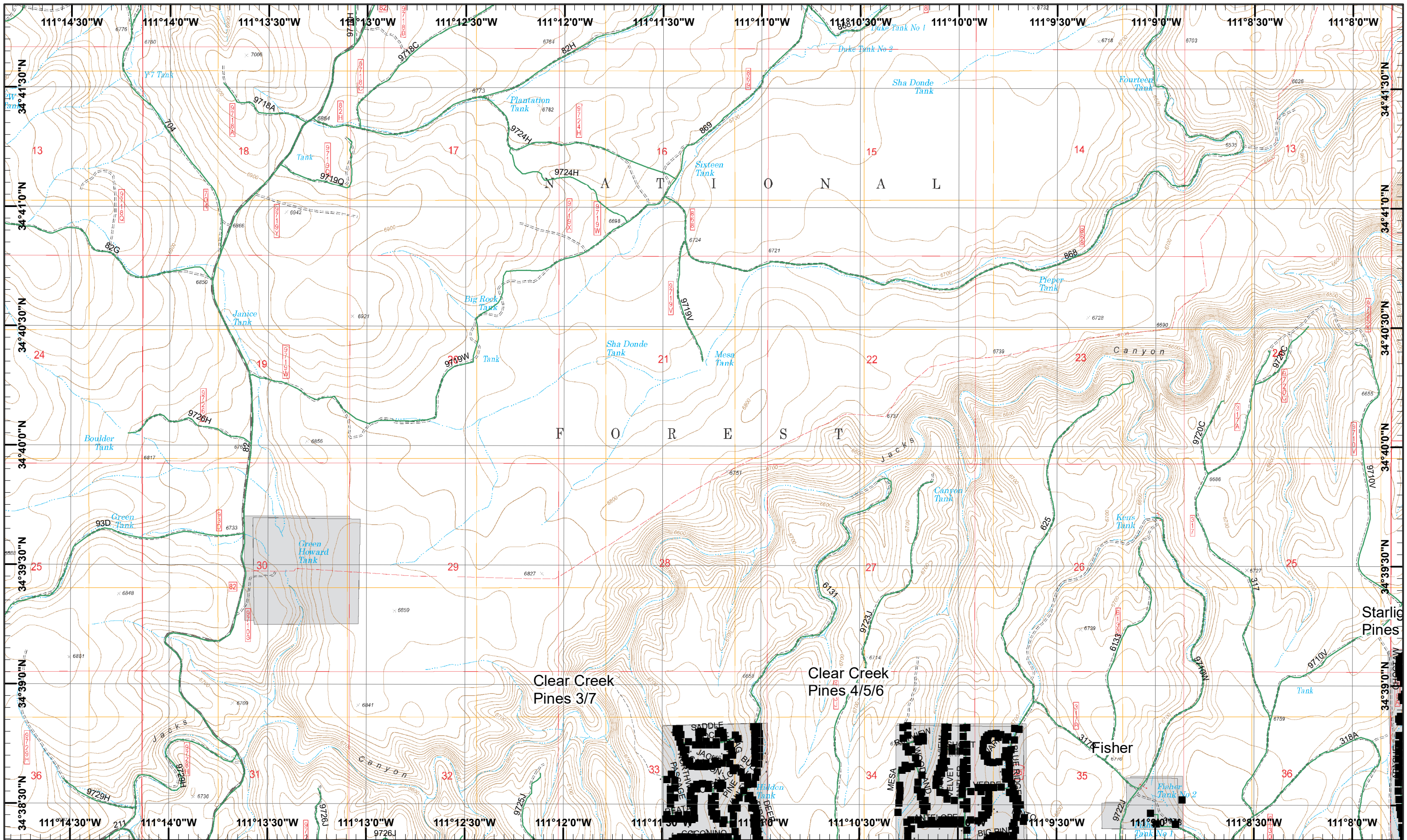
0 0.5 1 Miles

Day Operational Periods 5/5/2018

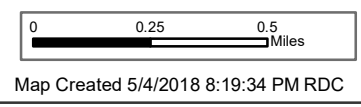
Map Created 5/4/2018 8:25:14 PM RDC



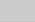
Forest Boundary	Fire Origin	Lookout	Staging Area	Road as Completed Line
Value at Risk	Helispot	Mobile Weather Unit	Water Source	Completed Dozer Line
Camp	Incident Command Post	Repeater	Access or Improved Road	Completed Hand Line
Drop Point			Completed Line	Uncontrolled Fire Edge

) Division  
] Branch



**Tinder Incident**  
 GIS Acres 15,841  
 5/4/2018 19:45  
 Day Operational Periods 5/5/2018

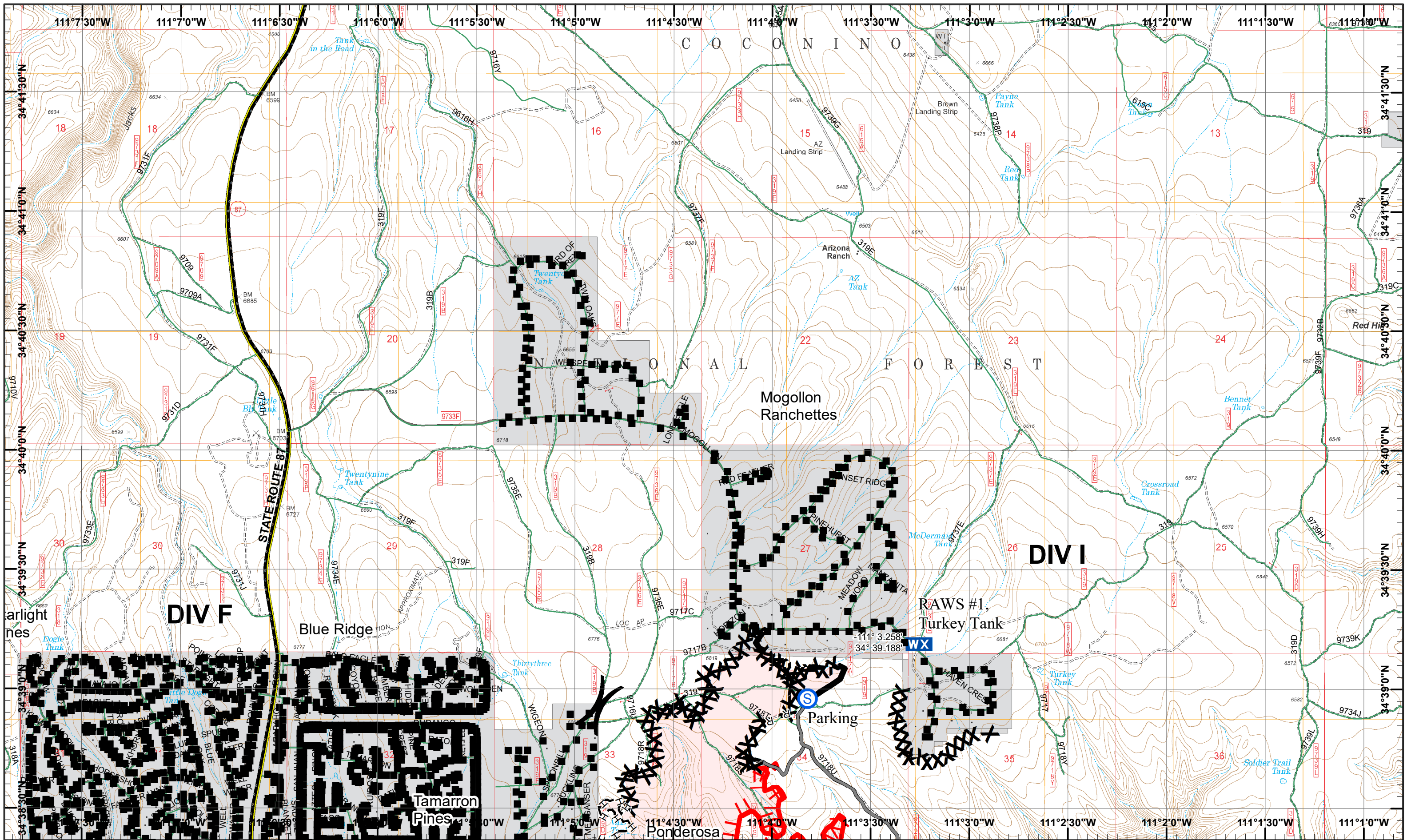



 Structure Addresses  
 Private Ownership

1	2
3	4
5	6
7	8

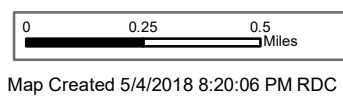
**Page 1**  
 )( Division  
 ][ Branch





**Tinder Incident**  
 Day Operational Periods 5/5/2018

GIS Acres 15,841  
 5/4/2018 19:45



■ Structure Addresses  
 WX Mobile Weather Unit

Ⓢ Staging Area  
 — Access or Improved Road

— Completed Line  
 R—R Road as Completed Line

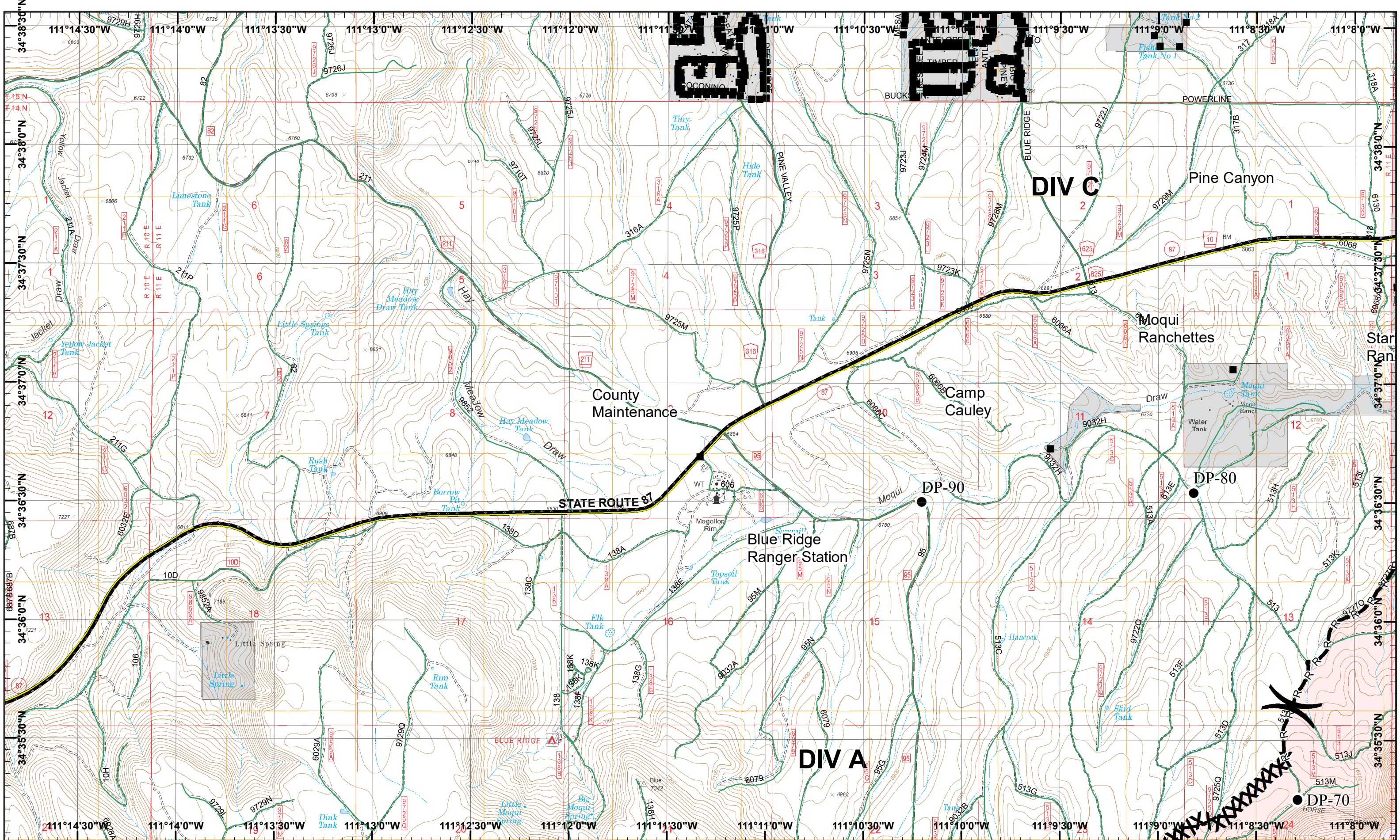
XXX Completed Dozer Line  
 H—H Completed Hand Line

▭ Uncontrolled Fire Edge  
 ▭ Private Ownership

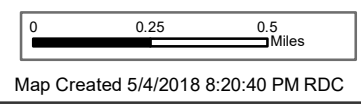
1	2
3	4
5	6
7	8

Page 2  
 )( Division  
 ][ Branch





**Tinder Incident**  
 GIS Acres 15,841  
 5/4/2018 19:45  
 Day Operational Periods 5/5/2018

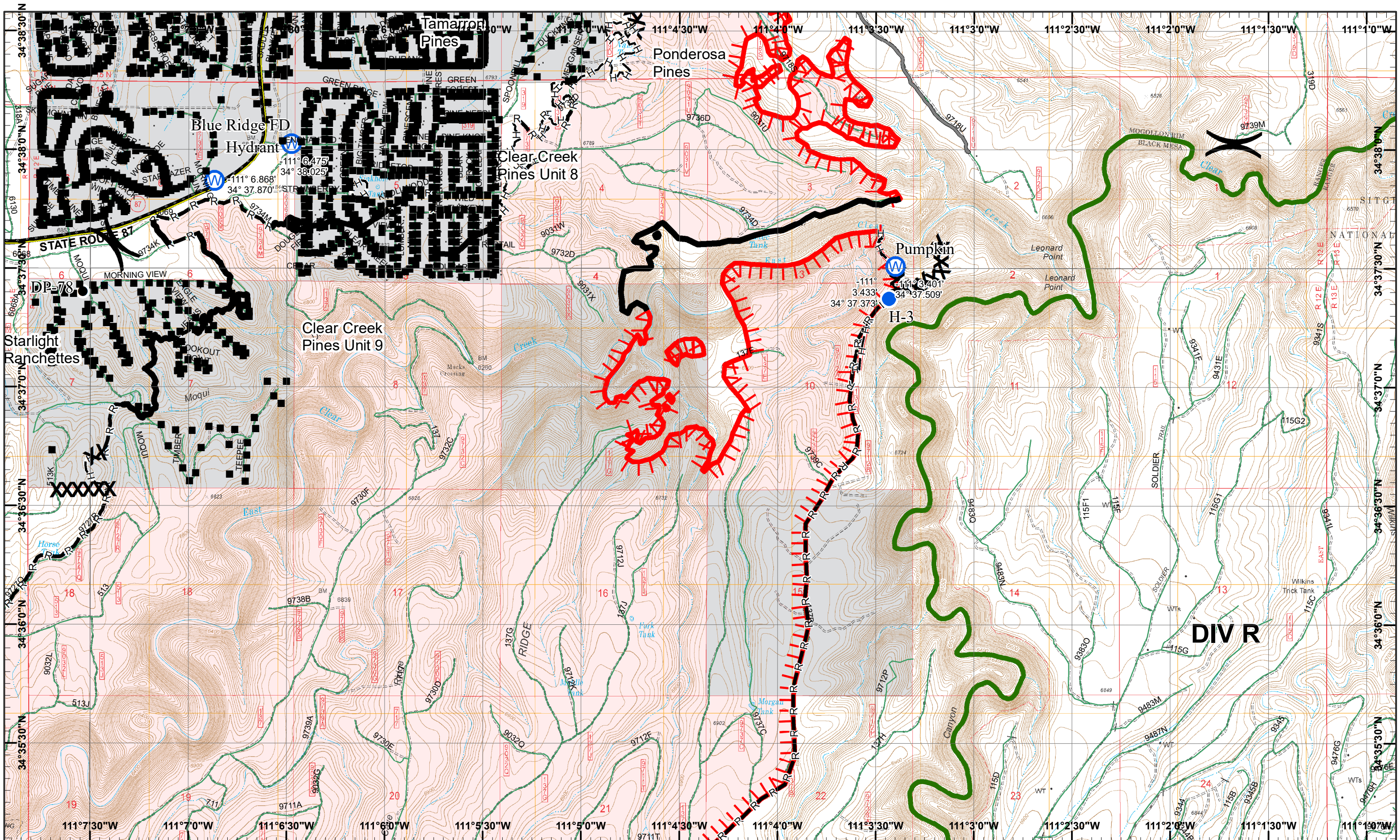


- Structure Addresses
- Drop Point
- Completed Dozer Line
- Private Ownership
- R-Road as Completed Line

1	2
3	4
5	6
7	8

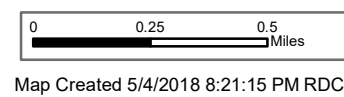
Page 3  
 )( Division  
 || Branch





**Tinder Incident**  
 Day Operational Periods 5/5/2018

GIS Acres 15,841  
 5/4/2018 19:45



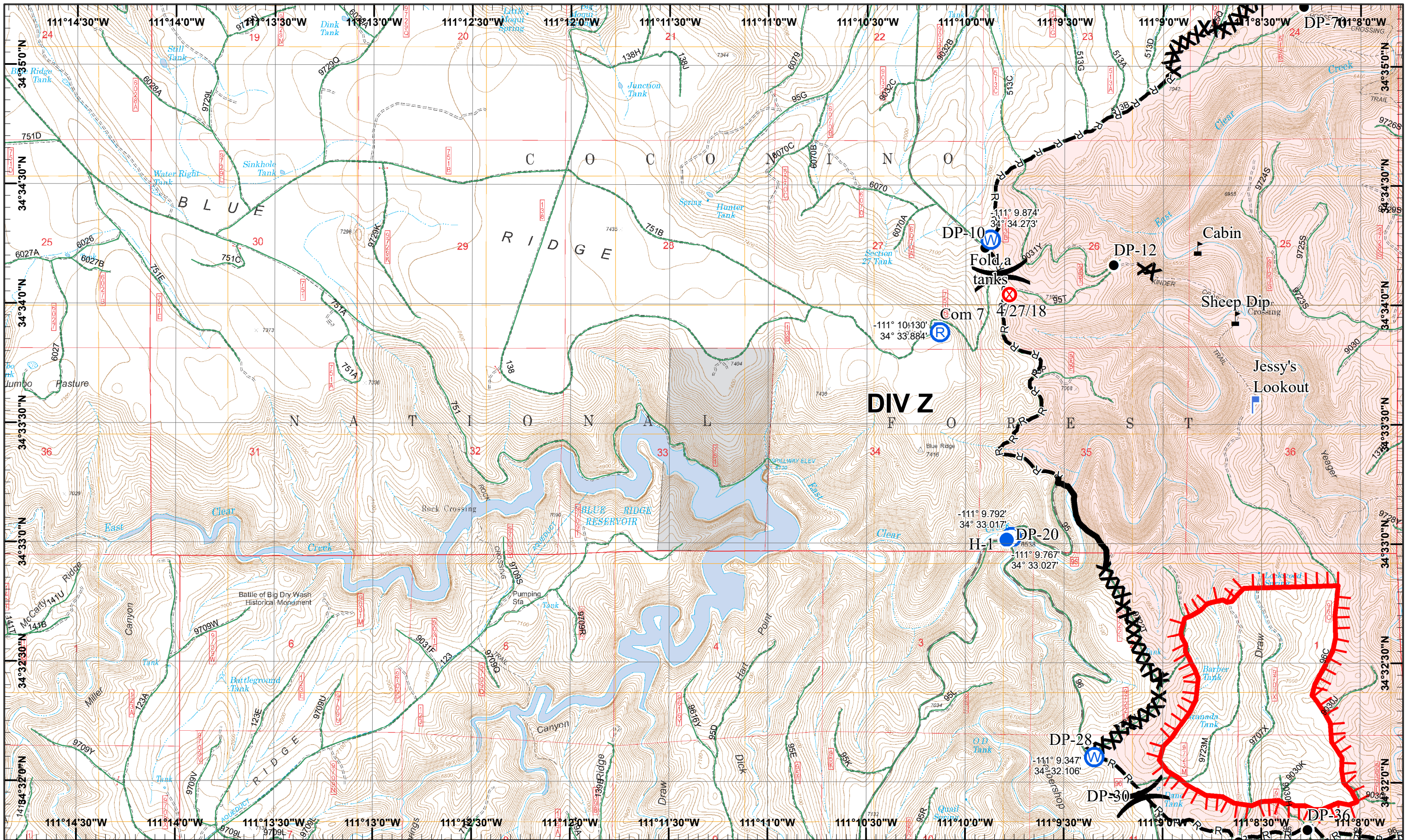
- Structure Addresses
- Drop Point
- Helispot
- W Water Source
- Access or Improved Road

- Completed Line
- R Road as Completed Line
- XXX Completed Dozer Line
- H Completed Hand Line
- TTT Uncontrolled Fire Edge

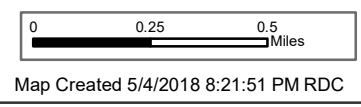
1	2
3	4
5	6
7	8

Page 4  
 )( Division  
 ][ Branch





**Tinder Incident**  
 GIS Acres 15,841  
 5/4/2018 19:45  
 Day Operational Periods 5/5/2018

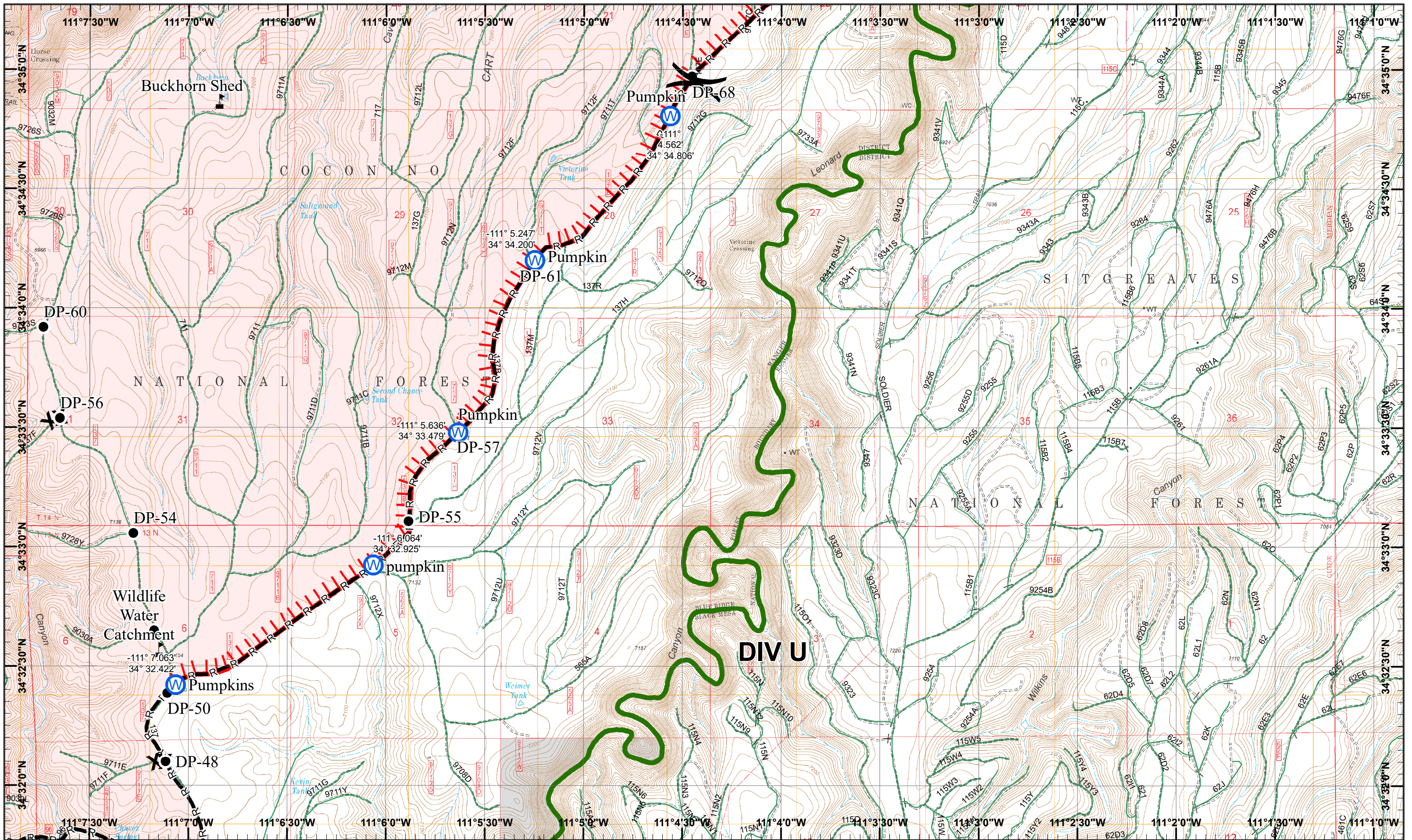


- Value at Risk
- Fire Origin
- Helispot
- Lookout
- Repeater
- Water Source
- Completed Line
- Completed Dozer Line
- Drop Point

1	2
3	4
5	6
7	8

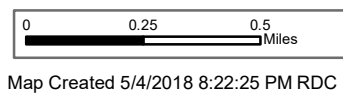
Page 5  
 )( Division  
 || Branch





**Tinder Incident**  
 Day Operational Periods 5/5/2018

GIS Acres 15,841  
 5/4/2018 19:45

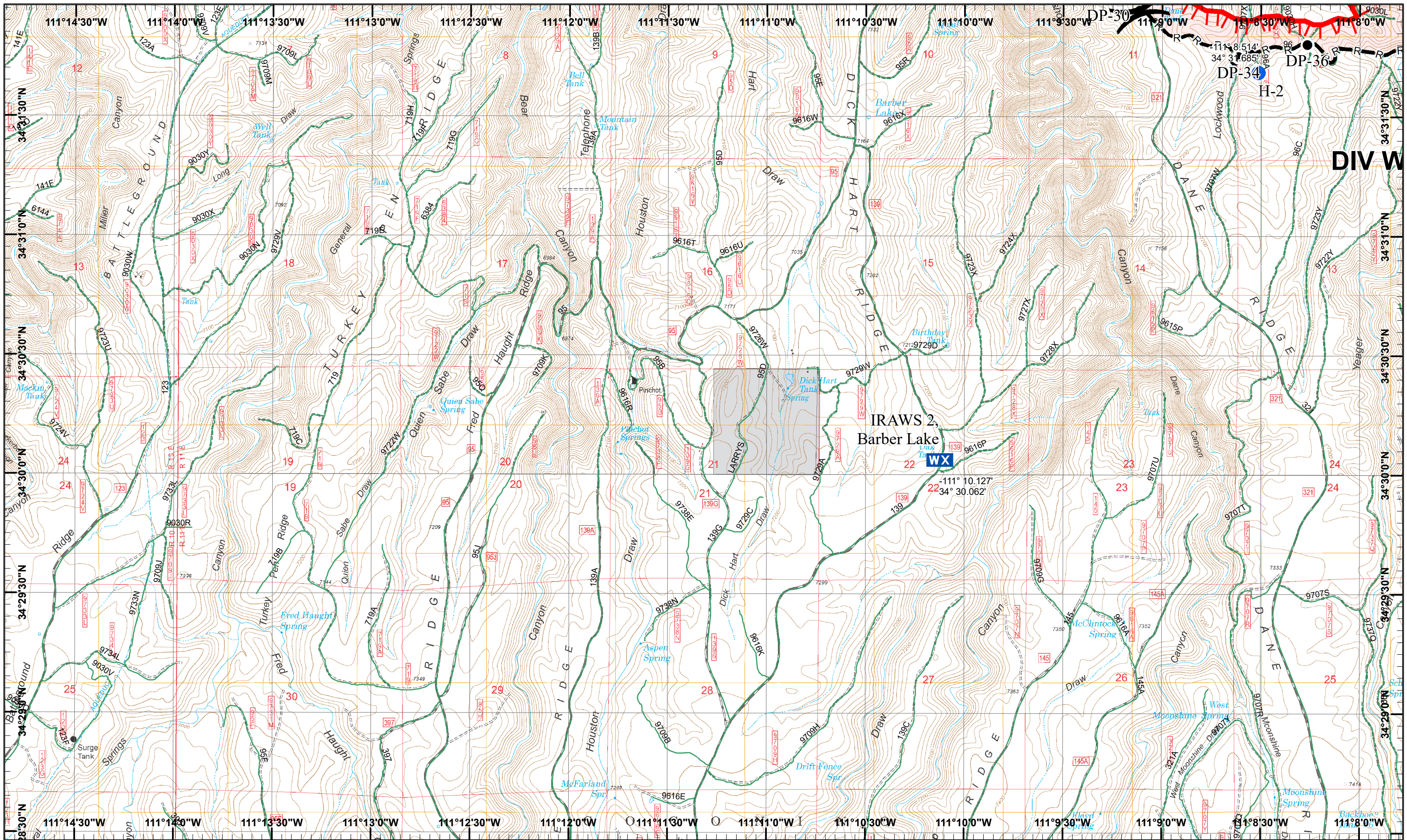


- Value at Risk
- Water Source
- Completed Dozer Line
- Private Ownership
- Drop Point
- Road as Completed Line
- Uncontrolled Fire Edge

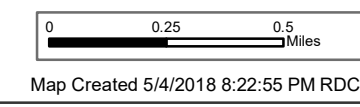
1	2
3	4
5	6
7	8

Page 6  
 )( Division  
 || Branch





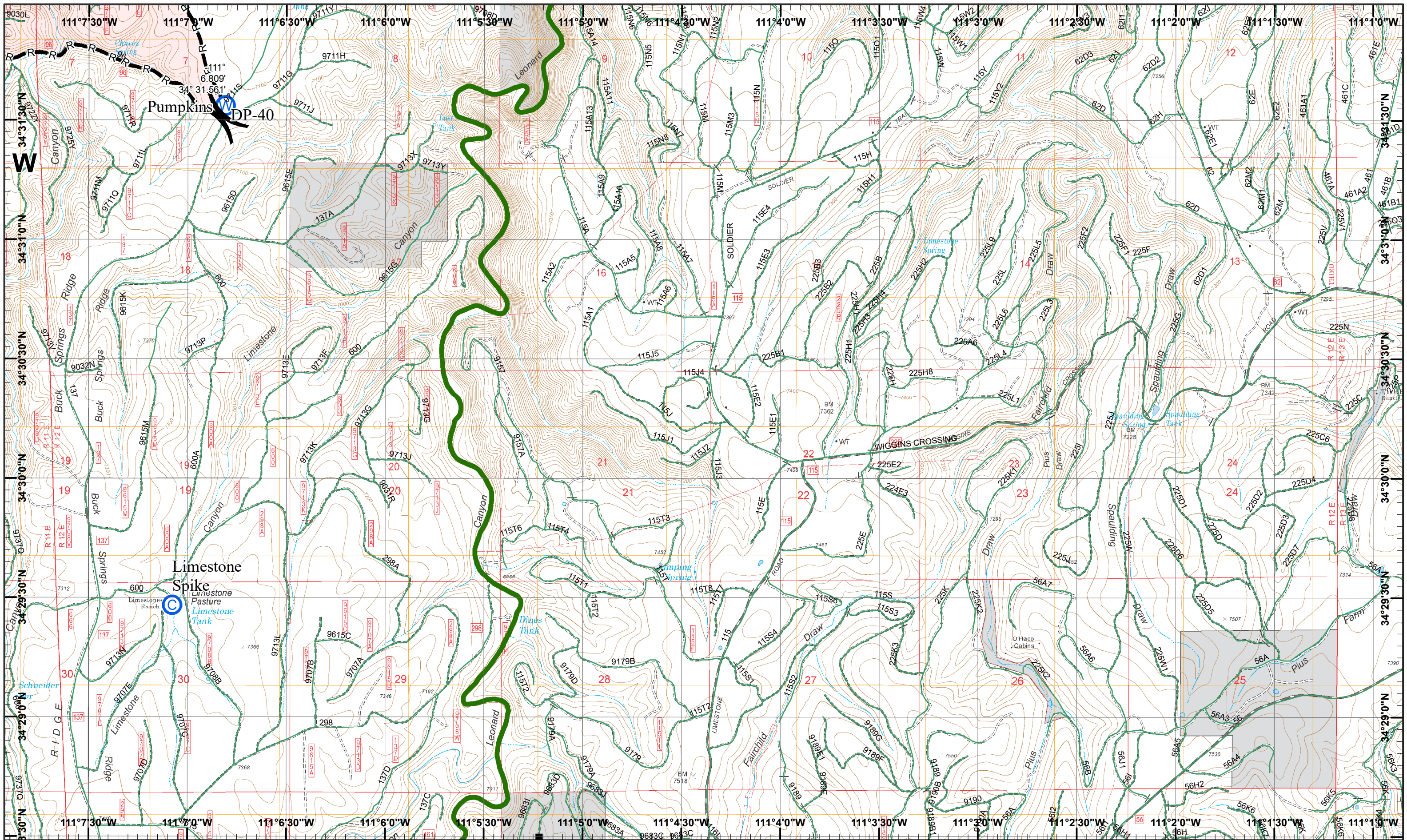
**Under Incident**  
 Day Operational Periods 5/5/2018



- North
- Drop Point
- Mobile Weather Unit
- Uncontrolled Fire Edge
- Helispot
- Road as Completed Line
- Private Ownership

1	2
3	4
5	6
7	8



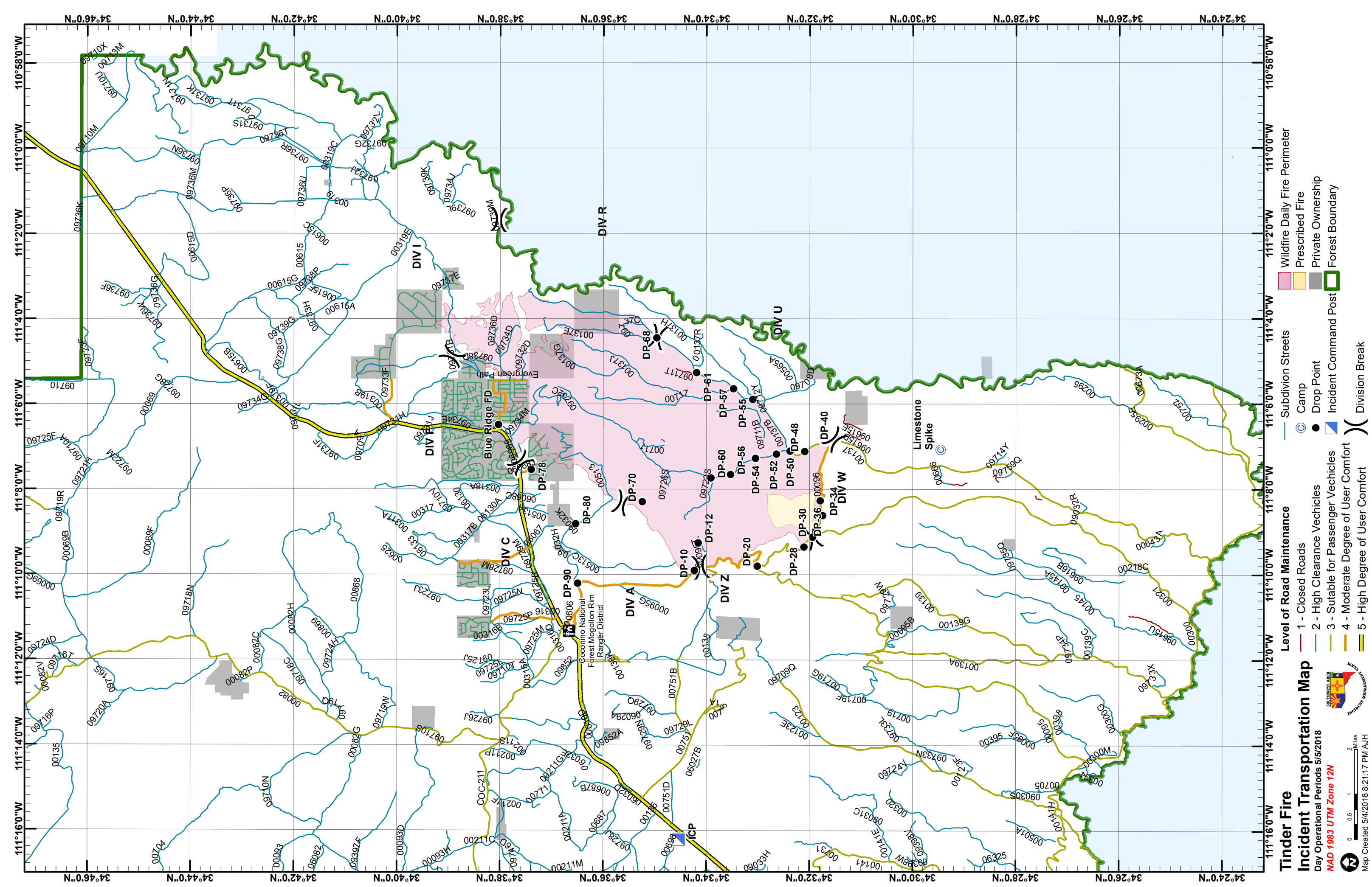


**Finder Incident**  
 Day Operational Periods 5/5/2018

GIS Acres 15.841  
 5/4/2018 19:45  
 Map Created 5/4/2018 8:23:26 PM RDC

▲ Structure Addresses
● Drop Point
— R Road as Completed Line  
Ⓢ Camp
Ⓜ Water Source
■ Private Ownership

1	2
3	4
5	6
7	8

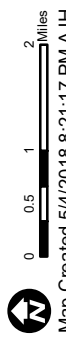


### Tinder Fire

### Incident Transportation Map

Day Operational Periods 5/5/2018

NAD 1983 UTM Zone 12N



Map Created 5/4/2018 8:21:17 PM A.J.H.

### Level of Road Maintenance

- 1 - Closed Roads
- 2 - High Clearance Vehicles
- 3 - Suitable for Passenger Vehicles
- 4 - Moderate Degree of User Comfort
- 5 - High Degree of User Comfort

### Wildfire Daily Fire Perimeter

- Subdivision Streets
- Camp
- Drop Point
- Incident Command Post
- Division Break

### Prescribed Fire

- Private Ownership
- Forest Boundary