


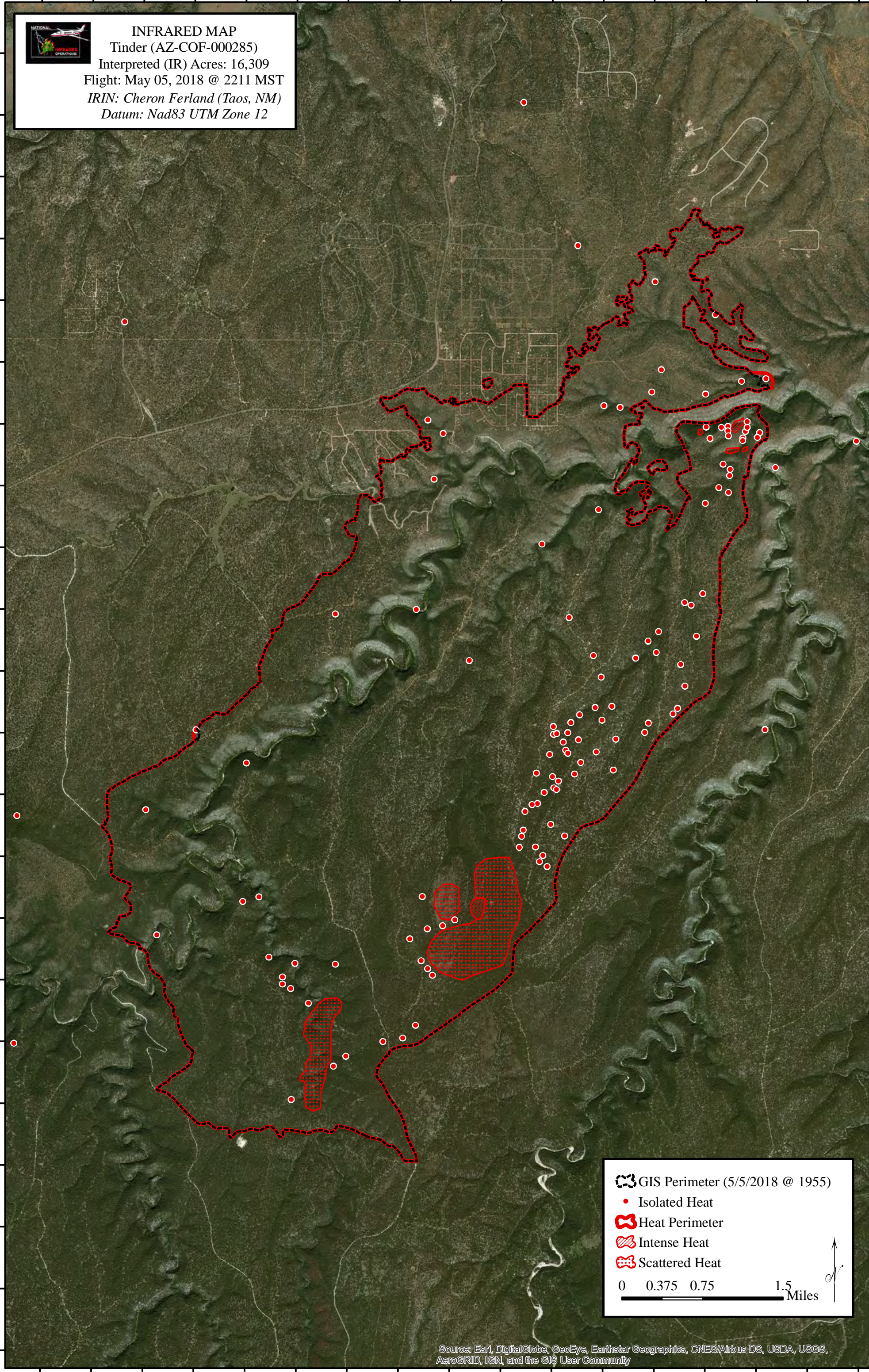
111°10'30"W 111°9'30"W 111°8'30"W 111°7'30"W 111°6'30"W 111°5'30"W 111°4'30"W 111°3'30"W 111°2'30"W






34°40'30"N 34°40'00"N 34°39'30"N 34°39'00"N 34°38'30"N 34°38'00"N 34°37'30"N 34°37'00"N 34°36'30"N 34°36'00"N 34°35'30"N 34°35'00"N 34°34'30"N 34°34'00"N 34°33'30"N 34°33'00"N 34°32'30"N 34°32'00"N 34°31'30"N 34°31'00"N 34°30'30"N 34°30'00"N

34°40'30"N 34°40'00"N 34°39'30"N 34°39'00"N 34°38'30"N 34°38'00"N 34°37'30"N 34°37'00"N 34°36'30"N 34°36'00"N 34°35'30"N 34°35'00"N 34°34'30"N 34°34'00"N 34°33'30"N 34°33'00"N 34°32'30"N 34°32'00"N 34°31'30"N 34°31'00"N 34°30'30"N 34°30'00"N



INFRARED MAP
 Tinder (AZ-COF-000285)
 Interpreted (IR) Acres: 16,309
 Flight: May 05, 2018 @ 2211 MST
 IRIN: Cheron Ferland (Taos, NM)
 Datum: Nad83 UTM Zone 12



 GIS Perimeter (5/5/2018 @ 1955)
 Isolated Heat
 Heat Perimeter
 Intense Heat
 Scattered Heat
 0 0.375 0.75 1.5 Miles



Source: Esri, DigitalGlobe, GeoEye, Earthstar Geographics, CNES/Airbus DS, USDA, USGS, AeroGRID, IGN, and the GIS User Community

111°10'30"W 111°9'30"W 111°8'30"W 111°7'30"W 111°6'30"W 111°5'30"W 111°4'30"W 111°3'30"W 111°2'30"W