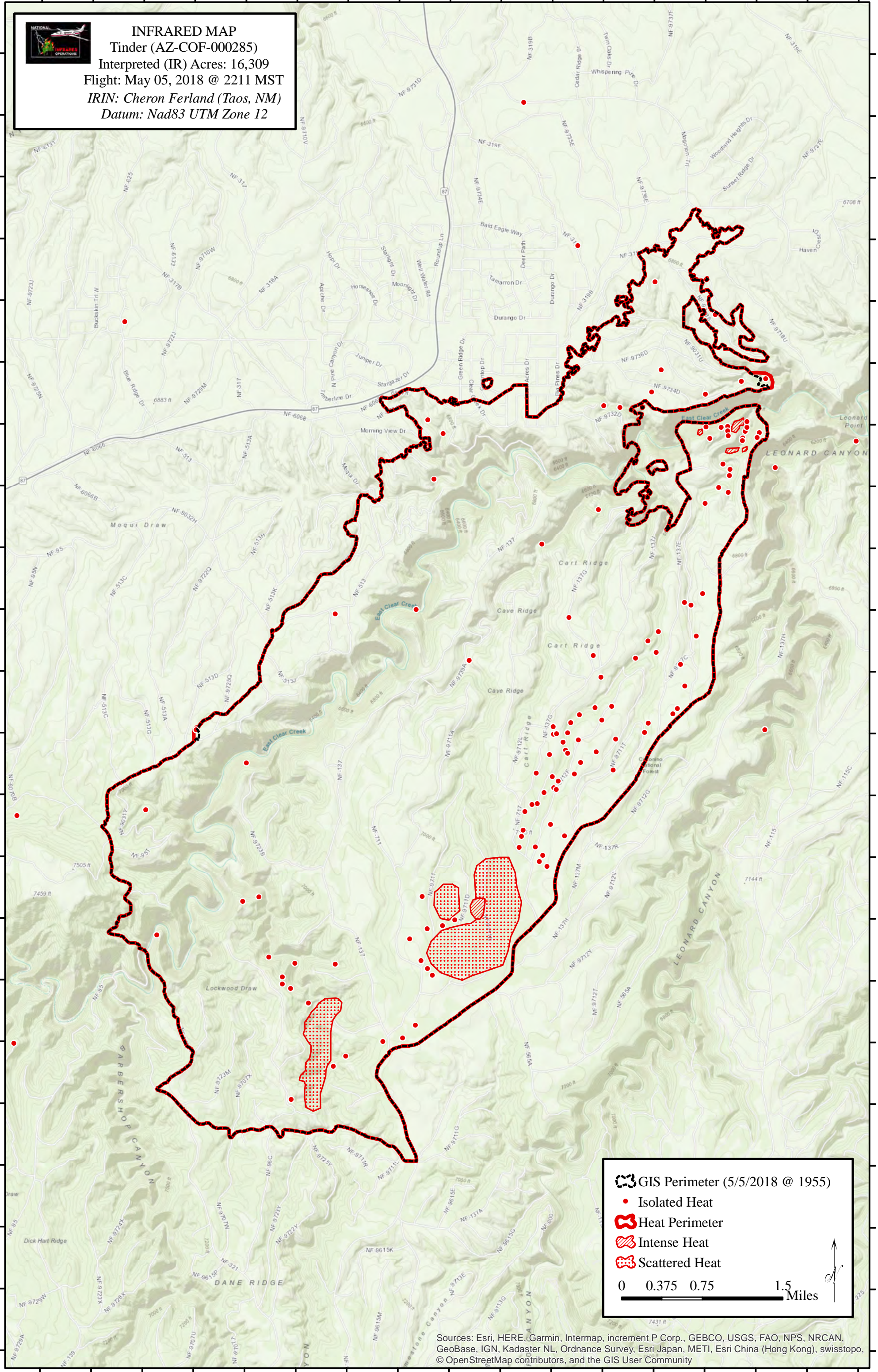


111°10'30"W 111°9'30"W 111°8'30"W 111°7'30"W 111°6'30"W 111°5'30"W 111°4'30"W 111°3'30"W 111°2'30"W

34°30'0"N 34°30'30"N 34°31'0"N 34°31'30"N 34°32'0"N 34°32'30"N 34°33'0"N 34°33'30"N 34°34'0"N 34°34'30"N 34°35'0"N 34°35'30"N 34°36'0"N 34°36'30"N 34°37'0"N 34°37'30"N 34°38'0"N 34°38'30"N 34°39'0"N 34°39'30"N 34°40'0"N 34°40'30"N



**INFRARED MAP**  
Tinder (AZ-COF-000285)  
Interpreted (IR) Acres: 16,309  
Flight: May 05, 2018 @ 2211 MST  
IRIN: Cheron Ferland (Taos, NM)  
Datum: Nad83 UTM Zone 12



GIS Perimeter (5/5/2018 @ 1955)

Isolated Heat

Heat Perimeter

Intense Heat

Scattered Heat

0 0.375 0.75 1.5 Miles

Sources: Esri, HERE, Garmin, Intermap, increment P Corp., GEBCO, USGS, FAO, NPS, NRCAN, GeoBase, IGN, Kadaster NL, Ordnance Survey, Esri Japan, METI, Esri China (Hong Kong), swisstopo, © OpenStreetMap contributors, and the GIS User Community

111°10'30"W 111°9'30"W 111°8'30"W 111°7'30"W 111°6'30"W 111°5'30"W 111°4'30"W 111°3'30"W 111°2'30"W