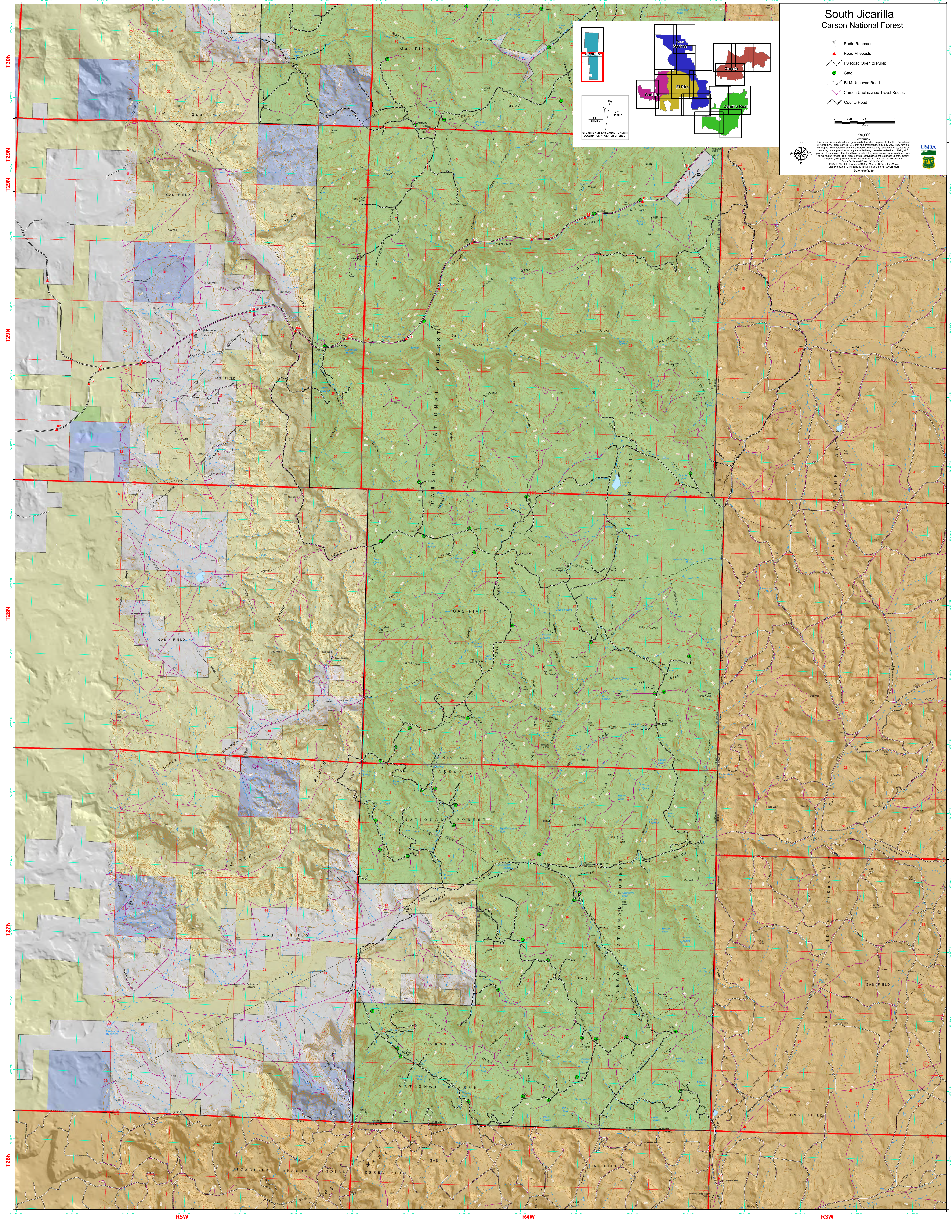
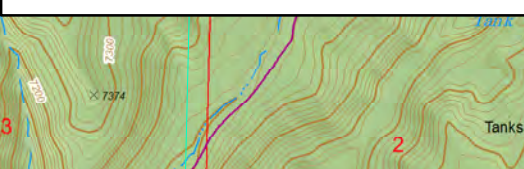
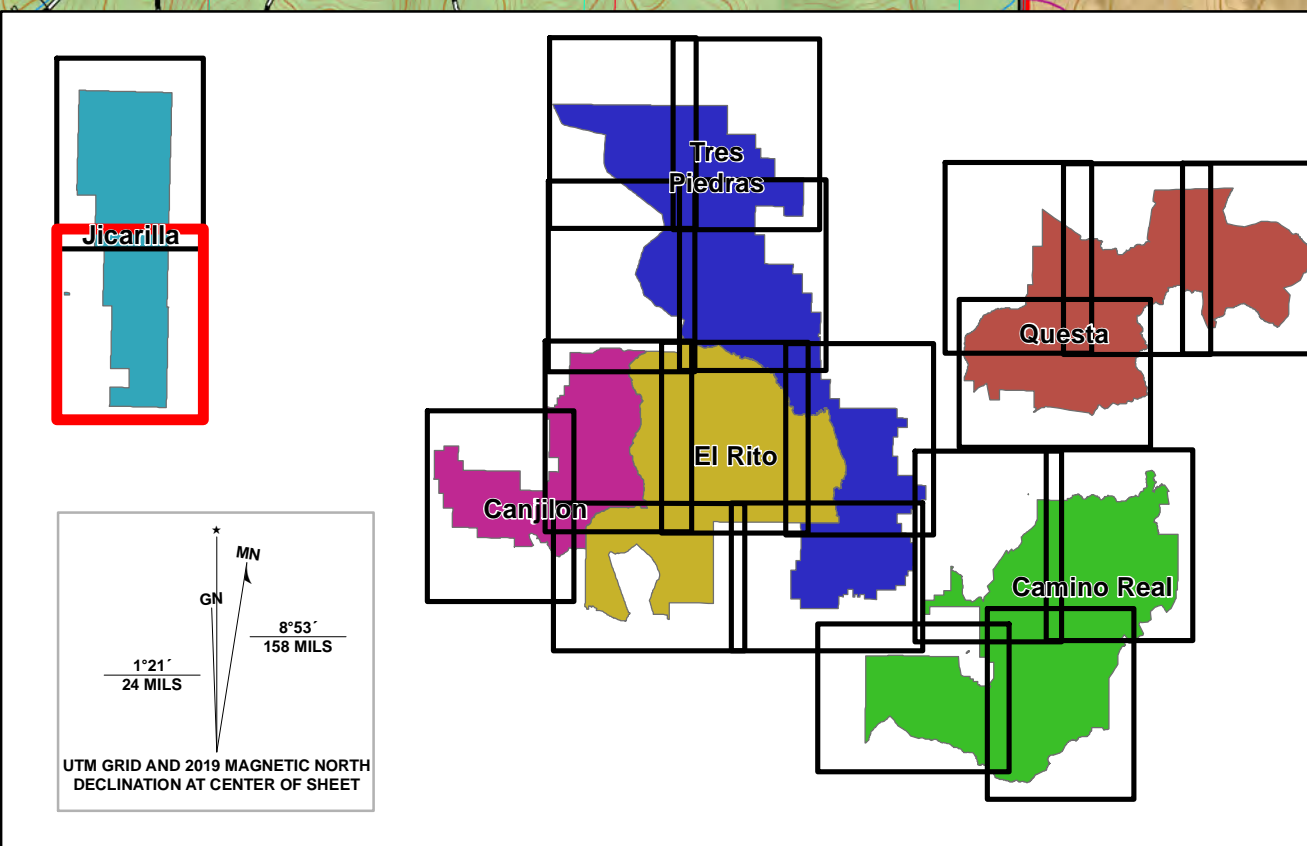


South Jicarilla Carson National Forest

- Radio Repeater
- Road Mileposts
- FS Road Open to Public
- Gate
- BLM Unpaved Road
- Carson Unclassified Travel Routes
- County Road

1:30,000

ATTENTION
This product is reproduced from geospatial information processed by the U.S. Department of Agriculture, Forest Service. GIS data and product accuracy may vary. They may be affected by changes in data sources, accuracy, or other factors. Therefore, products for purposes other than those for which they were intended may pose inaccurate or misleading information. The Forest Service reserves the right to correct, update, modify, or replace GIS products without notice. For more information, contact:
National Center for Geographic Information Science
Department of Agricultural and Forest Sciences
Data Processor: LTRM Zone 13 NAD83, Series Fx MF 500 GIS-HCI
Date: 01/10/2019



T30N
T29N
T28N
T27N
T26N

T30N
T29N
T28N
T27N
T26N

R5W

R4W

R3W