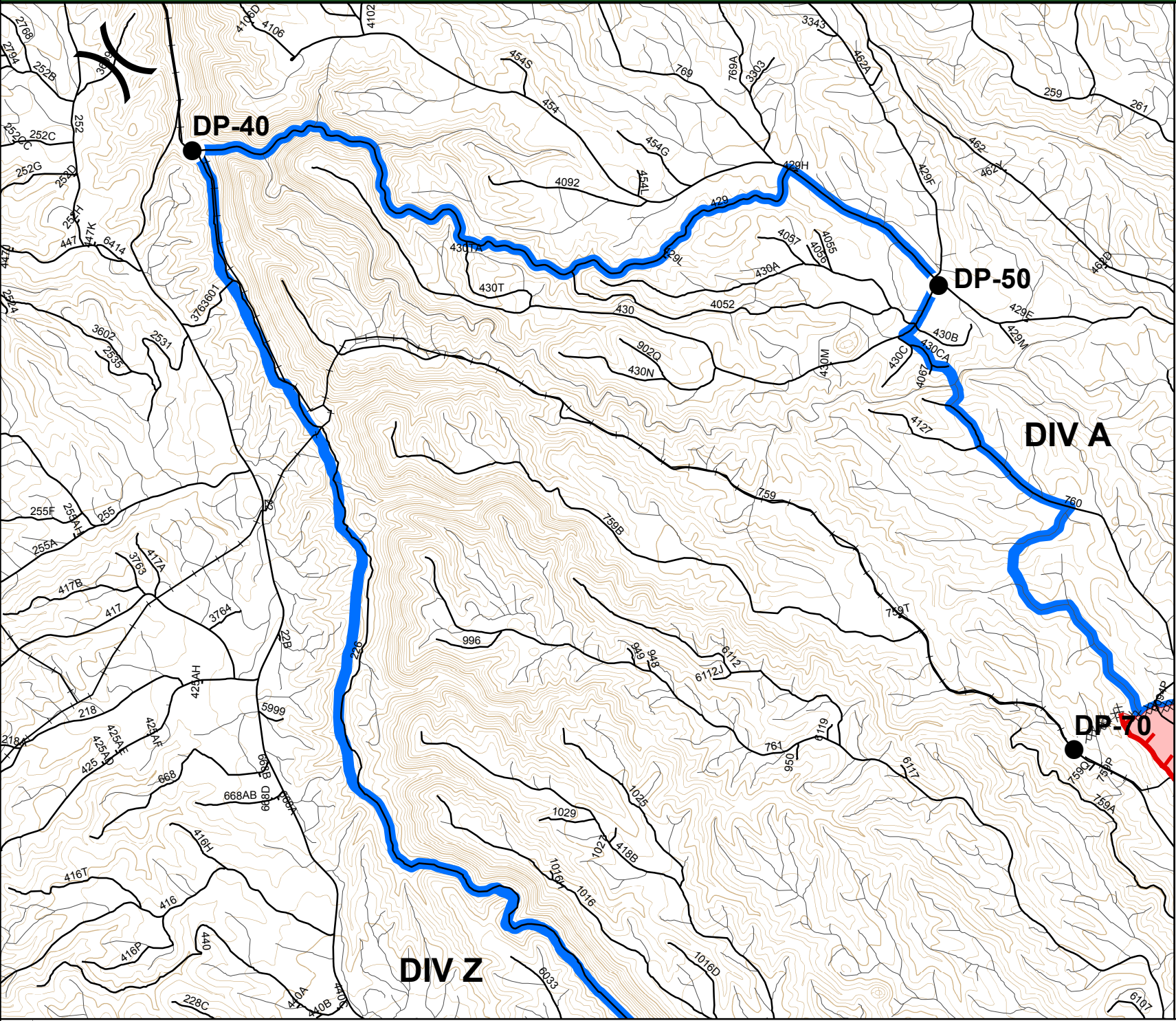



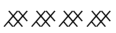
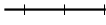





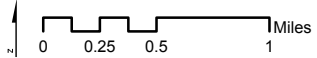
Incident Action Plan Map

Castle Fire
AZ-KNF-000499
July 18, 2019 Day
Operational Period

Approx 197 ac



-  Drop Point
-  Division Break
-  Uncontrolled Fire Edge
-  Completed Dozer Line
-  Fence
-  Wildfire Daily Fire Perimeter
-  Road
-  Planning Area



This product is reproduced from geospatial information prepared by the Kaibab National Forest. Geospatial information and GIS product accuracy may vary. Using GIS products for purposes other than those for which they were created may yield inaccurate or misleading results. Kaibab National Forest reserves the right to correct, update, modify or replace GIS products without notification.

NAD 1983 UTM 12N
Decimal Degrees Minutes
Prepared by D. Tyler
July 16th 2019, 2000 hrs