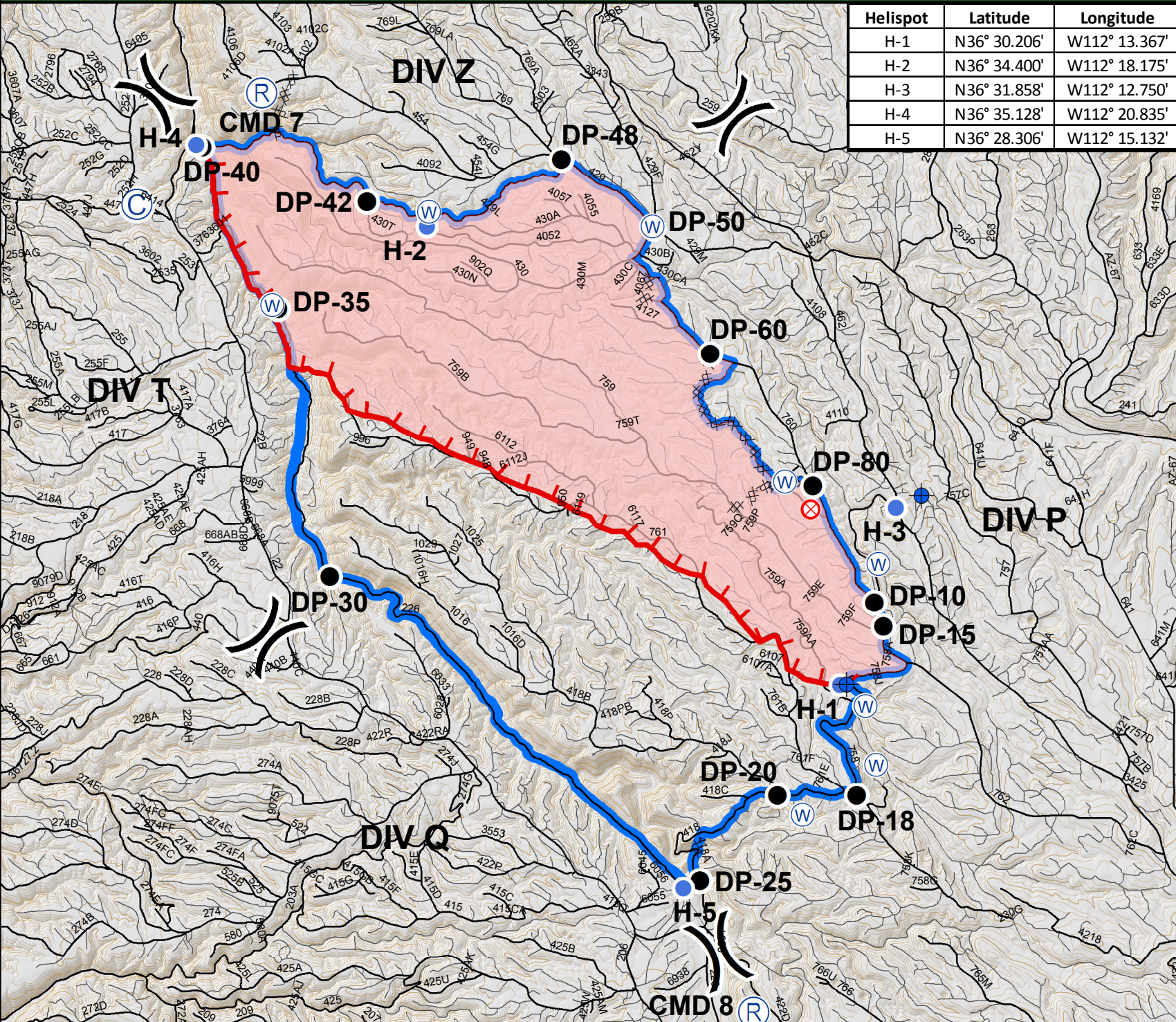


Helispot	Latitude	Longitude
H-1	N36° 30.206'	W112° 13.367'
H-2	N36° 34.400'	W112° 18.175'
H-3	N36° 31.858'	W112° 12.750'
H-4	N36° 35.128'	W112° 20.835'
H-5	N36° 28.306'	W112° 15.132'

### Incident Action Plan Map

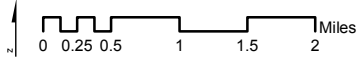
**Castle Fire**  
AZ-KNF-000499  
Aug 2nd, 2019 Day  
Operational Period

Approx 10,800 ac



- Spike Camp
- Dip Site
- Drop Point
- Fire Origin
- Helispot
- Repeater
- Water Source
- Division Break
- Uncontrolled Fire Edge
- Completed Dozer Line
- Wildfire Daily Fire Perimeter
- Planning Area

NAD 1983 UTM 12N  
Decimal Degrees Minutes  
Prepared by R. Grow  
Aug 1st 2019, 1839 hours



This product is reproduced from geospatial information prepared by the Kaibab National Forest. Geospatial information and GIS product accuracy may vary. Using GIS products for purposes other than those for which they were created may yield inaccurate or misleading results. Kaibab National Forest reserves the right to correct, update, modify or replace GIS products without notification.