

MAP 2

Condition: Fire spread continues into unnamed drainage to the SW of the fire.

Actions: Firing operations will continue along FR760 road to DP15. Firing operations will begin along dozer line from DP80 to DP50.

Resources: 1 ICT3, 1 TFLD, 2 Hand crews, 4 engines-Type 6 or larger, 1 Water Tender, 2 FIRB

MAP 3

Condition: Fire spread crosses or is likely to cross Castle Canyon.

Actions: Consider firing operations from DP 50 to 45 to decrease likely hood of fire threatening FR 429. Consider firing operations on ridge tops to reduce potential for high severity fire effects in upper Castle Canyon.

Resources: 1 ICT3, 1 TFLD (DIVS), 1-2 Hand Crews, 2-3 Engines, 1 Firing Boss, 1 Water Tender, 1 T3 Helicopter with PSD or hand ignition devices if preferred, 1 Ariel firing boss

MAP 4

Condition: Fire continues to move down drainages and ridge tops adjacent to FR429.

Actions: Consider firing from DP 45 to 40. Consider firing ridgetops adjacent to FR429 prior to black lining to reduce the potential for high severity fire effects on steep slopes in Castle Canyon.

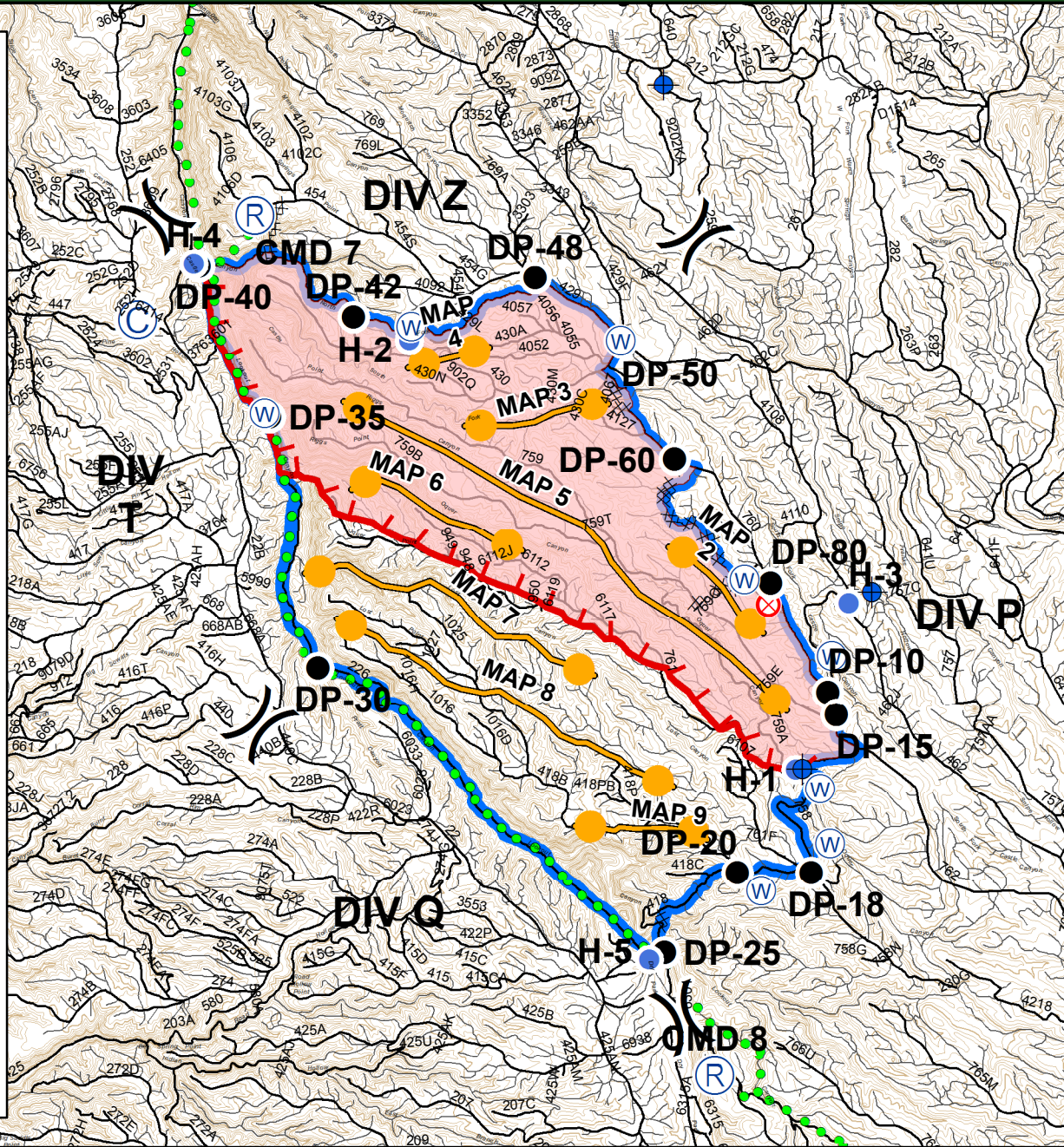
Resources: 1 ICT3, 1 TFLD (DIVS), 2 Hand Crews, 2-4 Engines, 1 Firing Boss, 1 T3 Helicopter with PSD capabilities, 1 Ariel firing boss

MAP 5

Condition: Fire crosses or is likely to cross FR759.

Actions: Consider firing operations from DP 15 to Oquer meadow.

Resources: 1 ICT3, 1 TFLD (DIVS), 1-2 Hand Crews, 2-4 Engines, 1 Water Tender



MAP 6

Condition: Fire moves into Oquer drainage.

Actions: Consider firing from H1 to DP-20. Consider firing operations on ridgeline systems along FR761 to reduce high severity fire effects. Consider firing operations near rigs point to back fire off slope into lookout canyon near rigs spring.

Resources: 1 ICT3, 1 TFLD (DIVS), 2 Hand Crews, 2-4 Engines, 1 Firing Boss, 1 T3 Helicopter with PSD, 1 Ariel firing boss.

MAP 7

Condition: Fire moves into, or is likely to move into, Lost Canyon.

Actions: Consider firing the ridge system adjacent to FR 418B and blacklining from Oquer Canyon to Lost Canyon along FR 226. Consider using PSD to back fire off Oquer point to reduce chances for High Severity fire on west aspect and drainages.

Resources: 1 ICT3, 1 TFLD (DIVS), 1 Hand Crew, 2-4 Engines, 1 Firing Boss, 1 T3 Helicopter with PSD, 1 Ariel firing boss.

MAP 8

Condition: Fire crosses or is likely to cross FR418B.

Actions: Consider firing ridge systems adjacent to FR1016 to reduce fire intensity. Consider backing fire off western points and south facing slopes in lookout canyon. Consider black lining FR226 to DP30 and south towards DP25.

Resources: 1 ICT3, 1 TFLD (DIVS), 2 Hand Crews, 2-4 Engines, 1 Firing Boss, 1 T3 Helicopter with PSD, 1 Ariel firing boss, 1 Water Tender.

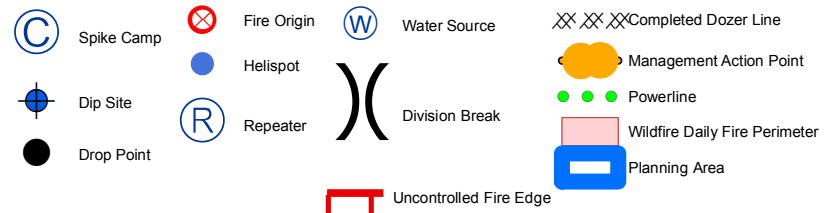
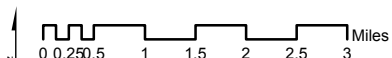
MAP 9

Condition: Fire is likely to move into Dugway Canyon.

Actions: Consider blacklining from DP20 to DP 25 in conjunction with backing fire down slope using PSD. Consider black lining the remainder of FR 226.

Resources: 1 ICT3, 1 TFLD (DIVS), 2-4 Hand Crews, 4-6 Engines, 2 Firing Bosses, 1 T3 Helicopter with PSD, 1 Ariel firing boss.

Management Action Point Map



Castle Fire
AZ-KNF-000499
Aug. 2nd, 2019 Day
Operational Period
Approx 10,800 ac

NAD 1983 UTM 12N
Decimal Degrees Minutes
Prepared by R. Grow
Aug. 1st, 2019, 1959 hrs