

**Cellar Incident Index Map**

GIS Acres 7,410  
7/18/2019 2100

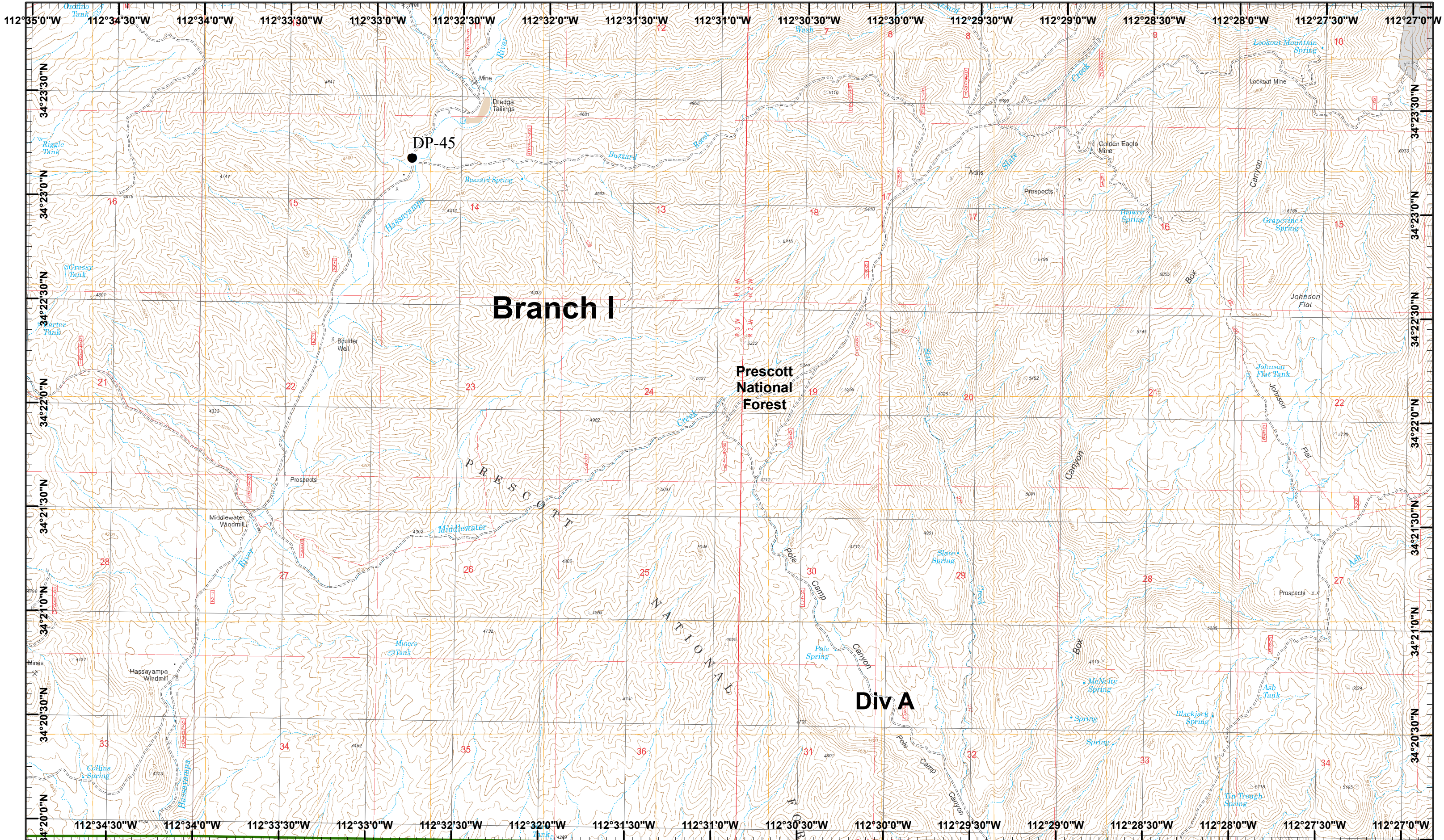
0 0.5 1 Miles

Day Operational Periods 7/20/2019

Map Created 7/19/2019 8:15:01 PM RDC

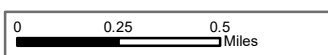
- North Arrow
- Value at Risk
- Drop Point
- Retardant/Mud Pit
- HCompleted Hand Line
- Dip Site
- Helispot
- Other
- Proposed Dozer Line
- Camp
- Hot Spot
- Temporary Flight Restriction
- Planned Secondary Line
- Uncontrolled Fire Edge
- Fire Perimeter
- Road as Completed Line

) Division  
|| Branch



**Cellar Incident**  
Day Operational Periods 7/20/2019

GIS Acres 7,410  
7/18/2019 2100



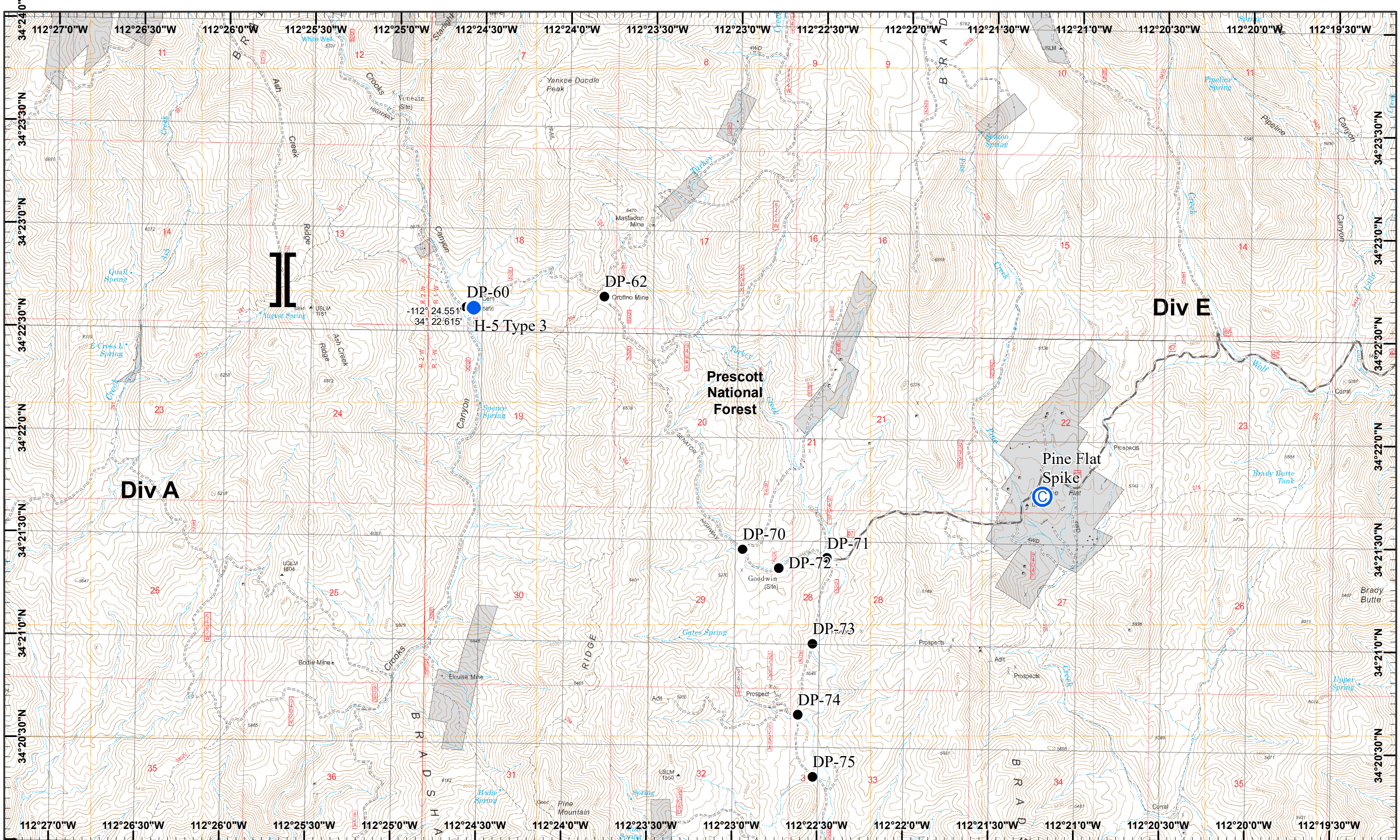
Drop Point

Map Created 7/19/2019 8:17:22 PM RDC

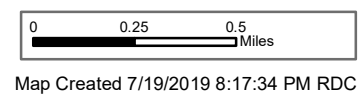
1	2
3	4
5	6
7	8

Page 1  
( ) Division  
[ ] Branch





**Cellar Incident**  
 GIS Acres 7,410  
 7/18/2019 2100  
 Day Operational Periods 7/20/2019

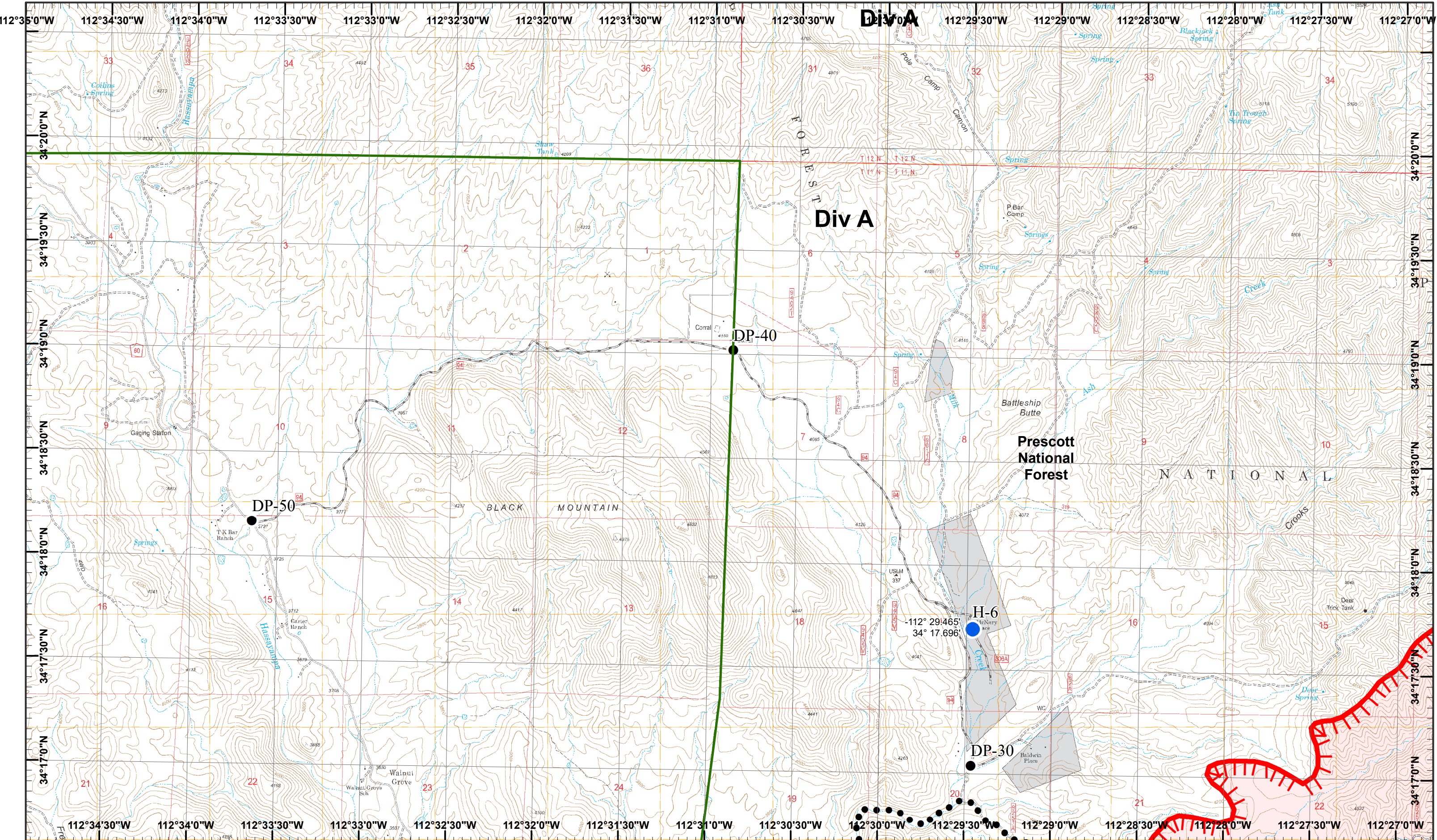


● Drop Point  
 ● Helispot

1	2
3	4
5	6
7	8

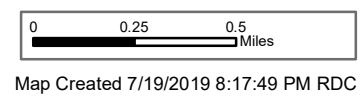
Page 2  
 (X) Division  
 [I] Branch





**Cellar Incident**  
 Day Operational Periods 7/20/2019

GIS Acres 7,410  
 7/18/2019 2100

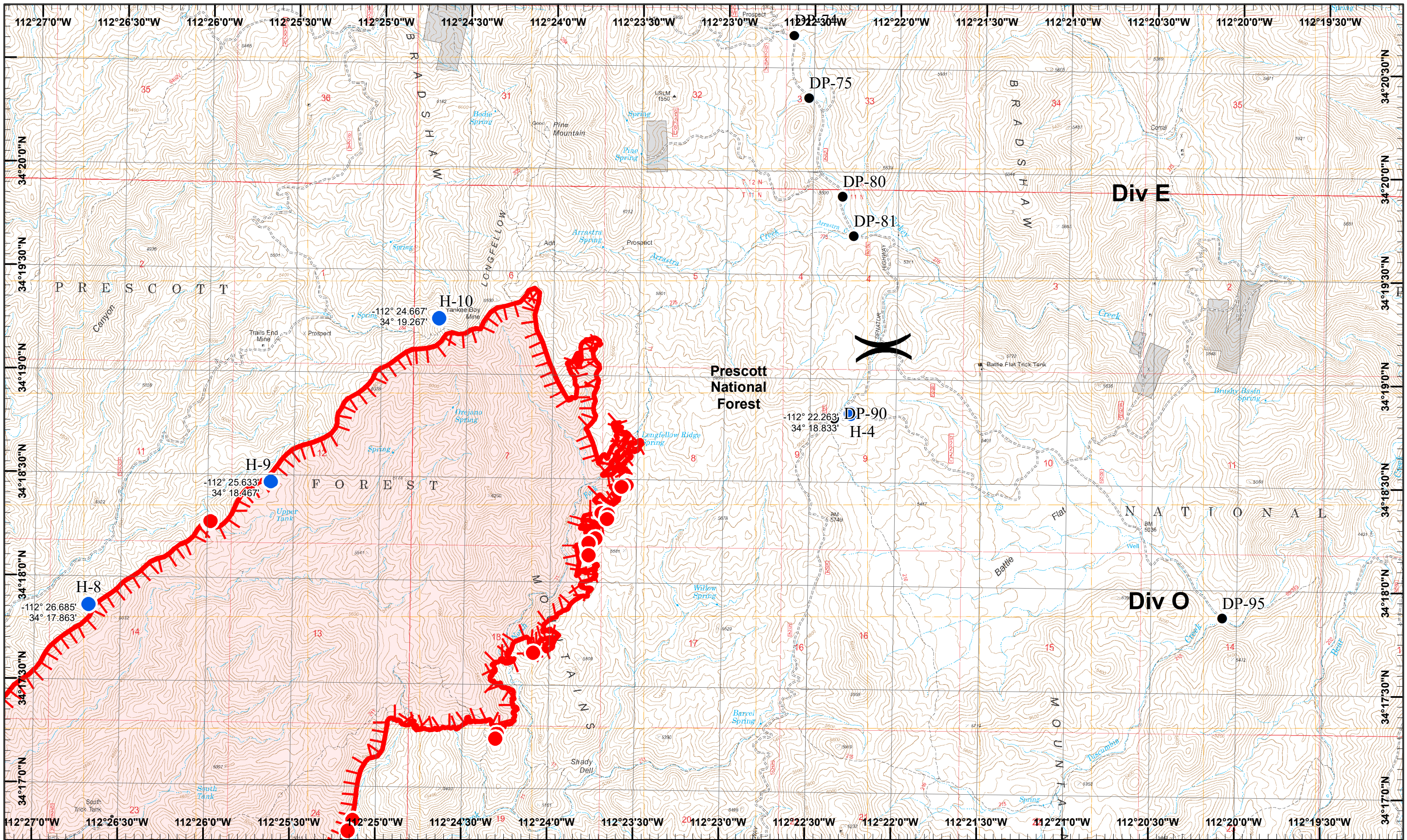


- North
- Drop Point
- Planned Secondary Line
- Helispot
- Uncontrolled Fire Edge

1	2
3	4
5	6
7	8

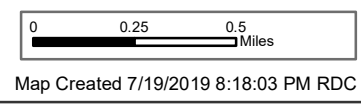
Page 3  
 ( ) Division  
 [ ] Branch





**Cellar Incident**  
 Day Operational Periods 7/20/2019

GIS Acres 7,410  
 7/18/2019 2100

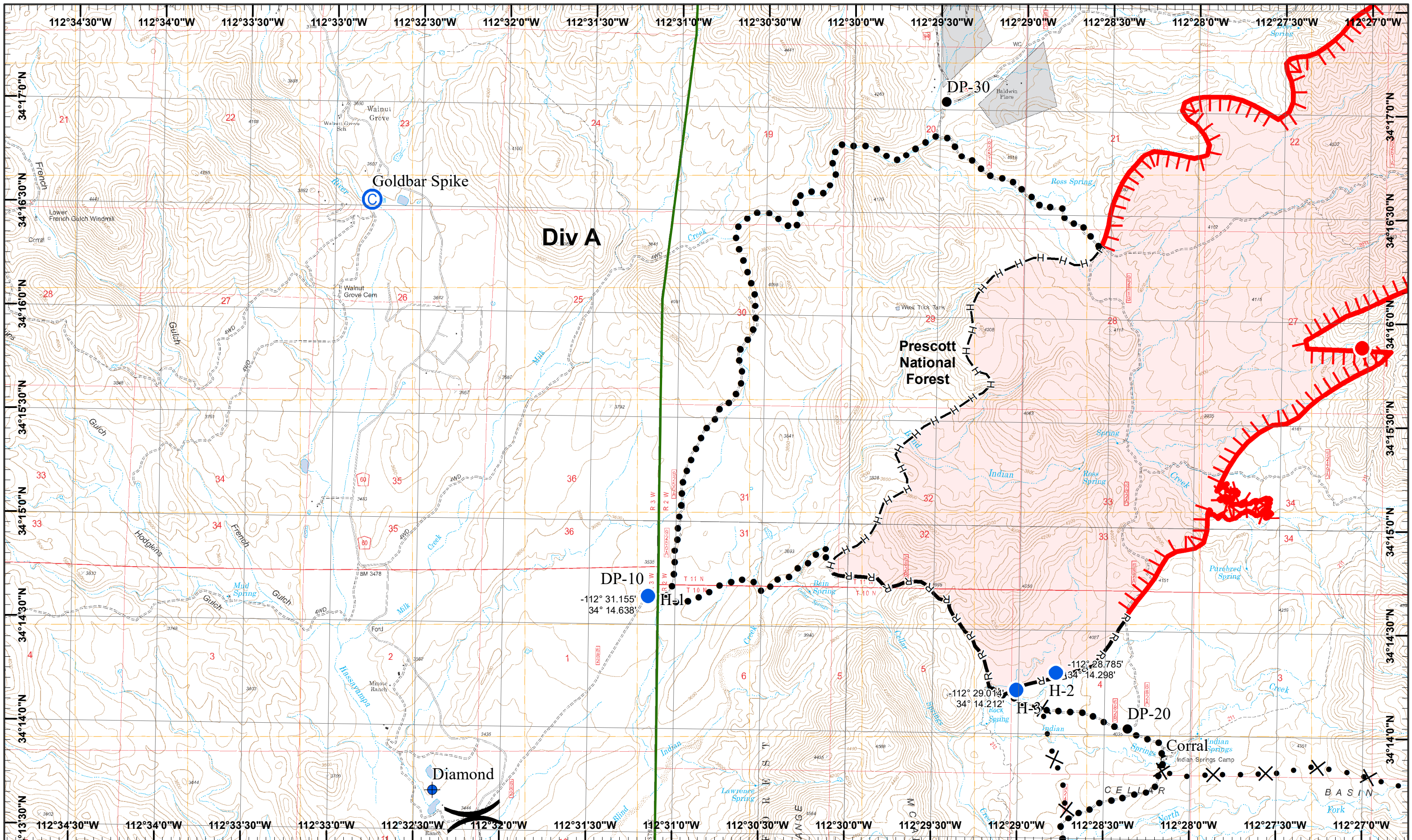


- North
- Drop Point
- Hot Spot
- Helispot
- Uncontrolled Fire Edge

1	2
3	4
5	6
7	8

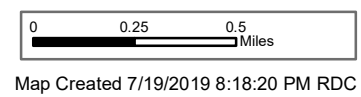
Page 4  
 X Division  
 I Branch





**Cellar Incident**  
 Day Operational Periods 7/20/2019

GIS Acres 7,410  
 7/18/2019 2100



Value at Risk  
 Dip Site

Camp

Drop Point

Helispot

R Road as Completed Line

H Completed Hand Line

Proposed Dozer Line

Planned Secondary Line

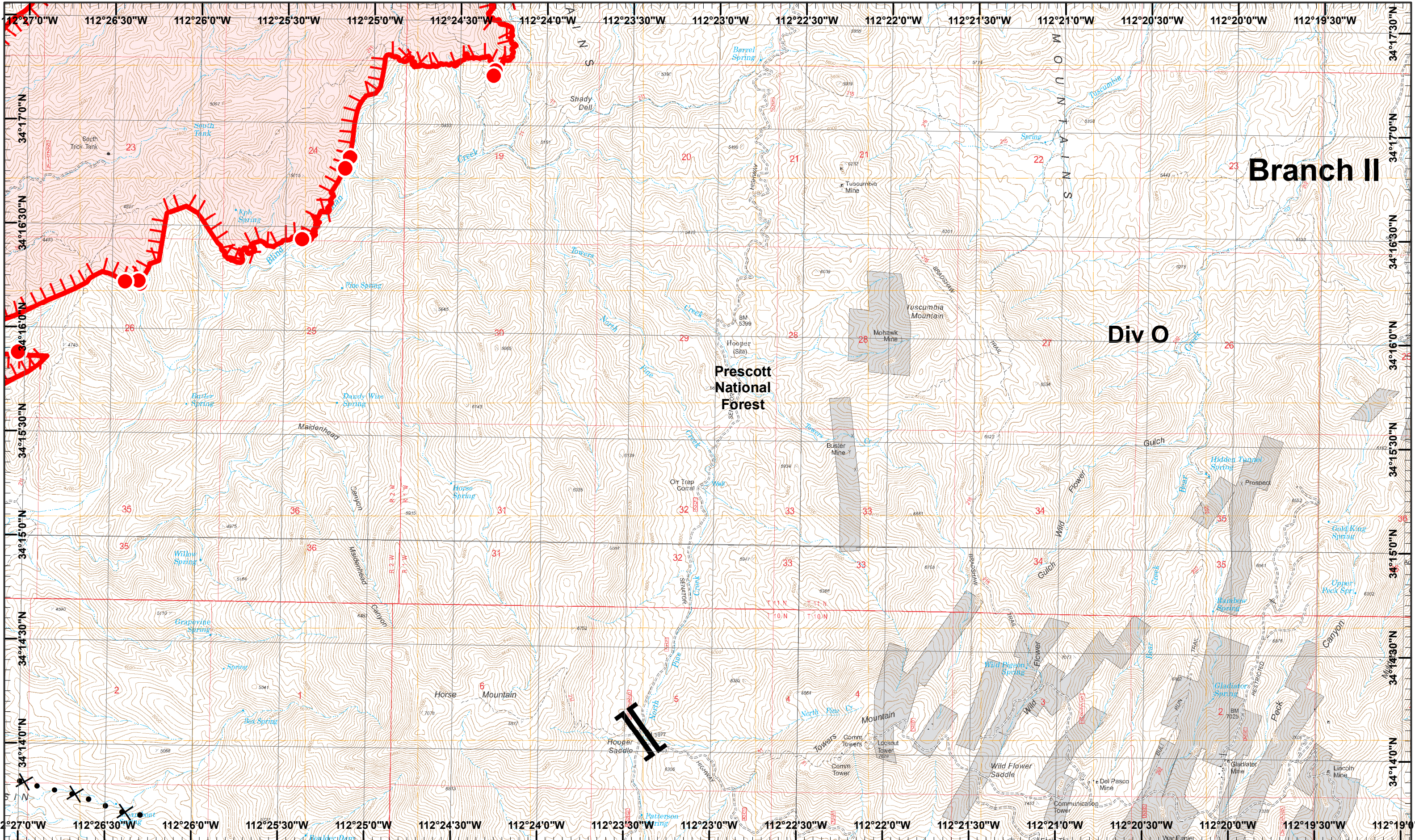
Hot Spot

Uncontrolled Fire Edge

1	2
3	4
5	6
7	8

Page 5  
 Division  
 Branch



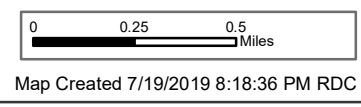


**Branch II**

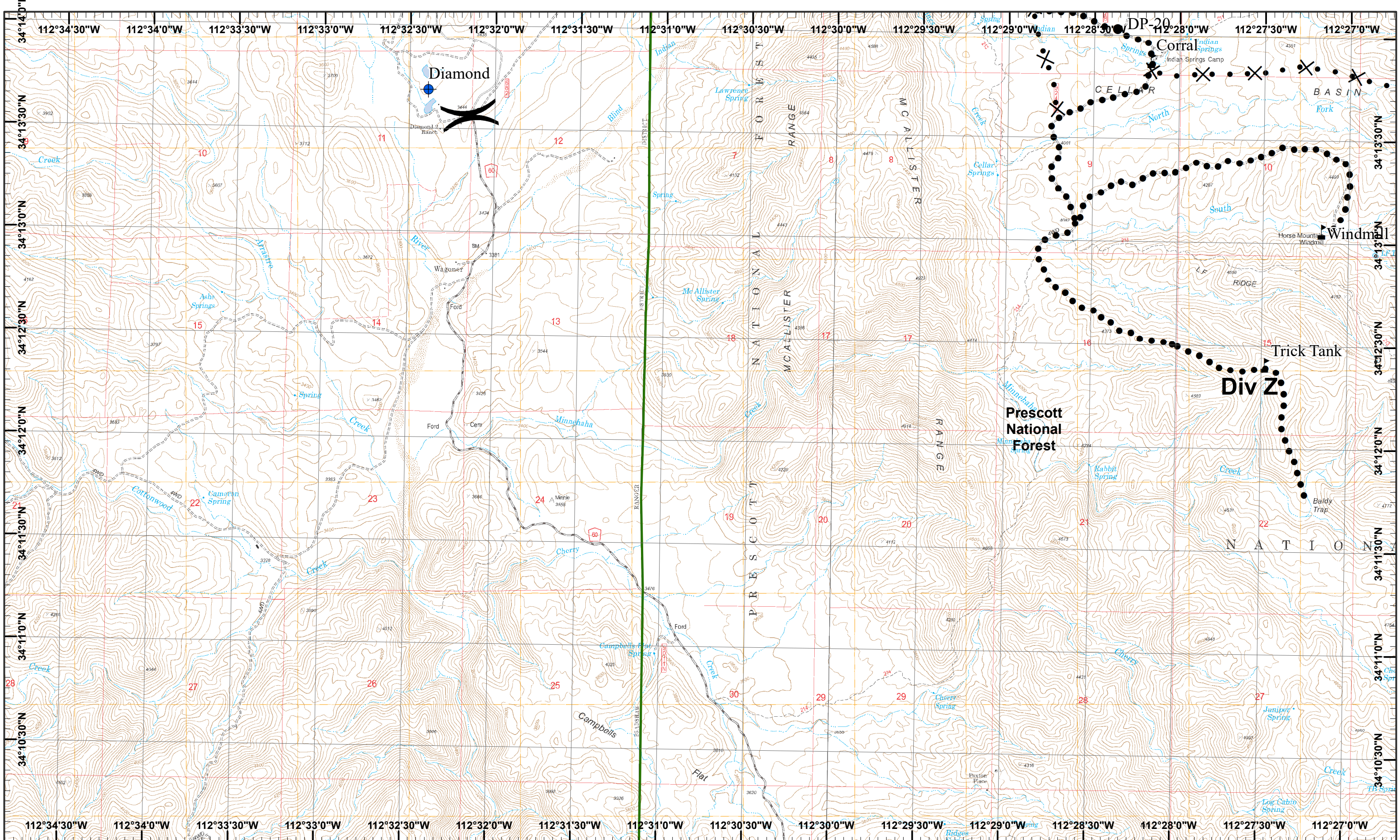
**Div O**

**Prescott National Forest**

**Cellar Incident**  
 GIS Acres 7,410  
 7/18/2019 2100  
 Day Operational Periods 7/20/2019

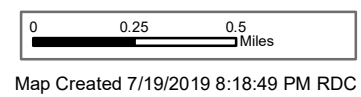


- North
- Hot Spot
- Proposed Dozer Line
- Uncontrolled Fire Edge



**Cellar Incident**  
 Day Operational Periods 7/20/2019

GIS Acres 7,410  
 7/18/2019 2100



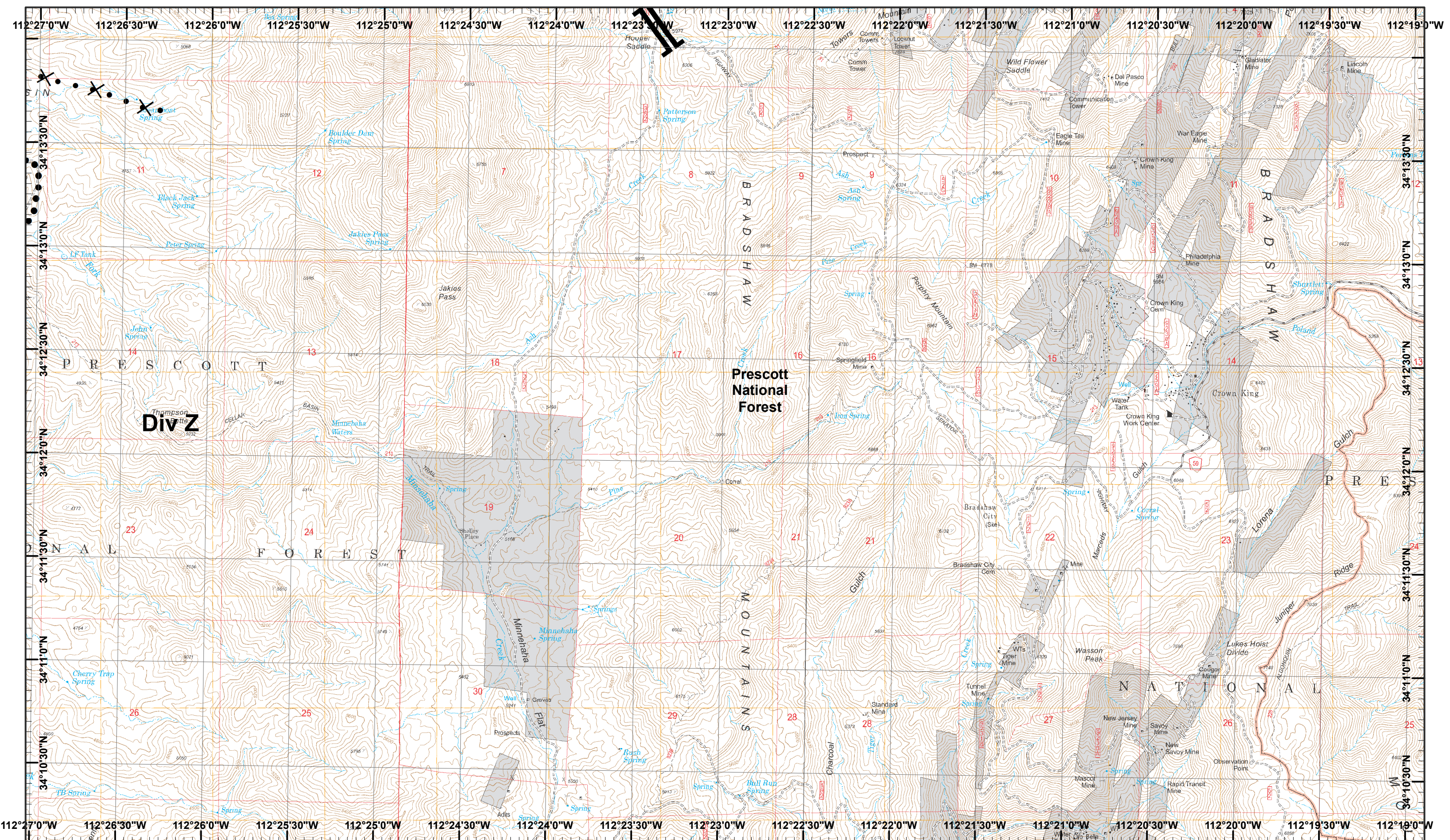
- North
- Value at Risk
- Drop Point
- Planned Secondary Line
- Dip Site
- Proposed Dozer Line

1	2
3	4
5	6
7	8

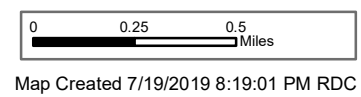
Page 7  
 X Division  
 I Branch







**Cellar Incident**  
 GIS Acres 7,410  
 7/18/2019 2100  
 Day Operational Periods 7/20/2019



Proposed Dozer Line  
 Planned Secondary Line

1	2
3	4
5	6
7	8

Page 8  
 X Division  
 I Branch

