

Cellar Incident Index Map

GIS Acres 7,512
7/21/2019 00:57

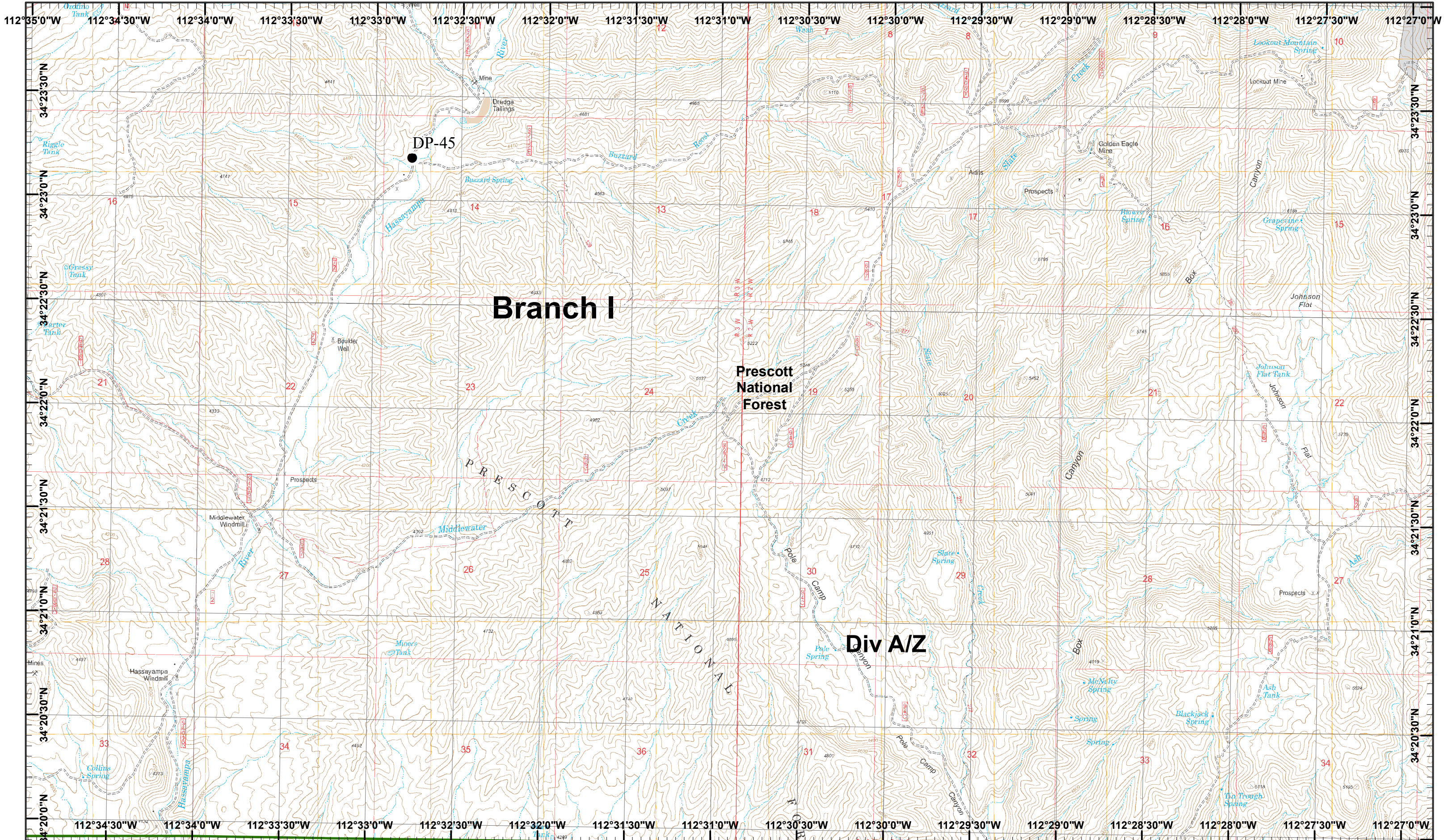
Day Operational Periods 7/22/2019

Map Created 7/21/2019 8:03:15 PM RDC

- | | | | | | |
|--|--|--|--|--|--|
| | | | | | |
| | | | | | |
| | | | | | |
| | | | | | |

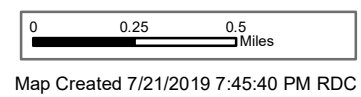


) Division
] Branch



Cellar Incident
 Day Operational Periods 7/22/2019

GIS Acres 7,512
 7/21/2019 00:57



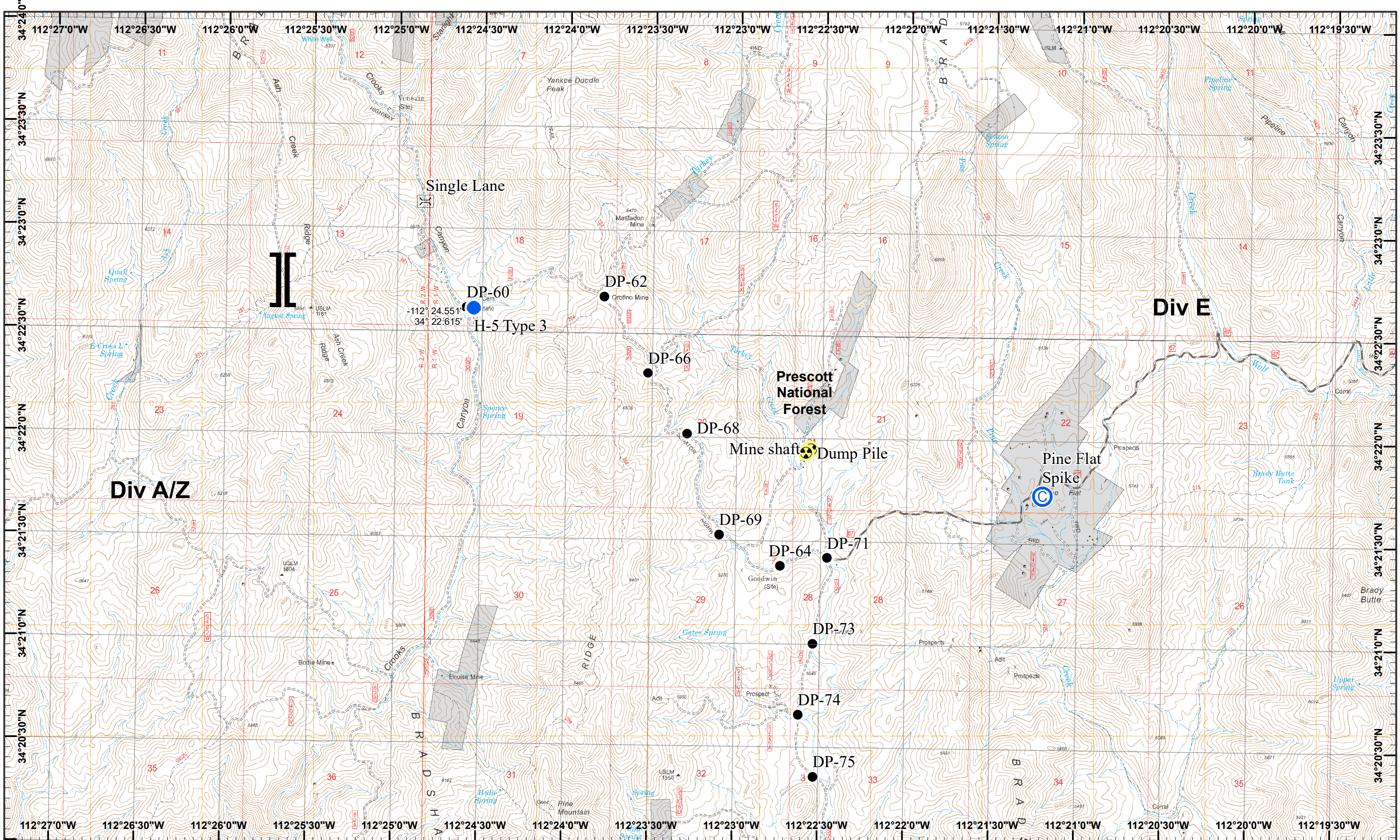
● Drop Point

Map Created 7/21/2019 7:45:40 PM RDC

1	2
3	4
5	6
7	8

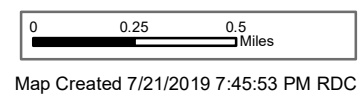
Page 1
 X Division
 I Branch





Cellar Incident
 Day Operational Periods 7/22/2019

GIS Acres 7,512
 7/21/2019 00:57

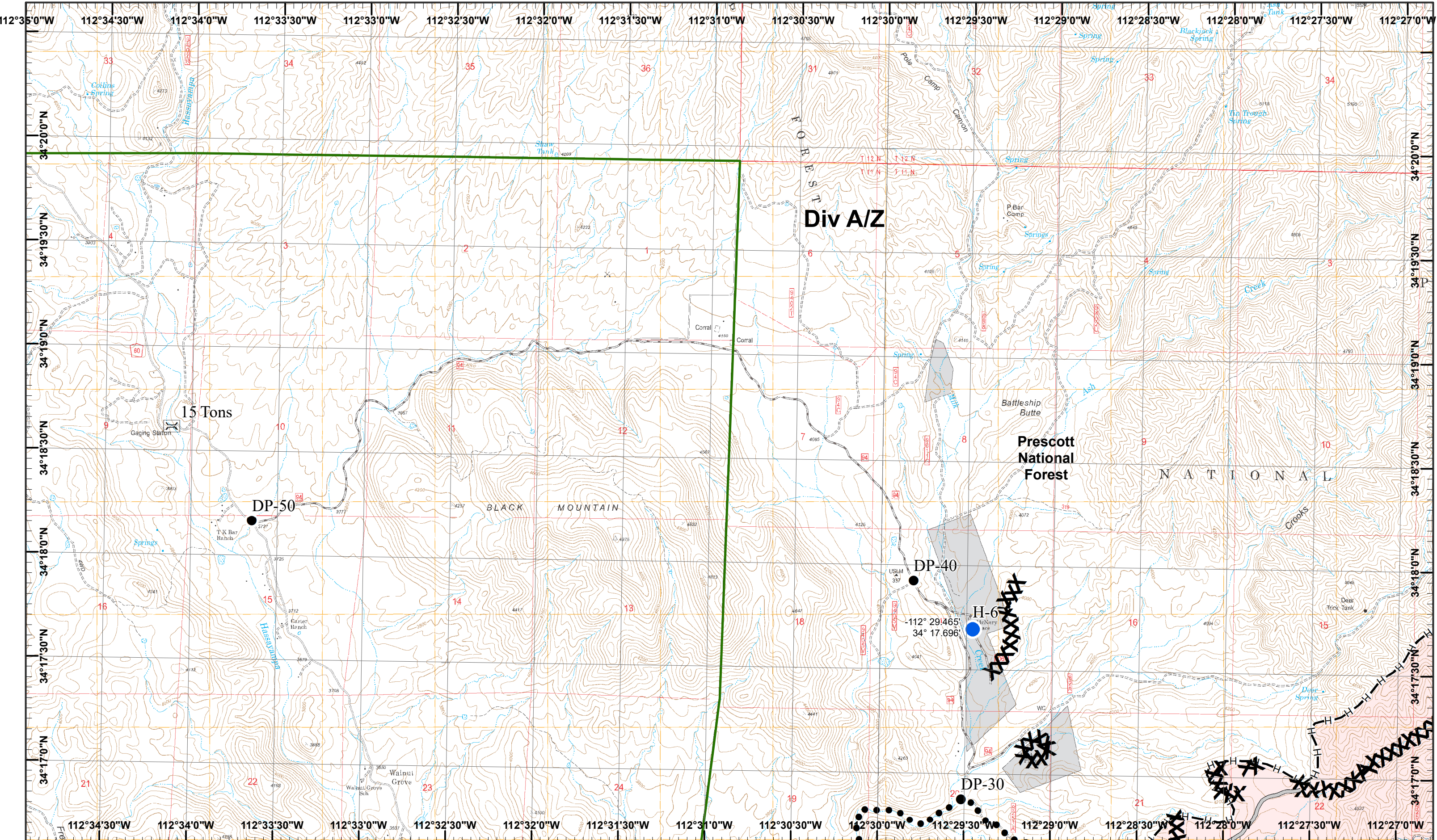


- North
- Bridge
- Camp
- Drop Point
- Hazard
- Helispot

1	2
3	4
5	6
7	8

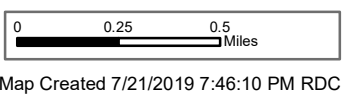
Page 2
 (X) Division
 (I) Branch





Cellar Incident
 Day Operational Periods 7/22/2019

GIS Acres 7,512
 7/21/2019 00:57



Bridge
 Drop Point

Helispot

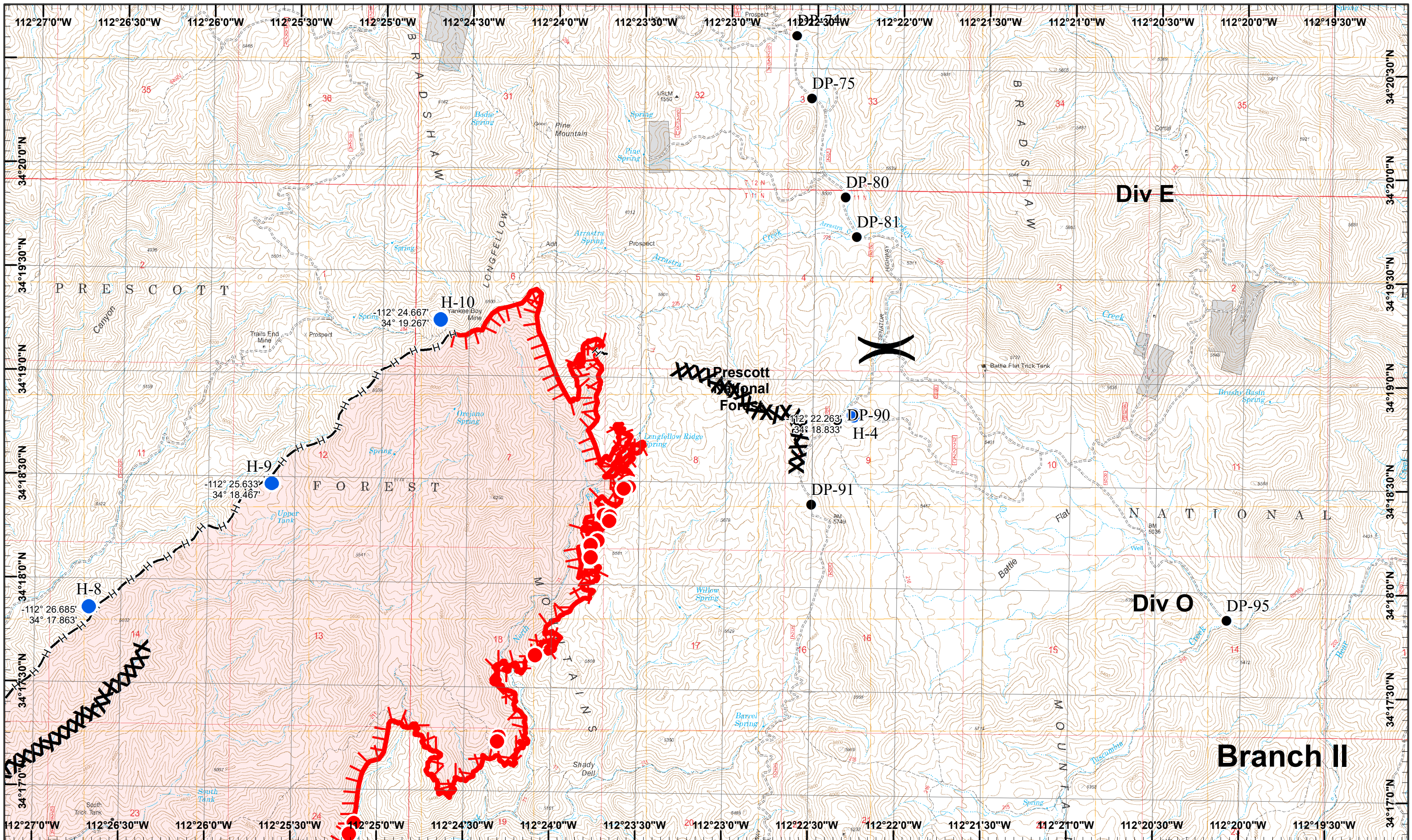
Completed Dozer Line
 Completed Hand Line

Planned Secondary Line

1	2
3	4
5	6
7	8

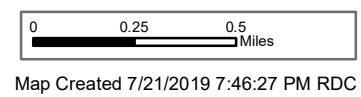
Page 3
 Division
 Branch





Cellar Incident
 Day Operational Periods 7/22/2019

GIS Acres 7,512
 7/21/2019 00:57

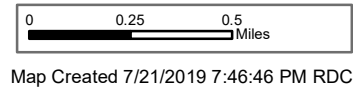
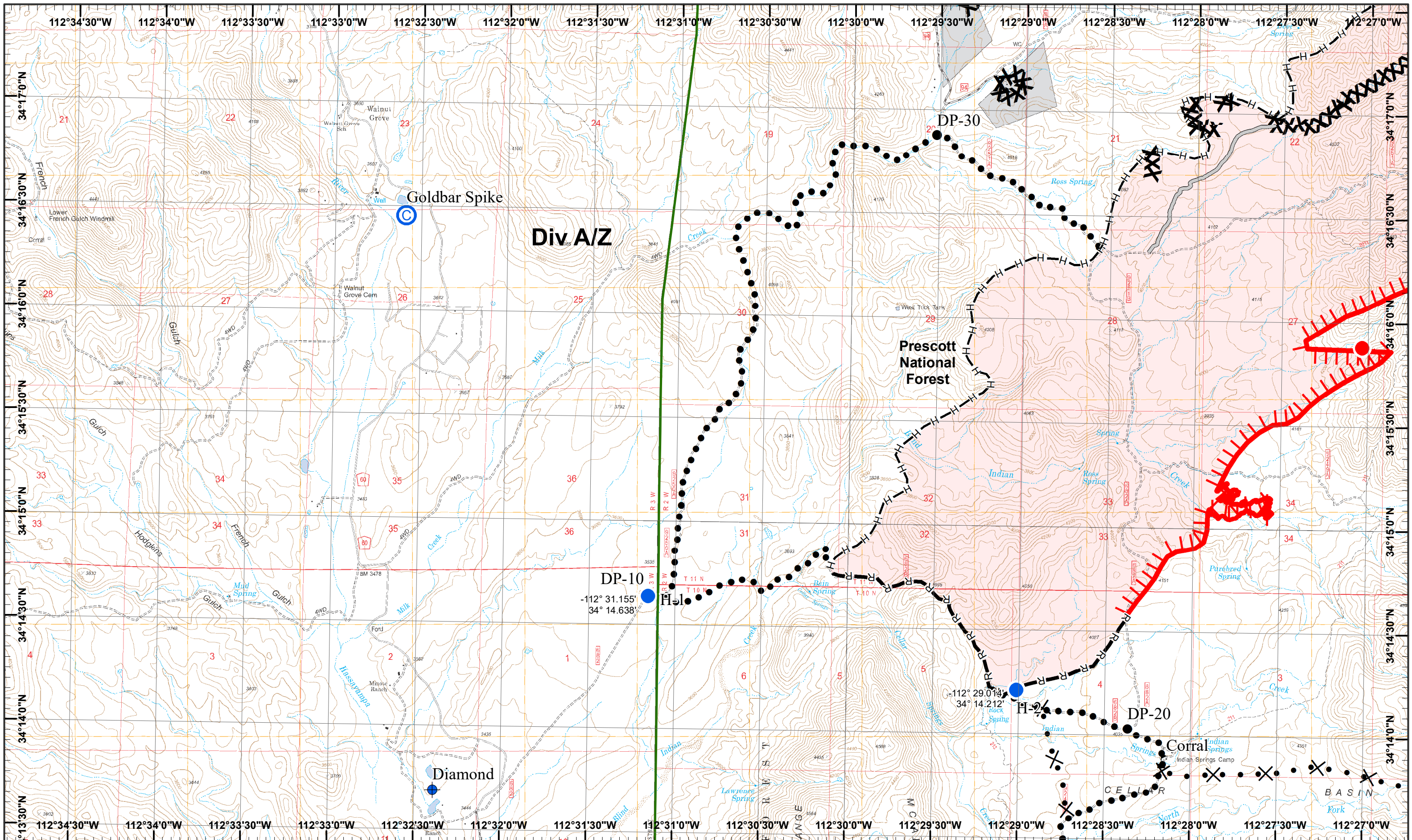


- Drop Point
- Hot Spot
- Completed Dozer Line
- Uncontrolled Fire Edge
- Helispot
- Completed Hand Line

1	2
3	4
5	6
7	8

Page 4
 X Division
 I Branch





Div A/Z

Prescott National Forest

DP-10
 -112° 31.155'
 34° 14.638'

DP-20
 -112° 29.014'
 34° 14.212'

DP-30

Goldbar Spike

Diamond

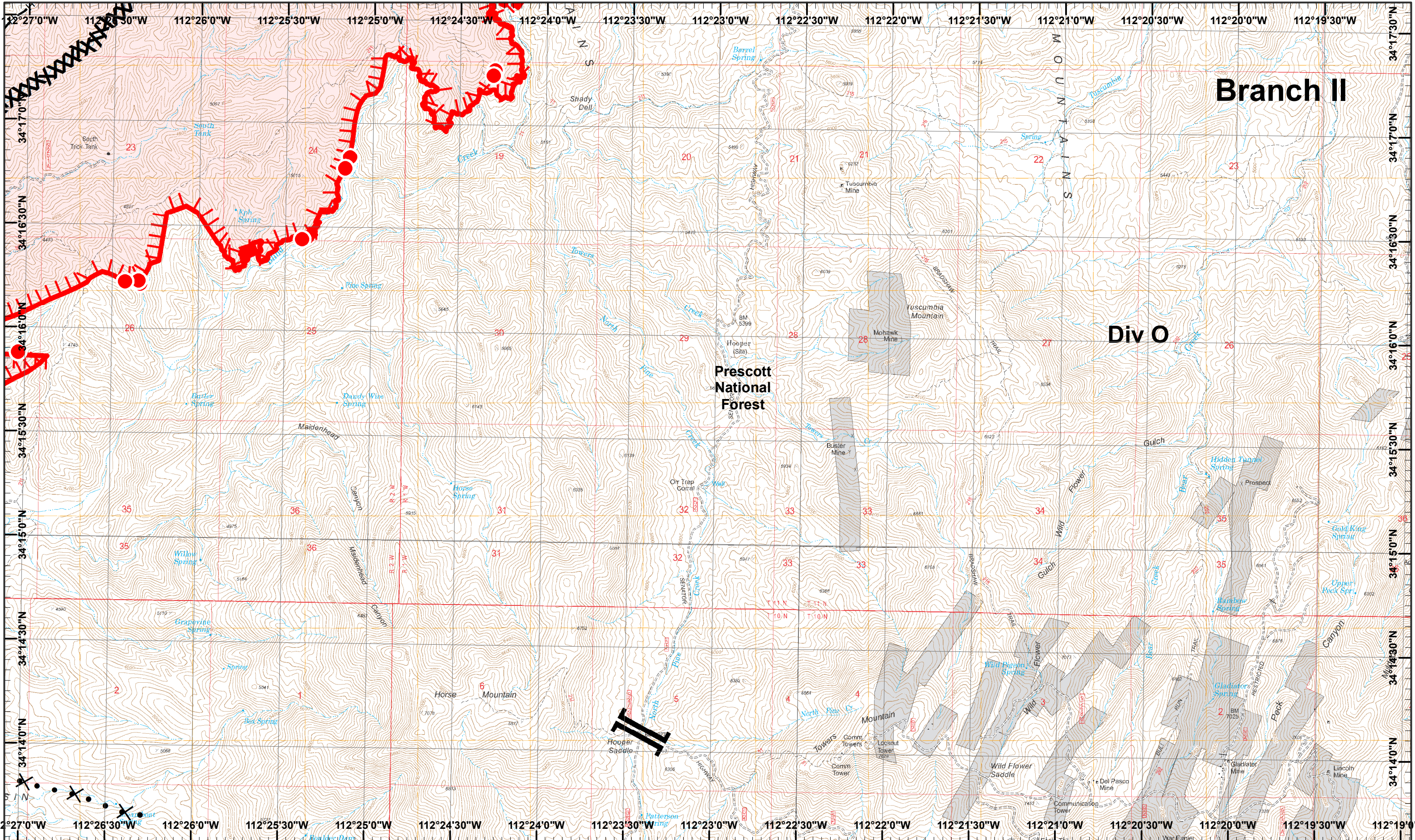
Corral

CELLAR

BASIN

1	2
3	4
5	6
7	8



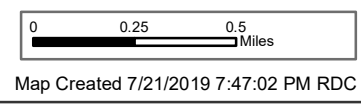


Branch II

Div O

Prescott National Forest

Cellar Incident
 GIS Acres 7,512
 7/21/2019 00:57
 Day Operational Periods 7/22/2019

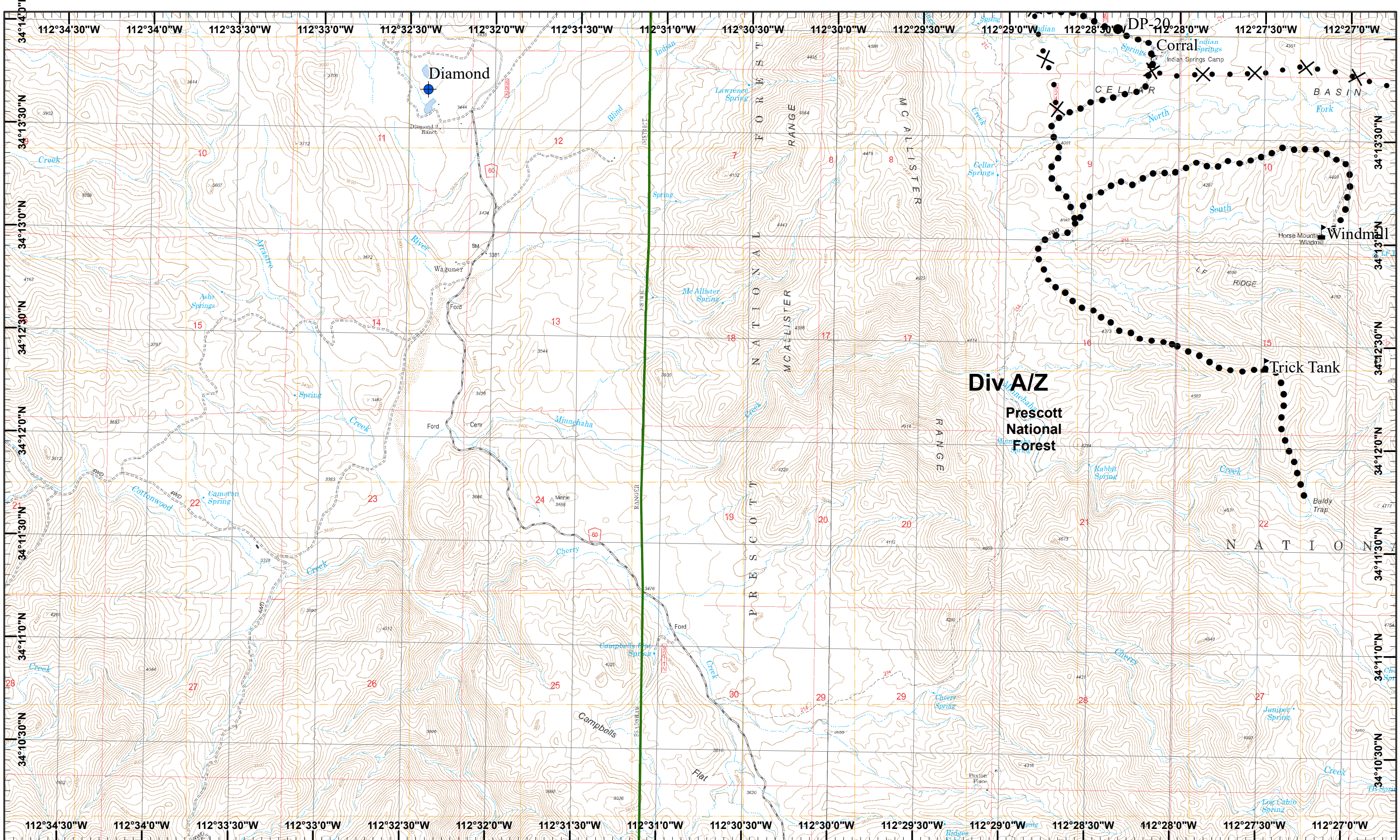


- North
- Hot Spot
- XXX Completed Dozer Line
- Proposed Dozer Line
- H Completed Hand Line
- Uncontrolled Fire Edge

1	2
3	4
5	6
7	8

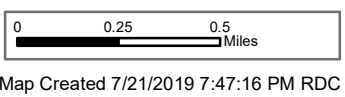
Page 6
 X Division
 II Branch





Cellar Incident
 Day Operational Periods 7/22/2019

GIS Acres 7,512
 7/21/2019 00:57

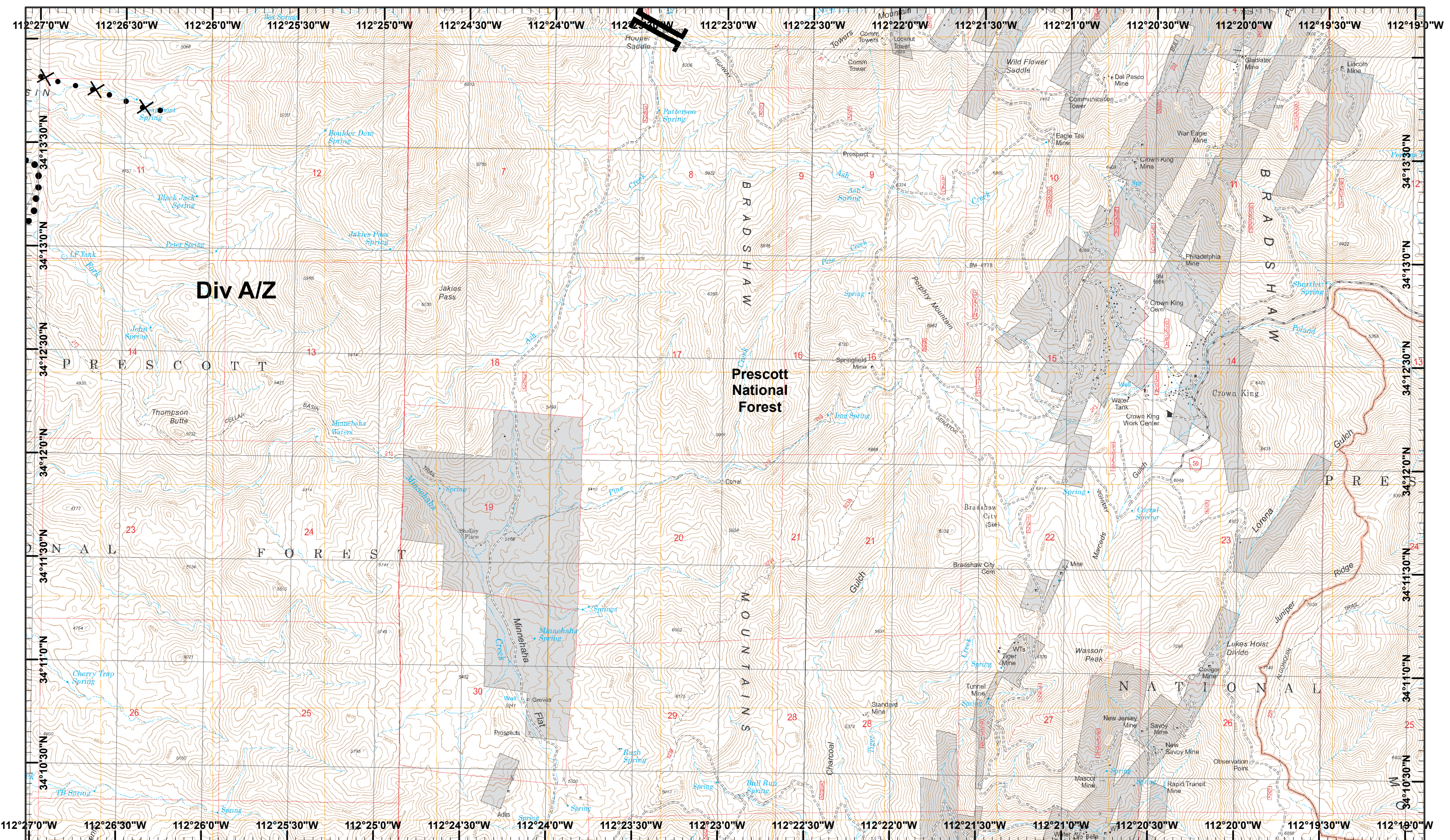


- Value at Risk
- Drop Point
- Planned Secondary Line
- Dip Site
- Proposed Dozer Line

1	2
3	4
5	6
7	8

Page 7
 X Division
 I Branch

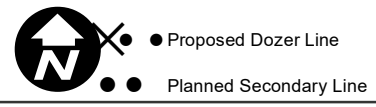
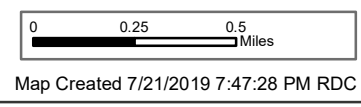




Div A/Z

Prescott National Forest

Cellar Incident
 GIS Acres 7,512
 7/21/2019 00:57
 Day Operational Periods 7/22/2019



1	2
3	4
5	6
7	8

Page 8
 X Division
 I Branch

