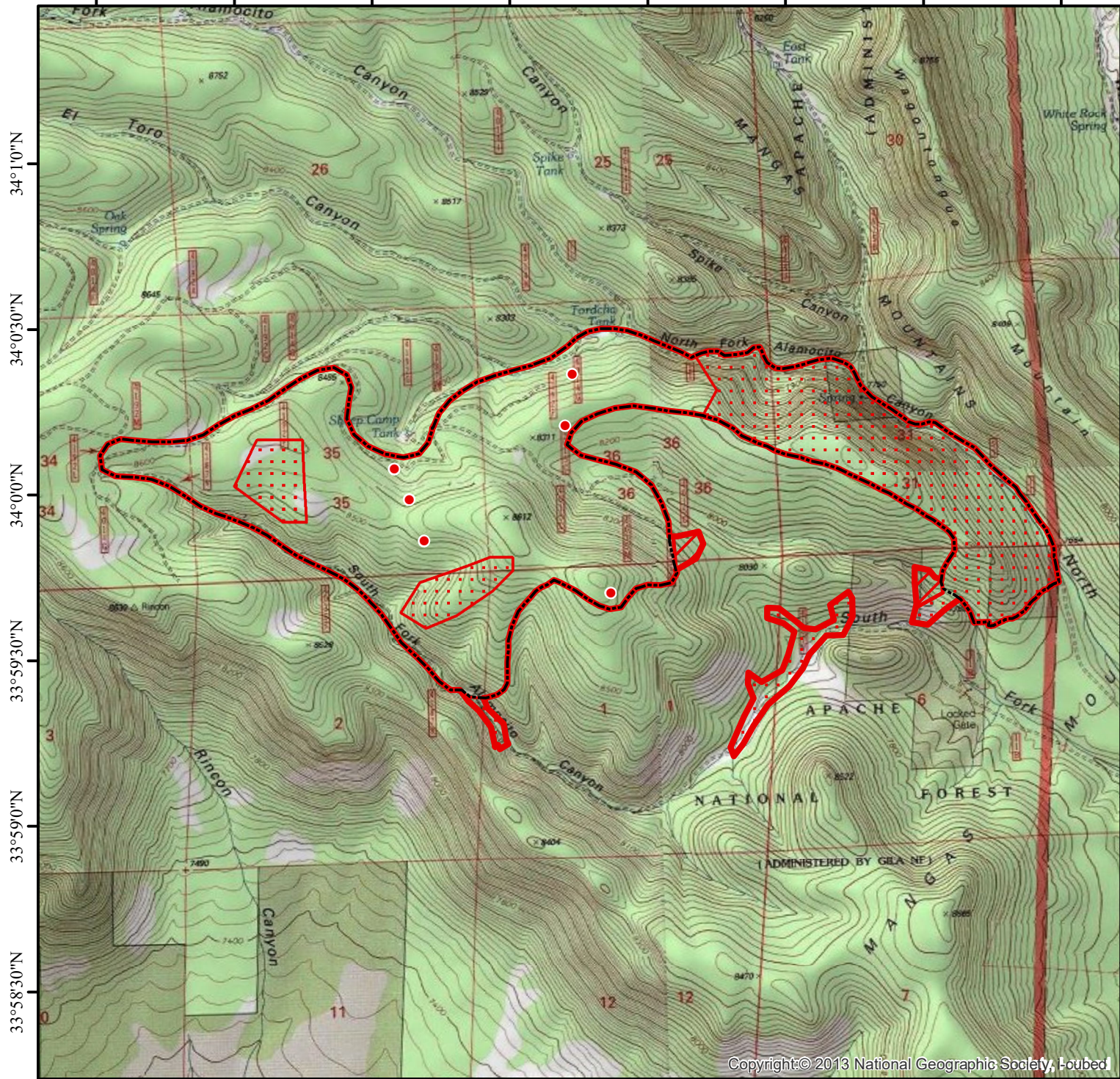


108°17'0"W 108°16'30"W 108°16'0"W 108°15'30"W 108°15'0"W 108°14'30"W 108°14'0"W 108°13'30"W

INFRARED MAP  
Elk  
NM-GNF-000178  
Interpreted (IR) Acres: 1,105  
June 14, 2019 @ 0050 MDT



- Isolated Heat
- ⬭ GIS Perimeter (6/12/2019)
- ⬭ Heat Perimeter
- ⬭ Intense Heat
- ⬭ Scattered Heat

0 0.2 0.4 0.8 Miles



108°17'0"W 108°16'30"W 108°16'0"W 108°15'30"W 108°15'0"W 108°14'30"W 108°14'0"W 108°13'30"W

Copyright © 2013 National Geographic Society, Loube

IRIN: Cheron Ferland  
Taos, NM  
Nad 83 UTM Zone 12