

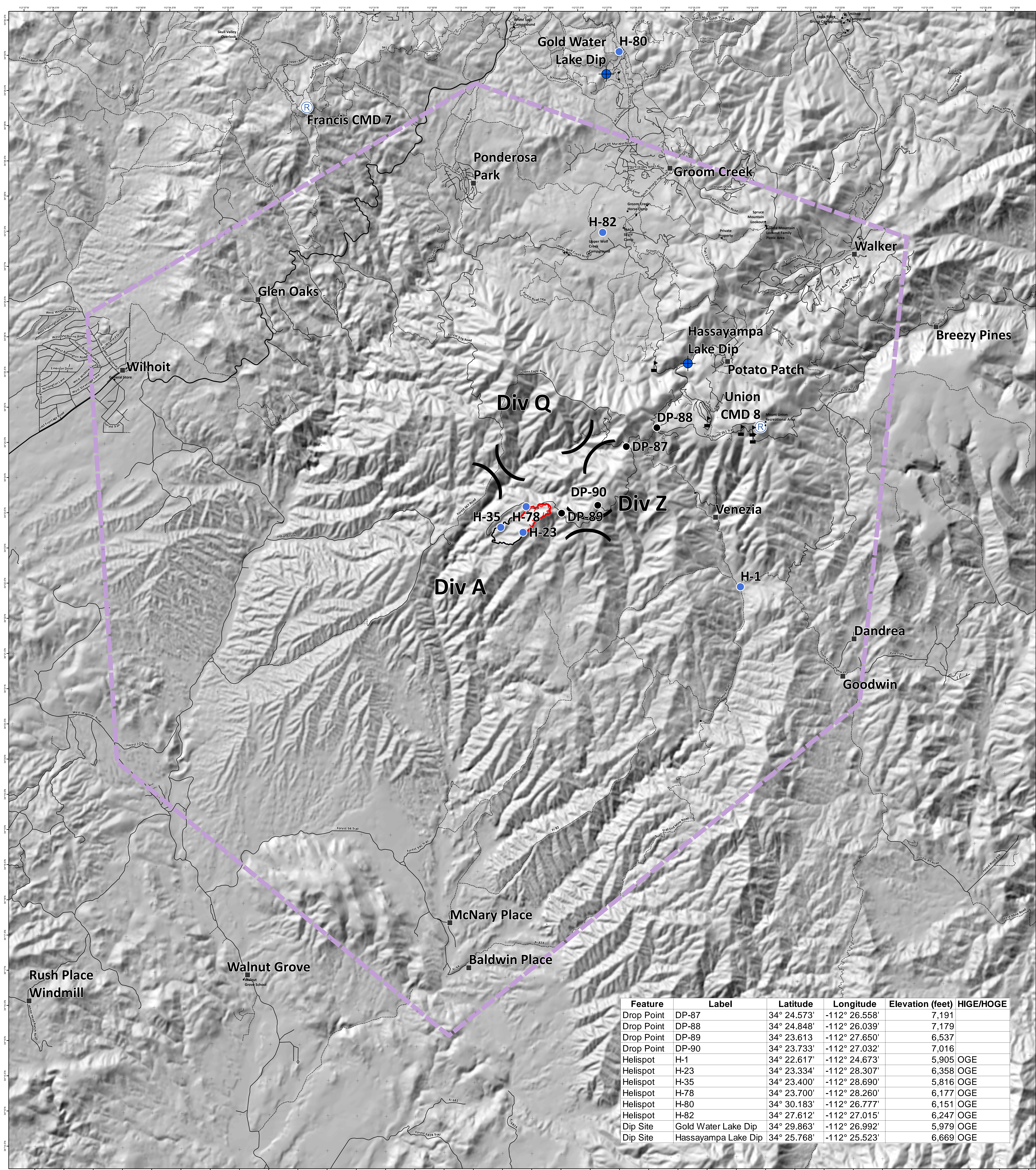
Johnson Fire

AZ-PNF-001556

Air Ops Map

09/26/2019

Fire perimeter as of
09/25/2019 at 1200
Approx. 166 acres



Feature	Label	Latitude	Longitude	Elevation (feet)	HIGE/HOGE
Drop Point	DP-87	34° 24.573'	-112° 26.558'	7,191	
Drop Point	DP-88	34° 24.848'	-112° 26.039'	7,179	
Drop Point	DP-89	34° 23.613'	-112° 27.650'	6,537	
Drop Point	DP-90	34° 23.733'	-112° 27.032'	7,016	
Helispot	H-1	34° 22.617'	-112° 24.673'	5,905	OGE
Helispot	H-23	34° 23.334'	-112° 28.307'	6,358	OGE
Helispot	H-35	34° 23.400'	-112° 28.690'	5,816	OGE
Helispot	H-78	34° 23.700'	-112° 28.260'	6,177	OGE
Helispot	H-80	34° 30.183'	-112° 26.777'	6,151	OGE
Helispot	H-82	34° 27.612'	-112° 27.015'	6,247	OGE
Dip Site	Gold Water Lake Dip	34° 29.863'	-112° 26.992'	5,979	OGE
Dip Site	Hassayampa Lake Dip	34° 25.768'	-112° 25.523'	6,669	OGE



- Legend**
- Dip Site
 - Drop Point
 - Helispot
 - Repeater
 - Value at Risk
 - Uncontrolled Fire Edge
 - Temporary Flight Restriction
 - Primary road
 - Completed Line
 - Unpaved or unknown road type
 - Secondary road
 - Division Break

1:30,000

NORTH

0 1/2 1 2
Miles