

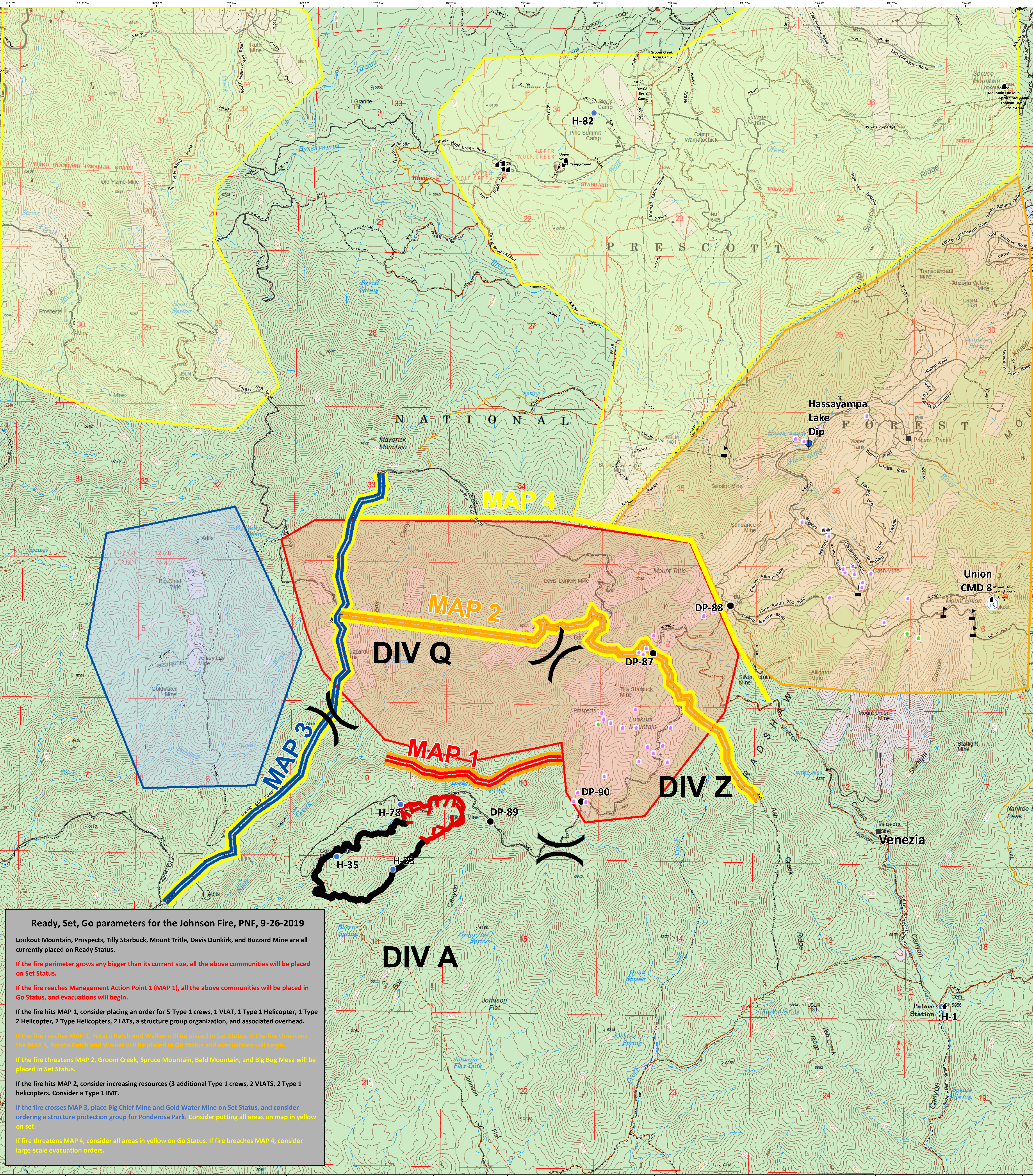
Johnson Fire

AZ-PNF-001556

Ready Set Go Structure Management Action Plan Map

09/26/2019

Fire perimeter as of 09/25/2019 at 1200
Approx. 166 acres



Ready, Set, Go parameters for the Johnson Fire, PNF, 9-26-2019

Lookout Mountain, Prospects, Tilly Starbuck, Mount Trittle, Davis Dunkirk, and Buzzard Mine are all currently placed on Ready Status.

If the fire perimeter grows any bigger than its current size, all the above communities will be placed on Set Status.

If the fire reaches Management Action Point 1 (MAP 1), all the above communities will be placed in Go Status, and evacuations will begin.

If the fire hits MAP 1, consider placing an order for 5 Type 1 crews, 1 VLAT, 1 Type 1 Helicopter, 1 Type 2 Helicopter, 2 Type Helicopters, 2 LATs, a structure group organization, and associated overhead.

If the fire reaches MAP 1, Potato Patch and Walker will be placed in Set Status. If the fire threatens the MAP 2, Potato Patch and Walker will be placed in Go Status and evacuations will begin.

If the fire threatens MAP 2, Groom Creek, Spruce Mountain, Bald Mountain, and Big Rag Mine will be placed in Set Status.

If the fire hits MAP 2, consider increasing resources (3 additional Type 1 crews, 2 VLATs, 2 Type 1 helicopters. Consider a Type 1 IMT).

If the fire crosses MAP 3, place Big Chief Mine and Gold Water Mine on Set Status, and consider ordering a structure protection group for Ponderosa Park. Consider putting all areas on map in yellow on set.

If fire threatens MAP 4, consider all areas in yellow on Go Status. If fire breaches MAP 4, consider large-scale evacuation orders.



Legend

- | | | | | | | |
|--|--|---|--|--|--|---|
| <ul style="list-style-type: none"> Management Action Points MAP 1 MAP 2 MAP 3 MAP 4 | <ul style="list-style-type: none"> Ready Set Go Zones Red Orange Yellow Green Dip Site | <ul style="list-style-type: none"> Drop Point Helispot Repeater Value at Risk | <ul style="list-style-type: none"> Division Break | <ul style="list-style-type: none"> Structures Identified by Incident Survey Defensible - Stand Alone Defensible - Prep and Hold Non-Defensible - Prep and Leave USFS Structures Uncontrolled Fire Edge | <ul style="list-style-type: none"> Completed Line Roads Primary Secondary Service | <ul style="list-style-type: none"> Track Footpath Road (unknown class) |
|--|--|---|--|--|--|---|

1:12,000

