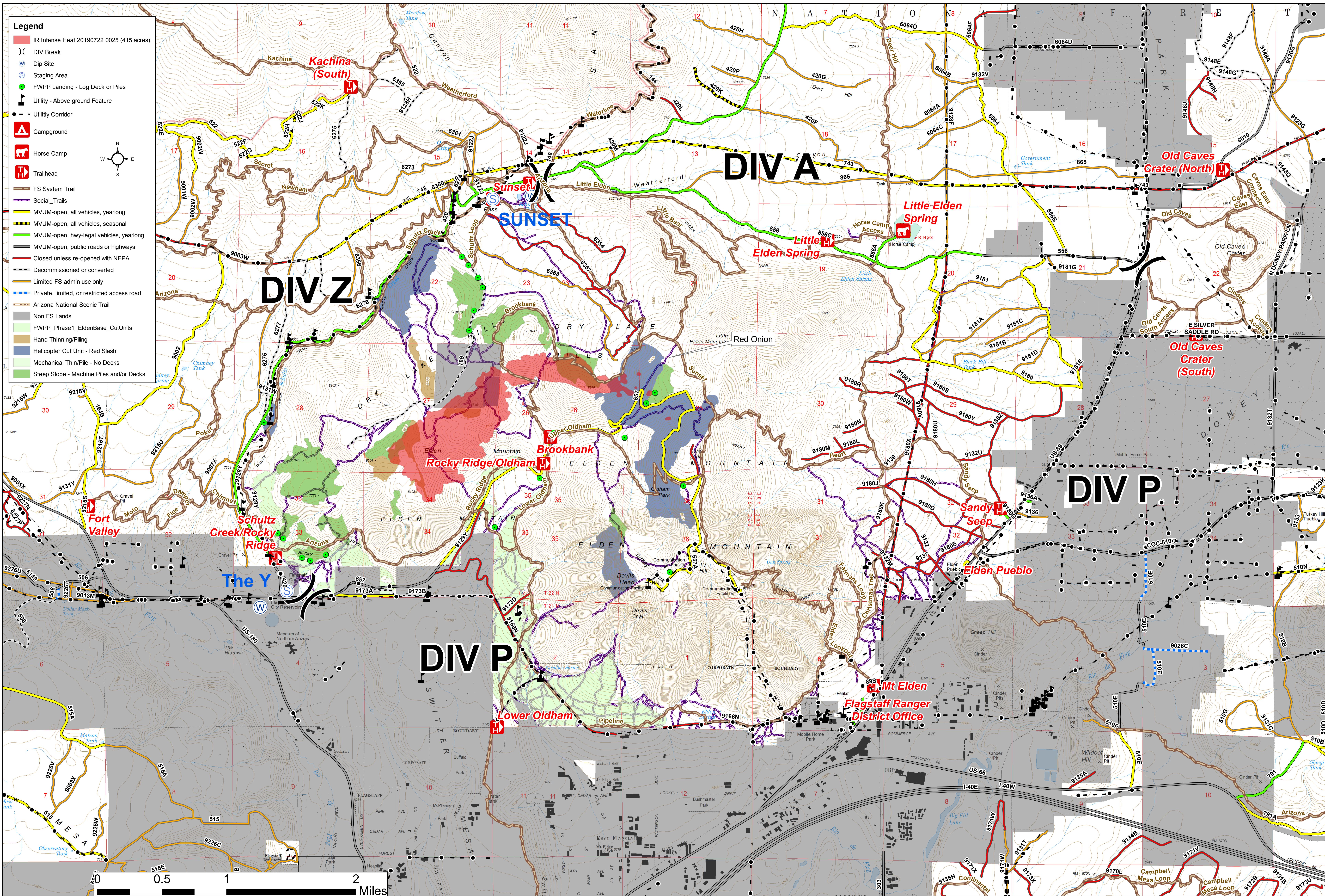


Coconino National Forest

Flagstaff Ranger District
Museum Ops Map - 7/22/2019



- Legend**
- IR Intense Heat 20190722 0025 (415 acres)
 - DIV Break
 - Dip Site
 - Staging Area
 - FWPP Landing - Log Deck or Piles
 - Utility - Above ground Feature
 - Utility Corridor
 - Campground
 - Horse Camp
 - Trailhead
 - FS System Trail
 - Social Trails
 - MVUM-open, all vehicles, yearlong
 - MVUM-open, all vehicles, seasonal
 - MVUM-open, hwy-legal vehicles, yearlong
 - MVUM-open, public roads or highways
 - Closed unless re-opened with NEPA
 - Decommissioned or converted
 - Limited FS admin use only
 - Private, limited, or restricted access road
 - Arizona National Scenic Trail
 - Non FS Lands
 - FWPP_Phase1_EldenBase_CutUnits
 - Hand Thinning/Piling
 - Helicopter Cut Unit - Red Slash
 - Mechanical Thin/Pile - No Decks
 - Steep Slope - Machine Piles and/or Decks

0 0.5 1 2 Miles