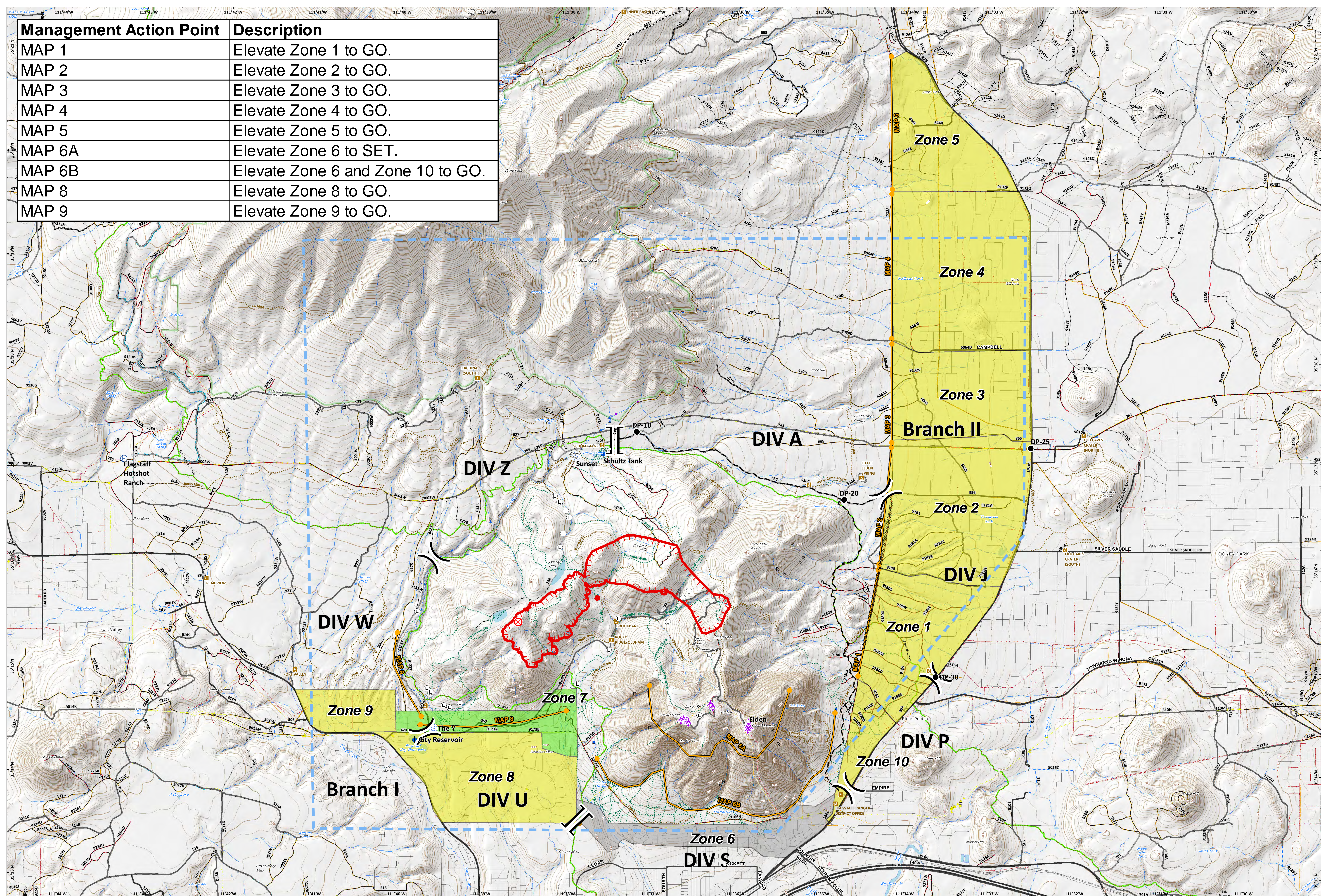


Management Action Point	Description
MAP 1	Elevate Zone 1 to GO.
MAP 2	Elevate Zone 2 to GO.
MAP 3	Elevate Zone 3 to GO.
MAP 4	Elevate Zone 4 to GO.
MAP 5	Elevate Zone 5 to GO.
MAP 6A	Elevate Zone 6 to SET.
MAP 6B	Elevate Zone 6 and Zone 10 to GO.
MAP 8	Elevate Zone 8 to GO.
MAP 9	Elevate Zone 9 to GO.



Museum
 AZ-COF-000788
 7/23/2019 Day
Evacuations

Flagstaff Ranger District Office	Landing or Log Deck	Division Break	Uncontrolled Fire Edge	Ready	Closed unless re-opened with NEPA	Unknown	Reclaimed water line (snow-making), FS land only
Aerial Hazard	Lookout	Branch Break	Completed Dozer Line	Trail	Decommissioned or converted	Water facility	Utility corridor
Dip Site	Resource Location	Planned Fire Line	Temporary Flight Restriction	MVUM-open, all vehicles, yearlong	Limited FS admin use only	Water line fixture	Water line
Drop Point	Staging Area	Management Action Point	MVUM-open, all vehicles, seasonal	Private, limited, or restricted access road	Arizona National Scenic Trail	Water well	Wilderness
Fire Origin	Campground	Evacuation Type	MVUM-open, heavy-legal vehicles, yearlong	Buried fiber optic cable; Buried telephone line	Gas pipeline facility	Overhead power line	Social Trail
Helibase	Trailhead	Go	MVUM-open, heavy-legal vehicles, seasonal	Gas pipeline	Overhead telephone line		
	Picnic Area	Set	MVUM-open, public roads or highways	MVUM-open, vehicles <62 inches wide, seasonal	Qwest equipment		

Approx 771 acres
 7/22/2019 1030 hrs

0 0.5 1
 Miles
 0 0.5 1
 Kilometers

INCIDENT MANAGEMENT TEAM

NAD 1983 UTM Zone 12N
 Prepared by KGAZ
 7/23/2019 09:41 hrs