

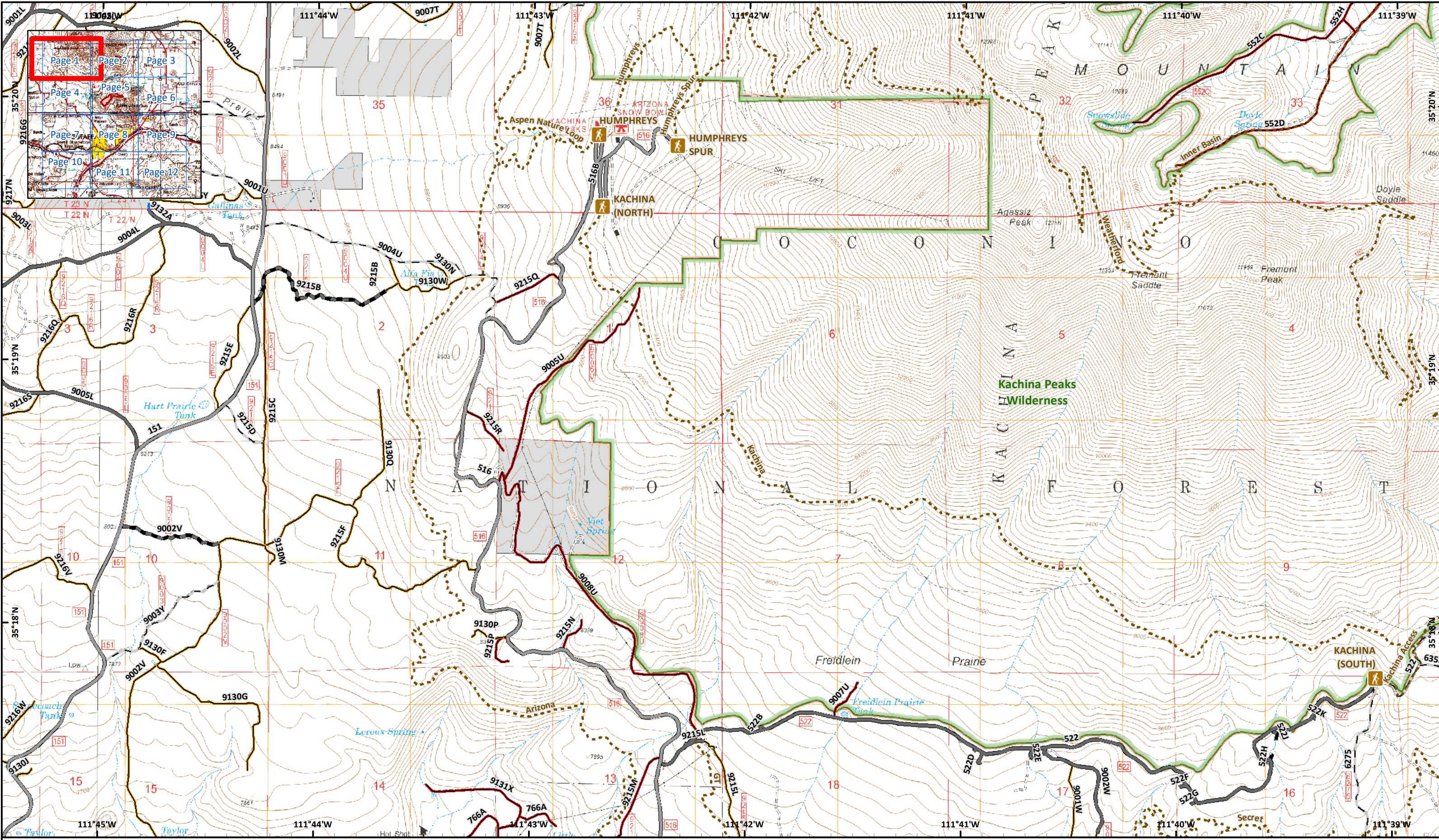
Museum
 AZ-COF-000788
 7/23/2019 Day
Incident Action Plan

- Grid Index
- Dip Site
- Fire Origin
- Incident Command Post
- Lookout
- Drop Point
- Helibase
- Landing or Log Deck
- Staging Area
- Division Break
- Branch Break
- Uncontrolled Fire Edge
- Completed Dozer Line
- Planned Fire Line
- Wildfire Daily Fire Perimeter

Approx 771 acres
 7/22/2019 1030 hrs

0 1 2 Miles
 0 1 2 Kilometers

NAD 1983 UTM Zone 12N
 Prepared by: KG&G
 7/22/2019 2332 hrs



Museum
 AZ-COF-000788
 7/23/2019 Day
Incident Action Plan

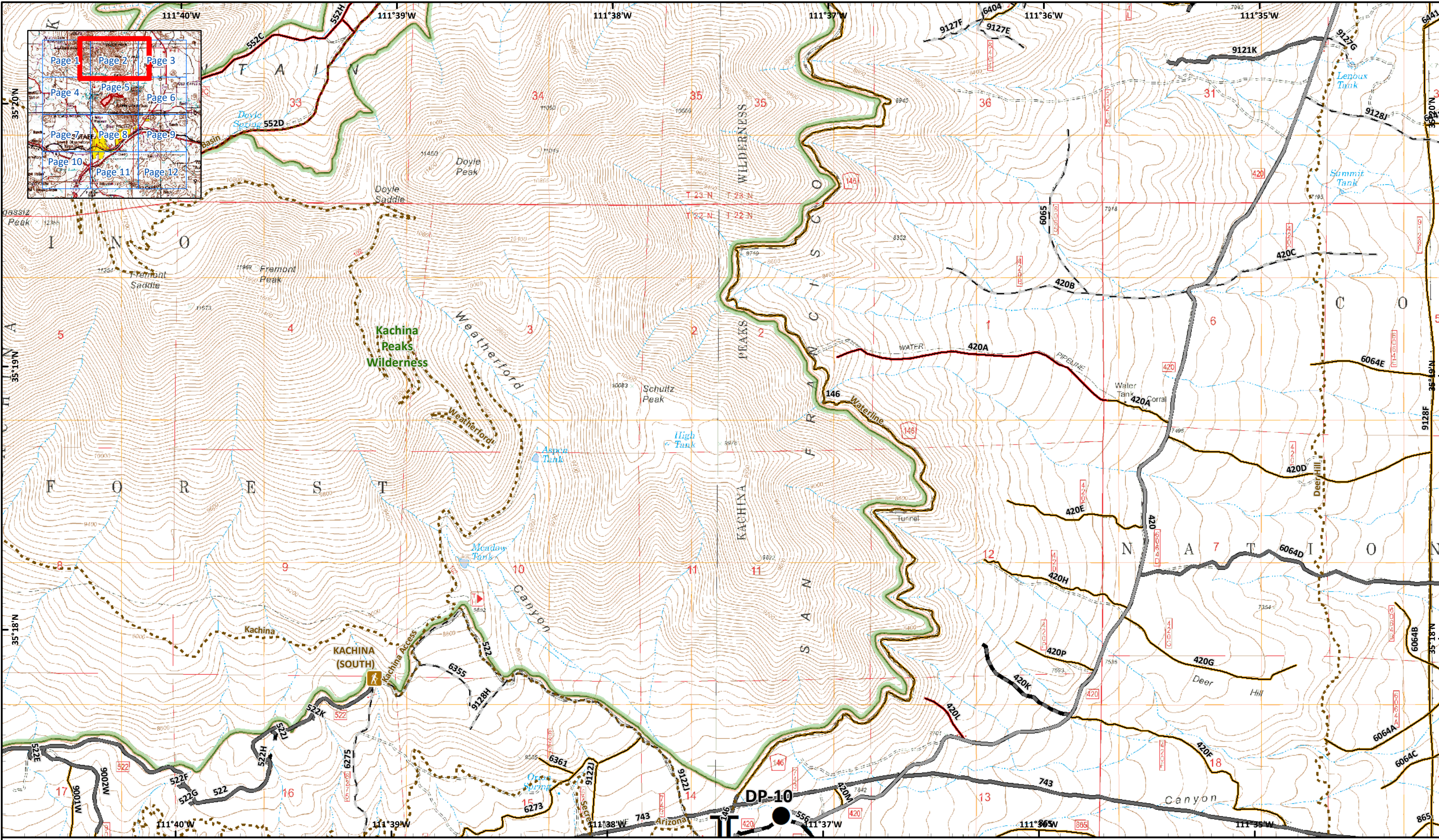
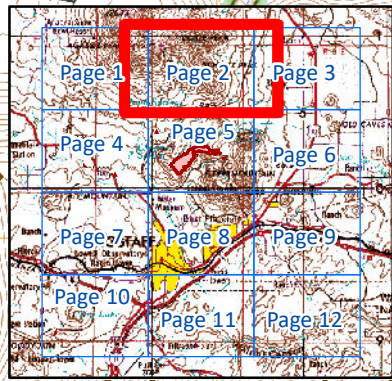
- Page: 1
- Trailhead
 - Trail
 - MVUM-open, all vehicles, yearlong
 - MVUM-open, all vehicles, seasonal
 - MVUM-open, hwy-legal vehicles, yearlong
 - Closed unless re-opened with NEPA
 - Decommissioned or converted
 - Limited FS admin use only
 - Private, limited, or restricted access road
 - Wilderness

Approx 771 acres
 7/22/2019 1030 hrs

0 0.25 0.5 Miles

0 0.25 0.5 Kilometers

NAD 1983 UTM Zone 12N
 Prepared by: KGaiz
 7/22/2019 2253 hrs



Museum
 AZ-COF-000788
 7/23/2019 Day
Incident Action Plan

Page: 2

- Drop Point
- ┌┐ Branch Break
- Trailhead
- Planned Fire Line
- Trail
- MVUM-open, all vehicles, yearlong
- MVUM-open, all vehicles, seasonal
- MVUM-open, hwy-legal vehicles, yearlong
- Closed unless re-opened with NEPA
- Decommissioned or converted
- Limited FS admin use only
- Wilderness

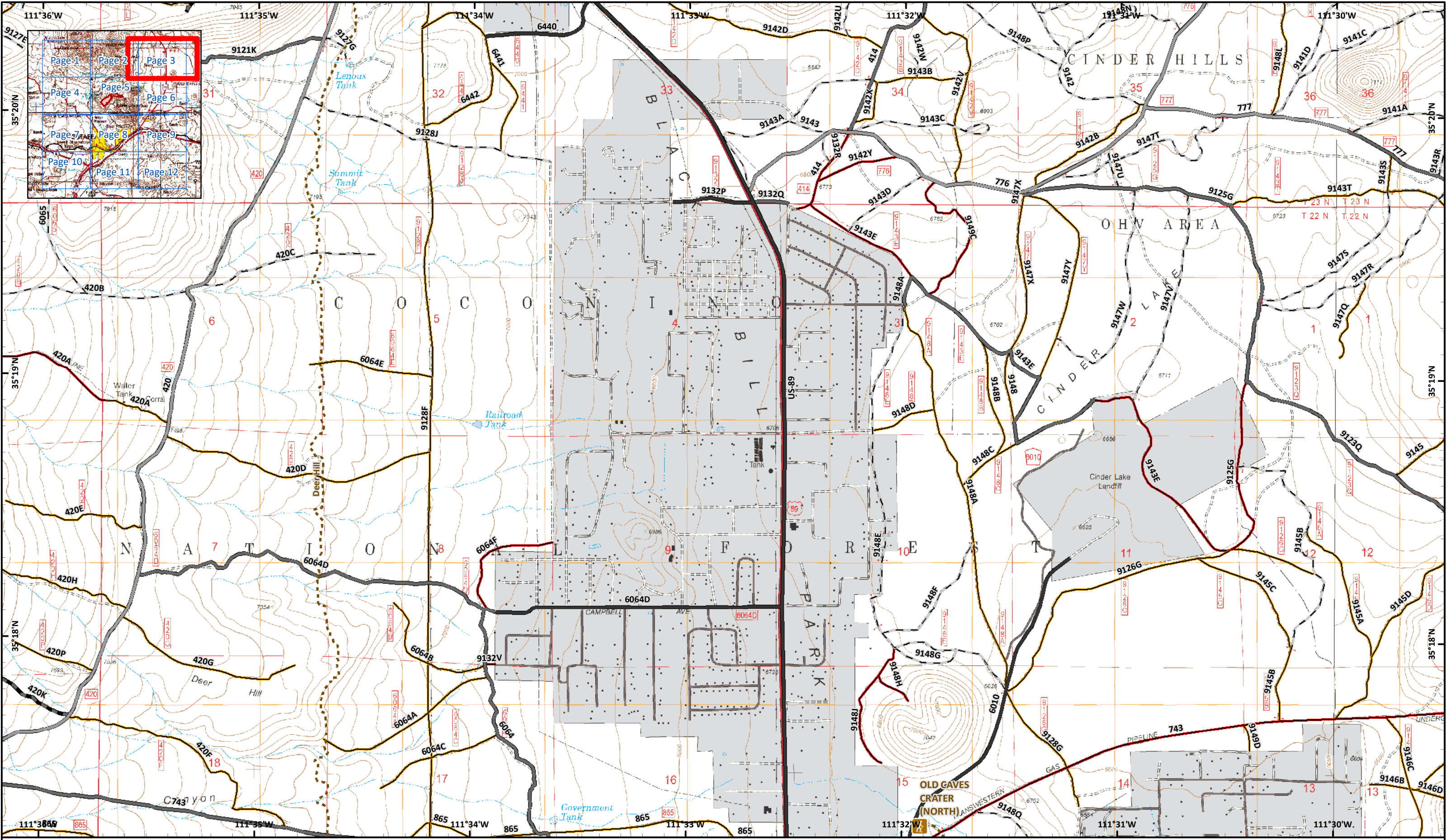
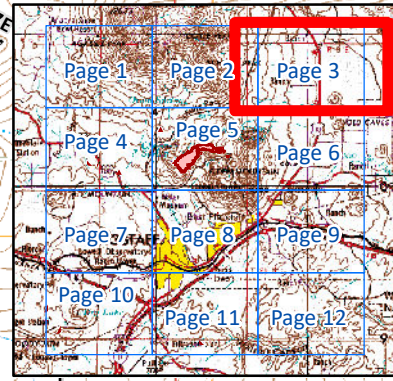
Approx 771 acres
 7/22/2019 1030 hrs

0 0.25 0.5 Miles

0 0.25 0.5 Kilometers

SOUTHWEST AREA
 INCIDENT MANAGEMENT TEAM

NAD 1983 UTM Zone 12N
 Prepared by: KGaia
 7/22/2019 2253 hrs



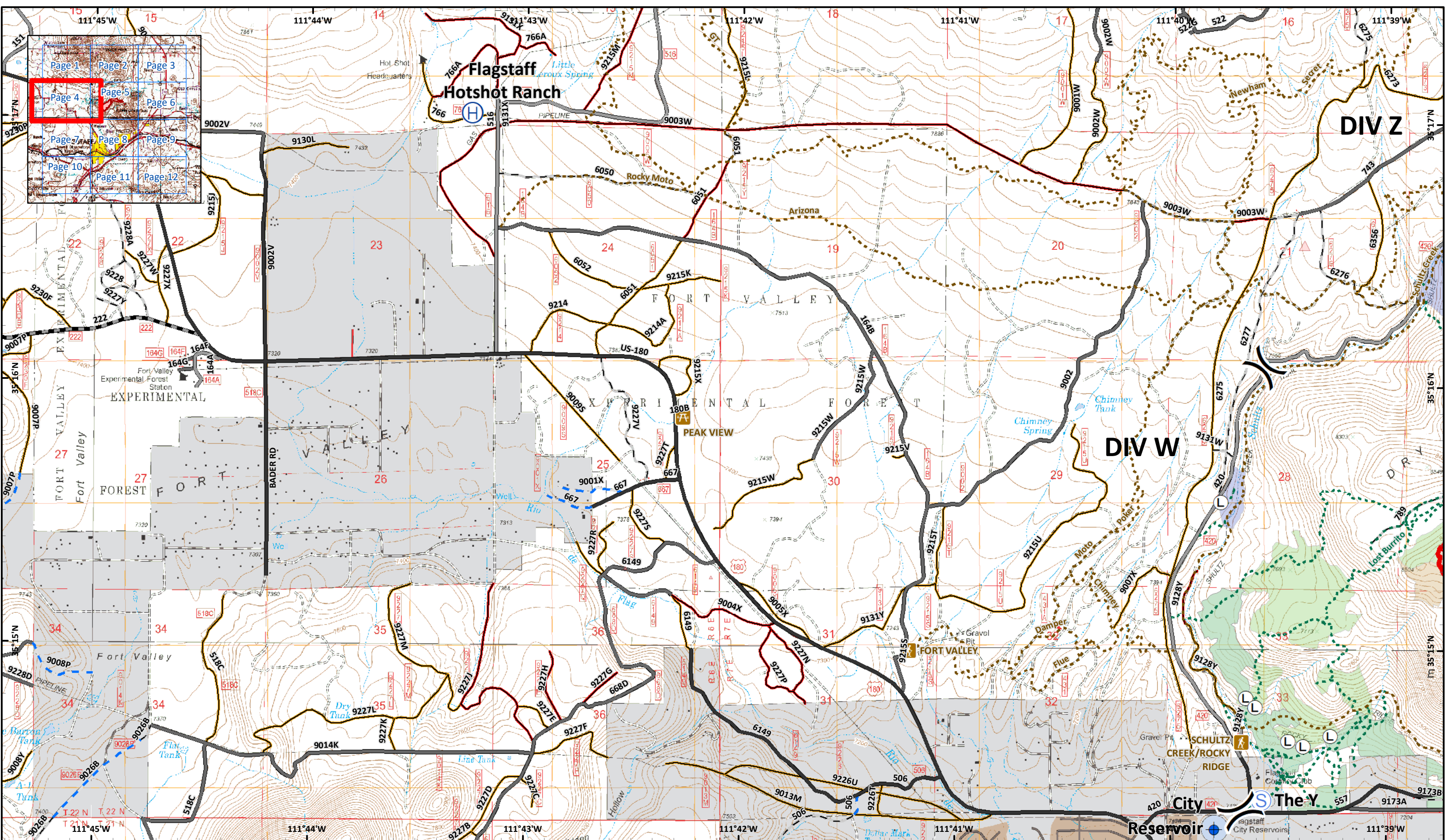
Museum
 AZ-COF-000788
 7/23/2019 Day
Incident Action Plan

- Page: 3
- Trailhead
 - Trail
 - MVUM-open, all vehicles, yearlong
 - MVUM-open, all vehicles, seasonal
 - MVUM-open, hwy-legal vehicles, yearlong
 - MVUM-open, public roads or highways
 - Closed unless re-opened with NEPA
 - Decommissioned or converted
 - Limited FS admin use only

Approx 771 acres
 7/22/2019 1030 hrs

0 0.25 0.5 Miles
 0 0.25 0.5 Kilometers

NAD 1983 UTM Zone 12N
 Prepared by: KGaiz
 7/22/2019 2253 hrs



Museum
 AZ-COF-000788
 7/23/2019 Day
Incident Action Plan

Page: 4
 Dip Site
 Landing or Log Deck
 Helibase
 Staging Area

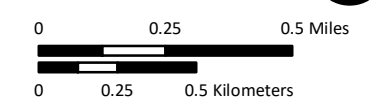
Division Break

Trailhead
 Picnic Area
 Wildfire Daily Fire Perimeter
 Trail
 Social Trail
 MVUM-open, all vehicles, yearlong
 MVUM-open, all vehicles, seasonal
 MVUM-open, hwy-legal vehicles, yearlong

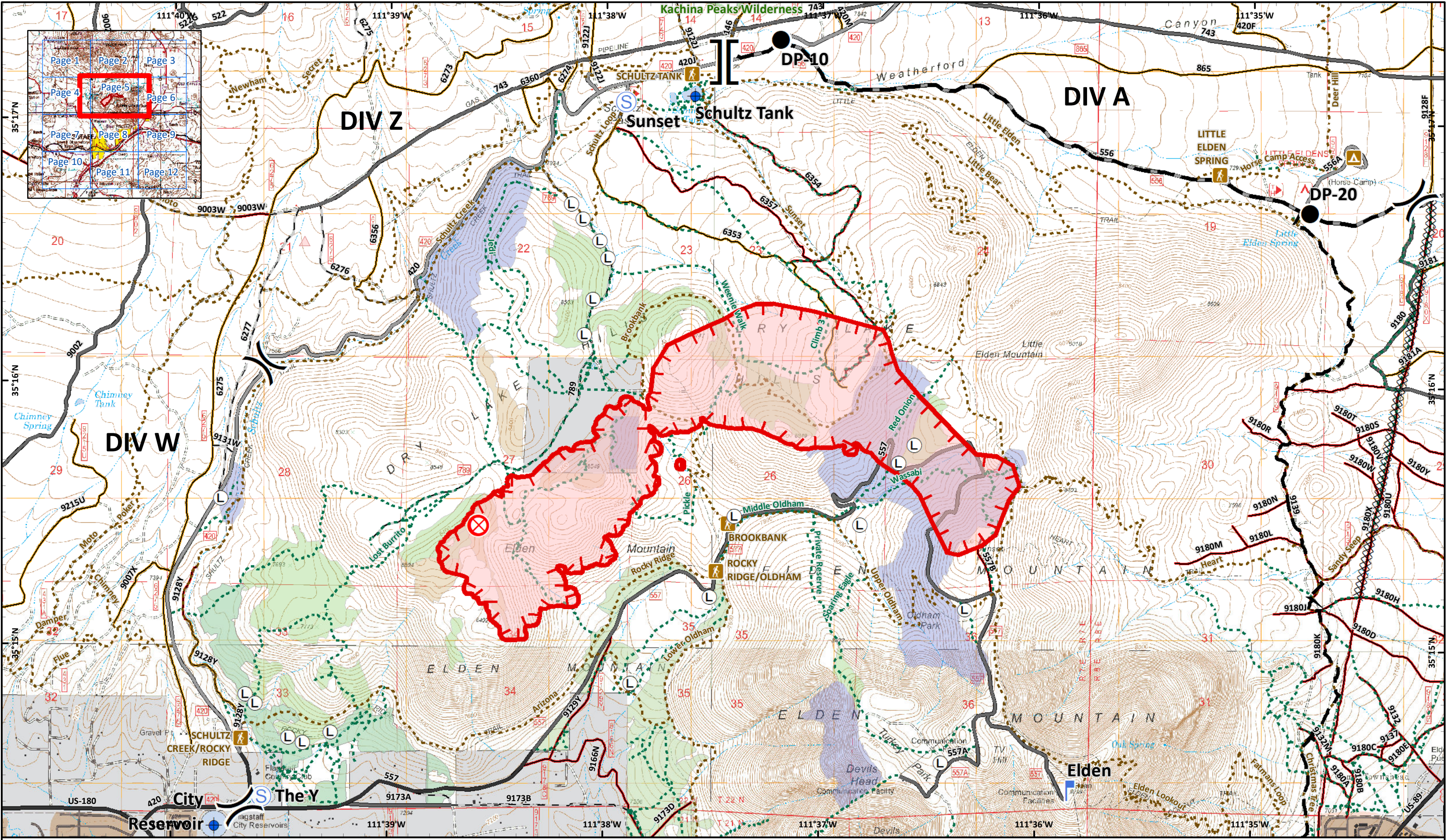
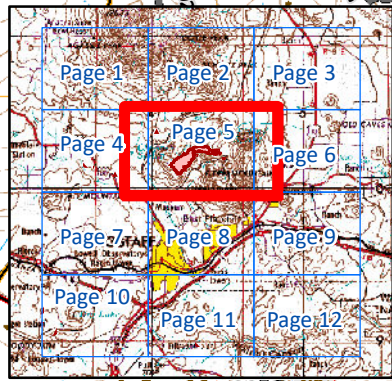
MVUM-open, hwy-legal vehicles, seasonal
 MVUM-open, public roads or highways
 Closed unless re-opened with NEPA
 Decommissioned or converted
 Limited FS admin use only
 Private, limited, or restricted access road

Hand Thinning/Piling
 Helicopter Cut Unit - Red Slash
 Mechanical Thin/Pile - No Decks
 Steep Slope - Machine Piles and/or Decks
 Phase 1 Elden Base Cut Unit

Approx 771 acres
 7/22/2019 1030 hrs



NAD 1983 UTM Zone 12N
 Prepared by: KGaiz
 7/22/2019 2253 hrs



Museum
 AZ-COF-000788
 7/23/2019 Day
Incident Action Plan

Page: 5

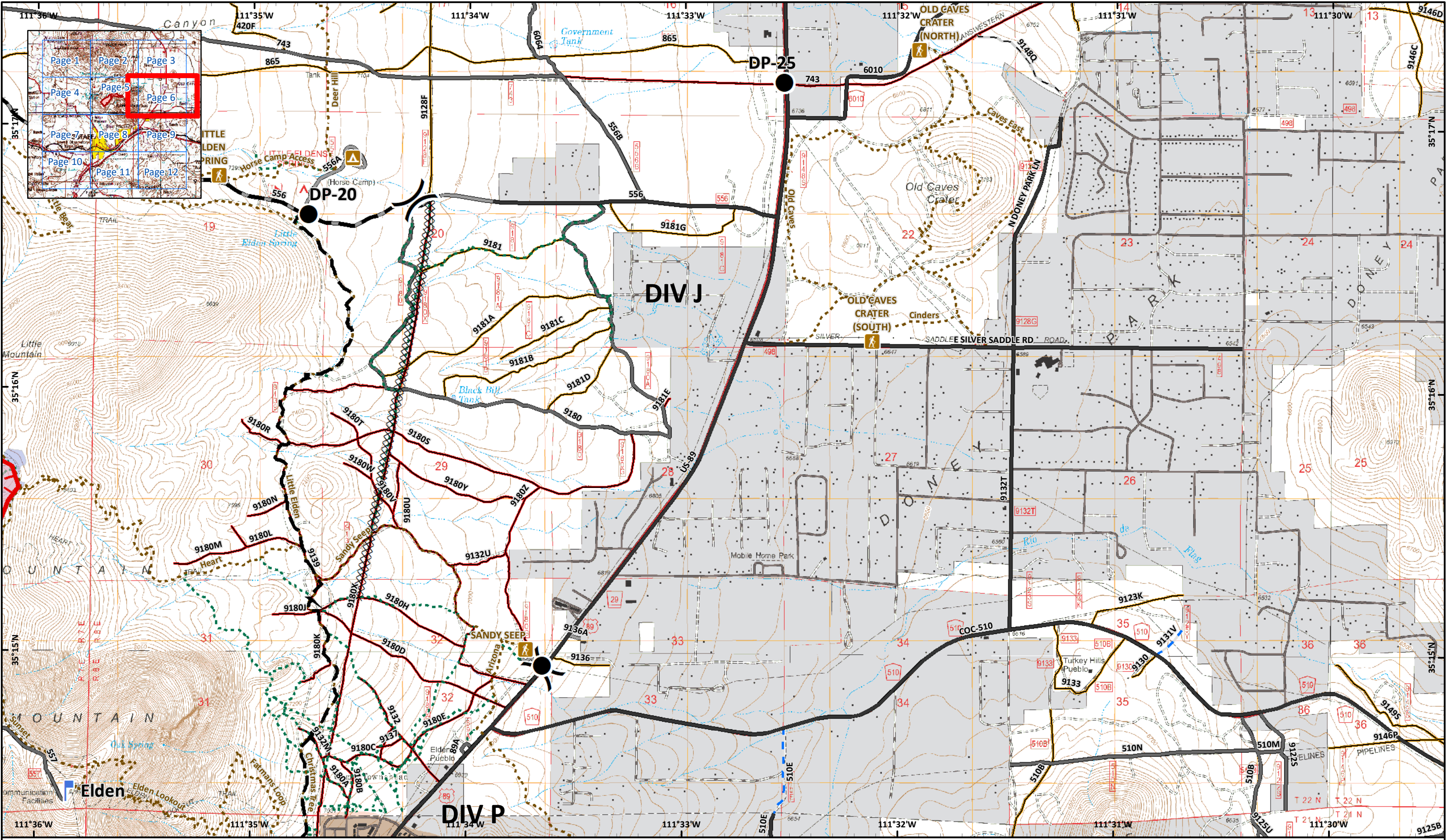
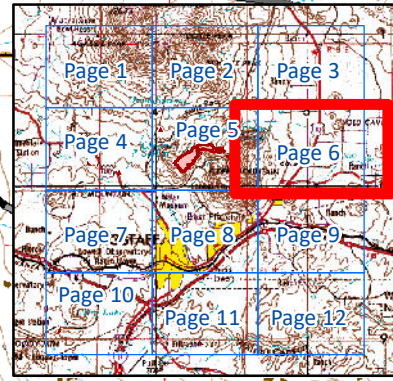
Dip Site	Fire Origin	Lookout	Division Break	Campground	Completed Dozer Line	MVUM-open, all vehicles, yearlong	Limited FS admin use only	Wilderness
Drop Point	Landing or Log Deck	Staging Area	Branch Break	Trailhead	Planned Fire Line	MVUM-open, all vehicles, seasonal	Hand Thinning/Piling	Helicopter Cut Unit - Red Slash
				Uncontrolled Fire Edge	Wildfire Daily Fire Perimeter	MVUM-open, hwy-legal vehicles, yearlong	Mechanical Thin/Pile - No Decks	Steep Slope - Machine Piles and/or Decks
				Social Trail	Trail	MVUM-open, public roads or highways	Phase 1 Elden Base Cut Unit	
					Decommissioned or converted	Steep Slope - Machine Piles and/or Decks		

Approx 771 acres
 7/22/2019 1030 hrs

0 0.25 0.5 Miles
 0 0.25 0.5 Kilometers

SOUTHWEST AREA INCIDENT MANAGEMENT TEAM

NAD 1983 UTM Zone 12N
 Prepared by: KGaia
 7/22/2019 2253 hrs

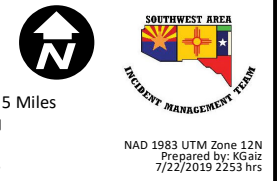
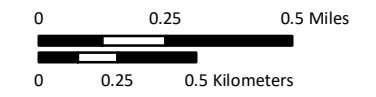


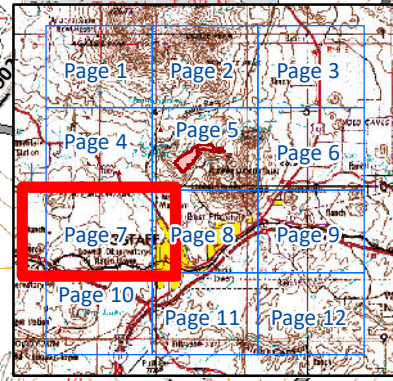
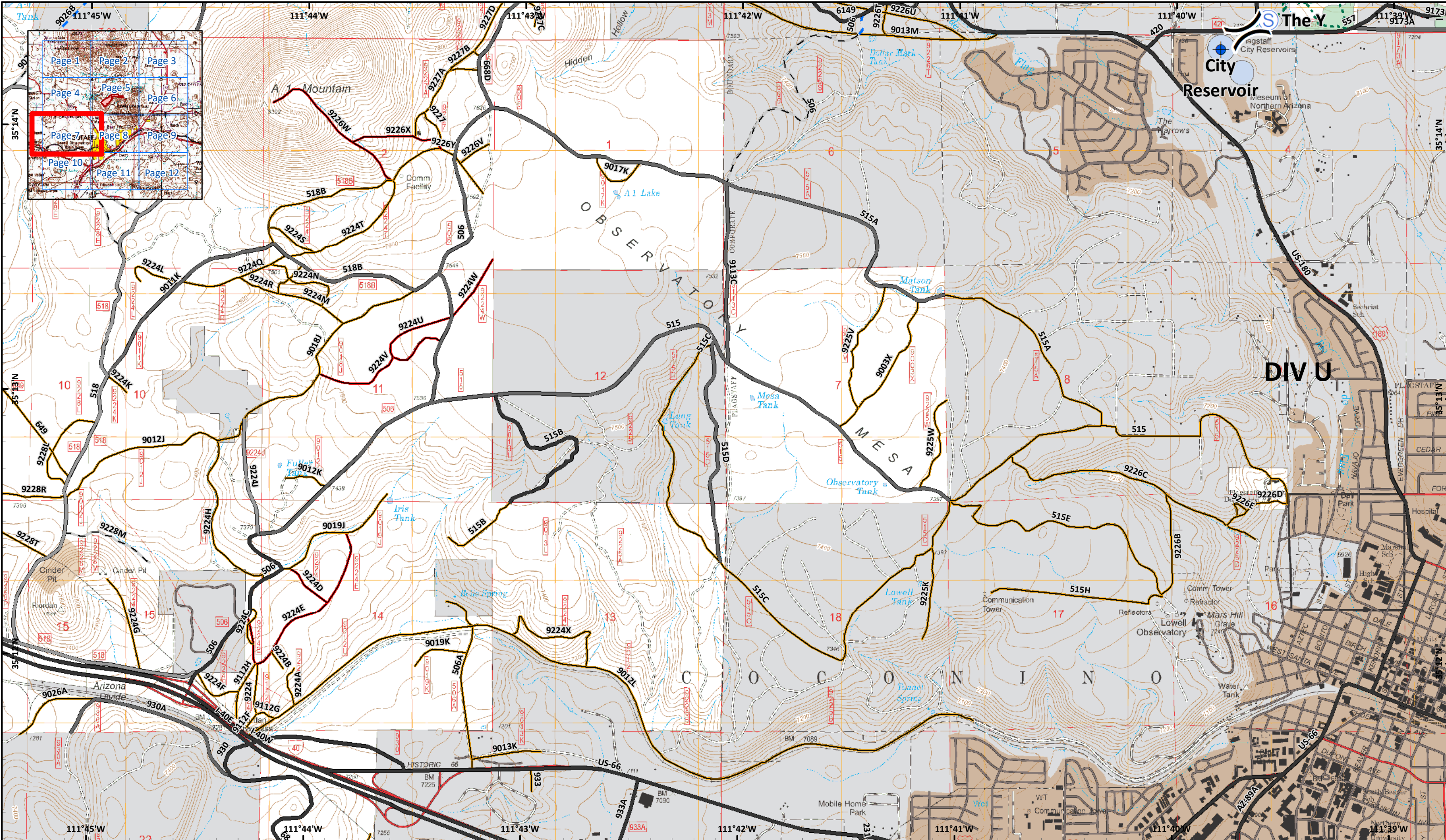
Museum
AZ-COF-000788
7/23/2019 Day
Incident Action Plan

Page: 6

- Drop Point
- Lookout
- Campground
- Completed Dozer Line
- Planned Fire Line
- Wildfire Daily Fire Perimeter
- Trail
- Social Trail
- Uncontrolled Fire Edge
- Division Break
- Trailhead
- Uncontrolled Fire Edge
- MVUM-open, all vehicles, yearlong
- MVUM-open, hwy-legal vehicles, yearlong
- MVUM-open, public roads or highways
- Closed unless re-opened with NEPA
- Decommissioned or converted
- Limited FS admin use only
- Private, limited, or restricted access road
- Helicopter Cut Unit - Red Slash

Approx 771 acres
7/22/2019 1030 hrs





Museum
 AZ-COF-000788
 7/23/2019 Day
Incident Action Plan

- Page: 7
- Dip Site
 - Staging Area
 - Division Break
 - Social Trail
 - MVUM-open, all vehicles, yearlong
 - Private, limited, or restricted access road
 - Mechanical Thin/Pile - No Decks
 - Phase 1 Elden Base Cut Unit
 - MVUM-open, hwy-legal vehicles, yearlong
 - MVUM-open, public roads or highways
 - Closed unless re-opened with NEPA
 - Decommissioned or converted
 - Limited FS admin use only

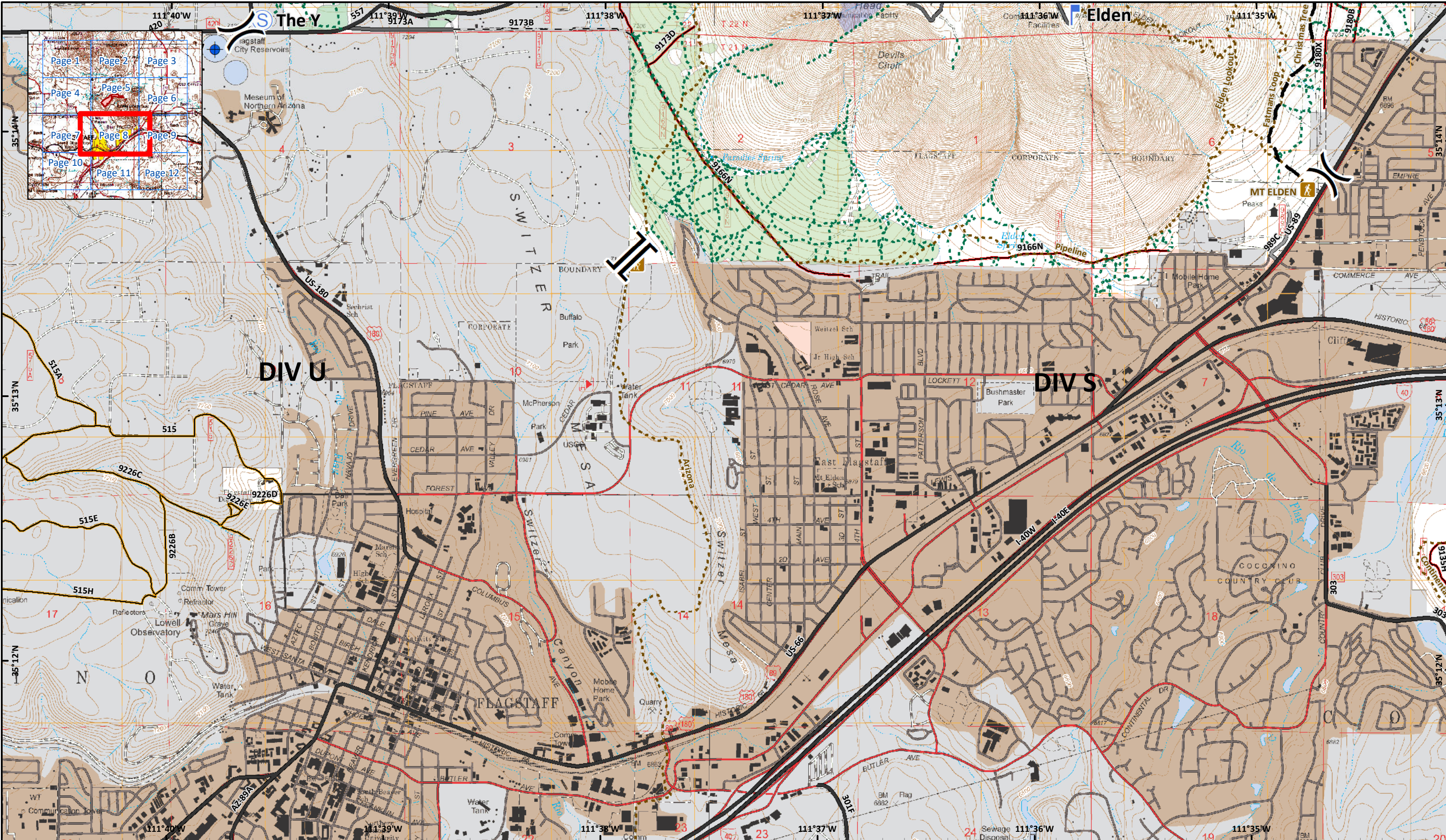
Approx 771 acres
 7/22/2019 1030 hrs

0 0.25 0.5 Miles
 0 0.25 0.5 Kilometers

NORTH

SOUTHWEST AREA INCIDENT MANAGEMENT TEAM

NAD 1983 UTM Zone 12N
 Prepared by: KGaiz
 7/22/2019 2253 hrs



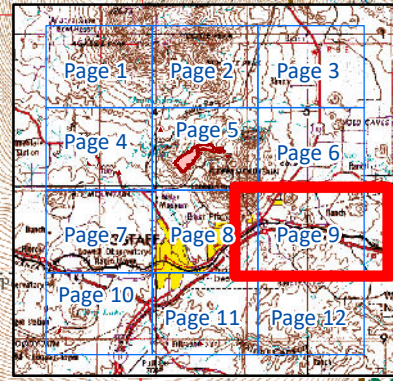
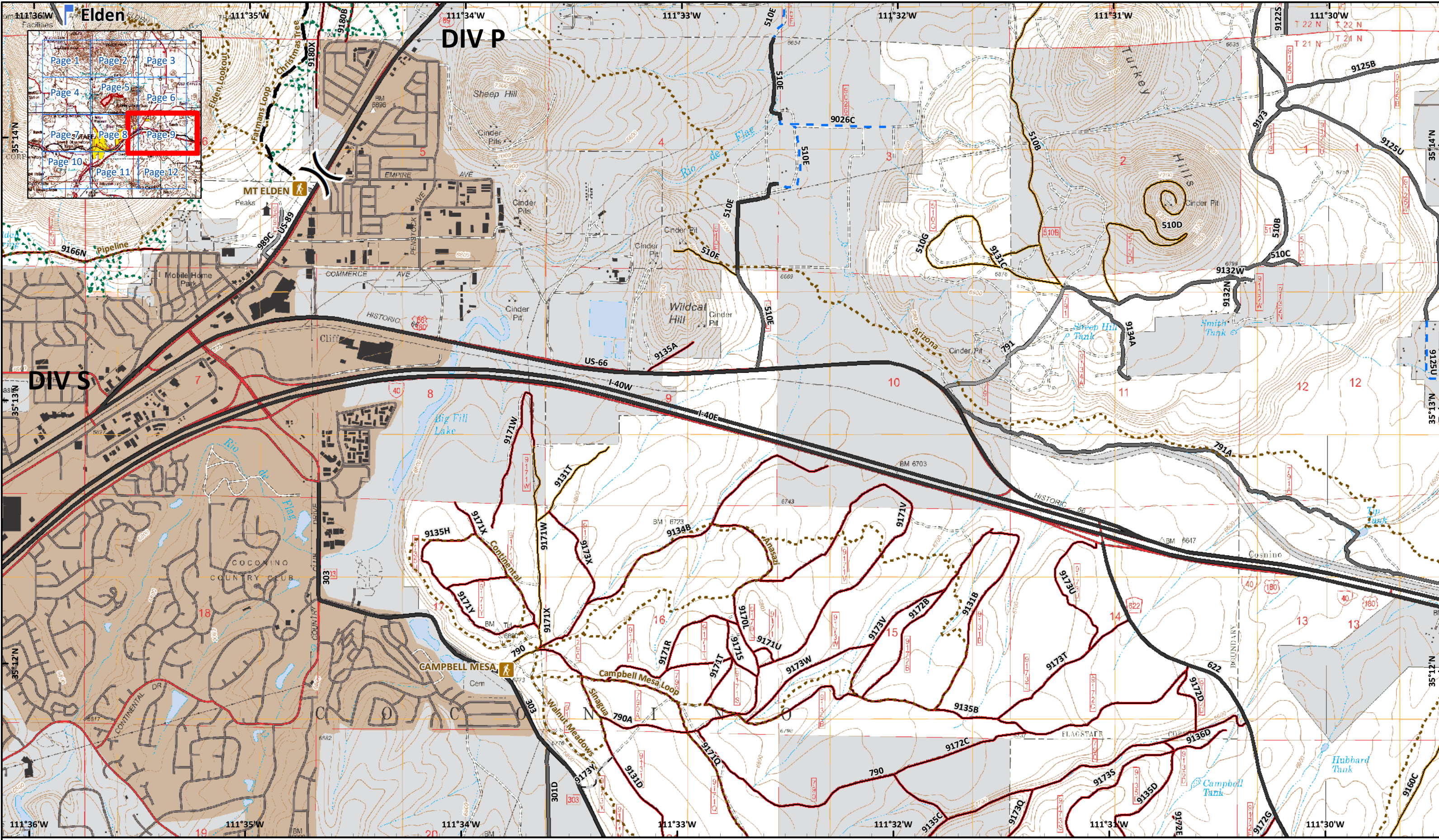
Museum
 AZ-COF-000788
 7/23/2019 Day
Incident Action Plan

Page: 8
 Dip Site
 Staging Area
 Lookout

Division Break
 Branch Break

- Trailhead
- Planned Fire Line
- Wildfire Daily Fire Perimeter
- Trail
- Social Trail
- MVUM-open, all vehicles, yearlong
- MVUM-open, hwy-legal vehicles, yearlong
- MVUM-open, public roads or highways
- Closed unless re-opened with NEPA
- Decommissioned or converted
- Limited FS admin use only
- Helicopter Cut Unit - Red Slash
- Mechanical Thin/Pile - No Decks
- Phase 1 Elden Base Cut Unit

Approx 771 acres
 7/22/2019 1030 hrs
 0 0.25 0.5 Miles
 0 0.25 0.5 Kilometers
 SOUTHWEST AREA
 INCIDENT MANAGEMENT TEAM
 NAD 1983 UTM Zone 12N
 Prepared by: KGaiz
 7/22/2019 2253 hrs



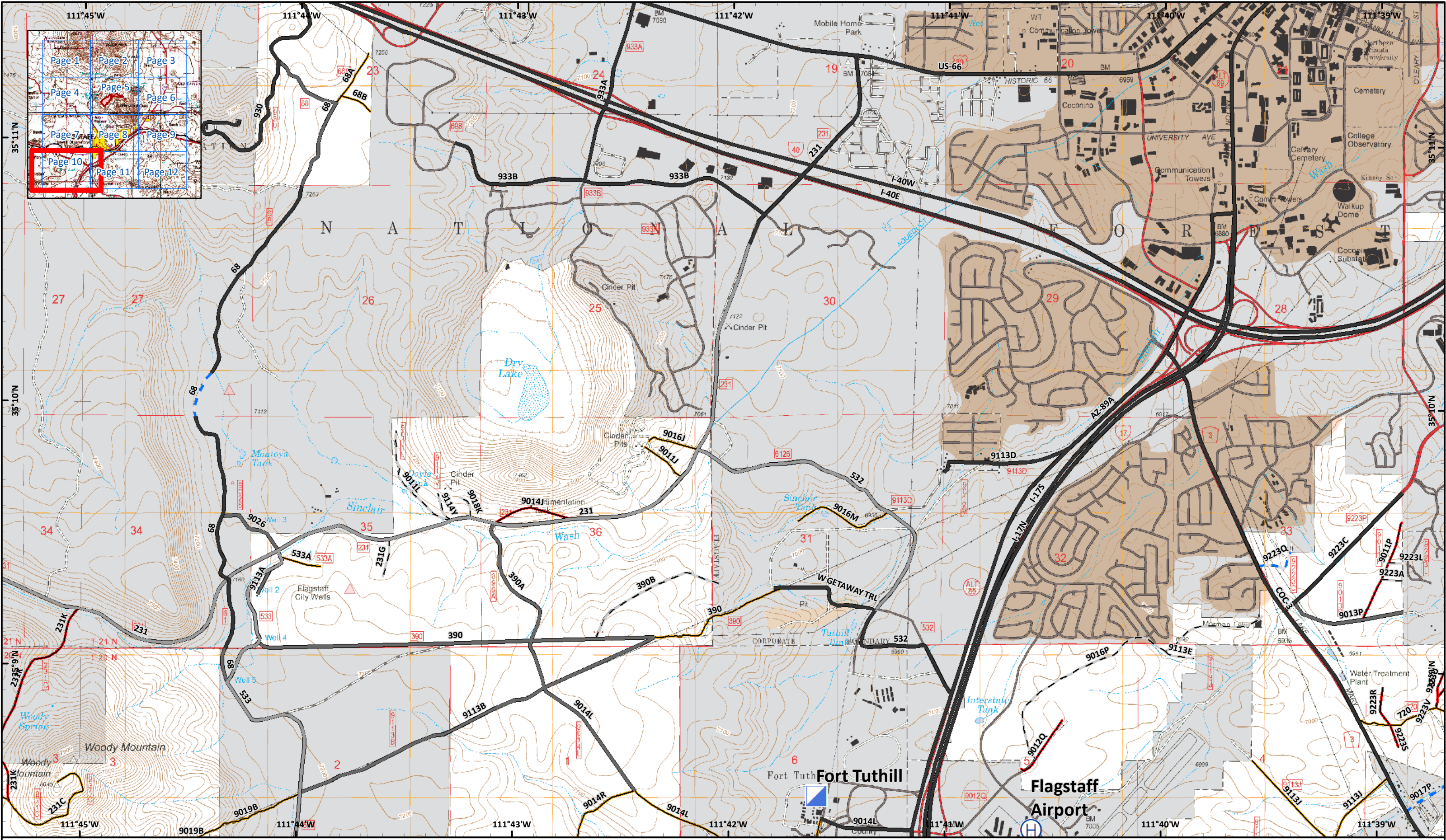
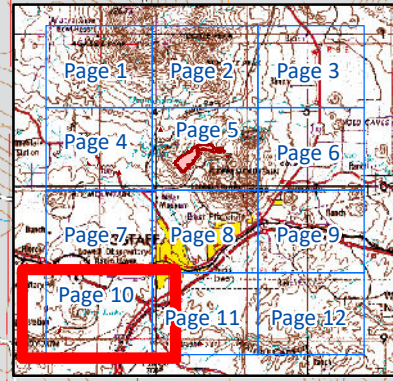
Museum
 AZ-COF-000788
 7/23/2019 Day
Incident Action Plan

- Page: 9
- Lookout
 - Division Break
 - Trailhead
 - Planned Fire Line
 - Trail
 - Social Trail
 - MVUM-open, all vehicles, yearlong
 - MVUM-open, hwy-legal vehicles, yearlong
 - MVUM-open, public roads or highways
 - Closed unless re-opened with NEPA
 - Decommissioned or converted
 - Limited FS admin use only
 - Private, limited, or restricted access road

Approx 771 acres
 7/22/2019 1030 hrs






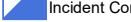




0 0.25 0.5 Miles
 0 0.25 0.5 Kilometers

NAD 1983 UTM Zone 12N
 Prepared by: KGaiz
 7/22/2019 2253 hrs




Museum
 AZ-COF-000788
 7/23/2019 Day
Incident Action Plan

Page: 10

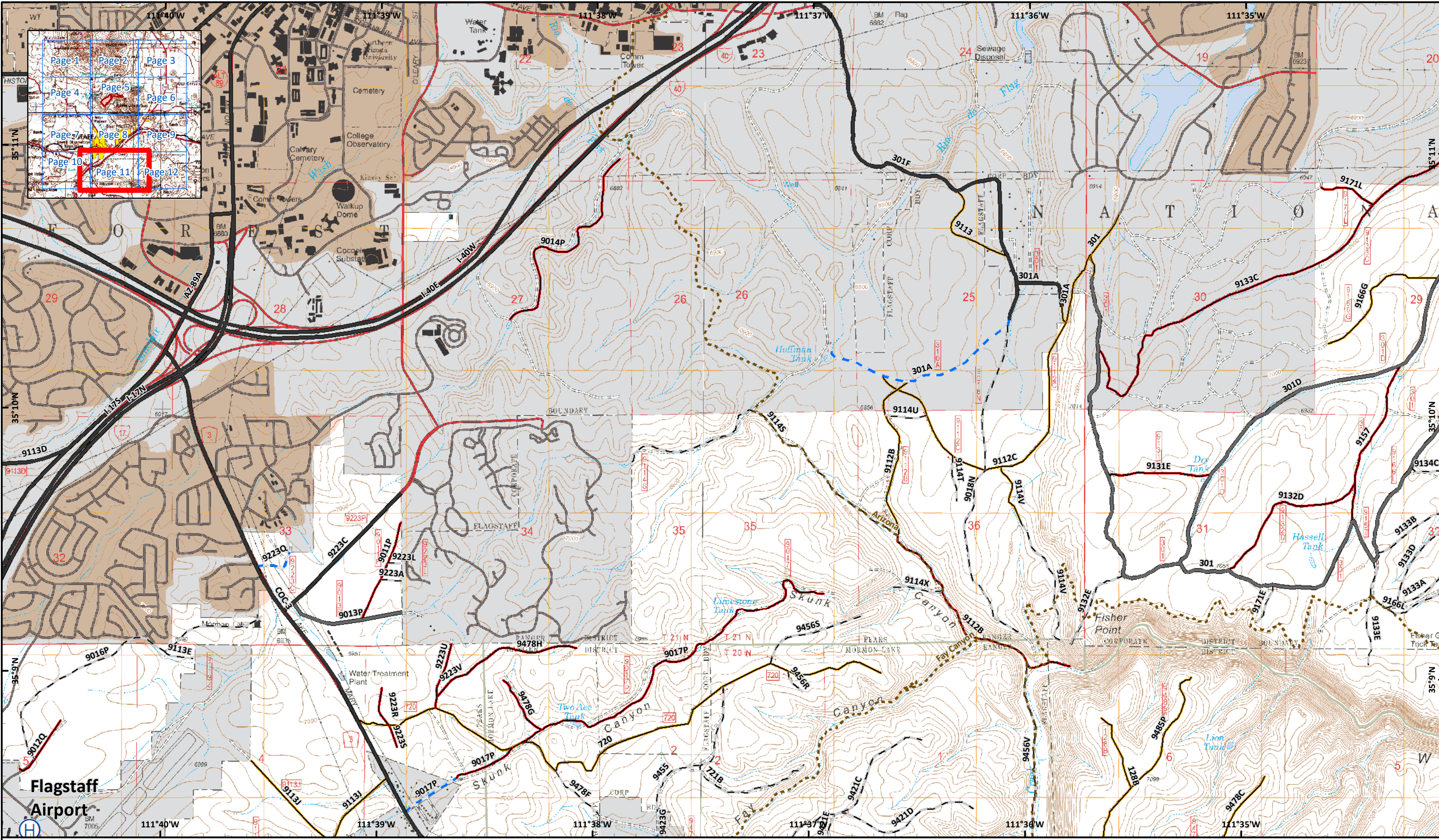
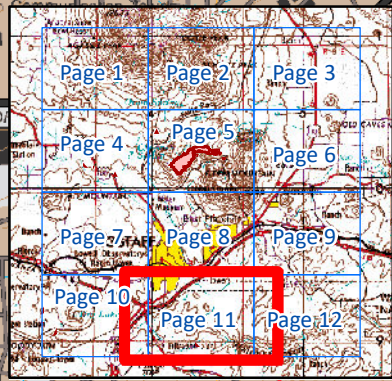
-  Wildfire Daily Fire Perimeter
-  Limited FS admin use only
-  Private, limited, or restricted access road
-  MVUM-open, all vehicles, yearlong
-  MVUM-open, hwy-legal vehicles, yearlong
-  MVUM-open, public roads or highways
-  Closed unless re-opened with NEPA
-  Decommissioned or converted
-  Helibase
-  Incident Command Post

Approx 771 acres
 7/22/2019 1030 hrs

0 0.25 0.5 Miles
 0 0.25 0.5 Kilometers



NAD 1983 UTM Zone 12N
 Prepared by: KGaiz
 7/22/2019 2253 hrs



Museum
AZ-COF-000788
7/23/2019 Day
Incident Action Plan

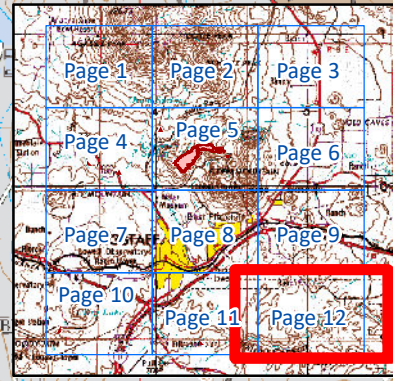
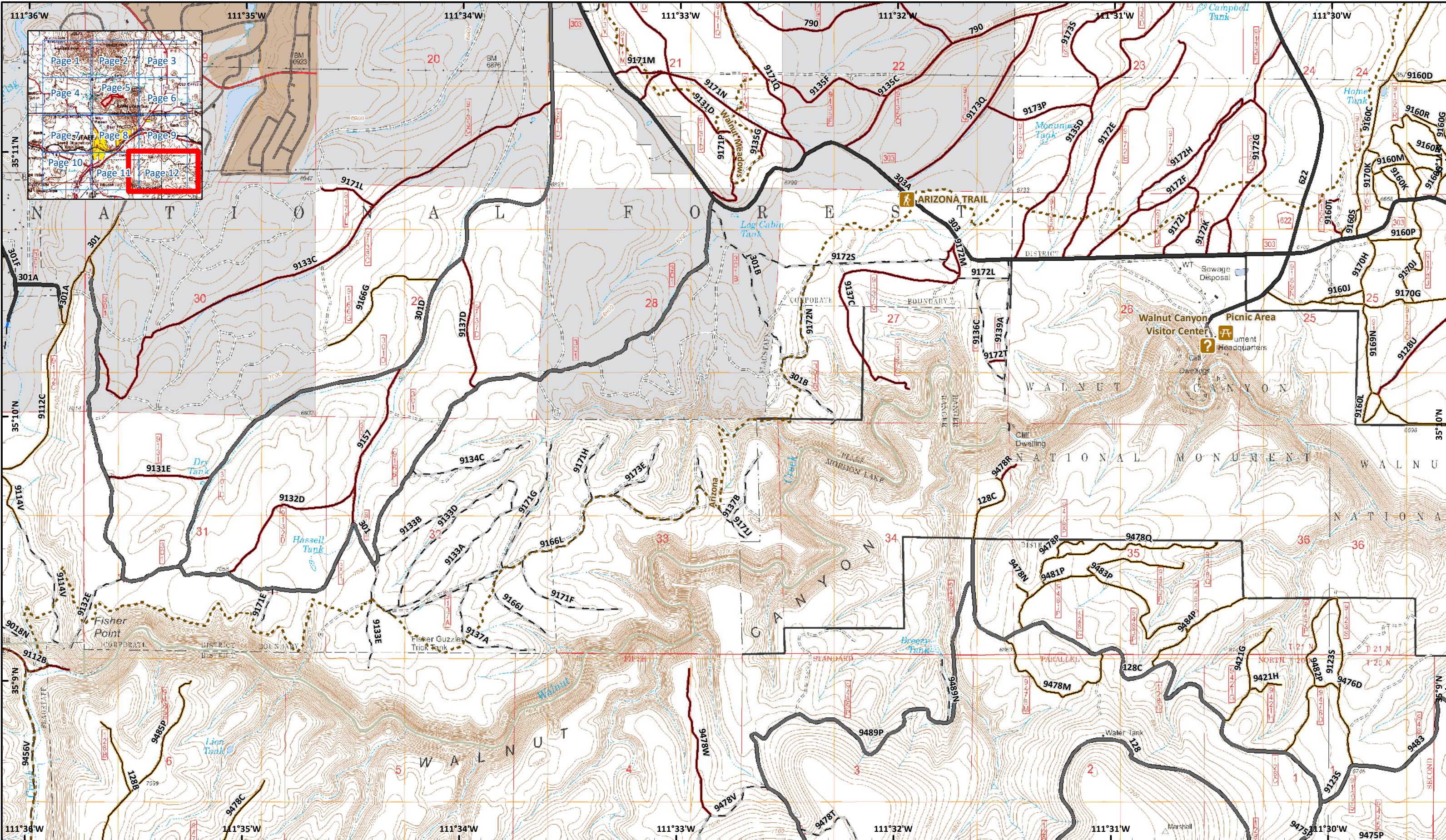
- Page: 11
- Helibase
 - Wildfire Daily Fire Perimeter
 - Trail
 - MVUM-open, all vehicles, yearlong
 - MVUM-open, public roads or highways
 - Closed unless re-opened with NEPA
 - Decommissioned or converted
 - Limited FS admin use only
 - Private, limited, or restricted access road

Approx 771 acres
7/22/2019 1030 hrs

0 0.25 0.5 Miles
0 0.25 0.5 Kilometers

SOUTHWEST AREA
INCIDENT MANAGEMENT TEAM

NAD 1983 UTM Zone 12N
Prepared by: KGaiz
7/22/2019 2253 hrs



Museum
 AZ-COF-000788
 7/23/2019 Day
Incident Action Plan

- Page: 12
- Visitor/Information Center
 - Trailhead
 - Picnic Area
 - Trail
 - Limited FS admin use only
 - Private, limited, or restricted access road
 - MVUM-open, all vehicles, yearlong
 - MVUM-open, hwy-legal vehicles, yearlong
 - MVUM-open, public roads or highways
 - Closed unless re-opened with NEPA
 - Decommissioned or converted

Approx 771 acres
 7/22/2019 1030 hrs

0 0.25 0.5 Miles
 0 0.25 0.5 Kilometers

NAD 1983 UTM Zone 12N
 Prepared by: KGaiz
 7/22/2019 2253 hrs