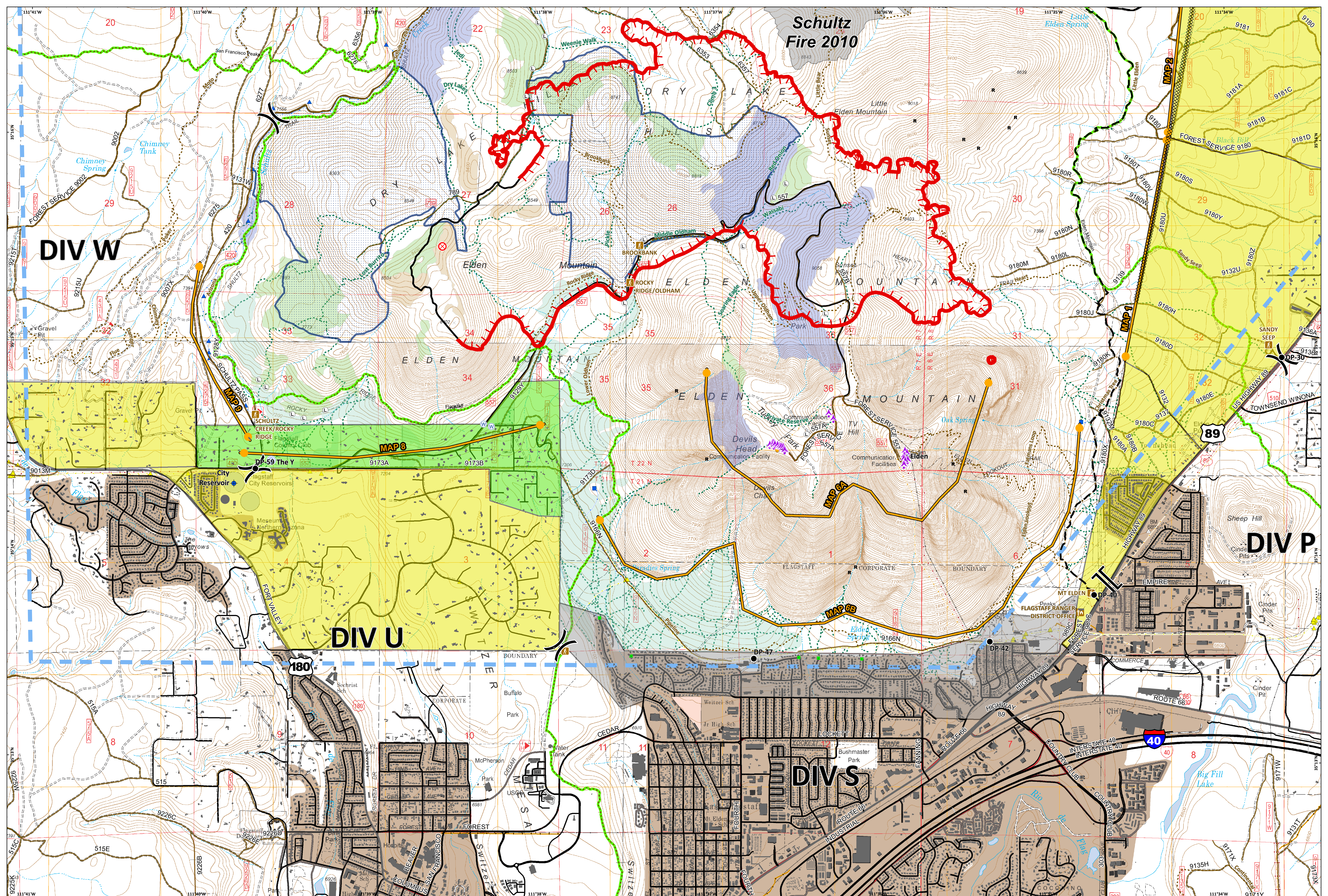


Schultz Fire 2010



Museum
AZ-COF-000788
7/24/2019 Day

Structure Group South

<ul style="list-style-type: none"> Aerial Hazard Dip Site Drop Point Fire Origin Landmark Landing or Log Deck Lookout Resource Location Staging Area Water Source 	<ul style="list-style-type: none"> Division Break Branch Break Flagstaff Ranger District Office Trailhead Uncontrolled Fire Edge Completed Line Completed Dozer Line Planned Fire Line Temporary Flight Restriction Management Action Point 	<p>Evacuation Type</p> <ul style="list-style-type: none"> Go Set Ready Social Trail Trail <p>Road Type</p> <ul style="list-style-type: none"> Interstates Interstate Ramp Highways Major Roads Minor Roads Forest Service - MVUM Other Forest Service - All Gas pipeline fixture Qwest equipment 	<ul style="list-style-type: none"> Arizona National Scenic Trail Water facility Water line fixture Buried fiber optic cable; Buried telephone line Gas pipeline Overhead power line Overhead telephone line Reclaimed water line (snow-making), FS land only Water line Buildings1 MSO PAC Hand Thinning/Piling Helicopter Cut Unit - Red Slash Mechanical Thin/Pile - No Decks Steep Slope - Machine Piles and/or Decks Fire History Perimeters
---	---	--	--

Approx 1887 acres
7/23/2019 2127 hrs

0 0.5 1
Miles
0 0.5 1
Kilometers

SOUTHWEST AREA
INCIDENT MANAGEMENT TEAM

NAD 1983 UTM Zone 12N
Prepared by: alex@herren
7/24/2019 0459 hrs