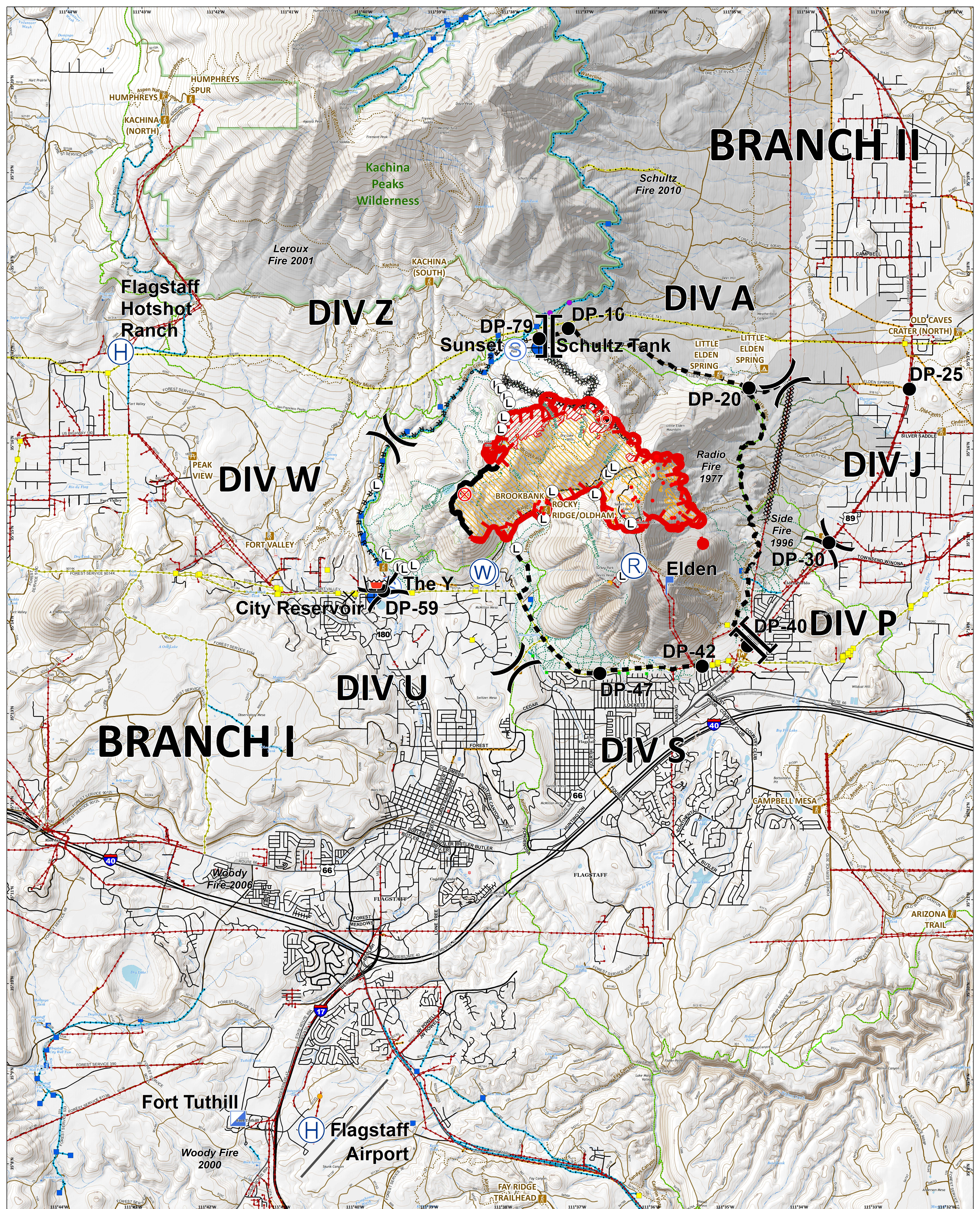


BRANCH II



Museum
AZ-COF-000788
7/25/2019 Day
Briefing

- | | | | | | |
|----------------------------------|------------------------------|---|---------------|-------------------------------|--|
| IR Isolated Heat Source | Completed Line | Dip Site | Lookout | Overhead power/phone line | Mechanical Thin/Pile - No Decks |
| Flagstaff Ranger District Office | Completed Dozer Line | Drop Point | Repeater | Water/Reclaimed Water line | Steep Slope - Machine Piles and/or Decks |
| Campground | R - R Road as Completed Line | Landmark | Staging Area | Utility corridor | Wilderness |
| Trailhead | Planned Fire Line | Fire Origin | Water Source | Trail | Streams |
| Picnic Area | IR Intense Heat | Holibase | Value at Risk | Social Trail | Fire History |
| Uncontrolled Fire Edge | IR Scattered Heat | Incident Command Post | Fire Facility | Arizona National Scenic Trail | Forest Service - All |
| | | Buried fiber optic cable; Buried telephone line | Gas pipeline | Interstates | Forest Service - M/VUM |
| | | | | Interstate Ramp | Other |
| | | | | | Hand Thinning/Piling |
| | | | | | Helicopter Cut Unit - Red Slash |

Approx 1927 acres (IR)
7/24/2019 2100 hrs

0 0.5 1 Miles
0 0.5 1 Kilometers

SOUTHWEST AREA
INCIDENT MANAGEMENT TEAM

NAD 1983 UTM Zone 12N
Prepared by: K042
7/25/2019 0401