

**Pine Lodge IAP Index  
NM-LNF-000249**

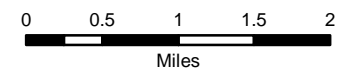
**Day Operational Period  
6/25/2019**



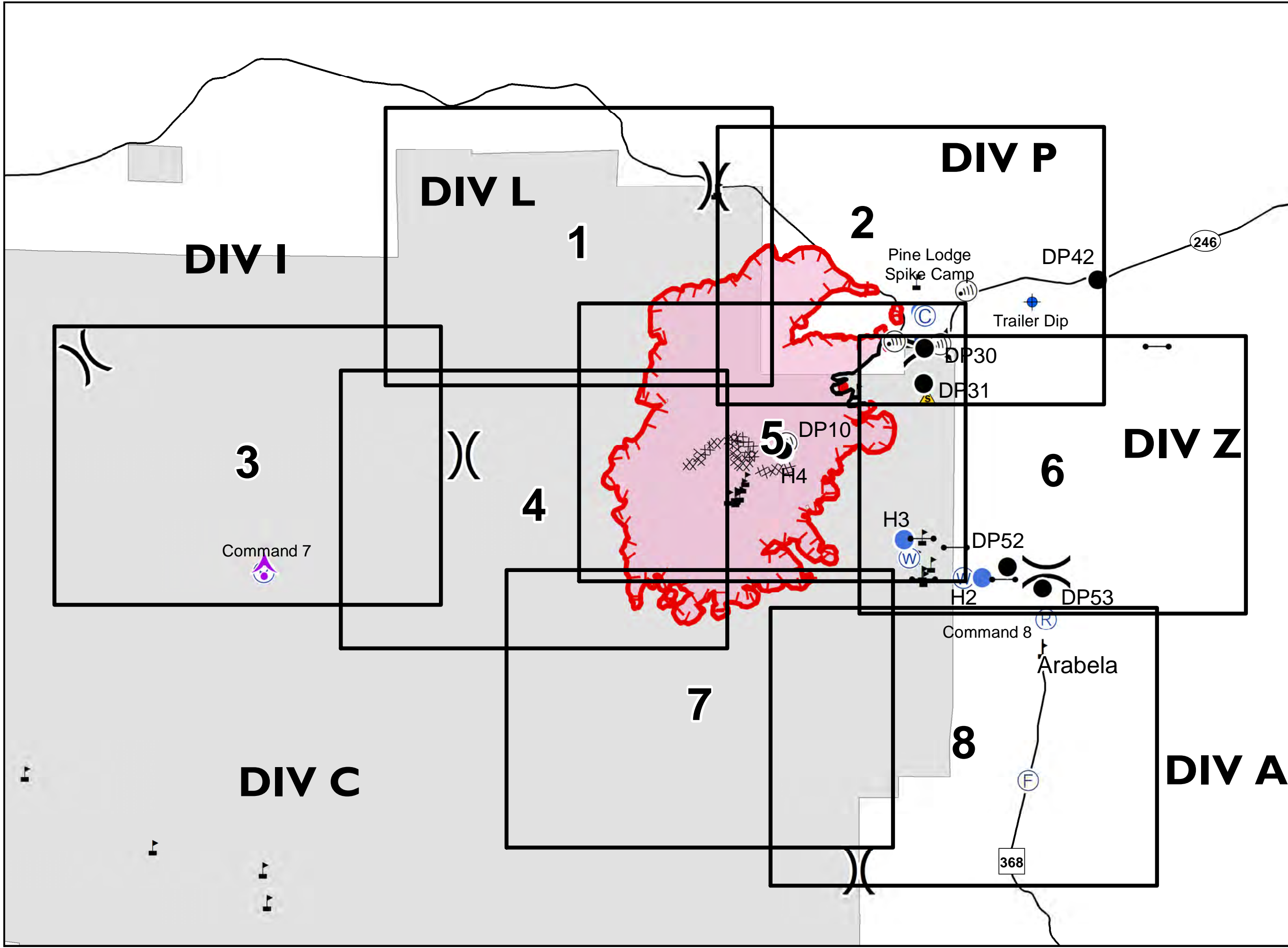
GIS Acres 7,898  
6/23/2019 2218

- Aerial Hazard
- Camp
- Dip Site
- Drop Point
- Fire Station
- Gate
- Helispot
- Verizon Service
- Mobile Weather Unit
- Repeater
- Safety Zone
- Water Source
- Value at Risk
- Division Break

- Uncontrolled Fire Edge
- Completed Line
- Completed Dozer Line
- Wildfire Daily Fire Perimeter
- National Forest



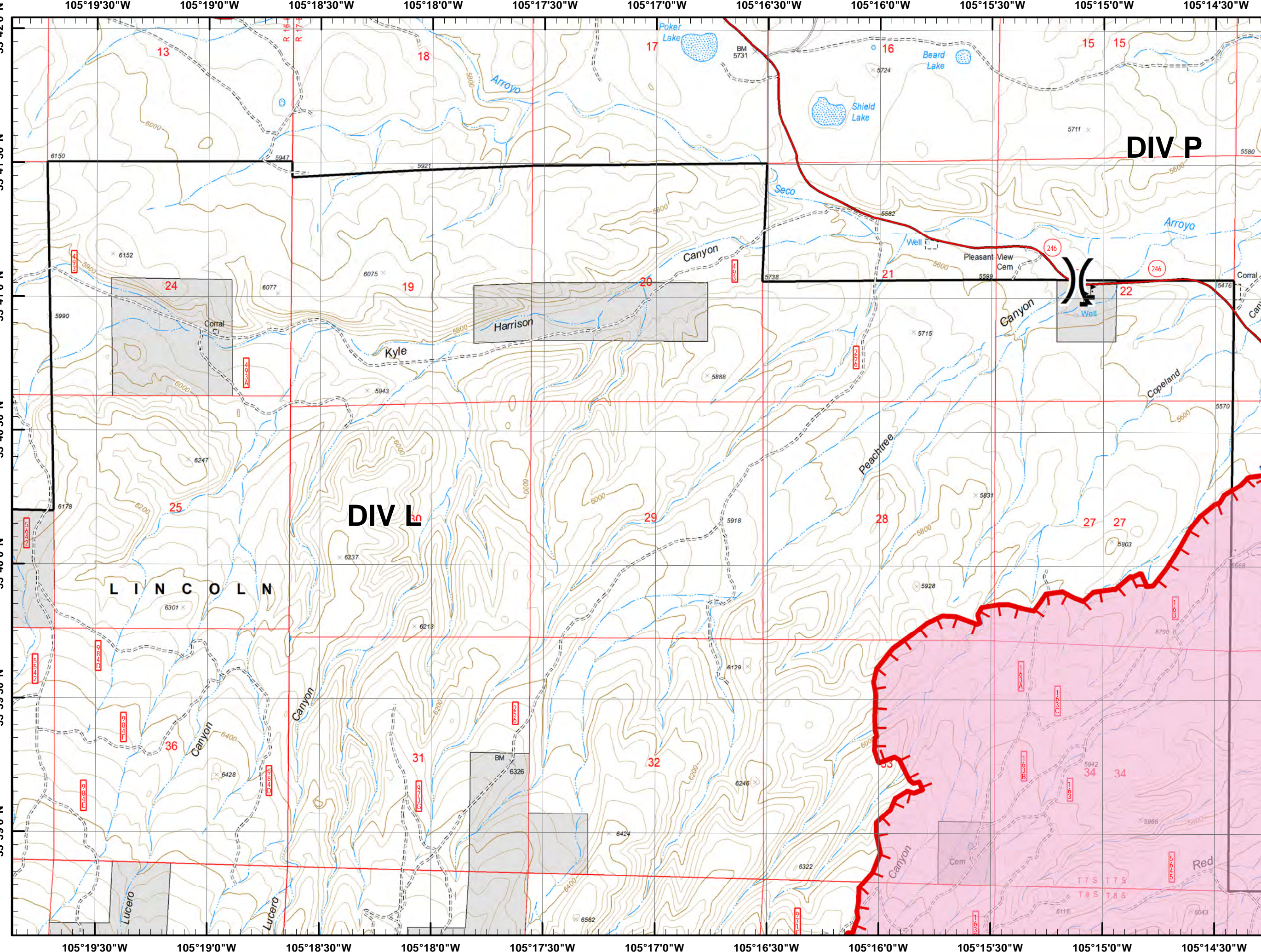
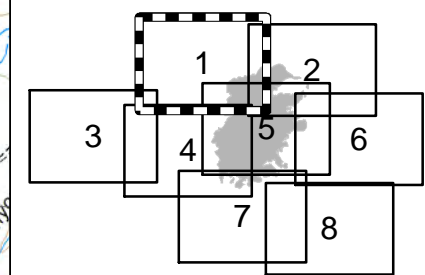
NAD 83 UTM Zone 13N  
SW IMT 5 GIS 6/24/2019 10:18:15 PM



**Pine Lodge IAP**  
**NM-LNF-000249**  
**Day Operational Period**  
**6/25/2019**

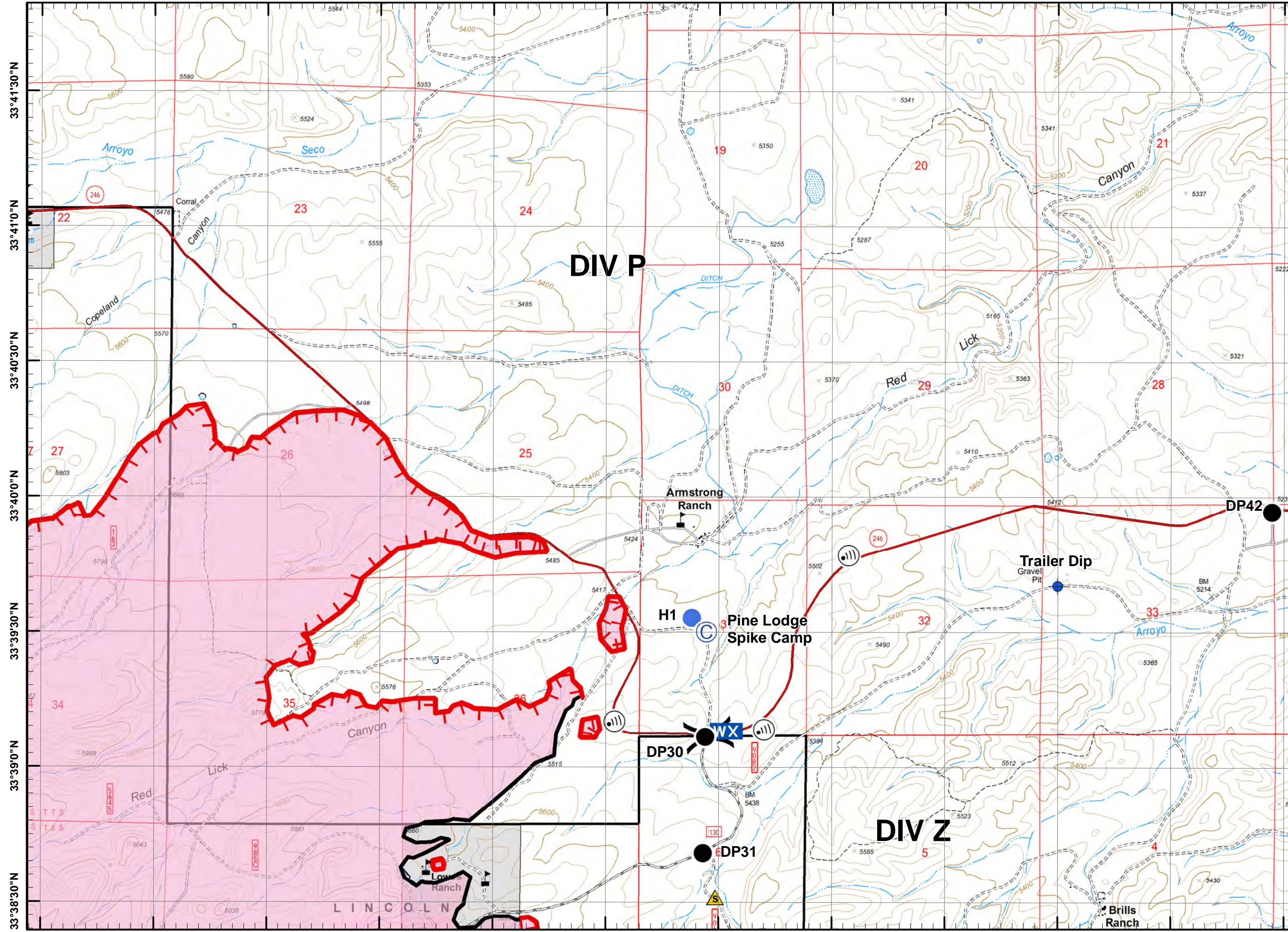


Page 1 of 8



- Aerial Hazard
  - Camp
  - Dip Site
  - Drop Point
  - Fire Station
  - Gate
  - Helispot
  - Verizon Service
  - Mobile Weather Unit
  - Repeater
  - Safety Zone
  - Water Source
  - Value at Risk
  - Uncontrolled Fire Edge
  - Completed Line
  - Completed Dozer Line
  - Wildfire Daily Fire Perimeter
  - National Forest
- 0 0.25 0.5  
Miles
- NAD 83 UTM Zone 13N  
SW IMT 5 GIS 6/24/2019 10:17:17 PM

105°15'0"W 105°14'30"W 105°14'0"W 105°13'30"W 105°13'0"W 105°12'30"W 105°12'0"W 105°11'30"W 105°11'0"W 105°10'30"W 105°10'0"W 105°9'30"W



# Pine Lodge IAP

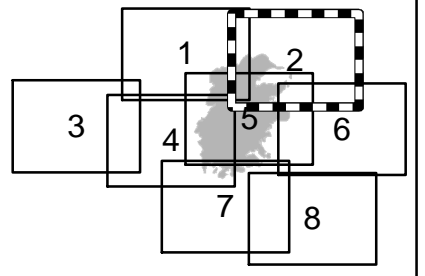
## NM-LNF-000249

### Day Operational Period

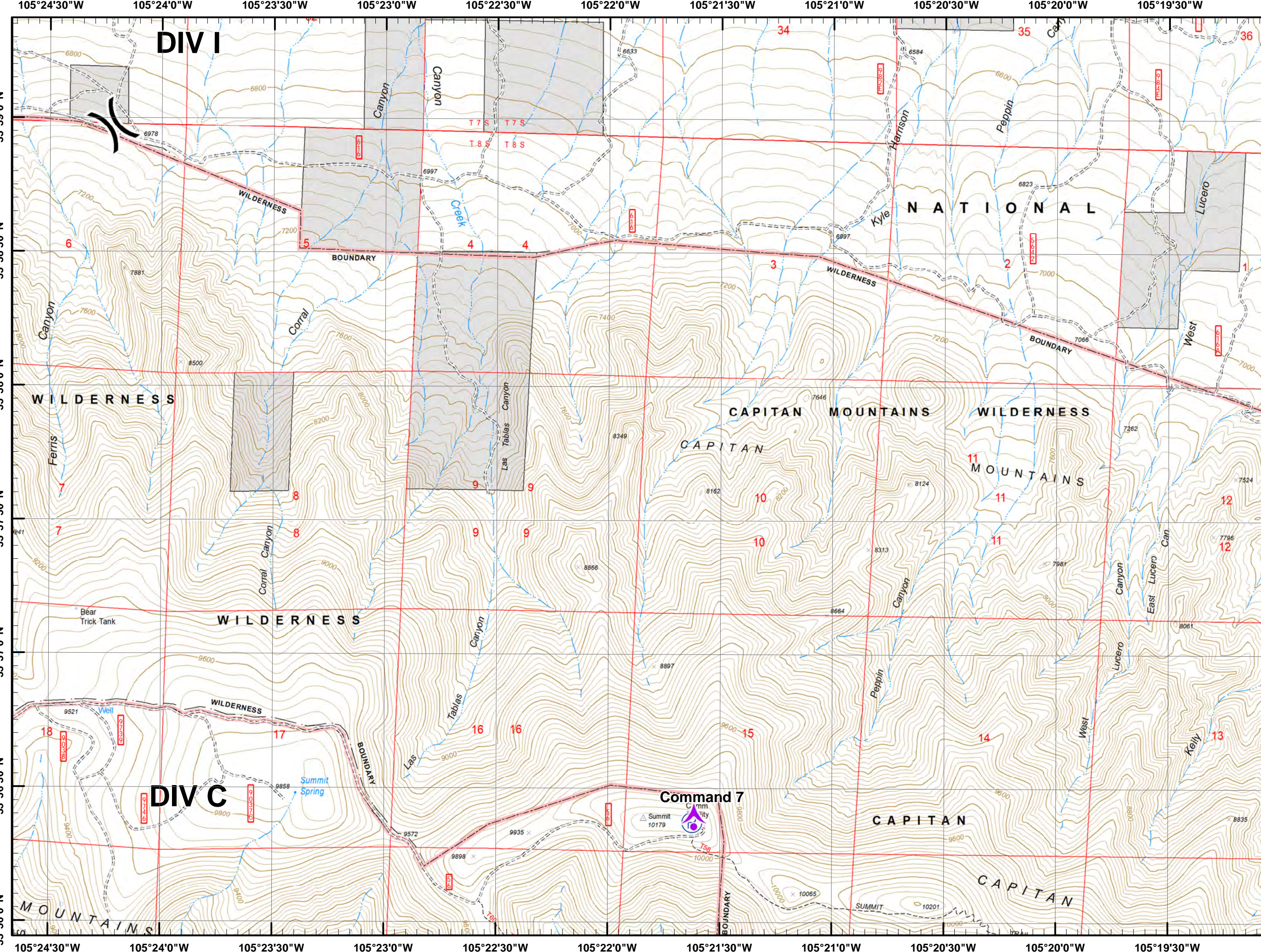
6/25/2019



Page 2 of 8



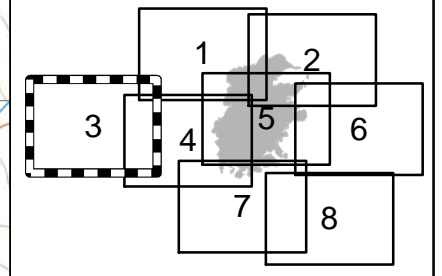
- Aerial Hazard
  - Camp
  - Dip Site
  - Drop Point
  - Fire Station
  - Gate
  - Helispot
  - Verizon Service
  - Mobile Weather Unit
  - Repeater
  - Safety Zone
  - Water Source
  - Value at Risk
  - Division Break
  - Uncontrolled Fire Edge
  - Completed Line
  - Completed Dozer Line
  - Wildfire Daily Fire Perimeter
  - National Forest
- 0 0.25 0.5  
Miles
- NAD 83 UTM Zone 13N  
SW IMT 5 GIS 6/24/2019 10:21:03 PM



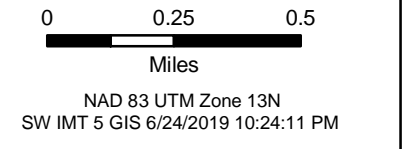
**Pine Lodge IAP**  
**NM-LNF-000249**  
 Day Operational Period  
 6/25/2019



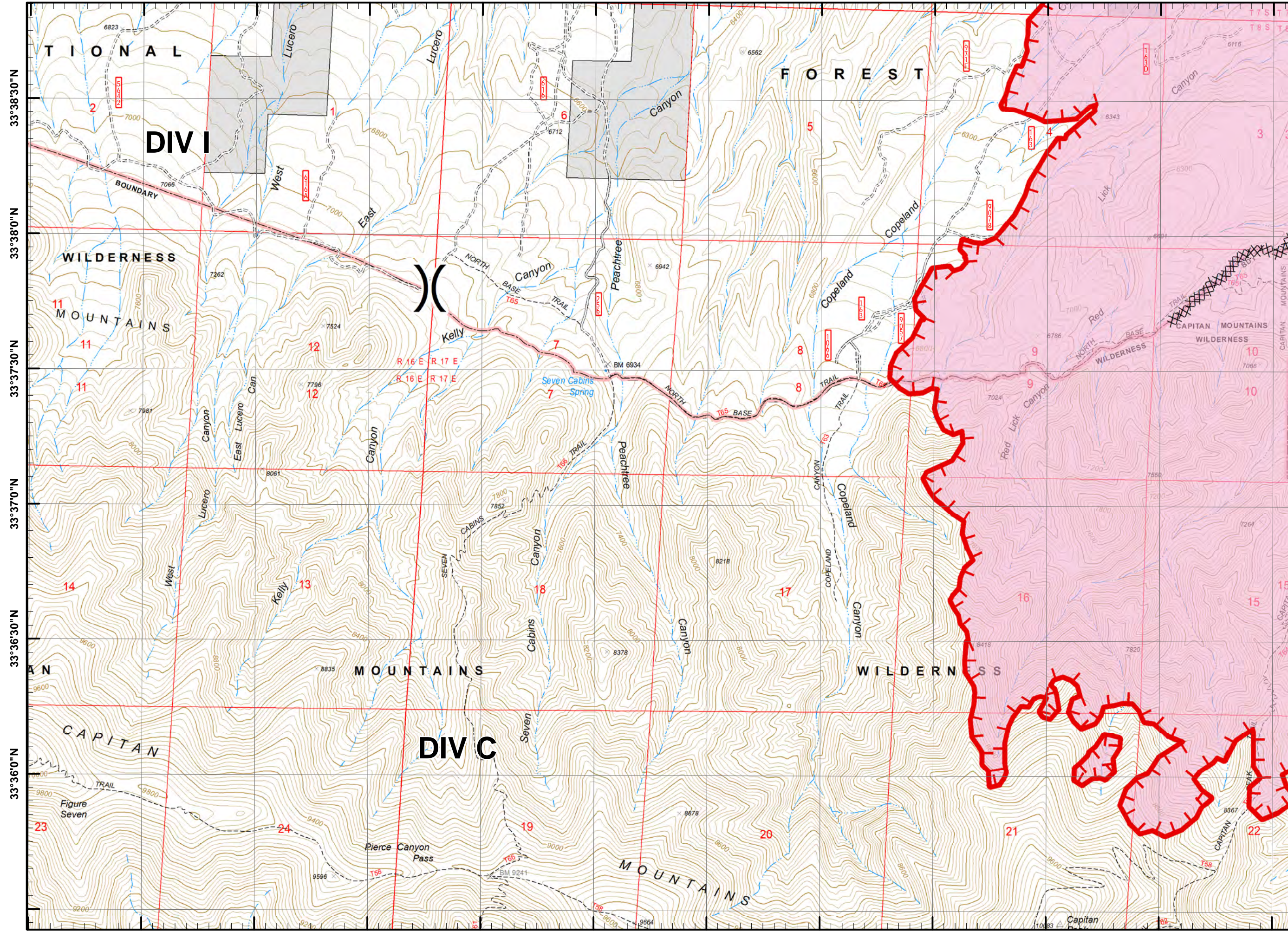
Page 3 of 8



- Aerial Hazard
- Camp
- Dip Site
- Drop Point
- Fire Station
- Gate
- Helispot
- Verizon Service
- Mobile Weather Unit
- Repeater
- Safety Zone
- Water Source
- Value at Risk
- Division Break
- Uncontrolled Fire Edge
- Completed Line
- Completed Dozer Line
- Wildfire Daily Fire Perimeter
- National Forest



05°20'30"W 105°20'0"W 105°19'30"W 105°19'0"W 105°18'30"W 105°18'0"W 105°17'30"W 105°17'0"W 105°16'30"W 105°16'0"W 105°15'30"W 105°15'0"W



# Pine Lodge IAP

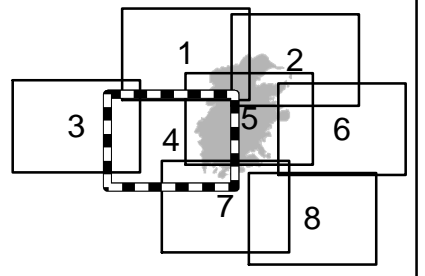
## NM-LNF-000249

### Day Operational Period

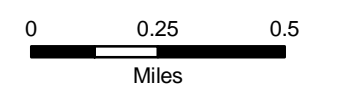
6/25/2019



Page 4 of 8



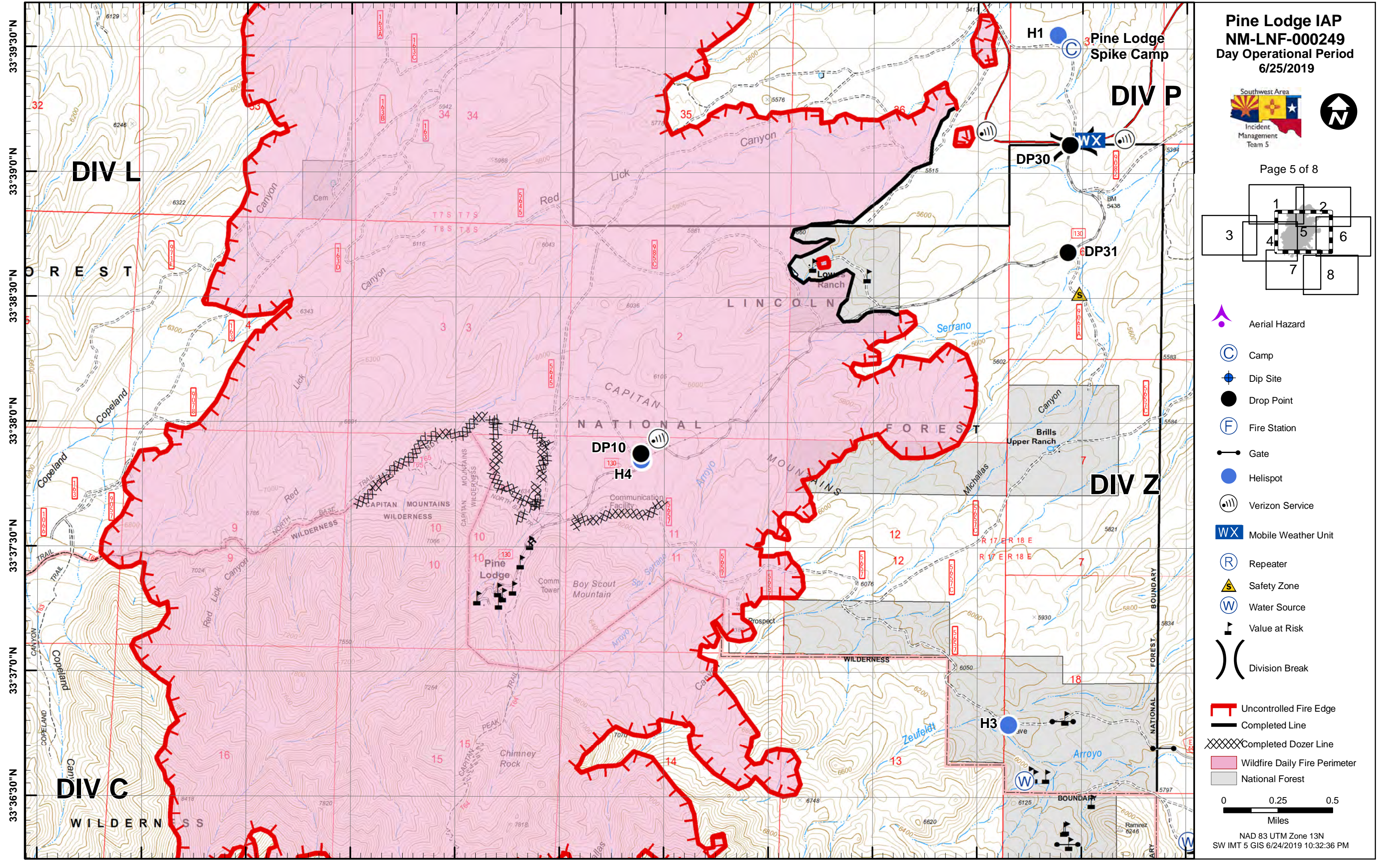
- Aerial Hazard
- Camp
- Dip Site
- Drop Point
- Fire Station
- Gate
- Helispot
- Verizon Service
- Mobile Weather Unit
- Repeater
- Safety Zone
- Water Source
- Value at Risk
- Division Break
- Uncontrolled Fire Edge
- Completed Line
- Completed Dozer Line
- Wildfire Daily Fire Perimeter
- National Forest



NAD 83 UTM Zone 13N  
SW IMT 5 GIS 6/24/2019 10:27:51 PM

05°20'30"W 105°20'0"W 105°19'30"W 105°19'0"W 105°18'30"W 105°18'0"W 105°17'30"W 105°17'0"W 105°16'30"W 105°16'0"W 105°15'30"W 105°15'0"W

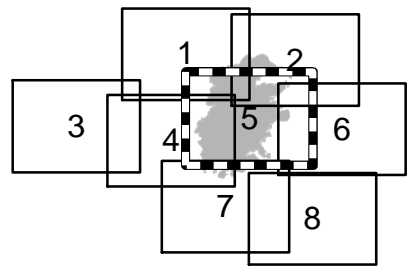
105°17'0"W 105°16'30"W 105°16'0"W 105°15'30"W 105°15'0"W 105°14'30"W 105°14'0"W 105°13'30"W 105°13'0"W 105°12'30"W 105°12'0"W 105°11'30"W



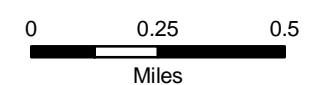
# Pine Lodge IAP NM-LNF-000249 Day Operational Period 6/25/2019



Page 5 of 8



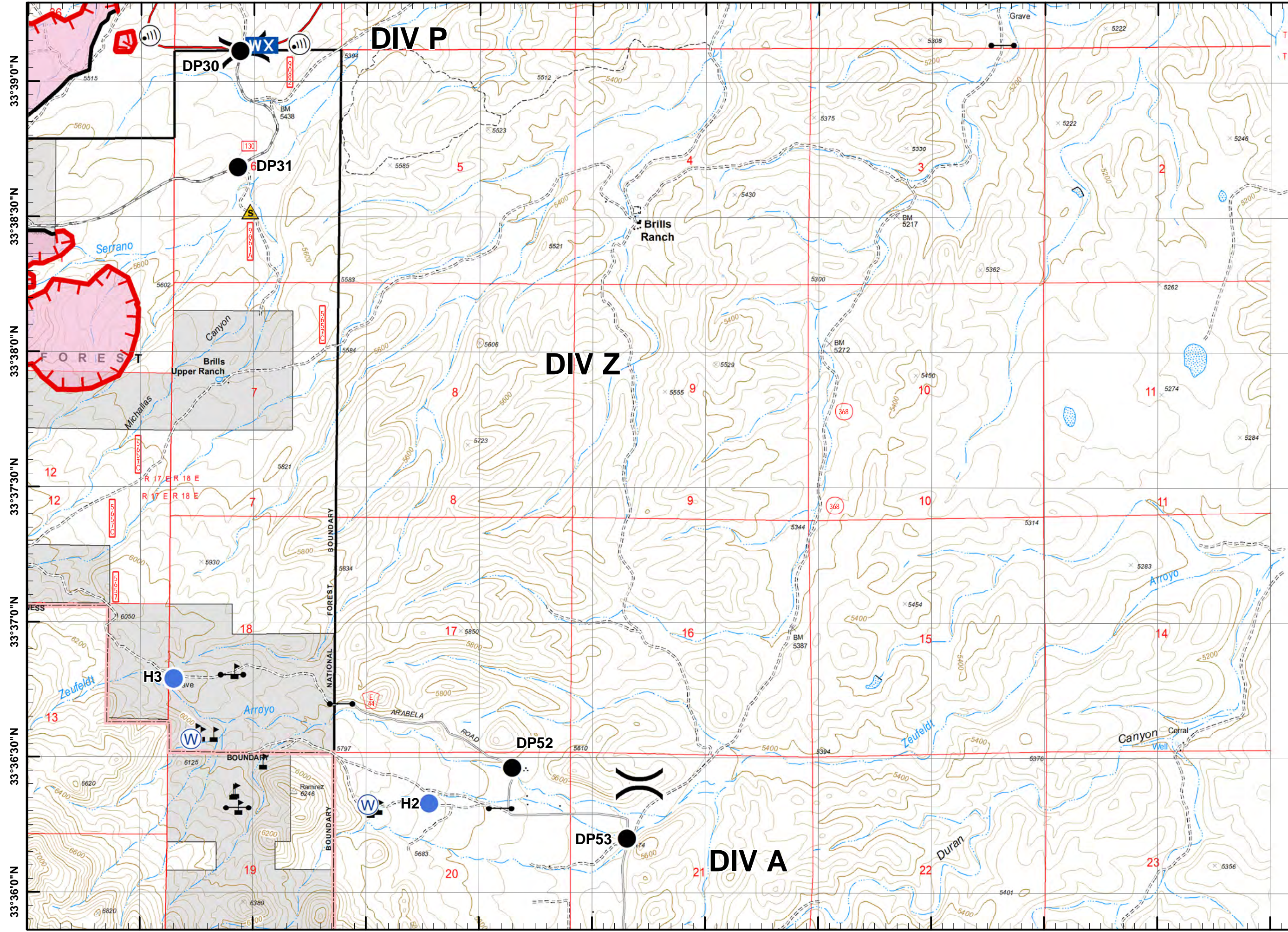
- Aerial Hazard
- Camp
- Dip Site
- Drop Point
- Fire Station
- Gate
- Helispot
- Verizon Service
- Mobile Weather Unit
- Repeater
- Safety Zone
- Water Source
- Value at Risk
- Division Break
- Uncontrolled Fire Edge
- Completed Line
- Completed Dozer Line
- Wildfire Daily Fire Perimeter
- National Forest



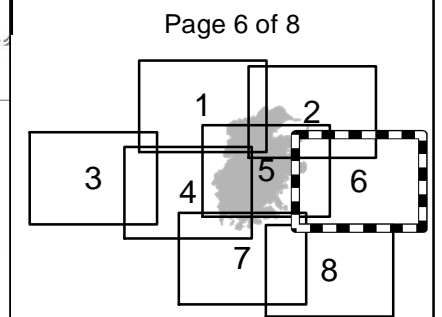
NAD 83 UTM Zone 13N  
SW IMT 5 GIS 6/24/2019 10:32:36 PM

105°17'0"W 105°16'30"W 105°16'0"W 105°15'30"W 105°15'0"W 105°14'30"W 105°14'0"W 105°13'30"W 105°13'0"W 105°12'30"W 105°12'0"W 105°11'30"W

105°13'0"W 105°12'30"W 105°12'0"W 105°11'30"W 105°11'0"W 105°10'30"W 105°10'0"W 105°9'30"W 105°9'0"W 105°8'30"W 105°8'0"W 105°7'30"W



# Pine Lodge IAP NM-LNF-000249 Day Operational Period 6/25/2019



- Aerial Hazard
  - Camp
  - Dip Site
  - Drop Point
  - Fire Station
  - Gate
  - Helispot
  - Verizon Service
  - Mobile Weather Unit
  - Repeater
  - Safety Zone
  - Water Source
  - Value at Risk
  - Division Break
  - Uncontrolled Fire Edge
  - Completed Line
  - Completed Dozer Line
  - Wildfire Daily Fire Perimeter
  - National Forest
- 0 0.25 0.5  
Miles
- NAD 83 UTM Zone 13N  
SW IMT 5 GIS 6/24/2019 10:37:13 PM

33°39'0"N 33°38'30"N 33°38'0"N 33°37'30"N 33°37'0"N 33°36'30"N 33°36'0"N 33°36'0"N 105°12'30"W 105°12'0"W 105°11'30"W 105°11'0"W 105°10'30"W 105°10'0"W 105°9'30"W 105°9'0"W 105°8'30"W 105°8'0"W 105°7'30"W

105°18'0"W 105°17'30"W 105°17'0"W 105°16'30"W 105°16'0"W 105°15'30"W 105°15'0"W 105°14'30"W 105°14'0"W 105°13'30"W 105°13'0"W

33°36'0"N  
33°35'30"N  
33°35'0"N  
33°34'30"N  
33°34'0"N  
33°33'30"N

105°18'0"W 105°17'30"W 105°17'0"W 105°16'30"W 105°16'0"W 105°15'30"W 105°15'0"W 105°14'30"W 105°14'0"W 105°13'30"W 105°13'0"W

# Pine Lodge IAP

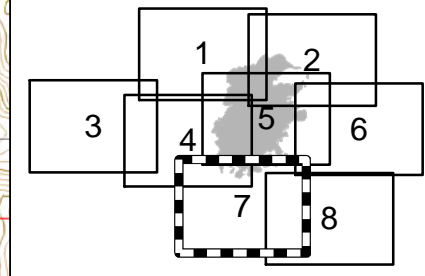
## NM-LNF-000249

### Day Operational Period

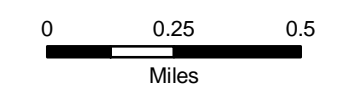
6/25/2019



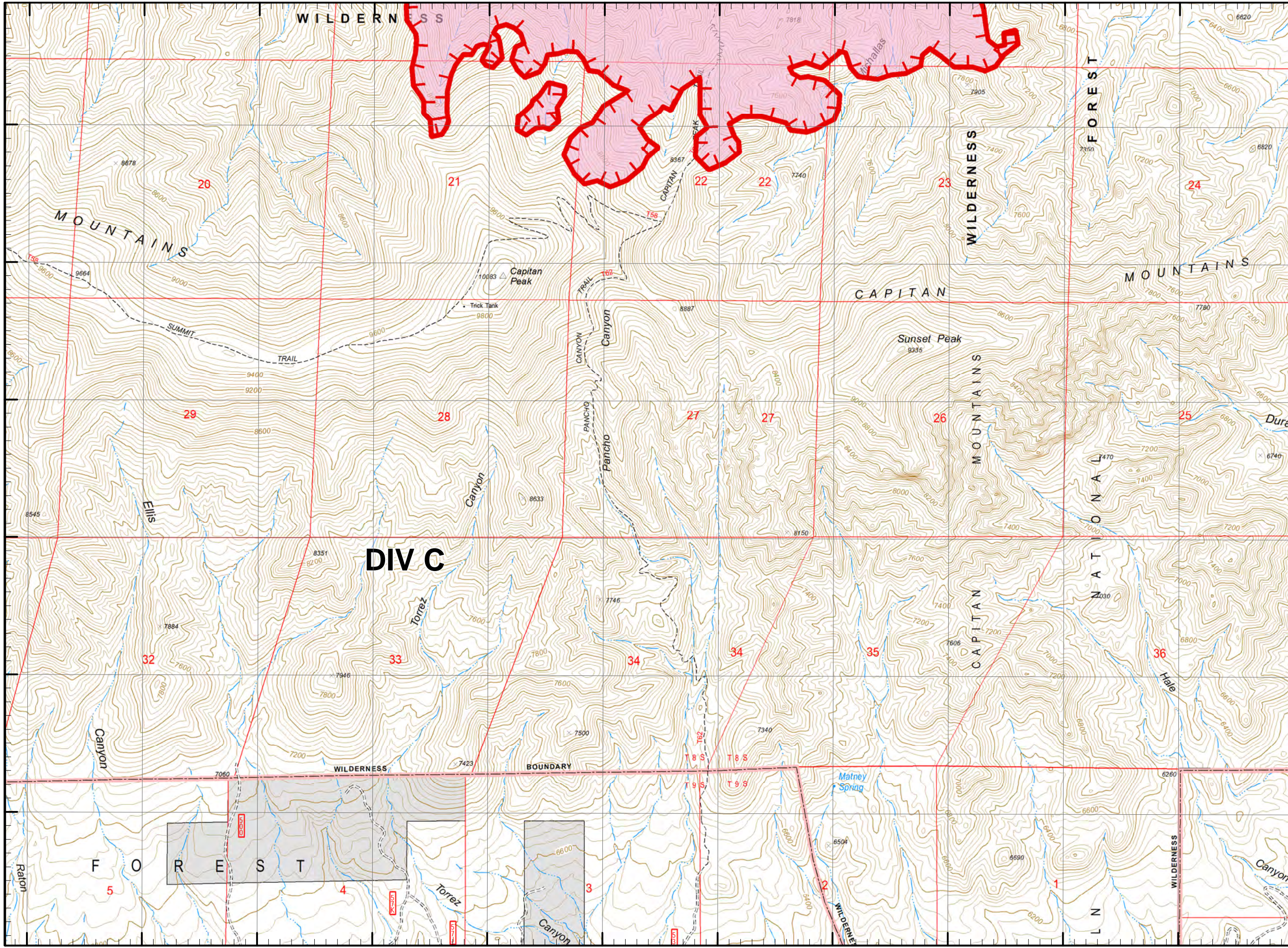
Page 7 of 8



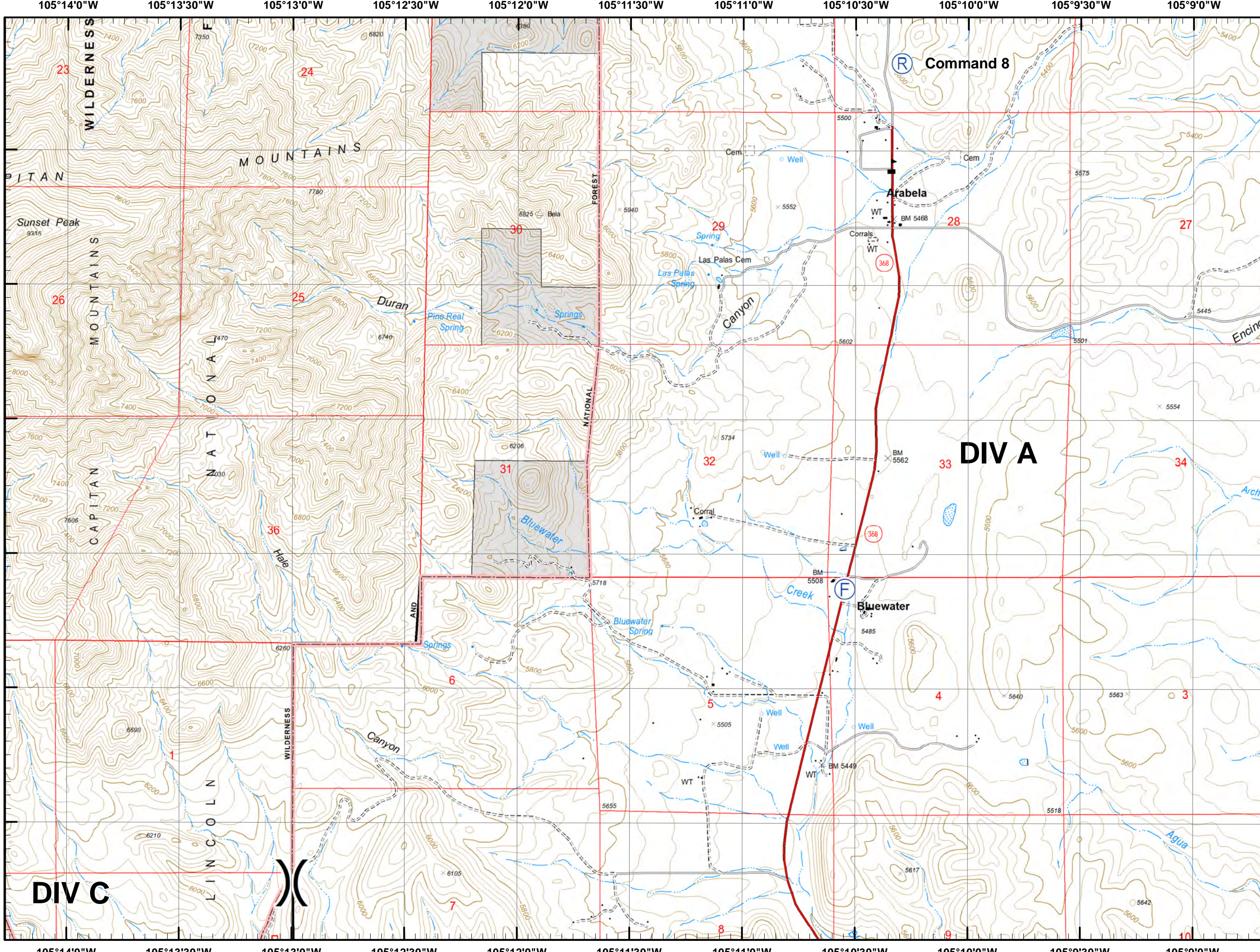
- Aerial Hazard
- Camp
- Dip Site
- Drop Point
- Fire Station
- Gate
- Helispot
- Verizon Service
- Mobile Weather Unit
- Repeater
- Safety Zone
- Water Source
- Value at Risk
- Uncontrolled Fire Edge
- Completed Line
- Completed Dozer Line
- Wildfire Daily Fire Perimeter
- National Forest
- Division Break



NAD 83 UTM Zone 13N  
SW IMT 5 GIS 6/24/2019 10:41:14 PM



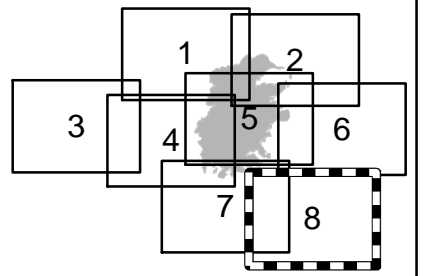




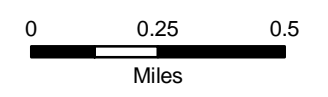
**Pine Lodge IAP**  
**NM-LNF-000249**  
**Day Operational Period**  
**6/25/2019**



Page 8 of 8



- Aerial Hazard
- Camp
- Dip Site
- Drop Point
- Fire Station
- Gate
- Helispot
- Verizon Service
- Mobile Weather Unit
- Repeater
- Safety Zone
- Water Source
- Value at Risk
- Division Break
- Uncontrolled Fire Edge
- Completed Line
- Completed Dozer Line
- Wildfire Daily Fire Perimeter
- National Forest



NAD 83 UTM Zone 13N  
 SW IMT 5 GIS 6/24/2019 10:45:02 PM