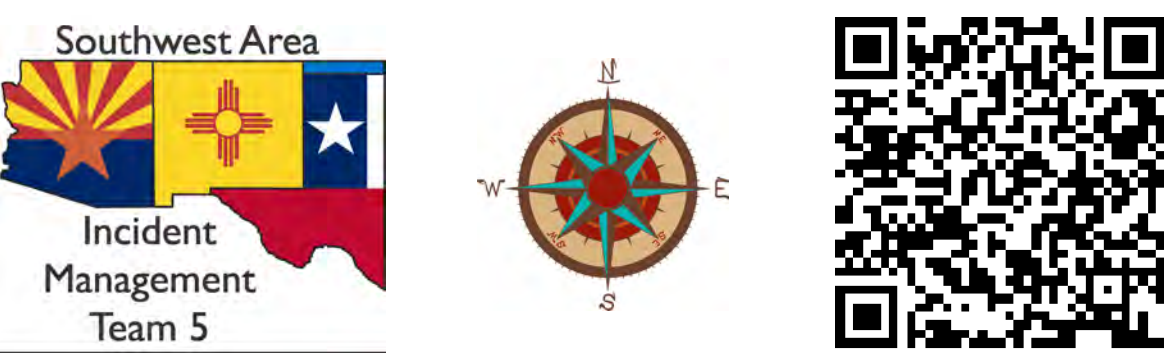


# Pine Lodge Fire NM-LNF-000249

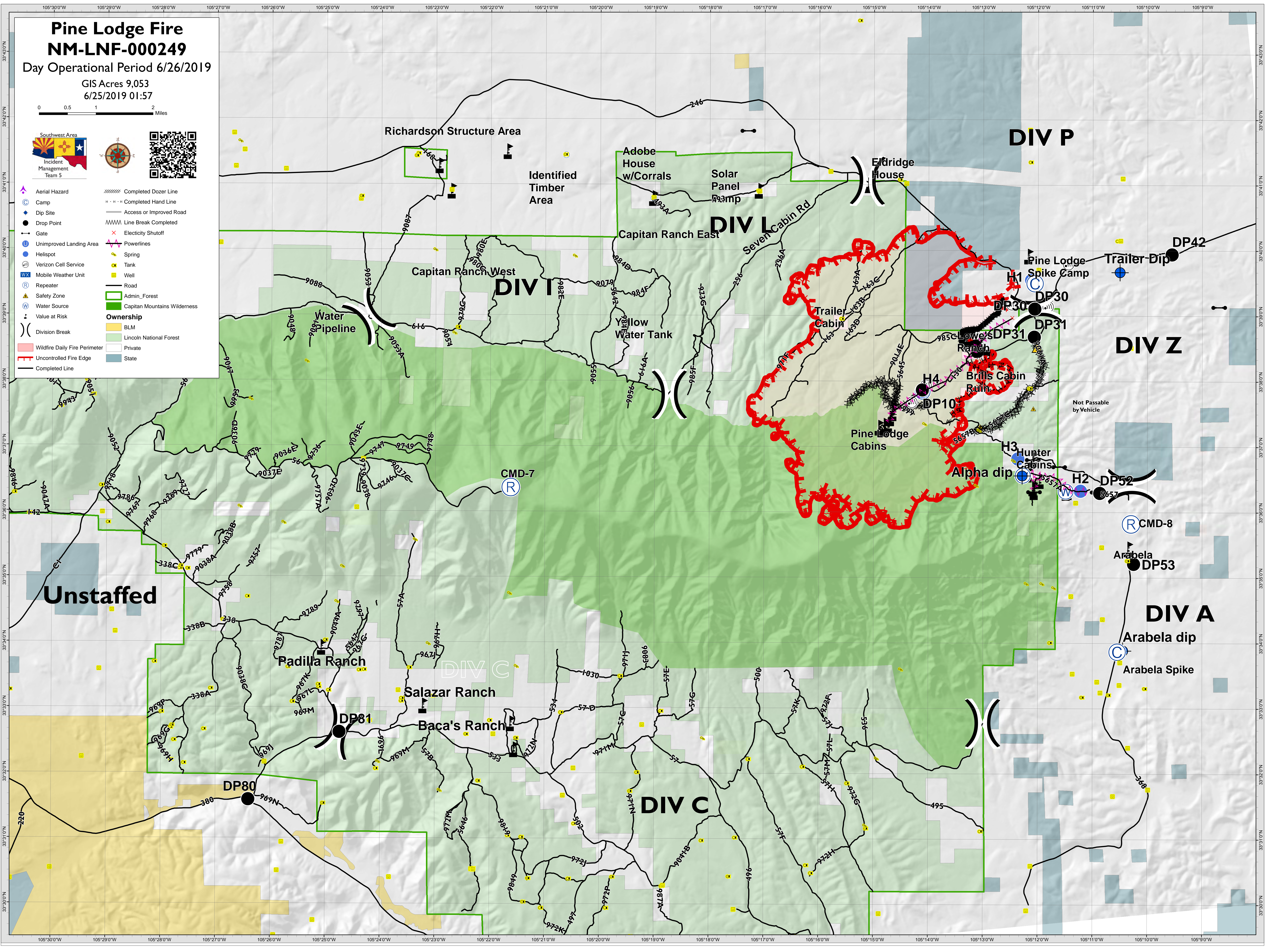
Day Operational Period 6/26/2019

GIS Acres 9,053

6/25/2019 01:57



- Aerial Hazard
  - Camp
  - Dip Site
  - Drop Point
  - Gate
  - Unimproved Landing Area
  - Helispot
  - Verizon Cell Service
  - Mobile Weather Unit
  - Repeater
  - Safety Zone
  - Water Source
  - Value at Risk
  - Division Break
  - Wildfire Daily Fire Perimeter
  - Uncontrolled Fire Edge
  - Completed Line
- Completed Dozer Line
  - Completed Hand Line
  - Access or Improved Road
  - Line Break Completed
  - Electricity Shutoff
  - Powerlines
  - Spring
  - Tank
  - Well
  - Road
  - Admin\_Forest
  - Capitan Mountains Wilderness
  - Ownership
    - BLM
    - Lincoln National Forest
    - Private
    - State



Richardson Structure Area

Identified Timber Area

Adobe House w/Corrals

Solar Panel Array

Eldridge House

DIV P

Capitan Ranch East

Capitan Ranch West

DIV I

Water Pipeline

Yellow Water Tank

Seven Cabin Rd

Trailer Cabin

Pine Lodge Spike Camp

Trailer Dip

DIV Z

Brills Cabin Ruin

Pine Lodge Cabins

Alpha dip

Hunter Cabins

CMD-7

CMD-8

Arabela DP53

Unstaffed

Padilla Ranch

Salazar Ranch

Baca's Ranch

DIV A

Arabela dip

Arabela Spike

DP80

DP81

DIV C

H3

H4

H1

H2

DP30

DP31

DP31

DP52

DP42

DP30

DP31

DP31

DP31

DP31

DP31

DP31

DP31

DP31

DP31

DP31

DP31

DP31

DP31

DP31

DP31

DP31

DP31

DP31

DP31

DP31

DP31

DP31

DP31

DP31