

**Pine Lodge IAP Index
NM-LNF-000249**

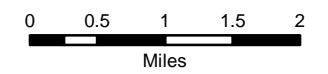
**Day Operational Period
6/27/2019**



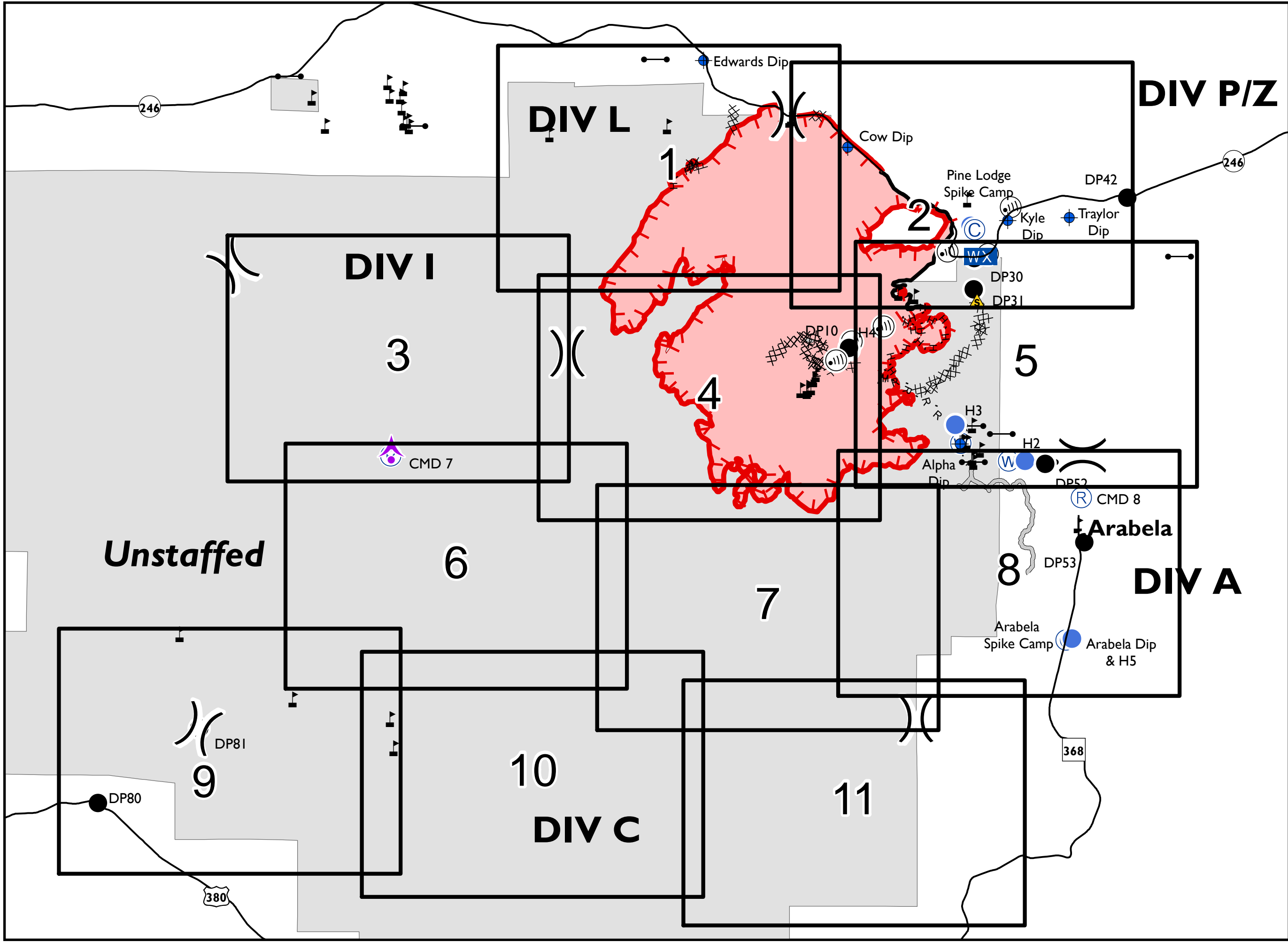
GIS Acres 12,484
6/25/2019 2317

- Aerial Hazard
- Camp
- Dip Site
- Drop Point
- Gate
- Helispot
- Internet Access
- Mobile Weather Unit
- Repeater
- Safety Zone
- Water Source
- Value at Risk
- Division Break

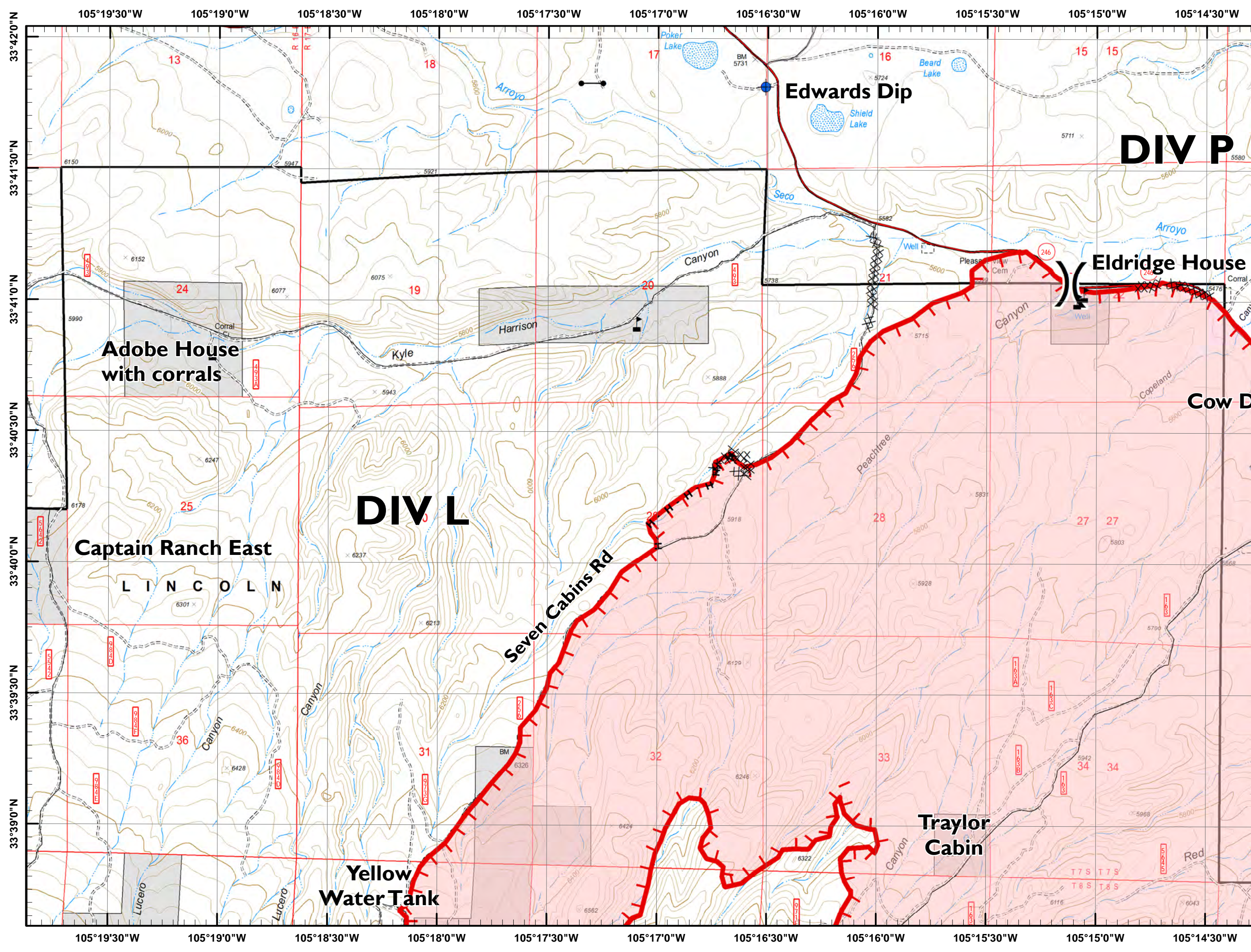
- Uncontrolled Fire Edge
- Completed Line
- Completed Dozer Line
- Completed Hand Line
- Road as Completed Line
- Access or Improved Road
- Wildfire Daily Fire Perimeter
- National Forest



NAD 83 UTM Zone 13N
SW IMT 5 GIS 6/26/2019 9:33:44 PM



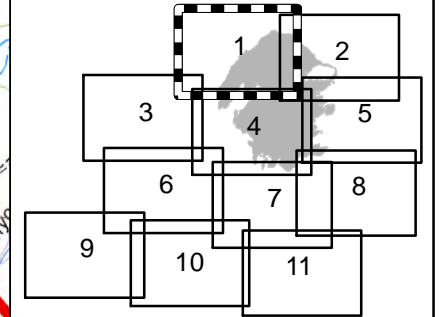
Unstaffed



Pine Lodge IAP
NM-LNF-000249
 Day Operational Period
 6/27/2019

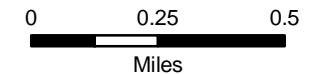


Page 1 of 11



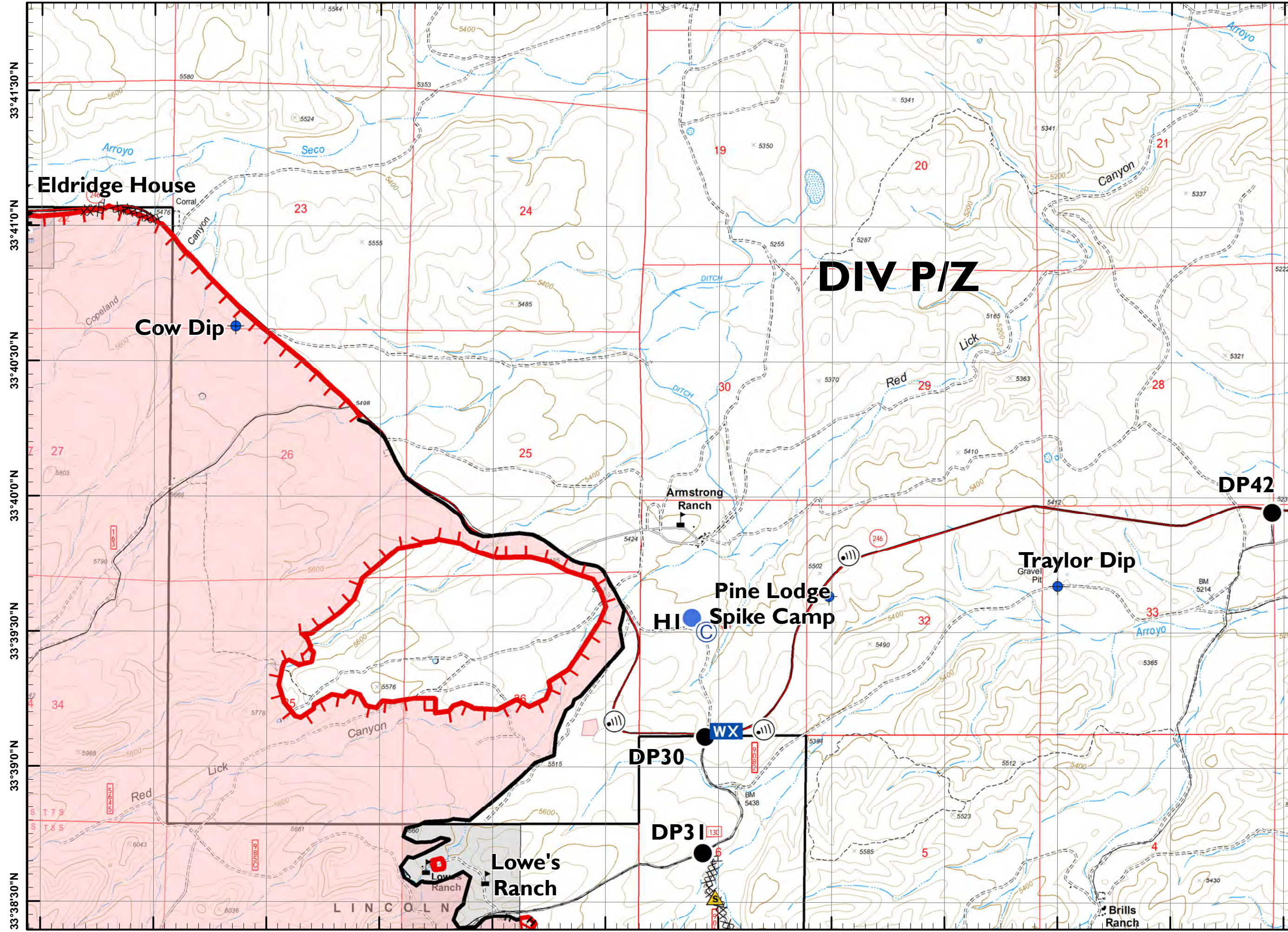
- Aerial Hazard
- Camp
- Dip Site
- Drop Point
- Gate
- Helispot
- Internet Access
- Mobile Weather Unit
- Repeater
- Safety Zone
- Water Source
- Value at Risk
- Division Break

- Uncontrolled Fire Edge
- Completed Line
- Completed Dozer Line
- Completed Hand Line
- Road as Completed Line
- Access or Improved Road
- Wildfire Daily Fire Perimeter



NAD 83 UTM Zone 13N
 SW IMT 5 GIS 6/26/2019 9:27:57 PM

105°15'0"W 105°14'30"W 105°14'0"W 105°13'30"W 105°13'0"W 105°12'30"W 105°12'0"W 105°11'30"W 105°11'0"W 105°10'30"W 105°10'0"W 105°9'30"W



Pine Lodge IAP

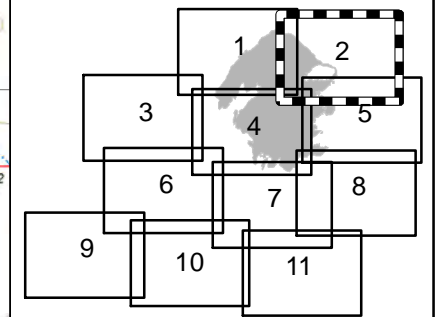
NM-LNF-000249

Day Operational Period

6/27/2019

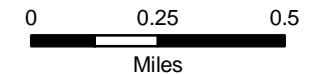


Page 2 of 11



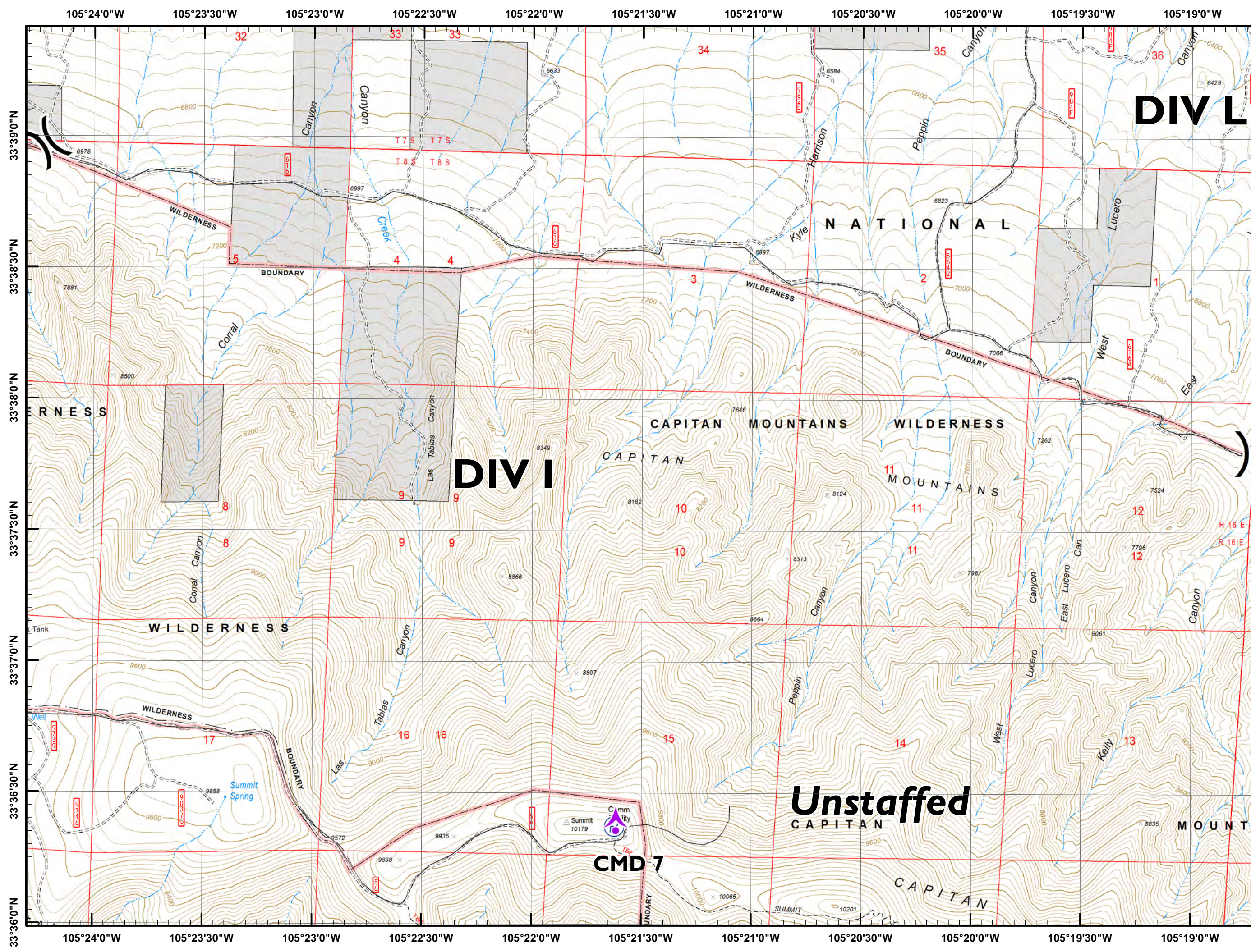
- Aerial Hazard
- Camp
- Dip Site
- Drop Point
- Gate
- Helispot
- Internet Access
- Mobile Weather Unit
- Repeater
- Safety Zone
- Water Source
- Value at Risk
- Division Break

- Uncontrolled Fire Edge
- Completed Line
- Completed Dozer Line
- Completed Hand Line
- Road as Completed Line
- Access or Improved Road
- Wildfire Daily Fire Perimeter



NAD 83 UTM Zone 13N
SW IMT 5 GIS 6/26/2019 9:31:01 PM

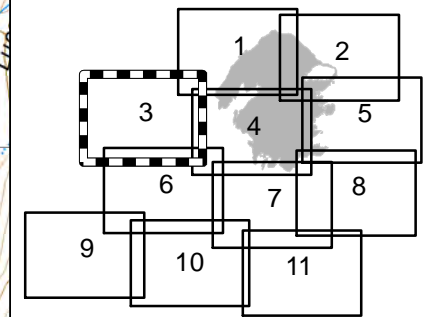
105°15'0"W 105°14'30"W 105°14'0"W 105°13'30"W 105°13'0"W 105°12'30"W 105°12'0"W 105°11'30"W 105°11'0"W 105°10'30"W 105°10'0"W 105°9'30"W



Pine Lodge IAP
NM-LNF-000249
Day Operational Period
6/27/2019



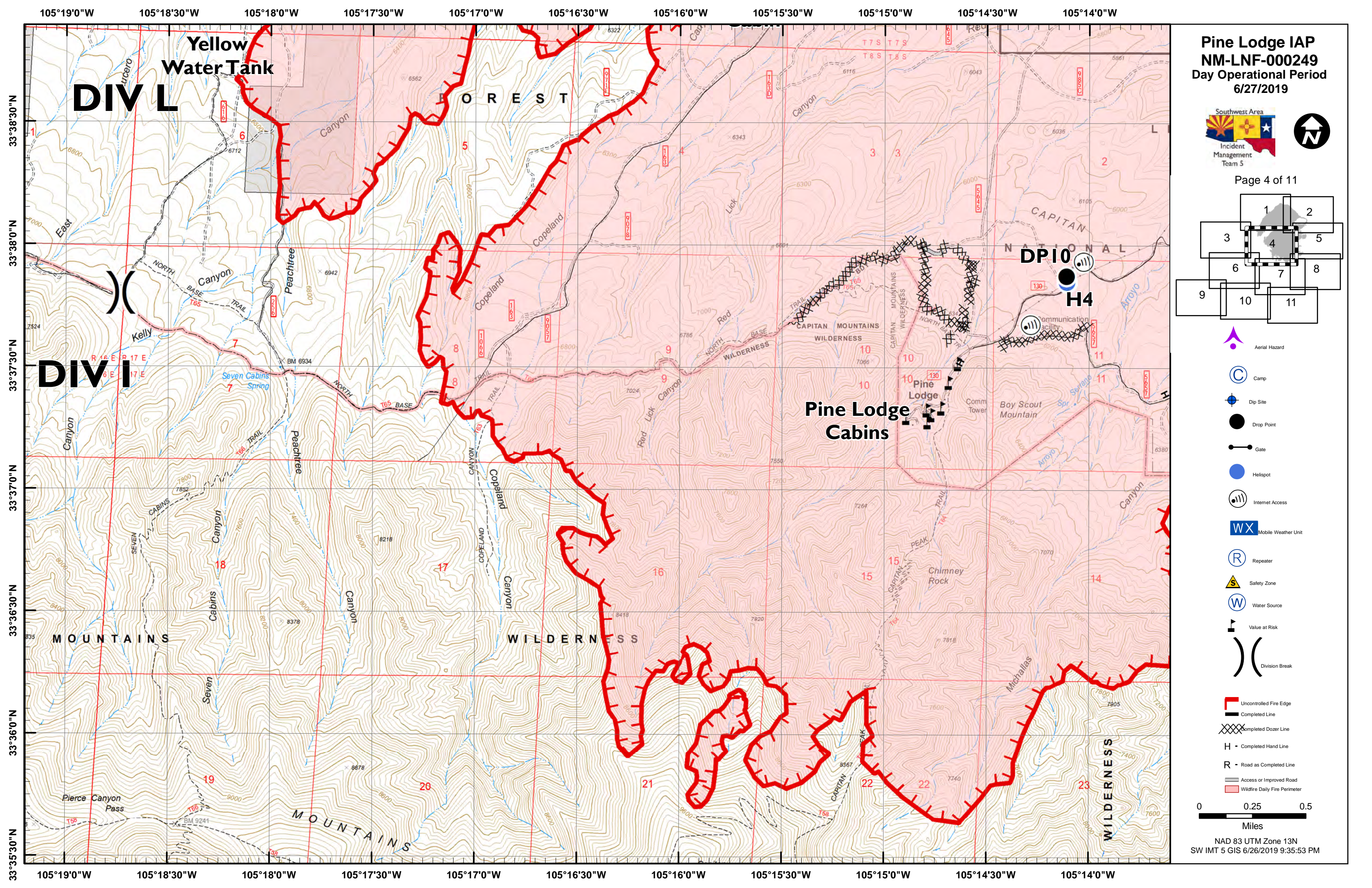
Page 3 of 11



- Aerial Hazard
- Camp
- Dip Site
- Drop Point
- Gate
- Helispot
- Internet Access
- Mobile Weather Unit
- Repeater
- Safety Zone
- Water Source
- Value at Risk
- Division Break
- Uncontrolled Fire Edge
- Completed Line
- Completed Dozer Line
- Completed Hand Line
- Road as Completed Line
- Access or Improved Road
- Wildfire Daily Fire Perimeter

0 0.25 0.5
 Miles

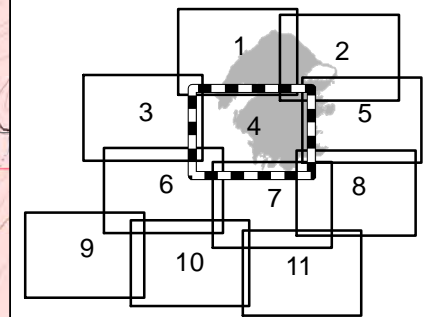
NAD 83 UTM Zone 13N
 SW IMT 5 GIS 6/26/2019 9:33:33 PM



Pine Lodge IAP NM-LNF-000249 Day Operational Period 6/27/2019

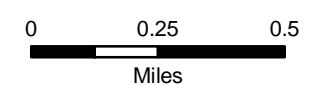


Page 4 of 11



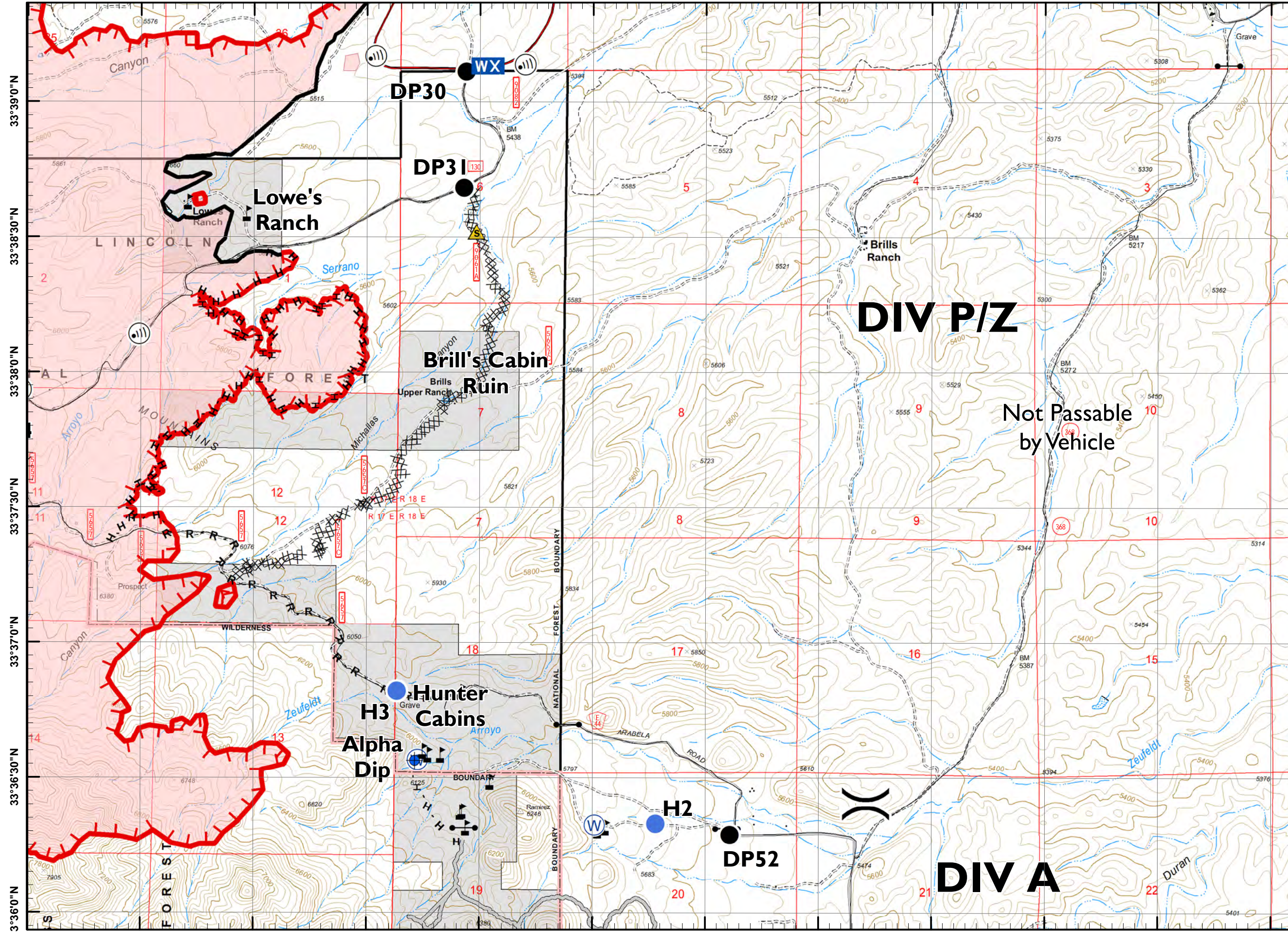
- Aerial Hazard
- Camp
- Dip Site
- Drop Point
- Gate
- Helispot
- Internet Access
- Mobile Weather Unit
- Repeater
- Safety Zone
- Water Source
- Value at Risk
- Division Break

- Uncontrolled Fire Edge
- Completed Line
- Completed Dozer Line
- Completed Hand Line
- Road as Completed Line
- Access or Improved Road
- Wildfire Daily Fire Perimeter



NAD 83 UTM Zone 13N
SW IMT 5 GIS 6/26/2019 9:35:53 PM

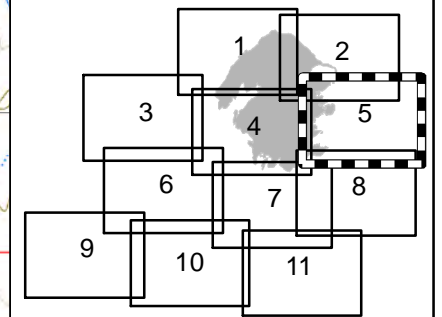
105°14'0"W 105°13'30"W 105°13'0"W 105°12'30"W 105°12'0"W 105°11'30"W 105°11'0"W 105°10'30"W 105°10'0"W 105°9'30"W 105°9'0"W 105°8'30"W



Pine Lodge IAP NM-LNF-000249 Day Operational Period 6/27/2019

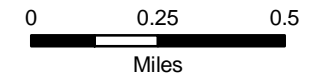


Page 5 of 11



- Aerial Hazard
- Camp
- Dip Site
- Drop Point
- Gate
- Helispot
- Internet Access
- Mobile Weather Unit
- Repeater
- Safety Zone
- Water Source
- Value at Risk
- Division Break

- Uncontrolled Fire Edge
- Completed Line
- Completed Dozer Line
- Completed Hand Line
- Road as Completed Line
- Access or Improved Road
- Wildfire Daily Fire Perimeter



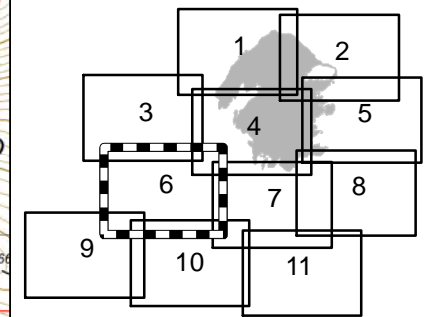
NAD 83 UTM Zone 13N
SW IMT 5 GIS 6/26/2019 9:38:11 PM

105°13'30"W 105°13'0"W 105°12'30"W 105°12'0"W 105°11'30"W 105°11'0"W 105°10'30"W 105°10'0"W 105°9'30"W 105°9'0"W 105°8'30"W

Pine Lodge IAP
NM-LNF-000249
Day Operational Period
6/27/2019

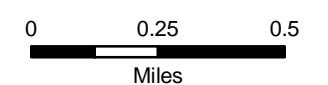


Page 6 of 11

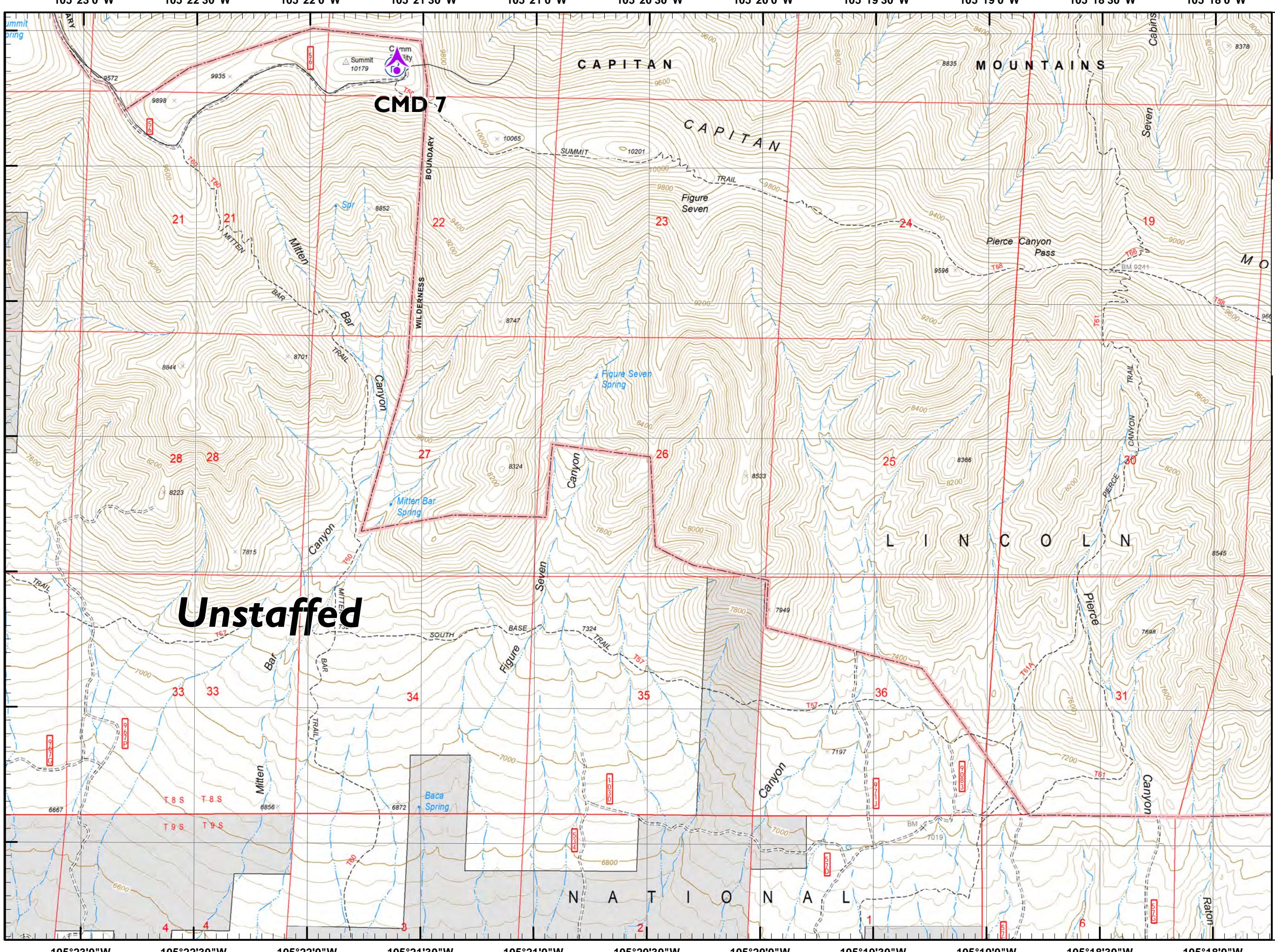


- Aerial Hazard
- Camp
- Dip Site
- Drop Point
- Gate
- Helispot
- Internet Access
- Mobile Weather Unit
- Repeater
- Safety Zone
- Water Source
- Value at Risk
- Division Break

- Uncontrolled Fire Edge
- Completed Line
- Completed Dozer Line
- Completed Hand Line
- Road as Completed Line
- Access or Improved Road
- Wildfire Daily Fire Perimeter



NAD 83 UTM Zone 13N
 SW IMT 5 GIS 6/26/2019 9:41:30 PM



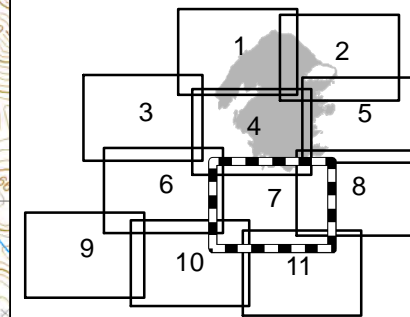
Unstaffed




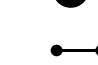









CMD 7


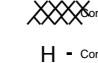
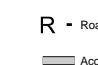

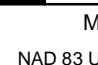
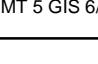

Pine Lodge IAP
NM-LNF-000249
Day Operational Period
6/27/2019

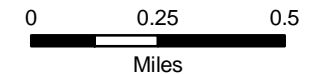


Page 7 of 11

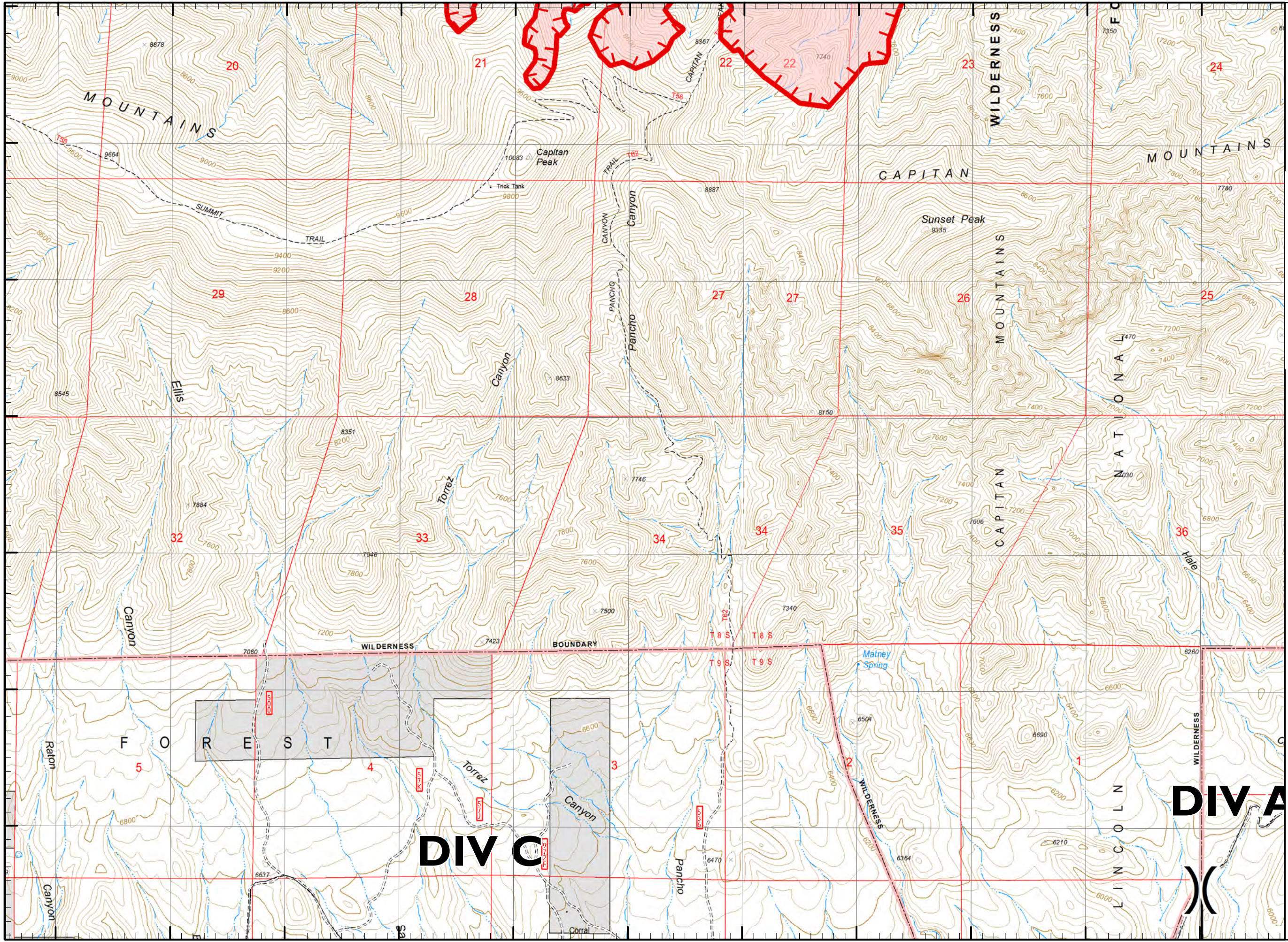


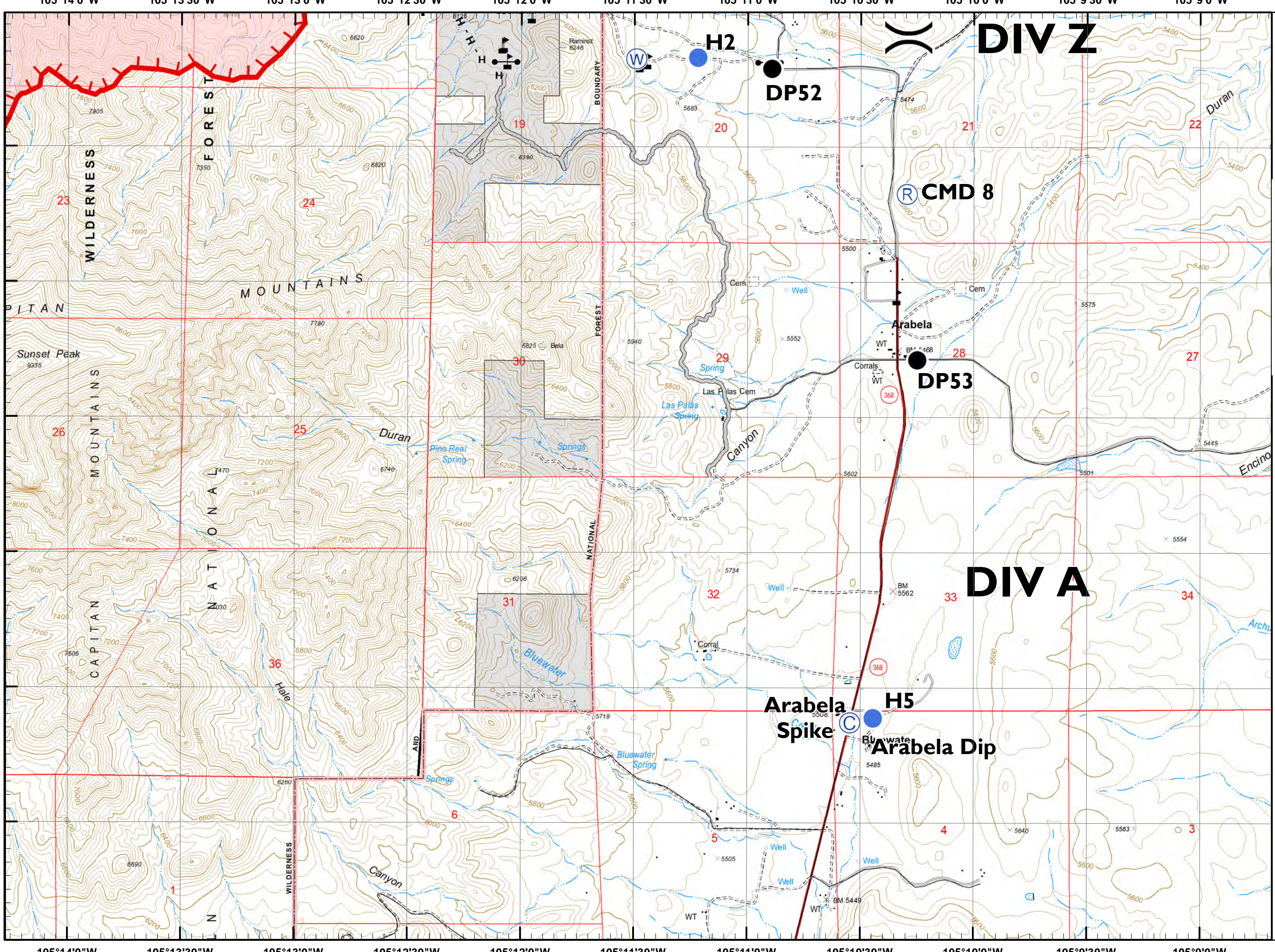
-  Aerial Hazard
-  Camp
-  Dip Site
-  Drop Point
-  Gate
-  Helispot
-  Internet Access
-  Mobile Weather Unit
-  Repeater
-  Safety Zone
-  Water Source
-  Value at Risk
-  Division Break

-  Uncontrolled Fire Edge
-  Completed Line
-  Completed Dozer Line
-  Completed Hand Line
-  Road as Completed Line
-  Access or Improved Road
-  Wildfire Daily Fire Perimeter



NAD 83 UTM Zone 13N
 SW IMT 5 GIS 6/26/2019 9:43:40 PM

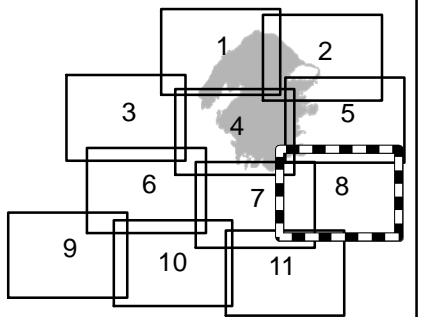




Pine Lodge IAP
NM-LNF-000249
Day Operational Period
6/27/2019

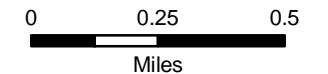


Page 8 of 11



- Aerial Hazard
- Camp
- Dip Site
- Drop Point
- Gate
- Helispot
- Internet Access
- Mobile Weather Unit
- Repeater
- Safety Zone
- Water Source
- Value at Risk
- Division Break

- Uncontrolled Fire Edge
- Completed Line
- Completed Dozer Line
- Completed Hand Line
- Road as Completed Line
- Access or Improved Road
- Wildfire Daily Fire Perimeter



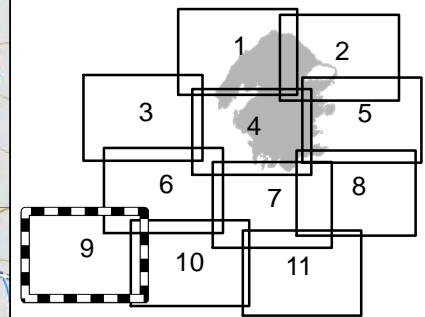
NAD 83 UTM Zone 13N
 SW IMT 5 GIS 6/26/2019 9:45:50 PM

105°27'0"W 105°26'30"W 105°26'0"W 105°25'30"W 105°25'0"W 105°24'30"W 105°24'0"W 105°23'30"W 105°23'0"W 105°22'30"W 105°22'0"W 105°21'30"W

Pine Lodge IAP NM-LNF-000249 Day Operational Period 6/27/2019



Page 9 of 11



Unstaffed

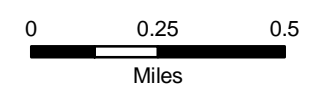
DP81

DIV C

DP80 Double Crossing

33°33'30"N
33°33'0"N
33°32'30"N
33°32'0"N
33°31'30"N
33°31'0"N

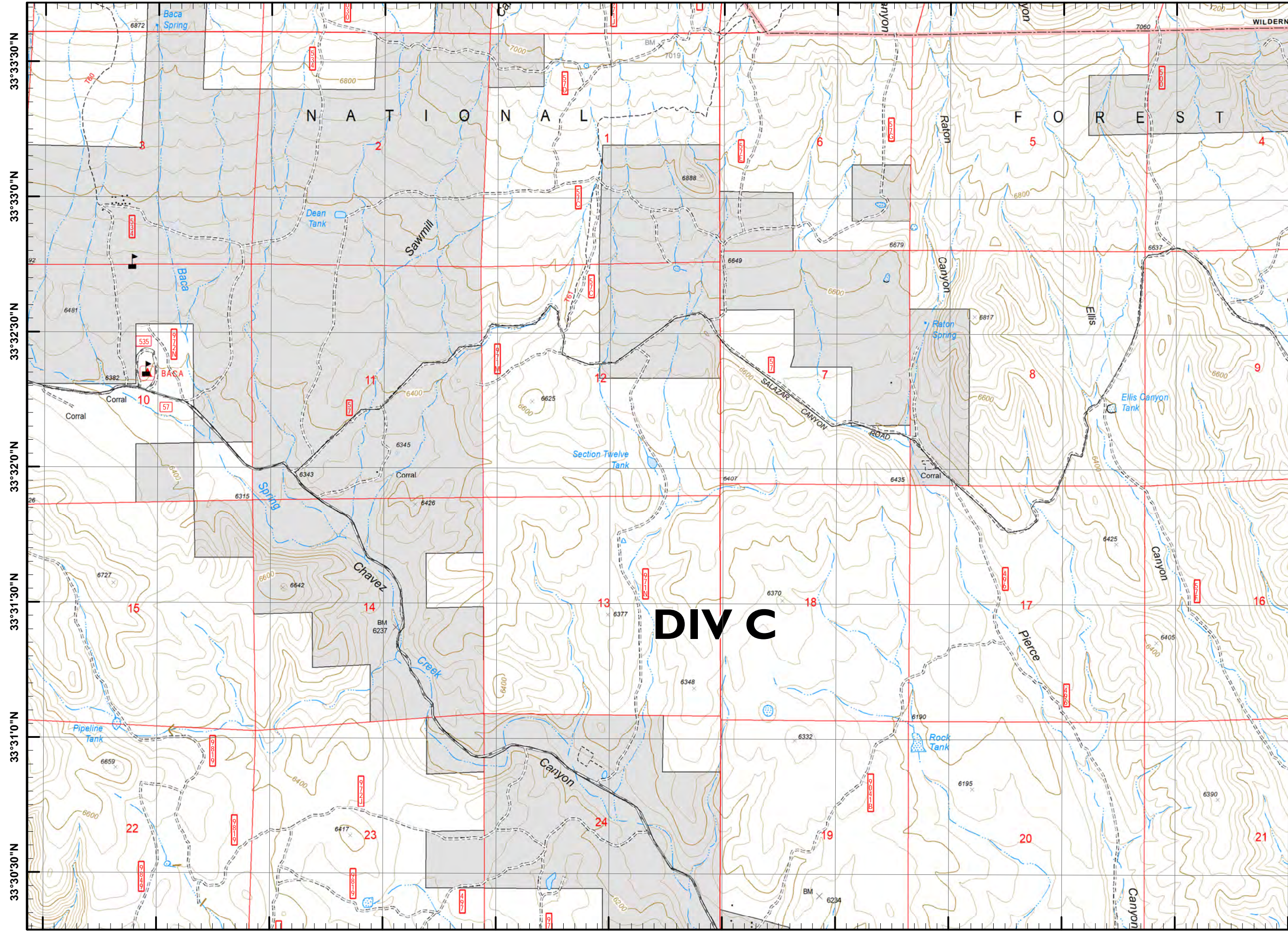
- Aerial Hazard
- Camp
- Dip Site
- Drop Point
- Gate
- Helispot
- Internet Access
- Mobile Weather Unit
- Repeater
- Safety Zone
- Water Source
- Value at Risk
- Division Break
- Uncontrolled Fire Edge
- Completed Line
- Completed Dozer Line
- Completed Hand Line
- Road as Completed Line
- Access or Improved Road
- Wildfire Daily Fire Perimeter



NAD 83 UTM Zone 13N
SW IMT 5 GIS 6/26/2019 9:47:59 PM

105°27'0"W 105°26'30"W 105°26'0"W 105°25'30"W 105°25'0"W 105°24'30"W 105°24'0"W 105°23'30"W 105°23'0"W 105°22'30"W 105°22'0"W 105°21'30"W

105°22'0"W 105°21'30"W 105°21'0"W 105°20'30"W 105°20'0"W 105°19'30"W 105°19'0"W 105°18'30"W 105°18'0"W 105°17'30"W 105°17'0"W 105°16'30"W



Pine Lodge IAP

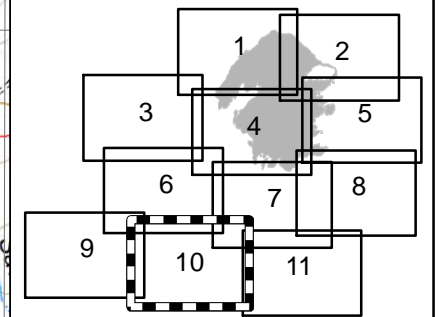
NM-LNF-000249

Day Operational Period

6/27/2019

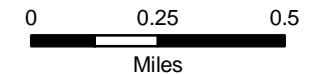


Page 10 of 11



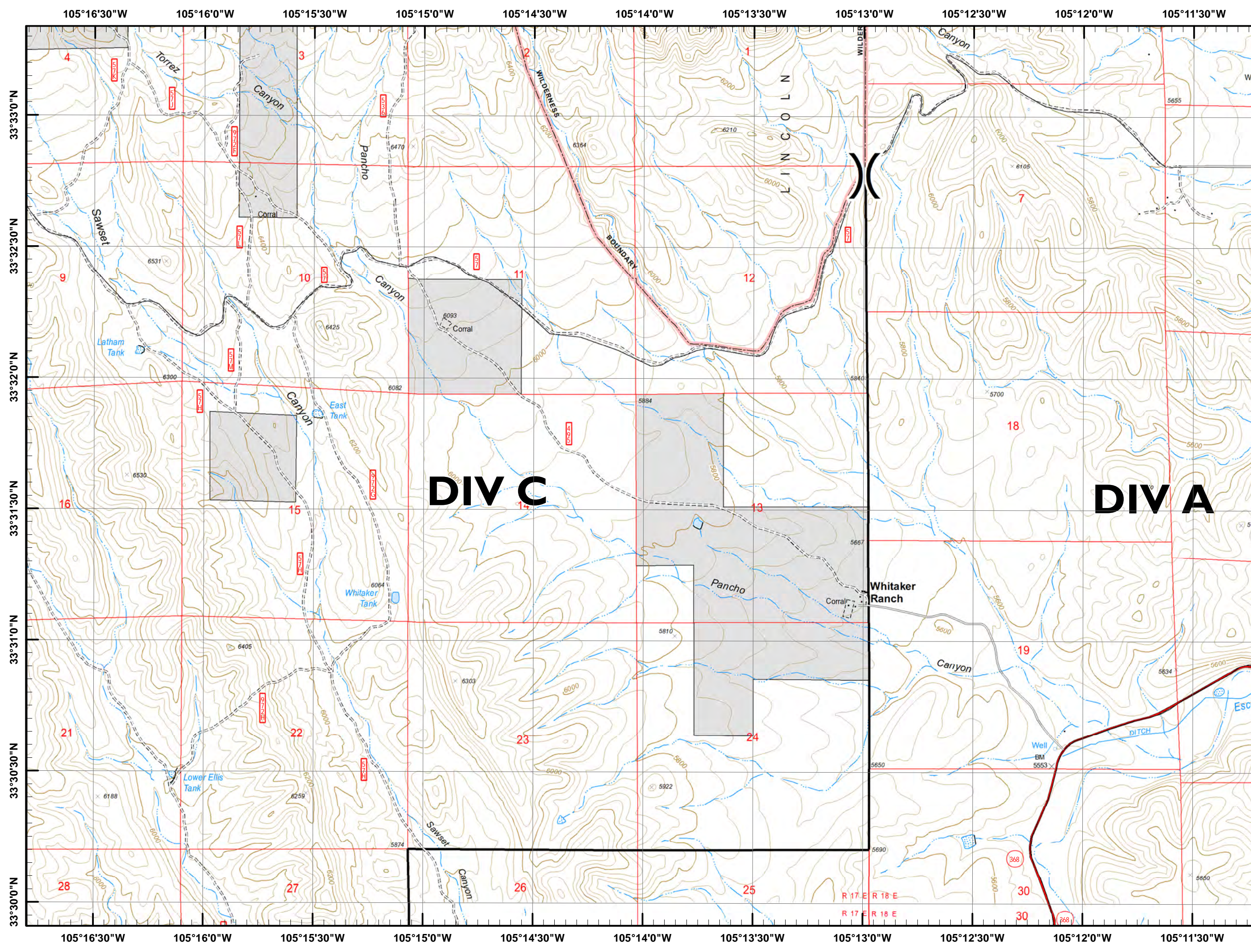
- Aerial Hazard
- Camp
- Dip Site
- Drop Point
- Gate
- Helispot
- Internet Access
- Mobile Weather Unit
- Repeater
- Safety Zone
- Water Source
- Value at Risk
- Division Break

- Uncontrolled Fire Edge
- Completed Line
- Completed Dozer Line
- Completed Hand Line
- Road as Completed Line
- Access or Improved Road
- Wildfire Daily Fire Perimeter



NAD 83 UTM Zone 13N
SW IMT 5 GIS 6/26/2019 9:50:12 PM

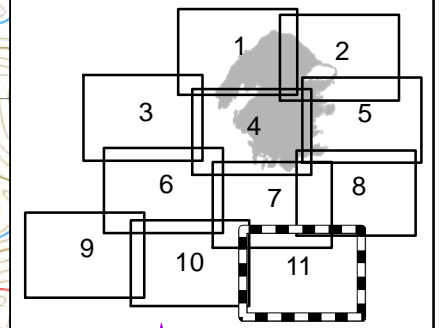
105°22'0"W 105°21'30"W 105°21'0"W 105°20'30"W 105°20'0"W 105°19'30"W 105°19'0"W 105°18'30"W 105°18'0"W 105°17'30"W 105°17'0"W 105°16'30"W



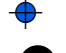











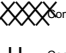


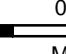
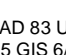
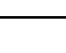


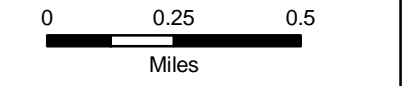
Pine Lodge IAP
NM-LNF-000249
Day Operational Period
6/27/2019



Page 11 of 11



-  Aerial Hazard
-  Camp
-  Dip Site
-  Drop Point
-  Gate
-  Helispot
-  Internet Access
-  Mobile Weather Unit
-  Repeater
-  Safety Zone
-  Water Source
-  Value at Risk
-  Division Break
-  Uncontrolled Fire Edge
-  Completed Line
-  Completed Dozer Line
-  Completed Hand Line
-  Road as Completed Line
-  Access or Improved Road
-  Wildfire Daily Fire Perimeter



NAD 83 UTM Zone 13N
 SW IMT 5 GIS 6/26/2019 9:52:35 PM