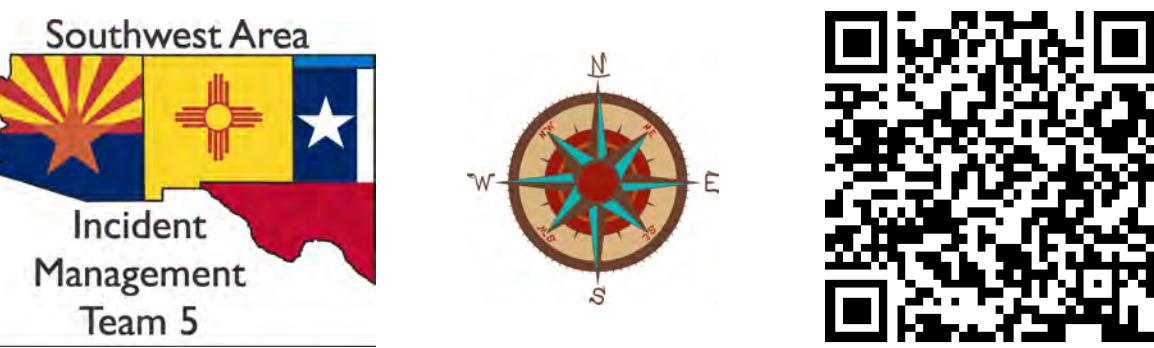
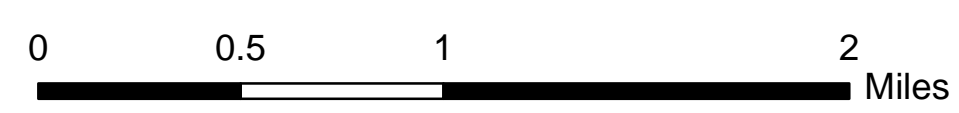


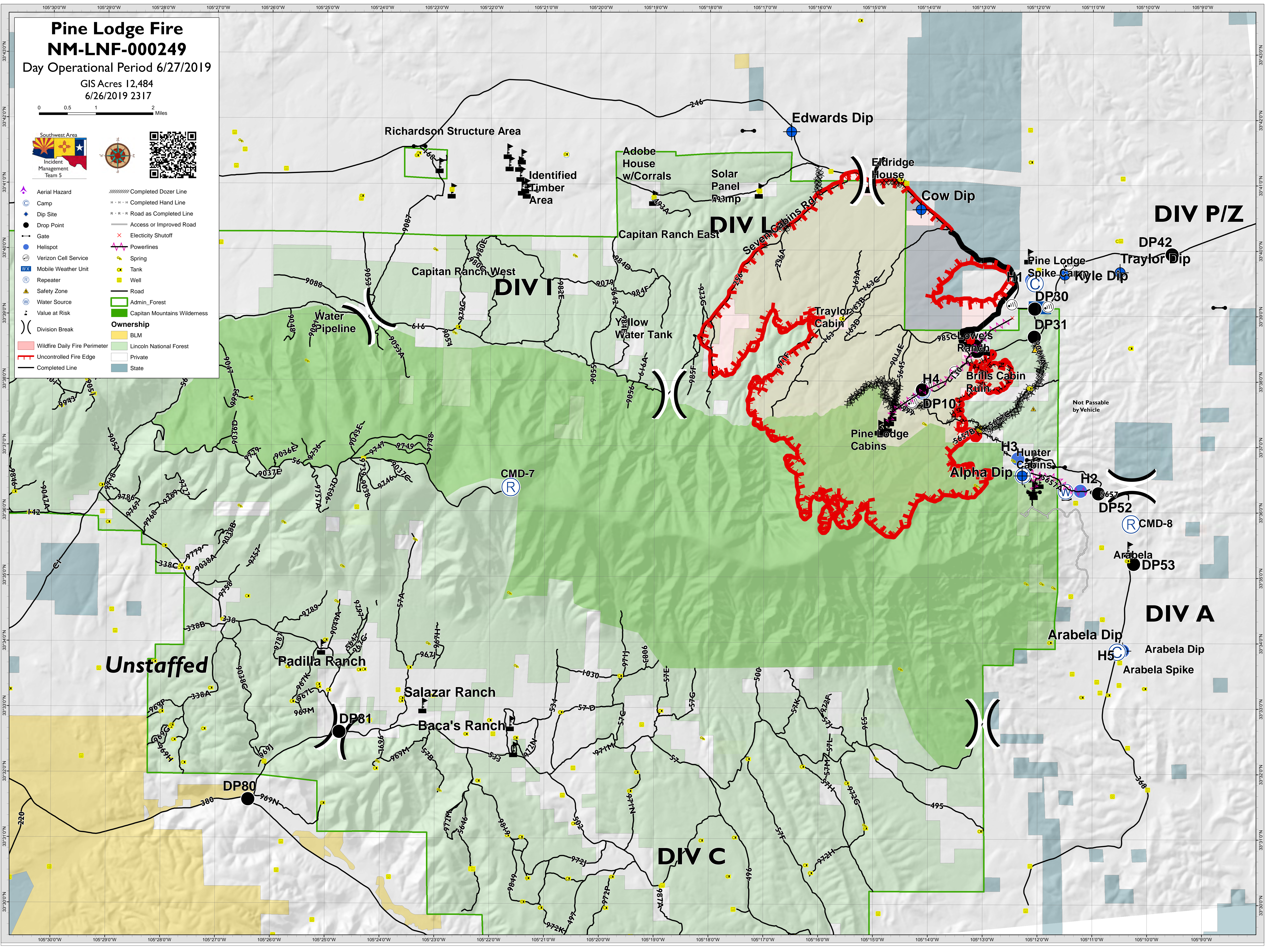
# Pine Lodge Fire NM-LNF-000249

Day Operational Period 6/27/2019

GIS Acres 12,484  
6/26/2019 2317



- Aerial Hazard
- Camp
- Dip Site
- Drop Point
- Gate
- Helispot
- Verizon Cell Service
- Mobile Weather Unit
- Repeater
- Safety Zone
- Water Source
- Value at Risk
- Division Break
- Wildfire Daily Fire Perimeter
- Uncontrolled Fire Edge
- Completed Line
- Completed Dozer Line
- Completed Hand Line
- Road as Completed Line
- Access or Improved Road
- Electricity Shutoff
- Powerlines
- Spring
- Tank
- Well
- Road
- Admin\_Forest
- Capitan Mountains Wilderness
- Ownership
  - BLM
  - Lincoln National Forest
  - Private
  - State



**Unstaffed**

**DIV C**

**DIV I**

**DIV L**

**DIV P/Z**

**DIV A**

Edwards Dip

Cow Dip

DP42

Traylor Dip

Pine Lodge Spike

Kyle Dip

DP30

DP31

H4

DP10

Alpha Dip

H3

Hunter Cabins

H2

DP52

CMD-8

Arabela DP53

Arabela Dip

H5

Arabela Dip

Arabela Spike

Padilla Ranch

Salazar Ranch

Baca's Ranch

DP80

DP81

Adobe House w/Corrals

Solar Panel Array

Eldridge House

Capitan Ranch East

Capitan Ranch West

Yellow Water Tank

Traylor Cabin

Brills Cabin Ruin

Pine Lodge Cabins

CMD-7

Richardson Structure Area

Identified Timber Area

Water Pipeline

Not Passable by Vehicle