

Pine Lodge IAP Index
NM-LNF-000249

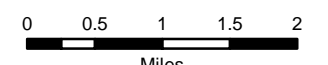
Day Operational Period
6/29/2019



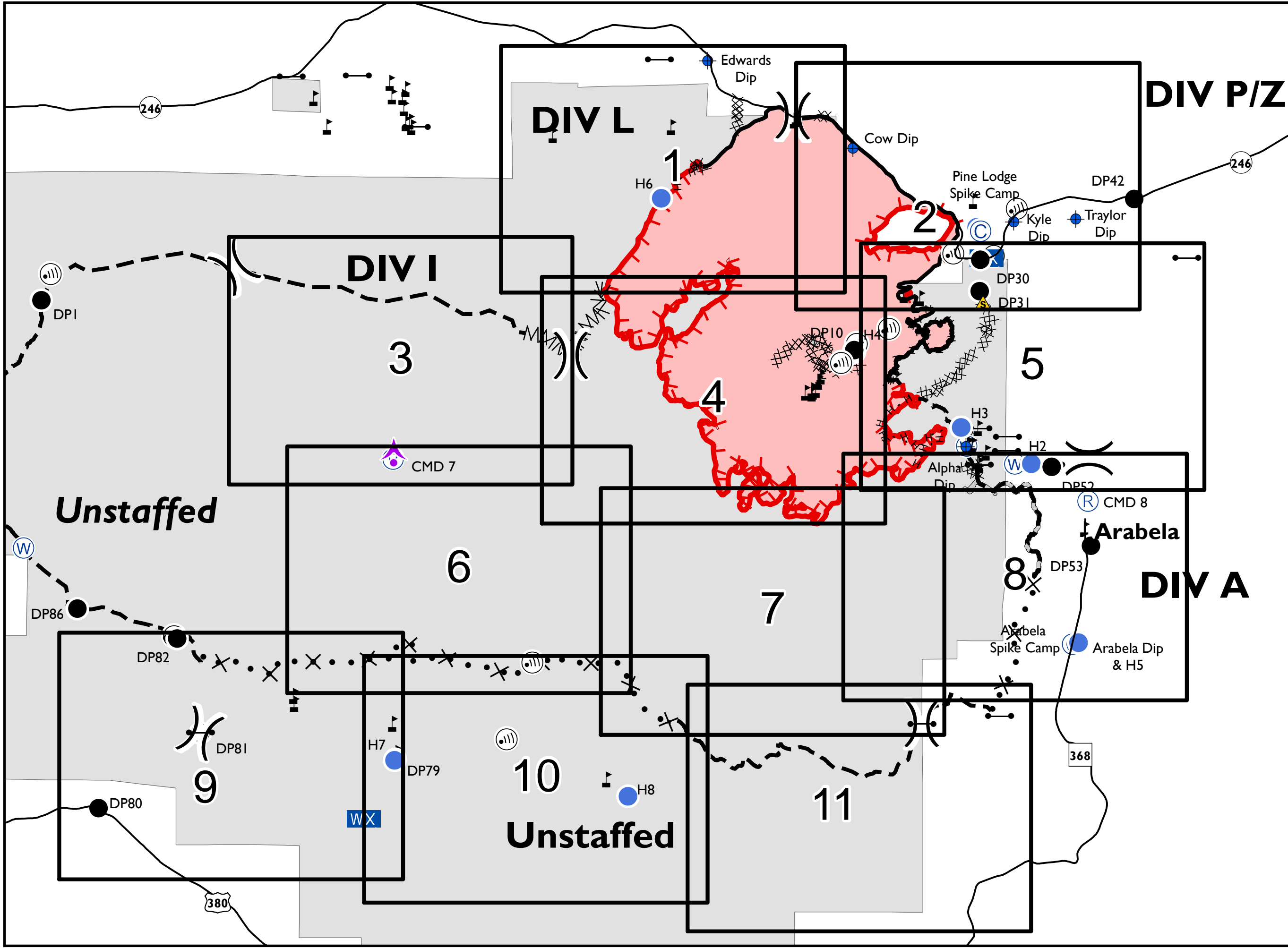
GIS Acres 12,828
6/27/2019 0300

- Aerial Hazard
- Camp
- Dip Site
- Drop Point
- Gate
- Helispot
- Internet Access
- Mobile Weather Unit
- Repeater
- Safety Zone
- Water Source
- Value at Risk
- Division Break

- Uncontrolled Fire Edge
- Completed Line
- Completed Dozer Line
- Completed Hand Line
- Road as Completed Line
- Access or Improved Road
- Line Break Completed
- Proposed Dozer Line
- Planned Fire Line
- Wildfire Daily Fire Perimeter
- National Forest



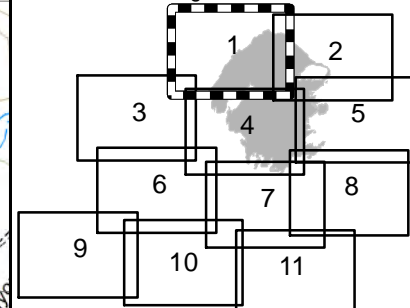
NAD 83 UTM Zone 13N
SW IMT 5 GIS 6/28/2019 8:03:29 PM



Pine Lodge IAP
NM-LNF-000249
Day Operational Period
6/29/2019

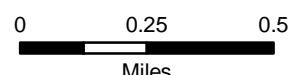


Page 1 of 11

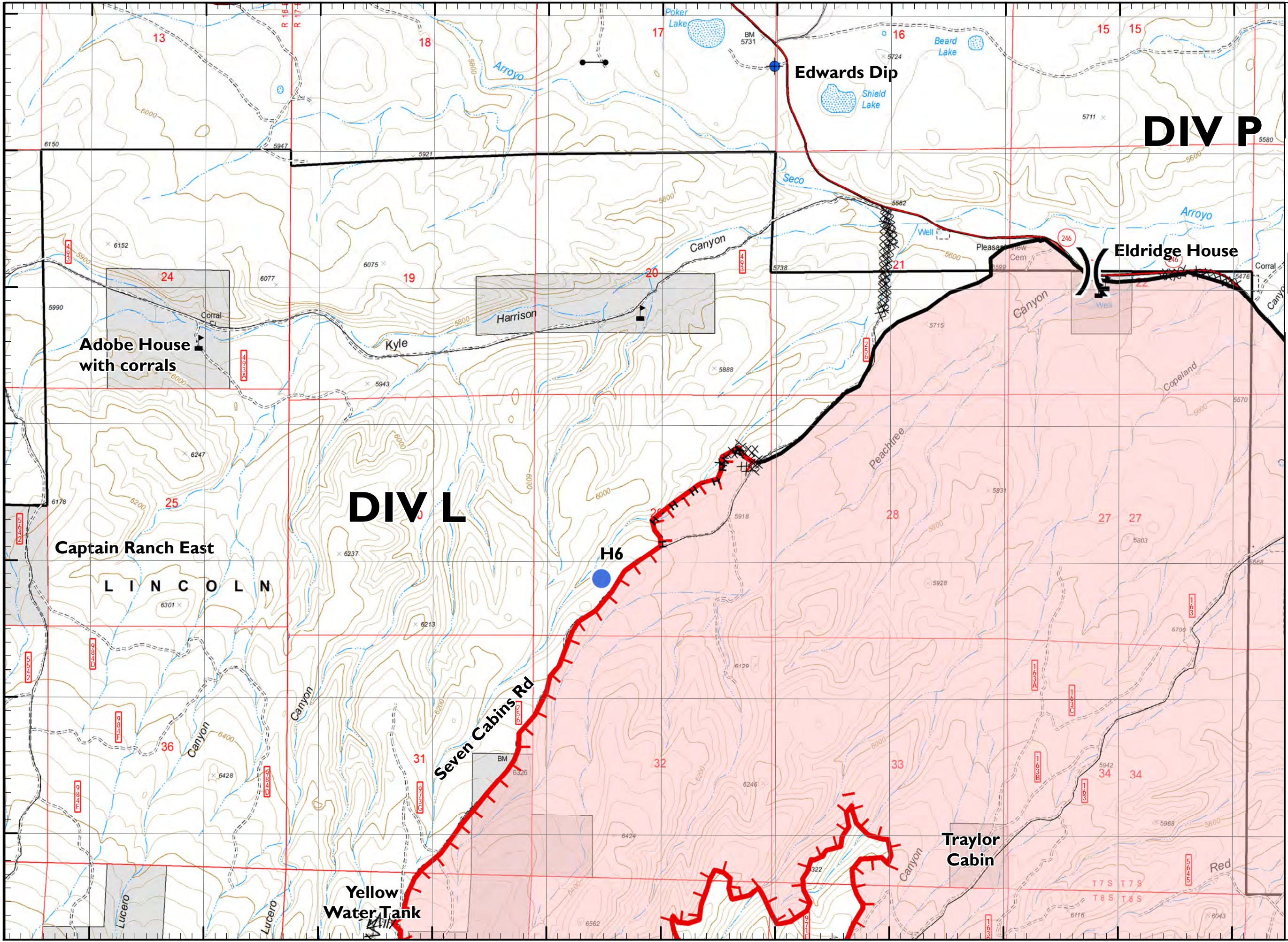


- Aerial Hazard
- Camp
- Dip Site
- Drop Point
- Gate
- Hellspot
- Internet Access
- Mobile Weather Unit
- Repeater
- Safety Zone
- Water Source
- Value at Risk
- Division Break

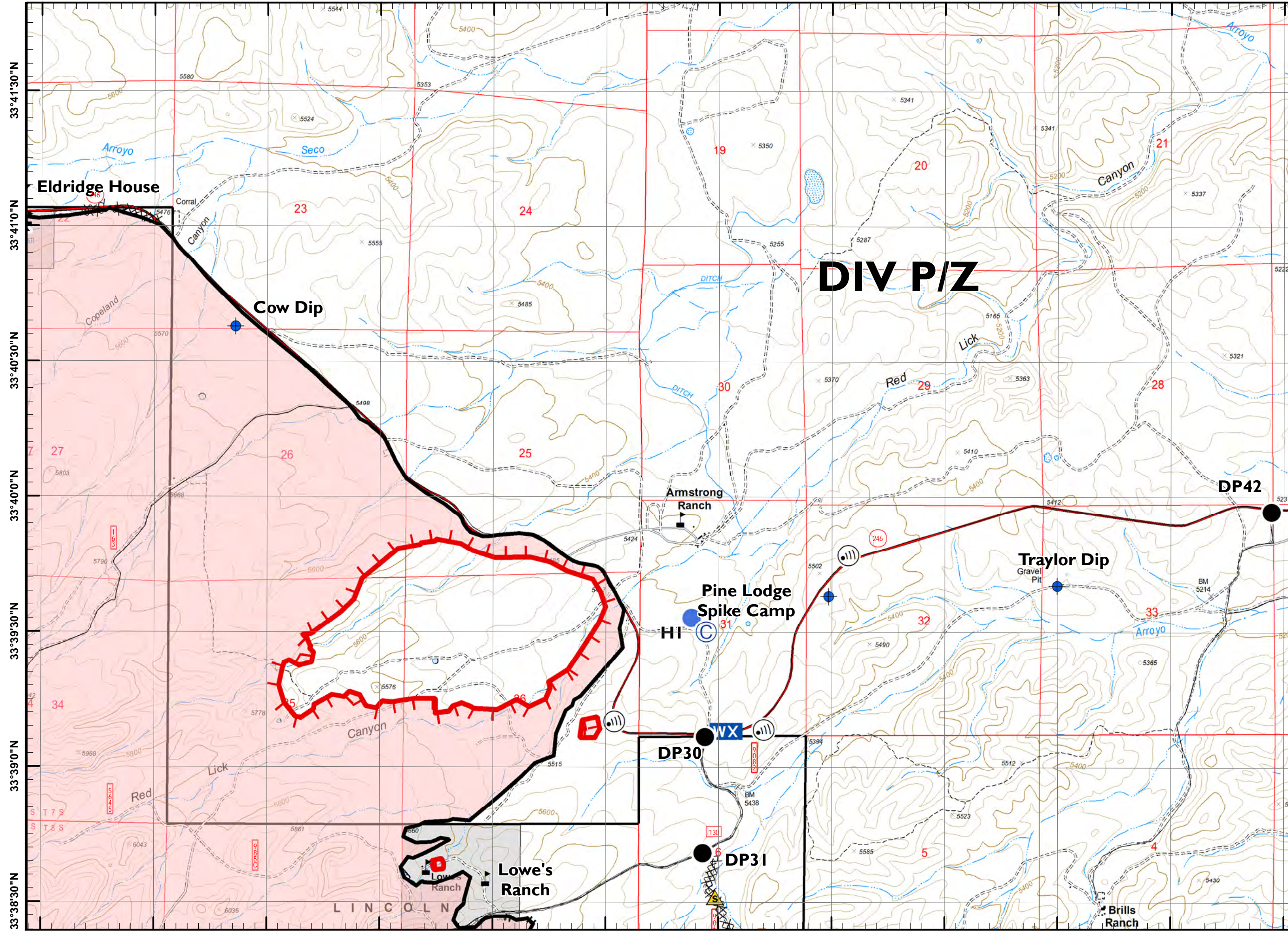
- Uncontrolled Fire Edge
- Completed Line
- Completed Dozer Line
- Completed Hand Line
- Road as Completed Line
- Access or Improved Road
- Line Break Completed
- Proposed Dozer Line
- Planned Fire Line
- Wildfire Daily Fire Perimeter
- National Forest



NAD 83 UTM Zone 13N
 SW IMT 5 GIS 6/28/2019 8:08:37 PM



105°15'0"W 105°14'30"W 105°14'0"W 105°13'30"W 105°13'0"W 105°12'30"W 105°12'0"W 105°11'30"W 105°11'0"W 105°10'30"W 105°10'0"W 105°9'30"W



Pine Lodge IAP

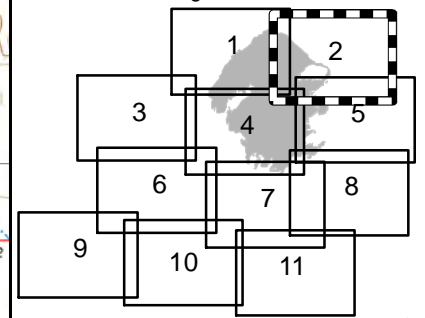
NM-LNF-000249

Day Operational Period

6/29/2019

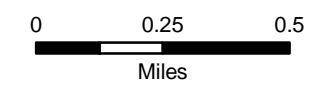


Page 2 of 11



- Aerial Hazard
- Camp
- Dip Site
- Drop Point
- Gate
- Helispot
- Internet Access
- Mobile Weather Unit
- Repeater
- Safety Zone
- Water Source
- Value at Risk
- Division Break

- Uncontrolled Fire Edge
- Completed Line
- Completed Dozer Line
- Completed Hand Line
- Road as Completed Line
- Access or Improved Road
- Line Break Completed
- Proposed Dozer Line
- Planned Fire Line
- Wildfire Daily Fire Perimeter
- National Forest



NAD 83 UTM Zone 13N
SW IMT 5 GIS 6/28/2019 8:09:16 PM

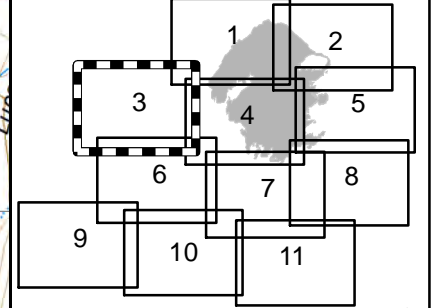
105°15'0"W 105°14'30"W 105°14'0"W 105°13'30"W 105°13'0"W 105°12'30"W 105°12'0"W 105°11'30"W 105°11'0"W 105°10'30"W 105°10'0"W 105°9'30"W

105°24'0"W 105°23'30"W 105°23'0"W 105°22'30"W 105°22'0"W 105°21'30"W 105°21'0"W 105°20'30"W 105°20'0"W 105°19'30"W 105°19'0"W

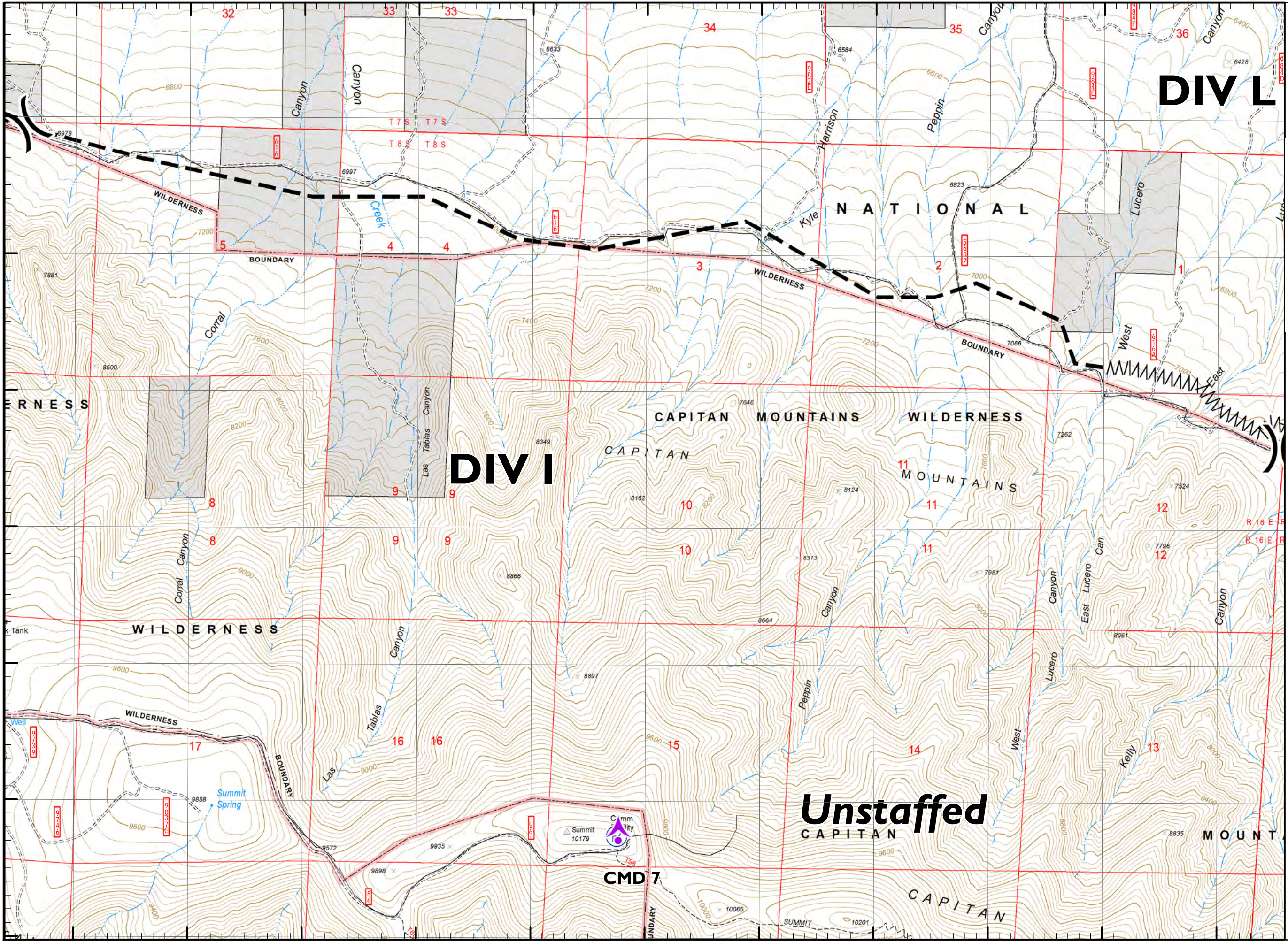
Pine Lodge IAP NM-LNF-000249 Day Operational Period 6/29/2019



Page 3 of 11

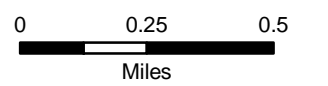


33°39'0"N
33°38'30"N
33°38'0"N
33°37'30"N
33°37'0"N
33°36'30"N
33°36'0"N
33°35'0"N

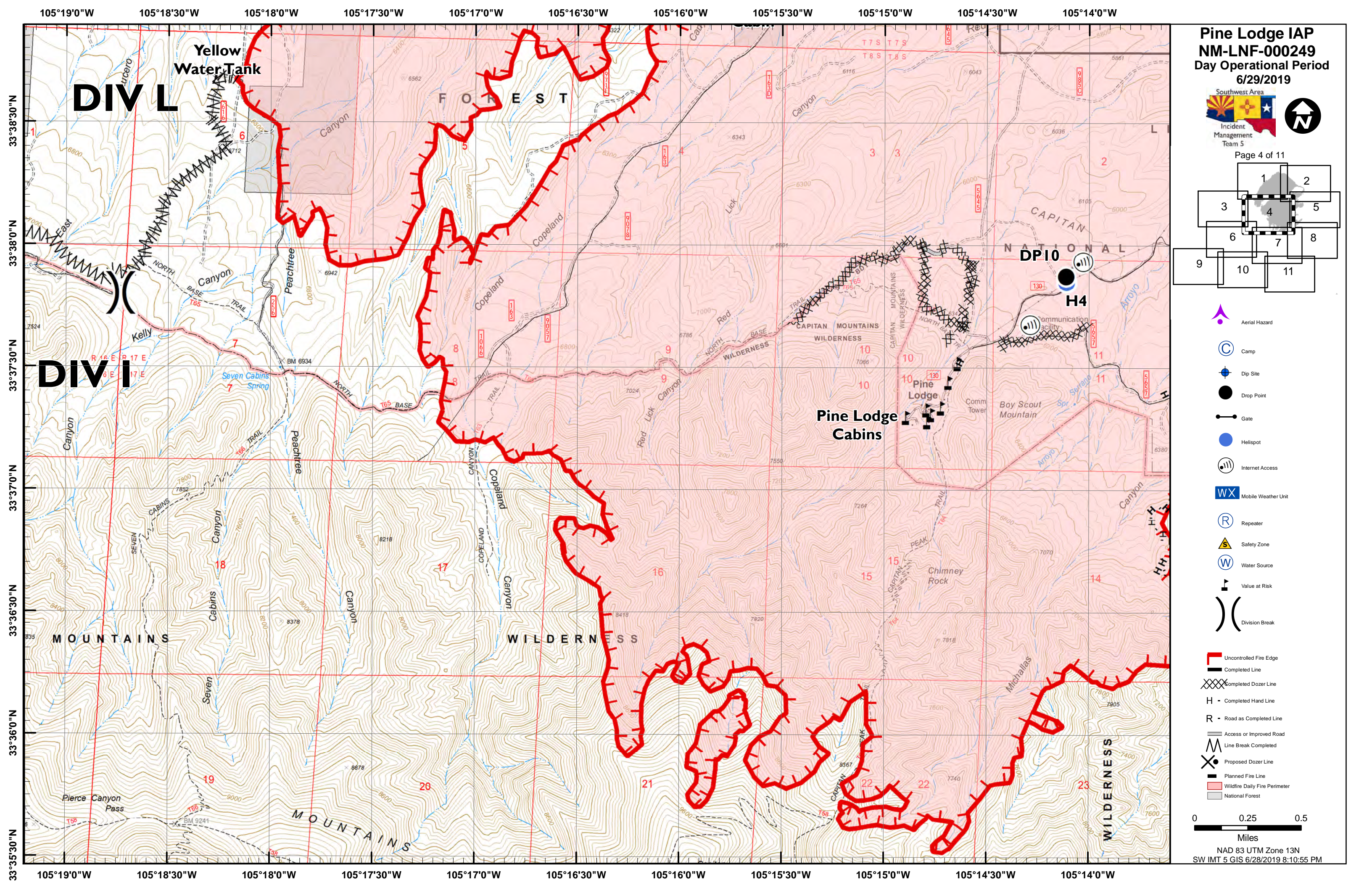


- Aerial Hazard
- Camp
- Dip Site
- Drop Point
- Gate
- Helispot
- Internet Access
- Mobile Weather Unit
- Repeater
- Safety Zone
- Water Source
- Value at Risk
- Division Break

- Uncontrolled Fire Edge
- Completed Line
- Completed Dozer Line
- Completed Hand Line
- Road as Completed Line
- Access or Improved Road
- Line Break Completed
- Proposed Dozer Line
- Planned Fire Line
- Wildfire Daily Fire Perimeter
- National Forest



NAD 83 UTM Zone 13N
SW IMT 5 GIS 6/28/2019 8:09:58 PM



Pine Lodge IAP

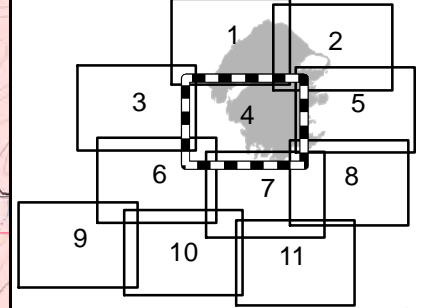
NM-LNF-000249

Day Operational Period

6/29/2019

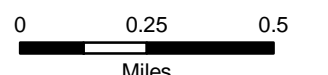


Page 4 of 11

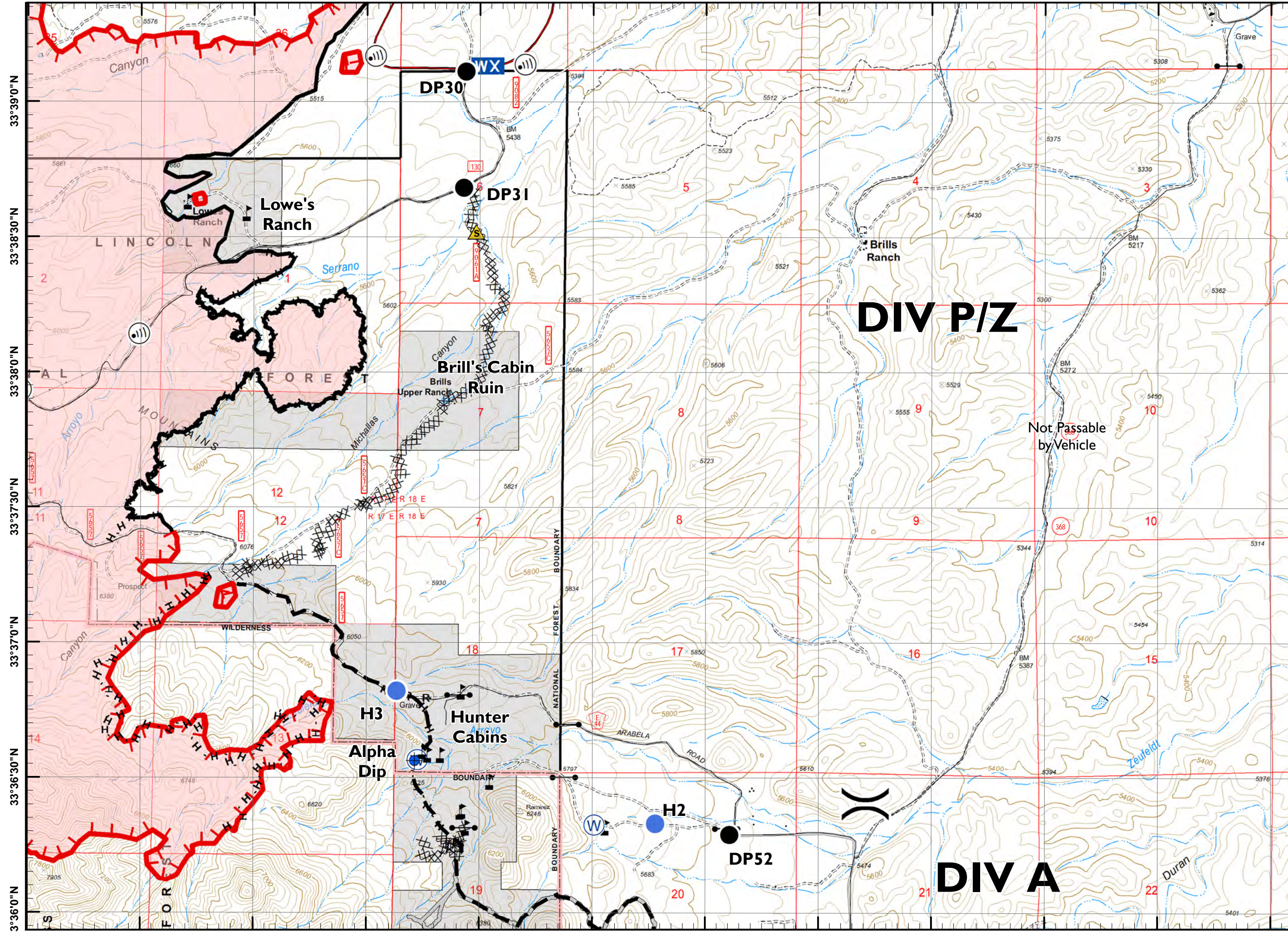


- Aerial Hazard
- Camp
- Dip Site
- Drop Point
- Gate
- Hellspot
- Internet Access
- Mobile Weather Unit
- Repeater
- Safety Zone
- Water Source
- Value at Risk
- Division Break

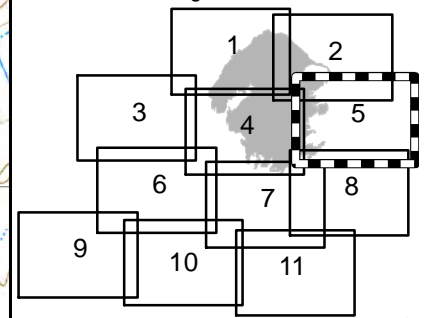
- Uncontrolled Fire Edge
- Completed Line
- Completed Dozer Line
- Completed Hand Line
- Road as Completed Line
- Access or Improved Road
- Line Break Completed
- Proposed Dozer Line
- Planned Fire Line
- Wildfire Daily Fire Perimeter
- National Forest



NAD 83 UTM Zone 13N
SW IMT 5 GIS 6/28/2019 8:10:55 PM

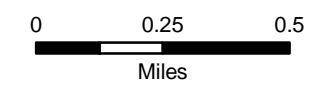


Pine Lodge IAP NM-LNF-000249 Day Operational Period 6/29/2019



- Aerial Hazard
- Camp
- Dip Site
- Drop Point
- Gate
- Helispot
- Internet Access
- Mobile Weather Unit
- Repeater
- Safety Zone
- Water Source
- Value at Risk
- Division Break

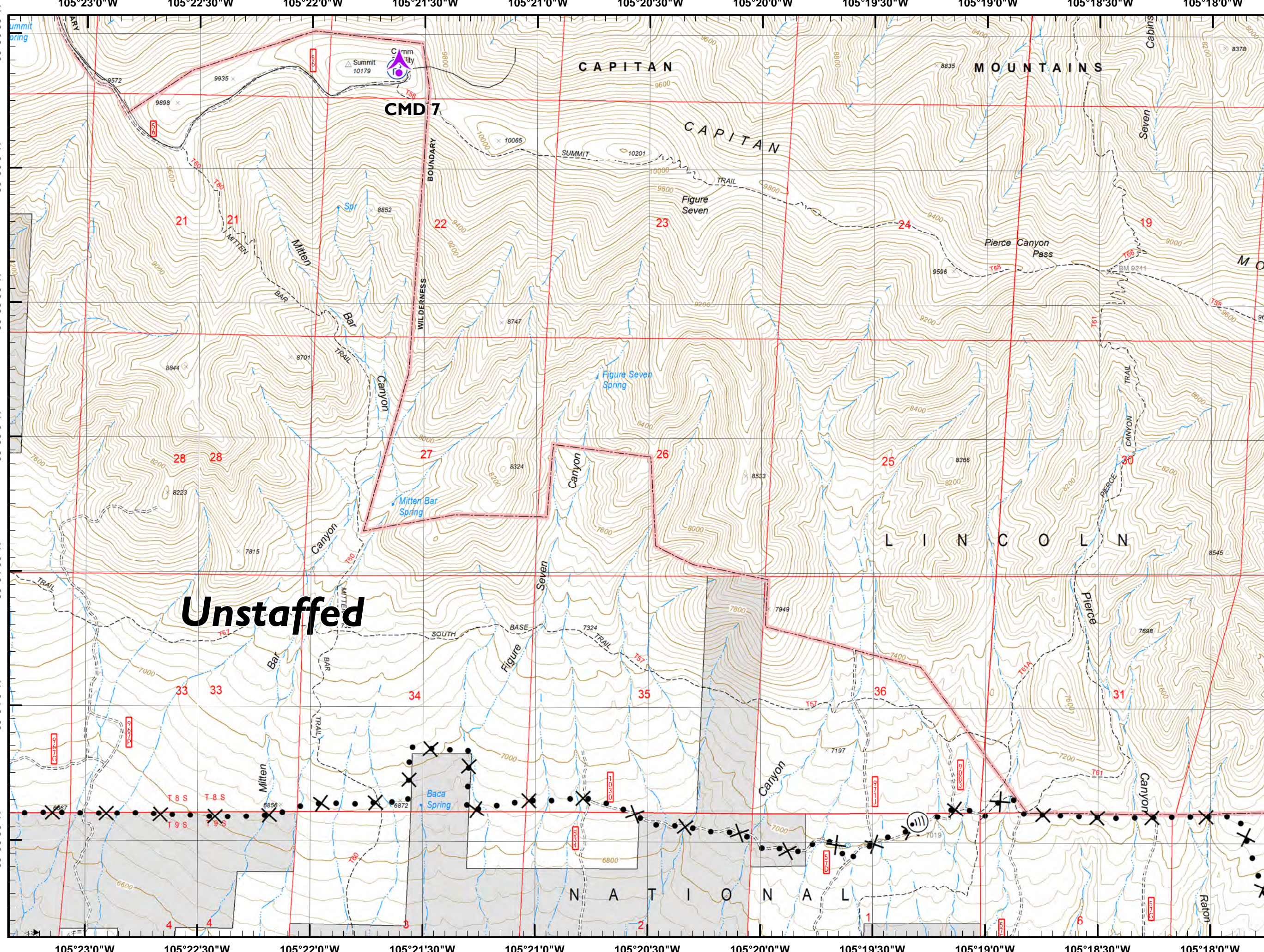
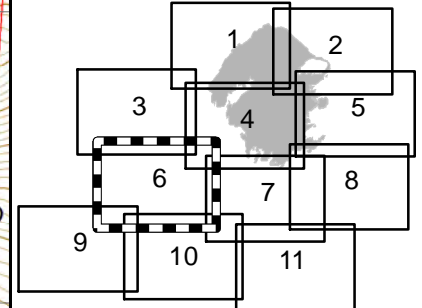
- Uncontrolled Fire Edge
- Completed Line
- Completed Dozer Line
- Completed Hand Line
- Road as Completed Line
- Access or Improved Road
- Line Break Completed
- Proposed Dozer Line
- Planned Fire Line
- Wildfire Daily Fire Perimeter
- National Forest



Pine Lodge IAP
NM-LNF-000249
Day Operational Period
6/29/2019

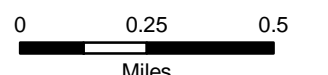


Page 6 of 11



- Aerial Hazard
- Camp
- Dip Site
- Drop Point
- Gate
- Helispot
- Internet Access
- Mobile Weather Unit
- Repeater
- Safety Zone
- Water Source
- Value at Risk
- Division Break

- Uncontrolled Fire Edge
- Completed Line
- Completed Dozer Line
- Completed Hand Line
- Road as Completed Line
- Access or Improved Road
- Line Break Completed
- Proposed Dozer Line
- Planned Fire Line
- Wildfire Daily Fire Perimeter
- National Forest

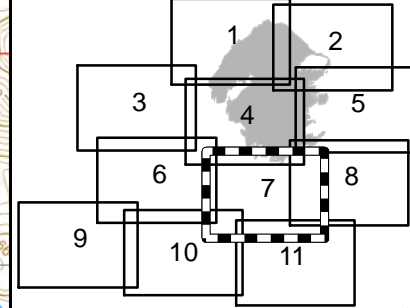


NAD 83 UTM Zone 13N
 SW IMT 5 GIS 6/28/2019 8:12:44 PM

Pine Lodge IAP
NM-LNF-000249
Day Operational Period
6/29/2019

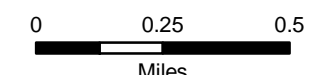


Page 7 of 11

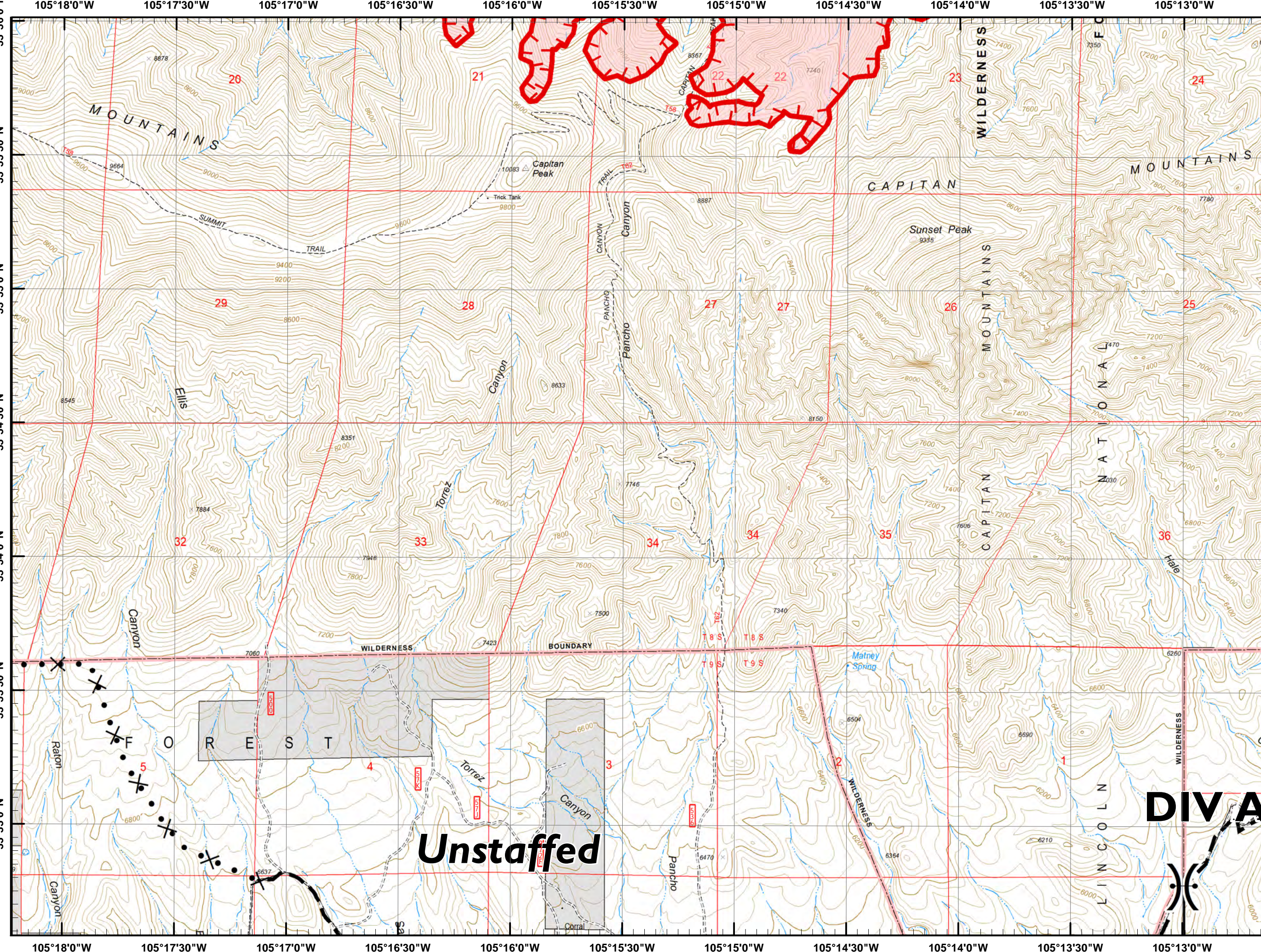


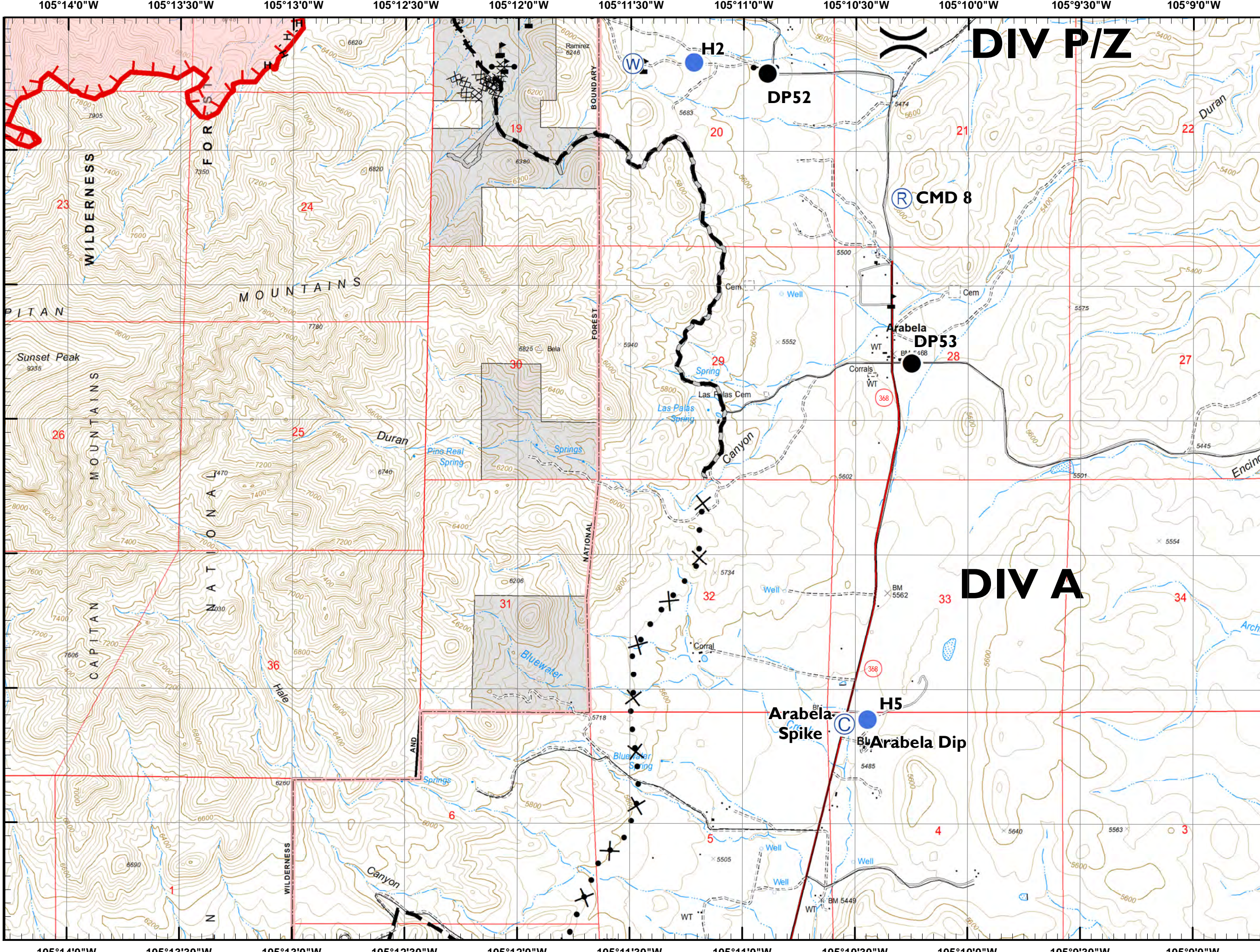
- Aerial Hazard
- Camp
- Dip Site
- Drop Point
- Gate
- Helispot
- Internet Access
- Mobile Weather Unit
- Repeater
- Safety Zone
- Water Source
- Value at Risk
- Division Break

- Uncontrolled Fire Edge
- Completed Line
- Completed Dozer Line
- Completed Hand Line
- Road as Completed Line
- Access or Improved Road
- Line Break Completed
- Proposed Dozer Line
- Planned Fire Line
- Wildfire Daily Fire Perimeter
- National Forest



NAD 83 UTM Zone 13N
 SW IMT 5 GIS 6/28/2019 8:13:36 PM

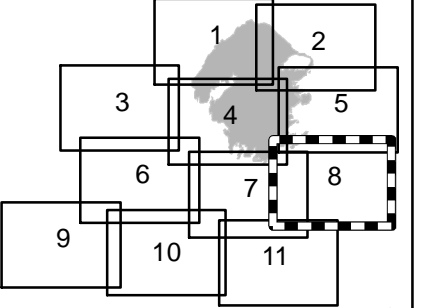




Pine Lodge IAP
NM-LNF-000249
Day Operational Period
6/29/2019

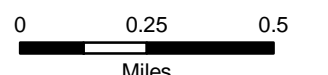


Page 8 of 11



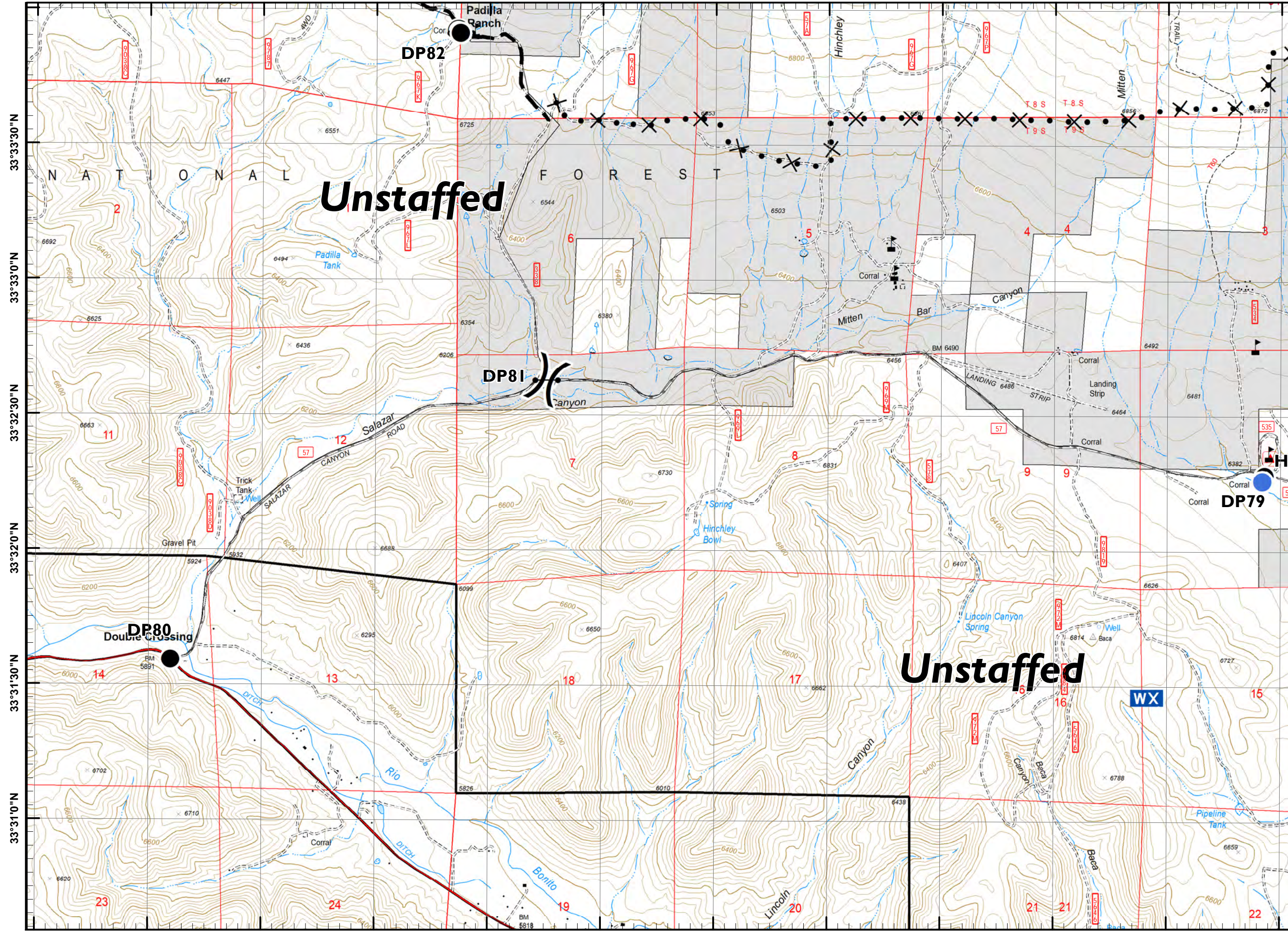
- Aerial Hazard
- Camp
- Dip Site
- Drop Point
- Gate
- Hellspot
- Internet Access
- Mobile Weather Unit
- Repeater
- Safety Zone
- Water Source
- Value at Risk
- Division Break

- Uncontrolled Fire Edge
- Completed Line
- Completed Dozer Line
- Completed Hand Line
- Road as Completed Line
- Access or Improved Road
- Line Break Completed
- Proposed Dozer Line
- Planned Fire Line
- Wildfire Daily Fire Perimeter
- National Forest



NAD 83 UTM Zone 13N
 SW IMT 5 GIS 6/28/2019 8:14:26 PM

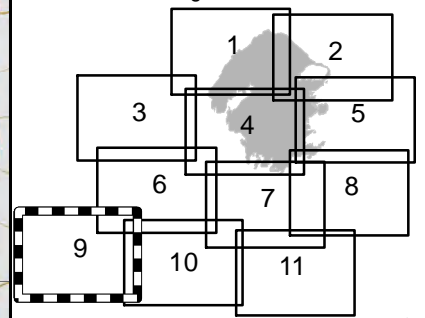
105°27'0"W 105°26'30"W 105°26'0"W 105°25'30"W 105°25'0"W 105°24'30"W 105°24'0"W 105°23'30"W 105°23'0"W 105°22'30"W 105°22'0"W 105°21'30"W



Pine Lodge IAP NM-LNF-000249 Day Operational Period 6/29/2019

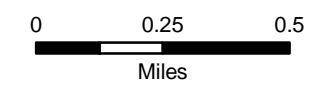


Page 9 of 11



- Aerial Hazard
- Camp
- Dip Site
- Drop Point
- Gate
- Hellsport
- Internet Access
- Mobile Weather Unit
- Repeater
- Safety Zone
- Water Source
- Value at Risk
- Division Break

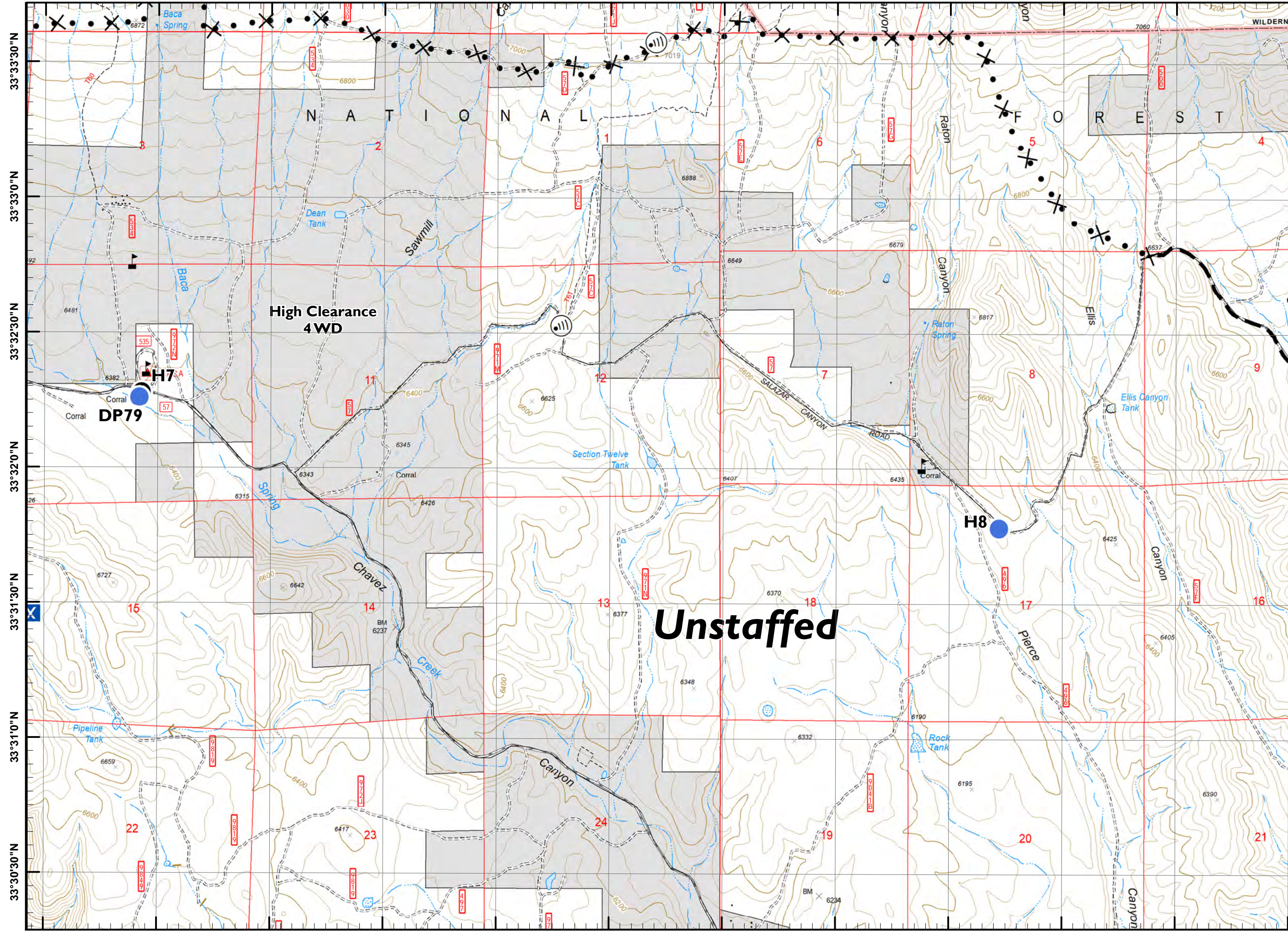
- Uncontrolled Fire Edge
- Completed Line
- Completed Dozer Line
- Completed Hand Line
- Road as Completed Line
- Access or Improved Road
- Line Break Completed
- Proposed Dozer Line
- Planned Fire Line
- Wildfire Daily Fire Perimeter
- National Forest



NAD 83 UTM Zone 13N
SW IMT 5 GIS 6/28/2019 8:15:15 PM

105°27'0"W 105°26'30"W 105°26'0"W 105°25'30"W 105°25'0"W 105°24'30"W 105°24'0"W 105°23'30"W 105°23'0"W 105°22'30"W 105°22'0"W 105°21'30"W

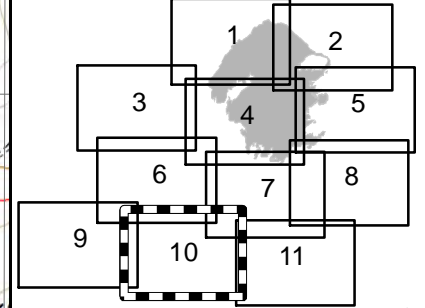
105°22'0"W 105°21'30"W 105°21'0"W 105°20'30"W 105°20'0"W 105°19'30"W 105°19'0"W 105°18'30"W 105°18'0"W 105°17'30"W 105°17'0"W 105°16'30"W



Pine Lodge IAP NM-LNF-000249 Day Operational Period 6/29/2019

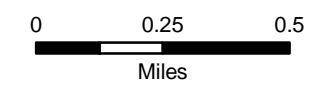


Page 10 of 11



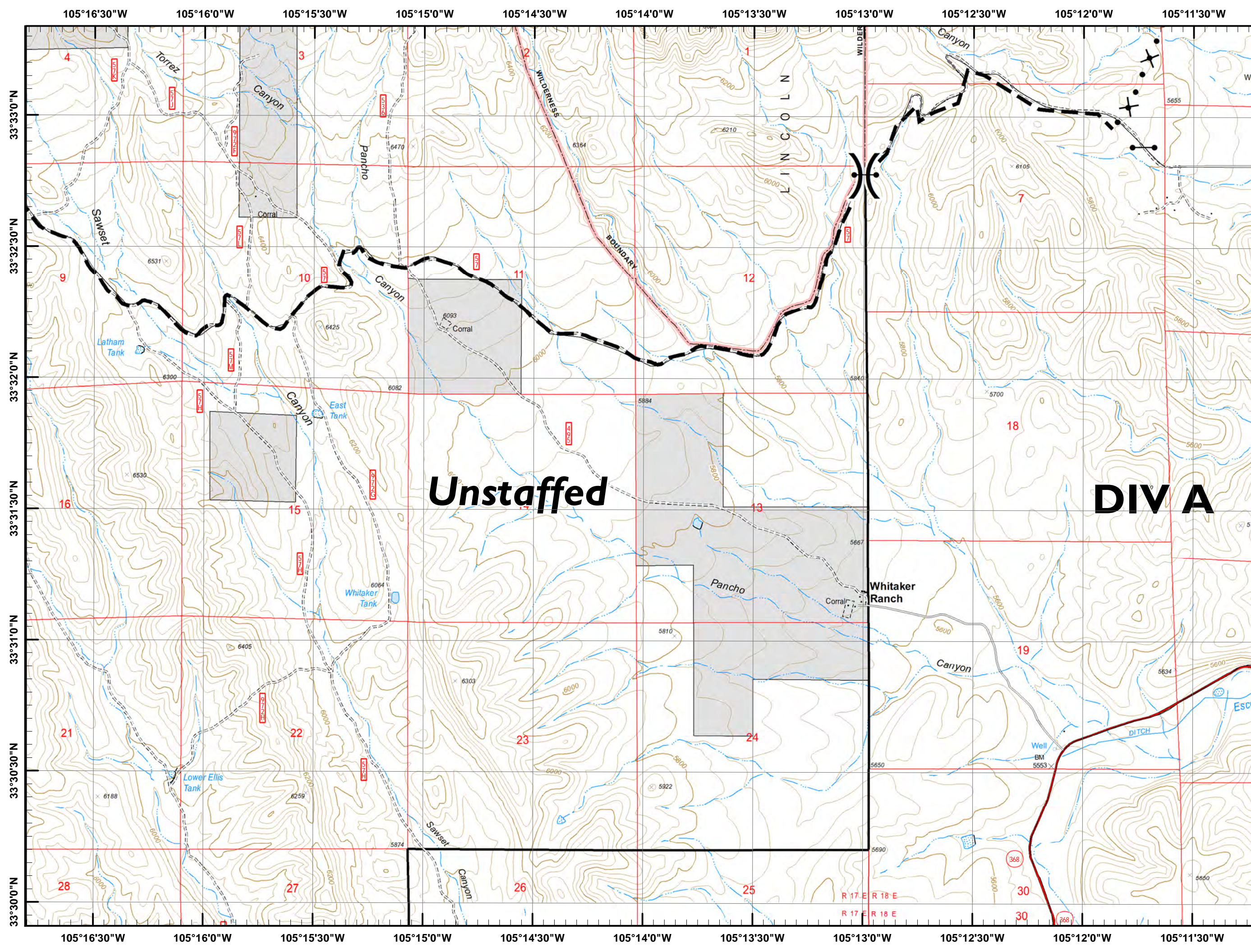
- Aerial Hazard
- Camp
- Dip Site
- Drop Point
- Gate
- Hellspot
- Internet Access
- Mobile Weather Unit
- Repeater
- Safety Zone
- Water Source
- Value at Risk
- Division Break

- Uncontrolled Fire Edge
- Completed Line
- Completed Dozer Line
- Completed Hand Line
- Road as Completed Line
- Access or Improved Road
- Line Break Completed
- Proposed Dozer Line
- Planned Fire Line
- Wildfire Daily Fire Perimeter
- National Forest



NAD 83 UTM Zone 13N
SW IMT 5 GIS 6/28/2019 8:15:59 PM

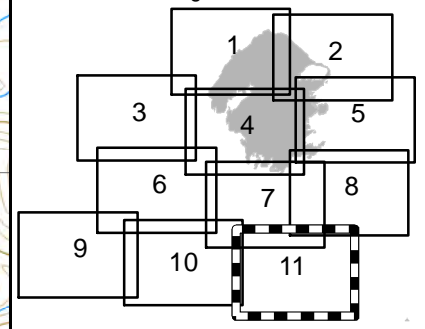
105°22'0"W 105°21'30"W 105°21'0"W 105°20'30"W 105°20'0"W 105°19'30"W 105°19'0"W 105°18'30"W 105°18'0"W 105°17'30"W 105°17'0"W 105°16'30"W



Pine Lodge IAP
NM-LNF-000249
Day Operational Period
6/29/2019



Page 11 of 11

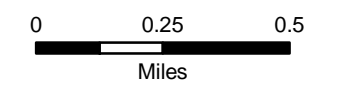


Unstaffed

DIVA

- Aerial Hazard
- Camp
- Dip Site
- Drop Point
- Gate
- Helispot
- Internet Access
- Mobile Weather Unit
- Repeater
- Safety Zone
- Water Source
- Value at Risk
- Division Break

- Uncontrolled Fire Edge
- Completed Line
- Completed Dozer Line
- Completed Hand Line
- Road as Completed Line
- Access or Improved Road
- Line Break Completed
- Proposed Dozer Line
- Planned Fire Line
- Wildfire Daily Fire Perimeter
- National Forest



NAD 83 UTM Zone 13N
 SW IMT 5 GIS 6/28/2019 8:16:39 PM