

**Pine Lodge IAP Index  
NM-LNF-000249**

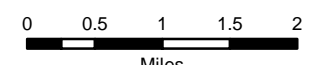
**Day Operational Period  
6/30/2019**



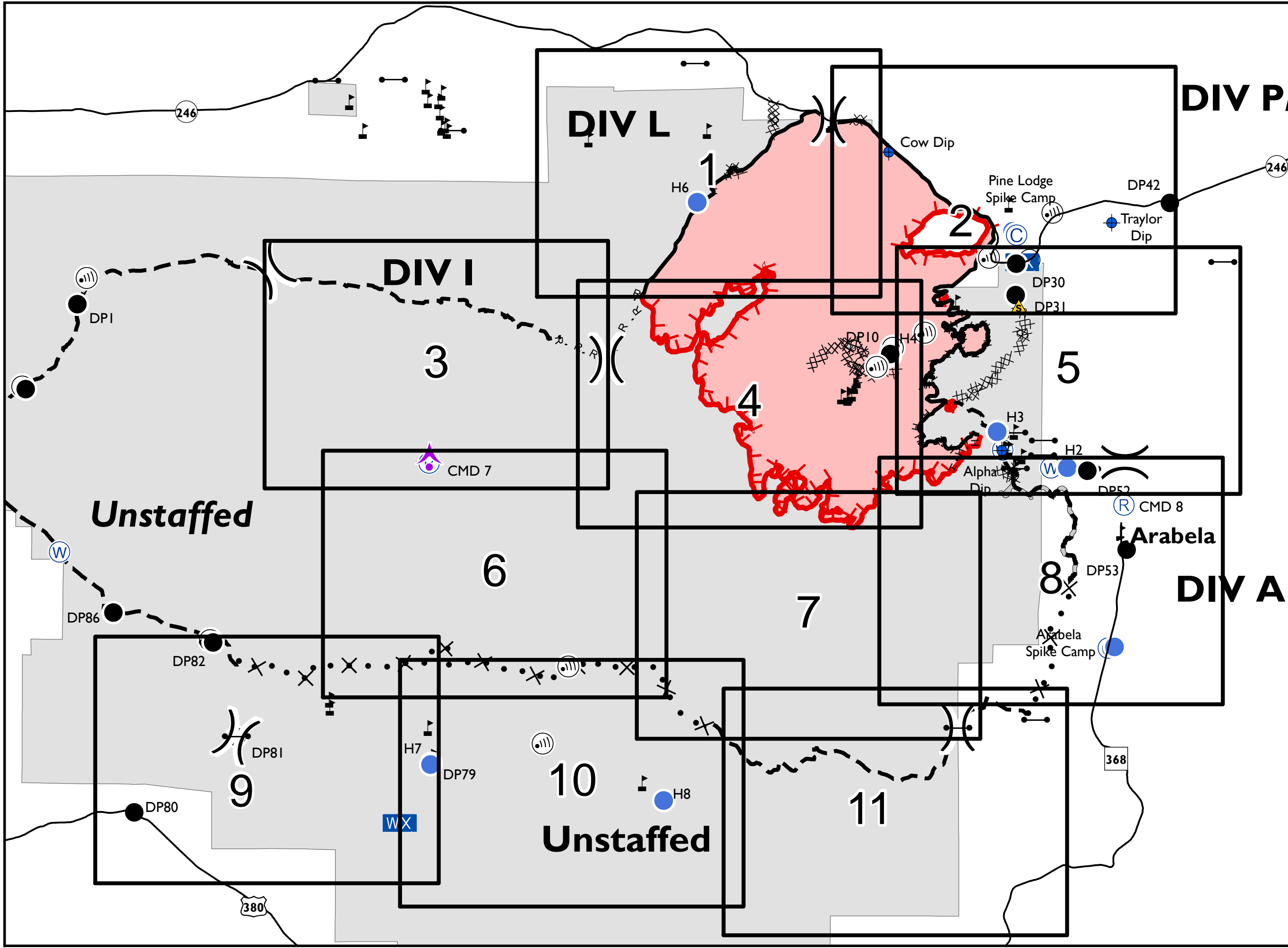
GIS Acres 12,828  
6/27/2019 0300

- Aerial Hazard
- Camp
- Dip Site
- Drop Point
- Gate
- Helispot
- Internet Access
- Mobile Weather Unit
- Repeater
- Safety Zone
- Water Source
- Value at Risk
- Division Break

- Uncontrolled Fire Edge
- Completed Line
- Completed Dozer Line
- Completed Hand Line
- Road as Completed Line
- Access or Improved Road
- Line Break Completed
- Proposed Dozer Line
- Planned Fire Line
- Wildfire Daily Fire Perimeter
- National Forest



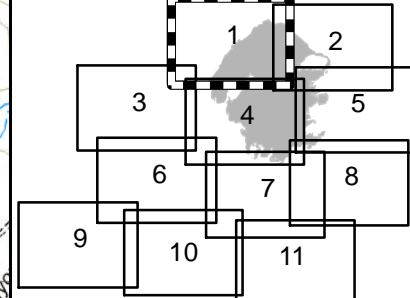
NAD 83 UTM Zone 13N  
SW IMT 5 GIS 6/29/2019 7:15:01 PM



**Pine Lodge IAP**  
**NM-LNF-000249**  
**Day Operational Period**  
**6/30/2019**

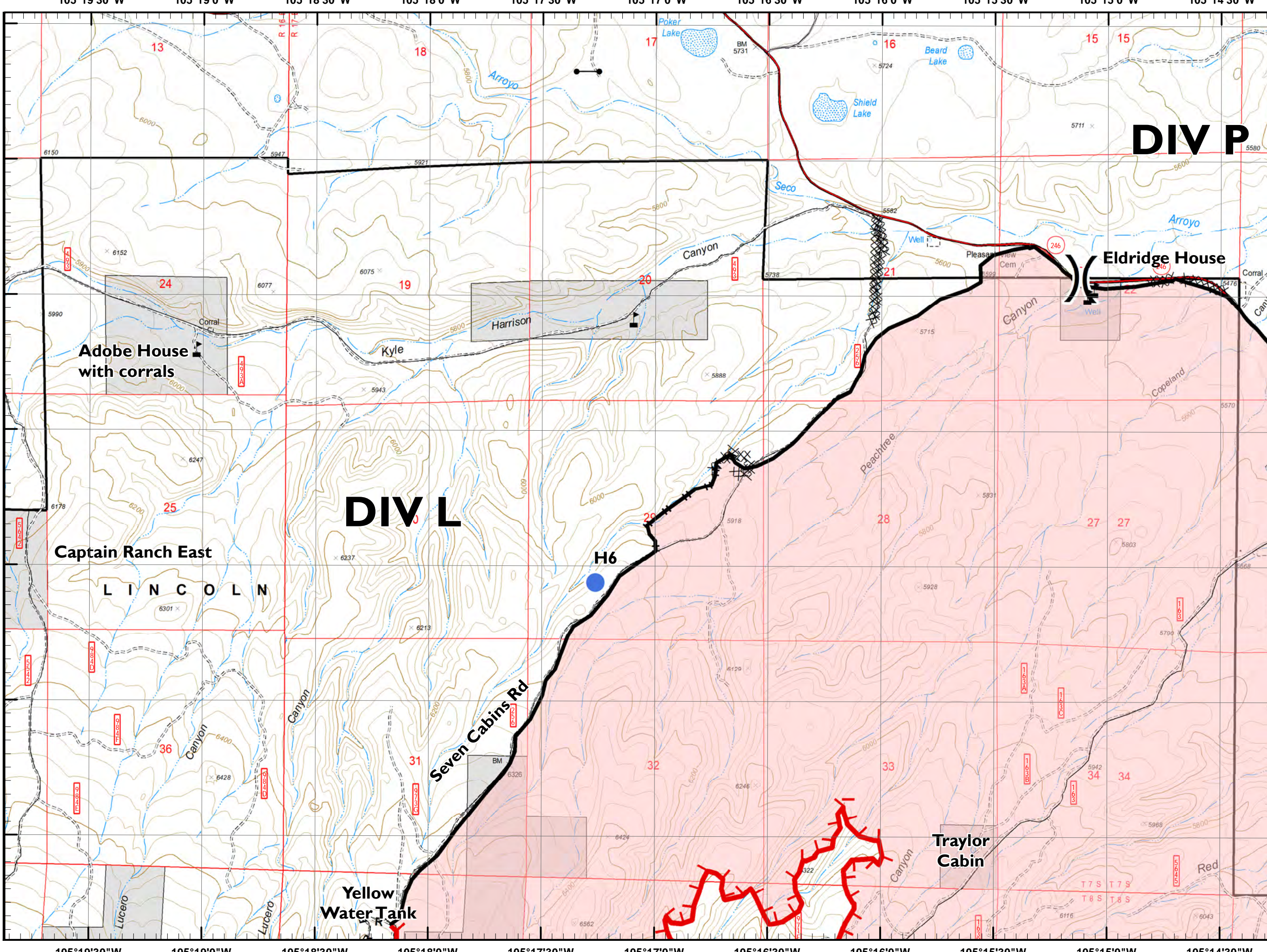


Page 1 of 11



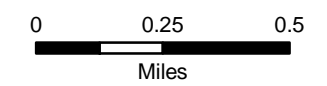
**DIV P**

**DIV L**



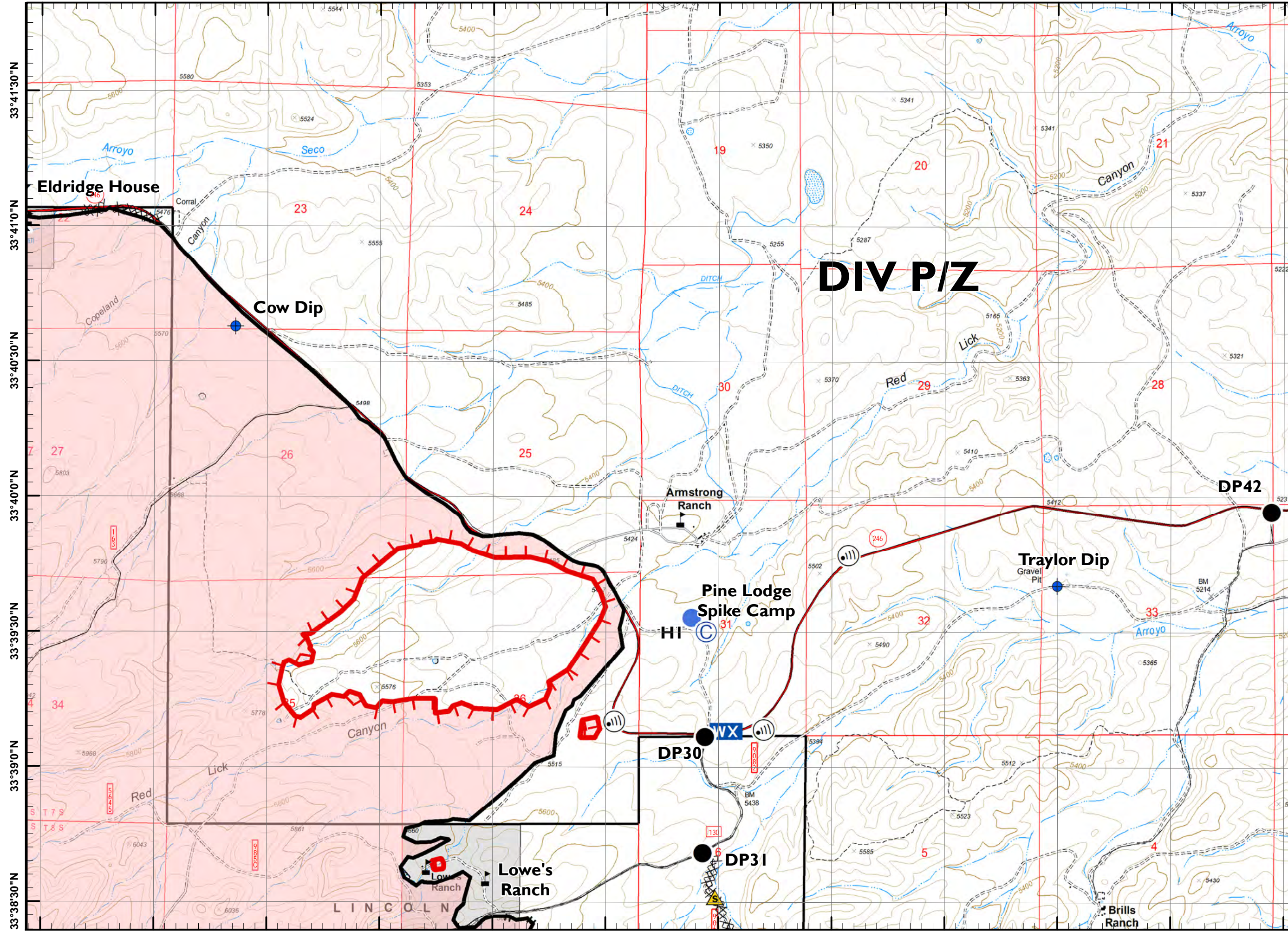
- Aerial Hazard
- Camp
- Dip Site
- Drop Point
- Gate
- Hellspot
- Internet Access
- Mobile Weather Unit
- Repeater
- Safety Zone
- Water Source
- Value at Risk
- Division Break

- Uncontrolled Fire Edge
- Completed Line
- Completed Dozer Line
- Completed Hand Line
- Road as Completed Line
- Access or Improved Road
- Line Break Completed
- Proposed Dozer Line
- Planned Fire Line
- Wildfire Daily Fire Perimeter
- National Forest



NAD 83 UTM Zone 13N  
 SW IMT 5 GIS 6/29/2019 7:14:08 PM

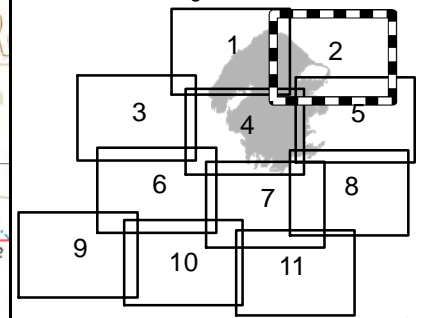
105°15'0"W 105°14'30"W 105°14'0"W 105°13'30"W 105°13'0"W 105°12'30"W 105°12'0"W 105°11'30"W 105°11'0"W 105°10'30"W 105°10'0"W 105°9'30"W



# Pine Lodge IAP NM-LNF-000249 Day Operational Period 6/30/2019

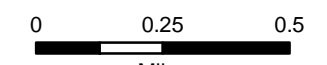


Page 2 of 11



- Aerial Hazard
- Camp
- Dip Site
- Drop Point
- Gate
- Helispot
- Internet Access
- Mobile Weather Unit
- Repeater
- Safety Zone
- Water Source
- Value at Risk
- Division Break

- Uncontrolled Fire Edge
- Completed Line
- Completed Dozer Line
- Completed Hand Line
- Road as Completed Line
- Access or Improved Road
- Line Break Completed
- Proposed Dozer Line
- Planned Fire Line
- Wildfire Daily Fire Perimeter
- National Forest



NAD 83 UTM Zone 13N  
SW IMT 5 GIS 6/29/2019 7:15:04 PM

105°15'0"W 105°14'30"W 105°14'0"W 105°13'30"W 105°13'0"W 105°12'30"W 105°12'0"W 105°11'30"W 105°11'0"W 105°10'30"W 105°10'0"W 105°9'30"W

105°24'0"W 105°23'30"W 105°23'0"W 105°22'30"W 105°22'0"W 105°21'30"W 105°21'0"W 105°20'30"W 105°20'0"W 105°19'30"W 105°19'0"W

# Pine Lodge IAP

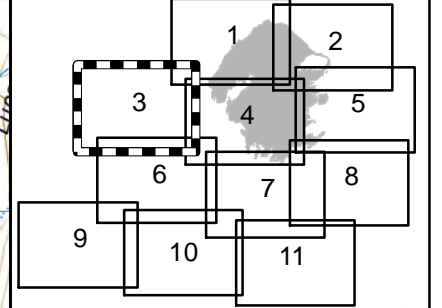
## NM-LNF-000249

### Day Operational Period

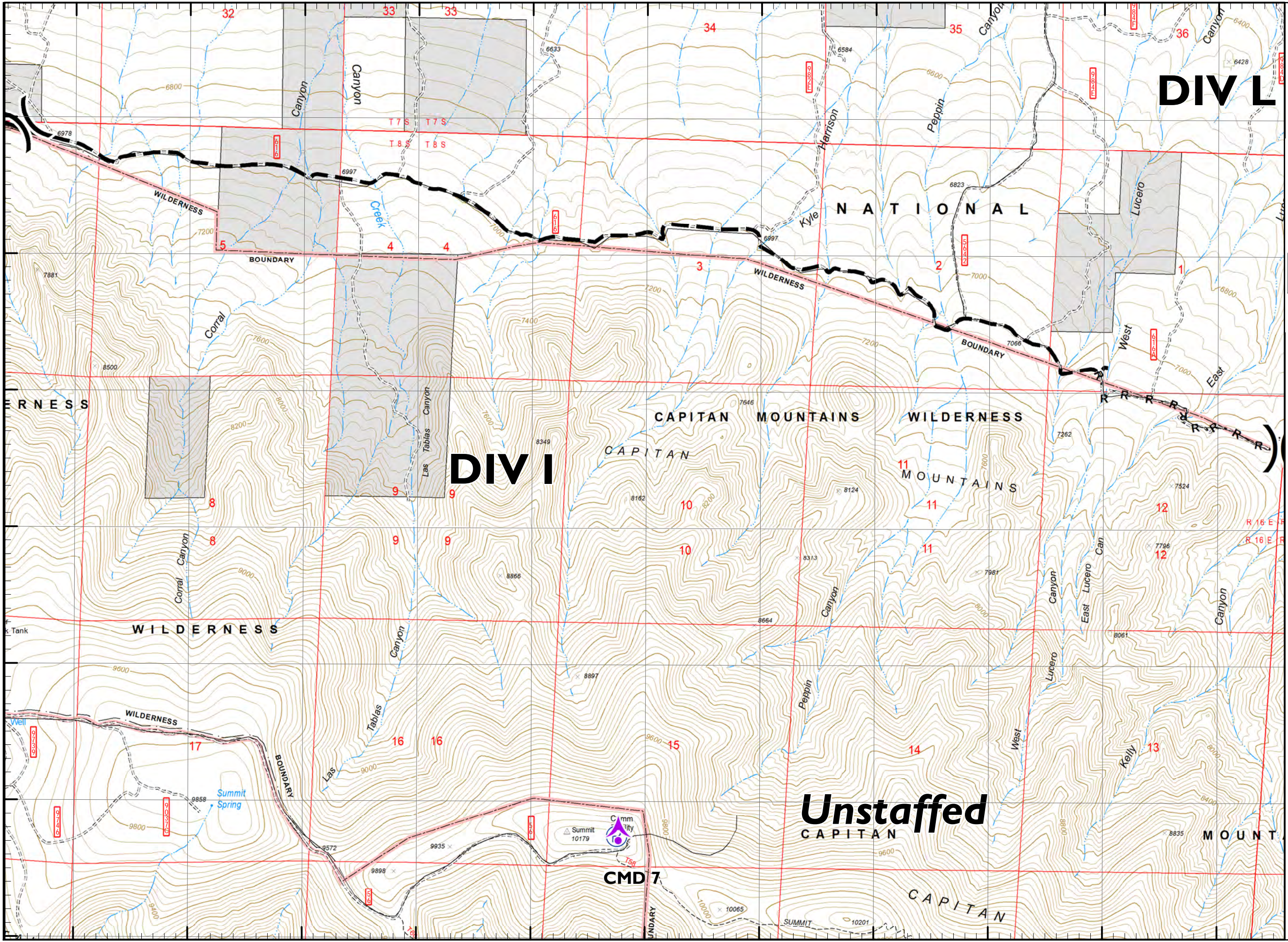
6/30/2019



Page 3 of 11

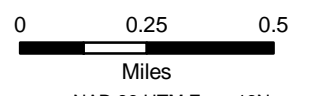


33°39'0"N  
33°38'30"N  
33°38'0"N  
33°37'30"N  
33°37'0"N  
33°36'30"N  
33°36'0"N

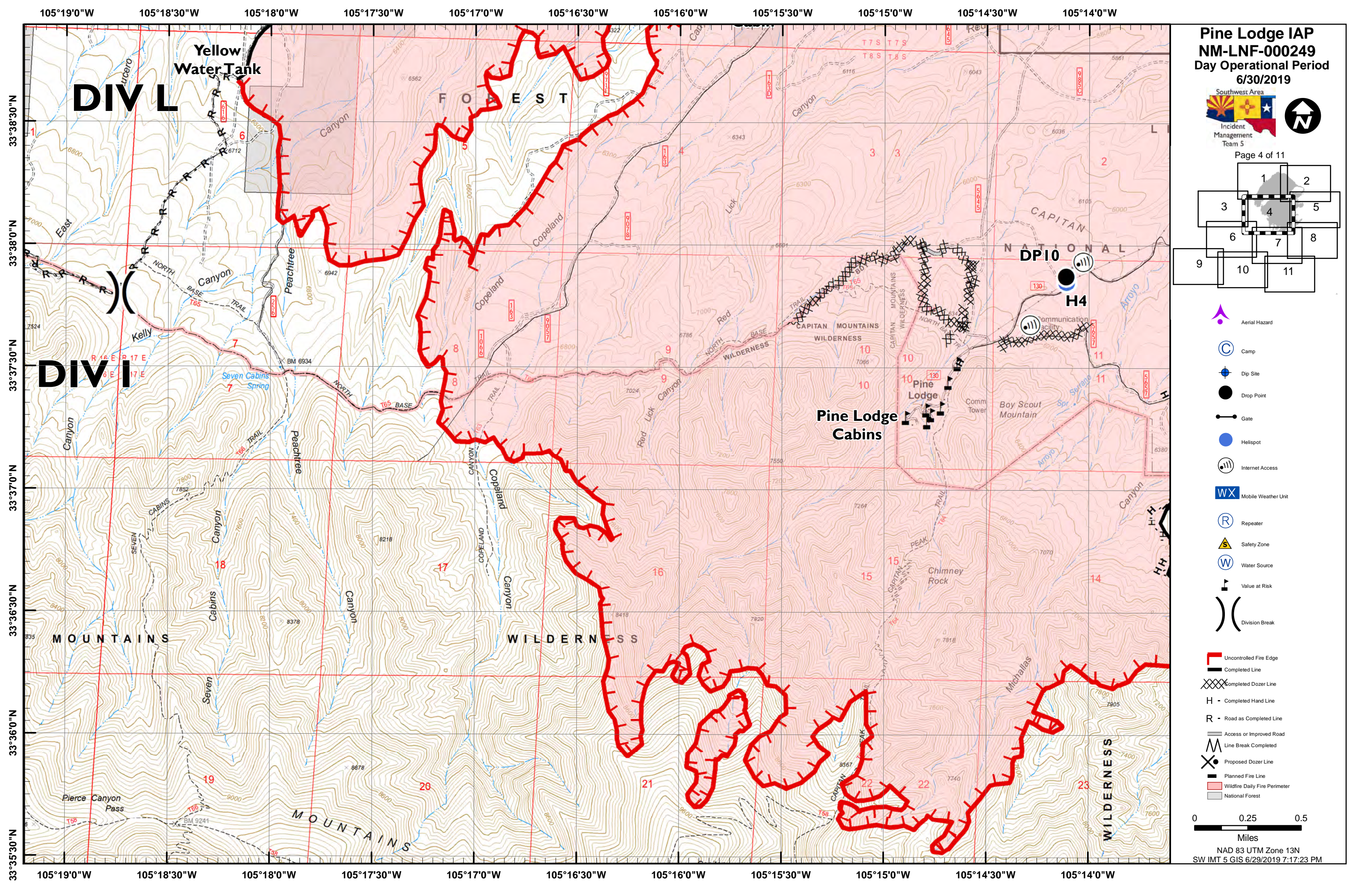


- Aerial Hazard
- Camp
- Dip Site
- Drop Point
- Gate
- Helispot
- Internet Access
- Mobile Weather Unit
- Repeater
- Safety Zone
- Water Source
- Value at Risk
- Division Break

- Uncontrolled Fire Edge
- Completed Line
- Completed Dozer Line
- Completed Hand Line
- Road as Completed Line
- Access or Improved Road
- Line Break Completed
- Proposed Dozer Line
- Planned Fire Line
- Wildfire Daily Fire Perimeter
- National Forest



NAD 83 UTM Zone 13N  
SW IMT 5 GIS 6/29/2019 7:16:05 PM



# Pine Lodge IAP

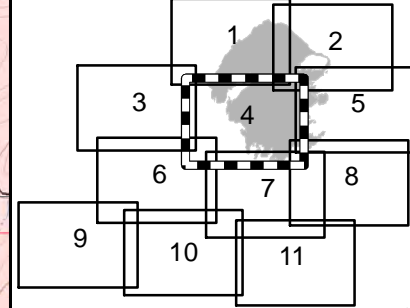
## NM-LNF-000249

### Day Operational Period

6/30/2019



Page 4 of 11



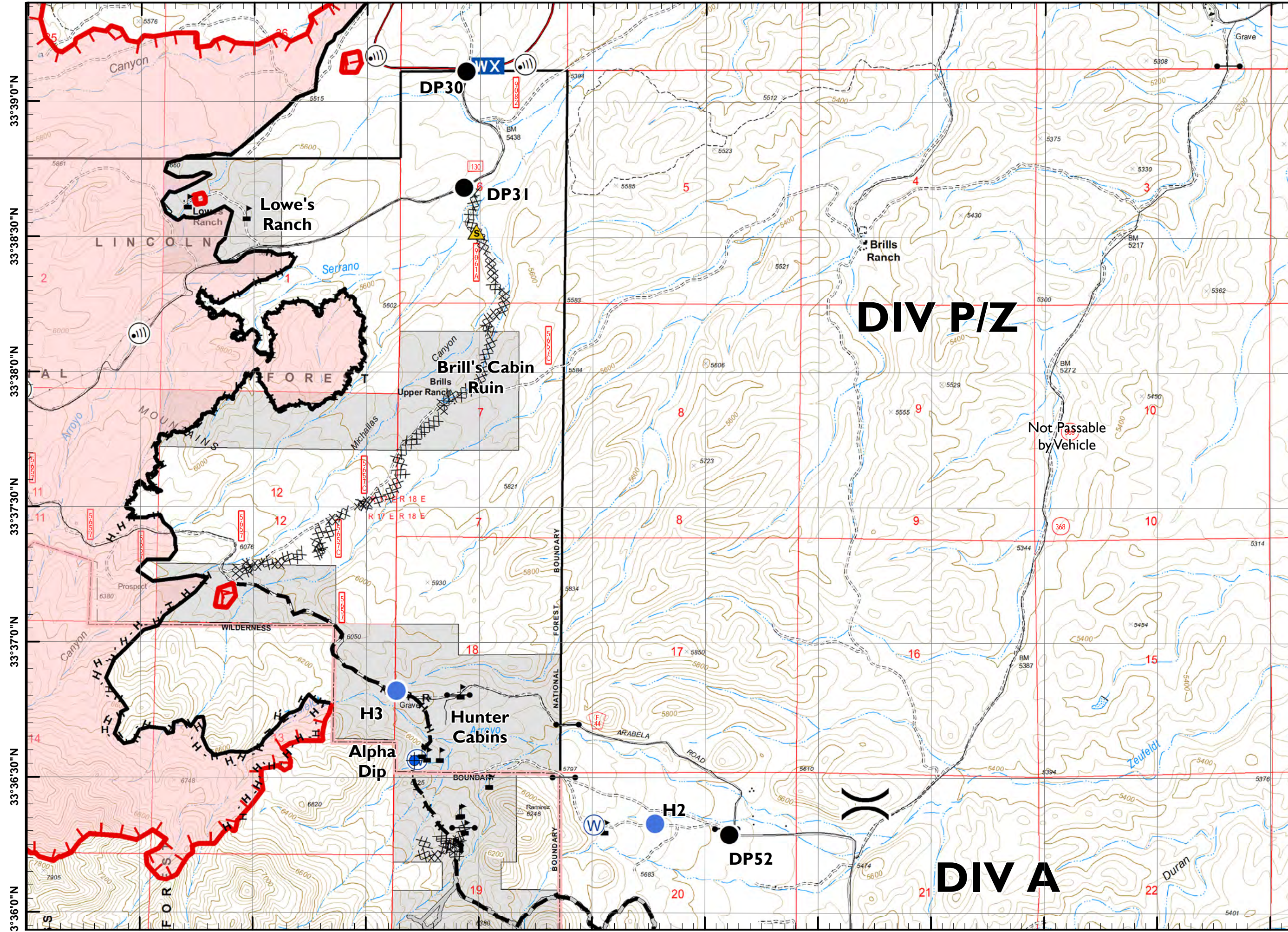
- Aerial Hazard
- Camp
- Dip Site
- Drop Point
- Gate
- Hellsport
- Internet Access
- Mobile Weather Unit
- Repeater
- Safety Zone
- Water Source
- Value at Risk
- Division Break

- Uncontrolled Fire Edge
- Completed Line
- Completed Dozer Line
- Completed Hand Line
- Road as Completed Line
- Access or Improved Road Line Break Completed
- Proposed Dozer Line
- Planned Fire Line
- Wildfire Daily Fire Perimeter
- National Forest

0 0.25 0.5  
Miles

NAD 83 UTM Zone 13N  
SW IMT 5 GIS 6/29/2019 7:17:23 PM

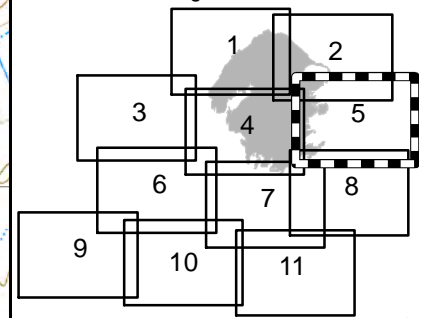
105°14'0"W 105°13'30"W 105°13'0"W 105°12'30"W 105°12'0"W 105°11'30"W 105°11'0"W 105°10'30"W 105°10'0"W 105°9'30"W 105°9'0"W 105°8'30"W



# Pine Lodge IAP NM-LNF-000249 Day Operational Period 6/30/2019

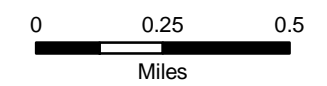


Page 5 of 11



- Aerial Hazard
- Camp
- Dip Site
- Drop Point
- Gate
- Helispot
- Internet Access
- Mobile Weather Unit
- Repeater
- Safety Zone
- Water Source
- Value at Risk
- Division Break

- Uncontrolled Fire Edge
- Completed Line
- Completed Dozer Line
- Completed Hand Line
- Road as Completed Line
- Access or Improved Road
- Line Break Completed
- Proposed Dozer Line
- Planned Fire Line
- Wildfire Daily Fire Perimeter
- National Forest



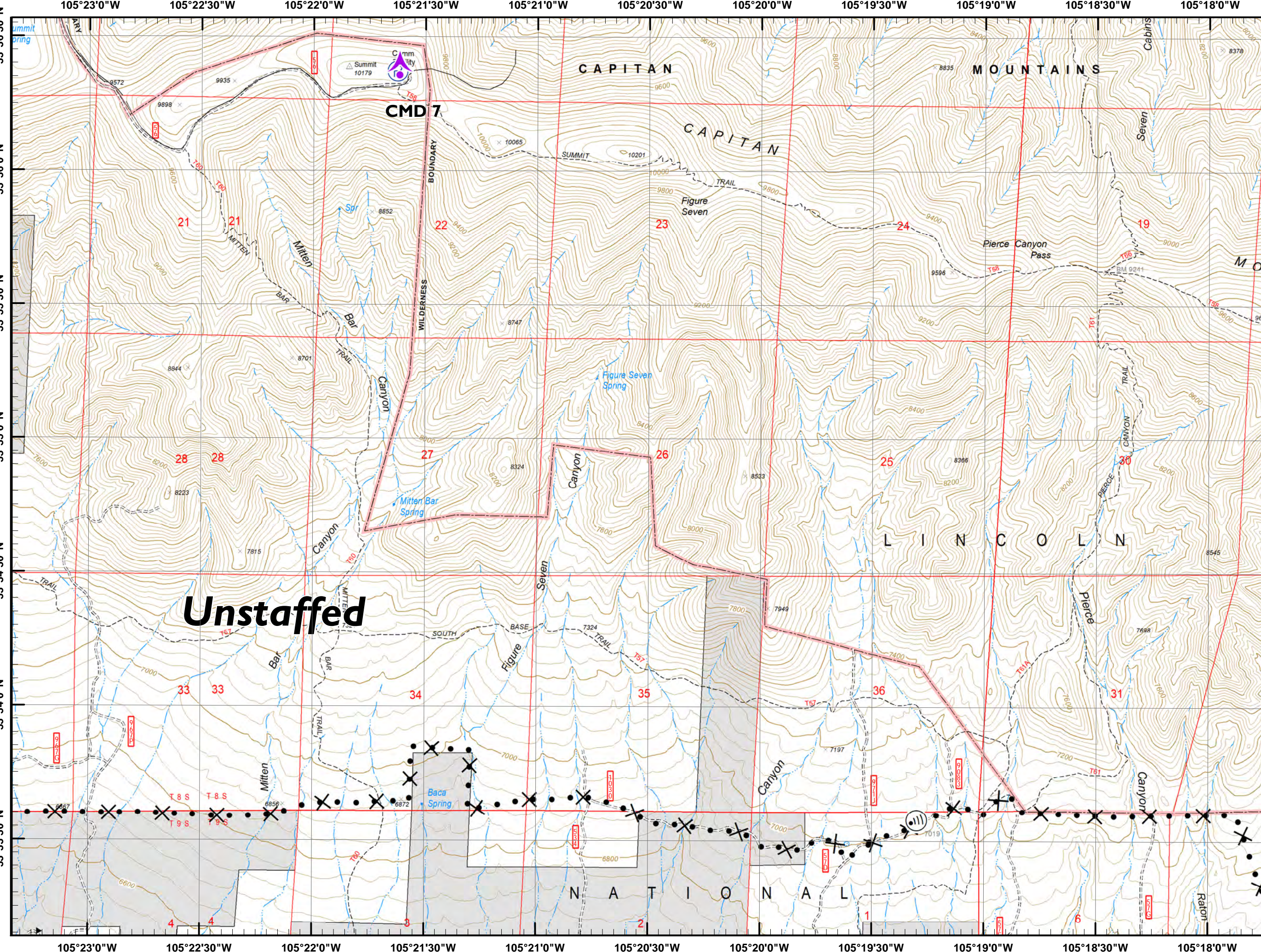
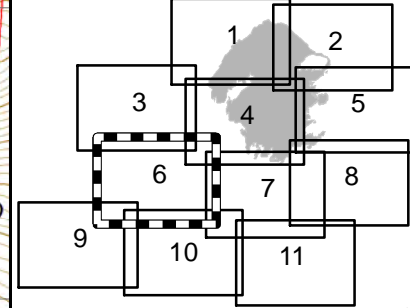
NAD 83 UTM Zone 13N  
SW IMT 5 GIS 6/29/2019 7:18:46 PM

105°13'30"W 105°13'0"W 105°12'30"W 105°12'0"W 105°11'30"W 105°11'0"W 105°10'30"W 105°10'0"W 105°9'30"W 105°9'0"W 105°8'30"W

**Pine Lodge IAP**  
**NM-LNF-000249**  
**Day Operational Period**  
**6/30/2019**

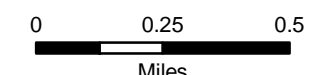


Page 6 of 11



- Aerial Hazard
- Camp
- Dip Site
- Drop Point
- Gate
- Helispot
- Internet Access
- Mobile Weather Unit
- Repeater
- Safety Zone
- Water Source
- Value at Risk
- Division Break

- Uncontrolled Fire Edge
- Completed Line
- Completed Dozer Line
- Completed Hand Line
- Road as Completed Line
- Access or Improved Road
- Line Break Completed
- Proposed Dozer Line
- Planned Fire Line
- Wildfire Daily Fire Perimeter
- National Forest

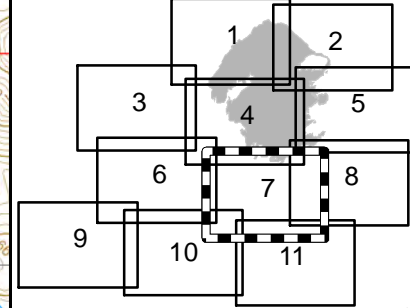


NAD 83 UTM Zone 13N  
 SW IMT 5 GIS 6/29/2019 7:20:00 PM

**Pine Lodge IAP**  
**NM-LNF-000249**  
**Day Operational Period**  
**6/30/2019**

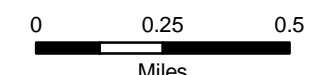


Page 7 of 11

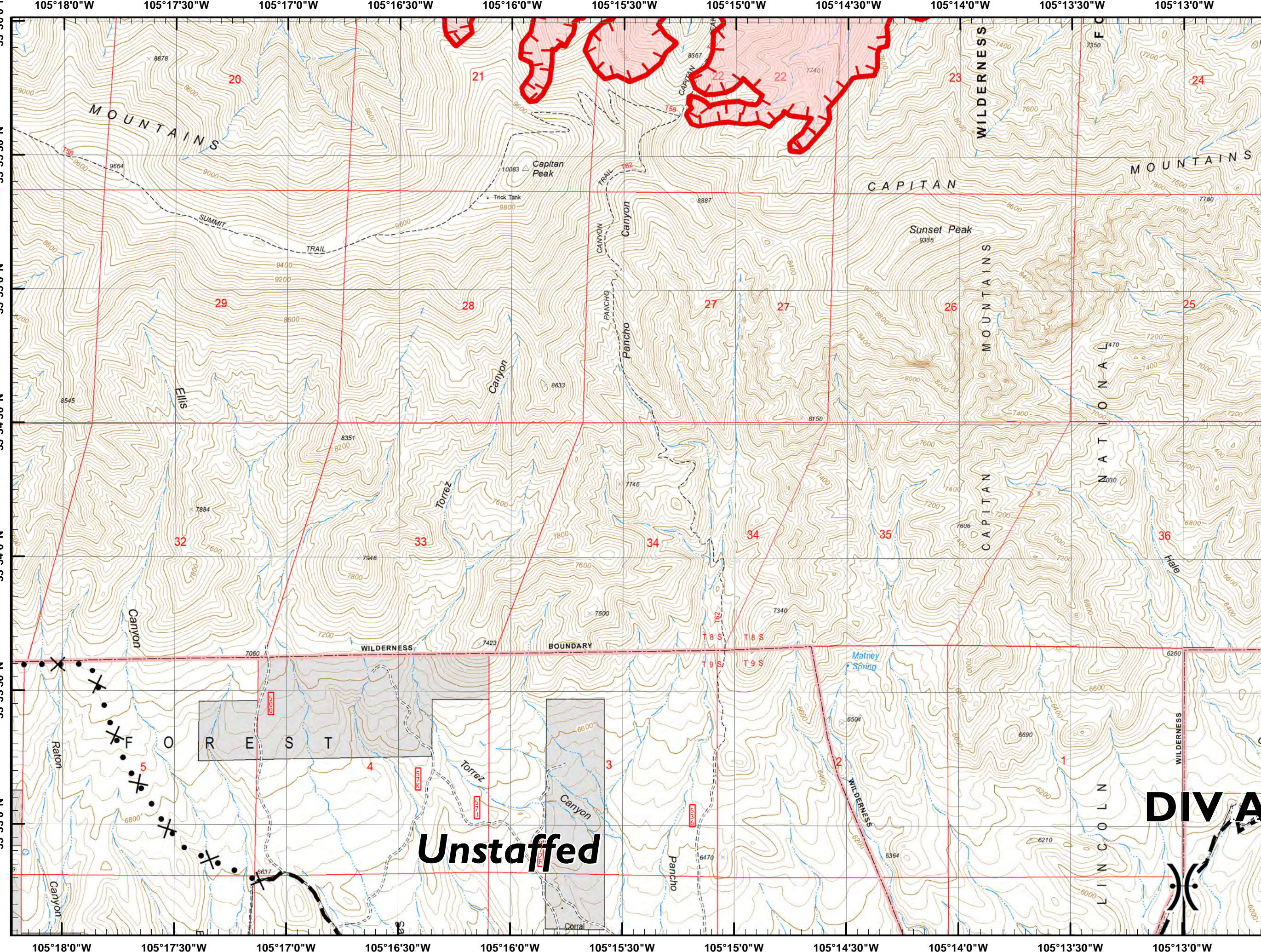


- Aerial Hazard
- Camp
- Dip Site
- Drop Point
- Gate
- Helispot
- Internet Access
- Mobile Weather Unit
- Repeater
- Safety Zone
- Water Source
- Value at Risk
- Division Break

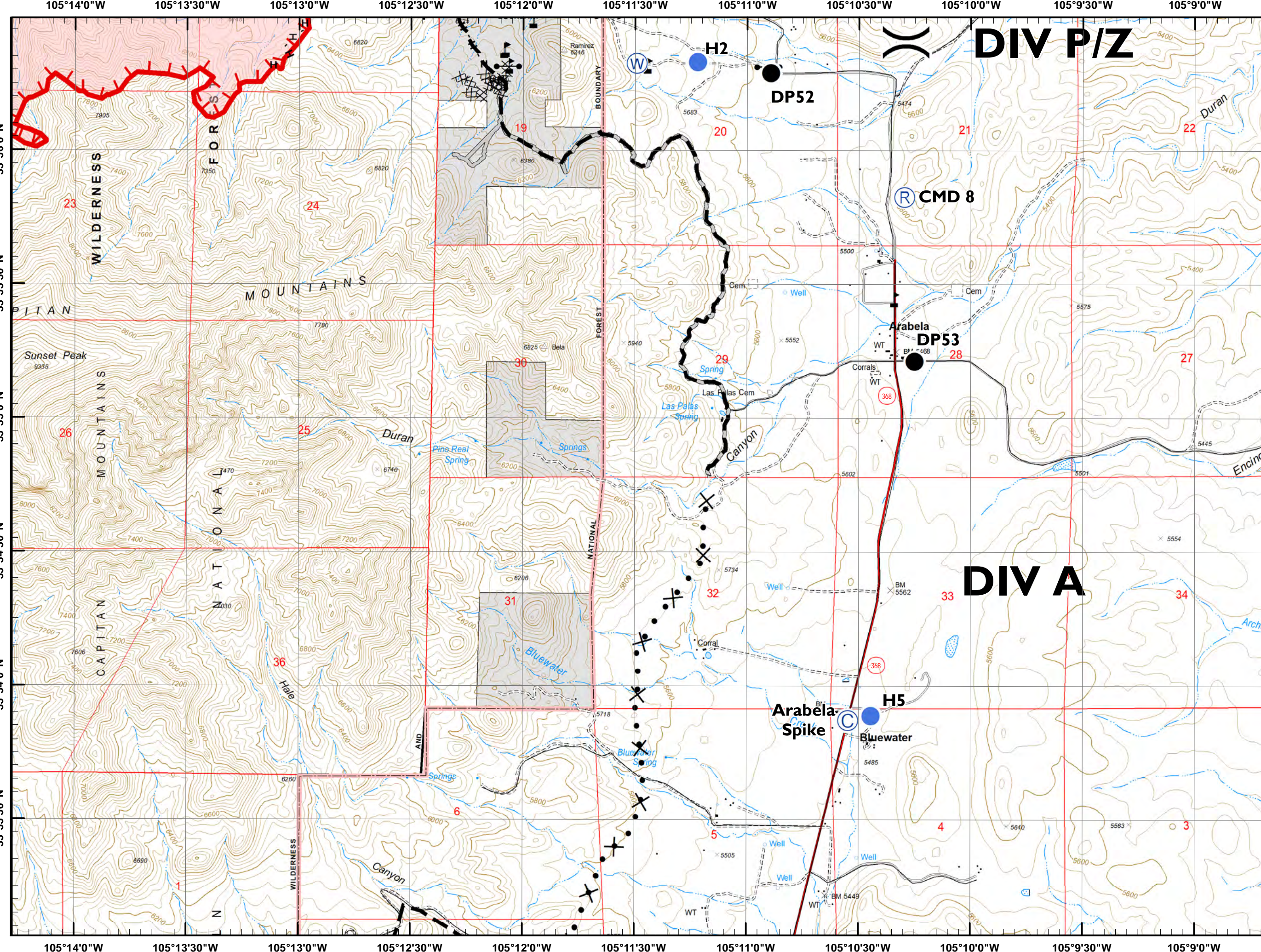
- Uncontrolled Fire Edge
- Completed Line
- Completed Dozer Line
- Completed Hand Line
- Road as Completed Line
- Access or Improved Road
- Line Break Completed
- Proposed Dozer Line
- Planned Fire Line
- Wildfire Daily Fire Perimeter
- National Forest



NAD 83 UTM Zone 13N  
 SW IMT 5 GIS 6/29/2019 7:21:19 PM



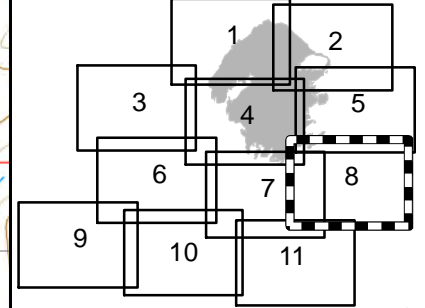




**Pine Lodge IAP**  
**NM-LNF-000249**  
**Day Operational Period**  
**6/30/2019**

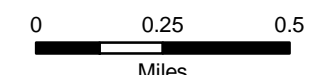


Page 8 of 11



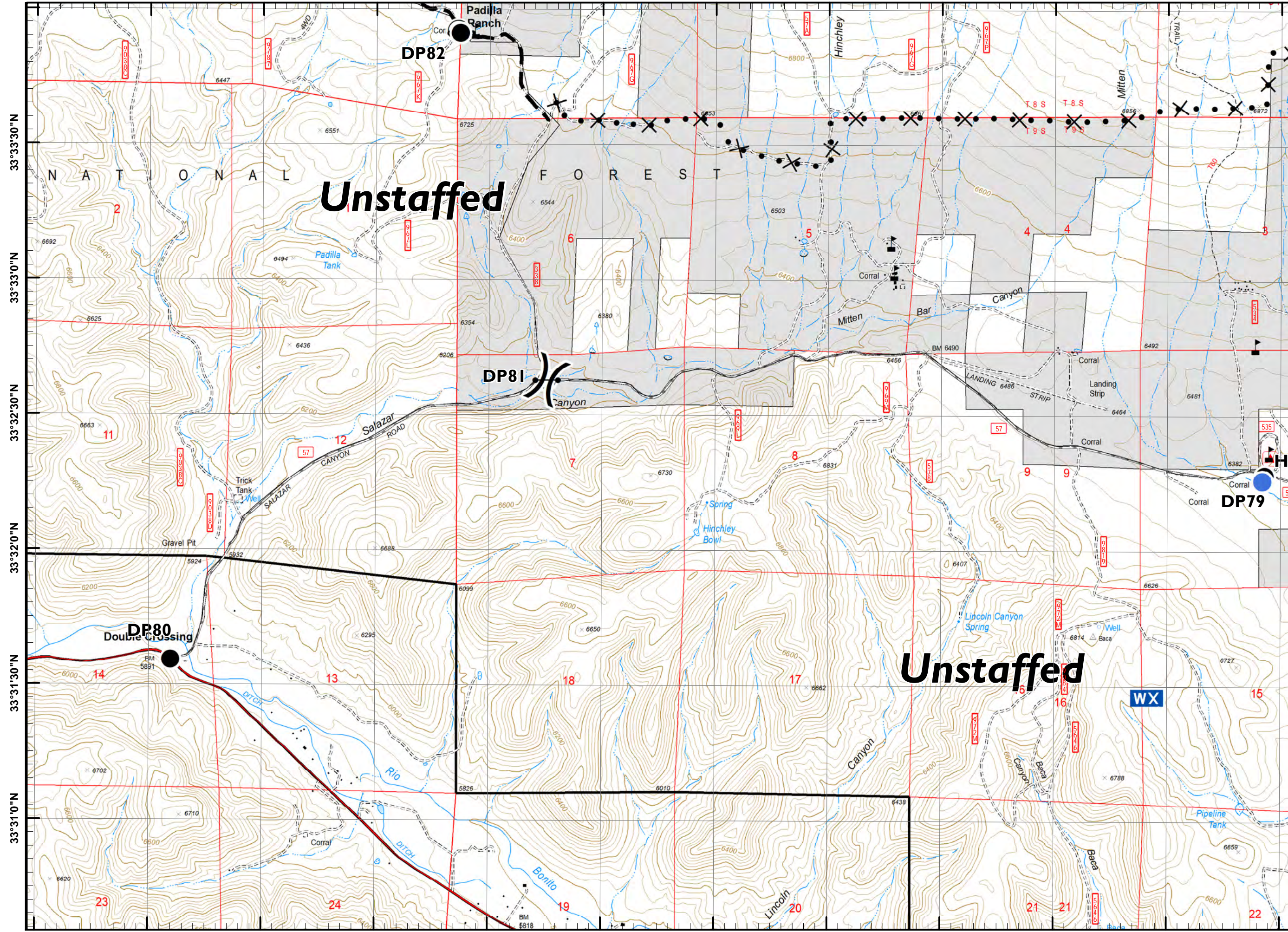
- Aerial Hazard
- Camp
- Dip Site
- Drop Point
- Gate
- Hellspot
- Internet Access
- Mobile Weather Unit
- Repeater
- Safety Zone
- Water Source
- Value at Risk
- Division Break

- Uncontrolled Fire Edge
- Completed Line
- Completed Dozer Line
- Completed Hand Line
- Road as Completed Line
- Access or Improved Road
- Line Break Completed
- Proposed Dozer Line
- Planned Fire Line
- Wildfire Daily Fire Perimeter
- National Forest



NAD 83 UTM Zone 13N  
 SW IMT 5 GIS 6/29/2019 7:22:33 PM

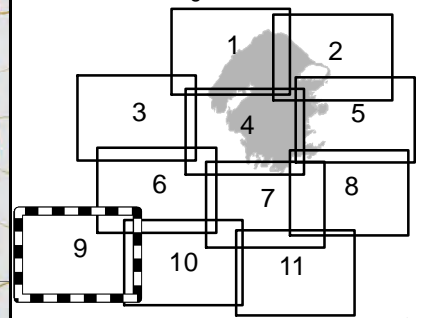
105°27'0"W 105°26'30"W 105°26'0"W 105°25'30"W 105°25'0"W 105°24'30"W 105°24'0"W 105°23'30"W 105°23'0"W 105°22'30"W 105°22'0"W 105°21'30"W



# Pine Lodge IAP NM-LNF-000249 Day Operational Period 6/30/2019

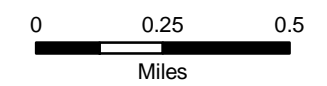


Page 9 of 11



- Aerial Hazard
- Camp
- Dip Site
- Drop Point
- Gate
- Hellsport
- Internet Access
- Mobile Weather Unit
- Repeater
- Safety Zone
- Water Source
- Value at Risk
- Division Break

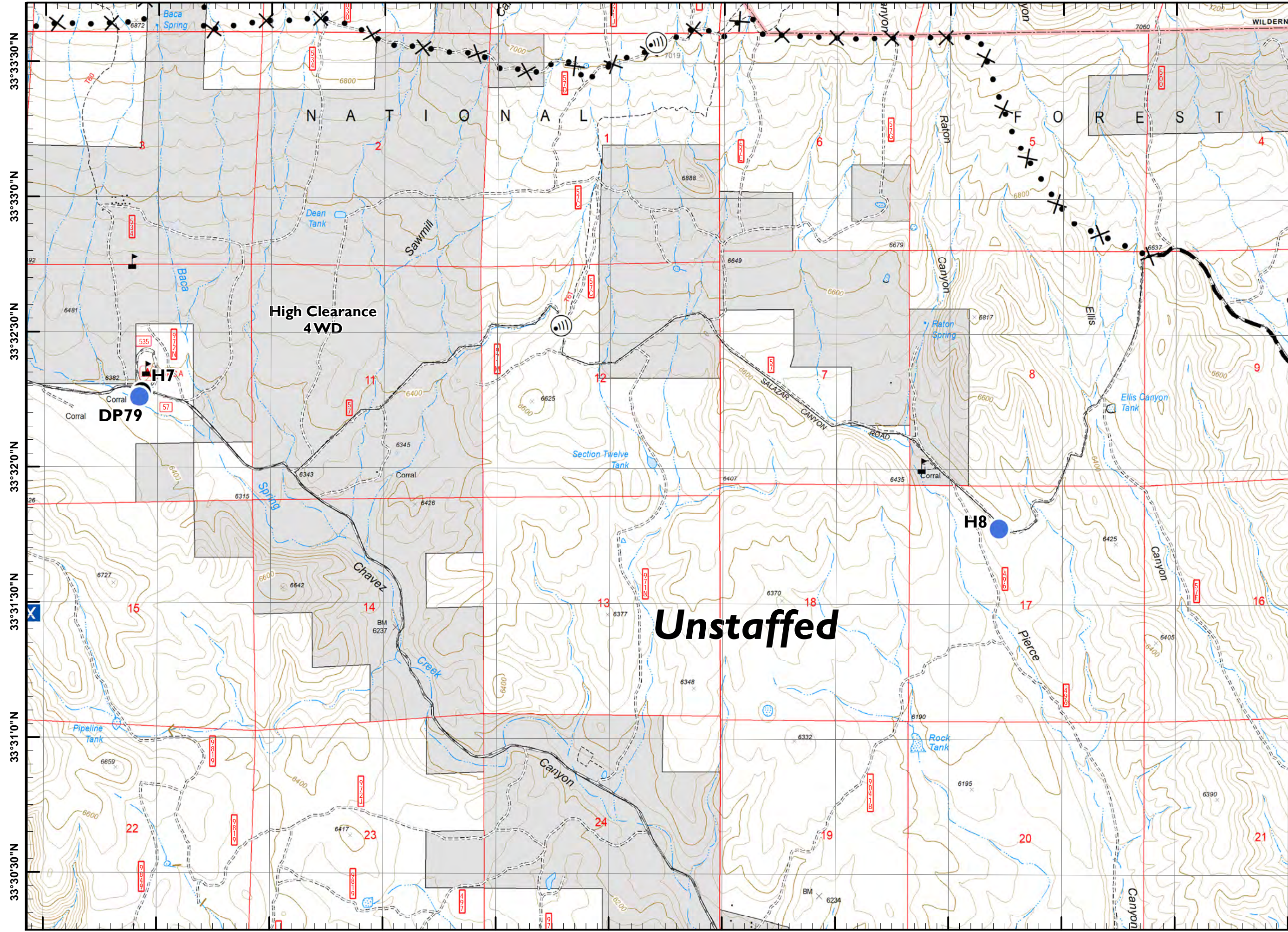
- Uncontrolled Fire Edge
- Completed Line
- Completed Dozer Line
- H - Completed Hand Line
- R - Road as Completed Line
- Access or Improved Road
- Line Break Completed
- Proposed Dozer Line
- Planned Fire Line
- Wildfire Daily Fire Perimeter
- National Forest



NAD 83 UTM Zone 13N  
SW IMT 5 GIS 6/29/2019 7:23:56 PM

105°27'0"W 105°26'30"W 105°26'0"W 105°25'30"W 105°25'0"W 105°24'30"W 105°24'0"W 105°23'30"W 105°23'0"W 105°22'30"W 105°22'0"W 105°21'30"W

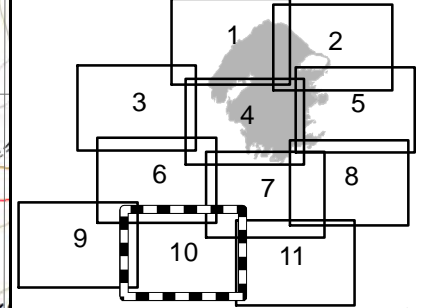
105°22'0"W 105°21'30"W 105°21'0"W 105°20'30"W 105°20'0"W 105°19'30"W 105°19'0"W 105°18'30"W 105°18'0"W 105°17'30"W 105°17'0"W 105°16'30"W



# Pine Lodge IAP NM-LNF-000249 Day Operational Period 6/30/2019

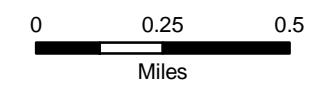


Page 10 of 11



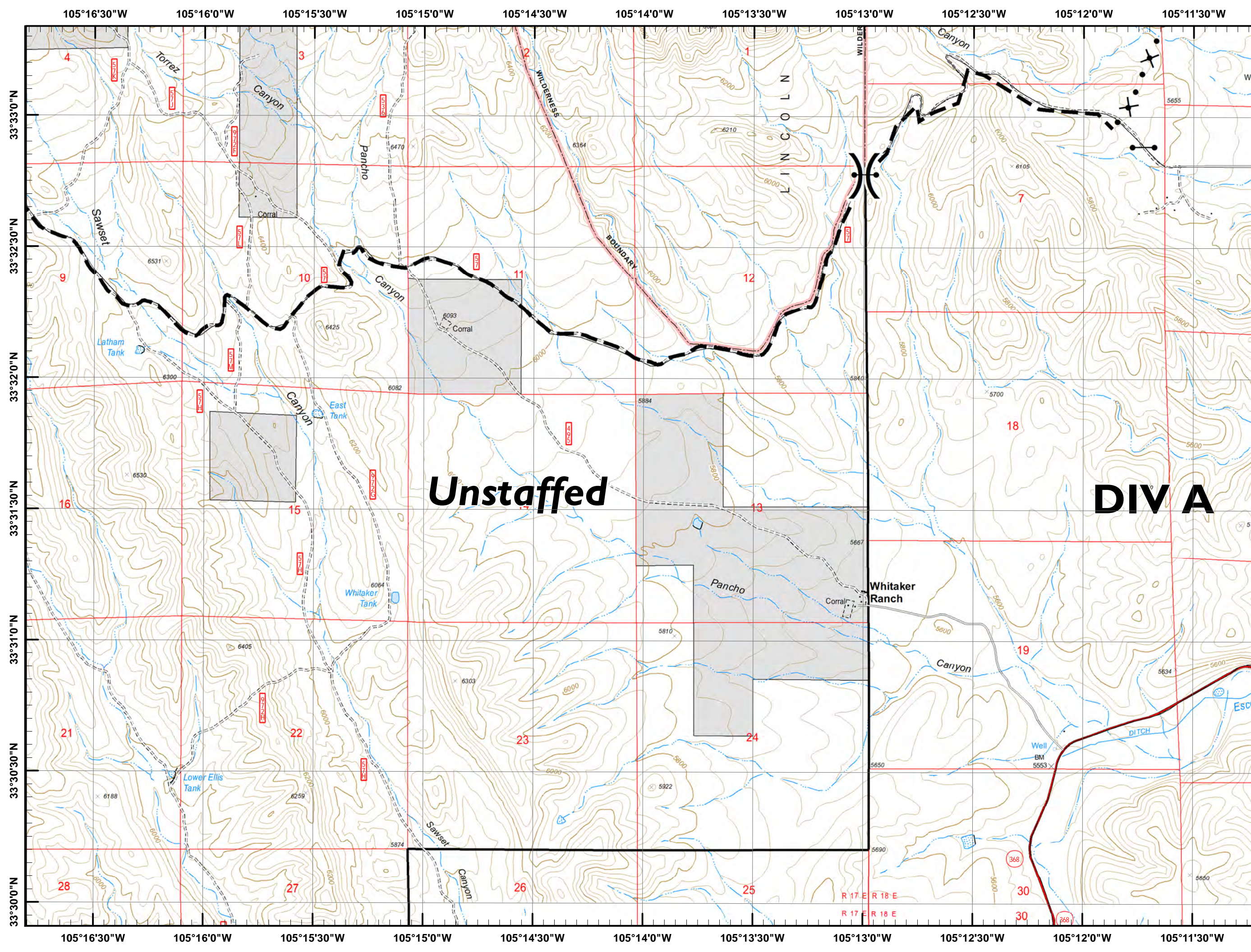
- Aerial Hazard
- Camp
- Dip Site
- Drop Point
- Gate
- Hellspot
- Internet Access
- Mobile Weather Unit
- Repeater
- Safety Zone
- Water Source
- Value at Risk
- Division Break

- Uncontrolled Fire Edge
- Completed Line
- Completed Dozer Line
- Completed Hand Line
- Road as Completed Line
- Access or Improved Road
- Line Break Completed
- Proposed Dozer Line
- Planned Fire Line
- Wildfire Daily Fire Perimeter
- National Forest



NAD 83 UTM Zone 13N  
SW IMT 5 GIS 6/29/2019 7:24:44 PM

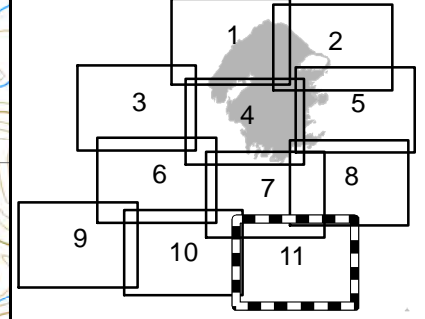
105°22'0"W 105°21'30"W 105°21'0"W 105°20'30"W 105°20'0"W 105°19'30"W 105°19'0"W 105°18'30"W 105°18'0"W 105°17'30"W 105°17'0"W 105°16'30"W



**Pine Lodge IAP**  
**NM-LNF-000249**  
**Day Operational Period**  
**6/30/2019**



Page 11 of 11

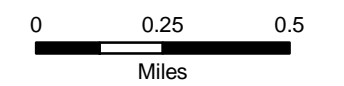


**Unstaffed**

**DIVA**

- Aerial Hazard
- Camp
- Dip Site
- Drop Point
- Gate
- Helispot
- Internet Access
- Mobile Weather Unit
- Repeater
- Safety Zone
- Water Source
- Value at Risk
- Division Break

- Uncontrolled Fire Edge
- Completed Line
- Completed Dozer Line
- Completed Hand Line
- Road as Completed Line
- Access or Improved Road
- Line Break Completed
- Proposed Dozer Line
- Planned Fire Line
- Wildfire Daily Fire Perimeter
- National Forest



NAD 83 UTM Zone 13N  
 SW IMT 5 GIS 6/29/2019 7:25:17 PM