

# Branch North

## Pine Lodge IAP Index NM-LNF-000249

Day Operational Periods  
7/1/2019 - 7/4/2019



GIS Acres 13,433  
6/29/2019 2346

Aerial Hazard

Dip Site

Drop Point

Gate

Helispot

Internet Access

WX Mobile Weather Unit

Repeater

Safety Zone

Water Source

Value at Risk

Division Break

Branch Break

Uncontrolled Fire Edge

Completed Line

Completed Dozer Line

Completed Hand Line

R - Road as Completed Line

Access or Improved Road

Proposed Dozer Line

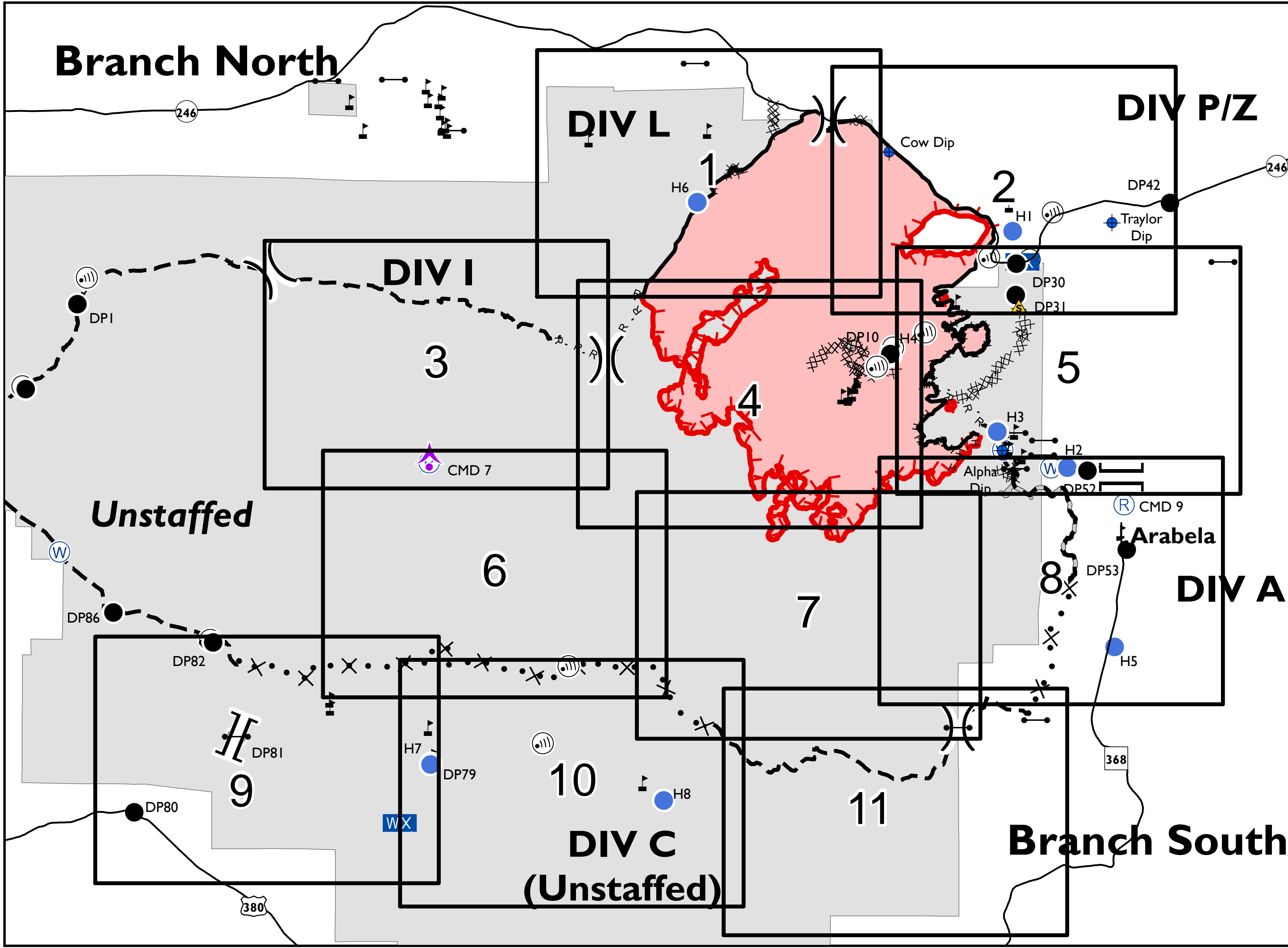
Planned Fire Line

Wildfire Daily Fire Perimeter

National Forest



NAD 83 UTM Zone 13N  
SW INT 5 GIS 6/30/2019 2:03:12 PM



**DIV C  
(Unstaffed)**

**Unstaffed**

# Branch South

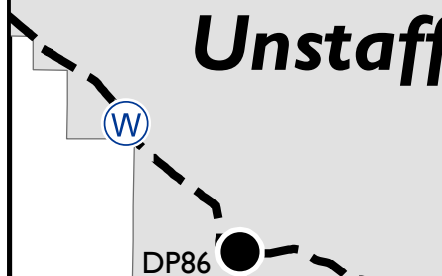
## DIV P/Z

## DIV L

## DIV I

## DIV A

## DIV C

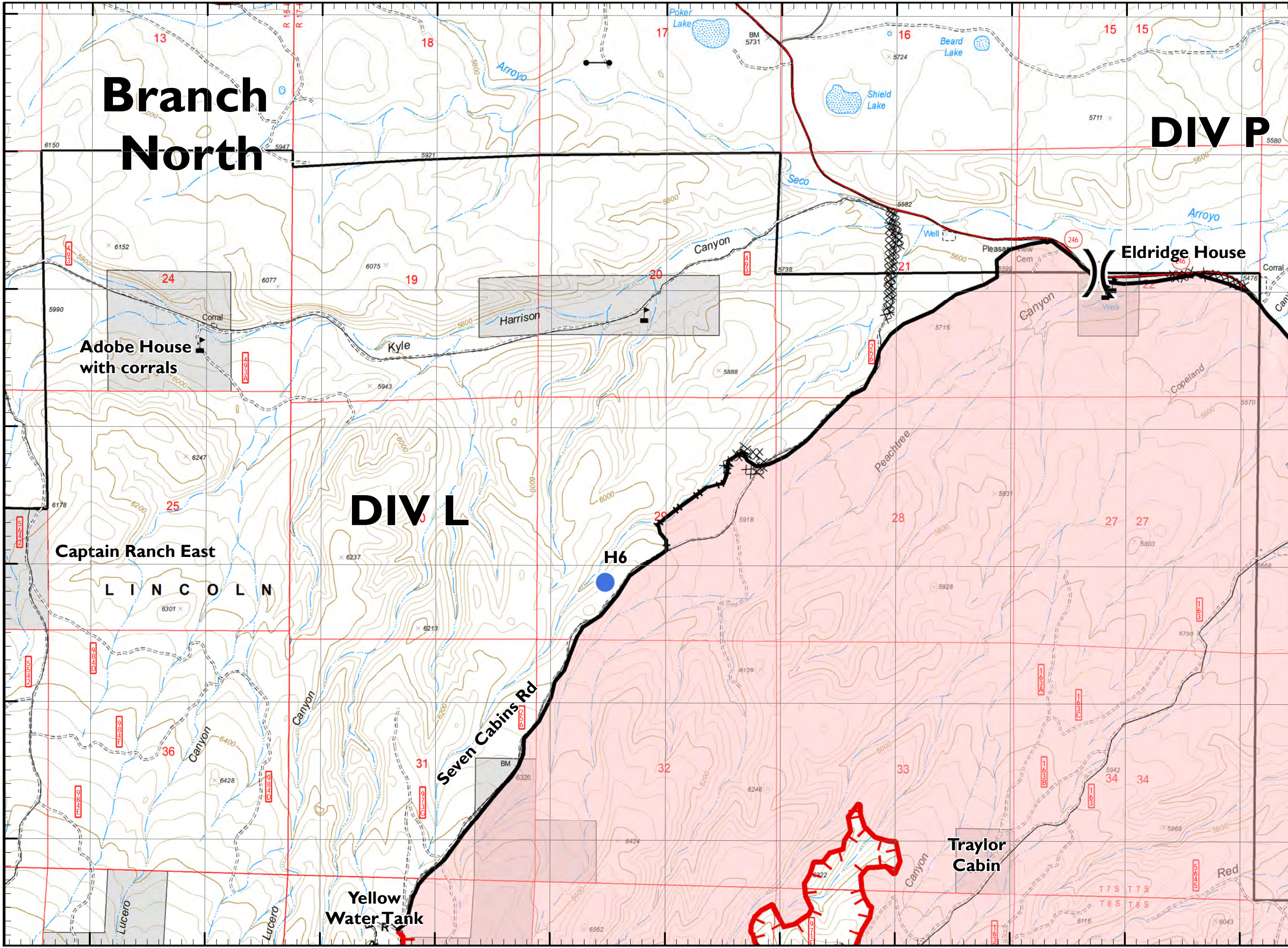
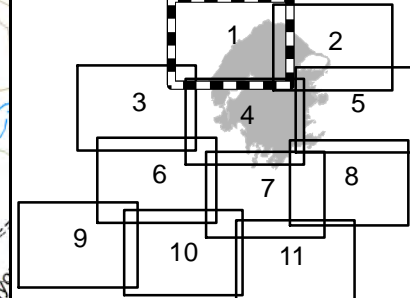




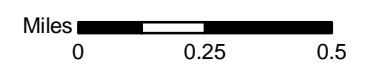
**Pine Lodge IAP**  
**NM-LNF-000249**  
**Day Operational Periods**  
**7/1/2019 - 7/4/2019**



Page 1 of 11



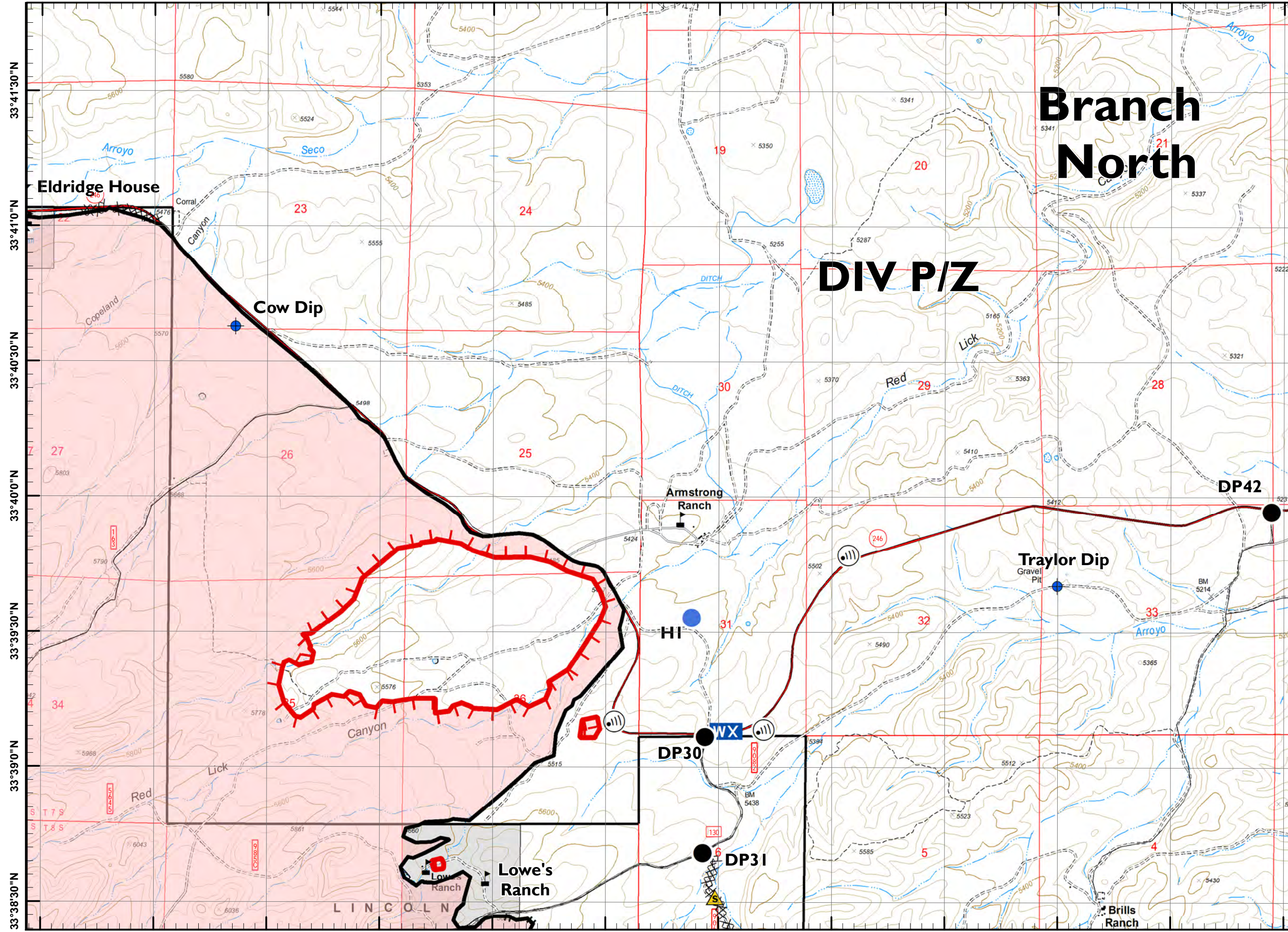
- Aerial Hazard
- Dip Site
- Drop Point
- Gate
- Helispot
- Internet Access
- Mobile Weather Unit
- Repeater
- Safety Zone
- Water Source
- Value at Risk
- Division Break
- Branch Break
- Uncontrolled Fire Edge
- Completed Line
- Completed Dozer Line
- Completed Hand Line
- R - Road as Completed Line
- Access or Improved Road
- Proposed Dozer Line
- Planned Fire Line
- Wildfire Daily Fire Perimeter



NAD 83 UTM Zone 13N  
 SW IMT 5 GIS 6/30/2019 1:36:52 PM



105°15'0"W 105°14'30"W 105°14'0"W 105°13'30"W 105°13'0"W 105°12'30"W 105°12'0"W 105°11'30"W 105°11'0"W 105°10'30"W 105°10'0"W 105°9'30"W



# Pine Lodge IAP

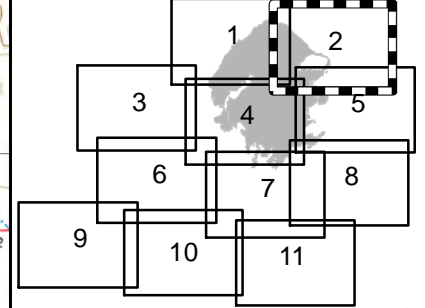
## NM-LNF-000249

### Day Operational Periods

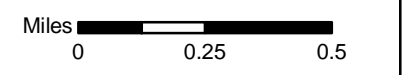
7/1/2019 - 7/4/2019



Page 2 of 11



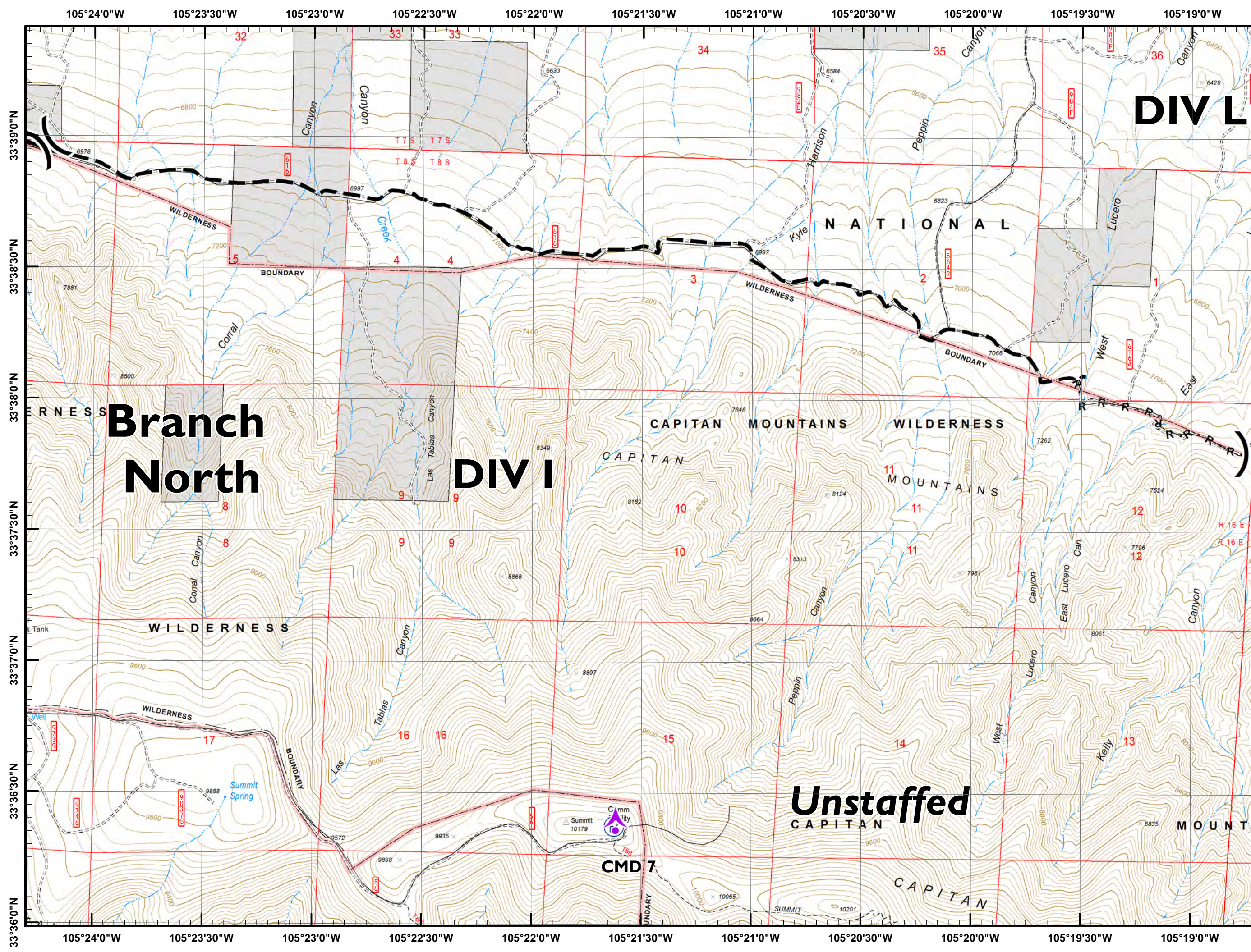
- Aerial Hazard
- Dip Site
- Drop Point
- Gate
- Helispot
- Internet Access
- Mobile Weather Unit
- Repeater
- Safety Zone
- Water Source
- Value at Risk
- Division Break
- Branch Break
- Uncontrolled Fire Edge
- Completed Line
- Completed Dozer Line
- Completed Hand Line
- Road as Completed Line
- Access or Improved Road
- Proposed Dozer Line
- Planned Fire Line
- Wildfire Daily Fire Perimeter



NAD 83 UTM Zone 13N  
SW IMT 5 GIS 6/30/2019 1:37:27 PM

105°15'0"W 105°14'30"W 105°14'0"W 105°13'30"W 105°13'0"W 105°12'30"W 105°12'0"W 105°11'30"W 105°11'0"W 105°10'30"W 105°10'0"W 105°9'30"W

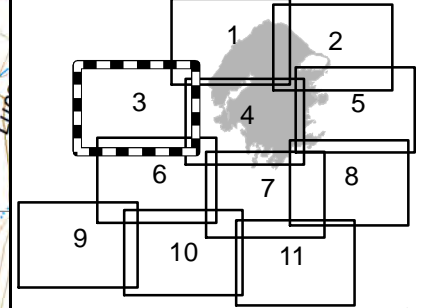




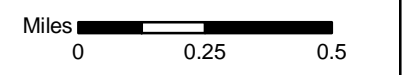
**Pine Lodge IAP**  
**NM-LNF-000249**  
**Day Operational Periods**  
**7/1/2019 - 7/4/2019**



Page 3 of 11

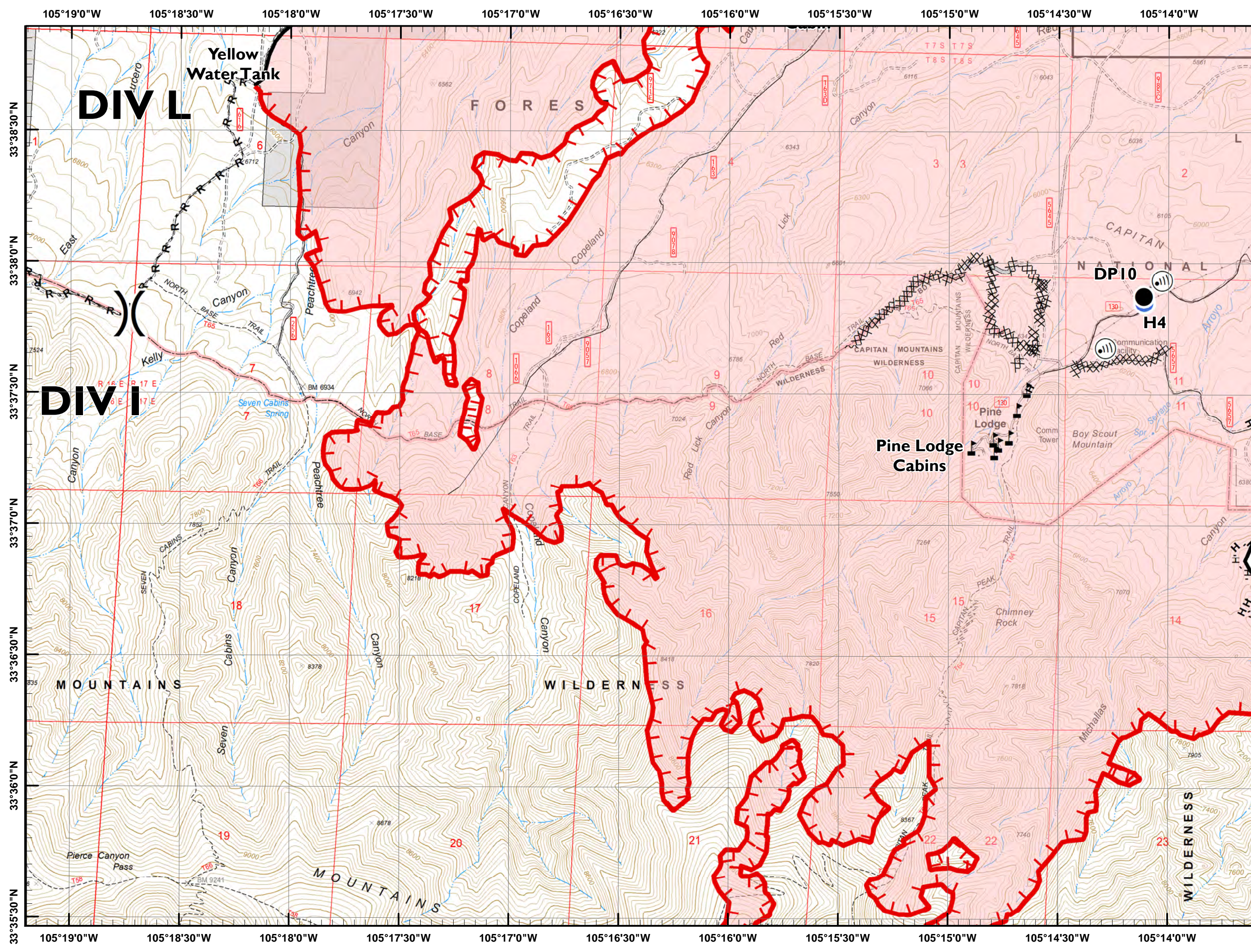


- Aerial Hazard
- Dip Site
- Drop Point
- Gate
- Helispot
- Internet Access
- Mobile Weather Unit
- Repeater
- Safety Zone
- Water Source
- Value at Risk
- Division Break
- Branch Break
- Uncontrolled Fire Edge
- Completed Line
- Completed Dozer Line
- H - Completed Hand Line
- R - Road as Completed Line
- Access or Improved Road
- Proposed Dozer Line
- Planned Fire Line
- Wildfire Daily Fire Perimeter



NAD 83 UTM Zone 13N  
 SW IMT 5 GIS 6/30/2019 1:38:03 PM

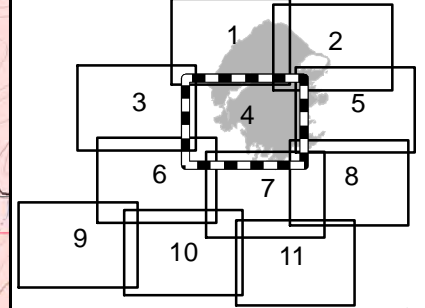




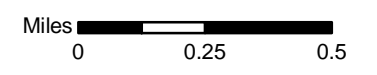
**Pine Lodge IAP**  
**NM-LNF-000249**  
**Day Operational Periods**  
**7/1/2019 - 7/4/2019**



Page 4 of 11



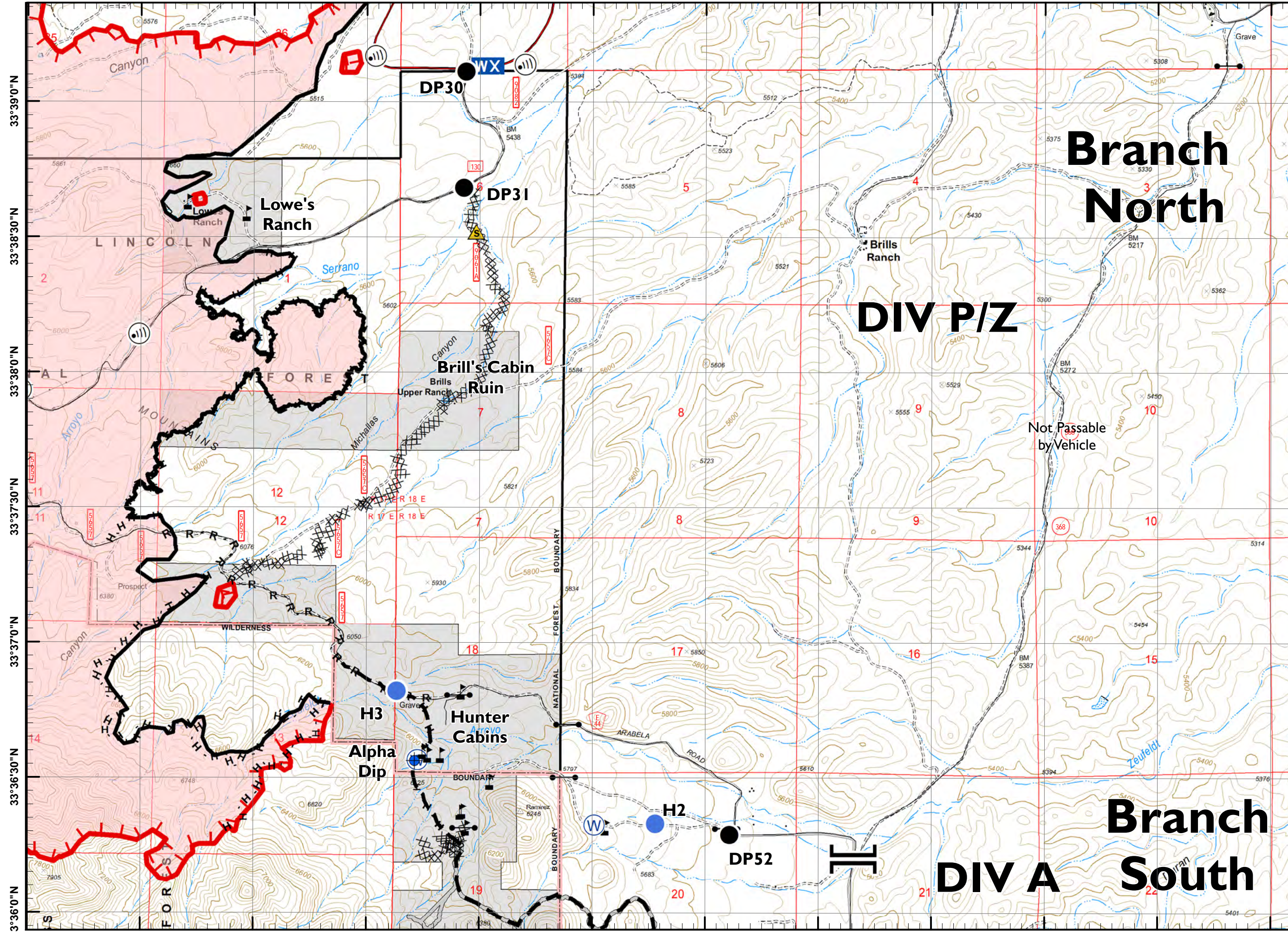
- Aerial Hazard
- Dip Site
- Drop Point
- Gate
- Helispot
- Internet Access
- Mobile Weather Unit
- Repeater
- Safety Zone
- Water Source
- Value at Risk
- Division Break
- Branch Break
- Uncontrolled Fire Edge
- Completed Line
- Completed Dozer Line
- H - Completed Hand Line
- R - Road as Completed Line
- Access or Improved Road
- Proposed Dozer Line
- Planned Fire Line
- Wildfire Daily Fire Perimeter



NAD 83 UTM Zone 13N  
 SW IMT 5 GIS 6/30/2019 1:38:43 PM



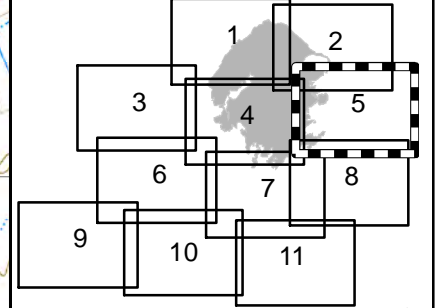
105°14'0"W 105°13'30"W 105°13'0"W 105°12'30"W 105°12'0"W 105°11'30"W 105°11'0"W 105°10'30"W 105°10'0"W 105°9'30"W 105°9'0"W 105°8'30"W



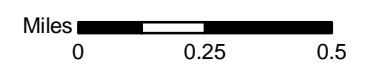
# Pine Lodge IAP NM-LNF-000249 Day Operational Periods 7/1/2019 - 7/4/2019



Page 5 of 11



- Aerial Hazard
- Dip Site
- Drop Point
- Gate
- Helispot
- Internet Access
- Mobile Weather Unit
- Repeater
- Safety Zone
- Water Source
- Value at Risk
- Division Break
- Branch Break
- Uncontrolled Fire Edge
- Completed Line
- Completed Dozer Line
- H - Completed Hand Line
- R - Road as Completed Line
- Access or Improved Road
- Proposed Dozer Line
- Planned Fire Line
- Wildfire Daily Fire Perimeter



NAD 83 UTM Zone 13N  
SW IMT 5 GIS 6/30/2019 1:39:21 PM

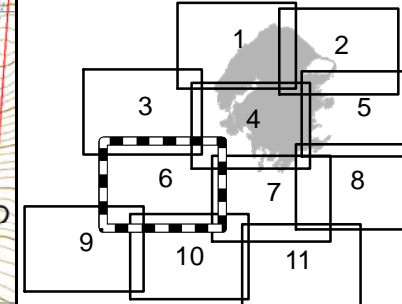
33°39'0"N 33°38'30"N 33°38'0"N 33°37'30"N 33°37'0"N 33°36'30"N 33°36'0"N 105°13'30"W 105°13'0"W 105°12'30"W 105°12'0"W 105°11'30"W 105°11'0"W 105°10'30"W 105°10'0"W 105°9'30"W 105°9'0"W 105°8'30"W



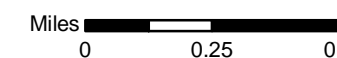
**Pine Lodge IAP**  
**NM-LNF-000249**  
**Day Operational Periods**  
**7/1/2019 - 7/4/2019**



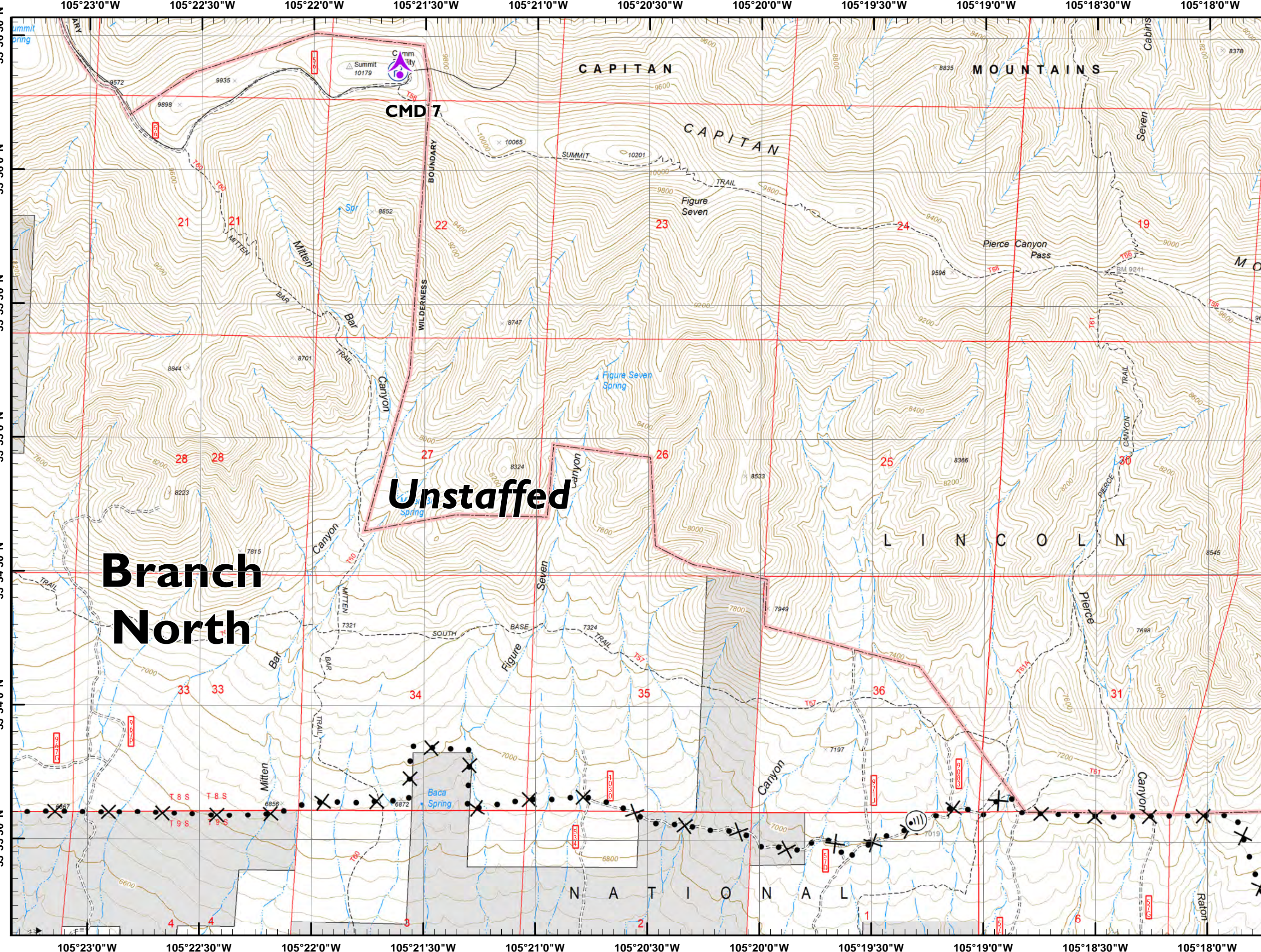
Page 6 of 11



- Aerial Hazard
- Dip Site
- Drop Point
- Gate
- Helispot
- Internet Access
- Mobile Weather Unit
- Repeater
- Safety Zone
- Water Source
- Value at Risk
- Division Break
- Branch Break
- Uncontrolled Fire Edge
- Completed Line
- Completed Dozer Line
- H - Completed Hand Line
- R - Road as Completed Line
- Access or Improved Road
- Proposed Dozer Line
- Planned Fire Line
- Wildfire Daily Fire Perimeter



NAD 83 UTM Zone 13N  
 SW IMT 5 GIS 6/30/2019 1:39:59 PM



**Unstaffed**

**Branch North**

CAPITAN MOUNTAINS

CAPITAN

L I N C O L N

N A T I O N A L

CMD 7

BOUNDARY

WILDERNESS

SOUTH

BASE

TRAIL

TRAIL

TRAIL

TRAIL

TRAIL

TRAIL

TRAIL

TRAIL

TRAIL

TRAIL

TRAIL

TRAIL

TRAIL

TRAIL

TRAIL

TRAIL

TRAIL

TRAIL

TRAIL

TRAIL

TRAIL

TRAIL

TRAIL

TRAIL

TRAIL

TRAIL

TRAIL

TRAIL

TRAIL

TRAIL

TRAIL

TRAIL

TRAIL

TRAIL

TRAIL

TRAIL

TRAIL

TRAIL

TRAIL

TRAIL

TRAIL

TRAIL

TRAIL

TRAIL

TRAIL

TRAIL

TRAIL

TRAIL

TRAIL

TRAIL

TRAIL

TRAIL

TRAIL

TRAIL

TRAIL

TRAIL

TRAIL

TRAIL

TRAIL

TRAIL

TRAIL

TRAIL

TRAIL

TRAIL

TRAIL

TRAIL

TRAIL

TRAIL

TRAIL

TRAIL

TRAIL

TRAIL

TRAIL

TRAIL

TRAIL

TRAIL

TRAIL

TRAIL

TRAIL

TRAIL

TRAIL

TRAIL

TRAIL

TRAIL

TRAIL

TRAIL

TRAIL

TRAIL

TRAIL

TRAIL

TRAIL

TRAIL

TRAIL

TRAIL

TRAIL

TRAIL

TRAIL

TRAIL

TRAIL

TRAIL

TRAIL

TRAIL

TRAIL

TRAIL

TRAIL

TRAIL

TRAIL

TRAIL

TRAIL

TRAIL

TRAIL

TRAIL

TRAIL

TRAIL

TRAIL

TRAIL

TRAIL

TRAIL

TRAIL

TRAIL

TRAIL

TRAIL

TRAIL

TRAIL

TRAIL

TRAIL

TRAIL

TRAIL

TRAIL

TRAIL

TRAIL

TRAIL

TRAIL

TRAIL

TRAIL

TRAIL

TRAIL

TRAIL

TRAIL

TRAIL

TRAIL

TRAIL

TRAIL

TRAIL

TRAIL

TRAIL

TRAIL

TRAIL

TRAIL

TRAIL

TRAIL

TRAIL

TRAIL

TRAIL

TRAIL

TRAIL

TRAIL

TRAIL

TRAIL

TRAIL

TRAIL

TRAIL

TRAIL

TRAIL

TRAIL

TRAIL

TRAIL

TRAIL

TRAIL

TRAIL

TRAIL

TRAIL

TRAIL

TRAIL

TRAIL

TRAIL

TRAIL

TRAIL

TRAIL

TRAIL

TRAIL

TRAIL

TRAIL

TRAIL

TRAIL

TRAIL

TRAIL

TRAIL

TRAIL

TRAIL

TRAIL

TRAIL

TRAIL

TRAIL

TRAIL

TRAIL

TRAIL

TRAIL

TRAIL

TRAIL

TRAIL

TRAIL

TRAIL

TRAIL

TRAIL

TRAIL

TRAIL

TRAIL

TRAIL

TRAIL

TRAIL

TRAIL

TRAIL

TRAIL

TRAIL

TRAIL

TRAIL

TRAIL

TRAIL

TRAIL

TRAIL

TRAIL

TRAIL

TRAIL

TRAIL

TRAIL

TRAIL

TRAIL

TRAIL

TRAIL

TRAIL

TRAIL

TRAIL

TRAIL

TRAIL

TRAIL

TRAIL

TRAIL

TRAIL

TRAIL

TRAIL

TRAIL

TRAIL

TRAIL

TRAIL

TRAIL

TRAIL

TRAIL

TRAIL

TRAIL

TRAIL

TRAIL

TRAIL

TRAIL

TRAIL

TRAIL

TRAIL

TRAIL

TRAIL

TRAIL

TRAIL

TRAIL

TRAIL

TRAIL

TRAIL

TRAIL

TRAIL

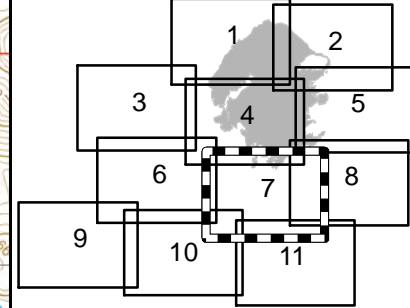
TRAIL



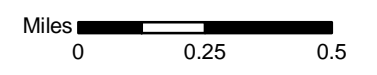
**Pine Lodge IAP**  
**NM-LNF-000249**  
**Day Operational Periods**  
**7/1/2019 - 7/4/2019**



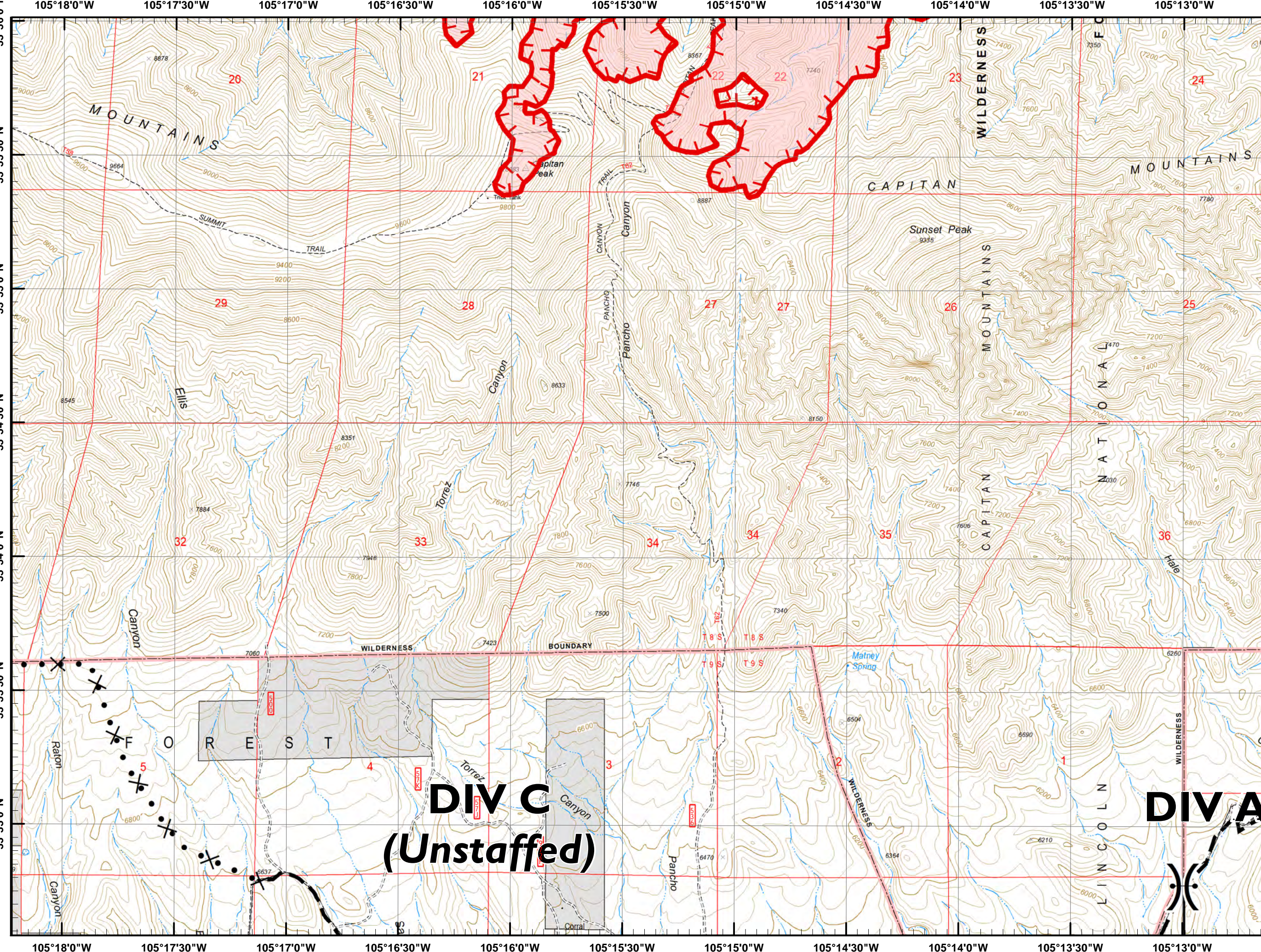
Page 7 of 11



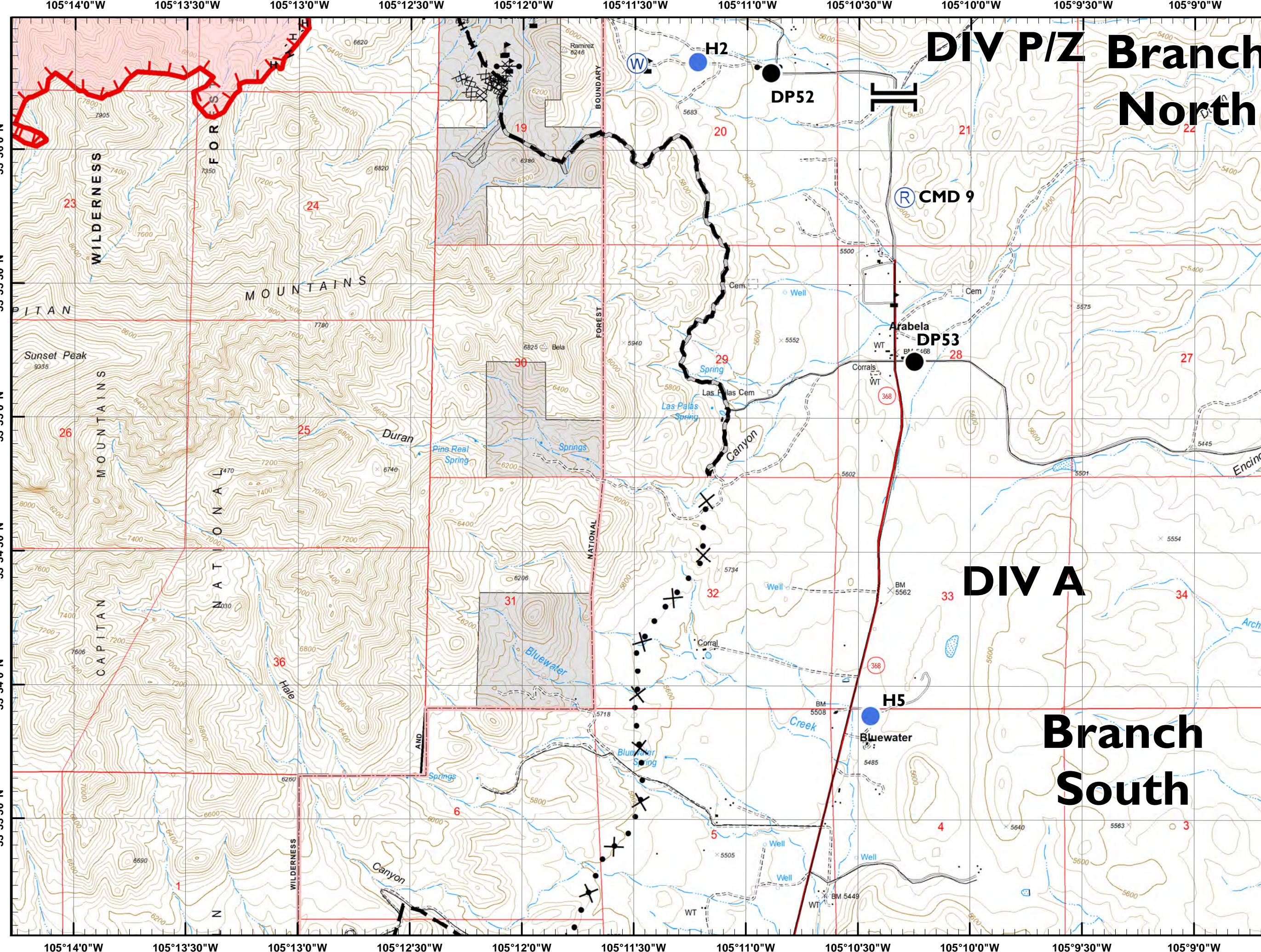
- Aerial Hazard
- Dip Site
- Drop Point
- Gate
- Helispot
- Internet Access
- Mobile Weather Unit
- Repeater
- Safety Zone
- Water Source
- Value at Risk
- Division Break
- Branch Break
- Uncontrolled Fire Edge
- Completed Line
- Completed Dozer Line
- H - Completed Hand Line
- R - Road as Completed Line
- Access or Improved Road
- Proposed Dozer Line
- Planned Fire Line
- Wildfire Daily Fire Perimeter



NAD 83 UTM Zone 13N  
 SW IMT 5 GIS 6/30/2019 1:40:40 PM



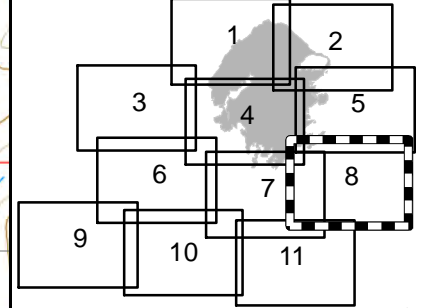




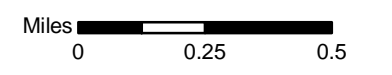
**Pine Lodge IAP**  
**NM-LNF-000249**  
 Day Operational Periods  
 7/1/2019 - 7/4/2019



Page 8 of 11



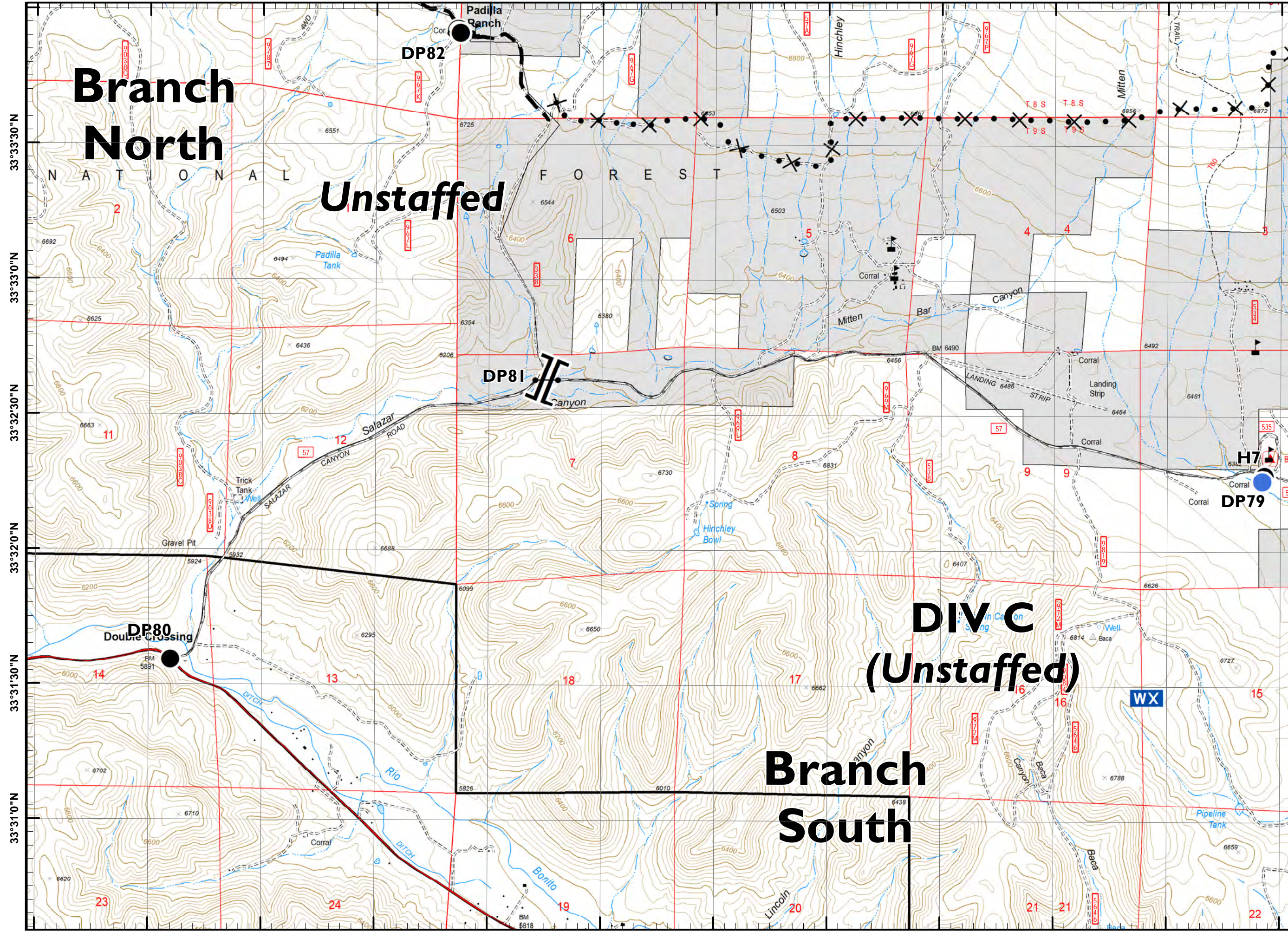
- Aerial Hazard
- Dip Site
- Drop Point
- Gate
- Helispot
- Internet Access
- Mobile Weather Unit
- Repeater
- Safety Zone
- Water Source
- Value at Risk
- Division Break
- Branch Break
- Uncontrolled Fire Edge
- Completed Line
- Completed Dozer Line
- H - Completed Hand Line
- R - Road as Completed Line
- Access or Improved Road
- Proposed Dozer Line
- Planned Fire Line
- Wildfire Daily Fire Perimeter



NAD 83 UTM Zone 13N  
 SW IMT 5 GIS 6/30/2019 1:41:21 PM



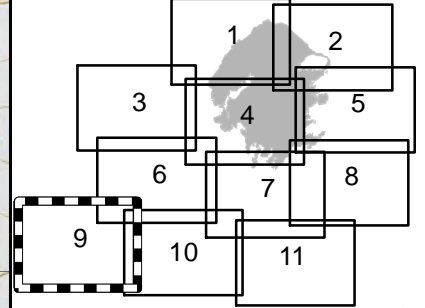
105°27'0"W 105°26'30"W 105°26'0"W 105°25'30"W 105°25'0"W 105°24'30"W 105°24'0"W 105°23'30"W 105°23'0"W 105°22'30"W 105°22'0"W 105°21'30"W



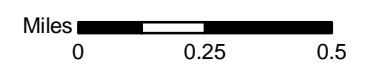
### Pine Lodge IAP NM-LNF-000249 Day Operational Periods 7/1/2019 - 7/4/2019



Page 9 of 11



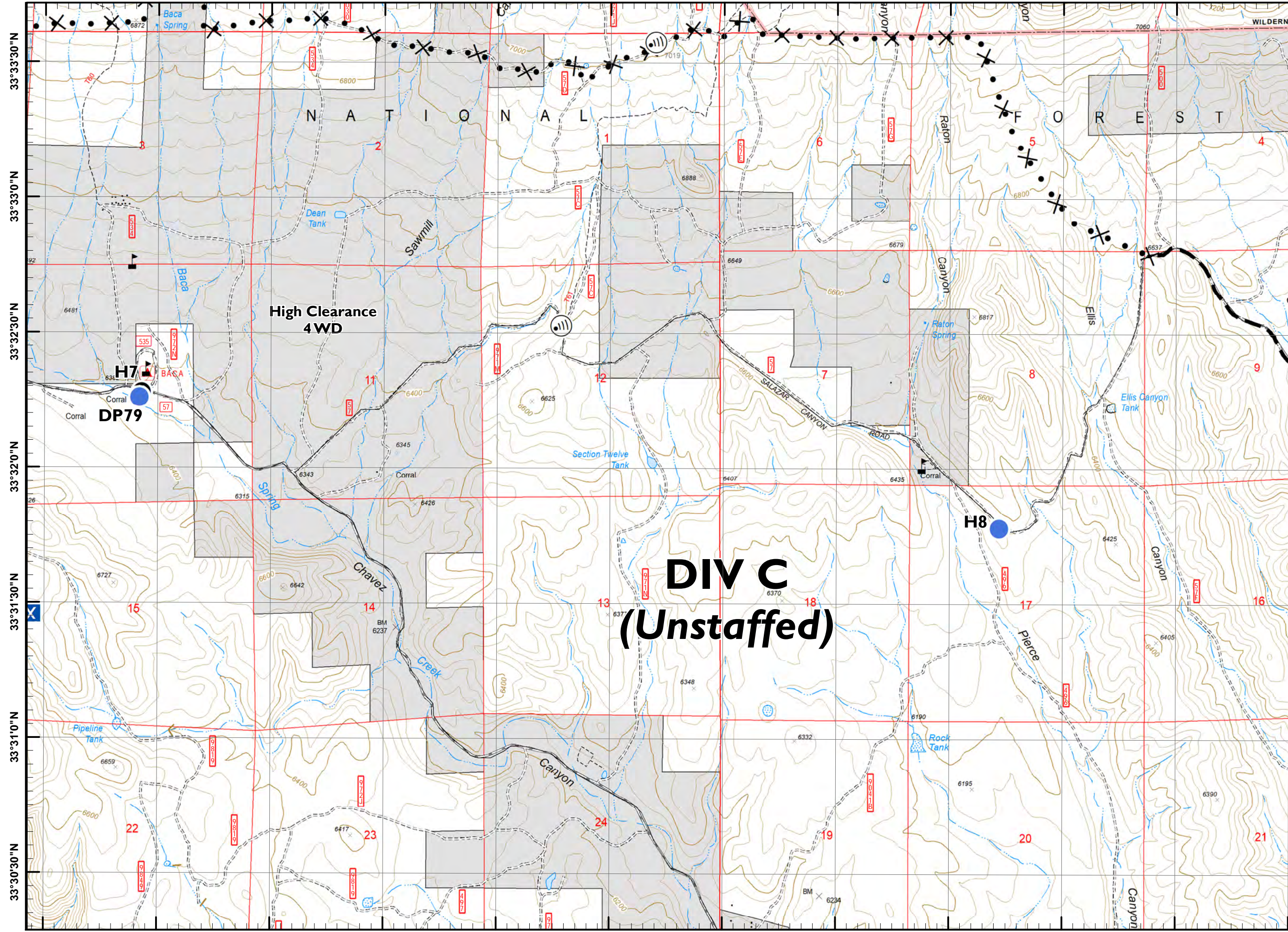
- Aerial Hazard
- Dip Site
- Drop Point
- Gate
- Helispot
- Internet Access
- Mobile Weather Unit
- Repeater
- Safety Zone
- Water Source
- Value at Risk
- Division Break
- Branch Break
- Uncontrolled Fire Edge
- Completed Line
- Completed Dozer Line
- Completed Hand Line
- Road as Completed Line
- Access or Improved Road
- Proposed Dozer Line
- Planned Fire Line
- Wildfire Daily Fire Perimeter



NAD 83 UTM Zone 13N  
SW IMT 5 GIS 6/30/2019 1:41:58 PM

105°27'0"W 105°26'30"W 105°26'0"W 105°25'30"W 105°25'0"W 105°24'30"W 105°24'0"W 105°23'30"W 105°23'0"W 105°22'30"W 105°22'0"W 105°21'30"W

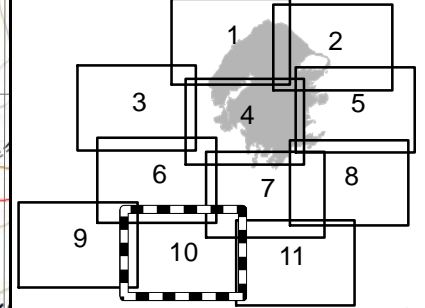




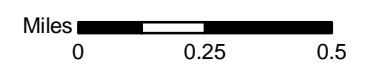
### Pine Lodge IAP NM-LNF-000249 Day Operational Periods 7/1/2019 - 7/4/2019



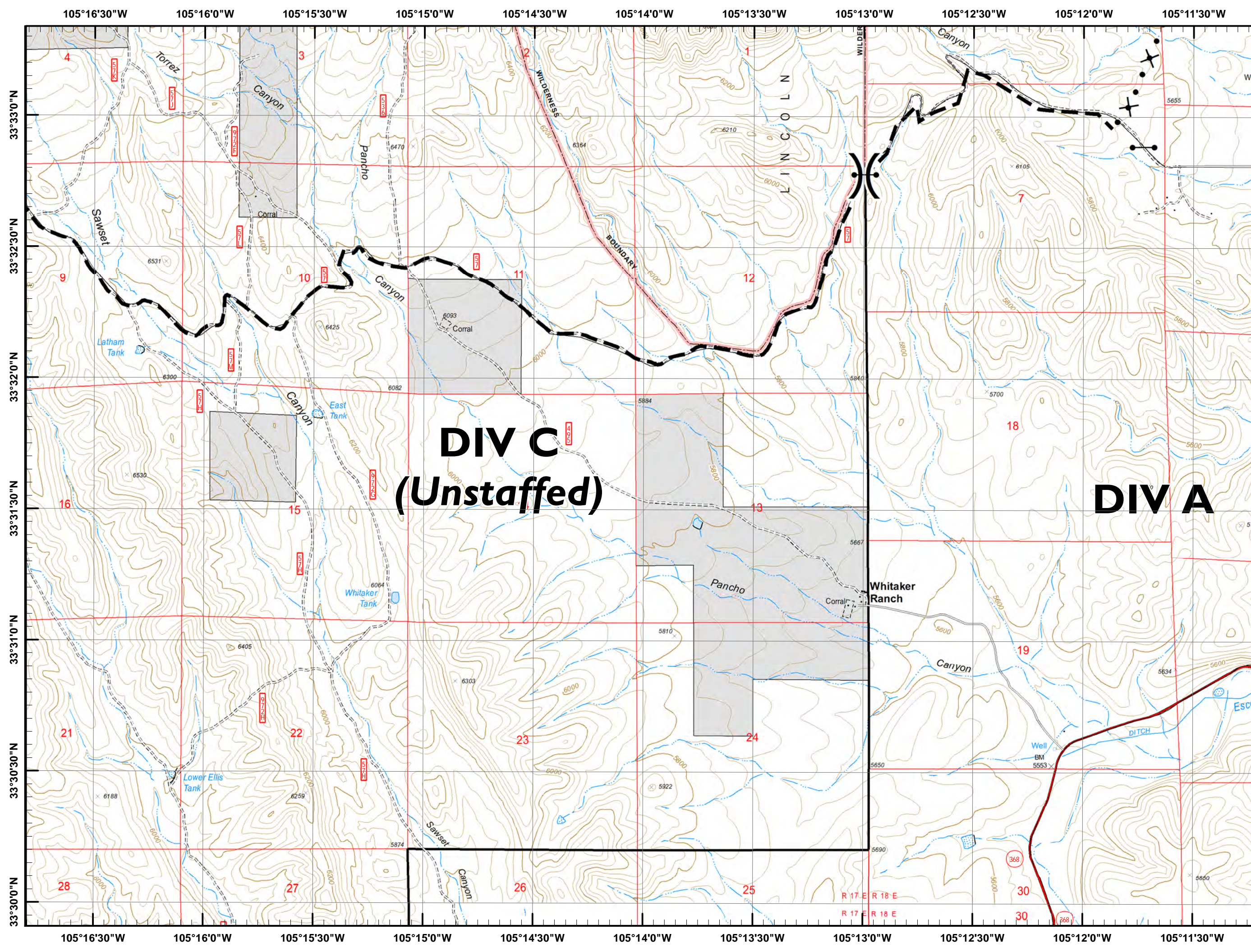
Page 10 of 11



- Aerial Hazard
- Dip Site
- Drop Point
- Gate
- Helispot
- Internet Access
- Mobile Weather Unit
- Repeater
- Safety Zone
- Water Source
- Value at Risk
- Division Break
- Branch Break
- Uncontrolled Fire Edge
- Completed Line
- Completed Dozer Line
- Completed Hand Line
- Road as Completed Line
- Access or Improved Road
- Proposed Dozer Line
- Planned Fire Line
- Wildfire Daily Fire Perimeter



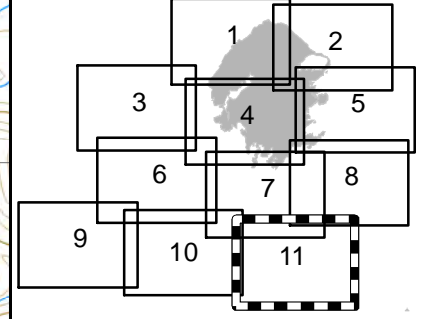




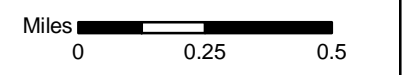
**Pine Lodge IAP**  
**NM-LNF-000249**  
**Day Operational Periods**  
**7/1/2019 - 7/4/2019**



Page 11 of 11



- Aerial Hazard
- Dip Site
- Drop Point
- Gate
- Helispot
- Internet Access
- Mobile Weather Unit
- Repeater
- Safety Zone
- Water Source
- Value at Risk
- Division Break
- Branch Break
- Uncontrolled Fire Edge
- Completed Line
- Completed Dozer Line
- Completed Hand Line
- Road as Completed Line
- Access or Improved Road
- Proposed Dozer Line
- Planned Fire Line
- Wildfire Daily Fire Perimeter



NAD 83 UTM Zone 13N  
 SW IMT 5 GIS 6/30/2019 1:43:07 PM