






Roberts Fire Severity Map

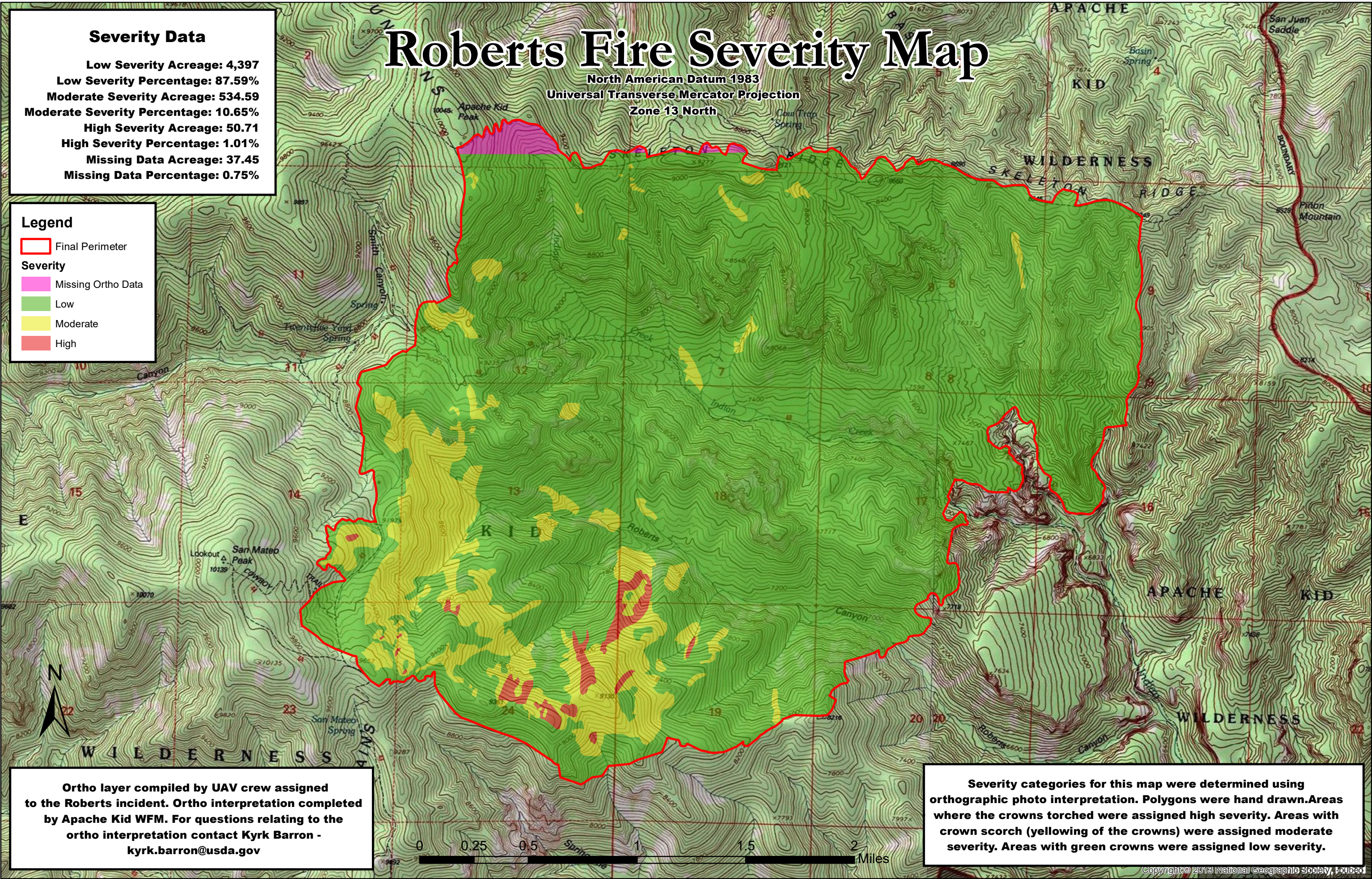
North American Datum 1983
Universal Transverse Mercator Projection
Zone 13 North

Severity Data

Low Severity Acreage: 4,397
Low Severity Percentage: 87.59%
Moderate Severity Acreage: 534.59
Moderate Severity Percentage: 10.65%
High Severity Acreage: 50.71
High Severity Percentage: 1.01%
Missing Data Acreage: 37.45
Missing Data Percentage: 0.75%

Legend

-  Final Perimeter
- Severity**
-  Missing Ortho Data
-  Low
-  Moderate
-  High



Ortho layer compiled by UAV crew assigned to the Roberts incident. Ortho interpretation completed by Apache Kid WFM. For questions relating to the ortho interpretation contact Kyrk Barron - kyrk.barron@usda.gov

Severity categories for this map were determined using orthographic photo interpretation. Polygons were hand drawn. Areas where the crowns torched were assigned high severity. Areas with crown scorch (yellowing of the crowns) were assigned moderate severity. Areas with green crowns were assigned low severity.