

107°26'0"W 107°25'0"W 107°24'0"W 107°23'0"W 107°22'0"W 107°21'0"W

ROBERTS FIRE
NM-CIF-000143
Infrared Interpretation
Date of Imagery: 07/22/2019 0155 MDT
4,045 Acres



33°38'0"N

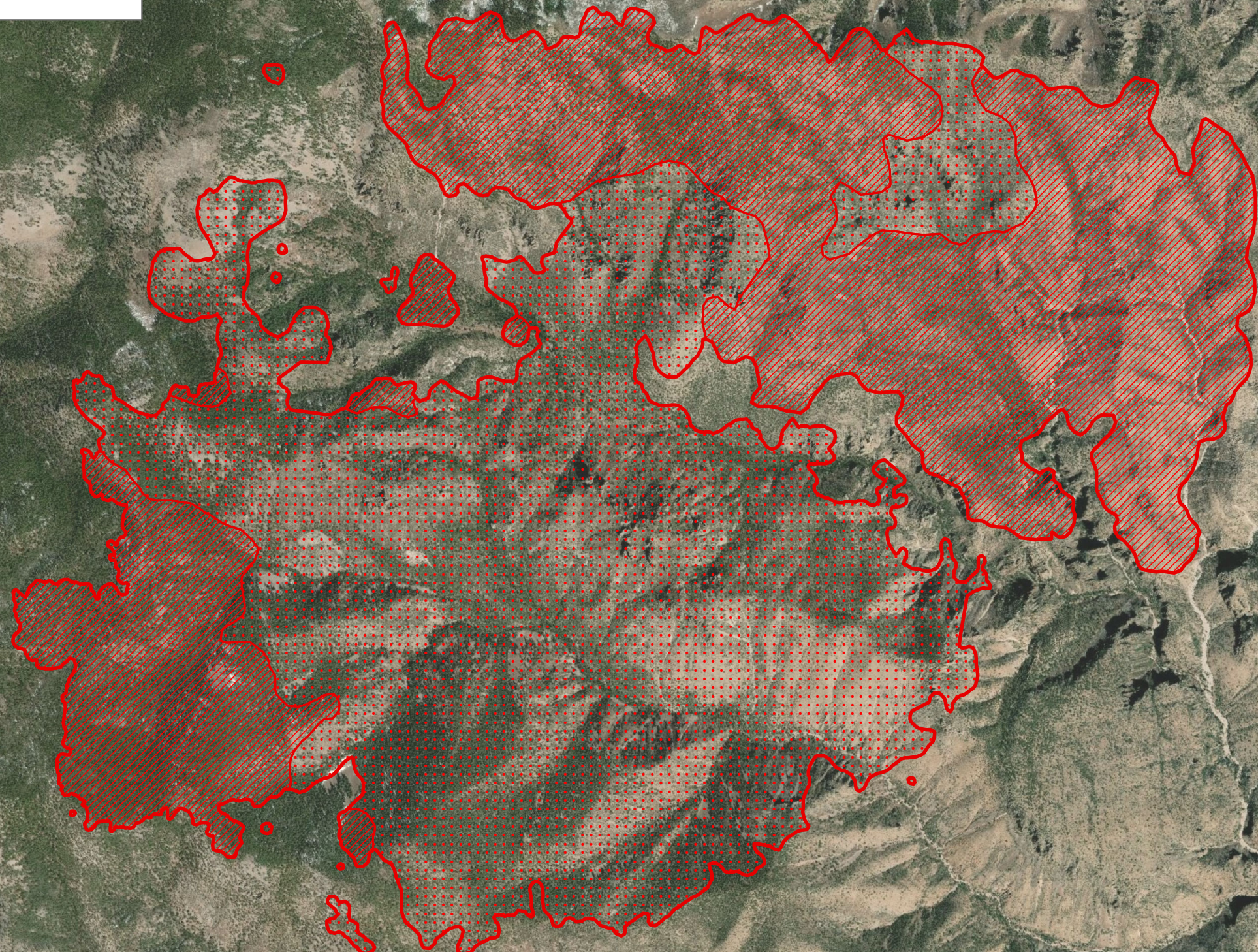
33°37'0"N




33°36'0"N

33°38'0"N

33°37'0"N

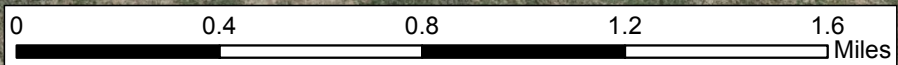
33°36'0"N



-  Heat Perimeter
-  Intense Heat
-  Scattered Heat



UTM Zone 13 NAD83
Map Produced: 07/22/2019 0400 MDT
IRIN: Elsa Hucks



Source: Esri, DigitalGlobe, GeoEye, Earthstar Geographics, CNES/Airbus DS, USDA, USGS, AeroGRID, IGN, and the GIS User Community

107°26'0"W 107°25'0"W 107°24'0"W 107°23'0"W 107°22'0"W 107°21'0"W