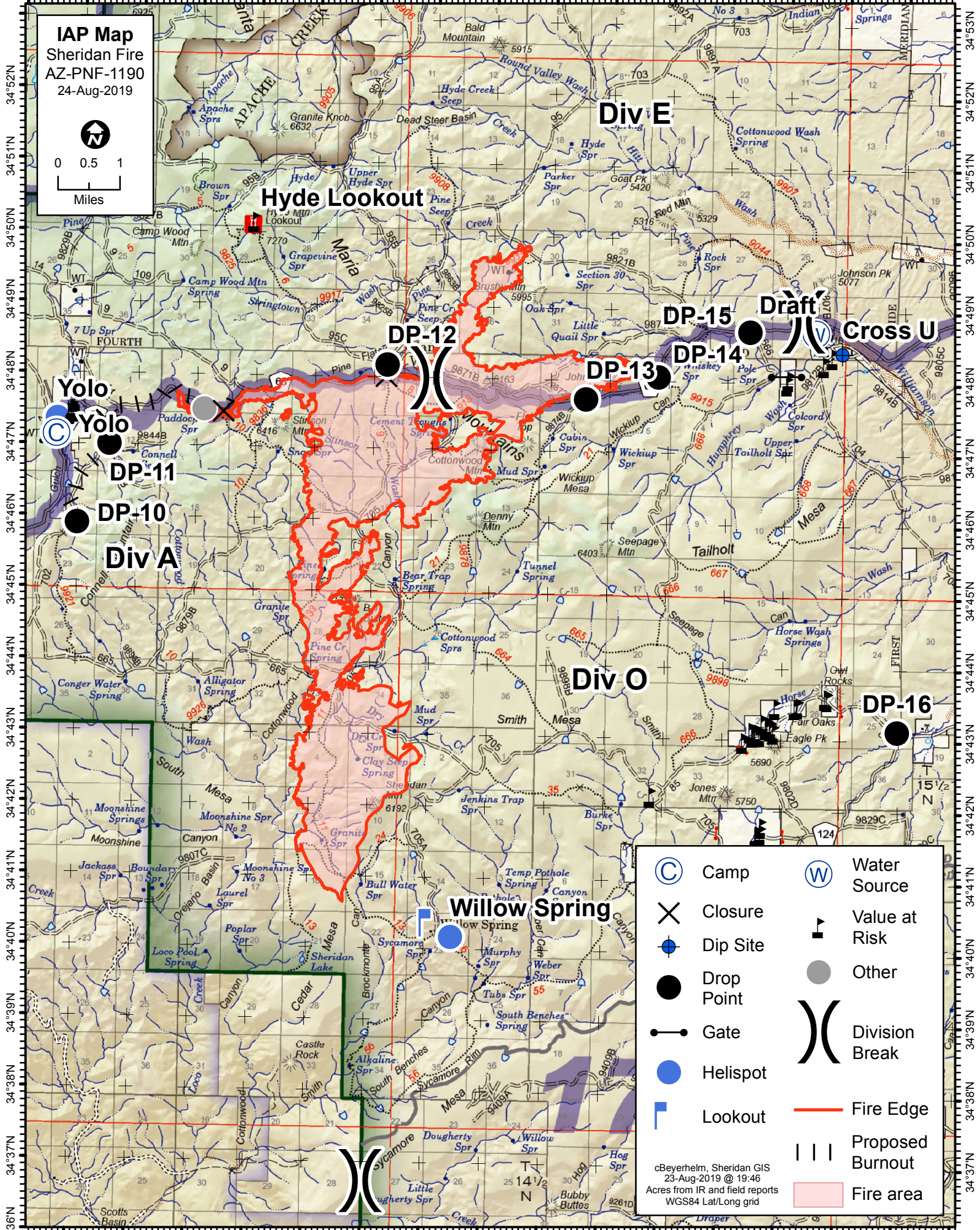


112°59'W 112°58'W 112°57'W 112°56'W 112°55'W 112°54'W 112°53'W 112°52'W 112°51'W 112°50'W 112°49'W 112°48'W 112°47'W 112°46'W 112°45'W 112°44'W



IAP Map
Sheridan Fire
AZ-PNF-1190
24-Aug-2019



0 0.5 1
Miles

	Camp		Water Source
	Closure		Value at Risk
	Dip Site		Other
	Drop Point		Division Break
	Gate		Fire Edge
	Helispot		Proposed Burnout
	Lookout		Fire area

cBeyerhelm, Sheridan GIS
23-Aug-2019 @ 19:46
Acres from IAT and field reports
WGS84 Lat/Long grid

112°58'W 112°57'W 112°56'W 112°55'W 112°54'W 112°53'W 112°52'W 112°51'W 112°50'W 112°49'W 112°48'W 112°47'W 112°46'W 112°45'W 112°44'W