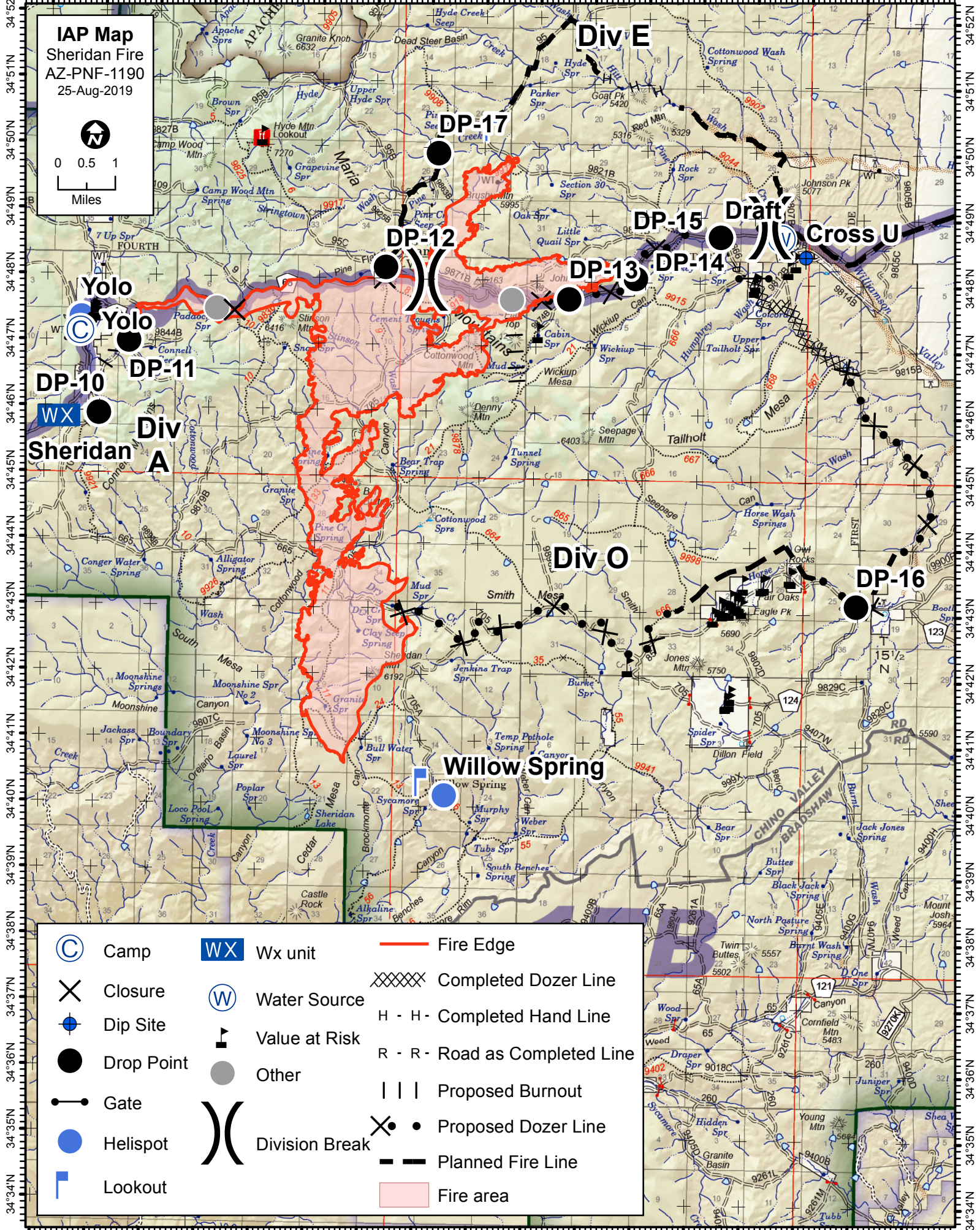


112°59'W 112°58'W 112°57'W 112°56'W 112°55'W 112°54'W 112°53'W 112°52'W 112°51'W 112°50'W 112°49'W 112°48'W 112°47'W 112°46'W 112°45'W 112°44'W 112°43'W



IAP Map
Sheridan Fire
AZ-PNF-1190
25-Aug-2019



0 0.5 1
Miles

- | | | | | | |
|--|------------|--|---------------------|--|------------------------|
| | Camp | | Wx unit | | Fire Edge |
| | Closure | | Water Source | | Completed Dozer Line |
| | Dip Site | | Value at Risk | | Completed Hand Line |
| | Drop Point | | Other | | Road as Completed Line |
| | Gate | | Division Break | | Proposed Burnout |
| | Helispot | | Proposed Dozer Line | | Planned Fire Line |
| | Lookout | | Fire area | | |

112°59'W 112°58'W 112°57'W 112°56'W 112°55'W 112°54'W 112°53'W 112°52'W 112°51'W 112°50'W 112°49'W 112°48'W 112°47'W 112°46'W 112°45'W 112°44'W 112°43'W