

112°58'W

112°56'W

112°53'W

112°52'W

112°50'W

34°52'N

34°50'N

34°48'N

34°46'N

34°44'N

34°41'N

34°40'N

34°38'N

34°52'N

34°50'N

34°48'N

34°46'N

34°44'N

34°41'N

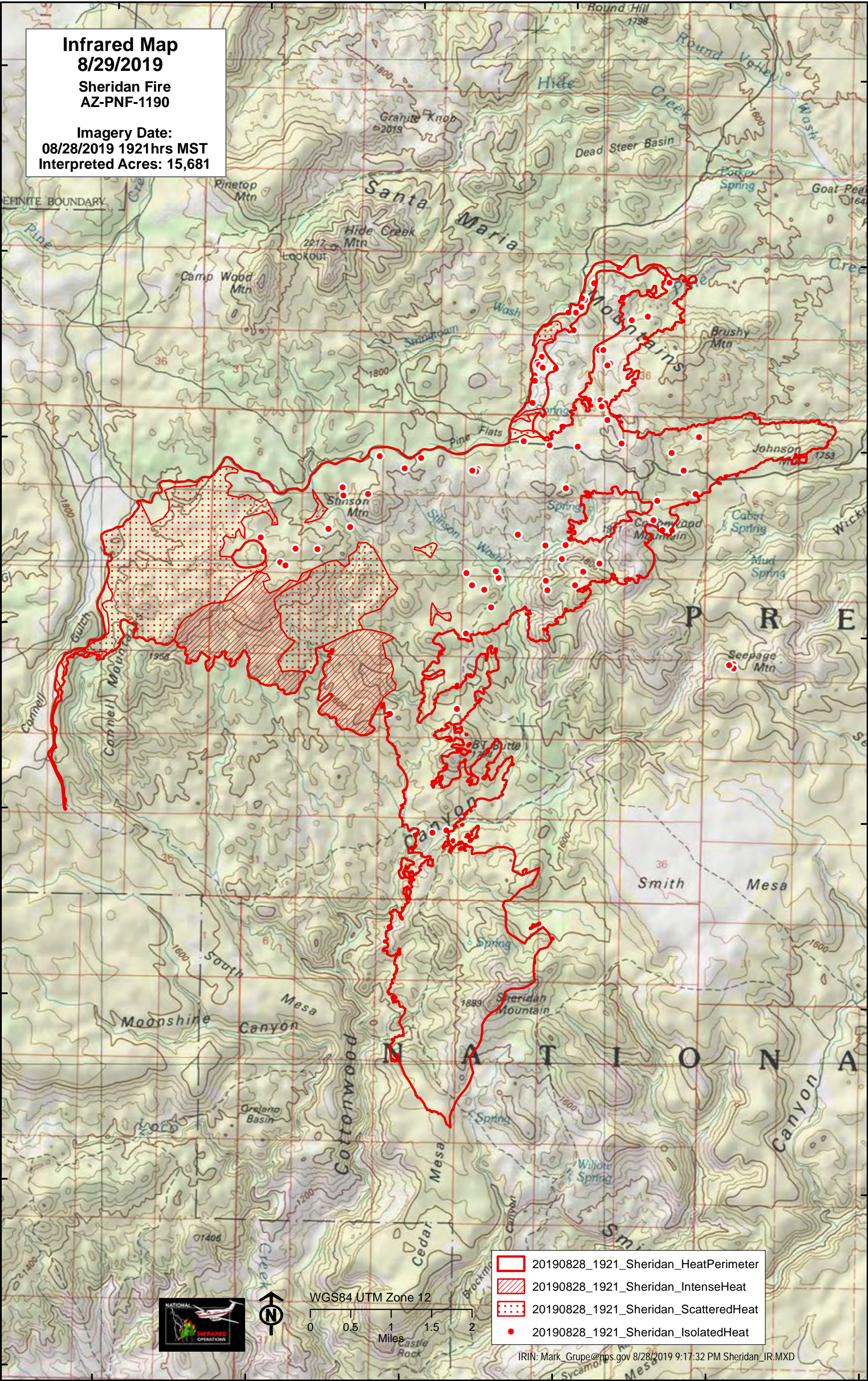
34°40'N

34°38'N

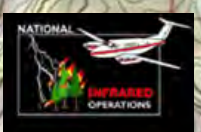
Infrared Map 8/29/2019

Sheridan Fire AZ-PNF-1190

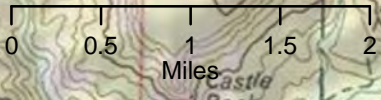
Imagery Date:
08/28/2019 1921hrs MST
Interpreted Acres: 15,681



- 20190828_1921_Sheridan_HeatPerimeter
- 20190828_1921_Sheridan_IntenseHeat
- 20190828_1921_Sheridan_ScatteredHeat
- 20190828_1921_Sheridan_IsolatedHeat



WGS84 UTM Zone 12



IRIN: Mark_Grupe@nps.gov 8/28/2019 9:17:32 PM Sheridan_IR.MXD

112°58'W

112°56'W

112°53'W

112°52'W

112°50'W

112°48'W