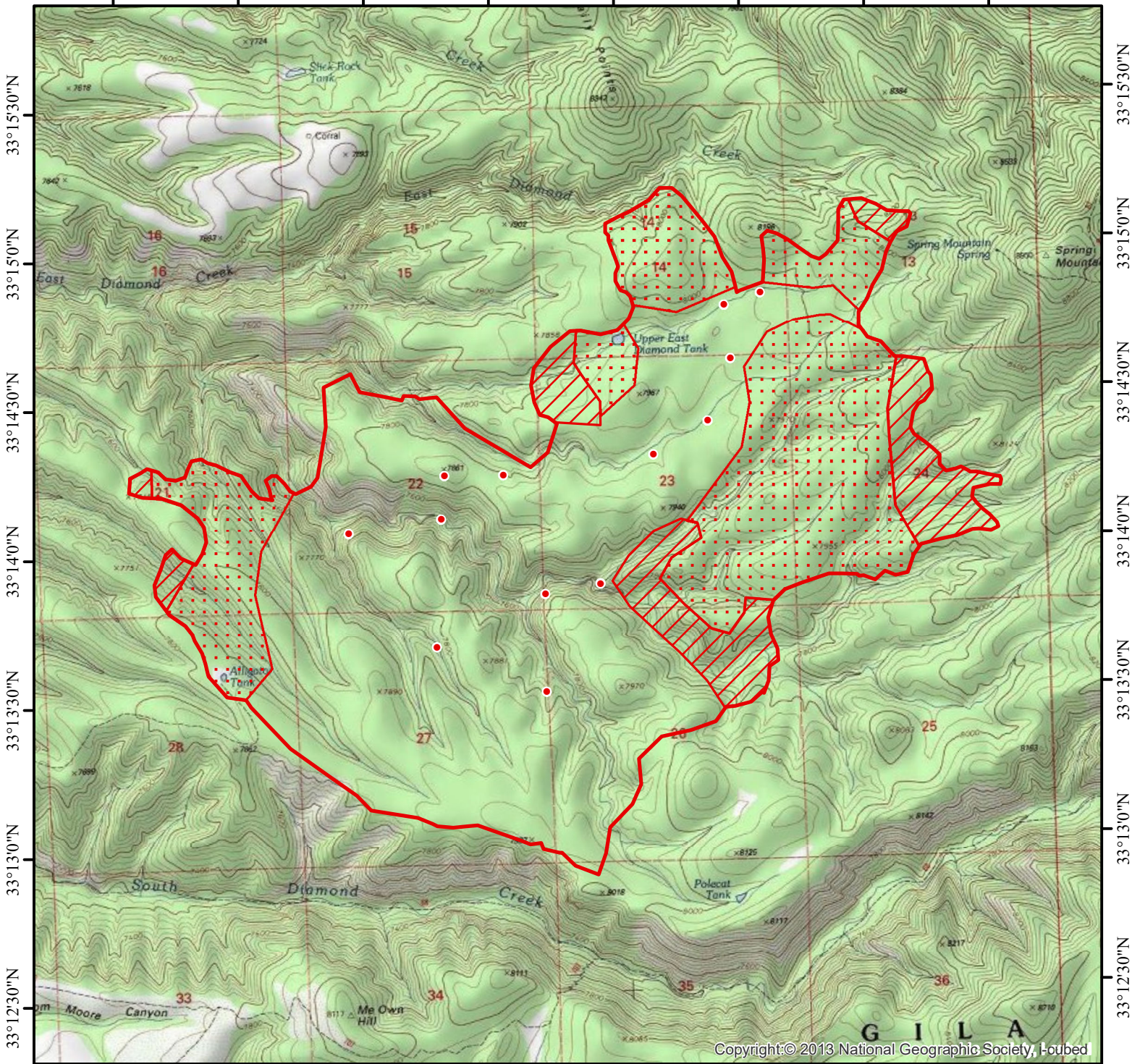


107°59'30"W 107°59'0"W 107°58'30"W 107°58'0"W 107°57'30"W 107°57'0"W 107°56'30"W 107°56'0"W

INFRARED MAP
South
NM-GNF-000264
Interpreted (IR) Acres: 2,778
July 14, 2019 @ 0010 MDT







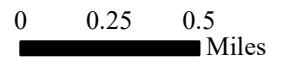
33°15'30"N
33°15'0"N
33°14'30"N
33°14'0"N
33°13'30"N
33°13'0"N
33°12'30"N

33°15'30"N
33°15'0"N
33°14'30"N
33°14'0"N
33°13'30"N
33°13'0"N
33°12'30"N

107°59'30"W 107°59'0"W 107°58'30"W 107°58'0"W 107°57'30"W 107°57'0"W 107°56'30"W 107°56'0"W

Copyright © 2013 National Geographic Society, Inc.

-  Isolated Heat
-  Heat Perimeter
-  Intense Heat
-  Scattered Heat



*IRIN: Cheron Ferland
Taos, NM
Nad 83 UTM Zone 13*