

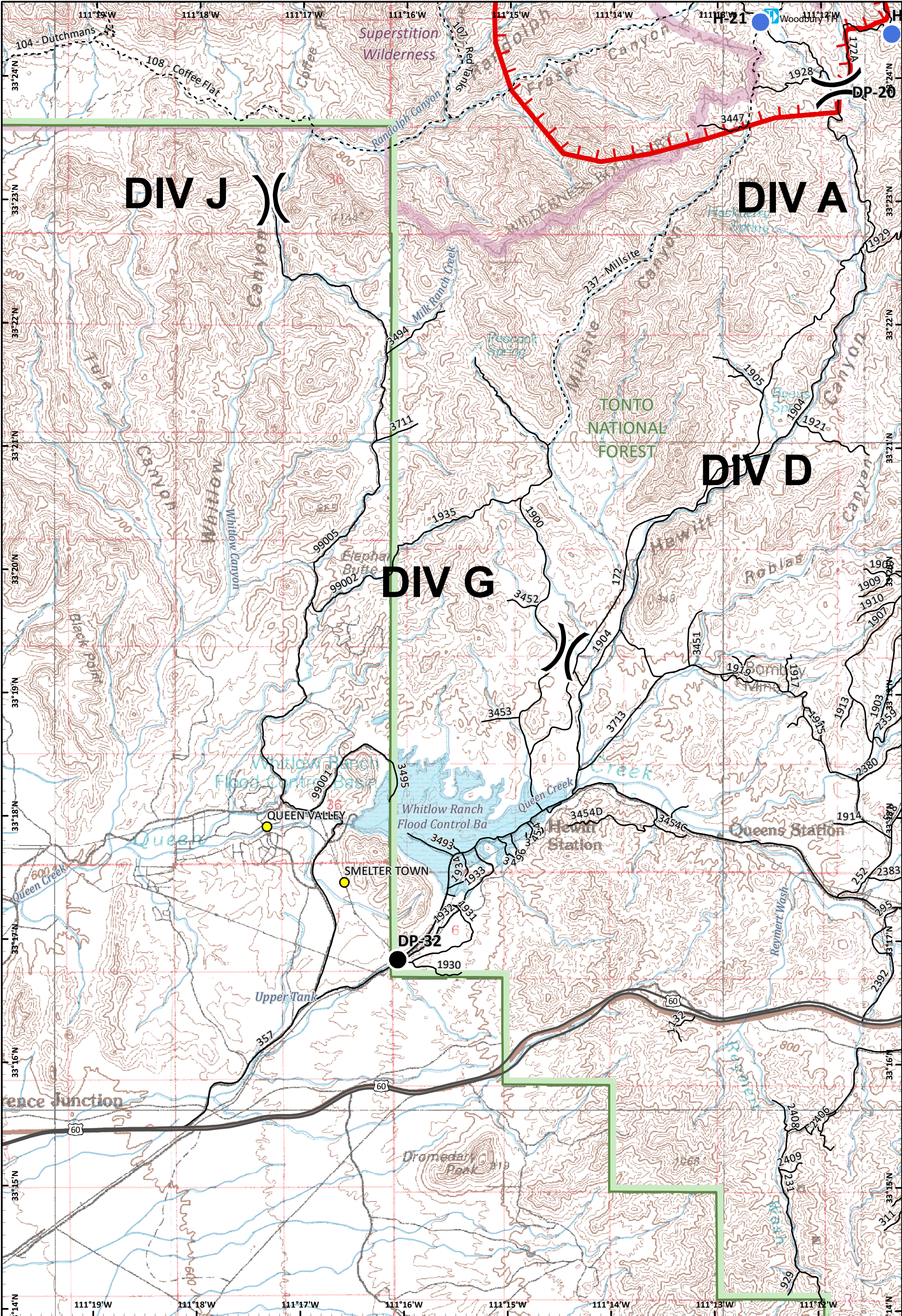
Incident Action Plan Map
DIV J
Woodbury Fire
 AZ-TNF-000579
 6/13/2019 Day

Cities	Drop Point	U.S. Highway	County
Towns	Helispot	State Highway	Forest Boundary
Trailhead	Arizona National Scenic Trail	Road	Wilderness
Division Break	Uncontrolled Fire Edge	Trail	Waterbody
			Stream

Approx 9377 acres as of 6/11/19 1900 hrs

Miles 0 0.25 0.5
 Kilometers 0 0.25 0.5

NAD 1983 UTM Zone 12N
 Prepared by: mchandler
 6/13/2019 0004 hrs




Incident Action Plan Map
DIV G
Woodbury Fire
 AZ-TNF-000579
 6/13/2019 Day


- Cities
- Towns
- Trailhead
-) Division Break
- Drop Point
- Helispot
- Arizona National Scenic Trail
- Uncontrolled Fire Edge
- U.S. Highway
- State Highway
- Road
- - - Trail
- County
- Forest Boundary
- Wilderness
- Waterbody
- Stream

Approx 9377 acres
 as of 6/11/19 1900 hrs

0 0.25 0.5
 Miles

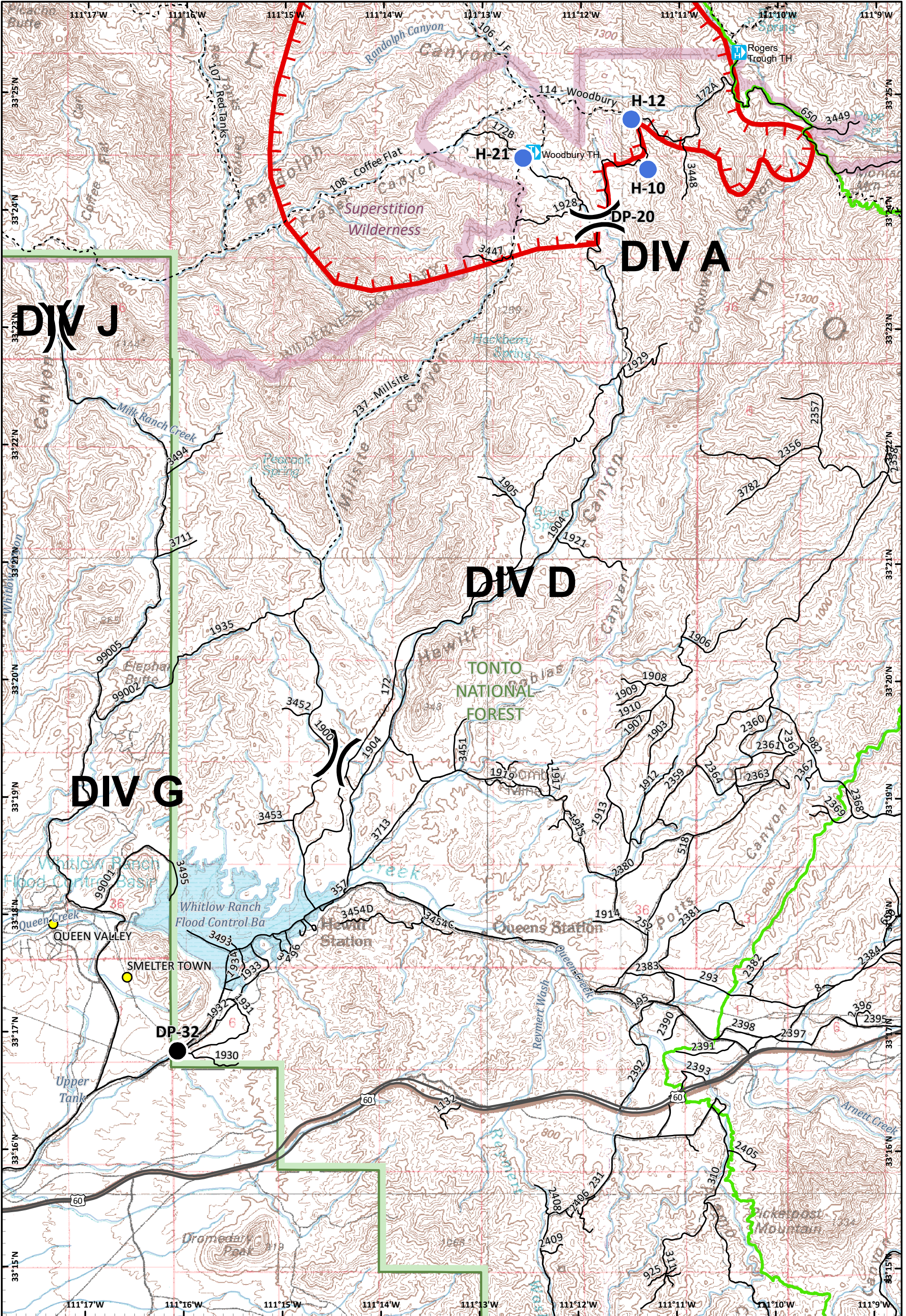
0 0.25 0.5
 Kilometers





SOUTHWEST AREA
INCIDENT MANAGEMENT TEAM

NAD 1983 UTM Zone 12N
 Prepared by mchandler
 6/13/2019 0004 hrs



Incident Action Plan Map
DIV D
Woodbury Fire
 AZ-TNF-000579
 6/13/2019 Day

- Cities
- Towns
- Trailhead
- Division Break
- Drop Point
- Helispot
- Arizona National Scenic Trail
- Uncontrolled Fire Edge
- U.S. Highway
- State Highway
- Road
- - - Trail

- County
- Forest Boundary
- Wilderness
- Waterbody
- Stream

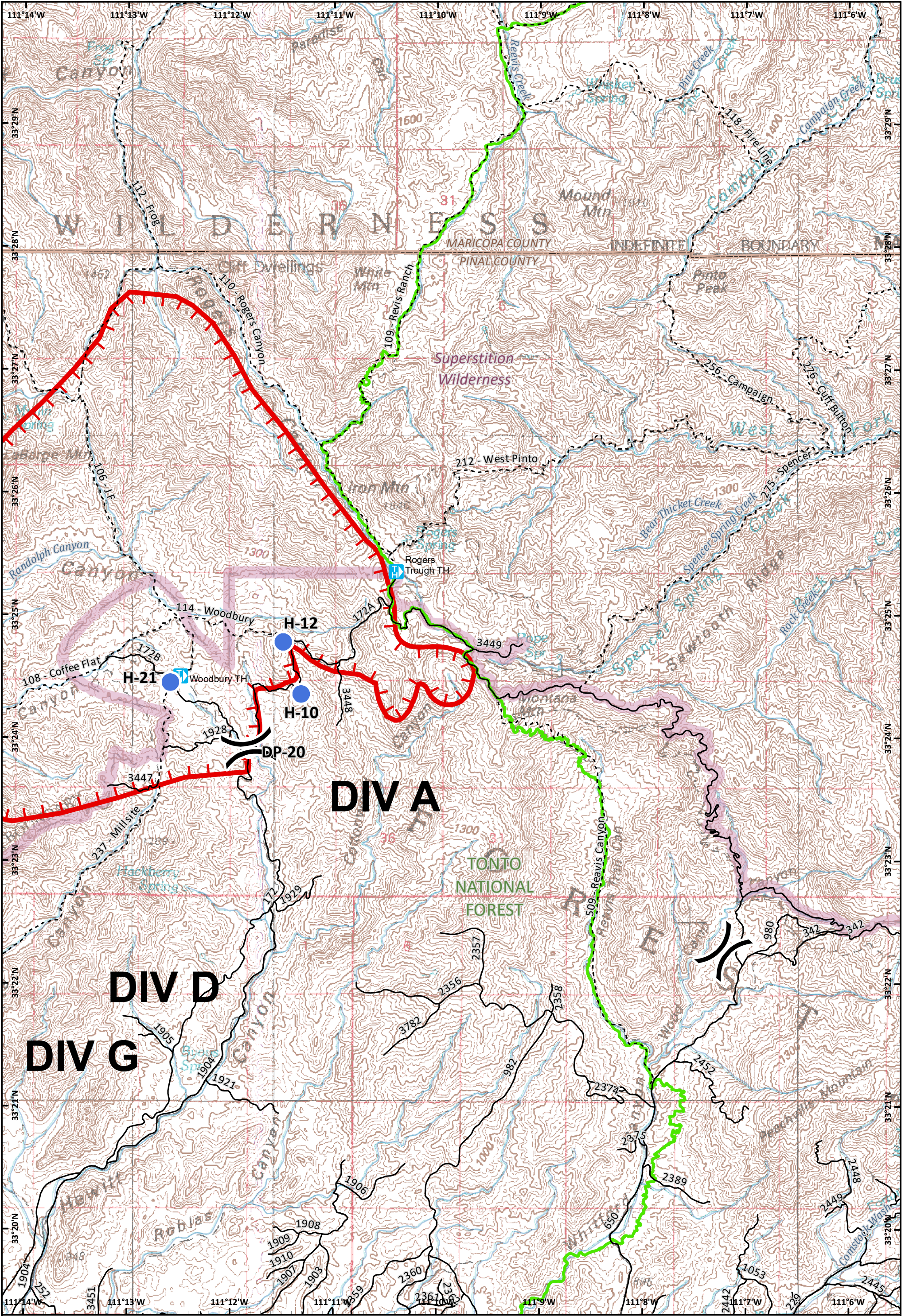
Approx 9377 acres
as of 6/11/19 1900 hrs

Miles 0 0.25

Kilometers 0 0.25

SOUTHWEST AREA
INCIDENT MANAGEMENT TEAM

NAD 83 UTM Zone 12N
Projected by mchandler
06/13/2019 0004 hrs



Incident Action Plan Map
DIV A
Woodbury Fire
 AZ-TNF-000579
 6/13/2019 Day

Cities	Drop Point	U.S. Highway	County	Approx 9377 acres as of 6/11/19 1900 hrs		
Towns	Helispot	State Highway	Forest Boundary			
Trailhead	Uncontrolled Fire Edge	Road	Wilderness	Miles 0 0.25 0.5		
Division Break	Arizona National Scenic Trail	Trail	Waterbody			